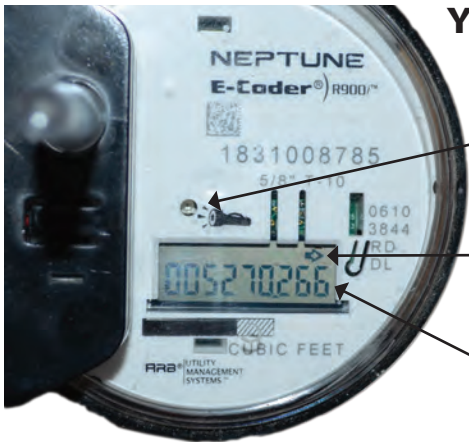


# How to Read Your Meter



**You will need a flashlight to read this meter.**

**Light Sensor**

Shine a flashlight to turn on display panel.

**Flow Indicator**

*Visible only when water is running.*

**Display Panel**

Read the numbers from left to right to provide a water meter reading.

Every six seconds, the display panel will alternate between the rate of flow (top) and total water use.

**Rate Indicator** "RATE" means it is displaying the rate of water flow measured in cubic feet per minute.



This shows 0.393 **cubic feet** of water **per minute** flowing through the meter. To determine gallons per minute, multiply by 7.48.

$0.393 \text{ cu.ft. min.} \times 7.48 = 2.94 \text{ gal. per min.}$   
In 10 minutes, 29.4 gallons of water will pass through this meter. **Hour: 176.4** gallons;  
**Day: 4,233** gallons; **Month: 131,225** gallons.

### Leak Indicator

An image of a **faucet** indicates a leak. **No faucet** indicates no leak.



**To call in  
a reading:  
651-266-6350**



1900 Rice Street  
Saint Paul, MN 55113

**Emergency 24/7  
651-266-6874**