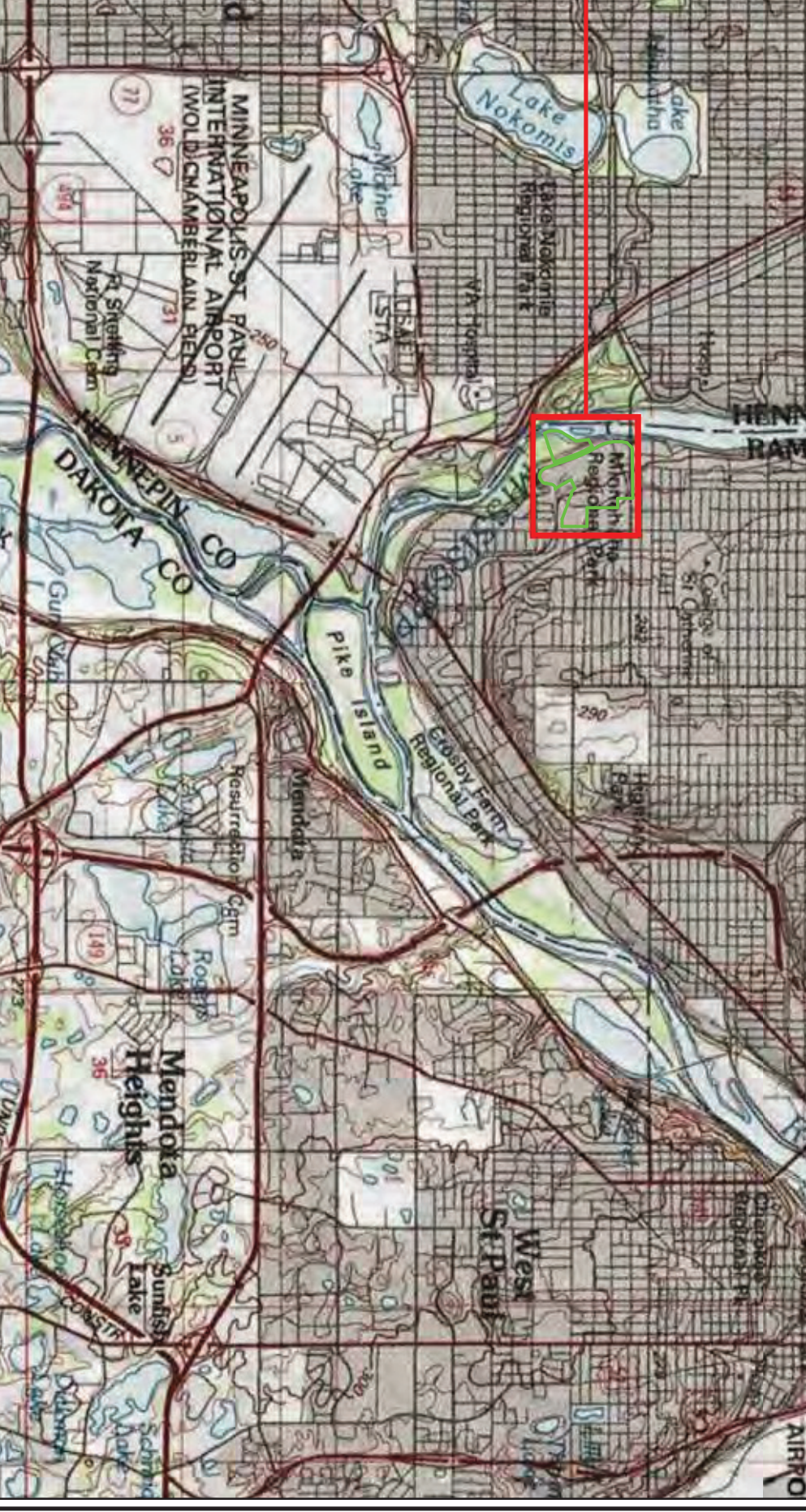


FIGURES





LEGEND:
 Ford Property Boundary

NOTES:
 Imagery Source: MtnGeo WMS service, 2010 color 7-county
<http://geointl.mtc.state.mn.us/cgi-bin/wms?> Accessed 12/18/2015
 Topographic Map Source:
 © 2007 National Geographic Society


 1 inch = 1 miles



Twin Cities Assembly Plant
 Ford Motor Company
 St. Paul, Minnesota

Site Location



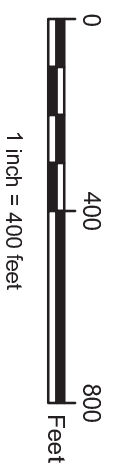


LEGEND:

- Former Buildings
- Ford Property Boundary

NOTES:

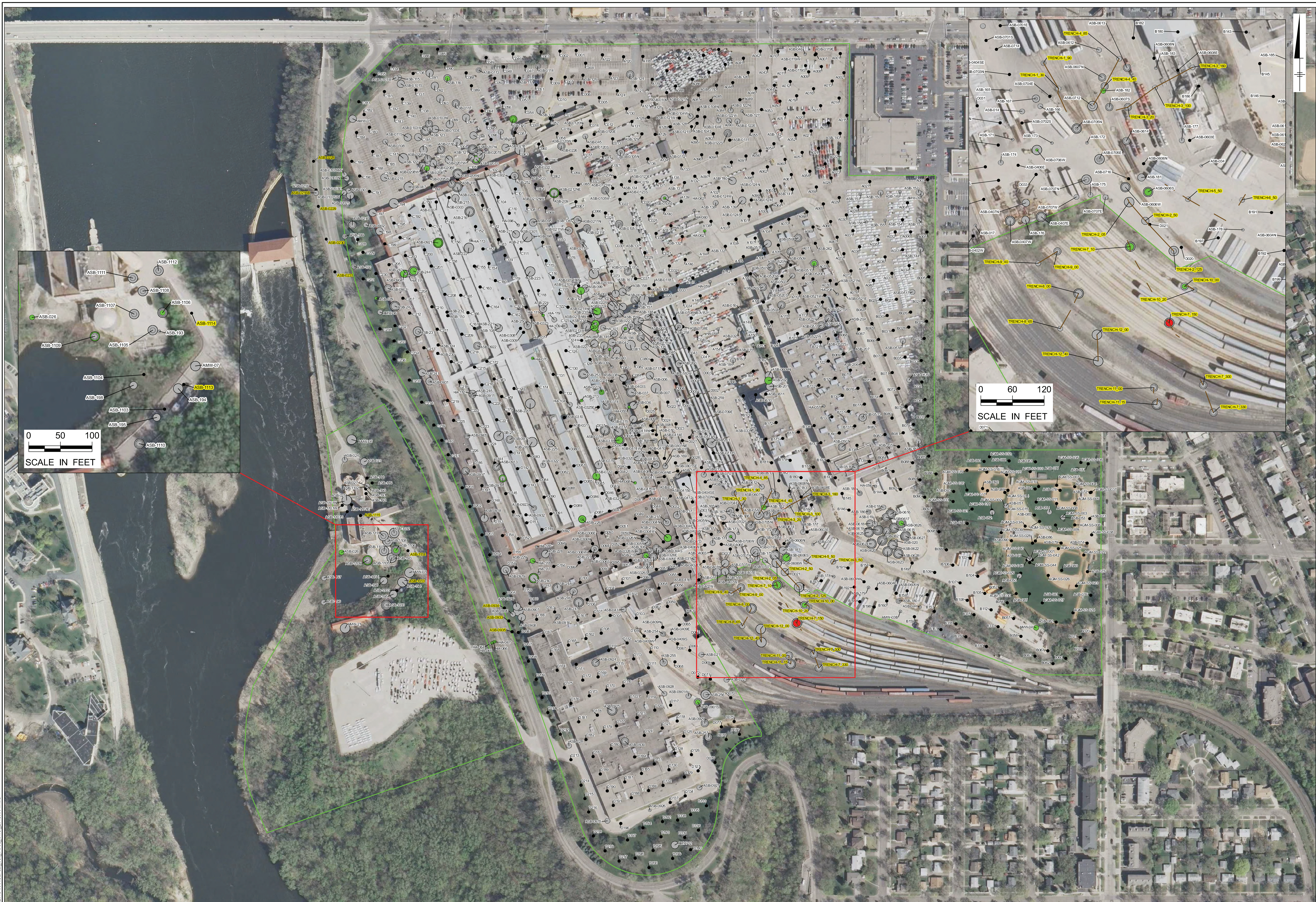
Imagery Source: MtnGeo WMS service, 2010 color 7-county
<http://geoint.limic.state.mn.us/cgi-bin/wms?> Accessed 12/18/2015



Twin Cities Assembly Plant
 Ford Motor Company
 St. Paul, Minnesota

Property Layout





LEGEND:

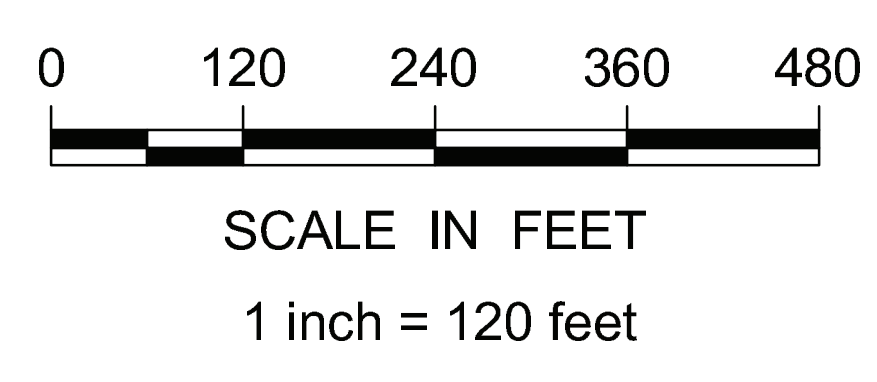
	Ford Property Boundary		Chlorinated VOCs exceed Tier II Industrial SRV standards
	Trench Location		Chlorinated VOCs exceed Tier I Residential SRV standards
	Start Depth 0-1'		Chlorinated VOCs below Tier I Residential SRV standards
	Start Depth 1-4'		Chlorinated VOCs not detected
	Start Depth 4-8'		No samples collected for Chlorinated VOCs
	Start Depth > 8'		

NOTES:

Chlorinated VOCs
 1,1-Dichloroethane
 1,1-Dichloroethene
 1,1,1-Trichloroethane
 1,1,1,2-Tetrachloroethane
 1,1,2-Trichloroethane
 1,1,2,2-Tetrachloroethane
 Chloroethane
 cis-1,2-Dichloroethene
 Tetrachloroethene
 trans-1,2-Dichloroethene
 Trichloroethene
 Vinyl chloride

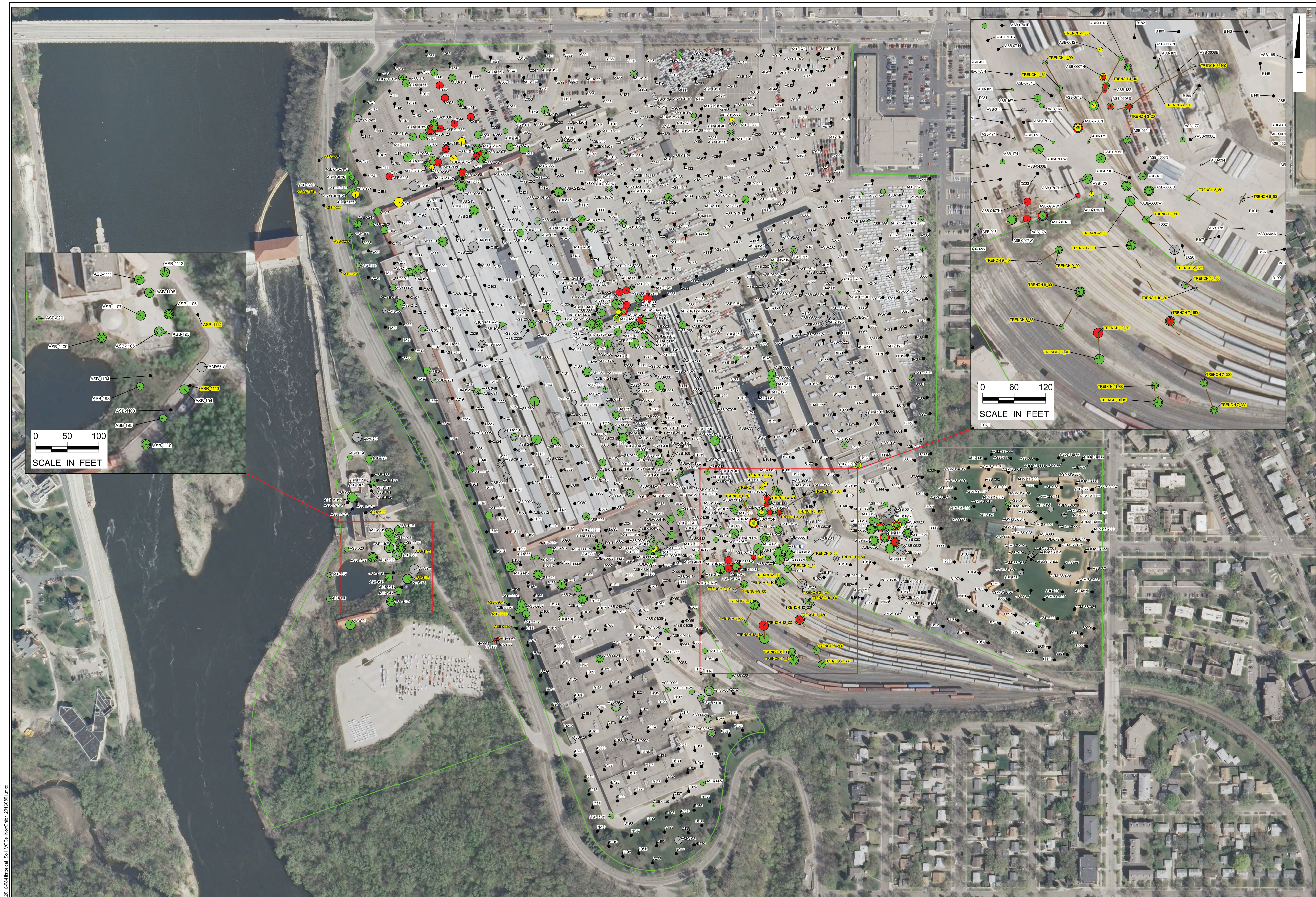
Highlighted sample IDs denote investigation locations completed as part of the SIR-Soil Addendum.

AMW = Arcadis Monitoring Well
 ASB = Arcadis Soil Boring
 HA = Hand Auger
 SRV = Soil Reference Value
 VOC = Volatile Organic Compound
 Imagery Source: MnGeo WMS service, 2010 color 7-county
<http://geoint.lmic.state.mn.us/cgi-bin/wms?>



Chlorinated VOC Soil Results





CITY, MINNEAPOLIS, MN. DB, MG, LD, KH
 PATH: Z:\GIS\PROJECTS\ENV\Ford\Burger\MapInfo\2016\2016-08\Historical_So_VOCs_NonChlor_20160801.mxd


LEGEND:

- Ford Property Boundary
- Trench Location
- Start Depth 0-1'
- Start Depth 1-4'
- Start Depth 4-8'
- Start Depth > 8'
- Non-Chlorinated VOCs exceed Tier II Industrial SRV standards
- Non-Chlorinated VOCs exceed Tier I Residential SRV standards
- Non-Chlorinated VOCs below Tier I Residential SRV standards
- Non-Chlorinated VOCs not detected
- No samples collected for Non-Chlorinated VOCs

NOTES:

Highlighted sample IDs denote investigation locations completed as part of the SIR-Soil Addendum.
 AMW = Arcadis Monitoring Well
 ASB = Arcadis Soil Boring
 HA = Hand Auger
 SRV = Soil Reference Value
 VOC = Volatile Organic Compound
 Imagery Source: MnGeo WMS service, 2010 color 7-county
<http://geoint.lmic.state.mn.us/cgi-bin/wms?>





Twin Cities Assembly Plant
 Ford Motor Company
 St. Paul, Minnesota

**Non-Chlorinated VOC
 Soil Results**




FIGURE
4