

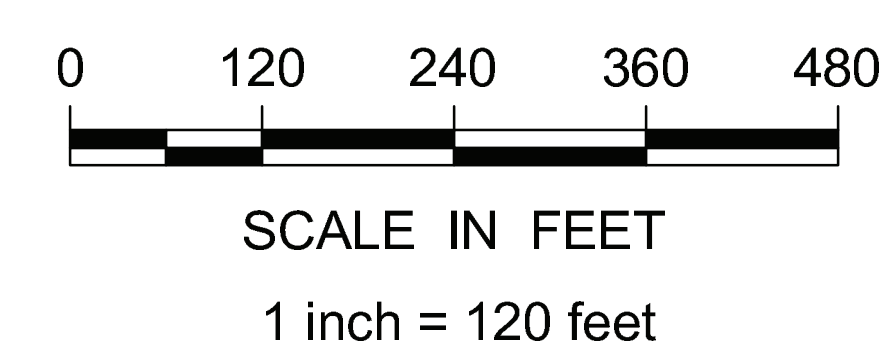
LEGEND:

- Ford Property Boundary
- Trench Location
- Start Depth 0-1'
- Start Depth 1-4'
- Start Depth 4-8'
- Start Depth > 8'
- SVOCs/PAHs exceed Tier II Industrial SRV standards
- SVOCs/PAHs exceed Tier I Residential SRV standards
- SVOCs/PAHs below Tier I Residential SRV standards
- SVOCs/PAHs not detected
- No samples collected for SVOCs/PAHs

NOTES:

Highlighted sample IDs denote investigation locations completed as part of the SIR-Soil Addendum.

AMW = Arcadis Monitoring Well
 ASB = Arcadis Soil Boring
 HA = Hand Auger
 PAH = Polynuclear Aromatic Hydrocarbons
 SRV = Soil Reference Value
 SVOC = Semivolatile Organic Compound
 Imagery Source: MGeo WMS service, 2010 color 7-county
<http://geoint.lmic.state.mn.us/cgi-bin/wms/>

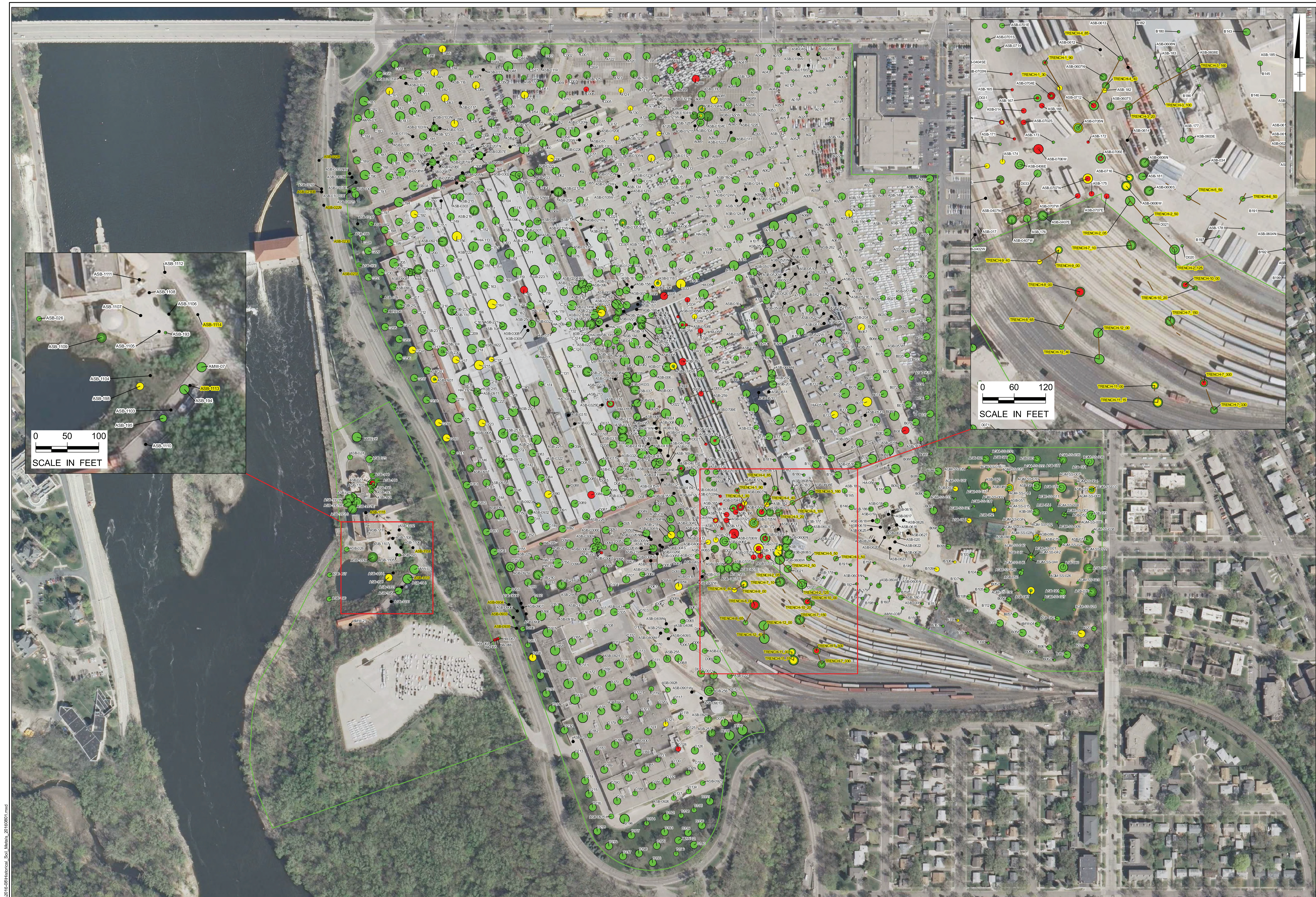


Twin Cities Assembly Plant
 Ford Motor Company
 St. Paul, Minnesota

**SVOC/PAH
 Soil Results**



FIGURE
5



CITY, MINNEAPOLIS, MN. DB, MG, LD, KH
 PATH: Z:\GIS\PROJECTS\ENV\Ford\Burger\Working\01161016\Historical_Soil_Maps_201001.mxd

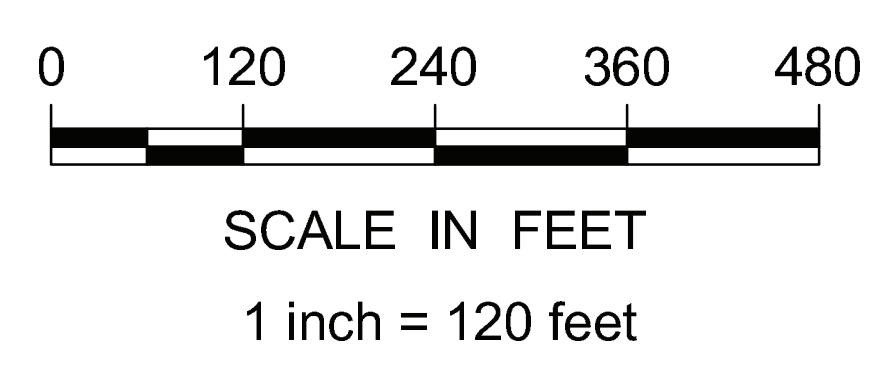
LEGEND:


- Ford Property Boundary
- Trench Location
- Start Depth 0-1'
- ◐ Start Depth 1-4'
- ◑ Start Depth 4-8'
- ◒ Start Depth > 8'
- Metals exceed Tier II Industrial SRV standards
- Metals exceed Tier I Residential SRV standards
- Metals below Tier I Residential SRV standards
- Metals not detected
- No samples collected for Metals

NOTES: Highlighted sample IDs denote investigation locations completed as part of the SIR-Soil Addendum.

Sample locations with iron concentrations greater than the residential SRV for iron are not included on this figure.

AMW = Arcadis Monitoring Well
 ASB = Arcadis Soil Boring
 HA = Hand Auger
 SRV = Soil Reference Value
 Imagery Source: MnGeo WMS service, 2010 color 7-county
<http://geoint.lmic.state.mn.us/cgi-bin/wms?>





Twin Cities Assembly Plant
 Ford Motor Company
 St. Paul, Minnesota

**Metals
 Soil Results**


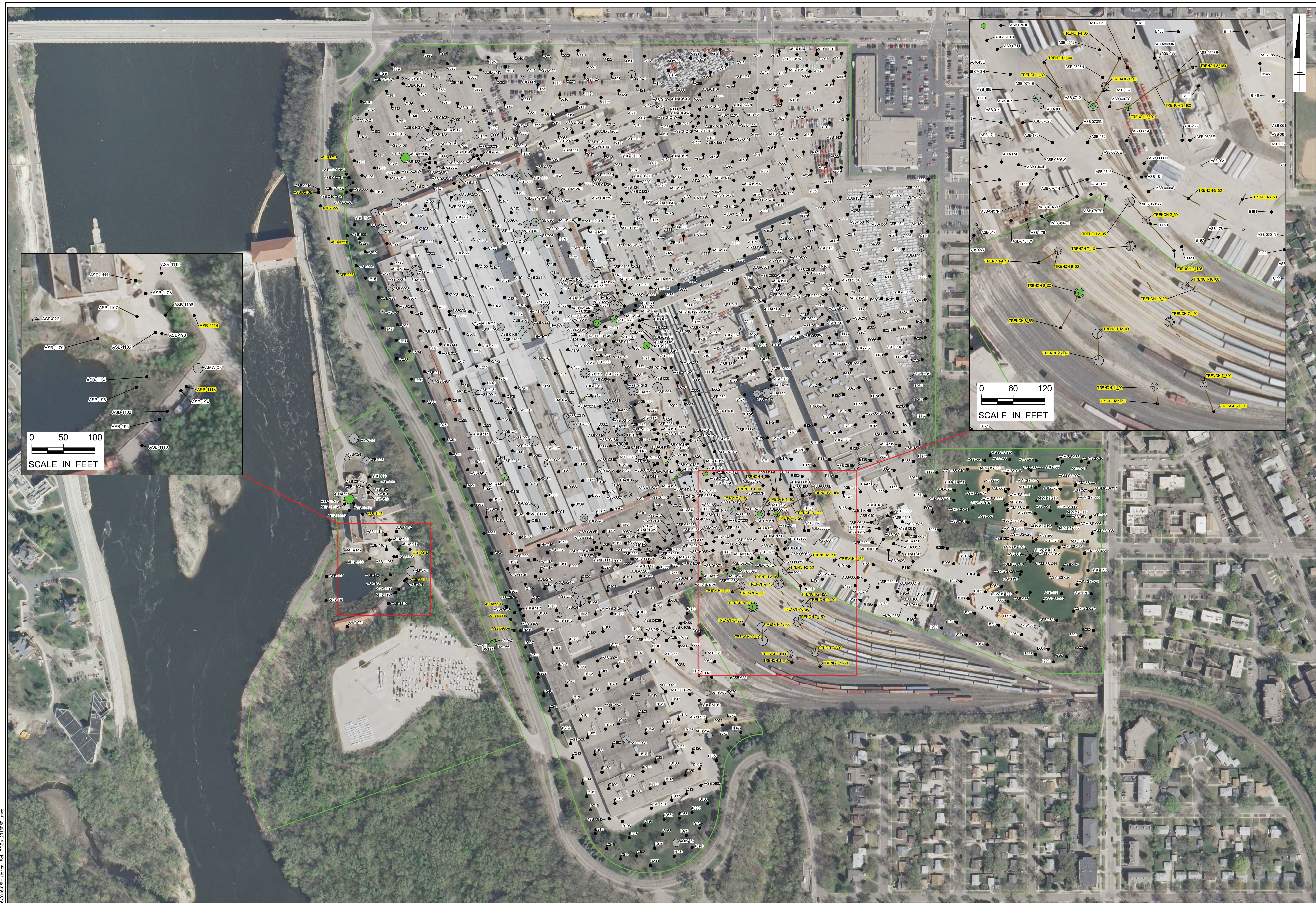


FIGURE
6



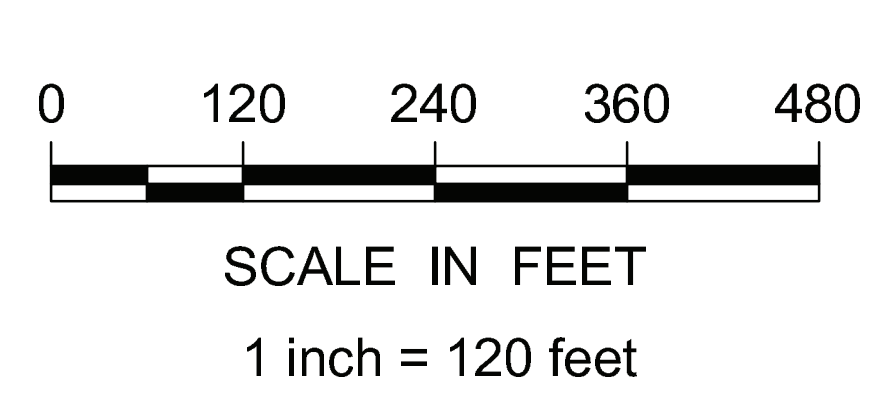
CITY, MINNEAPOLIS, MN. DB, MG, LD, KH
 PATH: Z:\GIS\PROJECTS\ENV\Ford\Burger\Working\01012016\01012016\Historical_Soil_PCBs_20160617.mxd


- LEGEND:**
- Ford Property Boundary
 - Trench Location
 - Start Depth 0-1'
 - Start Depth 1-4'
 - Start Depth 4-8'
 - Start Depth > 8'
 - PCBs exceed Tier II Industrial SRV standards
 - PCBs exceed Tier I Residential SRV standards
 - PCBs below Tier I Residential SRV standards
 - PCBs not detected
 - No samples collected for PCBs

NOTES:

Highlighted sample IDs denote investigation locations completed as part of the SIR-Soil Addendum.

AMW = Arcadis Monitoring Well
 ASB = Arcadis Soil Boring
 HA = Hand Auger
 PCB = Polychlorinated Biphenyls
 SRV = Soil Reference Value
 Imagery Source: MGeo WMS service, 2010 color 7-county
<http://geoint.lmic.state.mn.us/cgi-bin/wms?>





Twin Cities Assembly Plant
 Ford Motor Company
 St. Paul, Minnesota

**PCB
 Soil Results**




FIGURE
7

