

MEETING #2

October 23, 2012
Victoria Park Design
Advisory Committee

Saint Paul Parks and Recreation Design Section

AGENDA

- Welcome & meeting recap
- Summary of framework plans
- Development of goals and objectives
- Preliminary program / brainstorming event
- Public comment
- Conclusion/ next steps

MEETING 1 RE -CAP: Structure

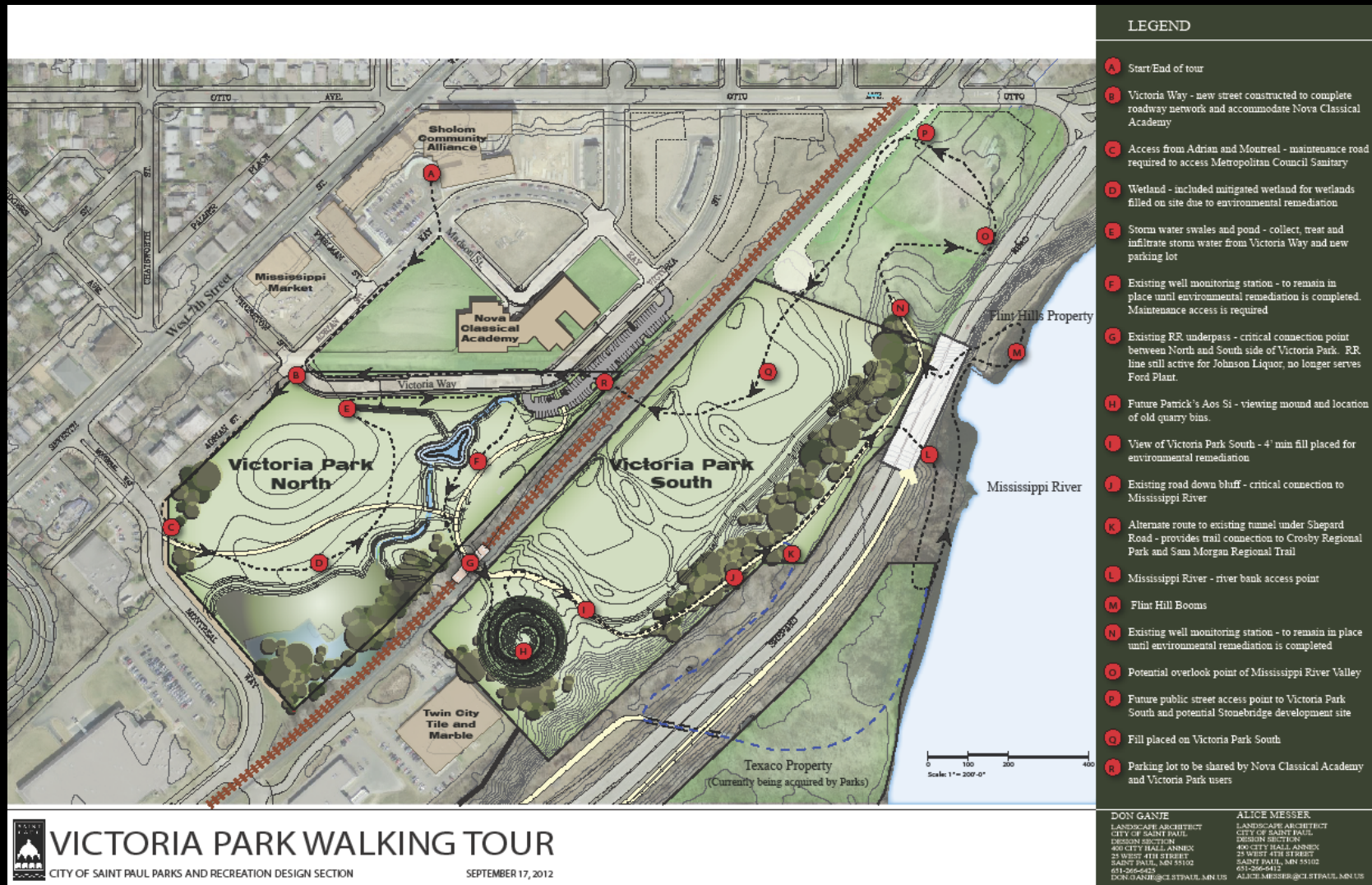
- No Alternates
- Decisions by consensus, not voting
- Work respectfully in group setting
- Understand and balance needs of all park users
- Join Committee with open-mind and willingness to listen and hear views/ideas for Victoria Park
- Have “parking lot” for additional comments/questions that come up that are not on agenda
- Limit talking points to 3 minutes, co-chairs will monitor
- Meetings open to public, but hear public comment at conclusion of meeting – 3 minute time limit.

MEETING 1 RE -CAP: Role

Victoria Park Design Advisory Committee is:

- Advisory role to Parks and Recreation
- Input balanced with larger citywide needs; City of Saint Paul Parks and Recreation Systems Plan, City of Saint Paul Vision Plan, Great River Passage and permitting requirements
- Committee members are representing larger interest group. City website will become central source of project information. This will allow Committee members to reach out to network and share information on project

MEETING 1 RE -CAP: Walking Tour



MEETING 1 RE -CAP: Schedule

Monthly meetings - 4th Tuesday of the Month



Meeting 1 (September 17, 2012): focused on familiarity with site and understanding of committee process



Meeting 2 (October 23, 2012): goals and objectives for park, brainstorming event, establish preliminary program for park

Meeting 3 (December): site analysis focusing on existing site constraints/opportunities, connections to surrounding environment (residential, river valley, bluff), history of site

Meeting 4 (January): conceptual ideas for Victoria park based on goals, objectives and site analysis

Public Open House (February) – held in conjunction with District Council Meeting

Meeting 5 (March): refined concept (s) based on feedback from Design Advisory Committee and Open House

Meeting 6 (April): present final concept plan and discuss implementation priorities which will be used as guide for funding requests.

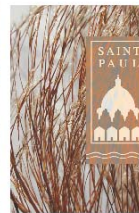
Framework Plans

Framework :

Master Plan: “A general plan or program for achieving an objective.”



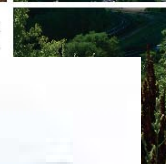
CITY



Master Plan



FORMATION



The mos

Design Advisory Committee

Regulations

Great River Passage

Vision Plan & System Plan

Small Area Plans

City of Saint Paul Comprehensive Plan

City of Saint Paul Mission

Framework :

Permits/ Regulations/Ordinance that impact master plan

- *Capitol Region Watershed District*
- *Critical Area Ordinance*
- *FEMA Floodway*
- *MPCA environmental cleanup requirements*
- *Wetland Conservation Act*
- *Canadian Pacific rail road easement*
- *City of Saint Paul Public Art Ordinance*
- *ExxonMobile Purchase Agreement stipulations*
- *Others?*

Framework :

System-wide needs

- Destination play areas
- Splash pads
- Off leash dog use areas
- Sand volleyball courts
- Basketball courts
- High quality athletic fields
- Walking and biking trails
- Access to nature
- Destination ice skating
- Family, adult and senior recreation



Goals and Objectives

What do we want the project to accomplish?

MISSION STATEMENT :

To develop an overall master plan for Victoria Park that enhances the unique natural environment of the river bluff, incorporates pedestrian friendly connections, and provides for community wide recreational needs.

DRAFT

GOALS AND OBJECTIVES :

CONNECT: *Provide attractive, safe and convenient pedestrian and bicycle connections to the Mississippi River, Sam Morgan Regional Trail system, mixed use urban village and surrounding transit corridor along West 7th Street.*

ENHANCE: *Provide enhancement of unique river bluff environment and Mississippi River through innovative storm water treatment, wildlife protection and soil remediation.*

ACTIVATE: *Provide a variety of recreational activities appropriate for a 40 acre park that encourage healthy and active lifestyles.*

GOALS AND OBJECTIVES :

CONNECT: *Provide attractive, safe and convenient pedestrian and bicycle connections to the Mississippi River, Sam Morgan Regional Trail system, mixed use urban village and surrounding transit corridor along West 7th Street.*

- 1) Provide access for non-motorized use of Mississippi River*
- 2) Restore and stabilize existing pathways down bluff to Mississippi River*
- 3) Provide regional connection to Sam Morgan Regional Trail and Crosby Regional Park*
- 4) ?*

Connect : Visually



Connect : Cultural



Connect : Mississippi River



Connect : People



Connect : People



Connect : Neighborhood



Connect : Transit



GOALS AND OBJECTIVES :

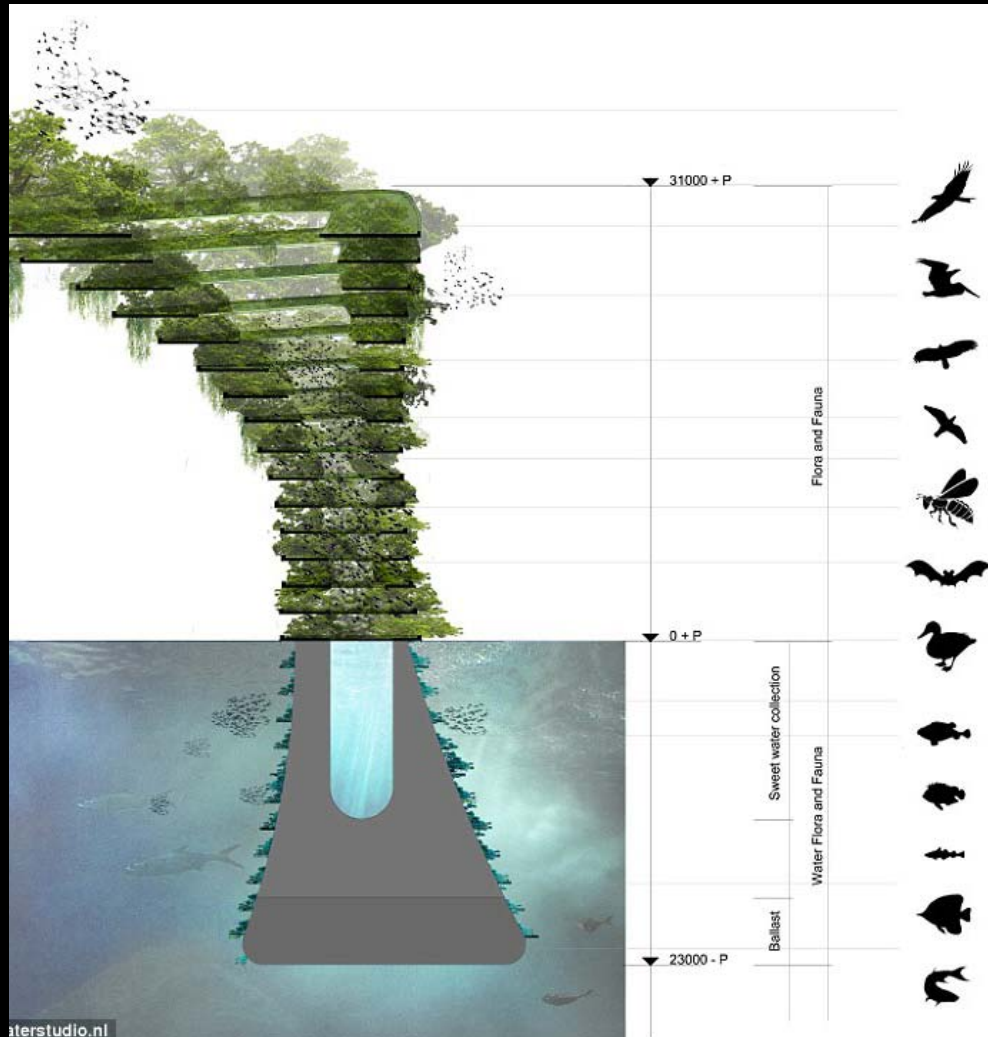
ENHANCE: *Provide enhancement of unique river bluff environment and Mississippi River through innovative storm water treatment, wildlife protection and soil remediation.*

- 1) Revitalize fertility of soil brought onsite for environmental remediation*
- 2) Enhance existing wetland through invasive species removal*
- 3) Protect existing river bluff through storm water management*
- 4) Stabilize areas of erosion*
- 5) Protect public from contamination through proper environmental remediation*
- 6) ?*

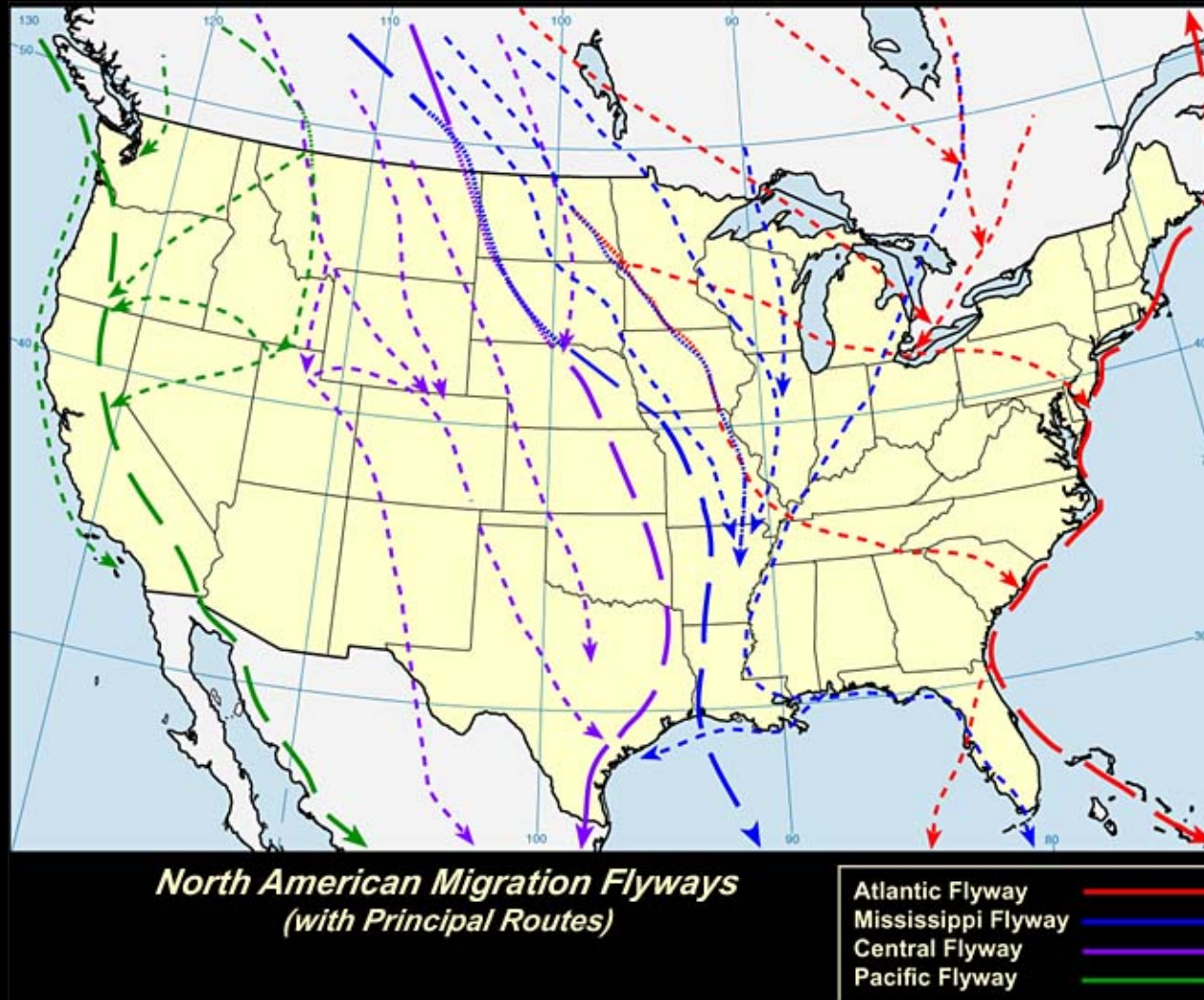
Enhance : Water Quality



Enhance : Wildlife Habitat



Enhance : Wildlife Corridors



Enhance : Soil Protection



Enhance : Soil Fertility



GOALS AND OBJECTIVES :

ACTIVATE: *Provide a variety of recreational activities appropriate for a 40 acre park that encourage healthy and active lifestyles.*

- 1) Provide bicycle and pedestrian trails throughout the park with connections to larger regional systems*
- 2) Provide recreational activities for all ages and abilities*
- 3) Accommodate nature-based recreation activities*
- 4) ?*

Activate : Water Play



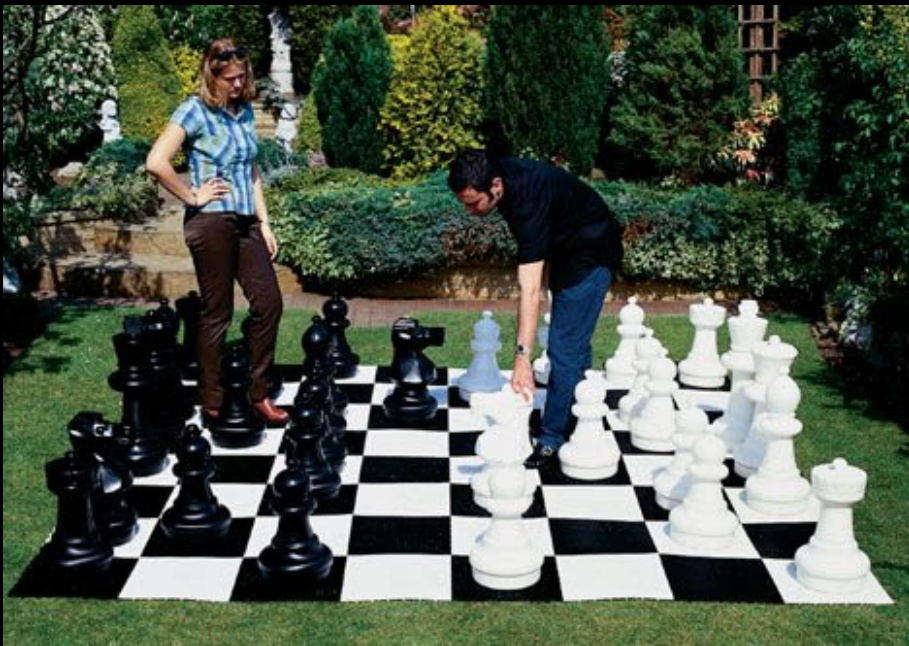
Activate : Water Play



Activate : Recreation



Activate : Recreation



Activate : Recreation



Activate : Recreation



Activate : Recreation

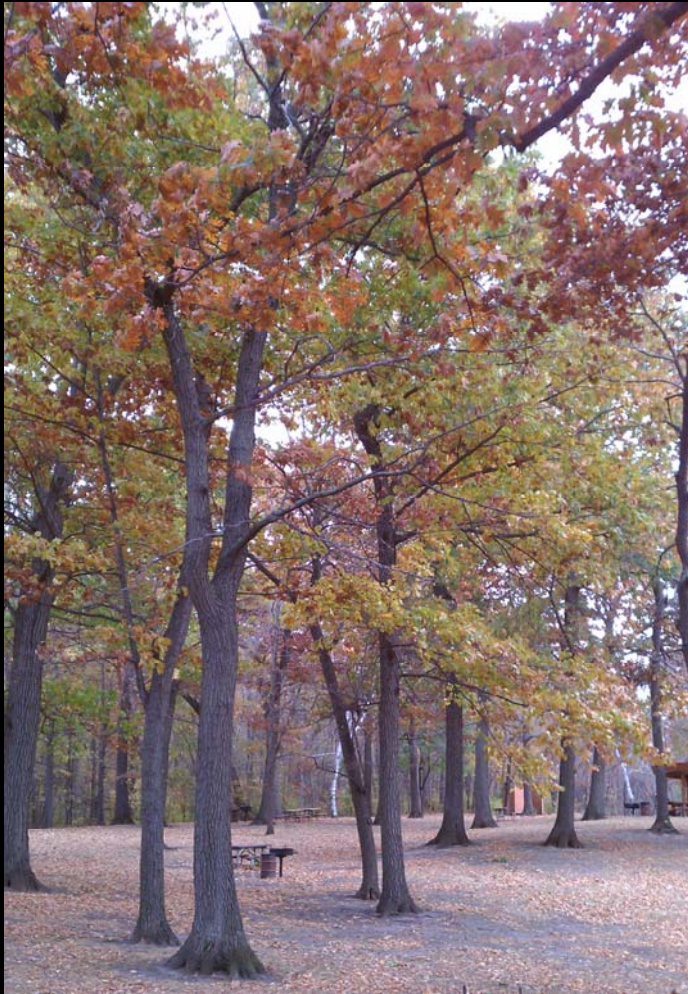


MIA LEHRER
landscape architecture

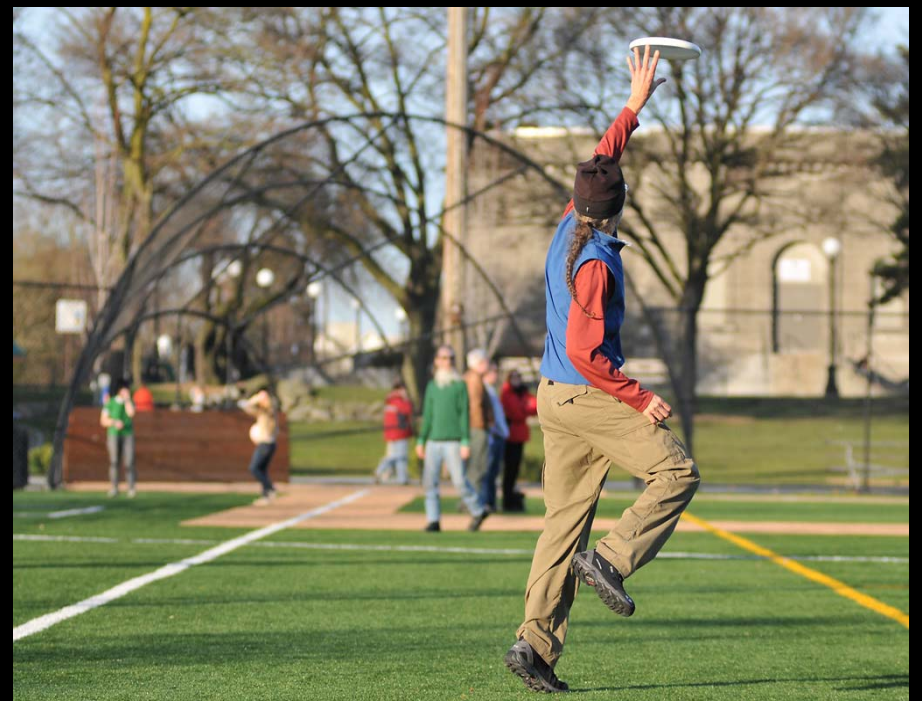
Activate : Recreation



Activate : Recreation



Activate : Recreation



Activate : Performance



Activate : Public Art



Activate : Public Art



Activate : Public Art



Brainstorming of Park Program

What are the possible needs that Victoria Park can fulfill?

BRAINSTORMING :

Preliminary program events :

- | | | |
|-----------------------------|---------|---------|
| • <u>Splash Pad</u> | • _____ | • _____ |
| • <u>Community Gardens</u> | • _____ | • _____ |
| • <u>Patrick's Memorial</u> | • _____ | • _____ |
| • <u>Play Area</u> | • _____ | • _____ |
| • _____ | • _____ | • _____ |
| • _____ | • _____ | • _____ |
| • _____ | • _____ | • _____ |
| • _____ | • _____ | • _____ |
| • _____ | • _____ | • _____ |
| • _____ | • _____ | • _____ |
| • _____ | • _____ | • _____ |

Public Comments?

NEXT STEPS :

**Next Meeting:
Tuesday, December 4, 2012
6:00 – 8:00 pm**

Meeting #3: Inventory and analysis of existing site influences including views, traffic, site features, trees, circulation, smells, utilities, context, neighborhood impacts, history, regional concerns....everything that may influence the design of Victoria Park.