



ST. PAUL, MINNESOTA

Signage Booklet Index:

Exterior Signage Site Monument Sign Type A	<i>Page 1–3</i>
Exterior Signage Wall Mounted Temporary Banner Frames Sign Type B	<i>Page 4–7</i>
Exterior Signage Wall Mounted Dimensional Letters Sign Type D	<i>Page 8</i>
Exterior Signage Wall Mounted Sign Type T	<i>Page 9–12</i>
Interior Signage Wall Mounted Sign Type T	<i>Page 13–14</i>
Interior Signage Wall Mounted Sign Type W	<i>Page 15–16</i>



Union Depot Monument Signage with Tenant Listings

Exterior Signage | Site Monument Sign Type A

The Need For Monument Signage with Tenant Listings

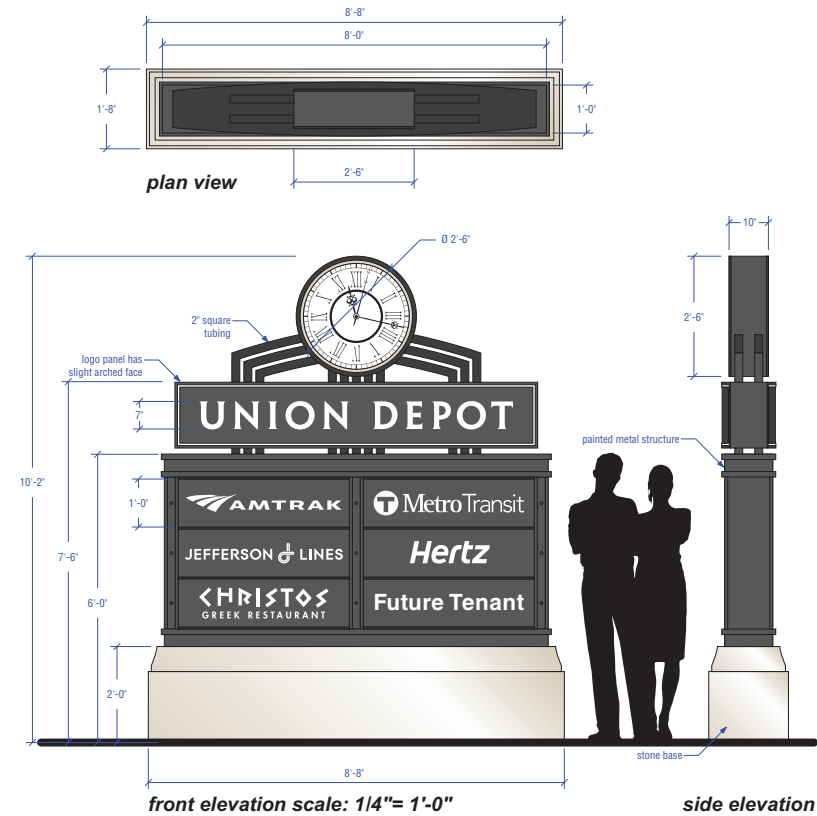
With the unique nature of the new Union Depot Site there is a need for larger site identification which would include the many tenants who would reside on the site. These monument signs would be located so that both vehicular traffic and pedestrian would be able to view at key decision making points. These monument signs are also crucial since the Depot's site is spread across numerous blocks and has various architectural details which may not at first appear as part of the same site.

Key Notes:

- Signs use similar architectural details like the layered green metal and glass mullions located at the Depot's Headhouse Entry and the stone base detailed edge.
- The signs are internally lit with only the text being backlit (except for opt. 3). The backlit white text is 1/2" white push through acrylic with the grey all being opaque painted metal. This detail will keep the signs easy to read, clean and not over pollute with light.
- The first design option would have an internally lit clock faces which would benefit and inform neighboring traffic while at the same time relate back to the fact that the Depot is a functioning transit hub.



Depot's Headhouse Entry Details

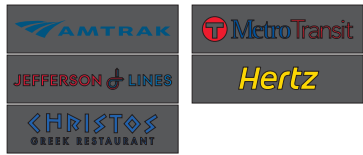


front elevation scale: 1/4"= 1'-0"
SIGN TYPE A1
Primary Monument Sign Design Opt 1

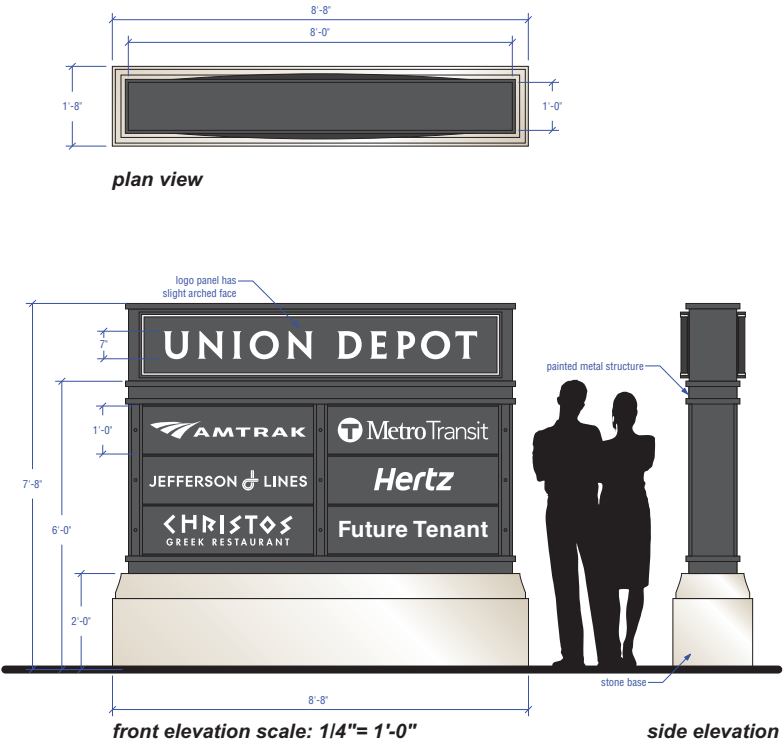
(2-sided internally illuminated sign. All white text is backlit 1/2" white push through acrylic)
(Clock is also 2-sided and internally illuminated)



Design Consideration:
Since there are a set number of 10 tenant panels and the monument sign will not increase in size, future tenants may share a tenant panel.

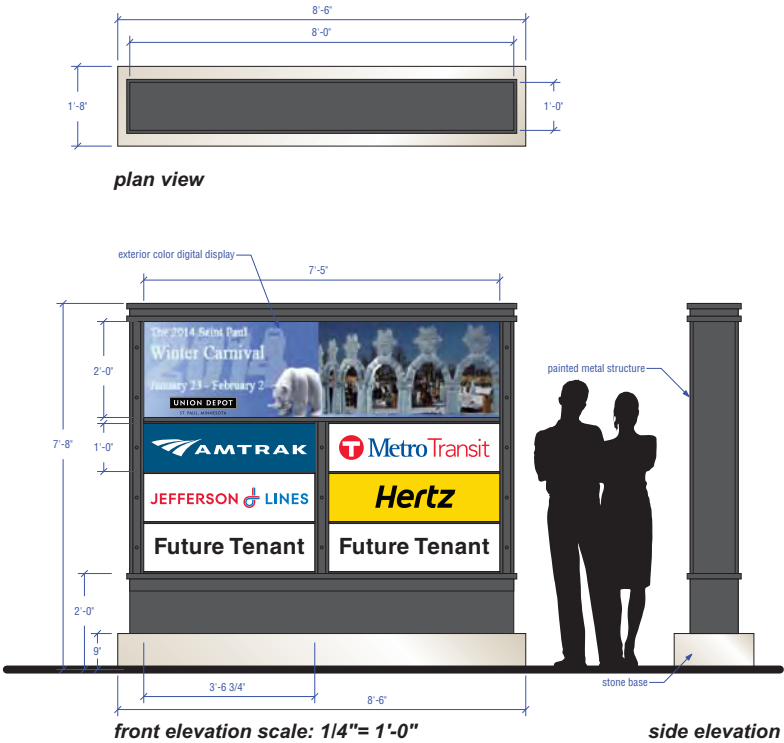


Design Consideration:
A design option for the internally lit tenant panels, instead of the tenant names only presented as white on a dark background, at night when the tenants are backlit, their logos could be full color. While during daylight hours, when not lit, they would revert back to white on dark background.



front elevation scale: 1/4"= 1'-0"
SIGN TYPE A1
Primary Monument Sign Design Opt 2

(2-sided internally illuminated sign. All white text is backlit 1/2" white push through acrylic)

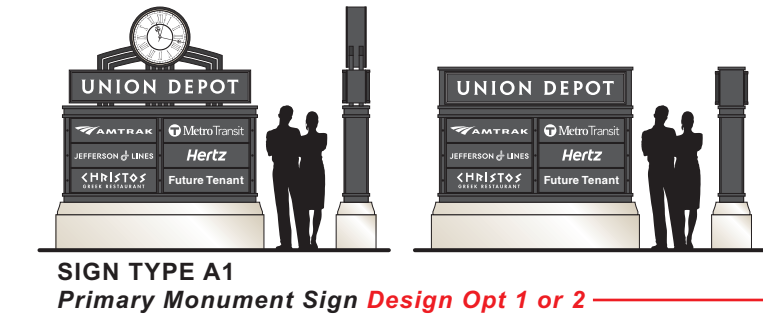


front elevation scale: 1/4"= 1'-0"
SIGN TYPE A2
Secondary Monument Sign

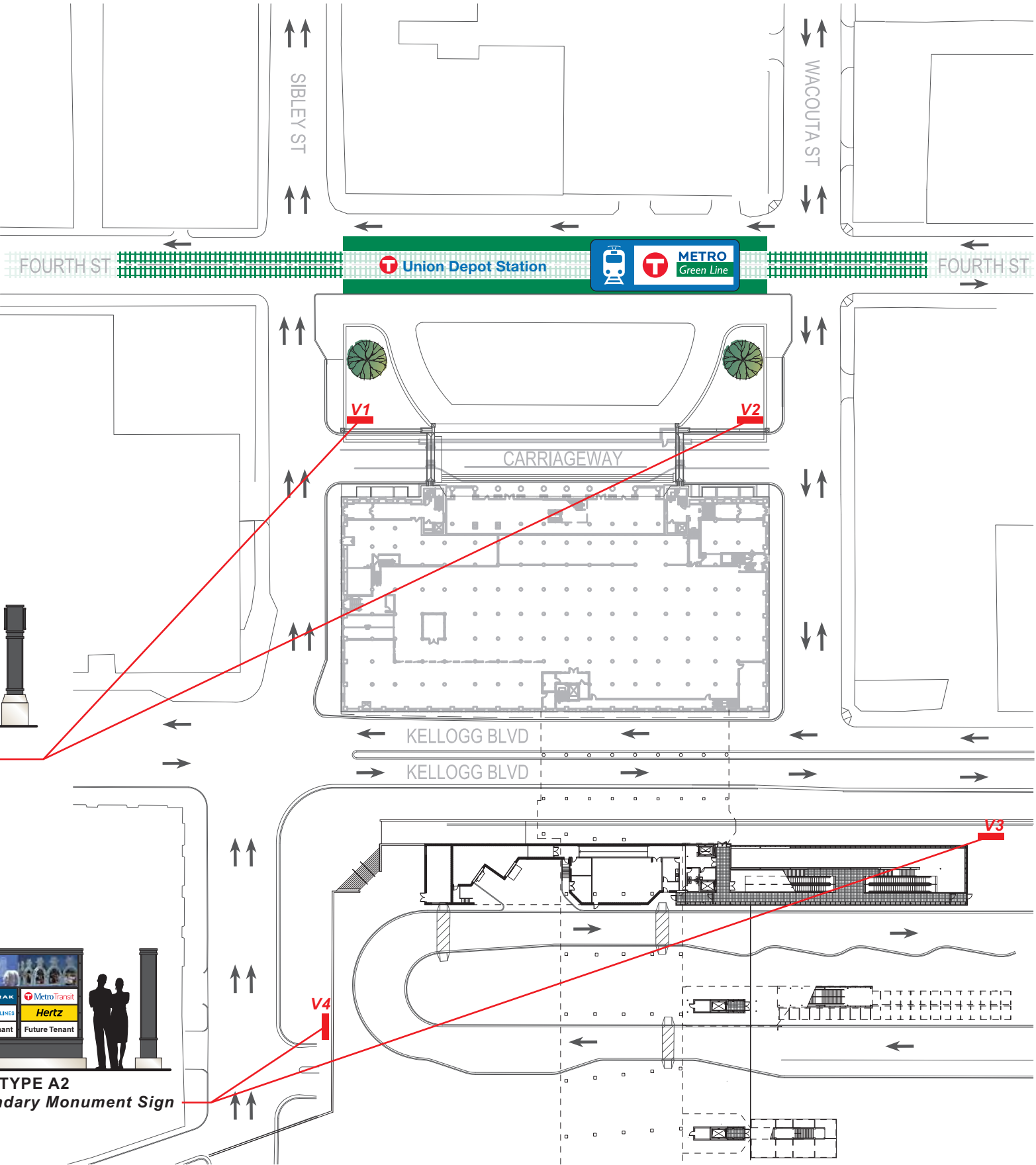
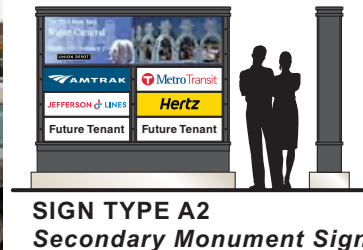
(1 or 2-sided internally illuminated sign. All tenant panels are fully backlit)
(Top of sign has digital display 7'-5"w x 2'-0"h to help promote Depot and Community Events)

Union Depot Monument Signage with Tenant Listings

Exterior Signage | Site Monument Sign Type A



V4



V2



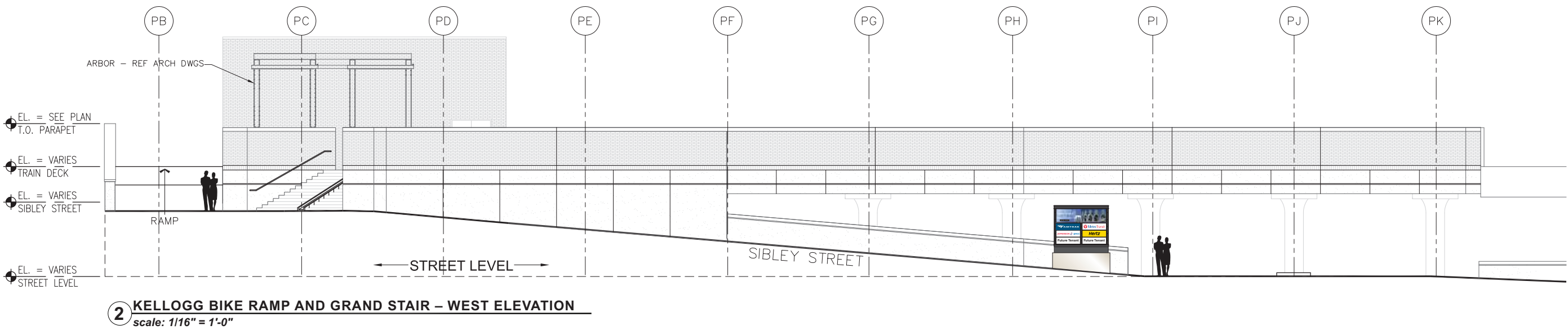
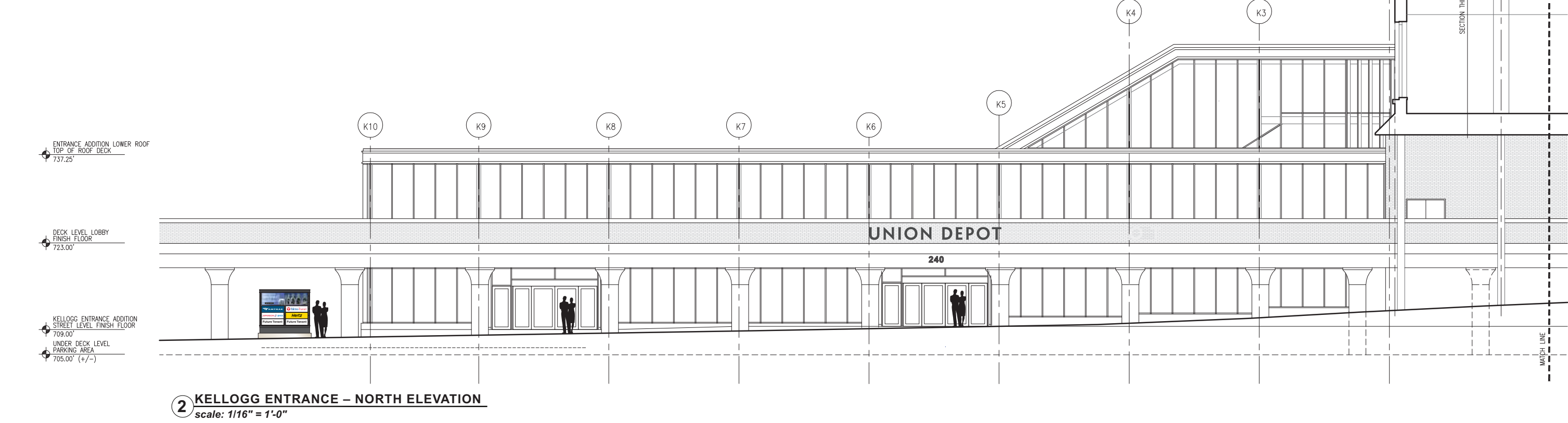
V3

UNION DEPOT



Union Depot Monument Signage with Tenant Listings

Exterior Signage | Site Monument Sign Type A2



UNION DEPOT



Union Depot Large Promotional Temporary Banners

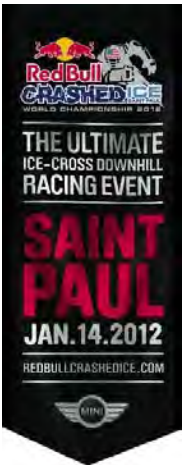
Exterior Signage | Wall Mounted Temporary Banner Frames Sign Type B

The Need For Large Promotional Banners

The nature of the Union Depot is to be a vibrant addition to the Lowertown community. Besides housing a number of new business which include transit, dining, etc. there are numerous possibilities for larger functions both public, private and seasonal. Large promotional banners like those used at the Science Museum of Minnesota or Landmark Center will help keep the community informed. Although the banner frames will be permanent, the banners will be of a stretched fabric and easily changeable.

Key Notes:

- All mounting will occur within the grout lines. At no time will any holes be drilled into the historic stone or brick.
- The stretched fabric will conceal the majority of the banner frames, leaving a very clean appearance similar to that seen at the Science Museum of Minnesota and the vertical red banners seen at Landmark Center.
- In order to be consistent, there will be a limited number of set sizes for these banners with the primary sizes being 8'w x 28'h and 6'w x 12'w and a depth of no more than 6" depending on mounting condition. Banner mounting conditions will include one sided wall mounted vertical.



Example of Community Events that could be promoted on proposed Union Depot Temporary Banners

- Examples above could highlight the use of Transit within the Metro and promote Lowertown along with all of Saint Paul.



Similar Example at the Science Museum of Minnesota

- Example above shows four similar banners installed to form one larger graphic image.

Similar Example at the Landmark Center

- Examples above show various sized banners installed in various formats.

Union Depot Large Promotional Temporary Banners

Exterior Signage | Wall Mounted Temporary Banner Frames Sign Type B



1 HEAD HOUSE – NORTH ELEVATION
Quarterly Change Out Banners



2 CONCOURSE – EAST ELEVATION
Quarterly Change Out Banners

2 HEAD HOUSE – EAST ELEVATION
Quarterly Change Out Banners

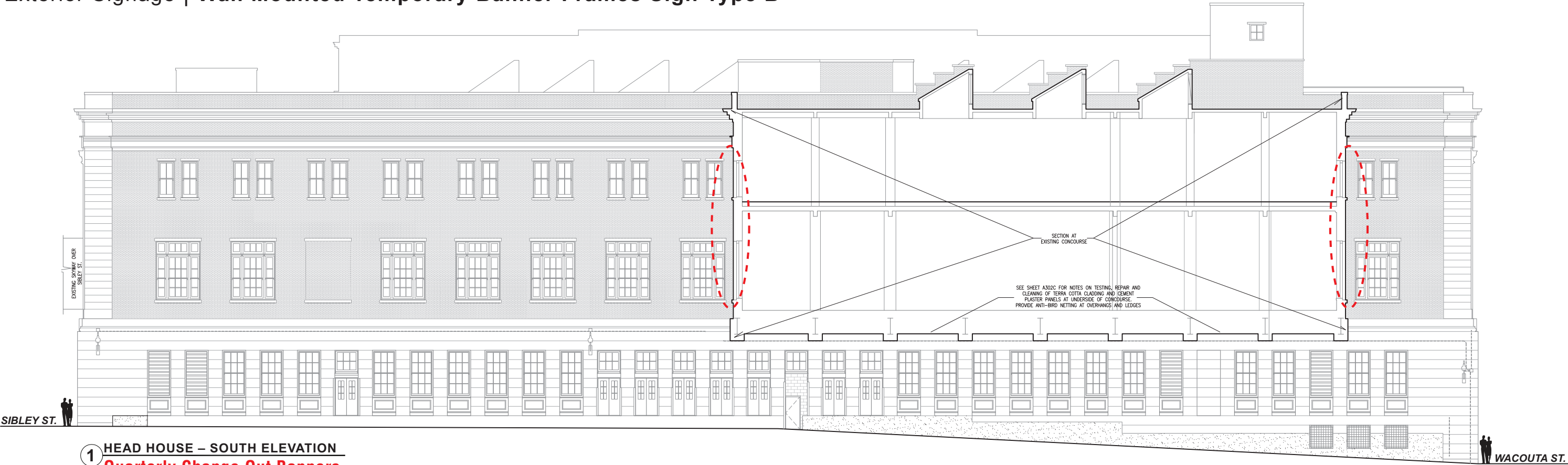
UNION DEPOT



EIDAHL ENVIRONMENTAL
design, inc.

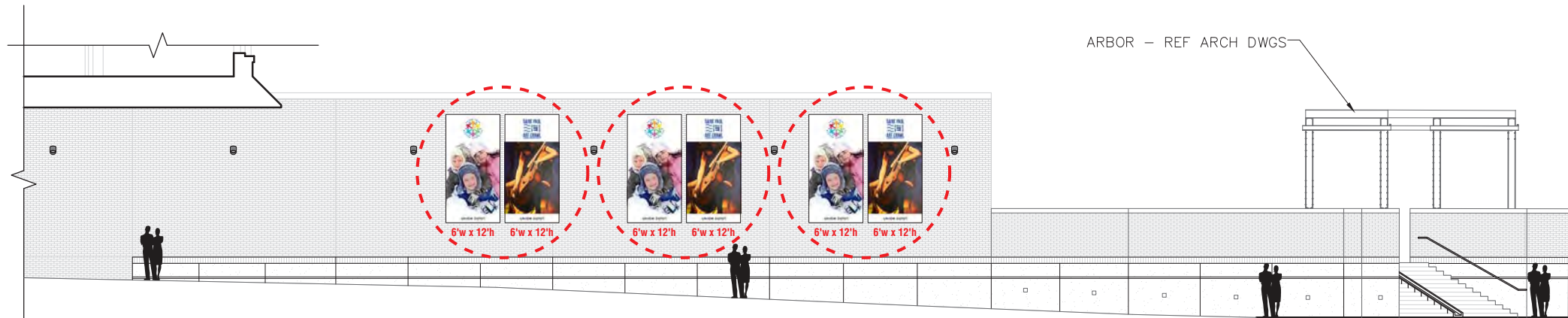
Union Depot Large Promotional Temporary Banners

Exterior Signage | Wall Mounted Temporary Banner Frames Sign Type B



Union Depot Large Promotional Temporary Banners

Exterior Signage | Wall Mounted Temporary Banner Frames Sign Type B



4 KELLOGG BIKE RAMP AND GRAND STAIR – NORTH ELEVATION
scale: 1/16" = 1'-0" 30 Day Current Events Change Out Banners



KELLOGG – WEST VIEW



HEAD HOUSE – NORTHWEST VIEW
Quarterly Change Out Banners



KELLOGG CONCOURSE – EAST VIEW
Quarterly Change Out Banners



KELLOGG BIKE RAMP – NORTHWEST VIEW
30 Day Current Events Change Out Banners



HEAD HOUSE – NORTHEAST VIEW
Quarterly Change Out Banners



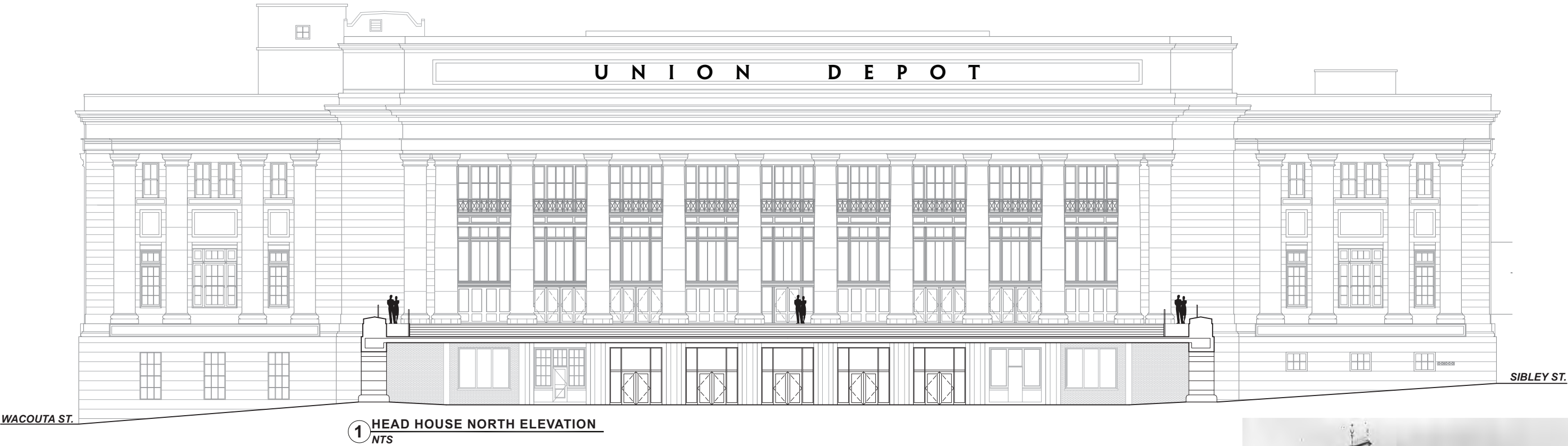
KELLOGG CONCOURSE – WEST VIEW
Quarterly Change Out Banners



KELLOGG BIKE RAMP – NORTHWEST VIEW
30 Day Current Events Change Out Banners

Union Depot Large Dimensional Letters

Exterior Signage | Wall Mounted Dimensional Letters Sign Type D



3'-0" U N I O N D E P O T

front elevation scale: 1/8"= 1'-0"
SIGN TYPE D
Large Dimensional Letters
(6" deep pin-mounted dimensional letters)

The Need For Large Dimensional Letters for Front ID

The addition of the large dimensional letters "UNION DEPOT" will be reminiscent to the original Union Depot which was built and burned down 1881-1913. It will also help identify the site's historic Head House to visitors new to the area.

Key Notes:

- Letters are not illuminated and painted to match the current address numbers located on the front of the building.
- All mounting will occur within the grout lines. At no time will any holes be drilled into the historic stone.



UNION DEPOT



EIDAHL ENVIRONMENTAL
design, inc.

Union Depot Wall Mounted ID with Tenant Listings

Exterior Signage | Wall Mounted Sign Type T

The Need For Wall Mounted ID with Tenant Listings

With the unique nature of the new Union Depot Site there is a need for secondary site identification which would be located at the numerous building entry points. These signs would highlight which tenants can be accessed at these entry points or an overall listing of all the primary tenants located within Union Depot.

Key Notes:

- Signs use similar architectural details shown in the earlier proposed Monument Sign Type A.
- The signs are not internally lit, but can be lit above like other signage present in the Lowertown area.



Similar Example at Market House (daylight and evening examples)



Similar Example at Lowertown Lofts (daylight and evening examples)



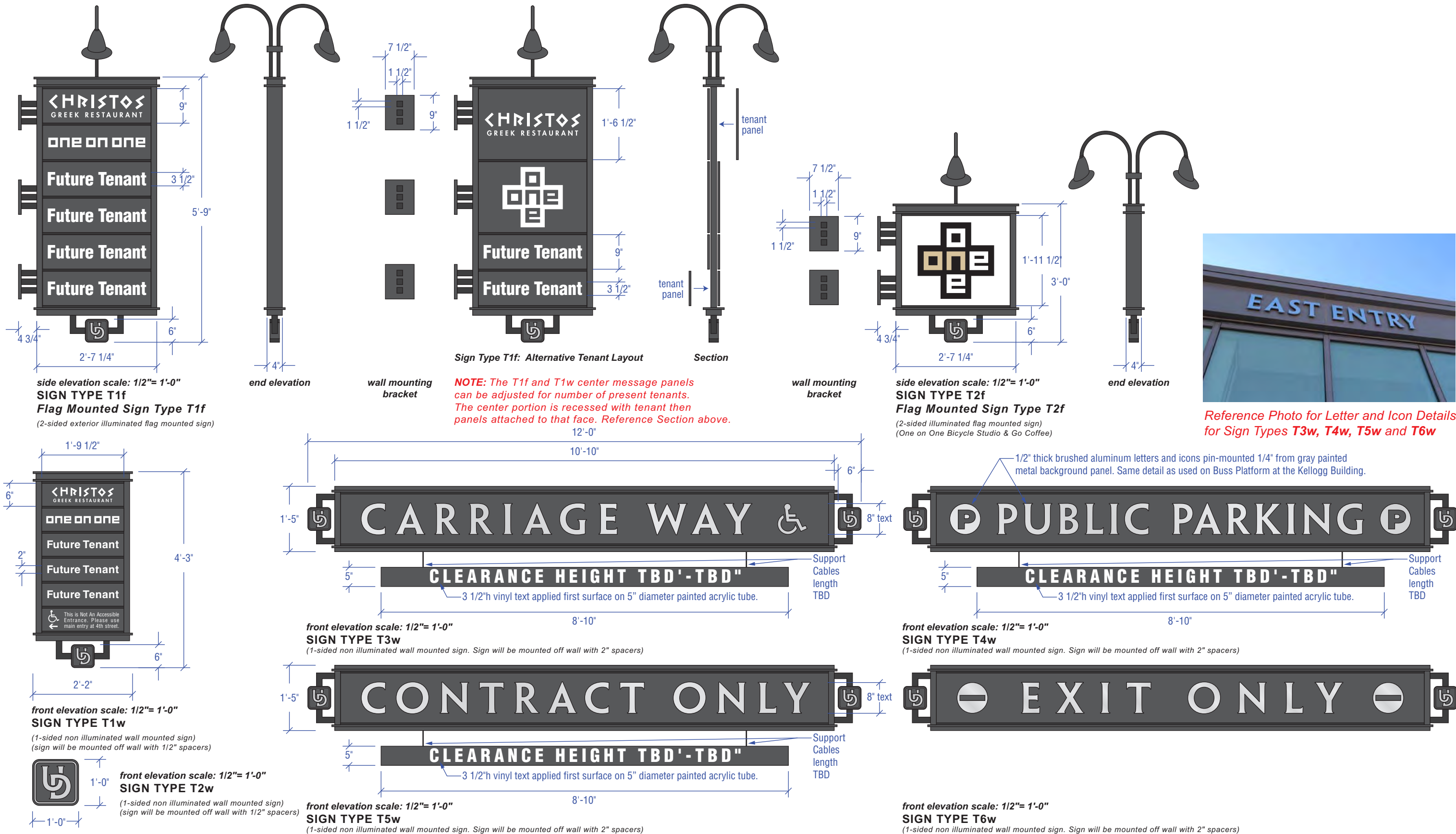
Similar Example at Barrio (daylight and evening examples)



Similar Example at The Great Northern (daylight and evening examples)

Union Depot Wall Mounted Directional, ID and Tenant Signage

Exterior Signage | Wall Mounted Sign Type T



Union Depot Wall Mounted Directional, ID and Tenant Signage

Exterior Signage | Wall Mounted Sign Type T



1 HEAD HOUSE – NORTH ELEVATION
NTS



2 HEAD HOUSE – EAST ELEVATION
NTS



WACOUTA ST. – NORTHEAST VIEW
Sign Type T5w and T6w



WACOUTA ST. – NORTHEAST VIEW
Sign Type T1f and T1w

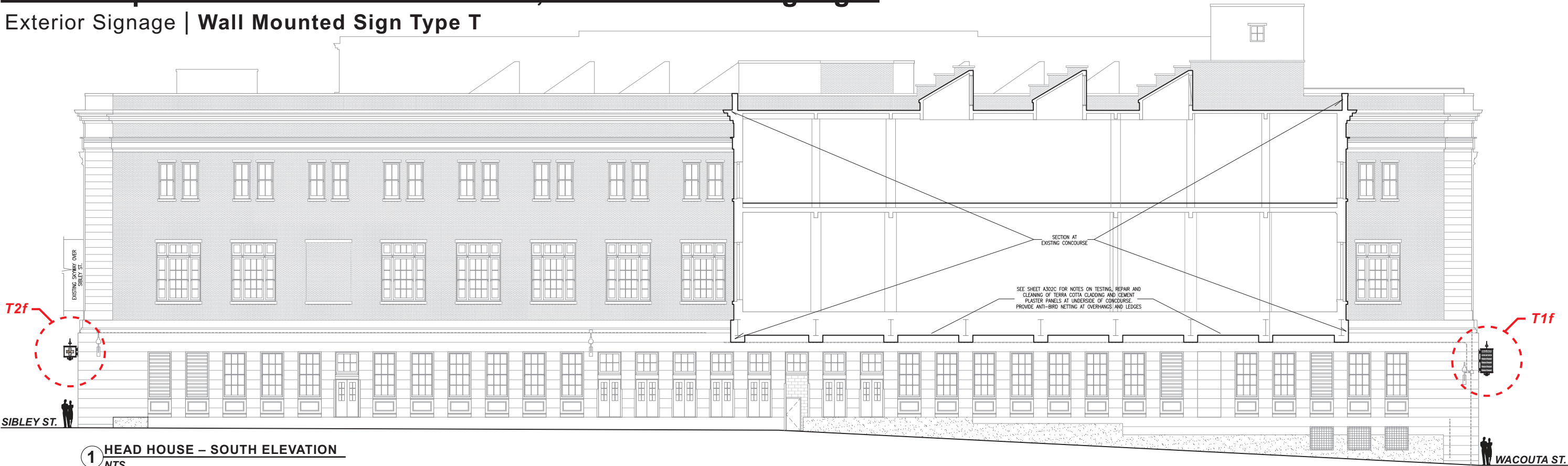
UNION DEPOT



EIDAHL ENVIRONMENTAL
design, inc.

Union Depot Wall Mounted Directional, ID and Tenant Signage

Exterior Signage | Wall Mounted Sign Type T



SIBLEY ST. - WEST VIEW
Sign Type T3w



SIBLEY ST. - NORTHWEST VIEW
• Example signage in same location 08/03/1925

UNION DEPOT



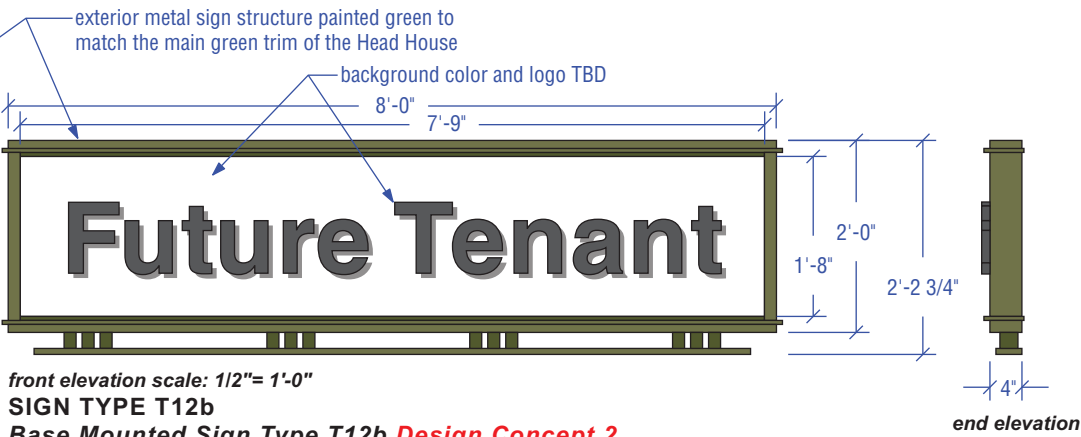
EIDAHL ENVIRONMENTAL
design, inc.

Union Depot Base Mounted Tenant ID

Interior Signage | Base Mounted Sign Type T



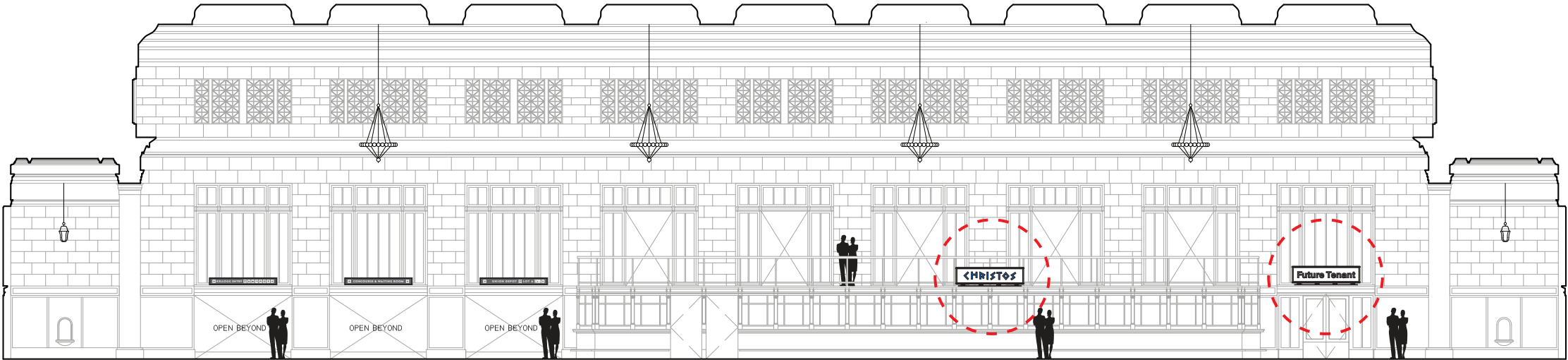
front elevation scale: 1/12"= 1'-0"
SIGN TYPE T12b
Base Mounted Sign Type T12b **Design Concept 1**
(1-sided illuminated base mounted sign, tenant logo to be created to simulate neon channel letters with LED lighting)
NOTE: Christos is just used as an example for this sign type. Future Tenants for these sign type locations are TBD.



front elevation scale: 1/12"= 1'-0"
SIGN TYPE T12b
Base Mounted Sign Type T12b **Design Concept 2**
(1-sided non-illuminated base mounted sign, tenant logo to be dimensional with contrasting colors)
NOTE: Christos is just used as an example for this sign type. Future Tenants for these sign type locations are TBD.



• Example of past illuminated tenant signage.



2 HEAD HOUSE INTERIOR – SOUTH ELEVATION
scale: 1/16" = 1'-0"



2 HEAD HOUSE INTERIOR – WEST ELEVATION
scale: 1/16" = 1'-0"



HEAD HOUSE – CHRISTOS
Sign Type T12b



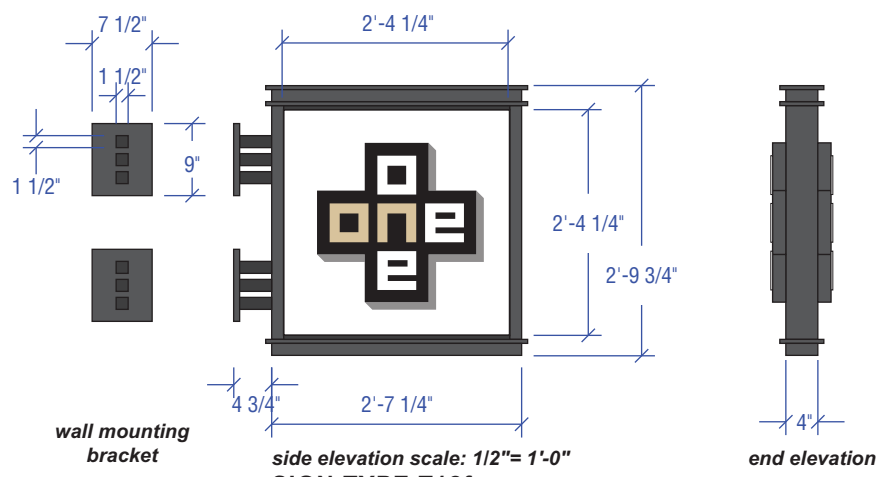
HEAD HOUSE – TENANT TBD
Sign Type T12b



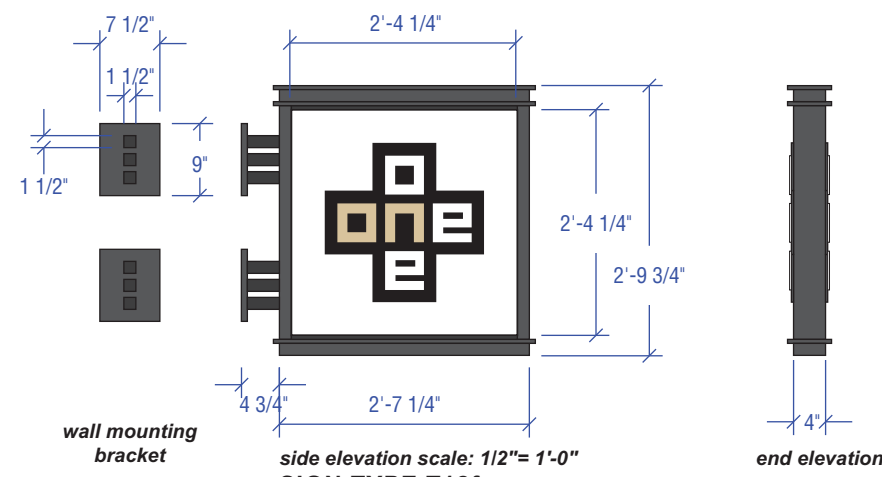
HEAD HOUSE – TENANT TBD
Sign Type T12b

Union Depot Wall Mounted Tenant ID

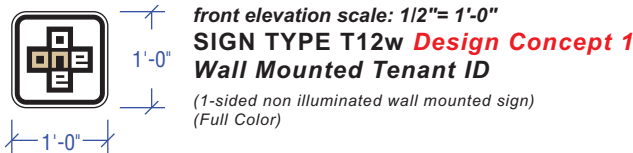
Interior Signage | Wall Mounted Sign Type T



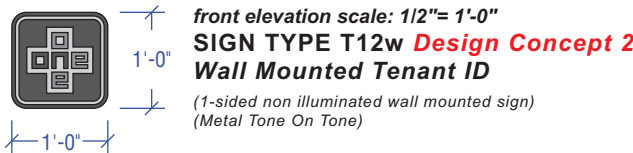
side elevation scale: 1/2"= 1'-0"
SIGN TYPE T12f
Flag Mounted Sign Type T12f Design Concept 1
(2-sided illuminated flag mounted sign)
(Tenant logo to be created to simulate neon channel letters with LED lighting)
NOTE: One on One Bicycle Studio & Go Coffee is just used as an example for this sign type. Future Tenants for these sign type locations are TBD.



side elevation scale: 1/2"= 1'-0"
SIGN TYPE T12f
Flag Mounted Sign Type T12f Design Concept 2
(2-sided non-illuminated flag mounted sign)
(Tenant logo to be created with minimum dimensional or no depth)
NOTE: One on One Bicycle Studio & Go Coffee is just used as an example for this sign type. Future Tenants for these sign type locations are TBD.



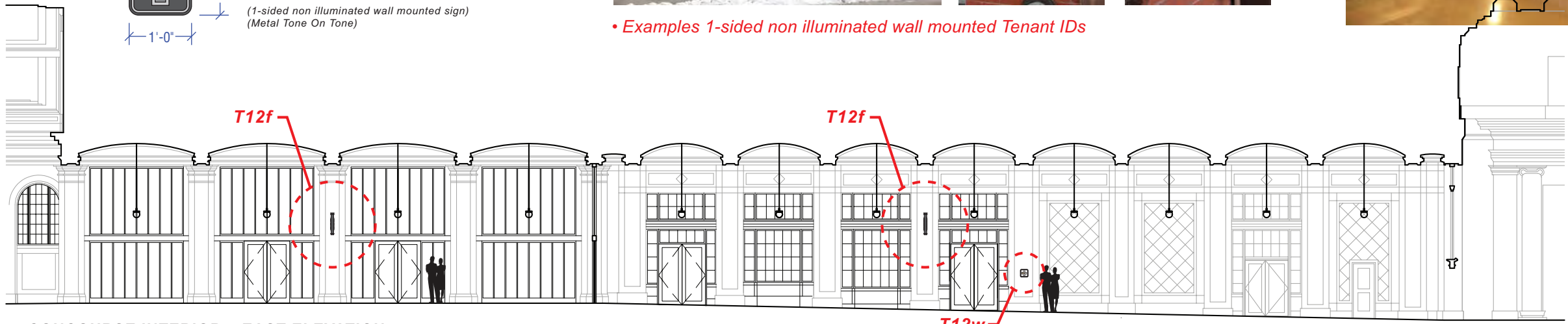
front elevation scale: 1/2"= 1'-0"
SIGN TYPE T12w Design Concept 1
Wall Mounted Tenant ID
(1-sided non illuminated wall mounted sign)
(Full Color)



front elevation scale: 1/2"= 1'-0"
SIGN TYPE T12w Design Concept 2
Wall Mounted Tenant ID
(1-sided non illuminated wall mounted sign)
(Metal Tone On Tone)



• Examples 1-sided non illuminated wall mounted Tenant IDs



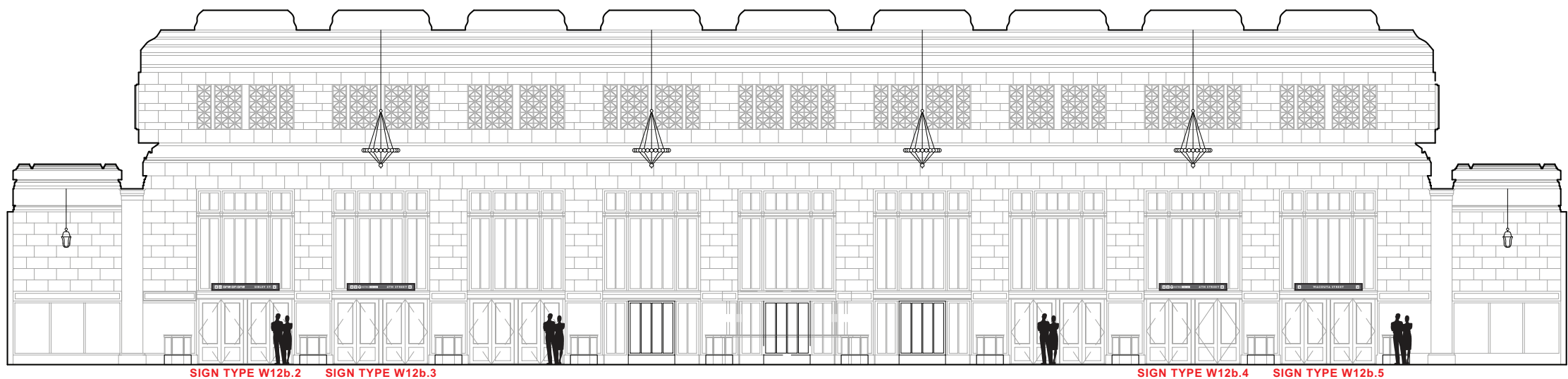
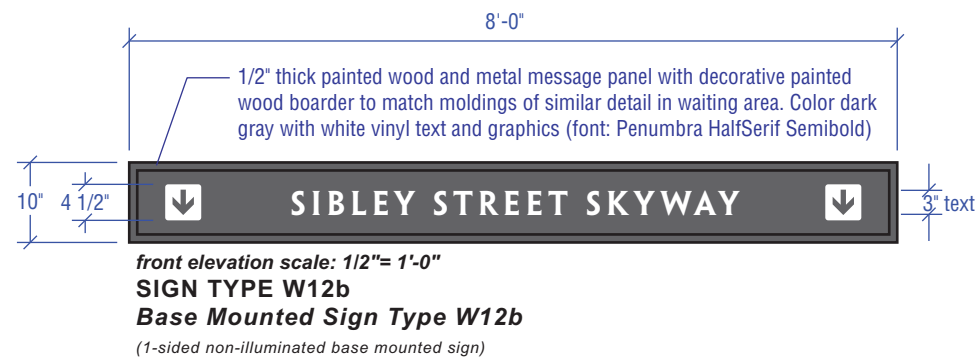
2 CONCOURSE INTERIOR – EAST ELEVATION
scale: 1/16" = 1'-0"



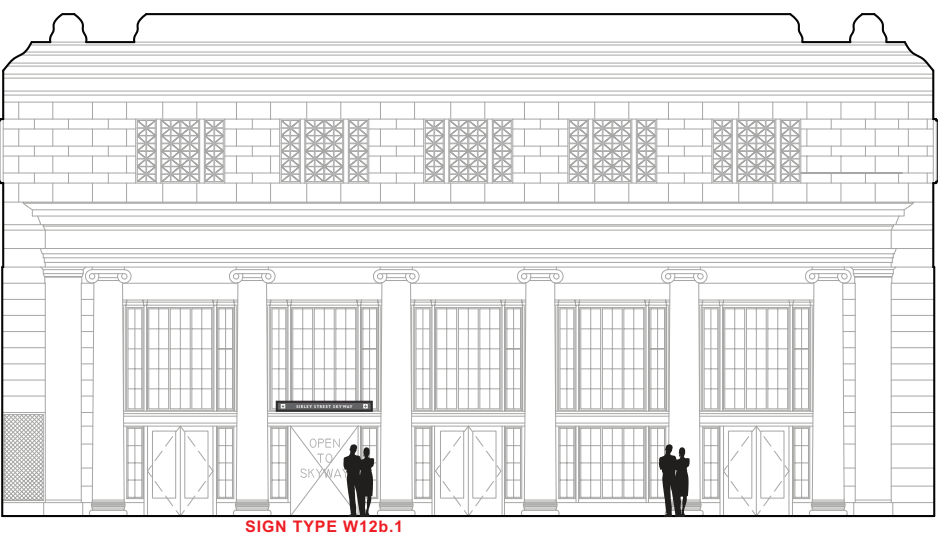
• Examples of neon illuminated, flag mounted signage within the Union Depot Concourse.

Union Depot Wall Mounted Directional

Interior Signage | Wall Mounted Sign Type W



1 HEAD HOUSE INTERIOR – NORTH ELEVATION
scale: 1/16" = 1'-0"



2 HEAD HOUSE INTERIOR – WEST ELEVATION
scale: 1/16" = 1'-0"



front elevation scale: 1/4"= 1'-0"
SIGN TYPE W12b.1



front elevation scale: 1/4"= 1'-0"
SIGN TYPE W12b.5



front elevation scale: 1/4"= 1'-0"
SIGN TYPE W12b.9



front elevation scale: 1/4"= 1'-0"
SIGN TYPE W12b.13



front elevation scale: 1/4"= 1'-0"
SIGN TYPE W12b.2



front elevation scale: 1/4"= 1'-0"
SIGN TYPE W12b.6



front elevation scale: 1/4"= 1'-0"
SIGN TYPE W12b.10



front elevation scale: 1/4"= 1'-0"
SIGN TYPE W12b.14



front elevation scale: 1/4"= 1'-0"
SIGN TYPE W12b.3



front elevation scale: 1/4"= 1'-0"
SIGN TYPE W12b.7



front elevation scale: 1/4"= 1'-0"
SIGN TYPE W12b.11



front elevation scale: 1/4"= 1'-0"
SIGN TYPE W12b.15



front elevation scale: 1/4"= 1'-0"
SIGN TYPE W12b.4



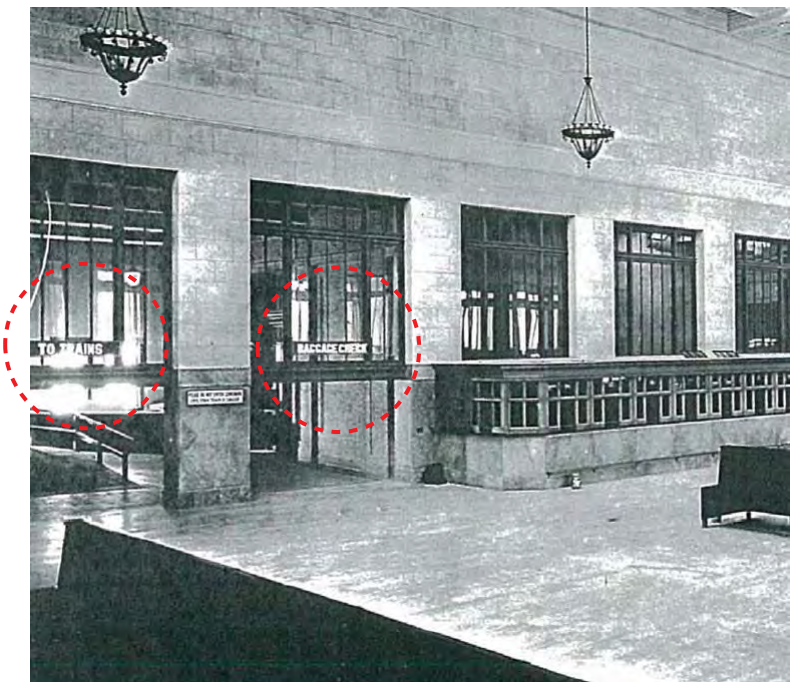
front elevation scale: 1/4"= 1'-0"
SIGN TYPE W12b.8



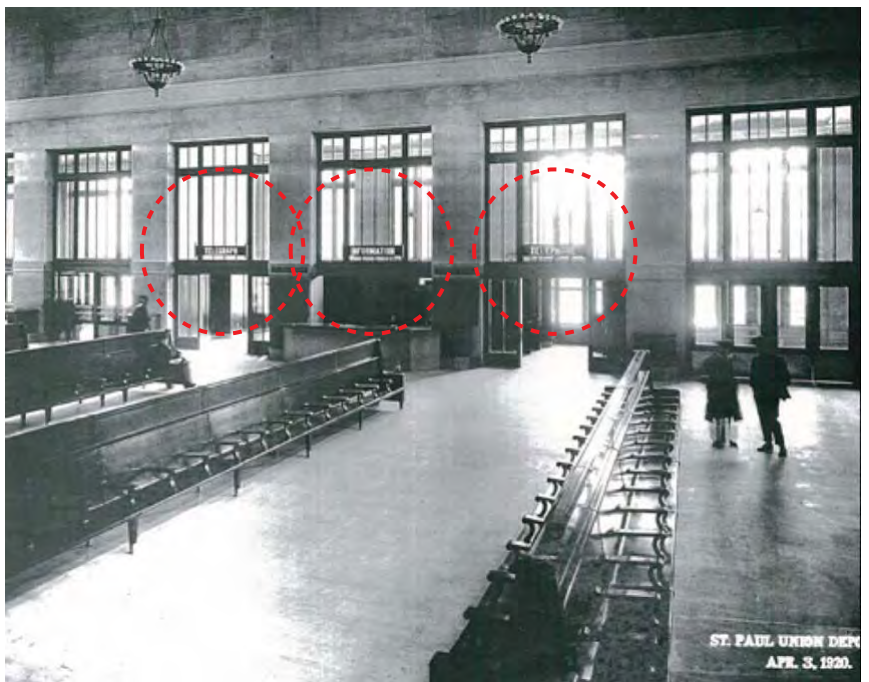
front elevation scale: 1/4"= 1'-0"
SIGN TYPE W12b.12



HEAD HOUSE – Sign Type W12b

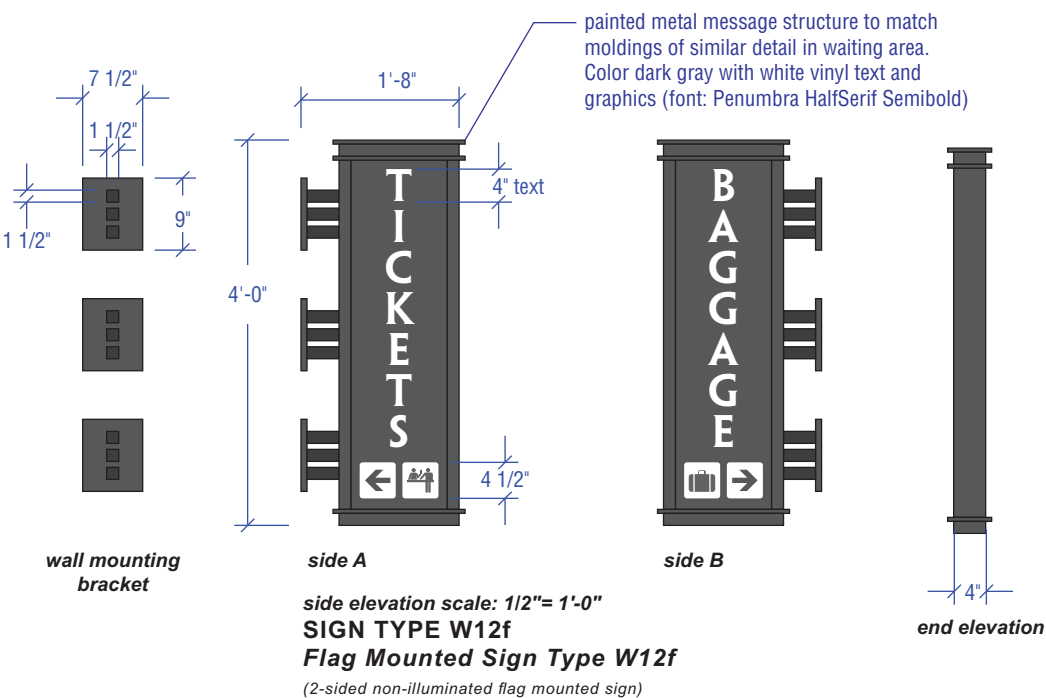


• Examples internally lit directional signage present within the Union Depot Head House 1920

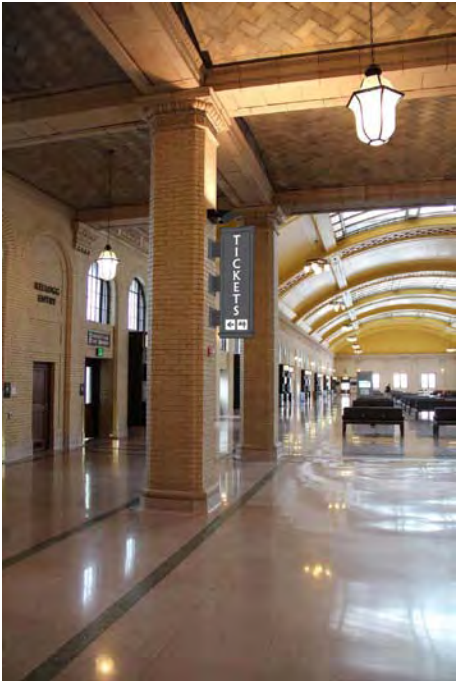


Union Depot Wall Mounted Directional

Interior Signage | Wall Mounted Sign Type W



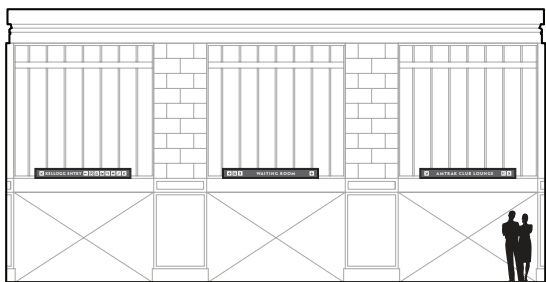
CONCOURSE & WAITING ROOM
Sign Type W12f



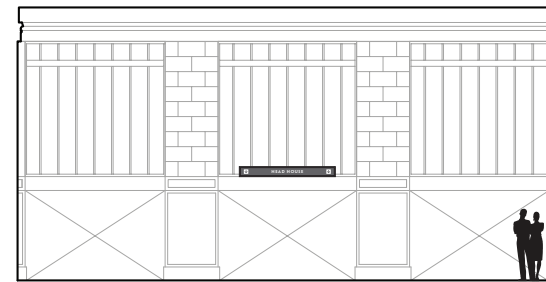
CONCOURSE & WAITING ROOM
Sign Type W12f



CONCOURSE & WAITING ROOM
Sign Type W12f



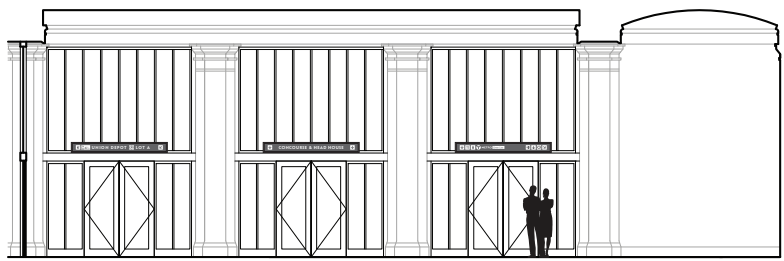
2 WAITING ROOM INTERIOR – SOUTH ELEVATION
scale: 1/16" = 1'-0"



3 CONCOURSE INTERIOR – NORTH ELEVATION
scale: 1/16" = 1'-0"



4 CONCOURSE INTERIOR – EAST ELEVATION
scale: 1/16" = 1'-0"



5 WAITING ROOM INTERIOR – NORTH ELEVATION
scale: 1/16" = 1'-0"