

Preservation Alliance of Minnesota

10 Most Endangered Historic Minnesota Properties

The Mississippi River Valley at St. Paul

Photographs and Maps

Bennet Swanson, Federal Art Project, 1936

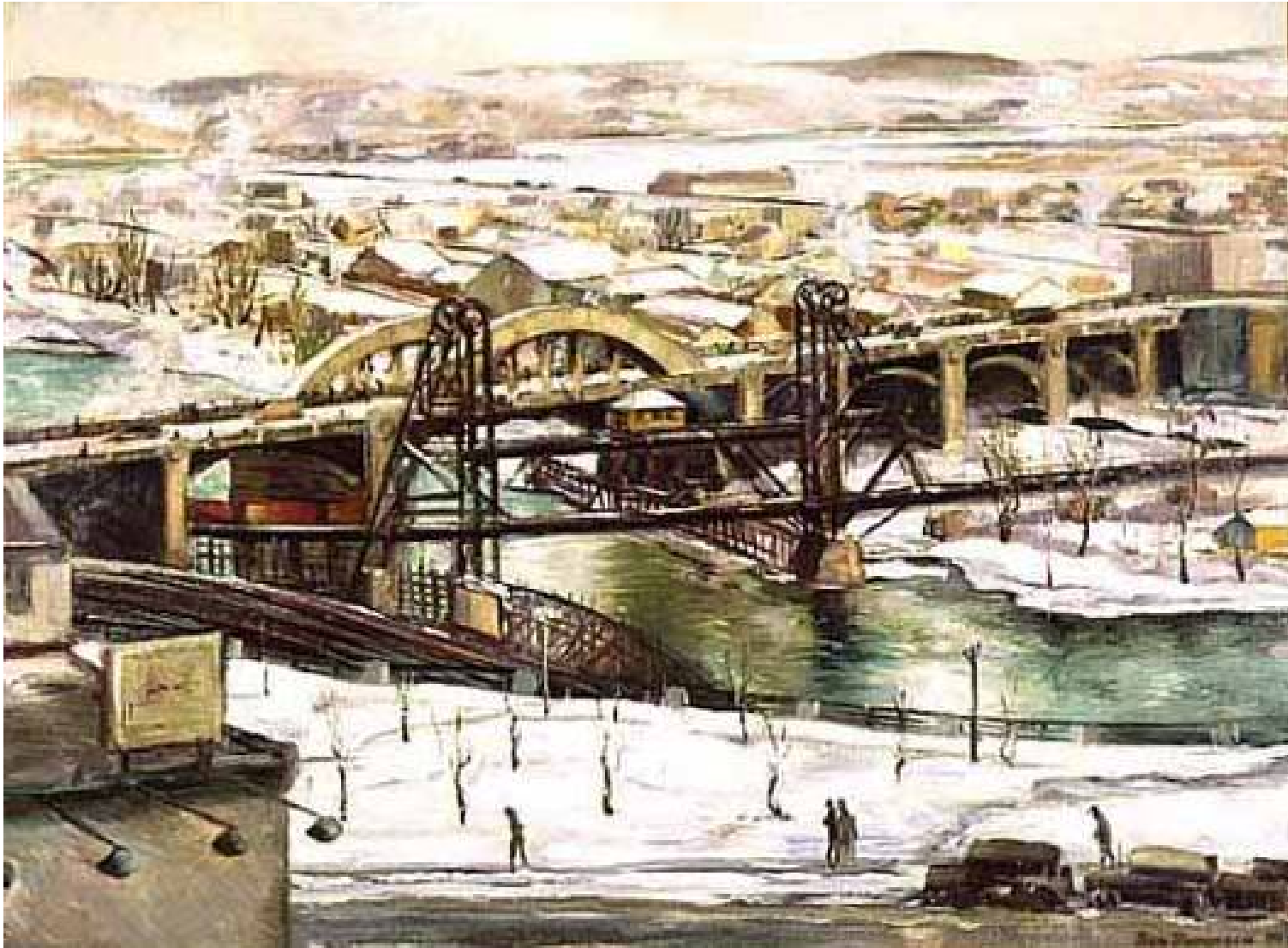


Photo 1. Wide views of the valley from St. Paul's streets, as Twain saw in 1882. Looking downstream. MHS.

St. Paul from below Holman Field



Photo 2. Looking upstream towards St. Paul. MNRRA

Mississippi River Valley at St. Paul from Daytons Bluff/Mounds Park, ca 1905



Photo 3. Note the relationship of downtown St. Paul to the West Side.
<http://www.tc.umn.edu>

From Daytons Bluff/Mounds Park, 2007



Photo 4. Overall, the relationship of downtown to West Side has remained the same for over 150 years. MNRRA.

From Cherokee Heights, 1874



Photo 5. Note relationship of floodplain to downtown. City on the hill. Bluffs surrounding floodplain with no tall buildings. MHS.

Downtown from the West Side, 1908



Photo 6. Note the relationship of buildings on the West Side to those downtown. MHS.

St. Paul from West Side Bluff, 2007



Photo 7. Note again the relationship of buildings on the West Side to those downtown. MNRRA.

Mississippi River Valley at St. Paul



Photo 8. From Wabasha Bridge looking downstream. Note how JLT/Comcast and First Bank Buildings block views. The Bridges Project would completely eliminate this view. MNRRA.

Kellogg Park, 1940, Looking Upstream



Photo 9.

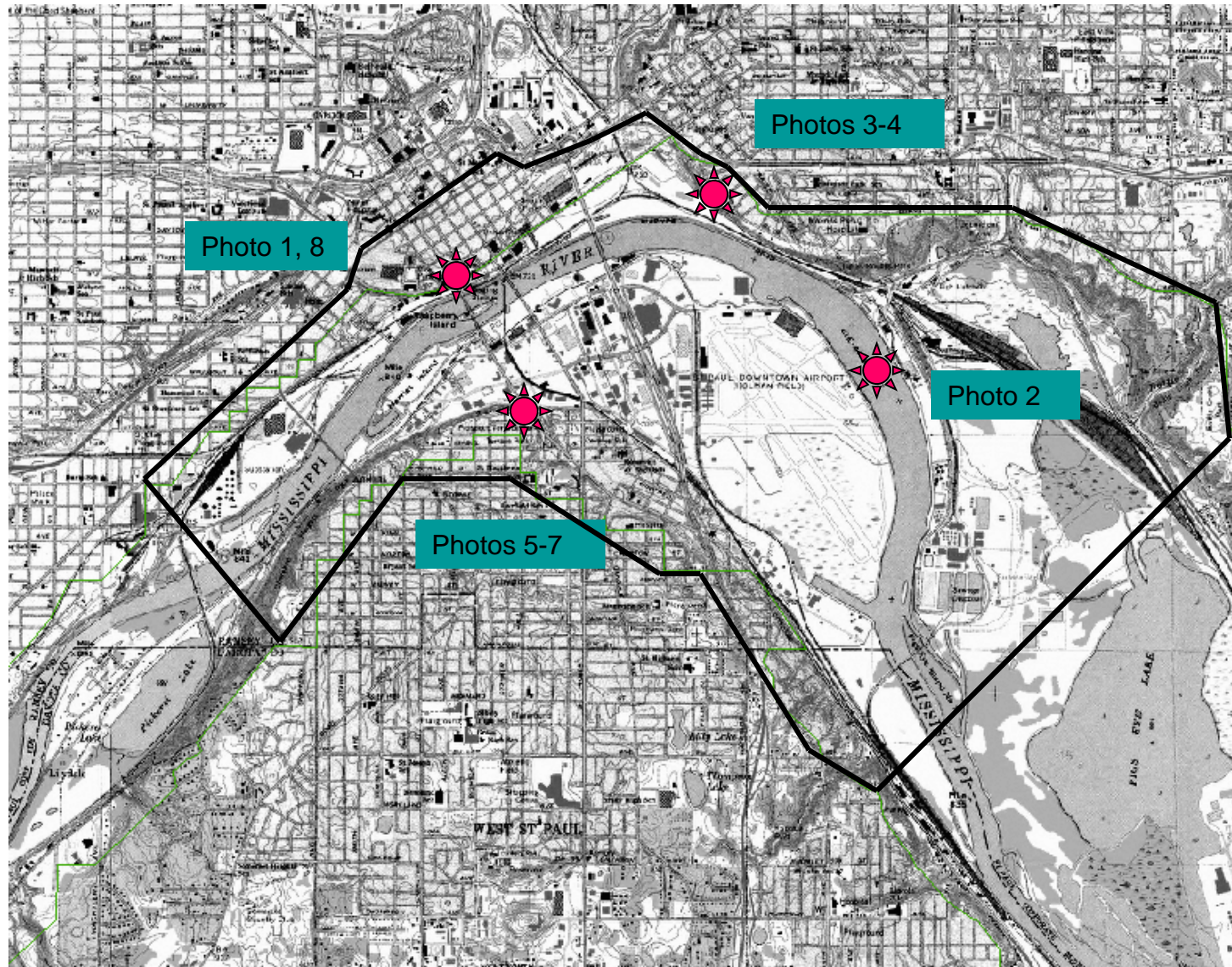
MHS.

Mississippi River Valley at St. Paul



Photo 10. Looking Upstream from next to the Wabasha Bridge. MNRRA

The Valley of St. Paul



Map 1. Rough Boundaries & Photo (Painting) Points

