

welcome





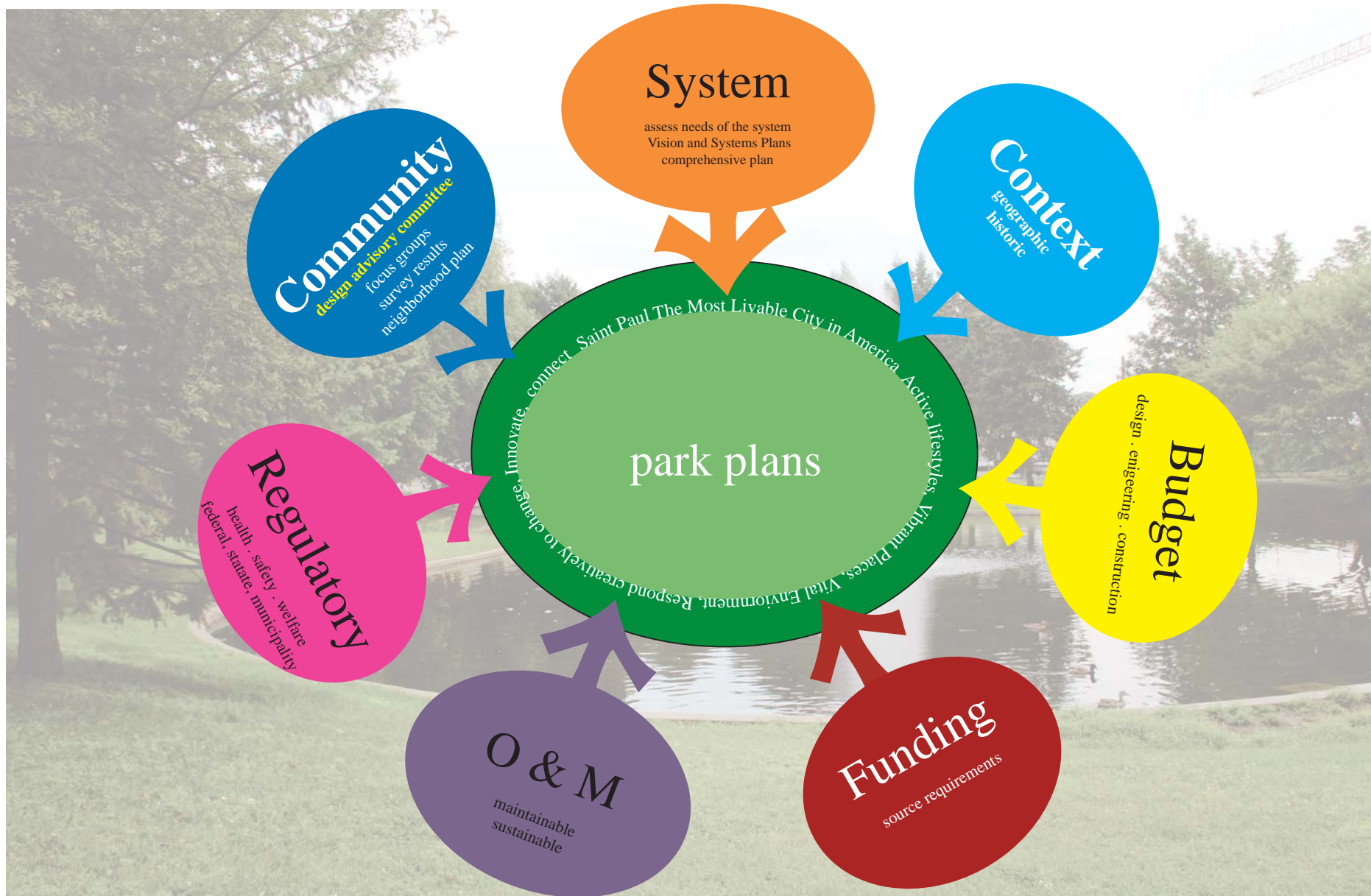
name, who you represent and 3 words to describe your vision

Design Advisory Committee

**communicate community and neighborhood needs
review plan concepts
provide input on major design elements and themes
bring suggestions from broader community
ensure full range of issues is discussed**

**Expectations:
respect for different perspectives
courtesy,
focused positive contribution
attendance**

Iris Park Improvements



DESIGN INFLUENCES

Design Advisory Committee Meeting #1
November 6, 2013

Iris Park Improvements

LCDA - TOD GRANT REQUIREMENTS

- ENHANCEMENT OF HIGH DENSITY MIXED USE DEVELOPMENT AMENITIES ADJACENT TO TRANSIT STATIONS USING PEDESTRIAN FRIENDLY DESIGN STANDARDS
- 170 SENIOR RENTAL HOUSING UNITS
- ACQUISITION OF 1890 UNIVERSITY
- CONNECTION IMPROVEMENTS TO EAST LYNNHURST
- IMPROVEMENTS TO IRIS PARK

LEGEND

- PARK BOUNDARY
- APPROX. PROJECT AREA
- PUBLIC WORKS CONSIDERATIONS FOR STREET CHANGES
- ROADWORK WITHIN PARK BOUNDARY
- EPISCOPAL HOMES DEVELOPMENT

DICKERMAN PARK

SITE ANALYSIS - CONTEXT

Design Advisory Committee Meeting #1
November 6, 2013

Iris Park Improvements



1880s

Iris Park

- University Avenue major connector for Minneapolis and Saint Paul dating back to a foot path and then horse trail, Old Military Road, Red River Ox Cart Trail.
- Union Park was the amusement destination on the Short Line with a dance pavilion, refreshment stands, merry go round, bowling alley and
- Prior and University major transfer point for all rail lines
- Real Estate developers subdivided land in the late 1800s including St. Anthony Park, Merriam Park, Tangletown near Macalester and Iris Park into "suburb" - commuter suburb known for windy layouts marketing the natural beauty
- Development was shaped by the street car system with rail stops developing into destinations for shopping, dining and entertainment.
- Lake Iris was a natural pond reshaped over time with the diversion of water from it
- 1982 a gathering plaza with tables and planters was added along with changes to the pond
- most recent changes to the park were made in 2000 with the removal of a gathering area in the center of the park due to complaints about unwanted behavior



1892



1900



1915

CONTEXT - HISTORICAL

Design Advisory Committee Meeting #1
November 6, 2013

Iris Park Improvements



1953

Design Advisory Committee Meeting #1
November 6, 2013

Iris Park Improvements

Saint
Paul Parks and Recreation



1974

Design Advisory Committee Meeting #1
November 6, 2013

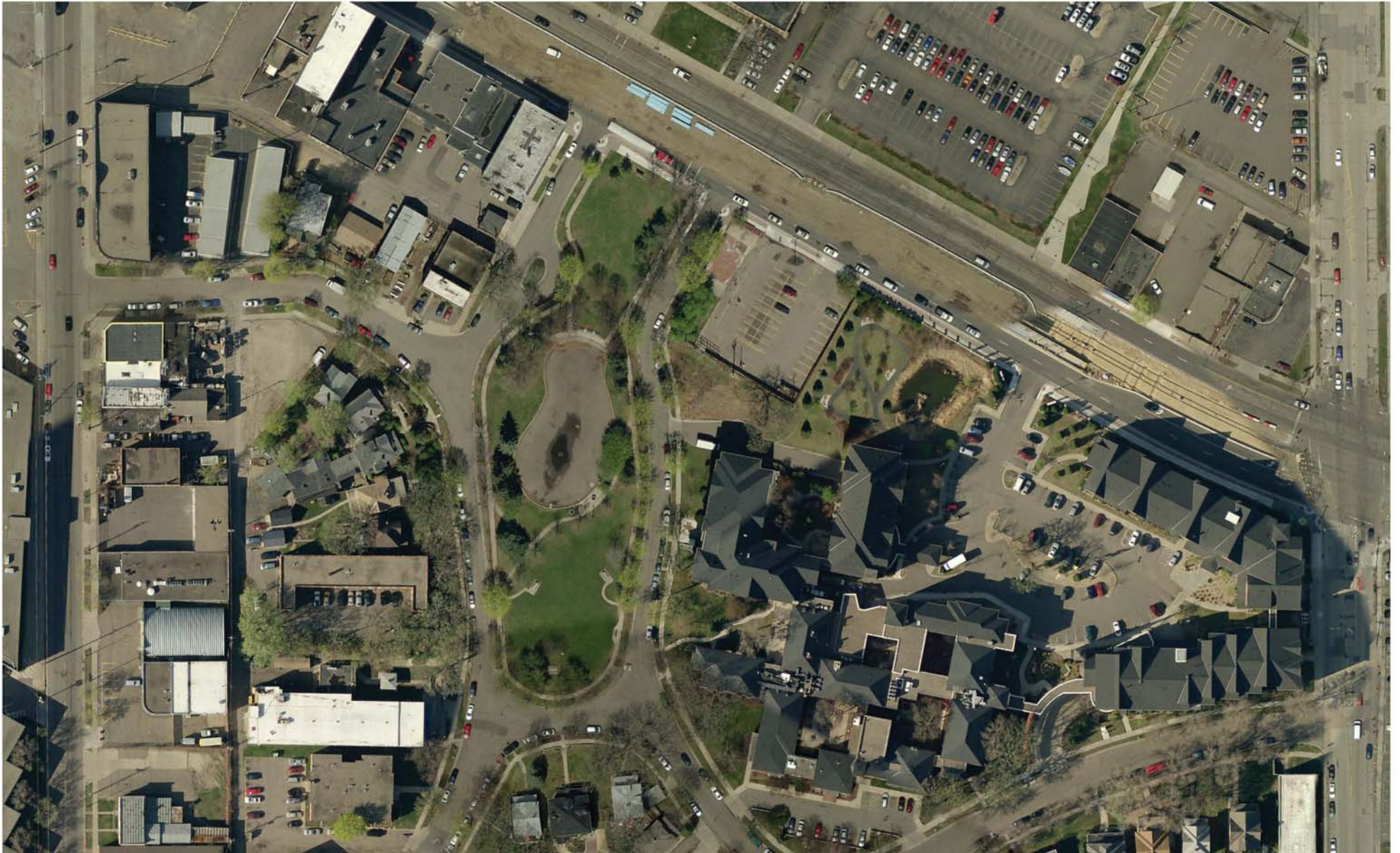
Iris Park Improvements



1985

Design Advisory Committee Meeting #1
November 6, 2013

Iris Park Improvements



Design Advisory Committee Meeting #1
November 6, 2013

Iris Park Improvements

Saint Paul Parks and Recreation

Fairview is one station area along the Avenue where existing and planned public spaces can be found directly along the University Avenue frontage.

Iris Park demonstrates the potential for public spaces to offer a “front door” to the street but also provide important green relief along the Avenue. Dickerman Park holds tremendous potential - if realized as a public park space - to revitalize and distinguish this segment of the Avenue. These two spaces symbolize the potential for public spaces to play a defining role for Fairview Station. They also highlight the role green space could offer in reinforcing the Avenue as the gathering point between a working and living environment - both of which are key in transit-supportive communities.



FIGURE 3.1 - The **Public Realm Plan** identified here illustrates one possible configuration of an improved network of open spaces and pedestrian routes.

Bike Walk Central Corridor Action Plan

AN IMPLEMENTATION PLAN OF THE CENTRAL CORRIDOR DEVELOPMENT STRATEGY AND STATION AREA PLANS



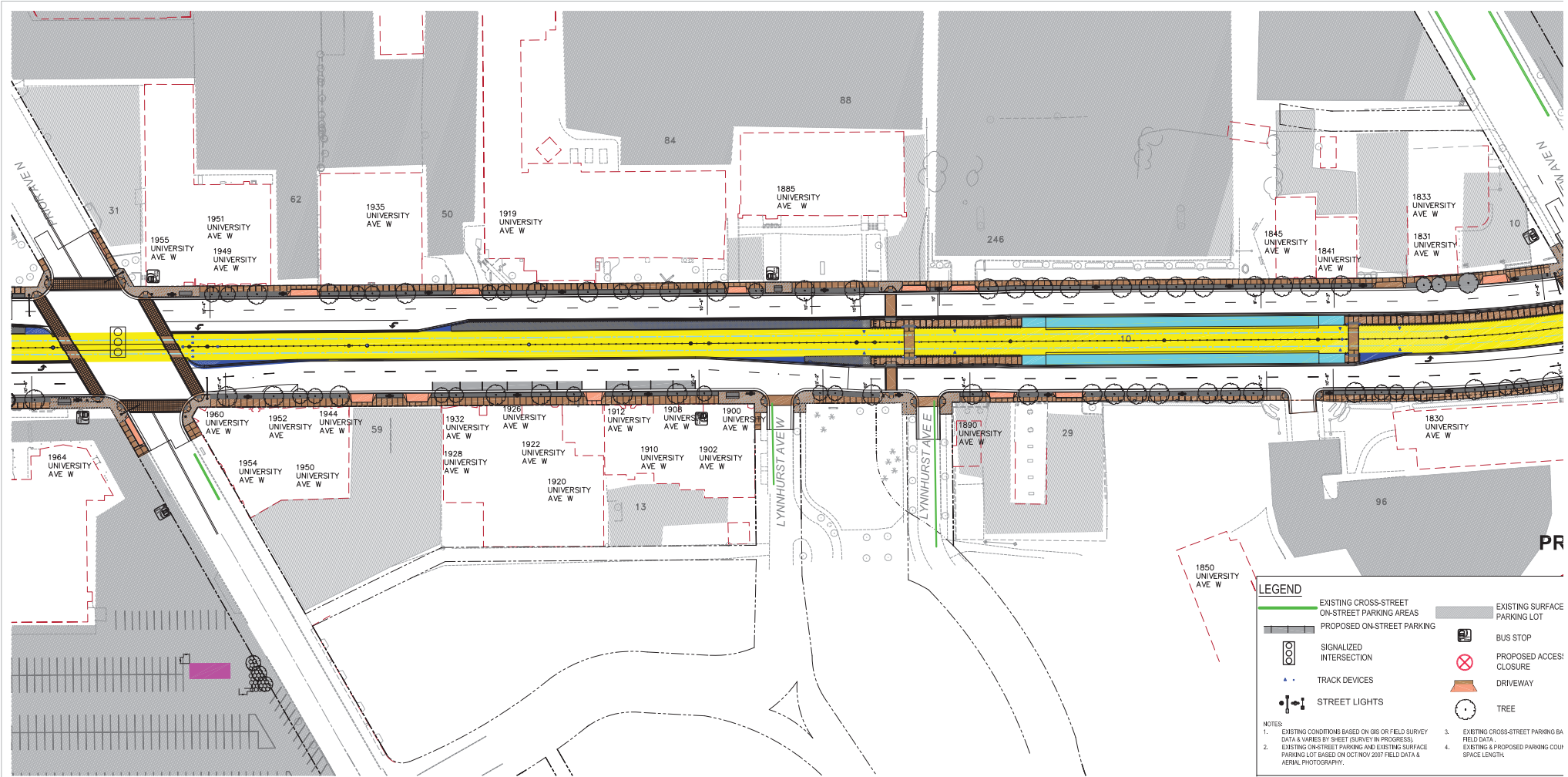
Adopted May 5, 2010

Hoisinaton Koealer Group, Inc. 

Design Advisory Committee Meeting #1
November 6, 2013

Iris Park Improvements

 Saint Paul Parks and Recreation



CCLRT STATION LOCATIONS
FAIRVIEW
JUNE 1, 2010

Central Corridor
Light Rail Transit

Iris Park Improvements

Design Advisory Committee Meeting #1
November 6, 2013

Saint Paul Parks and Recreation

VISIBILITY

- LACKS OVERALL IDENTITY
- LACKS VISIBILITY FROM UNIVERSITY AVENUE
- VIEWS BLOCKED BETWEEN UNIVERSITY AVENUE AND POND
- LIMITED LIGHTING WITHIN THE PARK

ACCESS/CONNECTIONS

- STATION PLATFORM
- EPISCOPAL HOMES
- COFFEE SHOP
- BIKE/WALK PLAN
- ACCESS TO THE POND IS LIMITED TO THE SOUTH END

GATHERING AREAS

- LIMITED SPACE FOR SMALL GROUPS TO GATHER
- SCATTERED PICNIC TABLES
- FOCAL POINT IS FOUNTAIN AND THERE IS LIMITED SEATING

ACTIVITIES

- WALKING
- LUNCH BREAKS
- READING
- WATCHING THE DUCKS
- FEEDING THE DUCKS
- PASSING THROUGH

EXISTING FURNISHINGS

- PERIMETER LIGHTING
- BENCHES
- PICNIC TABLES
- FLOWERING, DECIDUOUS AND EVERGREEN TREES



VISION

THE NORTH END OF THE PARK WILL BE A VISIBLE AND WELCOMING ENTRANCE TO THE PARK FROM ALL DIRECTIONS WITH AMENITIES THAT PROVIDE COMFORT AND ENHANCEMENTS THAT WILL ACTIVATE THE PARK

SITE ANALYSIS

Design Advisory Committee Meeting #1
November 6, 2013

Iris Park Improvements



Design Advisory Committee Meeting #1
November 6, 2013

Iris Park Improvements

Saint Paul Parks and Recreation

CONSIDER INTERNAL AND EXTERNAL ACCESS AND CIRCULATION



OPEN UP VIEWS THROUGH PARK



INCREASE VISIBILITY OF PARK FROM UNIVERSITY



ENHANCED CONNECTIONS



ENHANCED BICYCLE LANES/SHARE THE ROAD/TRAFFIC CALMING



ACCESS/CIRCULATION

Design Advisory Committee Meeting #1
November 6, 2013

Iris Park Improvements



PROVIDE AMENITIES FOR ENHANCED AND GATHERING AREAS



GATHERING AREAS

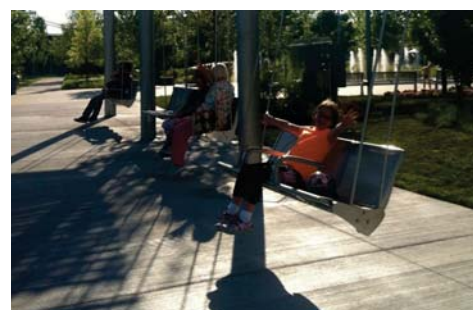
Design Advisory Committee Meeting #1
November 6, 2013

Iris Park Improvements

Saint Paul Parks and Recreation



ACTIVATE THE PARK



ACTIVITIES

Design Advisory Committee Meeting #1
November 6, 2013

Iris Park Improvements

Saint Paul Parks and Recreation



FURNISHINGS

Design Advisory Committee Meeting #1
November 6, 2013

Iris Park Improvements



traditional



classic



whimsical



modern

style



waiting area



entry monument



beacon



gates

gateway

PARK IDENTITY

Design Advisory Committee Meeting #1
November 6, 2013

Iris Park Improvements

discussion



identity
uses
amenities
concerns
other

next steps



Iris Park Improvements

Design Advisory Committee Meeting #1
November 6, 2013

Saint Paul Parks and Recreation