

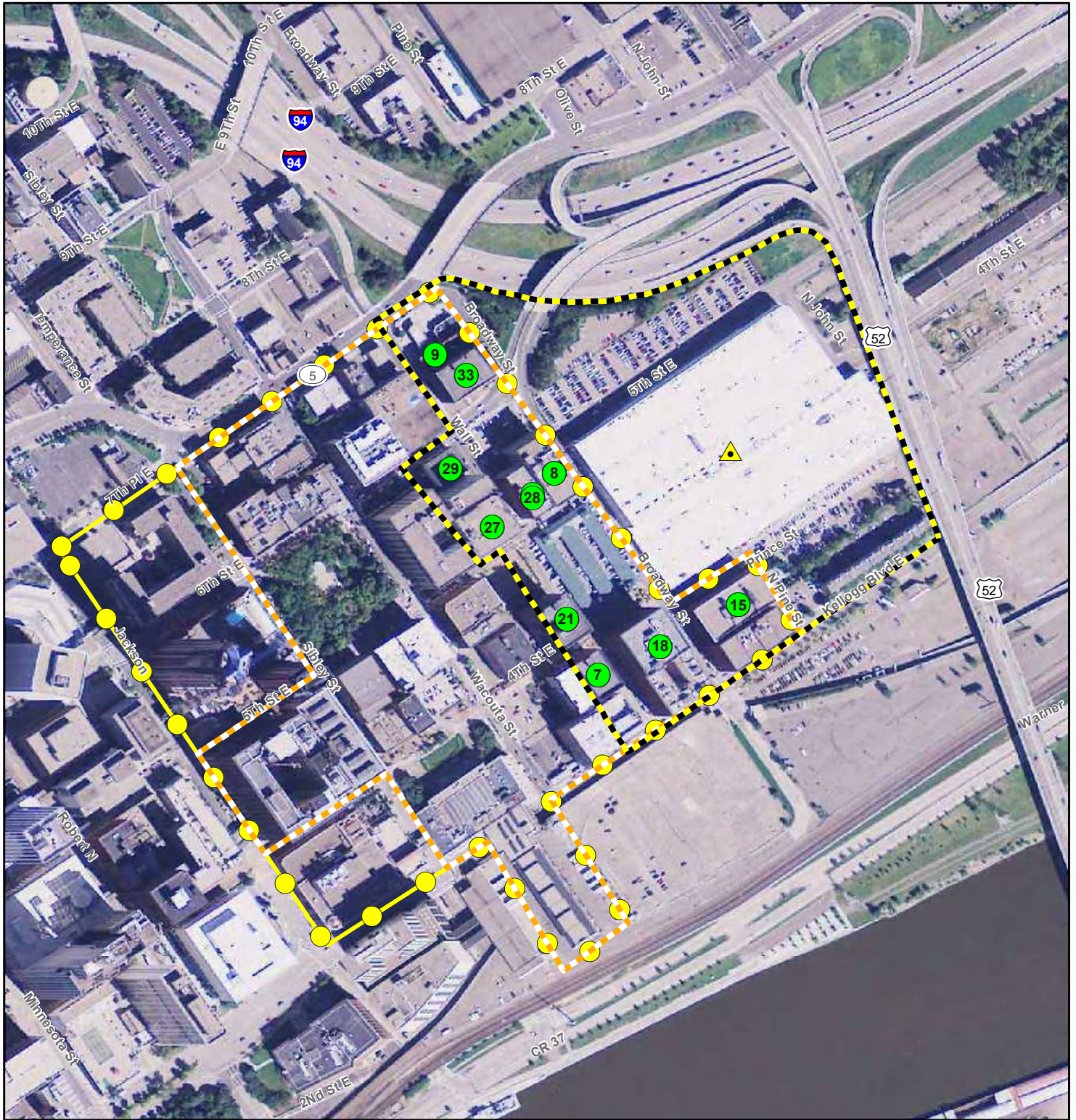


**Figure 7. Partial foundation wall, facing northeast**



**Figure 8. Southern face of the foundation wall, facing northwest**





Map adapted from USDA FSA NAIP Orthophoto, 2010; Ramsey County, Minnesota.

#### Legend

- Diamond Products Building Location
- APE for Indirect Effects
- Lowertown Historic District Property
- Lowertown Historic District NRHP-Listed
- Lowertown Heritage Preservation District



0 400 Feet  
1 inch = 400 feet



## VISUAL ASSESSMENT RESULTS - ARCHITECTURAL HISTORY

Diamond Products Site Assessment  
St. Paul, Ramsey County, Minnesota



### Figure 9

File: Fig9\_A-HSurveyResults  
Summit Proj. No.: 1686-0002  
Plot Date: 06-10-11  
Arc Operator: THV  
Reviewed by: RLH





**Figure 10. View of Diamond Products Building from St. Paul Rubber Company, facing north.**



**Figure 11. View of Diamond Products Building from Northern Pacific Railway Warehouse, facing north.**