

VISION

The north end of Iris Park will serve as welcoming gateway from University Avenue into this quiet green oasis. Enhancements will contribute to the attractiveness and usefulness of the park with an emphasis on:

- increased visibility and identity for the park
- improving accessibility
- fostering desired activities

amenity nature active
gathering rest-stop connected social
benches destination beautiful functional cared-for unique
green kid-friendly accessible oasis
welcoming lush peaceful
serene quaint drunk-free scenic accommodating place innovative retreat
friendly clean colorful vibrant children
diverse playful safe
picnics

TRANSITIONAL STYLE

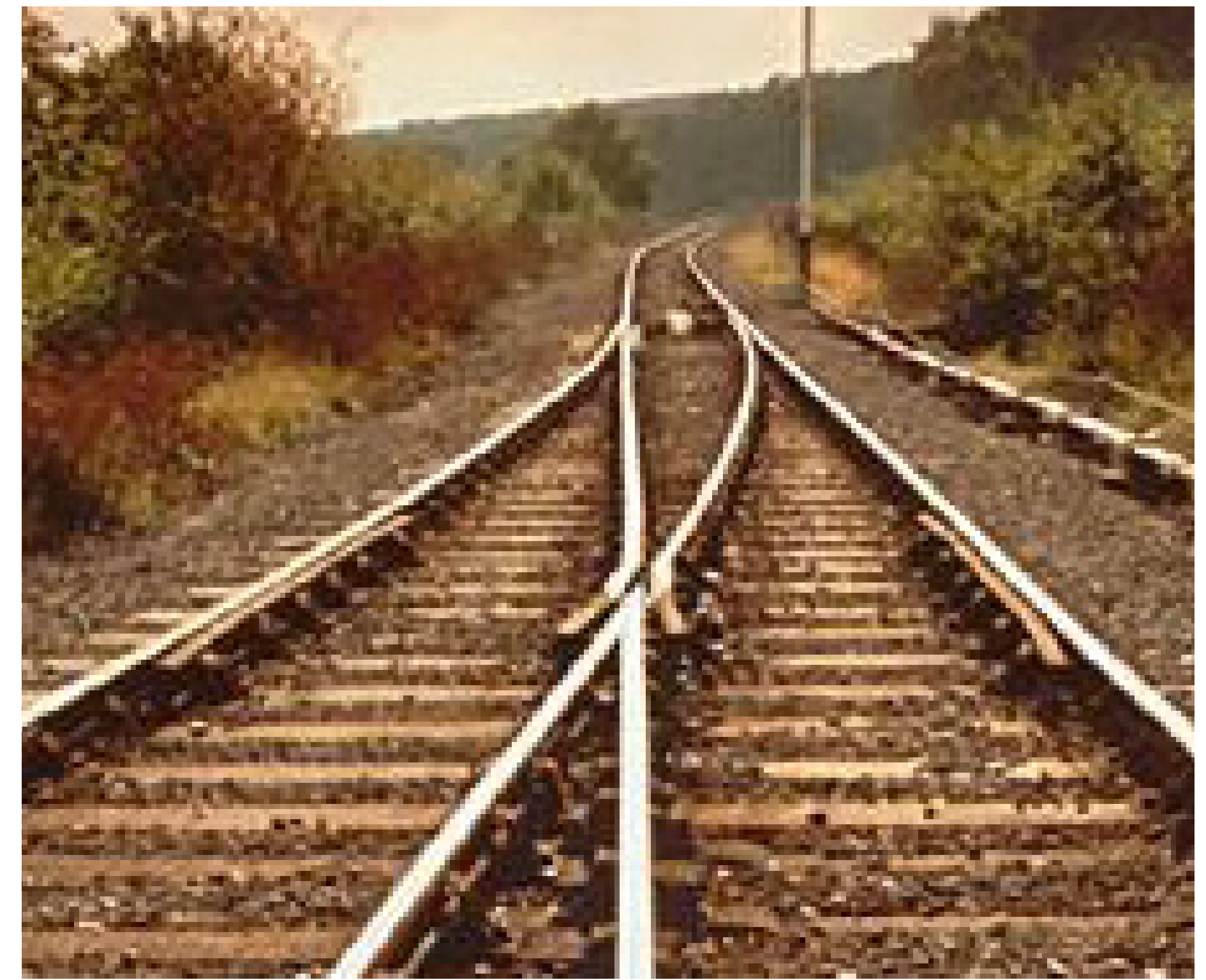
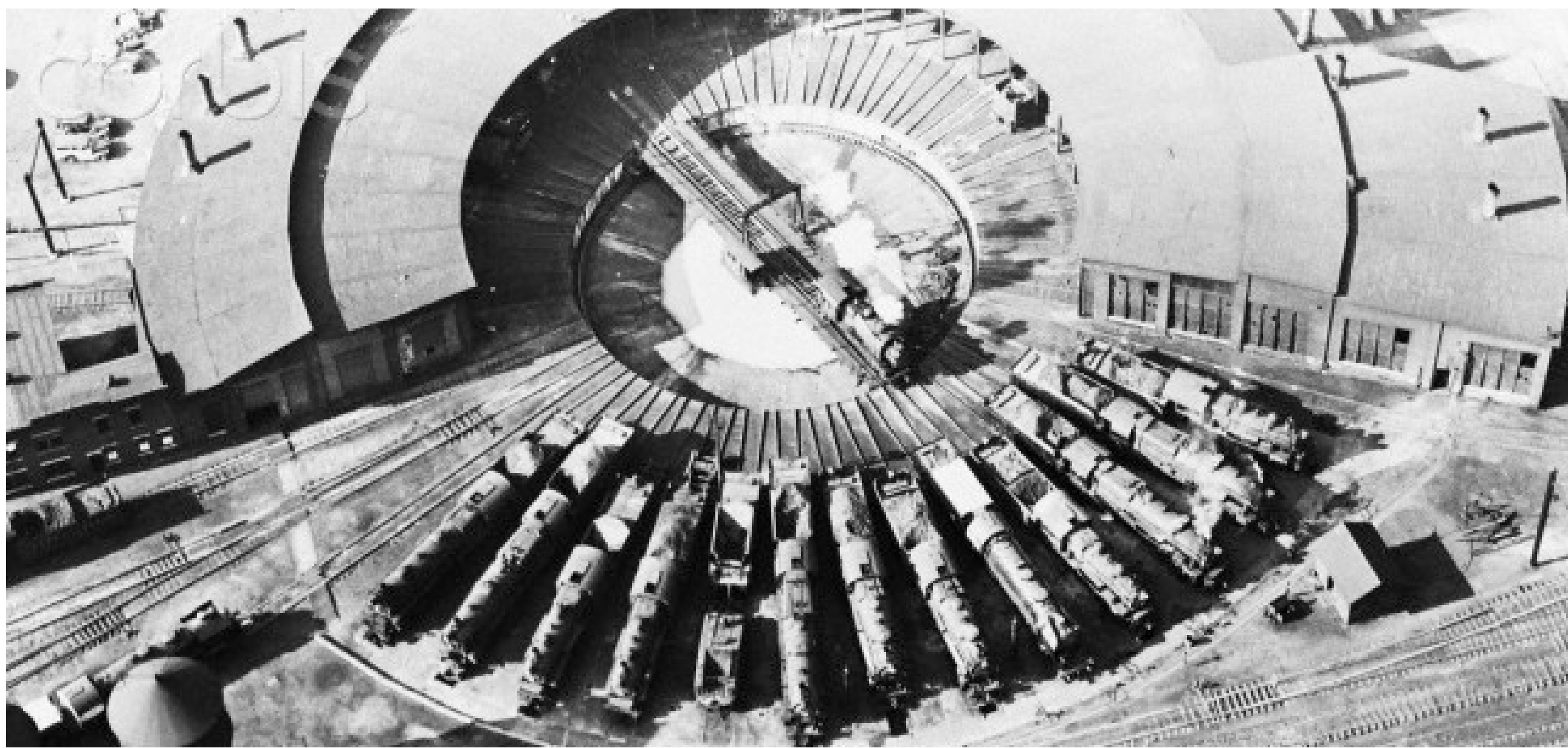


STREAMLINED FORMS
TRADITIONAL WARM MATERIALS
WOOD and STONE and COLORED CONCRETE

DESIGN STYLE

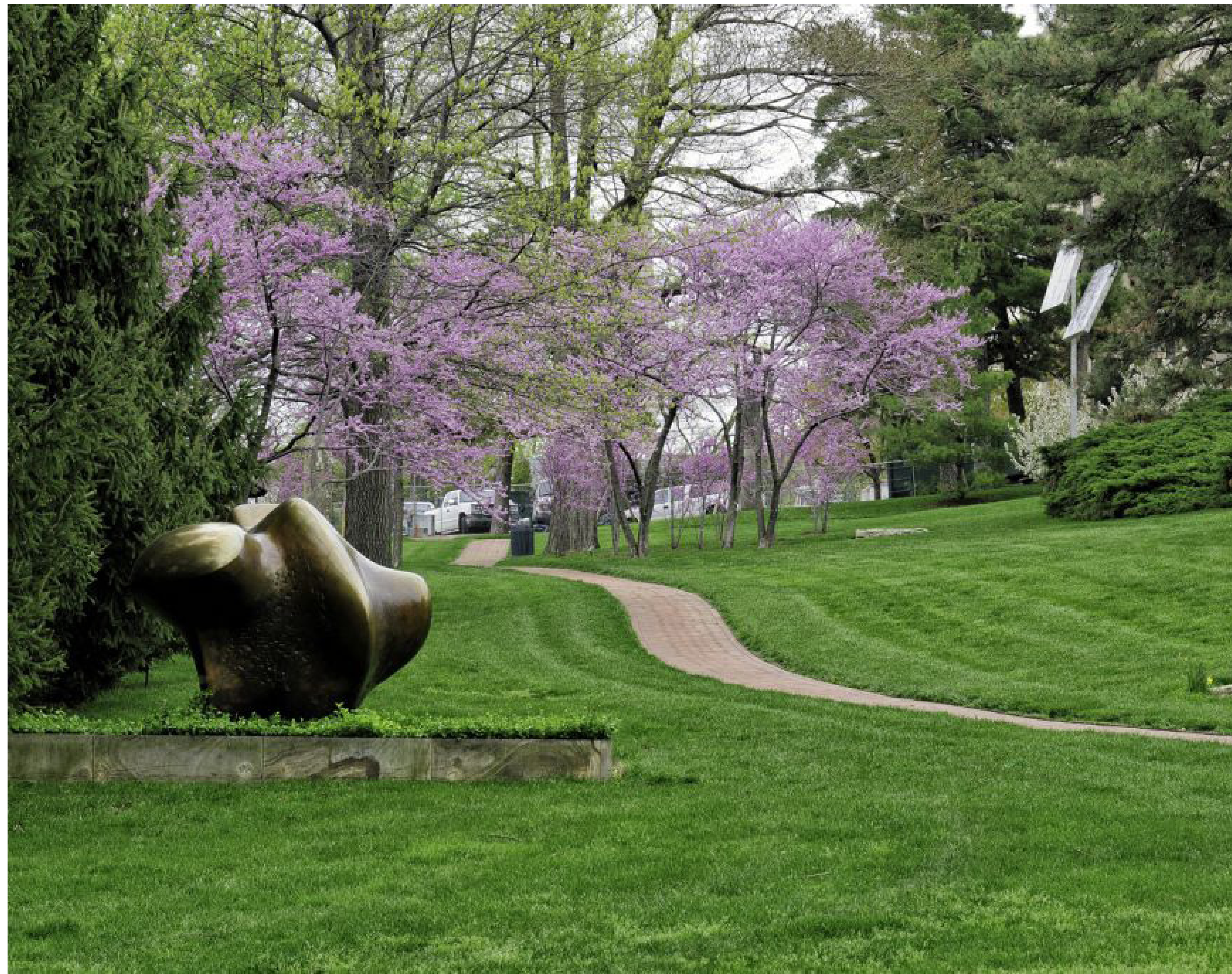
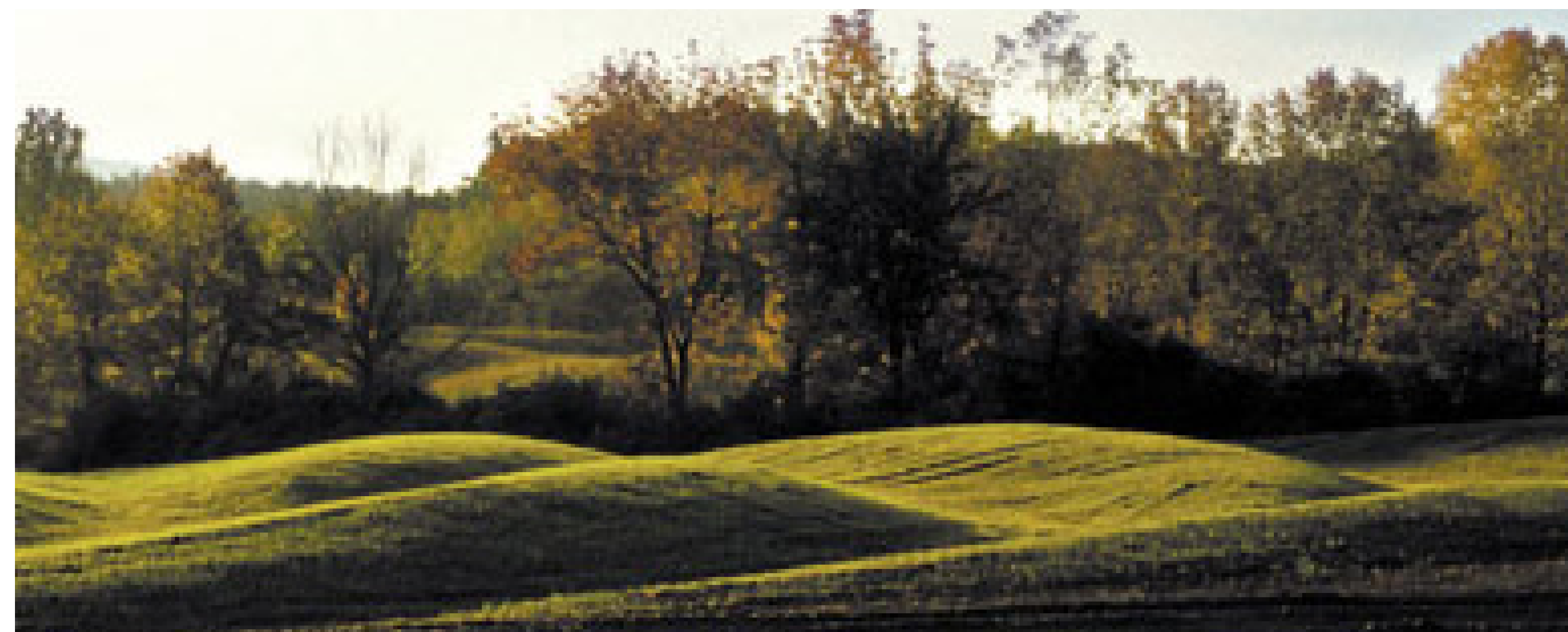
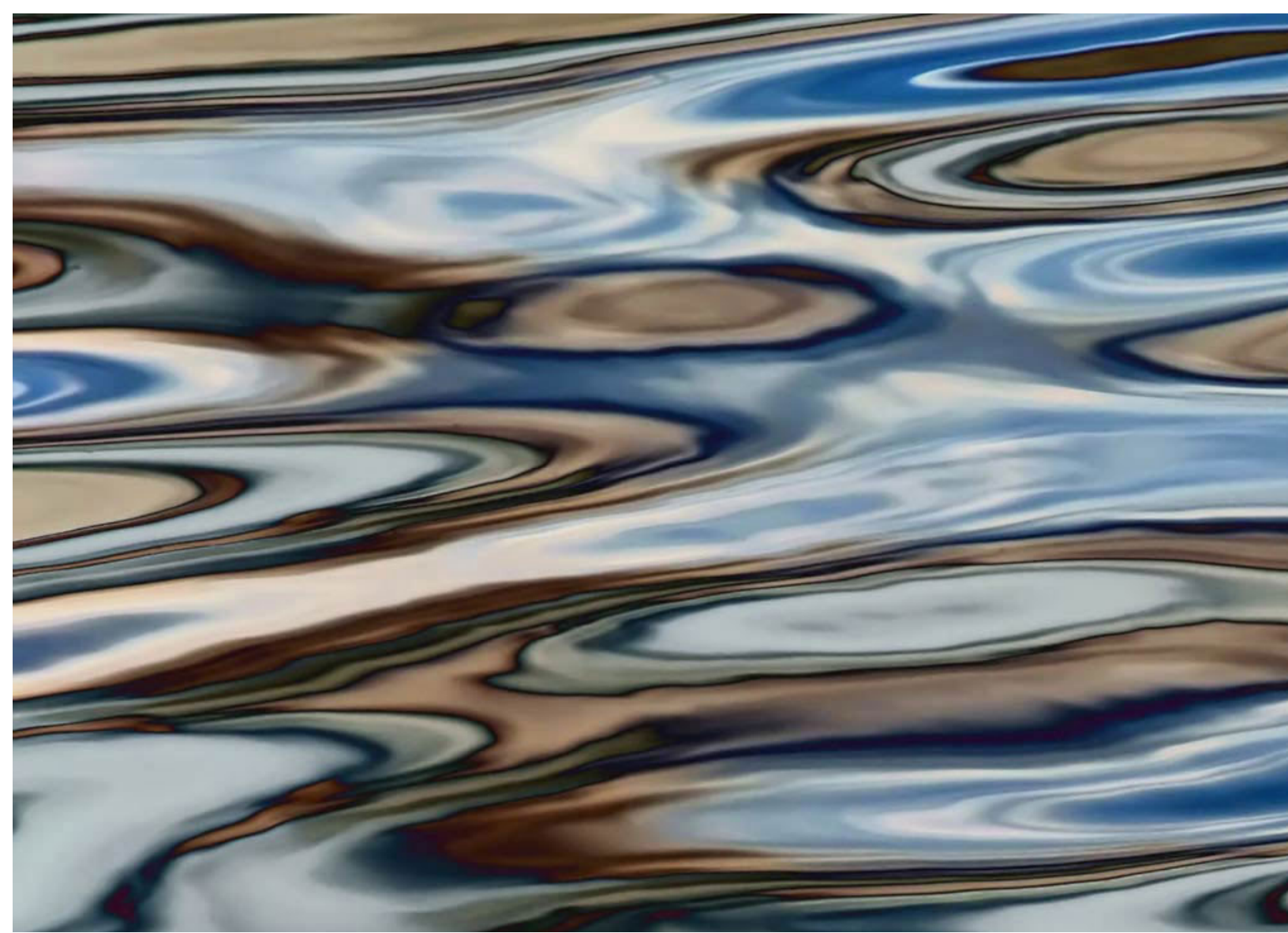
Design Advisory Committee Meeting #2
January 15, 2014

Iris Park Improvements



- Railroad Whimsy
- Trolley parks built in the late 1800s and early 1900s by trolley companies to draw business on the weekends
- World's Fair concept of fixed amusement park 1851 – celebration of the industrial achievements of the nations of the world – designed to educate and entertain





- Historical: Neighborhood shaped around former Lake Iris
- Natural draw of people to water – pulls people in –unites us
- Undulating, crashing, merging, shaping
- Ripple effect – gradually expanding influence or effect making positive change in the community – this is our first park improvement along the green line – use it as a demonstration in making University more people and pedestrian friendly – improving economic, social and environmental conditions

Legend

- PERGOLA
- WATER FEATURE
- PLAZA
- SEATWALL
- OPEN TURF AREA
- WATER RUNNEL
- CONCRETE WALK
- PERGOLA



CONCEPTUAL PLAN B
Design Advisory Committee Meeting #2
January 15, 2014

Iris Park Improvements

discussion



- Style
- Materials
- Circulation
- Spaces