

# welcome

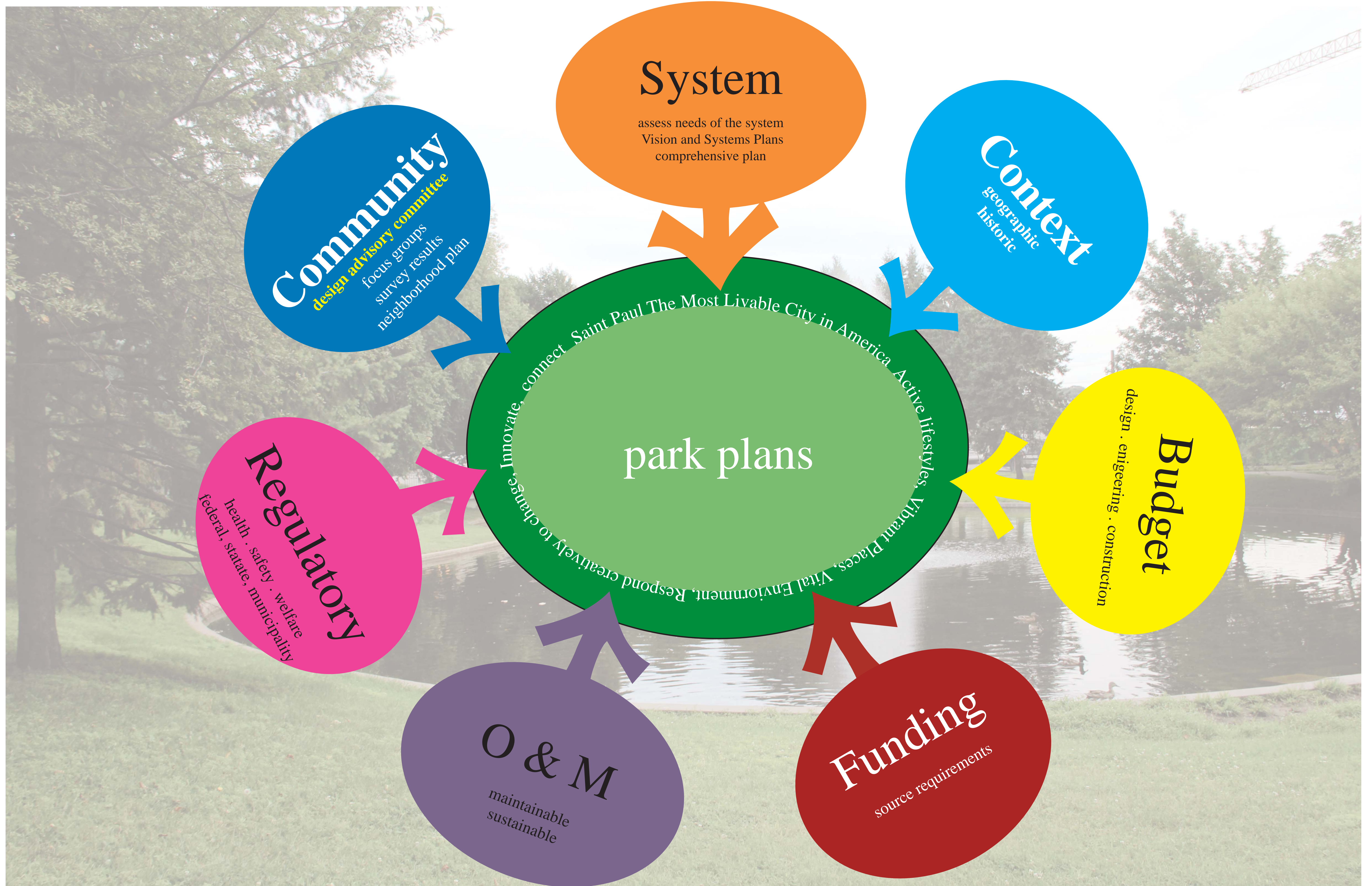


Open House  
January 29, 2014

## Iris Park Improvements

Saint Paul Parks and Recreation





## DESIGN CONSIDERATONS

Open House  
January 29, 2014

# Iris Park Improvements



november  
2013

january  
2014

january  
2014

february - april  
2014

may - december  
2014

phase

phase  
considerations

## Community Meeting #1

### project kickoff

- community advisory group
- review suvey
- site analysis and observations

## Community meeting #2

### concept review

- concept level design
- get direction for final concept

## Open House

- present final concept
- gather feedback
- present schedule

## Design Development

### finalize details

- materials
- layout
- cost estimate
- construction documents

## Construction Project

### make it happen

- permitting
- bidding
- hire contractor
- manage construction

community

context

system

budget

funding

regulatory

operations and maintenance

## TIMELINE

Open House  
January 29, 2014

# Iris Park Improvements



## LCDA - TOD GRANT REQUIREMENTS

- ENHANCEMENT OF HIGH DENSITY MIXED USE DEVELOPMENT AMENITIES ADJACENT TO TRANSIT STATIONS USING PEDESTRIAN FRIENDLY DESIGN STANDARDS
- 170 SENIOR RENTAL HOUSING UNITS
- ACQUISITION OF 1890 UNIVERSITY
- CONNECTION IMPROVEMENTS TO EAST LYNNHURST
- IMPROVEMENTS TO IRIS PARK

### LEGEND

- PARK BOUNDARY
- APPROX. PROJECT AREA
- PUBLIC WORKS CONSIDERATIONS FOR STREET CHANGES
- ROADWORK WITHIN PARK BOUNDARY
- EPISCOPAL HOMES DEVELOPMENT

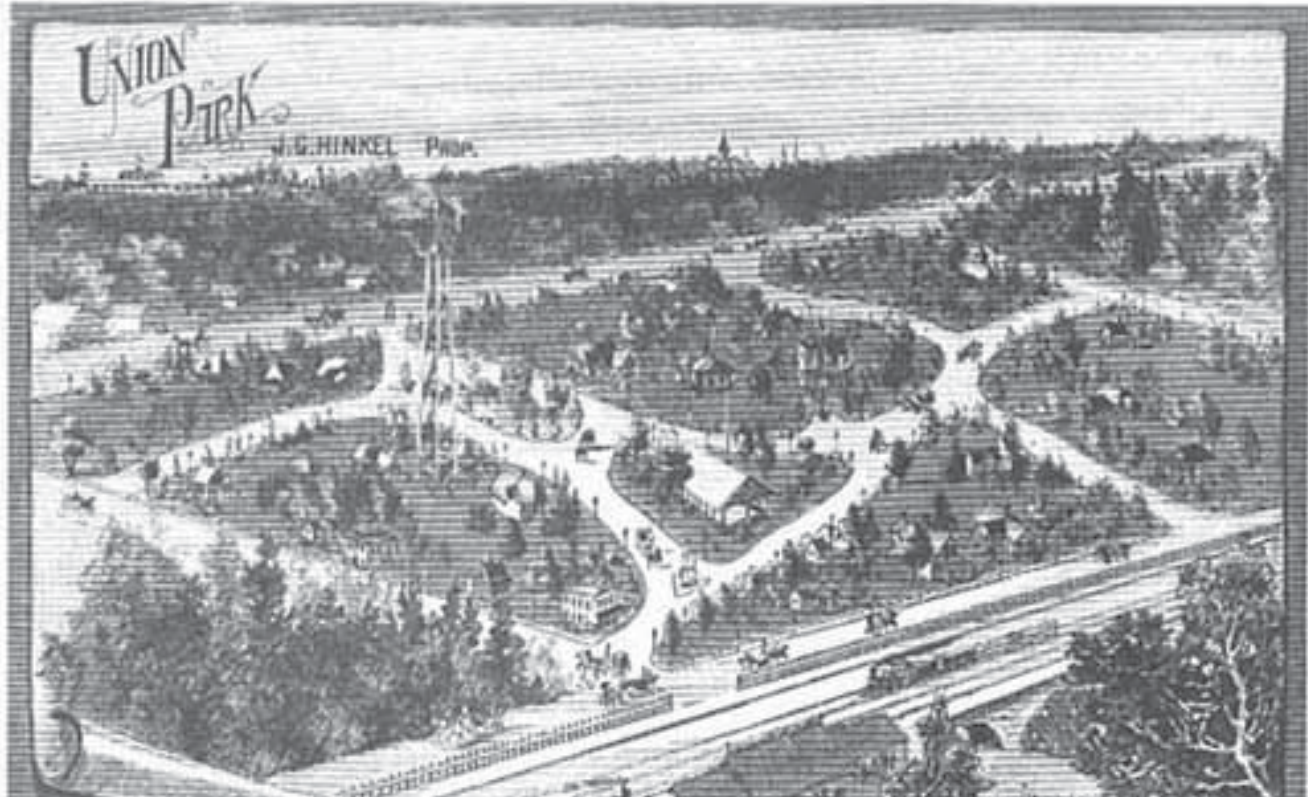


**CONTEXT**  
Open House  
January 29, 2014

# Iris Park Improvements



# history



1880s

## Iris Park

- University Avenue major connector for Minneapolis and Saint Paul dating back to a foot path and then horse trail, Old Military Road, Red River Ox Cart Trail.
- Union Park was the amusement destination on the Short Line with a dance pavilion, refreshment stands, merry go round, bowling alley and
- Prior and Univeristy major transfer point for all rail lines
- Real Estate developers subdivided land in the late 1800s including St. Anthony Park, Merriam Park, Tangletown near Macalester and Iris Park into “suburb” - commuter suburb known for windy layouts marketing the natural beauty
- Development was shaped by the street car system with rail stops developing into destinations for shopping, dining and entertainment.
- Lake Iris was a natural pond reshaped over time with the diversion of water from it
- 1982 a gathering plaza with tables and planters was added along with changes to the pond
- most recent changes to the park were made in 2000 with the removal of a gathering area in the center of the park due to complaints about unwanted behavior



1892



1900



1915

## CONTEXT

Open House  
January 29, 2014

# Iris Park Improvements



# site analysis

## VISIBILITY

- LACKS OVERALL IDENTITY
- LACKS VISIBILITY FROM UNIVERISTY AVENUE
- VIEWS BLOCKED BETWEEN UNIVERSITY AVENUE AND POND
- LIMITED LIGHTING WITHIN THE PARK

## ACCESS/CONNECTIONS

- STATION PLATFORM
- EPISCOPAL HOMES
- COFFEE SHOP
- BIKE/WALK PLAN
- ACCESS TO THE POND IS LIMITED TO THE SOUTH END

## GATHERING AREAS

- LIMITED SPACE FOR SMALL GROUPS TO GATHER
- SCATTERED PICNIC TABLES
- FOCAL POINT IS FOUNTAIN AND THERE IS LIMITED SEATING

## ACTIVITIES

- WALKING
- LUNCH BREAKS
- READING
- WATCHING THE DUCKS
- FEEDING THE DUCKS
- PASSING THROUGH

## EXISTING FURNISHINGS

- PERIMETER LIGHTING
- BENCHES
- PICNIC TABLES
- FLOWERING, DECIDIOUS AND EVERGREEN TREES









desired outcome





The north end of Iris Park will serve as a welcoming gateway from University Avenue into this green oasis. Enhancements will contribute to the attractiveness and usefulness of the park with an emphasis on:

- increased visibility and identity for the park
- improving accessibility
- fostering desired activities



## shape of the park

eliminate turn around on west side of park to allow more room for park



## north of fountain

re-paint railings and clean up wall at fountain. expand seating area and replace furnishings and provide lighting for fountain, along paths and through park



## trees and turf

maintain healthy trees and trim to open views. provide irrigation to keep turf on north end of park healthy.



locate new trees and plantings to maintain open views and also add seasonal interest and wildlife value

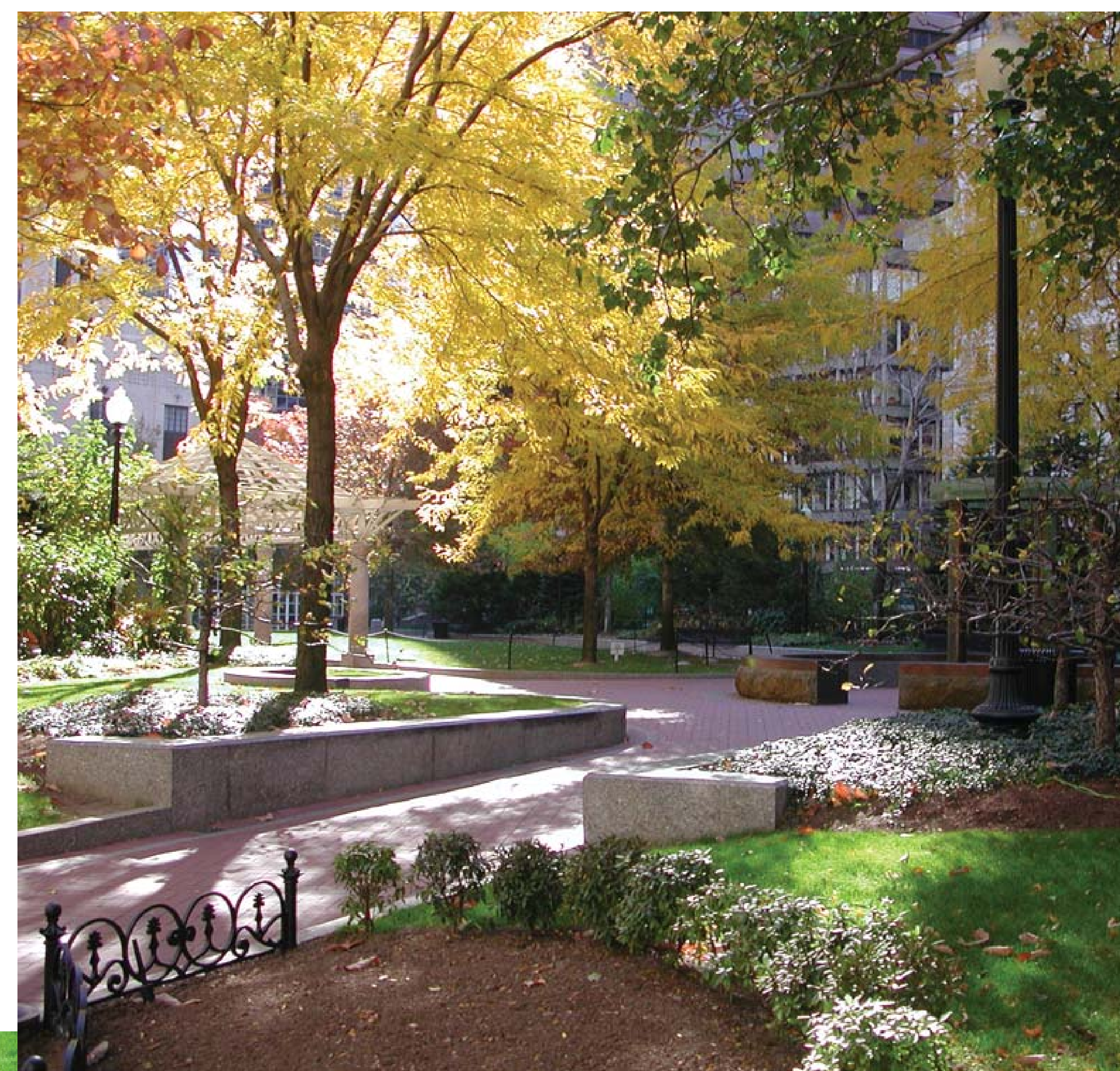
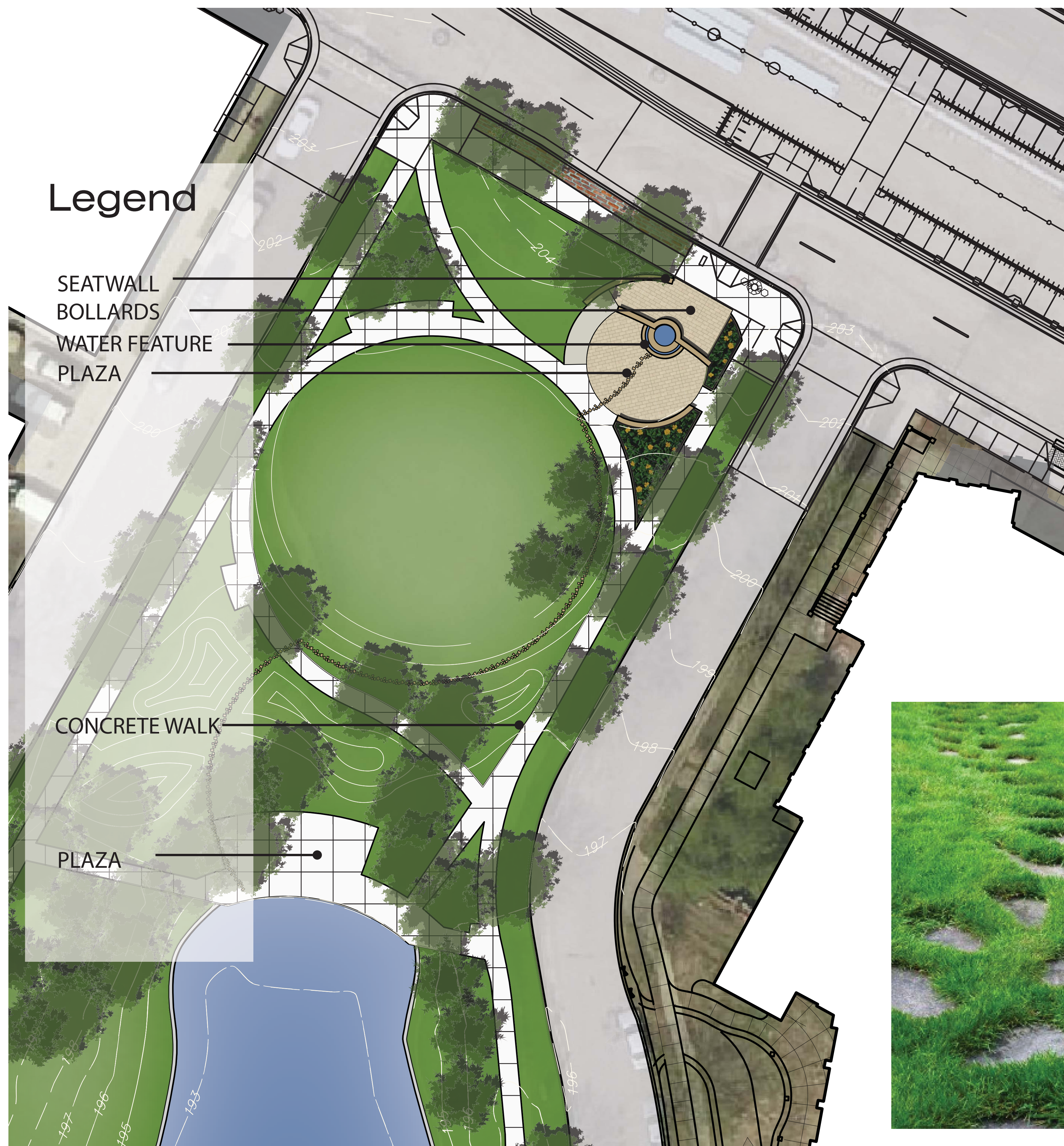


## EXISTING ASSETS

Open House  
January 29, 2014

# Iris Park Improvements





**PLAN**  
Open House  
January 29, 2014

# Iris Park Improvements



**structure**  
streamlined forms using  
traditional warm materials



**seating**  
ample locations for short term seating  
preventions for skate boarding and vandalism



**water feature**  
sound of water at plaza will  
buffer noise from University



**paving**  
vary color and texture





overall plan from northwest corner





plaza at university and e. lynn timer

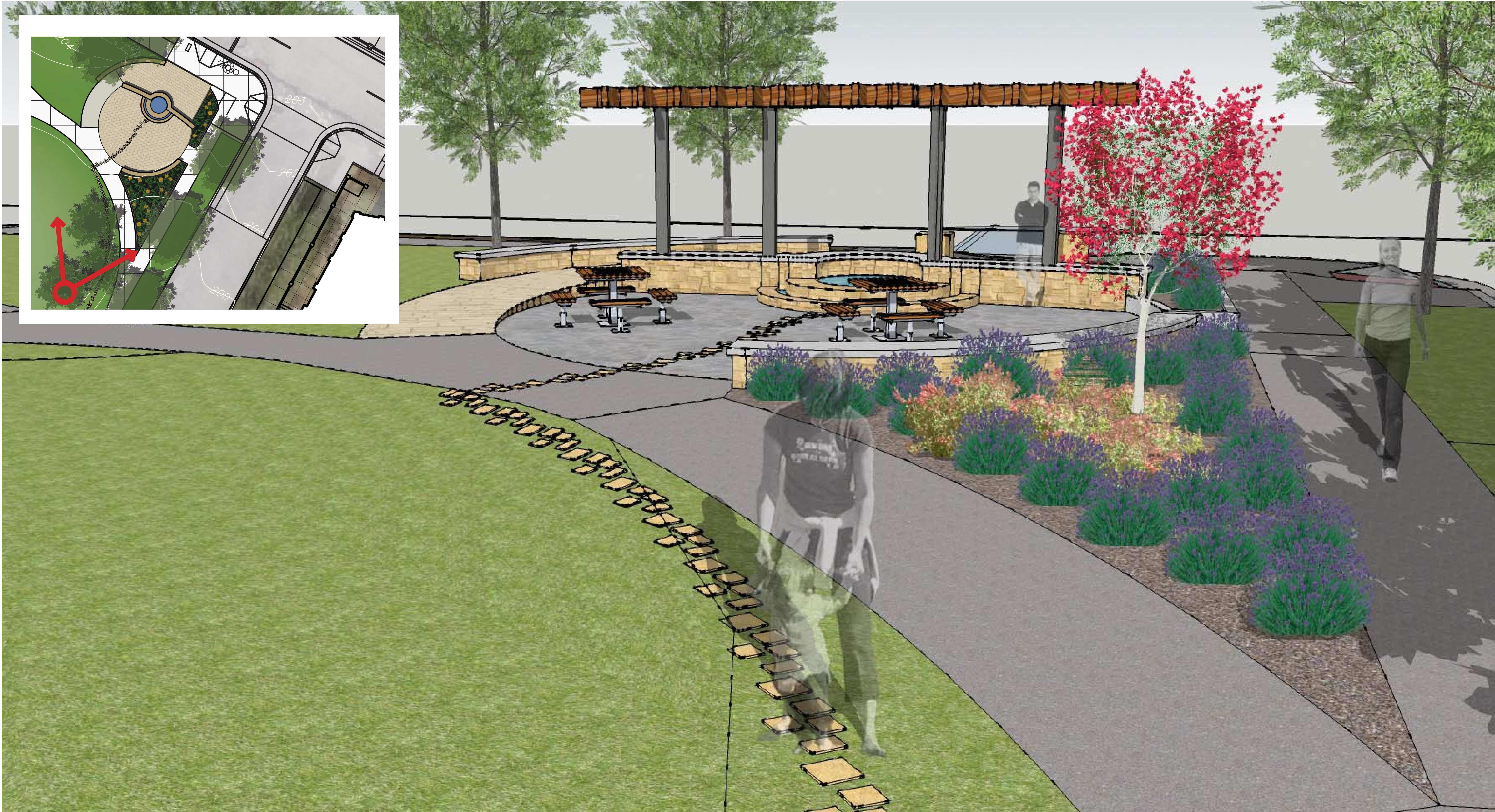


**PERSPECTIVES**  
Open House  
January 29, 2014

# Iris Park Improvements



plaza at university and e. lynn timer



**PERSPECTIVES**  
Open House  
January 29, 2014

# Iris Park Improvements



plaza at north end of pond





plaza at north end of pond

