



CITY OF SAINT PAUL
Mayor Christopher B. Coleman

400 City Hall Annex
25 West 4th Street
Saint Paul, Minnesota 55102
www.stpaul.gov/parks

Telephone: 651-266-6400
Facsimile: 651-292-7311

Oct 24, 2014

“Palace Community Center”
Design Advisory Committee #2 (October 22, 2014)
Meeting Notes

Attendees: Ian Simonson, Joe Buzicky, Betty Moran, Kathleen Anglo, Cathy Miller, Mary Morgan, Jennifer Anderson-Tuttle, Maggie O’Reilly, Valerie Peterson, Kathy Korum, Andy Rodriguez, Chris Stark, Gwen Peterson

1. Welcome and Introductions

- 1.1.** Reviewed the goals/hopes for the Palace Renovation/Expansion heard in Meeting #1
- 1.2.** Current phase of project is Design Development (DD) –refining the plans, studying details and appropriate materials

2. Building Design Progress (Jennifer)

Site Plan, Building Plan, Storage Diagram, Proposed Demo Drawings, Exterior Perspectives and Interior Precedent Images Reviewed

- 2.1.** Are concessions open to the outside?
 - 2.1.1.** Due to energy concerns, security, maintenance, and the nearby interior concessions window, there is not a concessions window to the outside
 - 2.1.2.** The Kitchen will be open when the building is open.
- 2.2.** 1500 Square feet of total storage (personal and community center)
- 2.3.** Materials have a residential feel in scale and color
- 2.4.** Re-face gym exterior with added insulation
- 2.5.** Mechanical units on roof will be screened
- 2.6.** Relocated warming room restroom to be accessed off of the north vestibule
- 2.7.** Where are the drinking fountains located?
 - 2.7.1.** Outside of the gym near the large restrooms
 - 2.7.2.** A drinking fountain in the fitness room would be valued
 - 2.7.3.** There is an exterior drinking fountain outside of the kitchen
- 2.8.** Interior aesthetic is durable, yet warm and has natural light.
- 2.9.** Where will flyers go?
 - 2.9.1.** There is markerboard/tackboard planned for the interior commons
 - 2.9.2.** They could also be placed in the vestibule
- 2.10.** Kitchen Design
 - 2.10.1.** Commercial grade kitchen is still to be laid out when Parks notifies LSE of the requirements
 - 2.10.2.** Is there a dishwasher?



Palace Community Center

Expansion & Renovation
Design Advisory Committee

Meeting #2
October 22nd, 2014

Agenda

- I. Welcome
- II. Building Design Direction
- III. Site Design Overview
- IV. Questions and Discussion

Project Manager:
Chris Stark, AIA, LEED AP
400 City Hall Annex, 25 West 4th St., Saint Paul, MN 55102
Christopher.stark@ci.stpaul.mn.us
651-266-6419



Meeting #1 Review

Goals/Hopes for Palace

- Welcoming
- Bright
- Improved Image
- Improved Safety
- Multi-Generational
- Family Oriented
- Positive for the Community



Palace Softball Team, Date Unknown

Project Process & Schedule

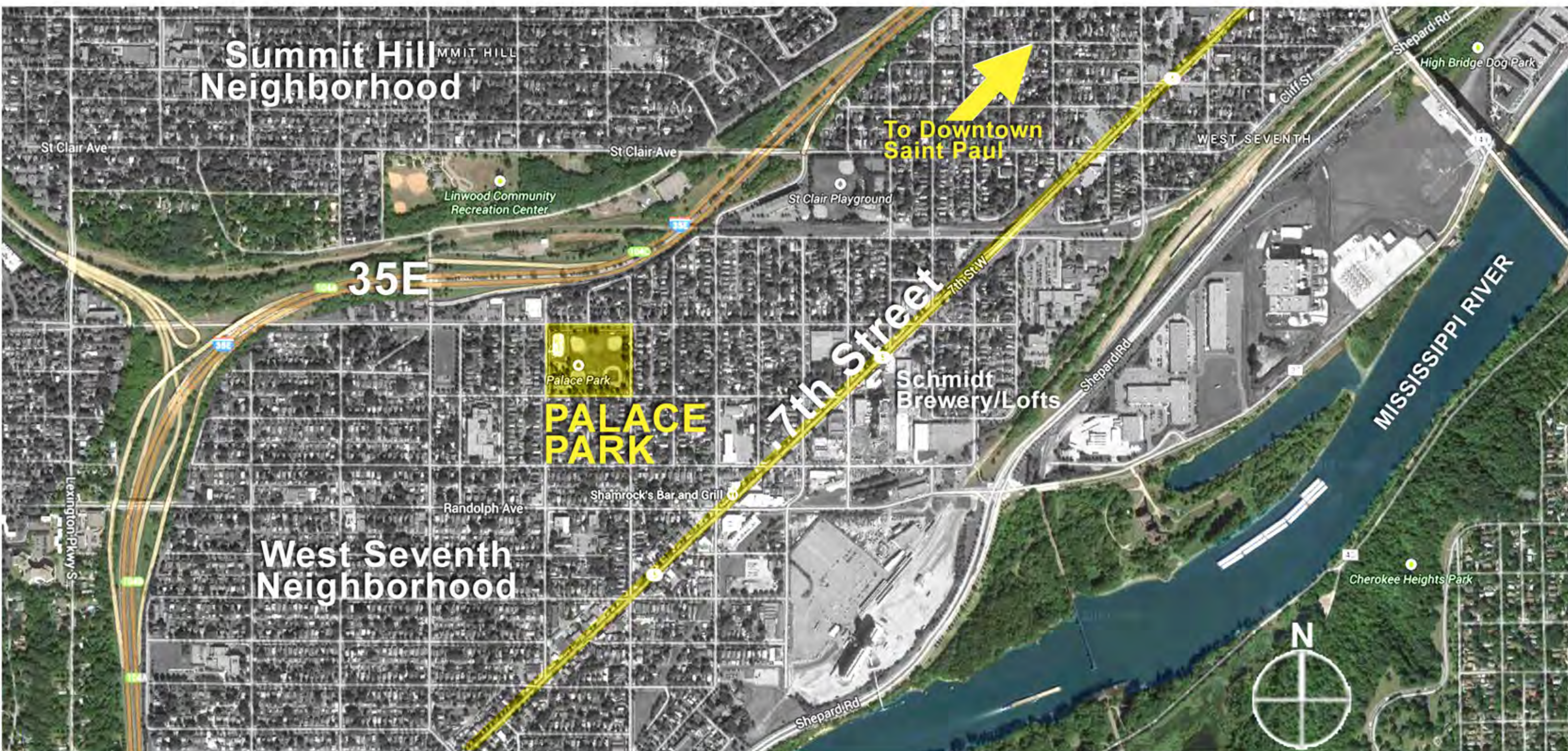


Community Process Date

Design Advisory Committee #1	09/30/14
Design Advisory Committee #2	10/22/14
Design Open House #1	10/28/14
Design Advisory Committee #3	12/02/14
Design Open House #2	01/13/15

Design Process (Draft) Date

Schematic Design	09/30/14
Design Development	11/09/14
Construction Documents	01/13/14
Construction Begins	2015



Palace Community Center

Saint Paul, Minnesota

Site
Location





Palace Community Center

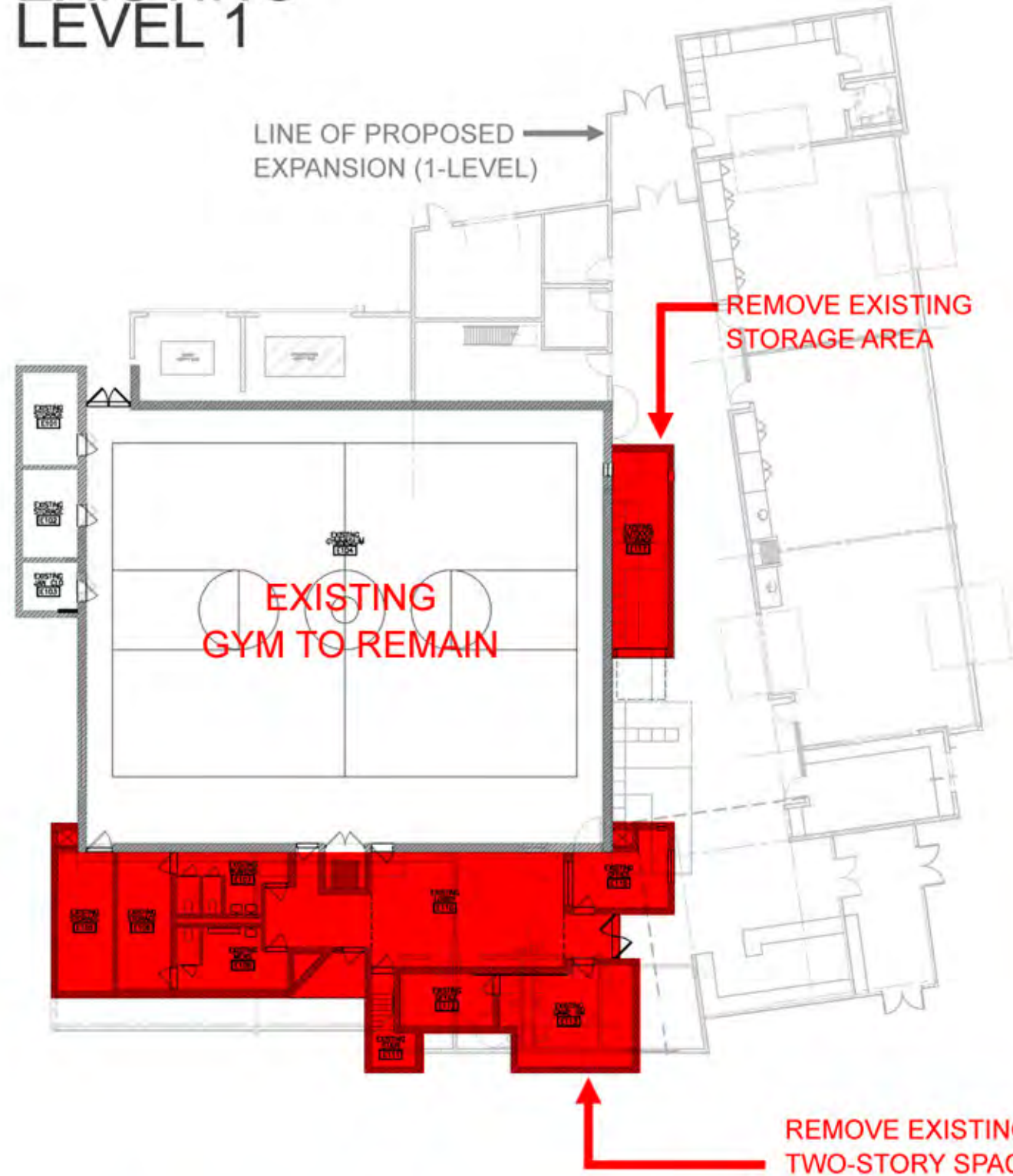
Saint Paul, Minnesota

Existing
Site



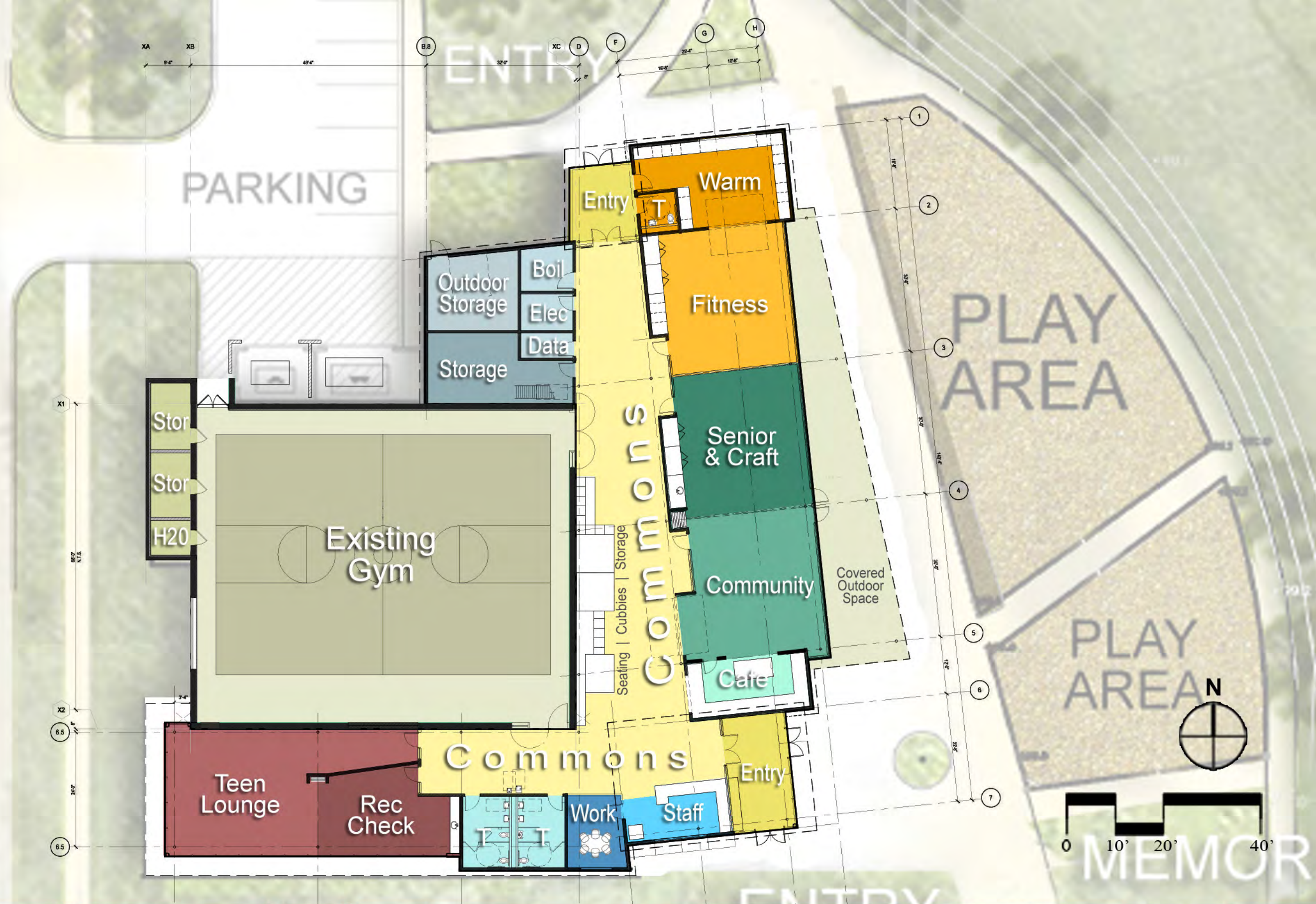


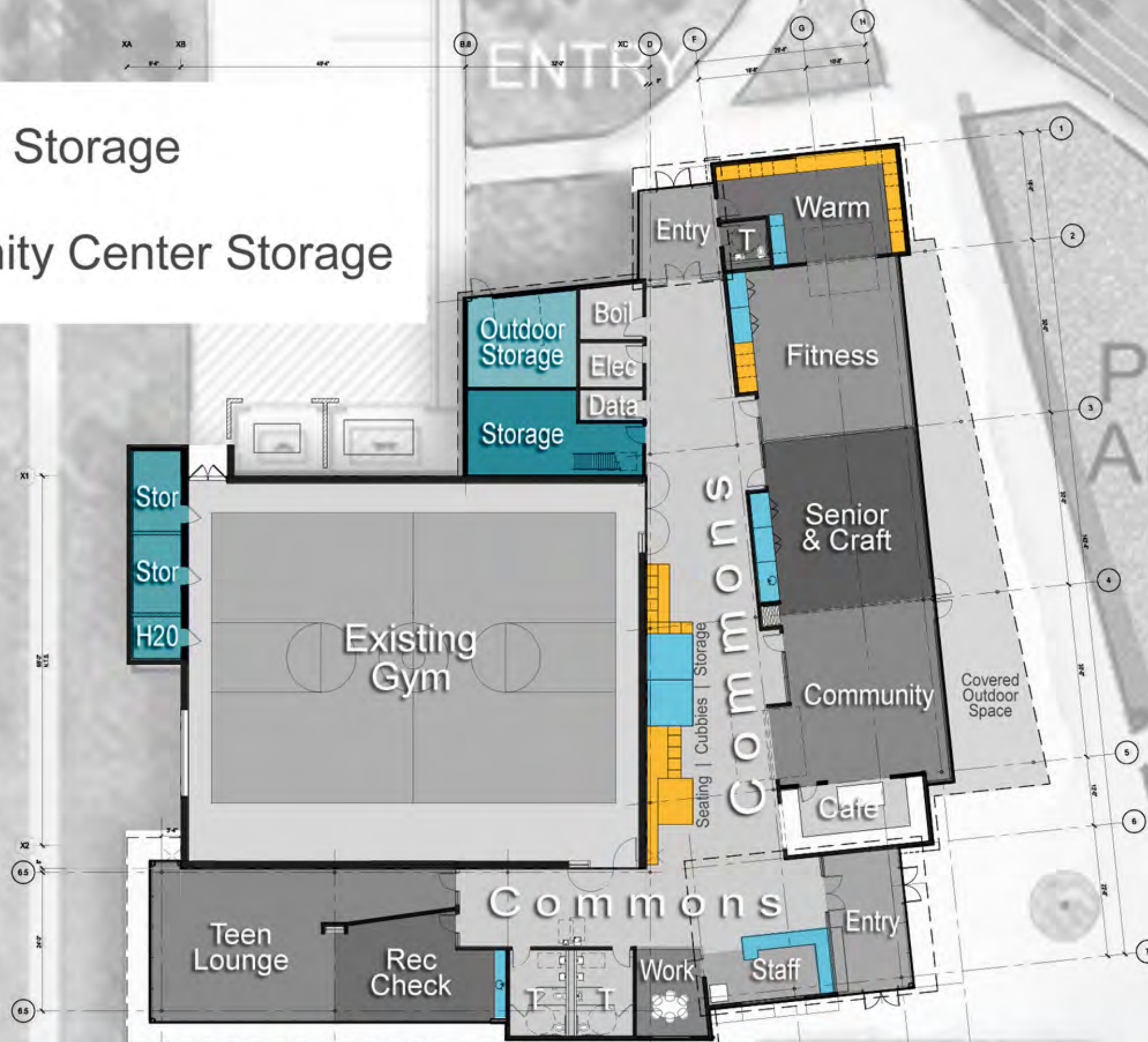
EXISTING LEVEL 1



EXISTING LEVEL 2









View from South East



Palace Community Center

Saint Paul, Minnesota

Schematic
Imagery





View from South East

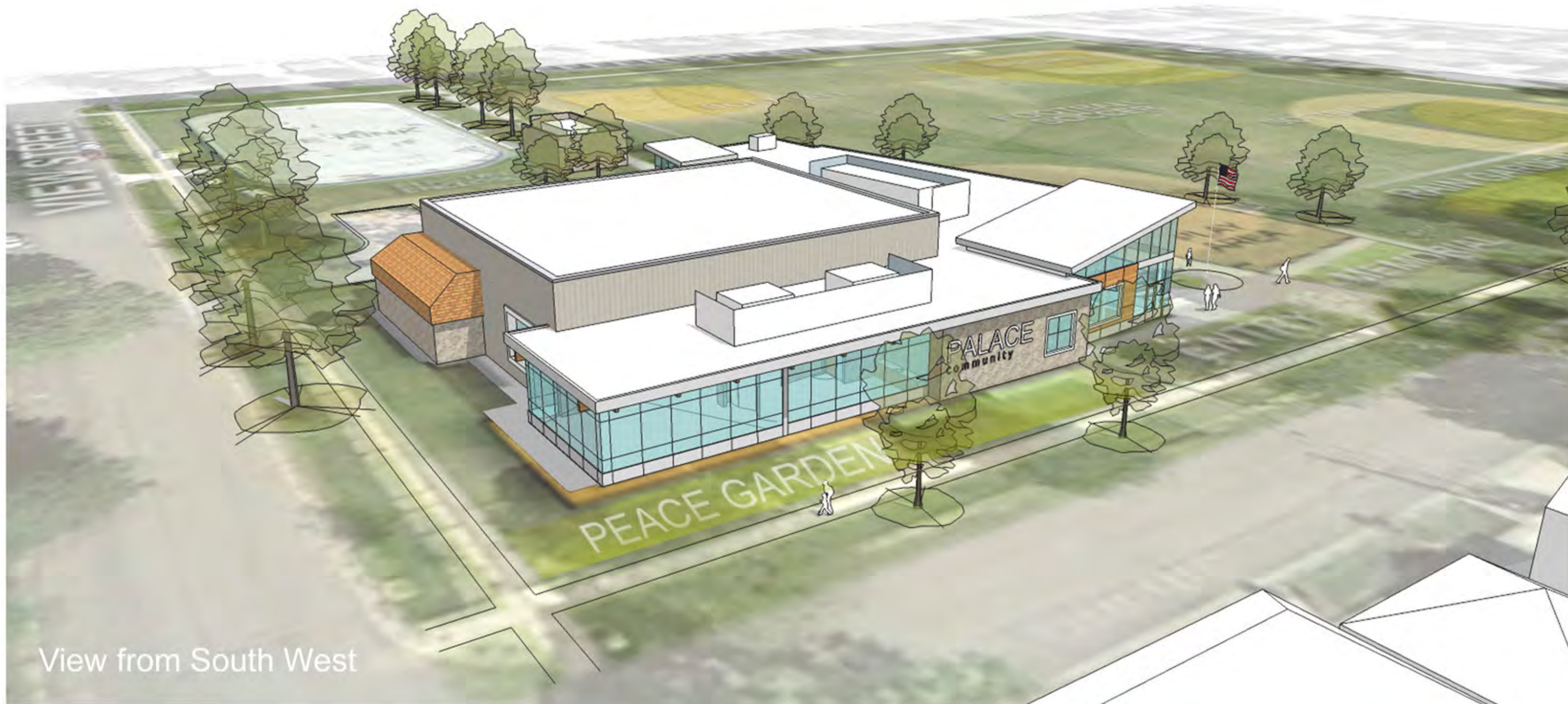


Palace Community Center

Saint Paul, Minnesota

Schematic
Imagery





View from South West

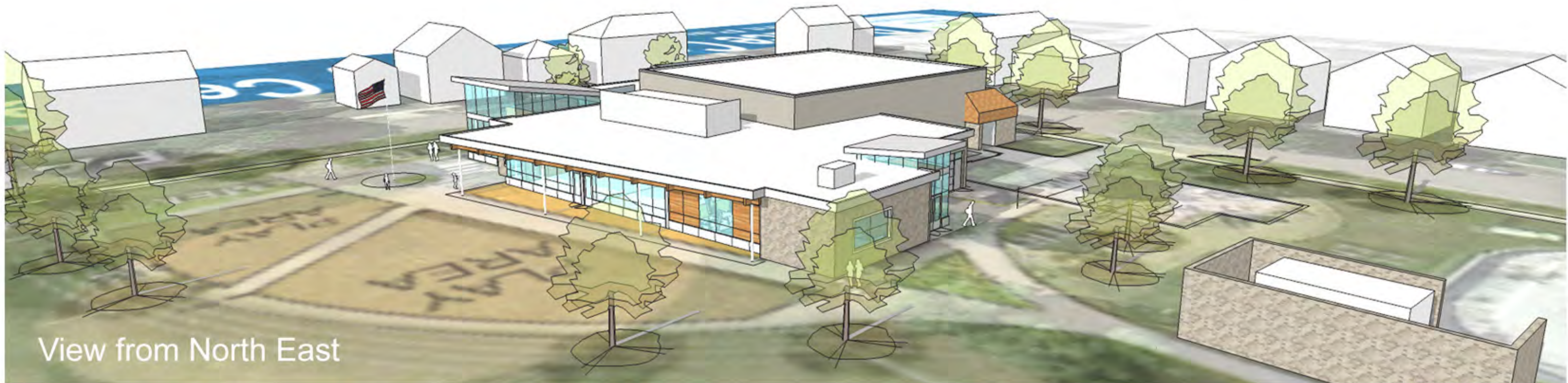


Palace Community Center

Saint Paul, Minnesota

Schematic
Imagery



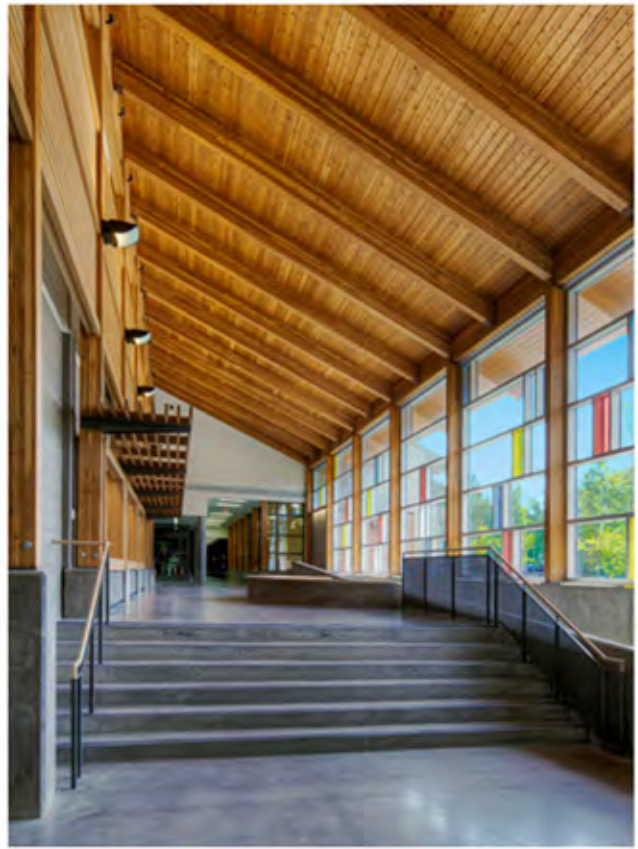


Palace Community Center

Saint Paul, Minnesota

Schematic
Imagery





Palace Community Center

Saint Paul, Minnesota

Proposed
Site Plan





Aerial View



View from North Entry



View from SE Entry



View from Staff Area



Palace Community Center

Saint Paul, Minnesota

Schematic
Imagery



PLAY SYSTEMS



Net Play



Modern Play System



Themed Play



Combination - Traditional/Modern

SURFACING



Synthetic Play Turf



Poured In Place Rubber



Poured In Place Rubber with Fibar Mulch



Palace Community Center

Site Improvements
Play Systems | Surfacing



MISC. EQUIP. AGES 2-5



SPINNING AGES 5-12



CLIMBING/ROCKING AGES 5-12



CLIMBING AGES 5-12



Palace Community Center

Site Improvements
Play Components



PALACE RECREATION CENTER



RENOVATION AND EXPANSION

**DESIGN
OPEN
HOUSE**

TUESDAY

OCTOBER 28TH, 6PM

781 PALACE AVE. ST. PAUL, MN 55102



Thank You!

Project Website:

<http://www.ci.stpaul.mn.us/index.aspx?NID=2907>

Chris Stark, AIA, LEED AP
400 City Hall Annex, 25 West 4th St
Saint Paul, MN 55102
christopher.stark@ci.stpaul.mn.us
651-266-6419



Palace Community Center

Expansion & Renovation
Design Advisory Committee

Meeting #2
October 22nd, 2014

Agenda

- I. Welcome
- II. Building Design Direction
- III. Site Design Overview
- IV. Questions and Discussion

Project Manager:
Chris Stark, AIA, LEED AP
400 City Hall Annex, 25 West 4th St., Saint Paul, MN 55102
Christopher.stark@ci.stpaul.mn.us
651-266-6419



Meeting #1 Review

Goals/Hopes for Palace

- Welcoming
- Bright
- Improved Image
- Improved Safety
- Multi-Generational
- Family Oriented
- Positive for the Community



Palace Softball Team, Date Unknown

Project Process & Schedule

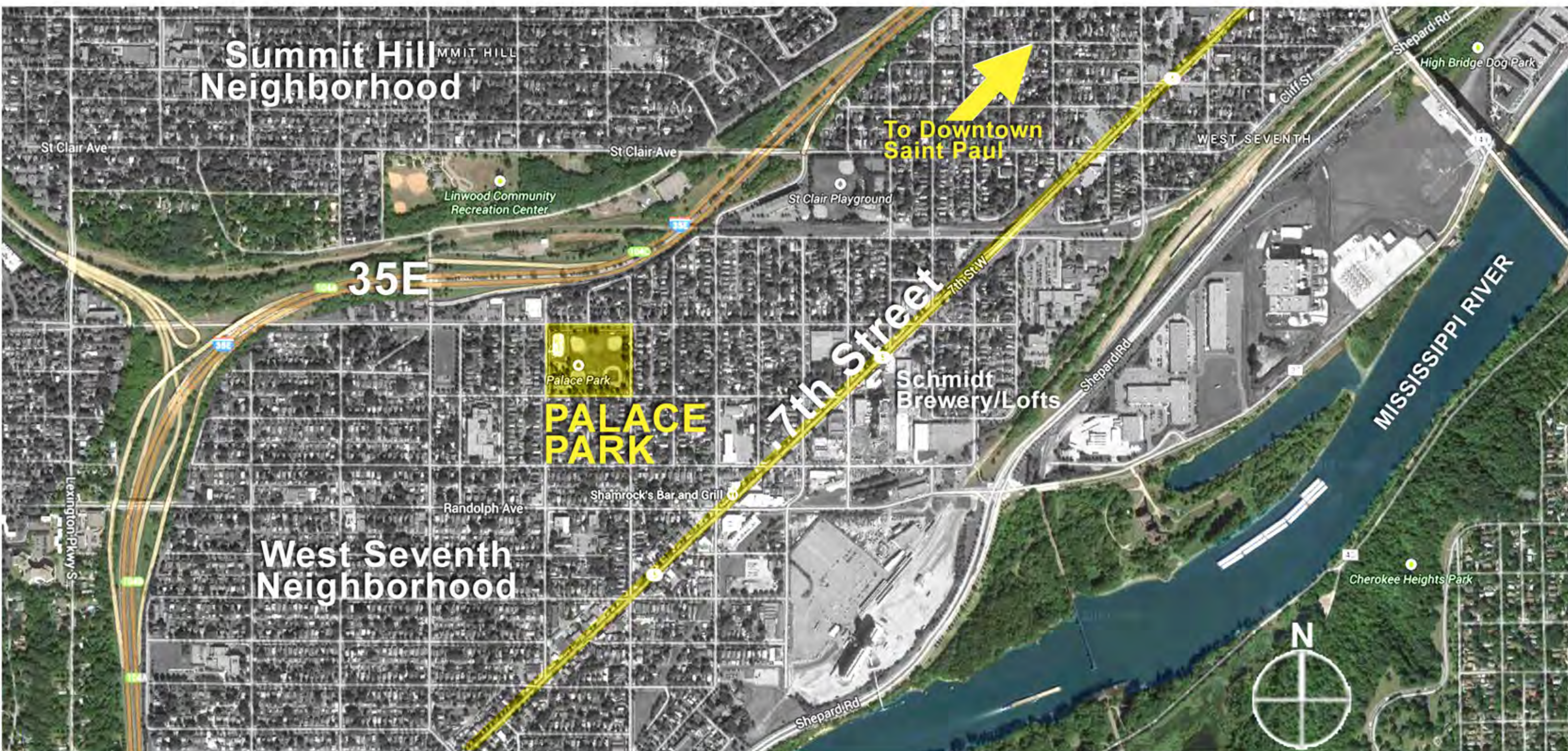


Community Process Date

Design Advisory Committee #1	09/30/14
Design Advisory Committee #2	10/22/14
Design Open House #1	10/28/14
Design Advisory Committee #3	12/02/14
Design Open House #2	01/13/15

Design Process (Draft) Date

Schematic Design	09/30/14
Design Development	11/09/14
Construction Documents	01/13/14
Construction Begins	2015



Palace Community Center

Saint Paul, Minnesota

Site
Location





Palace Community Center

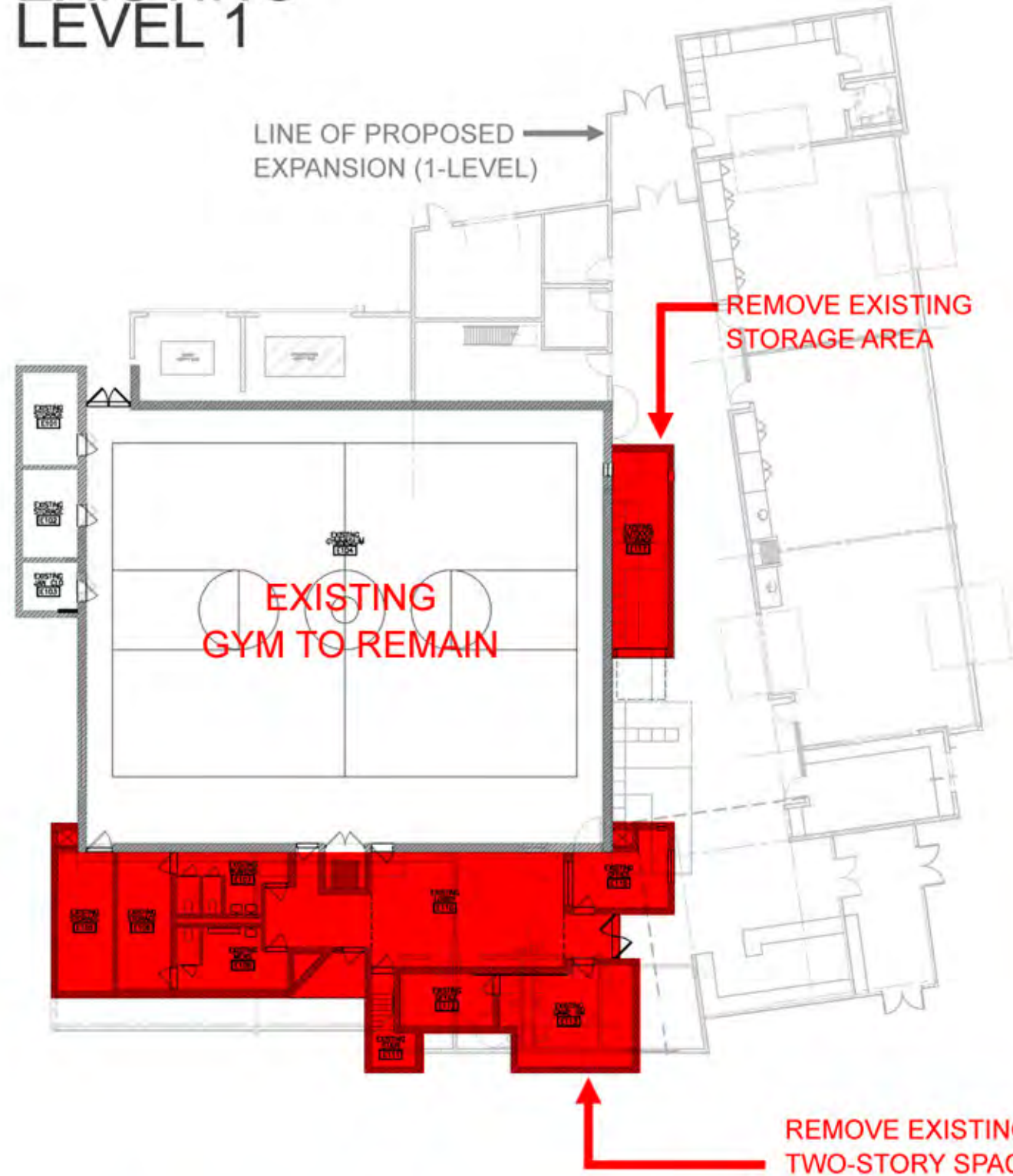
Saint Paul, Minnesota

Existing
Site

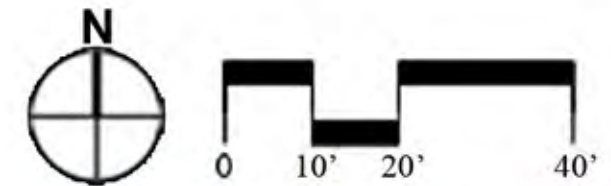


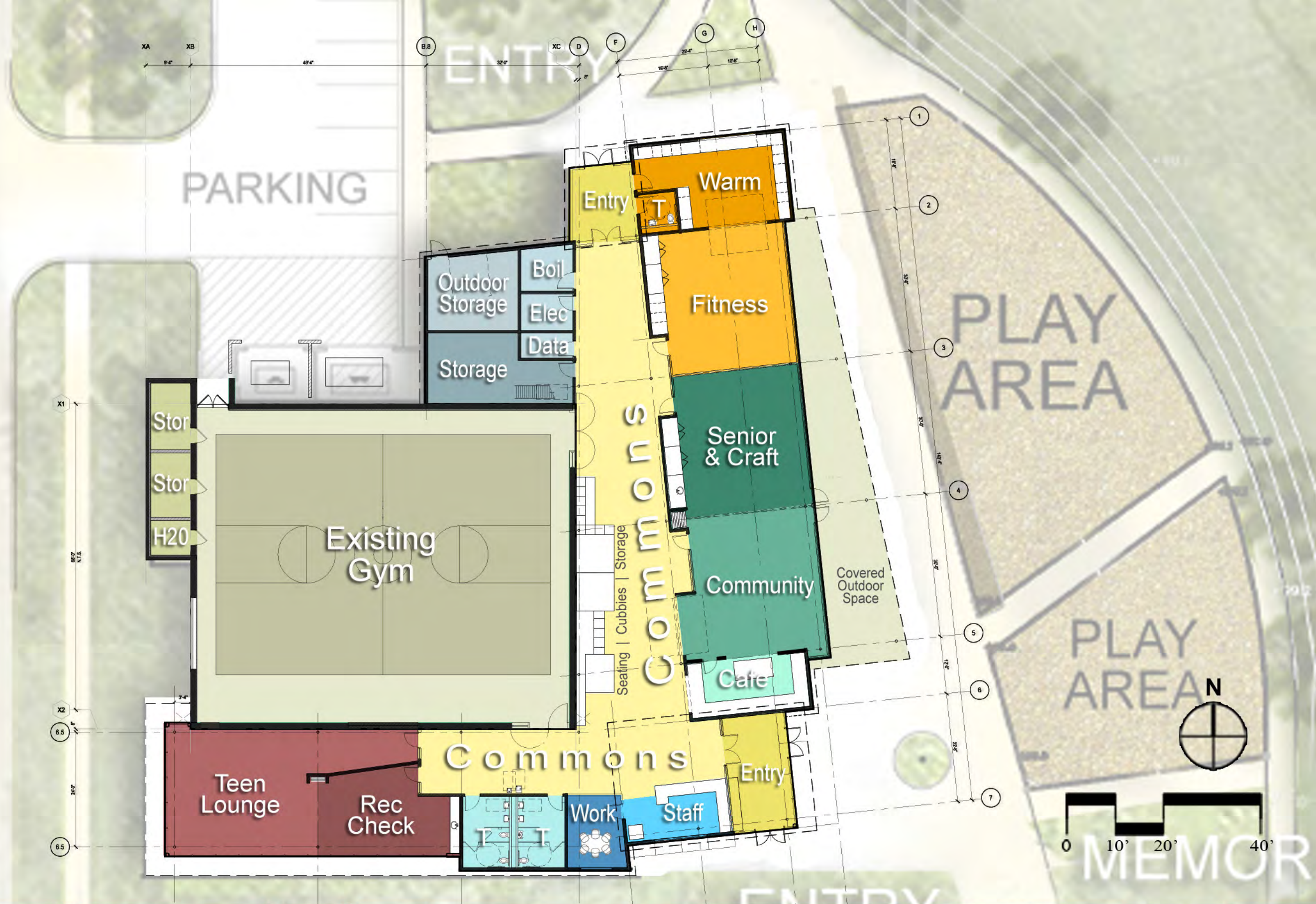


EXISTING LEVEL 1



EXISTING LEVEL 2





- Personal Storage
- Community Center Storage





View from South East



Palace Community Center

Saint Paul, Minnesota

Schematic
Imagery





View from South East

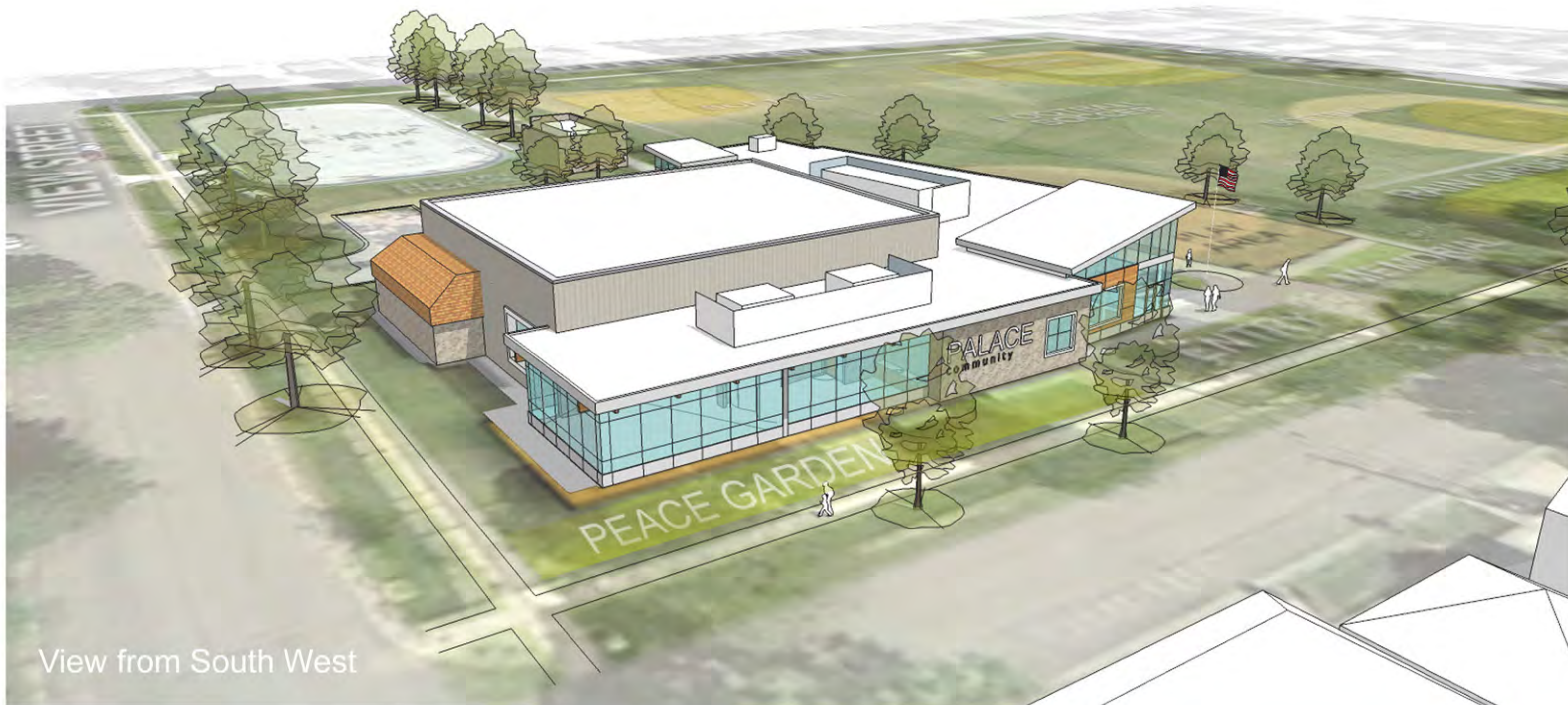


Palace Community Center

Saint Paul, Minnesota

Schematic
Imagery





View from South West



Palace Community Center

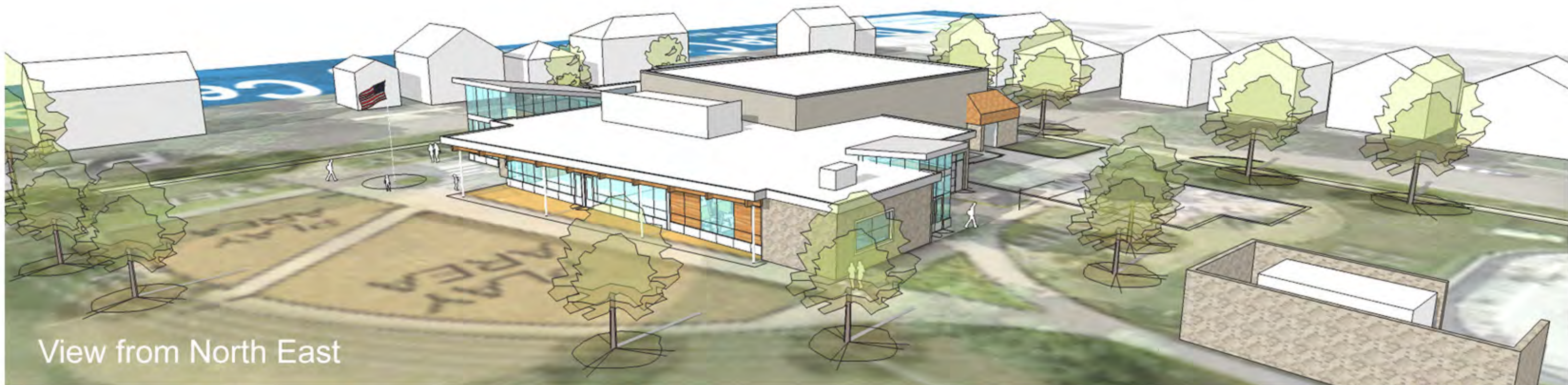
Saint Paul, Minnesota

Schematic
Imagery





View from South West



View from North East

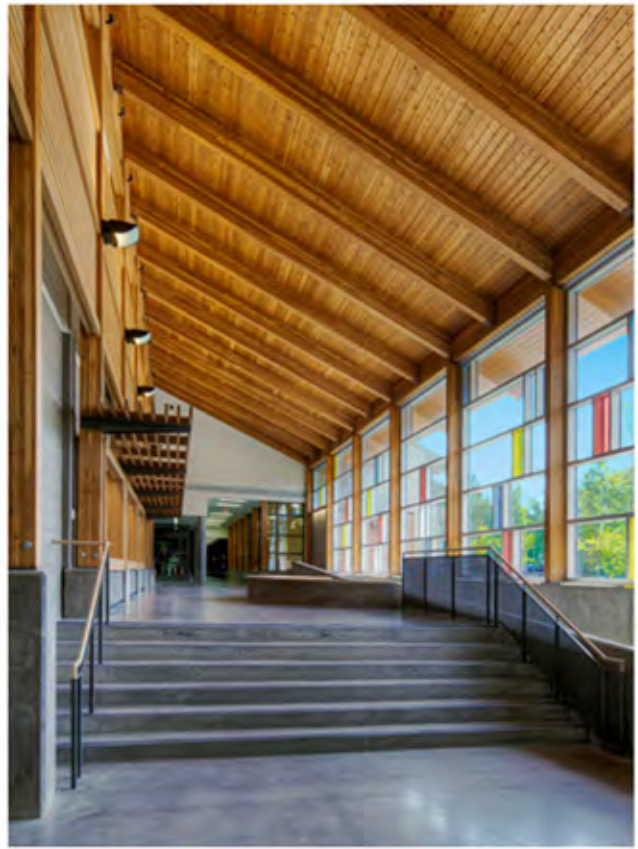


Palace Community Center

Saint Paul, Minnesota

Schematic
Imagery





Palace Community Center

Saint Paul, Minnesota

Proposed
Site Plan





Aerial View



View from North Entry



View from SE Entry



View from Staff Area



Palace Community Center

Saint Paul, Minnesota

Schematic
Imagery



PLAY SYSTEMS



Net Play



Modern Play System



Themed Play



Combination - Traditional/Modern

SURFACING



Synthetic Play Turf



Poured In Place Rubber



Poured In Place Rubber with Fibar Mulch

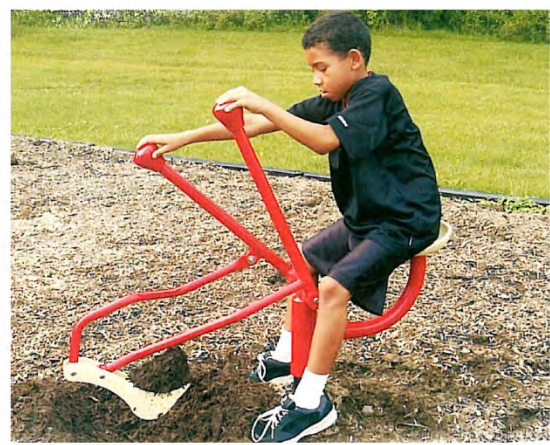


Palace Community Center

Site Improvements
Play Systems | Surfacing



MISC. EQUIP. AGES 2-5



SPINNING AGES 5-12



CLIMBING/ROCKING AGES 5-12



CLIMBING AGES 5-12



Palace Community Center

Site Improvements
Play Components



PALACE RECREATION CENTER



RENOVATION AND EXPANSION

**DESIGN
OPEN
HOUSE**

TUESDAY

OCTOBER 28TH, 6PM

781 PALACE AVE. ST. PAUL, MN 55102

**Saint
paul Parks and Recreation**



Thank You!

Project Website:

<http://www.ci.stpaul.mn.us/index.aspx?NID=2907>

Chris Stark, AIA, LEED AP
400 City Hall Annex, 25 West 4th St
Saint Paul, MN 55102
christopher.stark@ci.stpaul.mn.us
651-266-6419