

MEETING #1

RICE PARK REVITALIZATION Design Advisory Committee

November 19, 2014

6:00 - 8:00 pm

Saint Paul Parks and Recreation

Agenda

- **Meeting Goal:** *Introduce the project. Identify and understand the issues to address in the development of the concept plan for phased improvements.*

Welcome & Introductions

Project Overview

Design Advisory Committee

History of Rice Park

Survey Results

Site Analysis & Inventory

Spatial Characteristics

Brainstorming: Goals/Objectives/Program

Next Steps:

- Next Meeting: January 21, 2015

Project Overview:

Project Description: Develop a concept plan for the phased improvements to Rice Park to revitalize this significant public space in Saint Paul located on the block bounded by Washington Street, 5th Street, 4th Street, and Market Street. The park is 1.6 acres.

Project Background:

- St Paul's first public space since 1849
- Rice Park is an urban park that serves many individuals and hosts many events
- The Saint Paul Garden club raised funds to address the need for improvements at Rice Park.
- The design process will develop a concept plan through a community design process.
- The design process will identify any major elements needed to revitalize Rice Park.
- The design process will develop a budget and a projected timeline for construction.
- There is no funding for implementation of the concept plan at this time.

Project Schedule:

Fall 2014- Internal meetings & formation of Design Advisory committee

Oct 20-Nov 7- Community Input Survey

November 19, 2014- Design Advisory Committee Meeting #1

Review survey results, site analysis, and identify key issues to address

January 21, 2014 - Design Advisory Committee Meeting #2

Develop planning diagrams and basic concept plan(s). Present precedent projects and ideas

Early March- Design Advisory Committee Meeting #3

Completion of concept design plan

Late March - Open house

Share final concept design at a public open house

Design Advisory Committee:

Who is the Design Advisory Committee (DAC)?

A diverse mix of community representatives including property owners, adjacent residents, stakeholders and representatives from business, finance, institutions, and real estate.

Charge of the DAC?

To provide input to the City of Saint Paul Parks and Recreation staff for the concept plan development for the revitalization of Rice Park.

Role of the DAC?

- Define the community needs of the park site
- Review concept plans and provide input on proposed major design elements and park improvements
- Bring suggestions from area residents/businesses to the attention of the design team
- Help communicate project process to community members
- Provide guidance to the parks and recreation design staff on the final design recommendations for the rice park improvements
- Ensure that the full range of local issues are addressed during this design process.



Design Advisory Committee:

Design Advisory Committee process determines the direction of the concept designs

How does the Design Advisory Committee process work?

- Decisions for moving forward will be made by consensus.
- Project information will be available to the public on the city website:
www.stpaul.gov/RICEPARKDESIGN
- Meetings are open to the public. Comments from public outside design advisory committee can be sent through email, telephone or by comment card.
- Design Advisory Committee meetings end after concept design development is complete and consensus has been reached for major project elements

Guidelines for the Design Advisory Committee

- Respect for different perspectives
- Courtesy of one another
- Contribute in a positive way
- Attend every meeting, or let project manager know you will be absent



Design Advisory Committee:

Rice Park Concept Plan will be developed with consideration of multiple factors



HISTORY- TIMELINE OF DESIGN HISTORY



1849 Park dedicated to the City. Improvements were minimal and amounted to lawn mowing. Trees were eventually planted in 1860. 1867 Parks Committee formed.



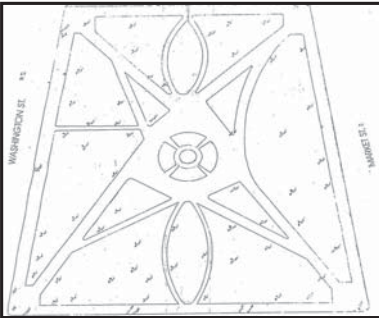
1849 A 'Public Square' was dedicated to the City as part of the Rice/Irvine addition filed by Henry Rice and John Irvine. Later named Rice Park. No real improvements were made to the park other than annual grass mowing, until 1860 when the first trees were planted.



Cast iron statue in Rice Park. Note the 'rustic' bronze benches.



1910 - Construction of the Saint Paul Hotel



1898 Complete Park remodel. -Coinciding with completion of the Landmark Center. Fewer paths, bandshell and original fountain removed.
1910 Additional land acquired for the park - Later used for the construction of the Library .

1917 - Construction of Saint Paul Public Library (George Latimer Central Library)



1960 Park renovation planning began.
1964-1965 Hammel Green Abrahamson design. Plan retained the existing circulation pattern. Circular steps (shown), fountain and sculpture added.



2000 Steps removed for ADA accessibility. Fountain rebuilt, pumps replaced, electrical service upgrade to provide for increased capacity. New circular plaza benches path benches and concrete planters added.



2000-present; Changes since renovation: Charles Shultz 'Peanuts' sculptures installed. Permanent Christmas tree stand installed. Electric service added with new electrical receptacles and new wiring for holiday lights.

1849

1872

1872

1883

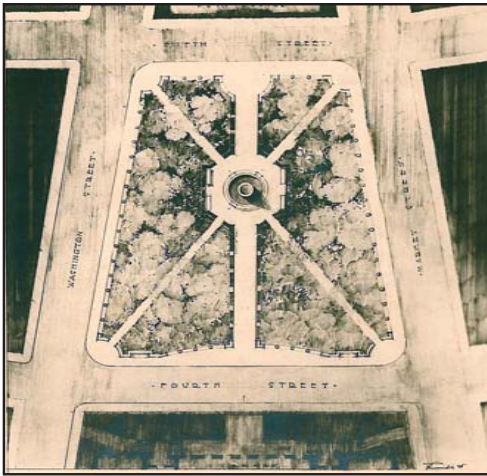
1898

1920-1950

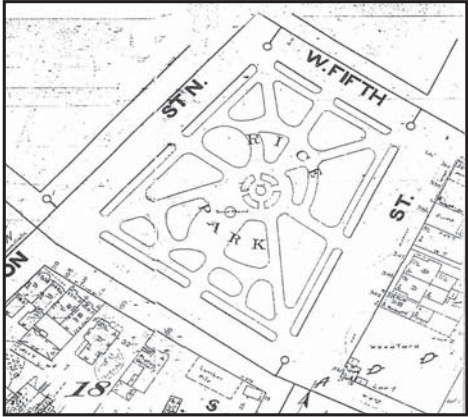
1964

1980

2000



1872 Cast iron ornamental fountain (\$965) and bandstand installed.



1883 Four feet of soil added to the park. Planters and lights added. Plat drawing above shows 1891 Park layout plan.

1894-1901 Construction of Federal Court Building- Landmark Center



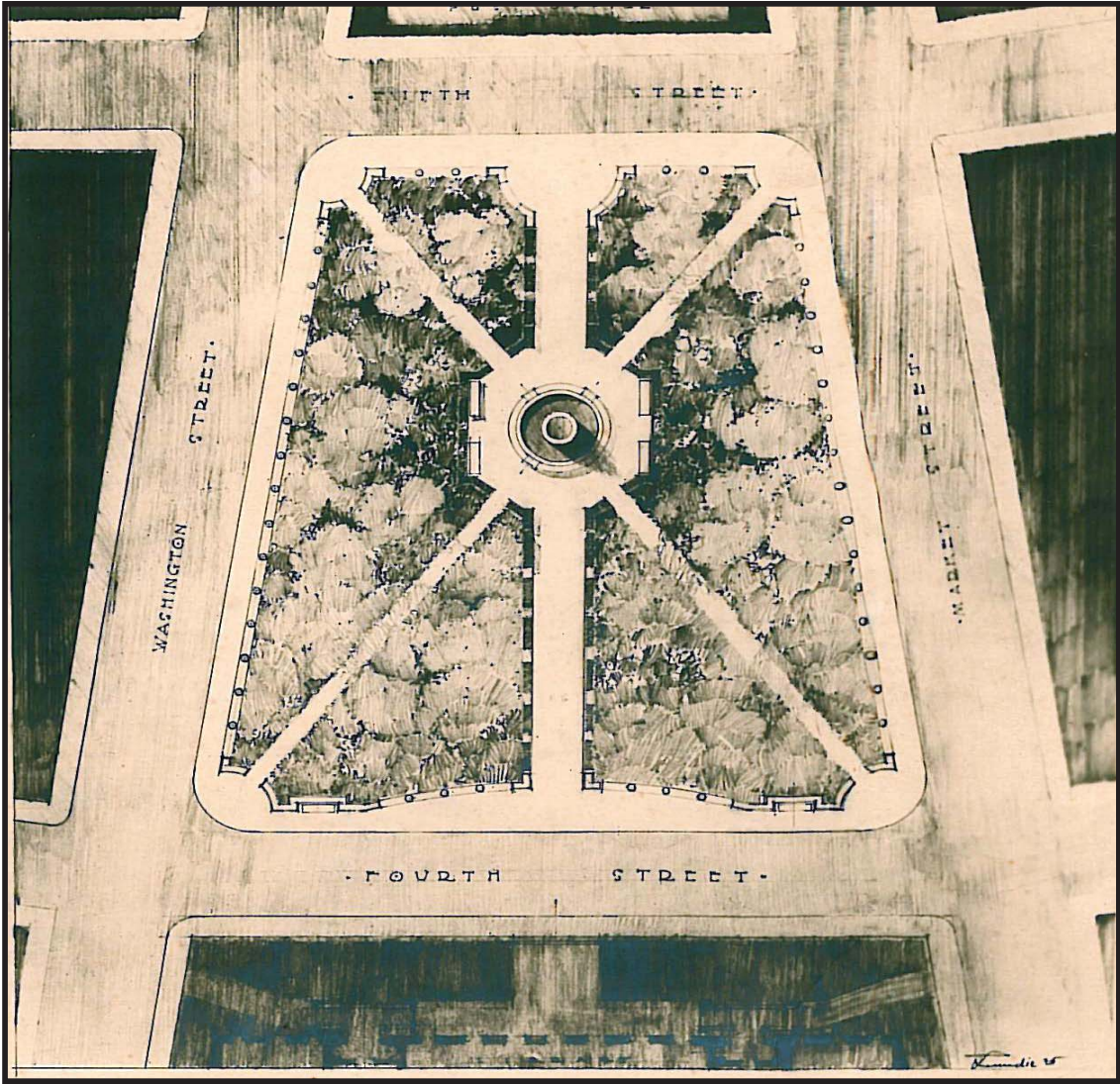
1925 Fountain removed. 1927 Plan uses an X pattern of bituminous walks corner to corner.
1930 - 1950 Park maintenance and the general condition of the park declined.



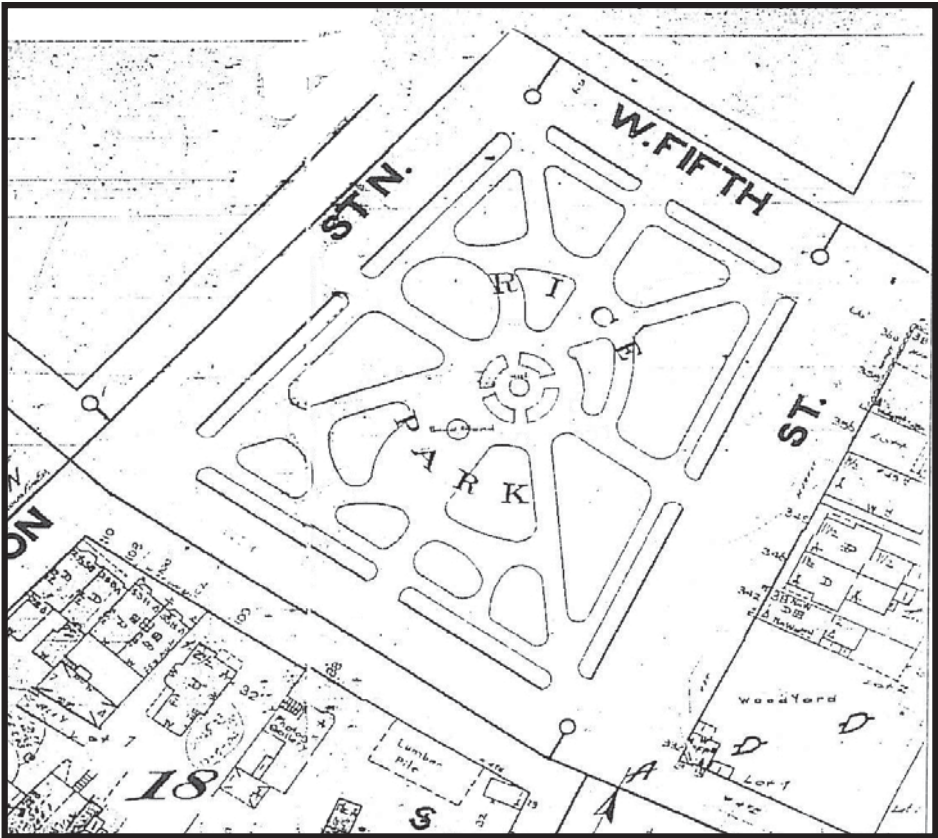
1980 Renovation; Elm and Ash trees replaced with Lindens. Concrete walk replaced, railing, lighting and other landscape planting added.

1985 Construction of the Ordway

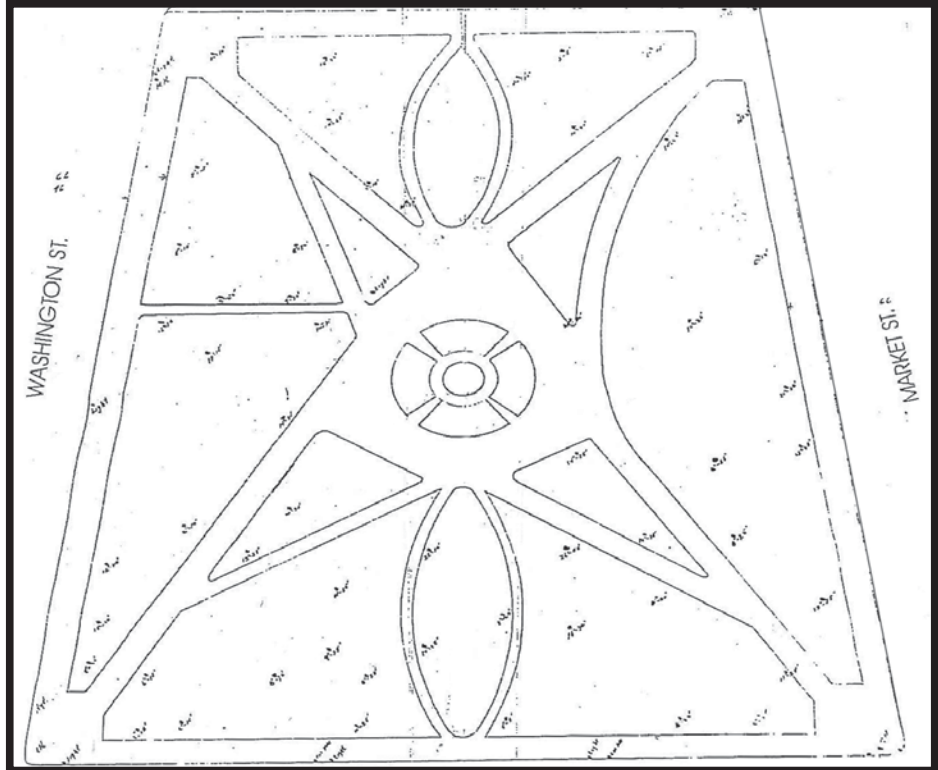
HISTORY- RICE PARK PLAN DRAWINGS



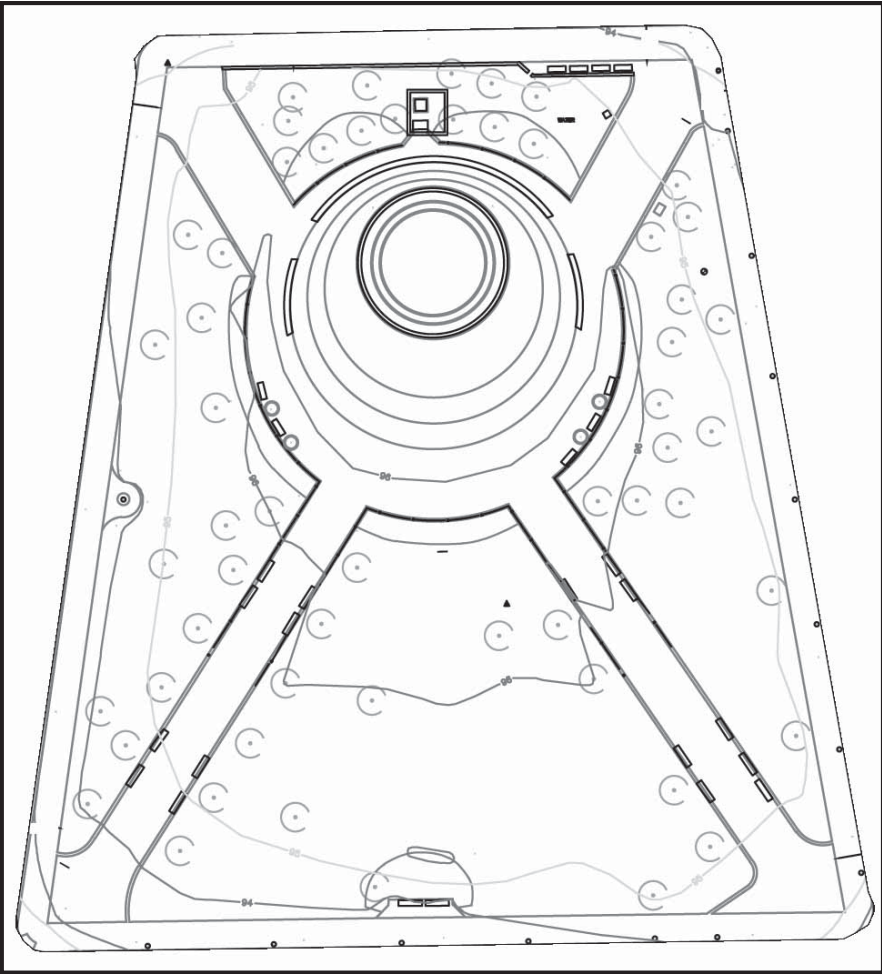
1872



1883



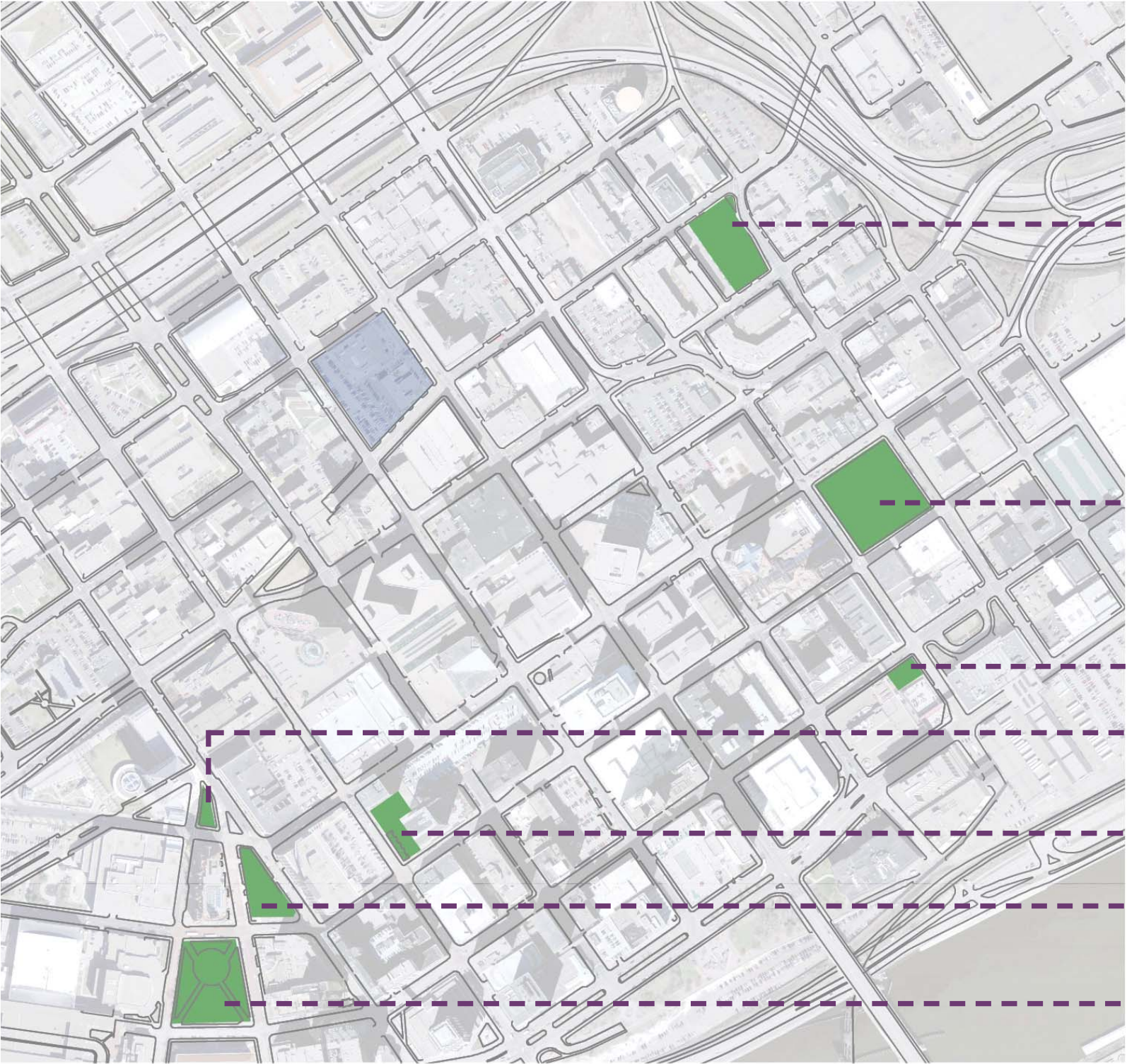
1898



1965

SURVEY RESULTS

EXISTING CONDITIONS - neighborhood context



----- Wacouta Commons - 1.07 Acres

----- Mears Park - 2.1 Acres

----- Downtown Children's Play Area - .18 Acres

----- Hamm Plaza - .13 Acres

----- Ecolab Plaza - .45 Acres

----- Landmark Plaza - .61 Acres

----- RICE PARK - 1.6 Acres

Neighborhood Plan
Date Created: 10/06/2011
Last Revised:

0 200 400 800 Feet



Neighborhood

SIGNIFICANCE

Awards

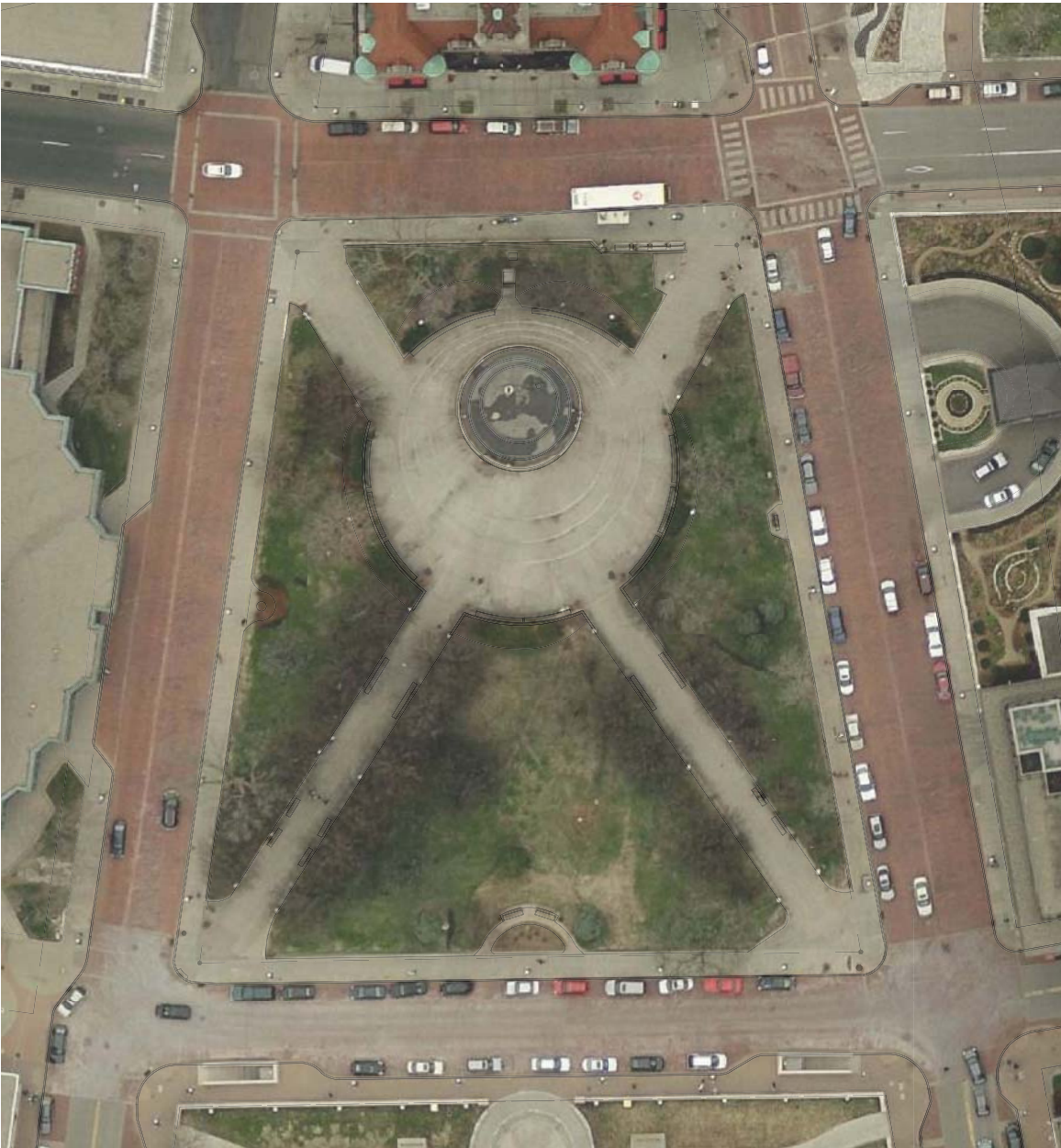
**“American Planning Association Designates
Rice Park One of Top 10 Great Public Spaces for 2011
Park compliments two national landmarks, Ordway Center”**

Events

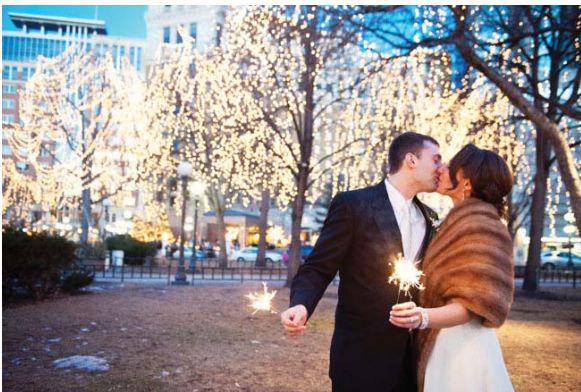
Winter Carnival - 11 days	25,000 attendees
St. Patricks Day - 1 day	800-1000 parade participants
Flint Hills- 7 days	25,000 (over a weekend)
MN Bike Festival - 1 day	2,500 attendees
Summer Dance (Ordway) - 9 weeks	800 attendees (each week)
MN Opera- 1 day	1500 attendees
Rice Park Tree Lighting - 1 day	6000 attendees
Weddings- varies	
Corporate events- varies	
Music in the park - 9 concerts	



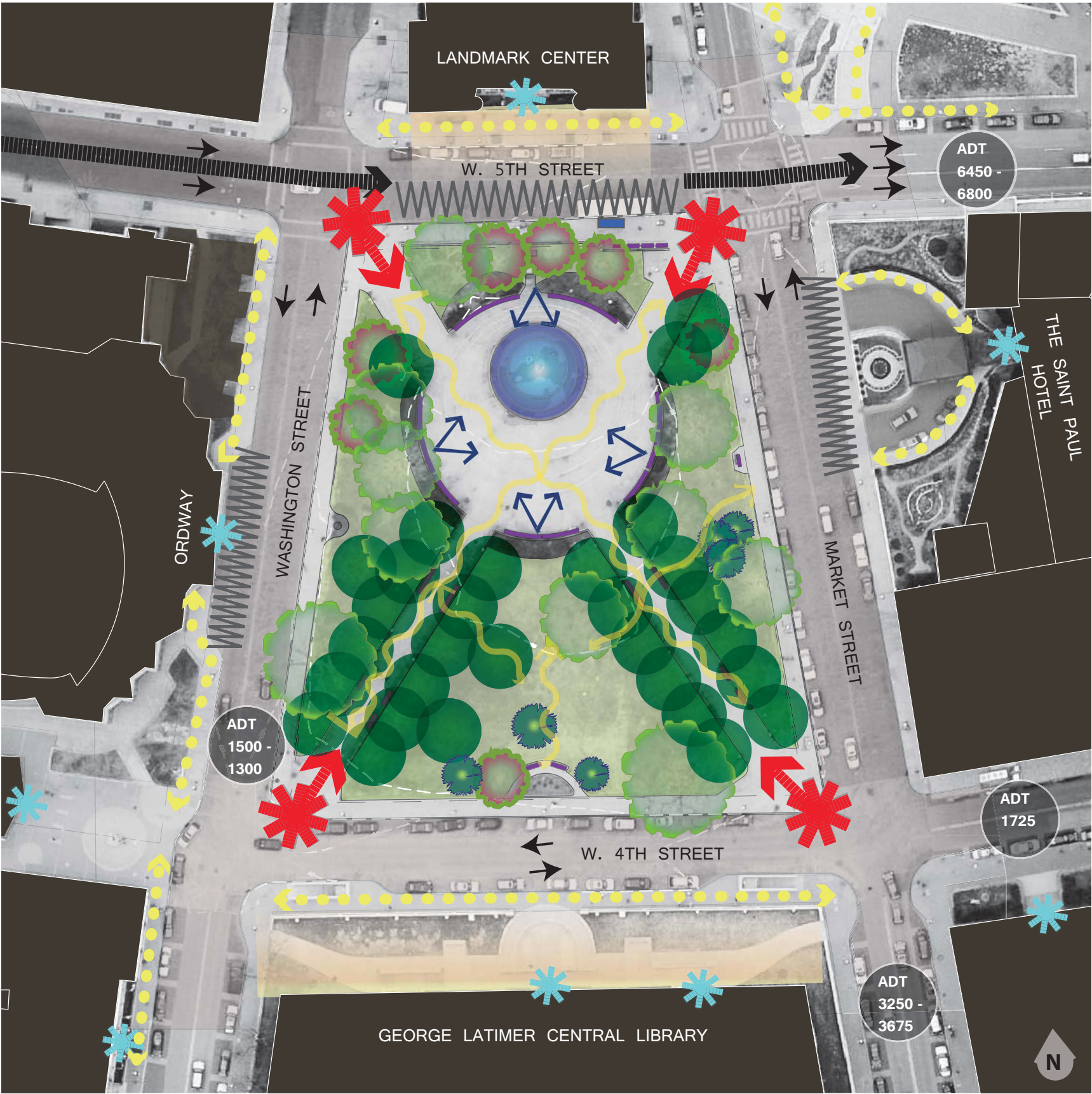
EXISTING CONDITIONS - spring/summer



EXISTING CONDITIONS - winter



EXISTING CONDITIONS



OBSERVATIONS / QUESTIONS

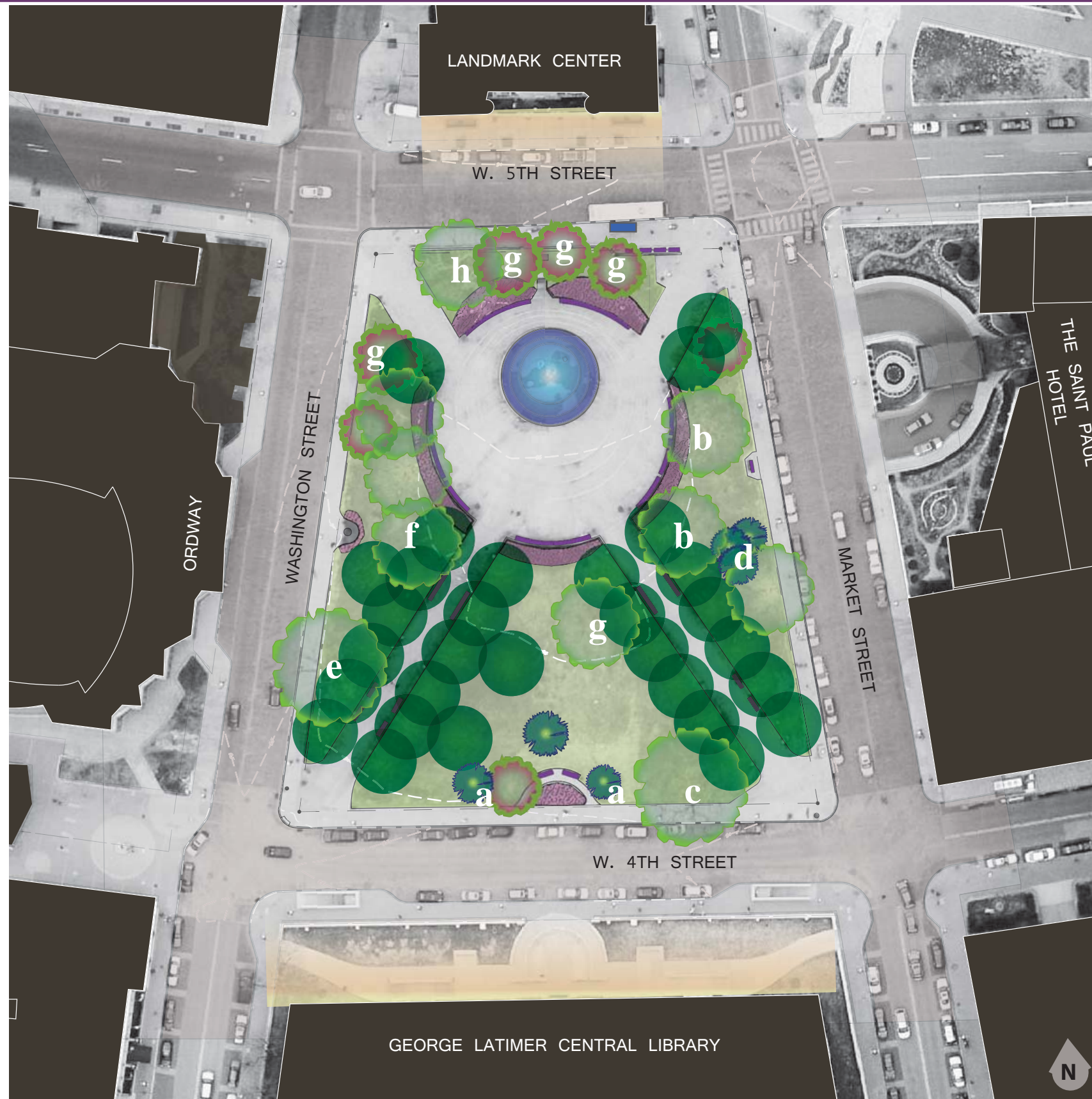
- Significantly higher traffic volume on 5th street
- Central paved space needs activation during non-event days
- Central space is open and predominately out of shade
- Fountain may be enhanced to provide interest during off-season
- Seating, gardens, or elements to draw people into the space along Market and Washington should be considered.
- Footpaths through lawn show pedestrian desire paths east to west, north to south, and diagonally throughout park.
- Sidewalk surrounding park is in need of repair.



key

- BUILDING ENTRY POINTS
- PARK ENTRY POINTS
- VIEWS
- FOUNTAIN
- PEDESTRIAN TRAFFIC INSIDE PARK
- PEDESTRIAN MOVEMENT
- DROP OFF ZONES - BUS OR VALET
- BUSY TRAFFIC

EXISTING CONDITIONS - tree and garden inventory



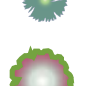



OBSERVATIONS / QUESTIONS

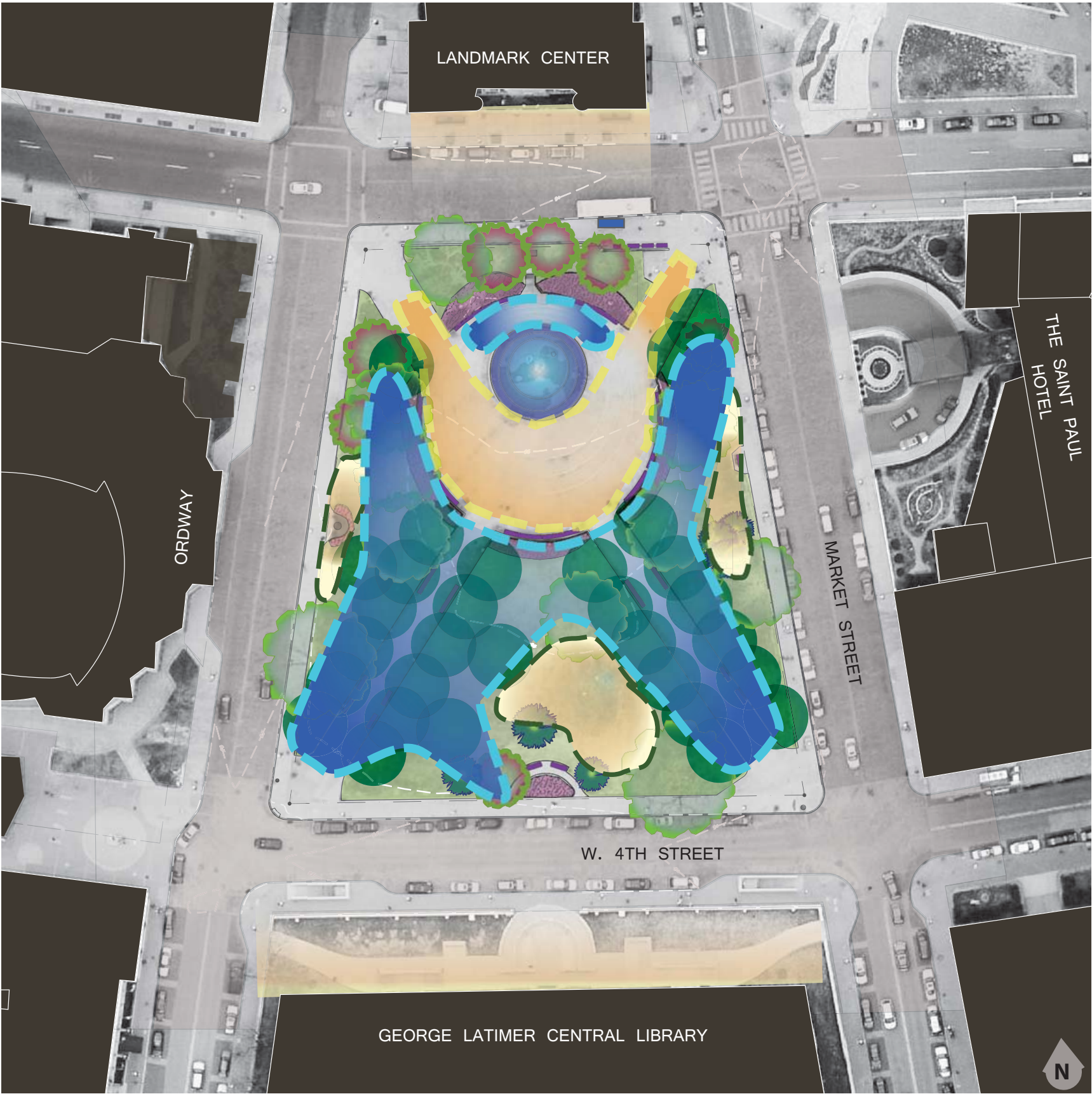
- Lindens border paths in structured linear way. All other tree plantings are random
- Consider removal of crowded trees (ginko and some crabapples)
- Spruce trees on east side of park are thin due to lack of light exposure
- Fruiting ginko trees are problematic due to smelly fruit on sculpture and lawn space
- Irrigation is in need of repair and updating
- Electrical outlets are not always functional for events
- Garden Edges around circle need definition

key

- a. Memorial trees (2) - Blue Spruce
- b. Ginko - Female fruiting trees
- c. Elm tree - possible decay
- d. Spruce trees grouping
- e. Hackberry - open asymmetrical branching
- f. Ginko - crowded
- g. Crabapples - mature
- h. Hackberry - asymmetrical branching

-  DECIDUOUS SHADE TREES - (10)
-  TILIA - LINDEN TREES (30)
-  EVERGREEN TREES - (5)
-  CRAB APPLE TREES - (5)

EXISTING CONDITIONS - sun/shade qualities






OBSERVATIONS / QUESTIONS

- Extreme sun/shade conditions throughout park- central paved area has very little to no shade. Pathways are densely shaded.
- Dense shade conflicts with lawn growth under lindens
- Can trees be selectively removed to provide more filtered light to enhance lawn and garden growing conditions?
- Can shade or trees be introduced in the central gathering space without compromising events space?



key

-  DENSE SHADED AREAS
-  OPEN SUNNY EXPOSED AREAS
-  OPEN SUNNY LAWN AREA

LANDMARK CENTER

W. 5TH STREET

WASHINGTON STREET

ORDWAY

MARKET STREET

THE SAINT PAUL HOTEL

W. 4TH STREET

GEORGE LATIMER CENTRAL LIBRARY

1. 2. 3. 4. 5. 6. 7. 8. 9. 10. 11. 12.

N



- Consolidate smaller monuments and plaques

1. F. Scott Fitzgerald
2. Eva Jones Plaque
3. “The Source” sculpture and fountain
4. Dedication plaque on drinking fountain
5. Peace Pole
6. Kiosks (2)
7. Rice Park Historical Marker

RICE PARK

design advisory committee

November 19, 2014- MEETING #1

MOVING FORWARD



DISCUSSION:

**WHAT ARE THE MAIN IMPROVEMENTS
TO ADDRESS IN THE CONCEPT PLAN?**

NEXT STEPS:

**DEVELOP CONCEPT DIAGRAMS,
1-2 CONCEPT PLANS. & PRESENT
PRECEDENT IMAGES**

precedent: Bryant Park, New York City, New York



“Rice Park’s splendor stems from its simplicity and permanence...It provides a visual and physical respite from the impressive collection of buildings and busy street life that surround it. Having undergone several transformations during its 162 years, the park illustrates how planning, with the support of dedicated citizens, can ensure the longevity and vitality of a community treasure”

**NEXT MEETING: JANUARY 21, 2015 - 6pm
THANK YOU!**