

# welcome



## PROJECT INTRO

Design Advisory Committee Meeting #2  
October 23, 2014

# DICKERMAN PARK

Saint Paul Parks and Recreation

## Developing a Vision

The committee will discuss and provide input on a preferred direction including overall layout, design elements and style.

### Agenda:

- introductions
- review of last meeting
- inventory & analysis
- conceptual designs
- discussion

#### MEETING GOALS AND AGENDA

Design Advisory Committee Meeting #2  
October 23, 2014

# DICKERMAN PARK

Saint  
Paul Parks and Recreation



## INTRODUCTIONS

Design Advisory Committee Meeting #2  
October 23, 2014

# DICKERMAN PARK

Saint  
Paul Parks and Recreation

## Design Advisory Committee

- communicate community and neighborhood needs
  - review plan concepts
- provide input on major design elements and themes
  - bring suggestions from broader community
  - ensure full range of issues is discussed

### Expectations:

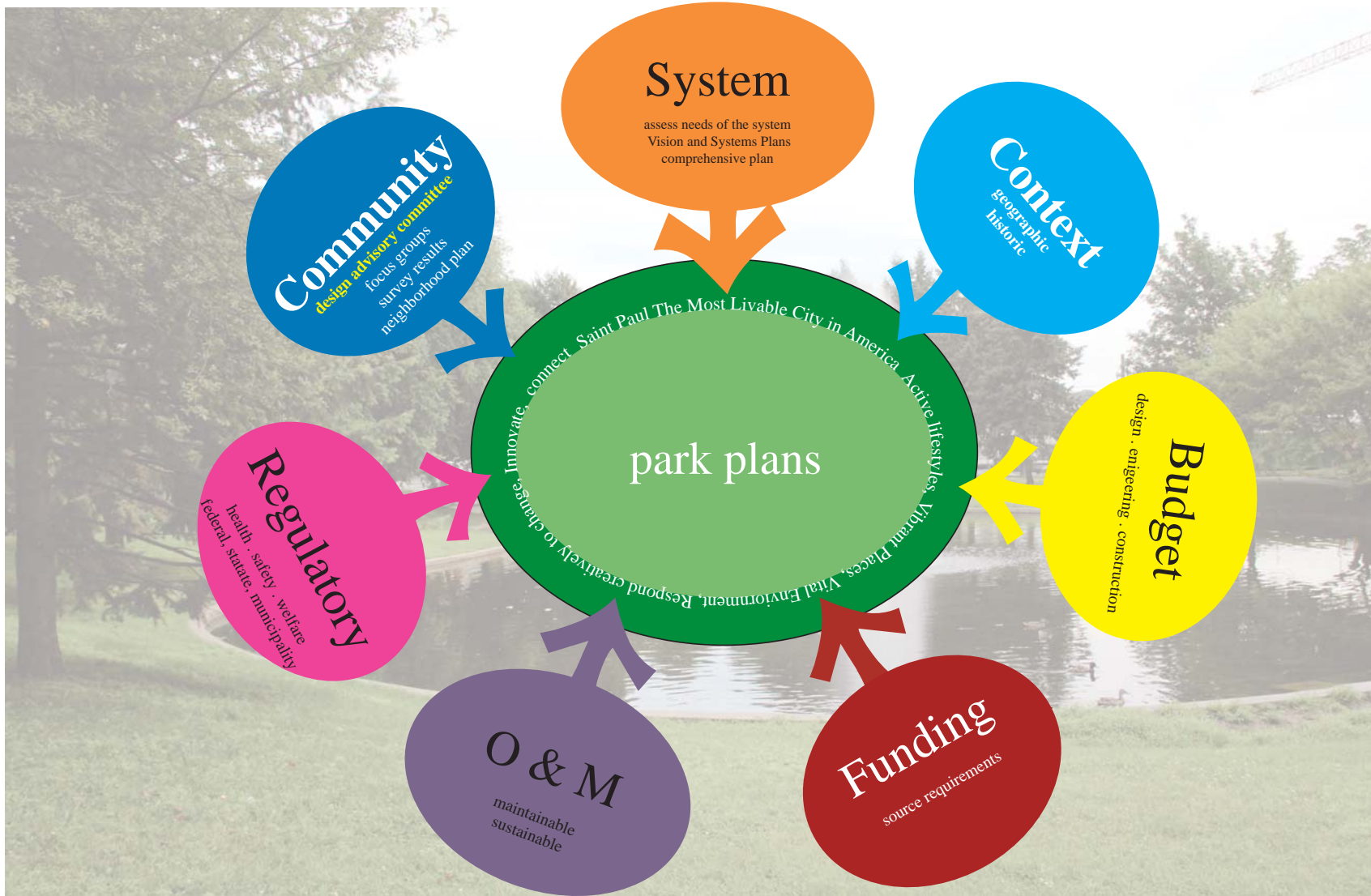
- respect for different perspectives
  - courtesy,
- focused positive contribution
  - attendance

#### COMMITTEE RESPONSIBILITIES

Design Advisory Committee Meeting #2  
October 23, 2014

# DICKERMAN PARK

Saint  
Paul Parks and Recreation



## DESIGN PROCESS

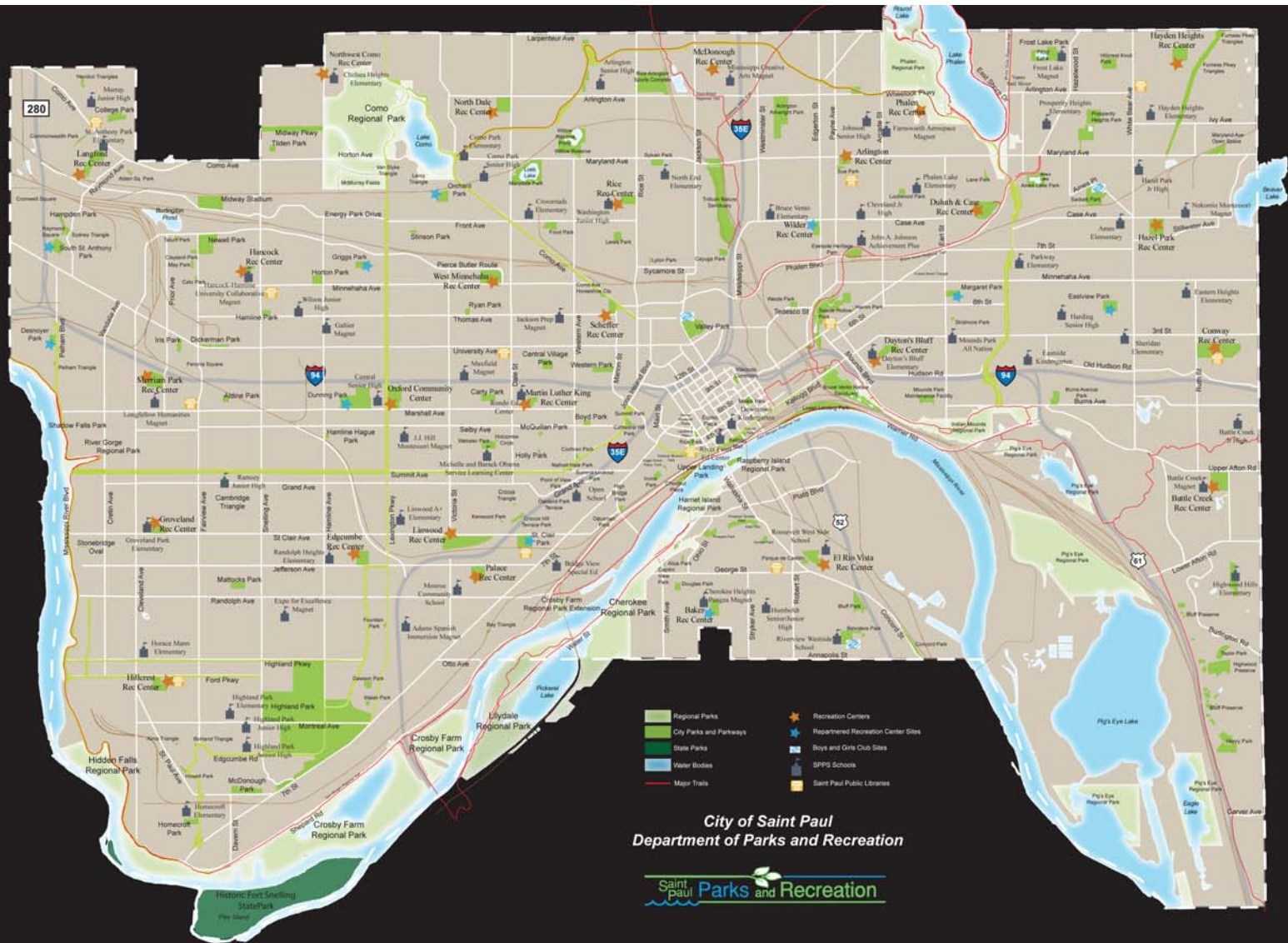
Design Advisory Committee Meeting #2

October 23, 2014

# DICKERMAN PARK

Saint Paul Parks and Recreation





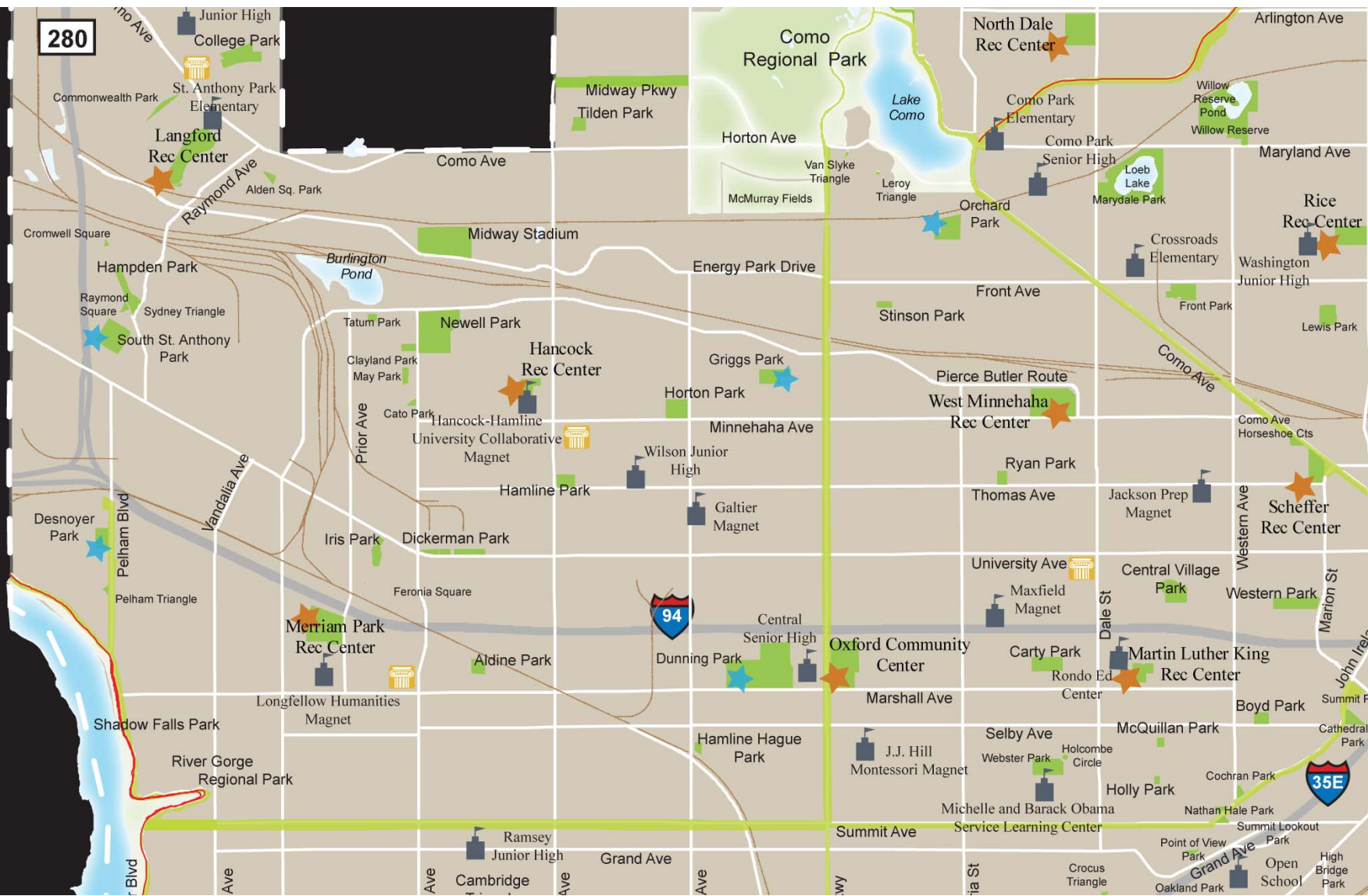
## SYSTEM

Design Advisory Committee Meeting #2

October 23, 2014

# DICKERMAN PARK

Saint Paul Parks and Recreation



## SYSTEM

Design Advisory Committee Meeting #2

October 23, 2014

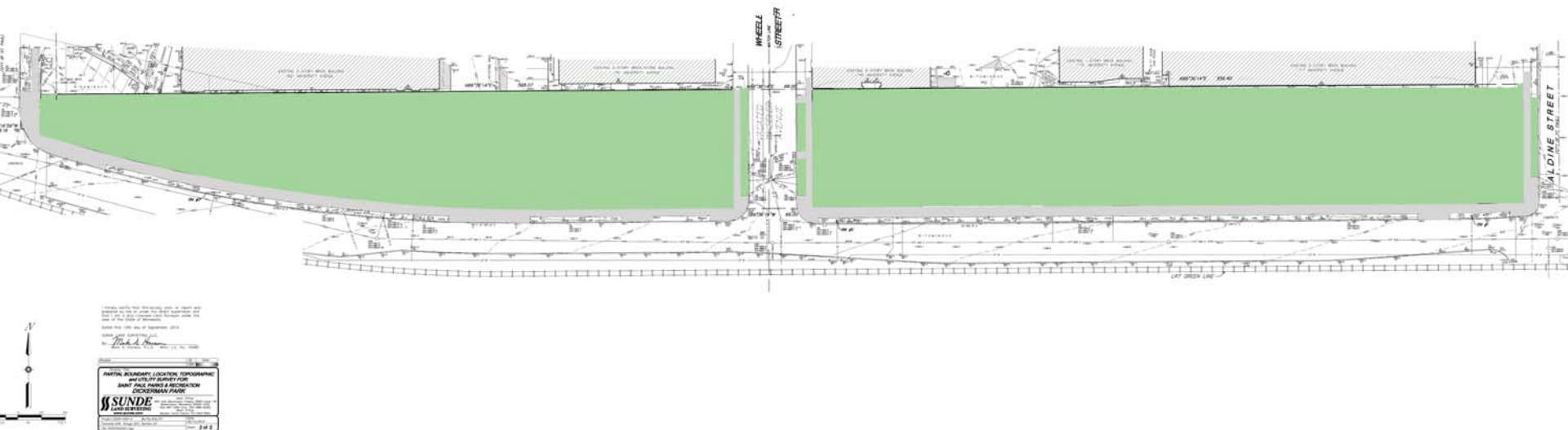
# DICKERMAN PARK

Saint Paul Parks and Recreation









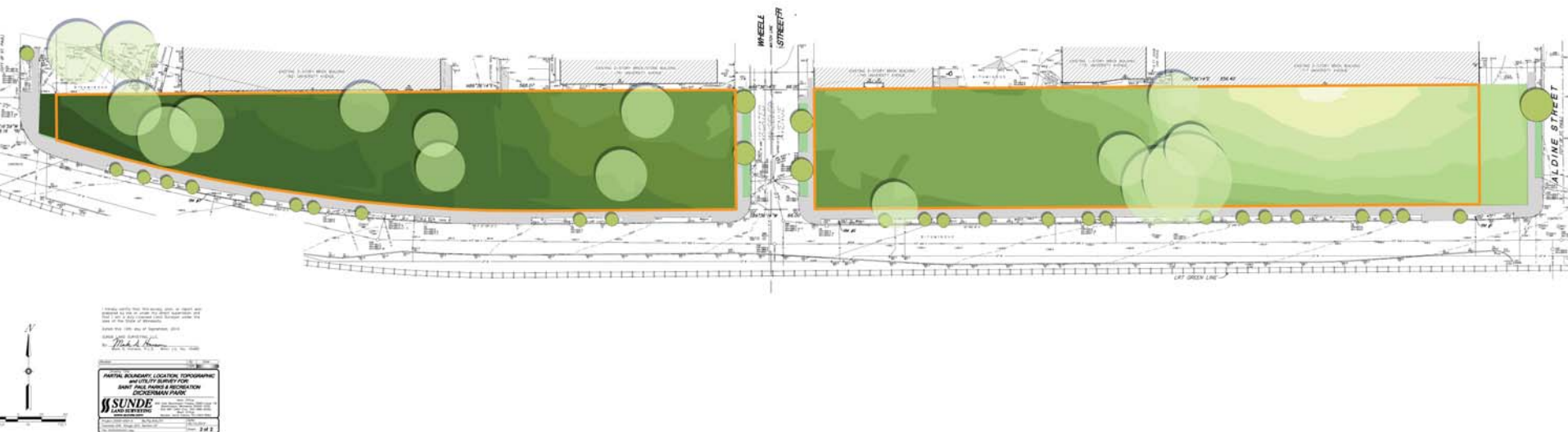
## CONTEXT - BLANK SLATE

Design Advisory Committee Meeting #2

October 23, 2014

# DICKERMAN PARK

Saint Paul Parks and Recreation



## CONTEXT - TREES AND TOPOGRAPHY

Design Advisory Committee Meeting #2

October 23, 2014

# DICKERMAN PARK

Saint Paul Parks and Recreation



## CONTEXT - VIEWS AND ACCESS

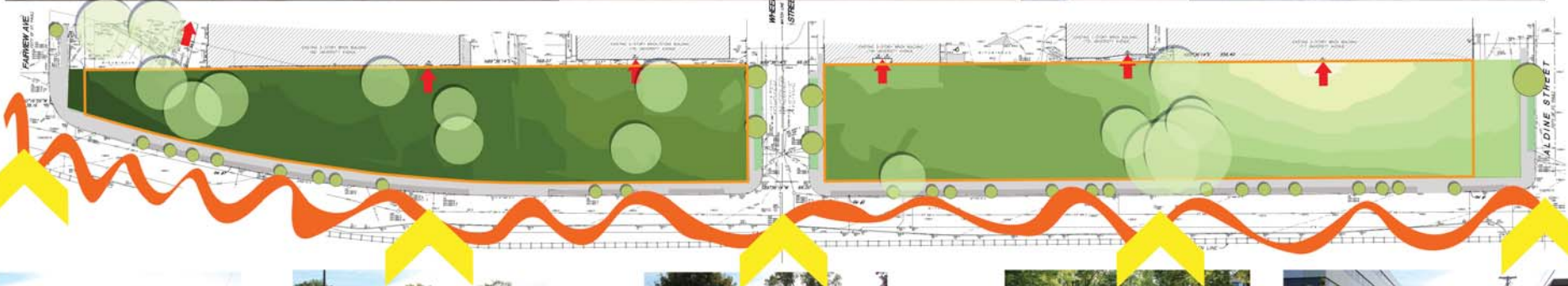
Design Advisory Committee Meeting #2

October 23, 2014

# DICKERMAN PARK

Saint  
Paul Parks and Recreation





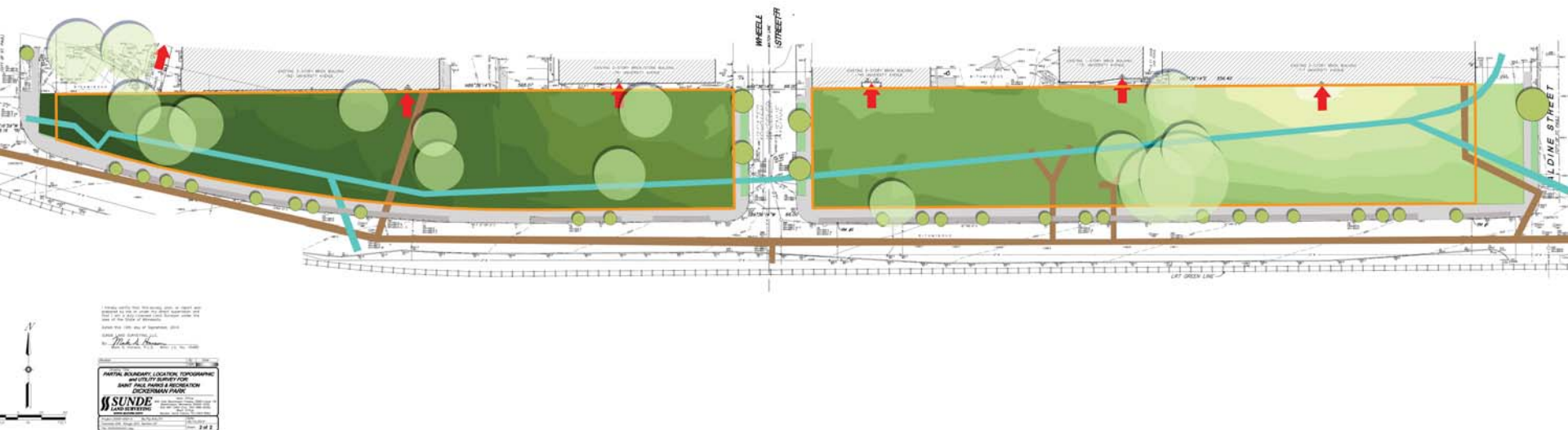
## CONTEXT - NOISE AND ACTIVITY

Design Advisory Committee Meeting #2

October 23, 2014

# DICKERMAN PARK

Saint Paul Parks and Recreation



## CONTEXT - INFRASTRUCTURE

Design Advisory Committee Meeting #2

October 23, 2014

# DICKERMAN PARK

Saint Paul Parks and Recreation



## REGULATIONS- LEAST RESTRICTIVE

Design Advisory Committee Meeting #2

October 23, 2014

# DICKERMAN PARK

Saint  
Paul Parks and Recreation





## REGULATIONS - EASEMENTS

Design Advisory Committee Meeting #2

October 23, 2014

# DICKERMAN PARK

Saint Paul Parks and Recreation



## COMPOSITE ANALYSIS

Design Advisory Committee Meeting #2

October 23, 2014

# DICKERMAN PARK

Saint  
Paul Parks and Recreation







## SURVEY RESULTS - VISION

Design Advisory Committee Meeting #2

October 23, 2014

# DICKERMAN PARK

Saint Paul Parks and Recreation

# goals & objectives

## access

- **Bike Accommodations including repair & station, parking 1\***
- **Connections to other open spaces 1\***
- **Enhanced Lighting 1\***
- ACCESS FOR BUSINESS EMPLOYEES AND PATRONS/ CLIENTS/CUSTOMERS
- INCORPORATE EAST WEST CONNECTION FOR BICYCLES
- VISIBILITY
- PULL PEOPLE INTO THE PARK VISUALLY
- CONSIDER CONVERTIBLE STREET AT WHEELER OR WAY TO MINIMIZE WHEELER AS A BARRIER IN THE PARK
- PARK AS A CONNECTOR FOR LRT USERS - BOTH FAIRVIEW STATION AND SNELLING STATION UERS
- CONTEXT

## comfort/image

- **Integrate Art 4\***
- **Provoke exploration 2\***
- **Barriers for street noise and traffic 2\***
- NON-TRADITIONAL
- USABILITYCREATE A DETOUR
- VISUAL INTEREST
- TIE IN LARGER CONTEXT
- CONSIDER SAFETY
- BALANCE PUBLIC/PRIVATE
- EVALUATE VEGETATION

## activities

- **Use Zones 4\***
- **Kids/Families/ All Ages 3\***
- **All Seasons 1\***
- VARIED SCHEDULES
- NIGHT MARKETS
- OUTDOOR MOVIES
- SKATE RINK
- FLEXIBLE SPACE
- PHOTO BOOTH
- PROVIDE USE ZONES THROUGH THE PARK COMPATIBLE WITH ADJACENT BUSINESSES AND

## sociability

- **Seating 3\***
- **Gathering Areas 2\***
- Engage tenants in all aspects of process to foster investment and stewardship 1\*
- CONSIDER ADDITIONAL PARTNERSHIPS - HAMLINE & ST. THOMAS AS POSSIBLE PARTNERS IN PROJECT.
- CONSIDER CHANGING DEMOGRAPHICS AND USES IN THE AREA DUE TO TRANSIT

\*the number of votes received by committee members after the meeting as one of the top three goals for the park

## D.A.C. GOALS

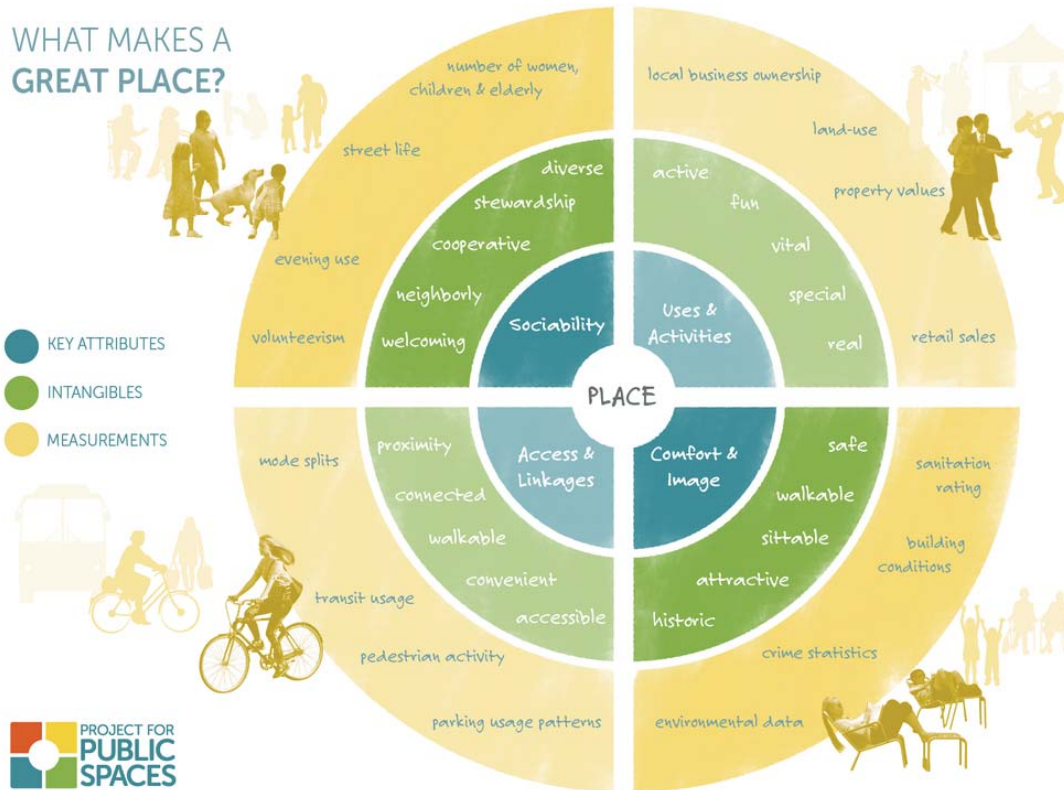
Design Advisory Committee Meeting #2  
October 23, 2014

# DICKERMAN PARK

Saint Paul Parks and Recreation

# Site Considerations:

WHAT MAKES A  
GREAT PLACE?



access  
comfort/image  
activities  
sociability

**SUCCESSFUL URBAN SPACES**

Design Advisory Committee Meeting #2

October 23, 2014

**DICKERMAN PARK**

Saint Paul Parks and Recreation



# program

Develop an *Iconic design* that *activates* the park, serves the *neighborhood and transit users*, and provides an *identity* for the park

1. Preserve the valued stand of *large trees* in the park
2. Provide *plaza spaces* for socializing with ample *seating*
3. Introduce *flexible spaces* for use *thoroughout the year* by *all ages* and include *playful and engaging* elements
4. Incorporate *public art* that relates to the history and culture



## PROGRAM

Design Advisory Committee Meeting #2  
October 23, 2014

# DICKERMAN PARK

Saint Paul Parks and Recreation



## COMMON THROUGH CONCEPTS

Design Advisory Committee Meeting #2

October 23, 2014

# DICKERMAN PARK

Saint Paul Parks and Recreation





## CONCEPT 1

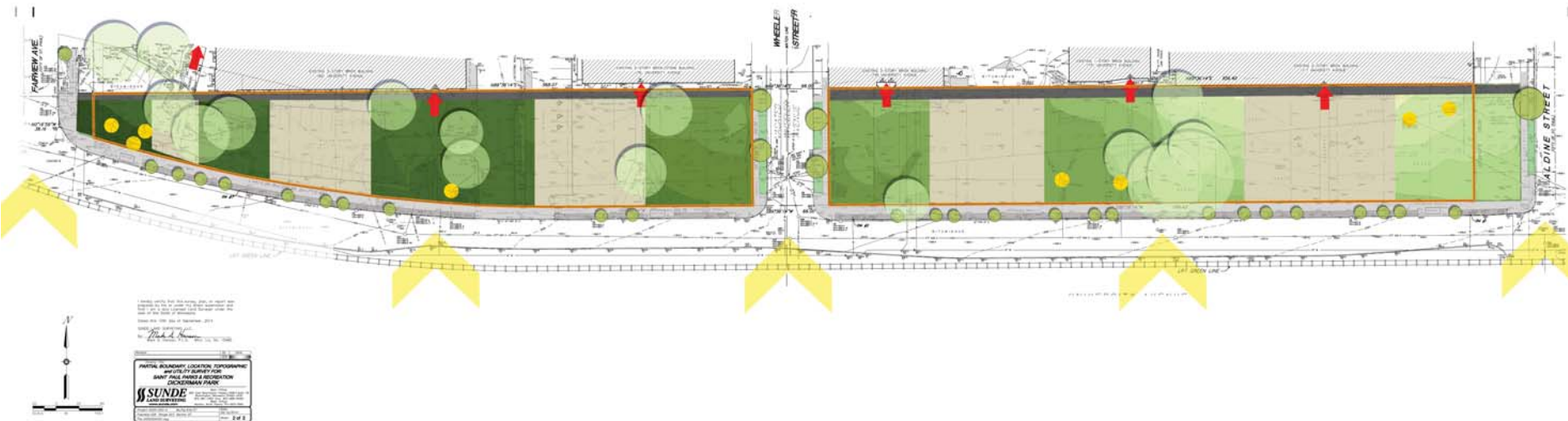
Design Advisory Committee Meeting #2

October 23, 2014

# DICKERMAN PARK

Saint  
Paul Parks and Recreation





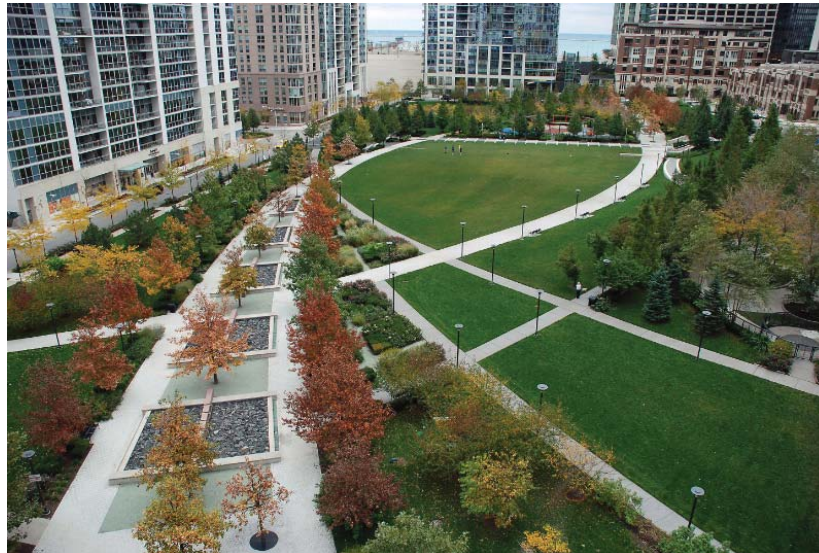
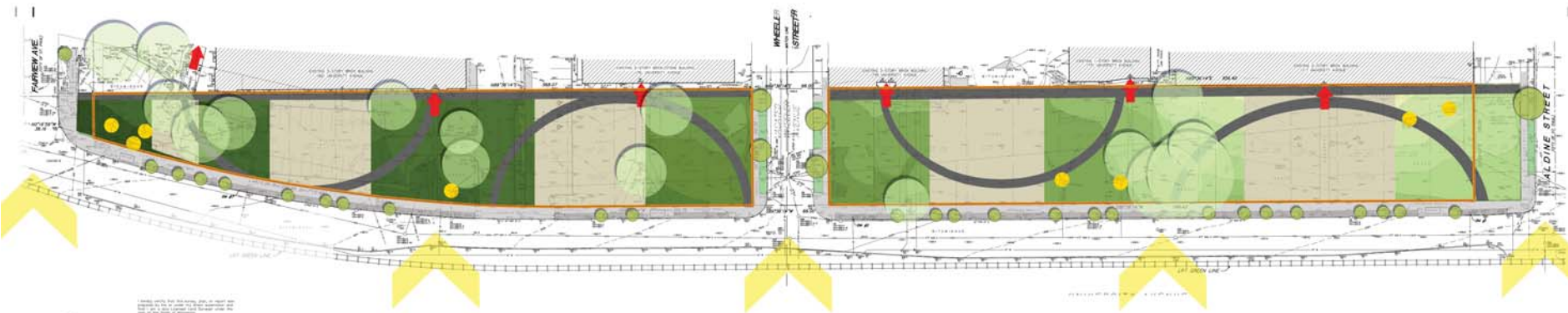
## CONCEPT 1

Design Advisory Committee Meeting #2

October 23, 2014

# DICKERMAN PARK

Saint Paul Parks and Recreation



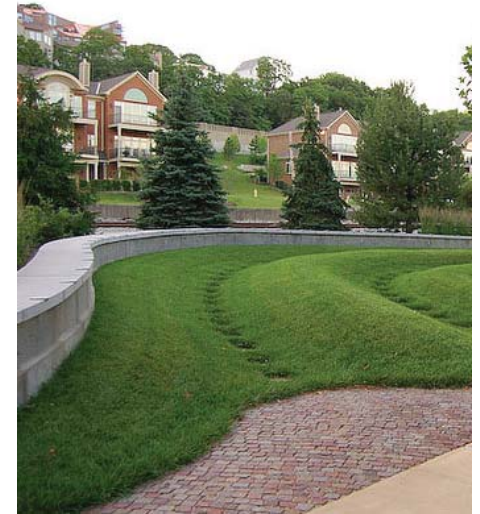
## CONCEPT 1

Design Advisory Committee Meeting #2  
October 23, 2014

# DICKERMAN PARK

Saint Paul Parks and Recreation





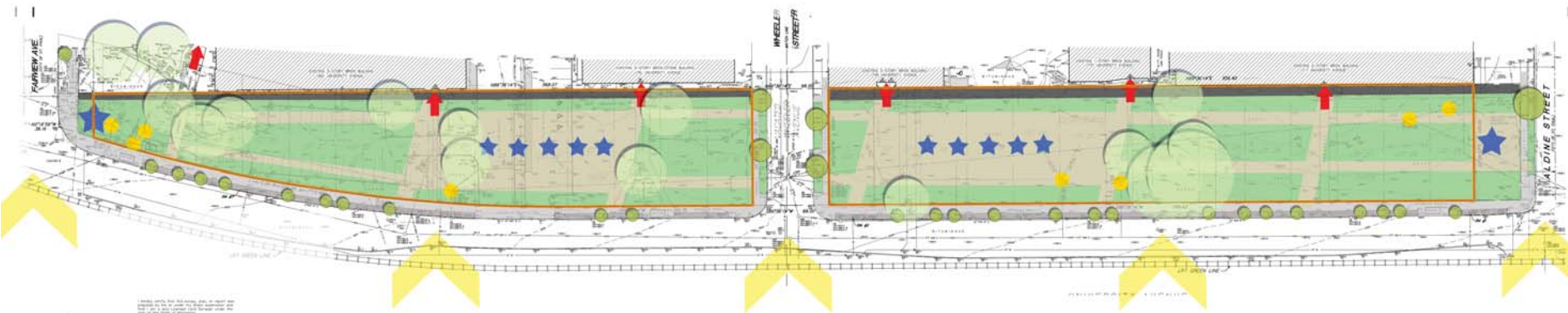
**CONCEPT 1**  
Design Advisory Committee Meeting #2  
October 23, 2014

**DICKERMAN PARK**

Saint Paul Parks and Recreation







## CONCEPT 2

Design Advisory Committee Meeting #2  
October 23, 2014

# DICKERMAN PARK

Saint Paul Parks and Recreation





## CONCEPT 2

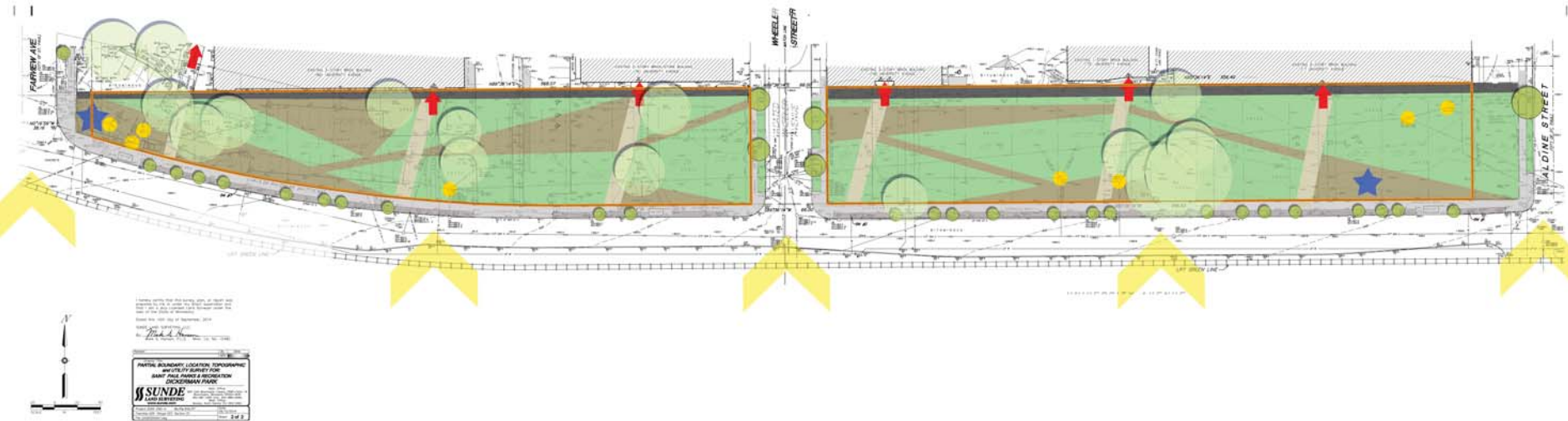
Design Advisory Committee Meeting #2  
October 23, 2014

# DICKERMAN PARK

Saint Paul Parks and Recreation







## CONCEPT 3

Design Advisory Committee Meeting #2  
October 23, 2014

# DICKERMAN PARK

Saint Paul Parks and Recreation





## CONCEPT 3

Design Advisory Committee Meeting #2

October 23, 2014

# DICKERMAN PARK

Saint Paul Parks and Recreation



## CONCEPT 4

Design Advisory Committee Meeting #2

October 23, 2014

# DICKERMAN PARK

Saint Paul Parks and Recreation





## CONCEPT 4

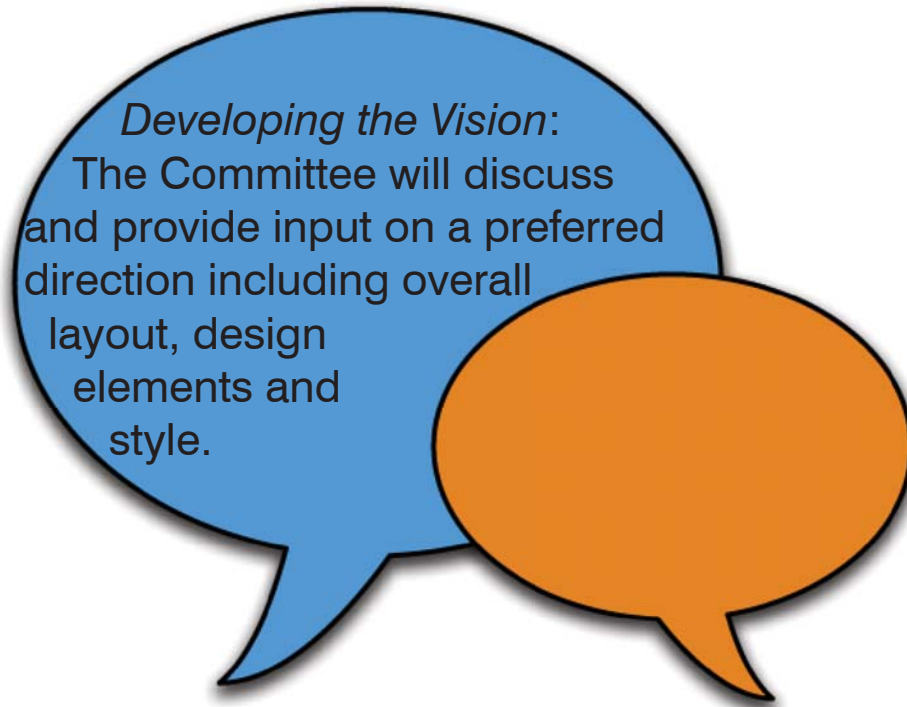
Design Advisory Committee Meeting #2

October 23, 2014

# DICKERMAN PARK

Saint Paul Parks and Recreation

# discussion



*Developing the Vision:*

The Committee will discuss and provide input on a preferred direction including overall layout, design elements and style.

identity  
uses  
amenities  
concerns  
other



# next steps

Design Advisory Committee Meeting #3  
Thursday December 4, 2014

## *Public Open House*

Gather broader public feedback on conceptual designs as developed to date with input of Design Advisory Committee.

Solicit comment and opinion on overall plan direction and prioritization projects within the plan.

