

Hampden Park Design Advisory Committee

Meeting #1
December 18, 2014



Hampden Park Improvements

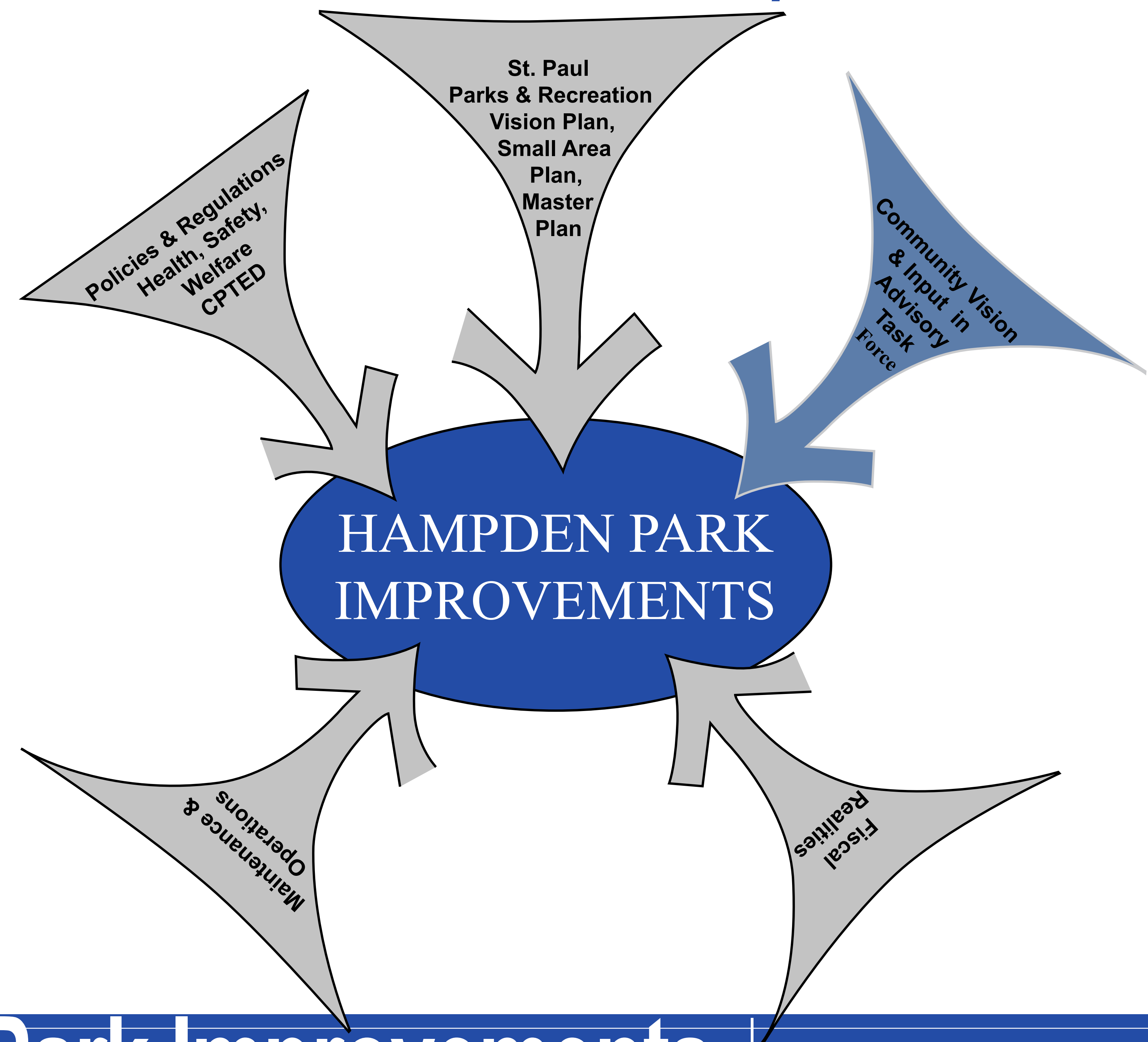
Design Advisory Committee Mtg #1
December 18, 2014



Project Manager : Alice Messer
alice.messer@ci.stpaul.mn.us
651-266-6412

Design Advisory Committee:

*Hampden Park Improvements will be developed
with consideration of multiple factors*



Hampden Park Improvements

Design Advisory Committee Mtg #1
December 18, 2014



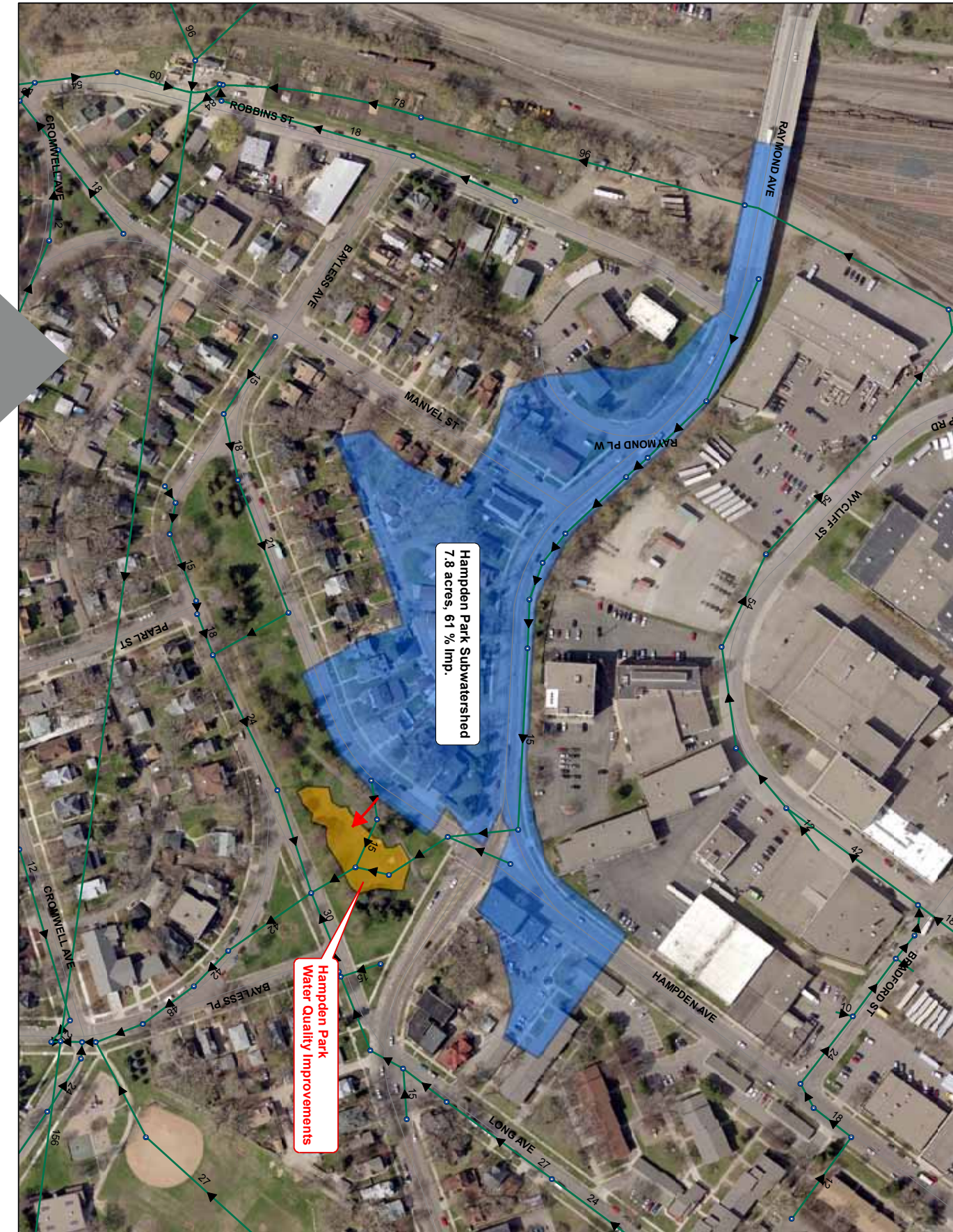
Project Manager : Alice Messer
alice.messer@ci.stpaul.mn.us
651-266-6412

Master Plan



2010 : Master plan developed for Hampden Park.

Stormwater and Roadway Improvements



2013 : Stormwater infiltration basin constructed & Phase I Raymond Avenue/Bayless Avenue RSVP

Current Project



2014 / 2015: Design and construction of Hampden Park Improvements. Includes construction of plaza, native planting, tree replacement, site amenities and public art.
Funding :

Total Funds : \$200,000
Construction Budget : \$155,000 - \$165,000

Anticipated Schedule:

DAC Mtg #1 : December 18, 2014
DAC Mtg # 2 : January 15, 2015
Community Open House : January 27, 2015
Construction Drawings: Feb - March 2015
Advertise Project: April - June 2015
Construction : August - October 2015



Hampden Park Improvements

Project Summary

Design Advisory Committee Mtg #1
December 18, 2014



Project Manager : Alice Messer
alice.messer@ci.stpaul.mn.us
651-266-6412

Site Analysis

*Neighborhood Context
Existing Conditions
Opportunities and Constraints*



Hampden Park Improvements

Design Advisory Committee Mtg #1
December 18, 2014



Project Manager : Alice Messer
alice.messer@ci.stpaul.mn.us
651-266-6412



Engine House #13 - constructed in 1894



Hampden Park Co-Op (Formerly International Organization of Odd Fellows (I.O.O.F)) - constructed in 1902

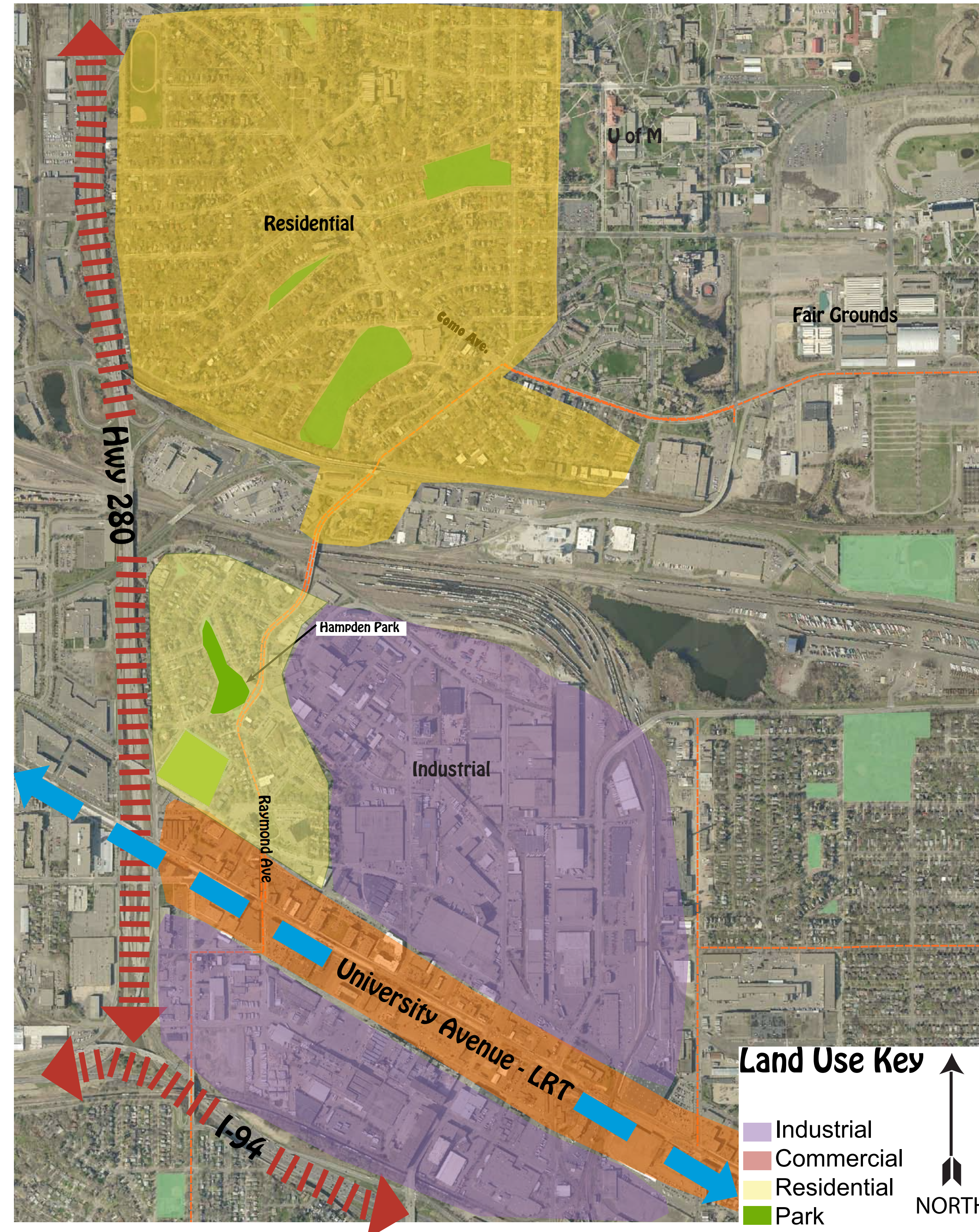


Commercial Properties along Raymond Avenue



New housing along University Avenue at Raymond Station

Land Use



Demographics

Age Range:

10% - 65 and older
14.8% - 17 and younger
75.2% - 18 - 64 years

Year built

44.0% - built 1939 or earlier

Housing Units

91.5% Occupied housing units
8.5% Vacant

Race and Ethnicity:

76.3% - White
Of Color
11.1% - Asian or Pacific islander
6.6% - Black or African American
3.1% - two or more races
2.1% - Hispanic or Latino

Vehicles per household:

12.1% - no vehicle
42.9% - 1 vehicle
35.6% - 2 vehicles

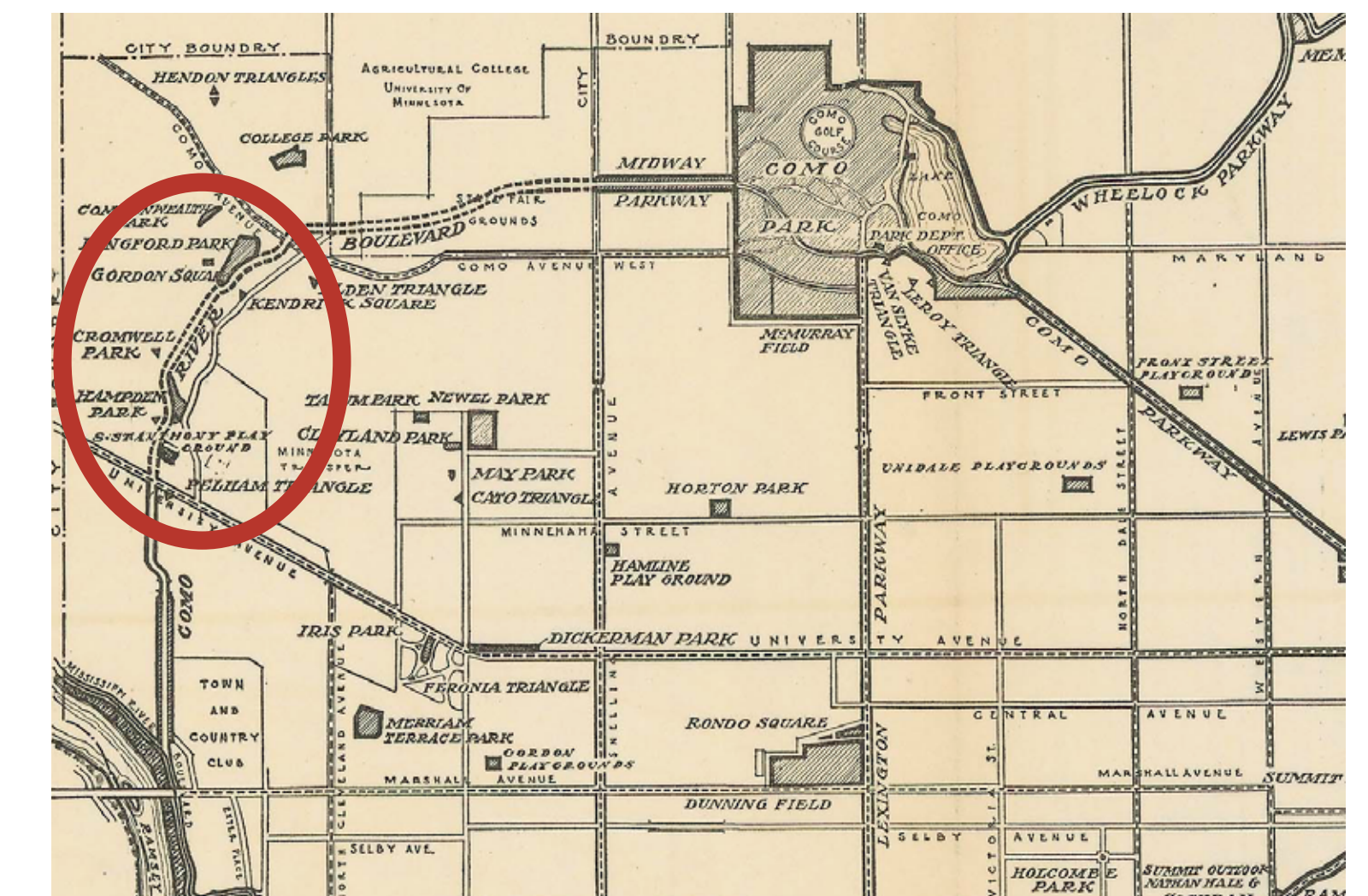
14.8% - Foreign born

Language:

81.5% - English

Residence

3,601 housing units
54.2% non family household
45.8% family households
20.6% with children under 18 years



St. Paul Park System 1929 - Horace S. Cleveland
(Minnesota State Historical Society)



Hampden Park Improvements

Neighborhood Context

Design Advisory Committee Mtg #1
December 18, 2014



Project Manager : Alice Messer
alice.messer@ci.stpaul.mn.us
651-266-6412



Existing Site Amenities

- Outdated, poor condition and need to replace
- Street lighting to be replaced with RSVP project

Catch Basins

- Stubs constructed for future stormwater treatment in conjunction with Bayless Avenue Improvements

Sumac Cluster

- Only shrubs within park

Rain Garden

- Constructed as part of RSVP project in 2013
- Treats storm water from Raymond Avenue
- Maintained by PW Sewers

Southern Park Entrance

- Sidewalk connection along edge of park
- No signage identifying park

Open Space

- Remains from old street alignment
- Views of Raymond Avenue



Open Space

- Surrounded by mature trees (140)

Existing Path

- Single 8' wide path
- No lighting
- 3 benches

Existing Open Space

- Stormwater treatment below ground
- Grass to remain - no trees planted above
- Access to manholes required for maintenance

Existing Oaks (3)

- Protect existing oaks (32" diameter)
- No grading under tree canopy

Main access point into park

- Existing trail through park
- Existing Route 84 bus stop
- Across from Co-op
- Good pedestrian connections across Raymond Avenue
- No signage identifying park

Northern Park Entrance

- No sidewalk/trail connection
- Mature evergreen trees



Existing Trees

- Protect and replace trees as needed



Hampden Park Improvements

Existing Conditions

Design Advisory Committee Mtg #1
December 18, 2014



Project Manager : Alice Messer
alice.messer@ci.stpaul.mn.us
651-266-6412



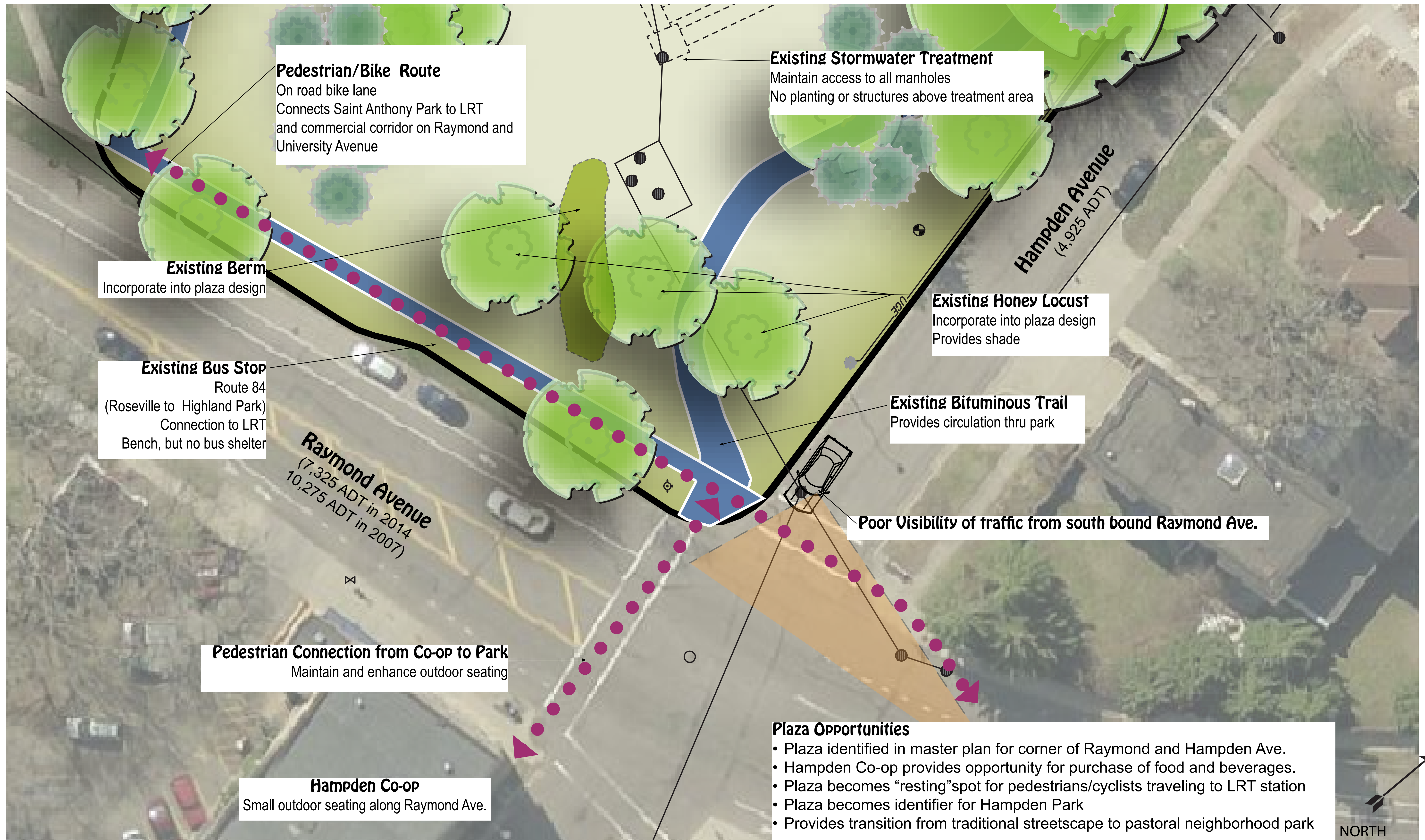
Hampden Park Improvements

Opportunities/Constraints

Design Advisory Committee Mtg #1
December 18, 2014



Project Manager : Alice Messer
alice.messer@ci.stpaul.mn.us
651-266-6412



Hampden Park Improvements

Site Analysis - Plaza Area

Design Advisory Committee Mtg #1
December 18, 2014



Project Manager : Alice Messer
alice.messer@ci.stpaul.mn.us
651-266-6412

Design Styles

*Natural Systems
Traditional Neighborhood
Urban/Transit*



Hampden Park Improvements

Design Advisory Committee Mtg #1
December 18, 2014



Project Manager : Alice Messer
alice.messer@ci.stpaul.mn.us
651-266-6412

Natural Systems

Stormwater management, natural materials (stone, wood, plants), native plants for habitat, interactive public art, LED lighting, organic forms ...



Hampden Park Improvements

Design Styles

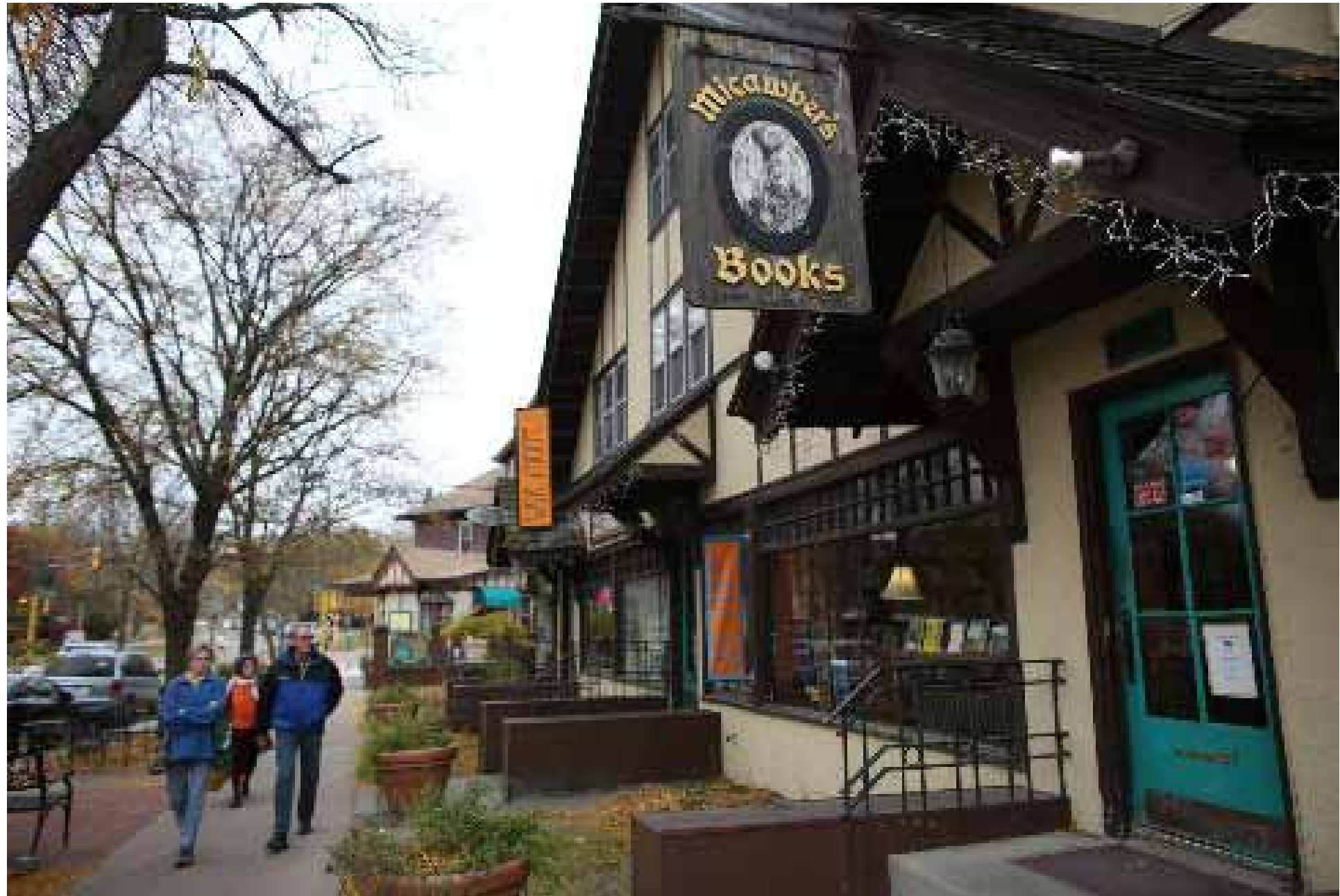
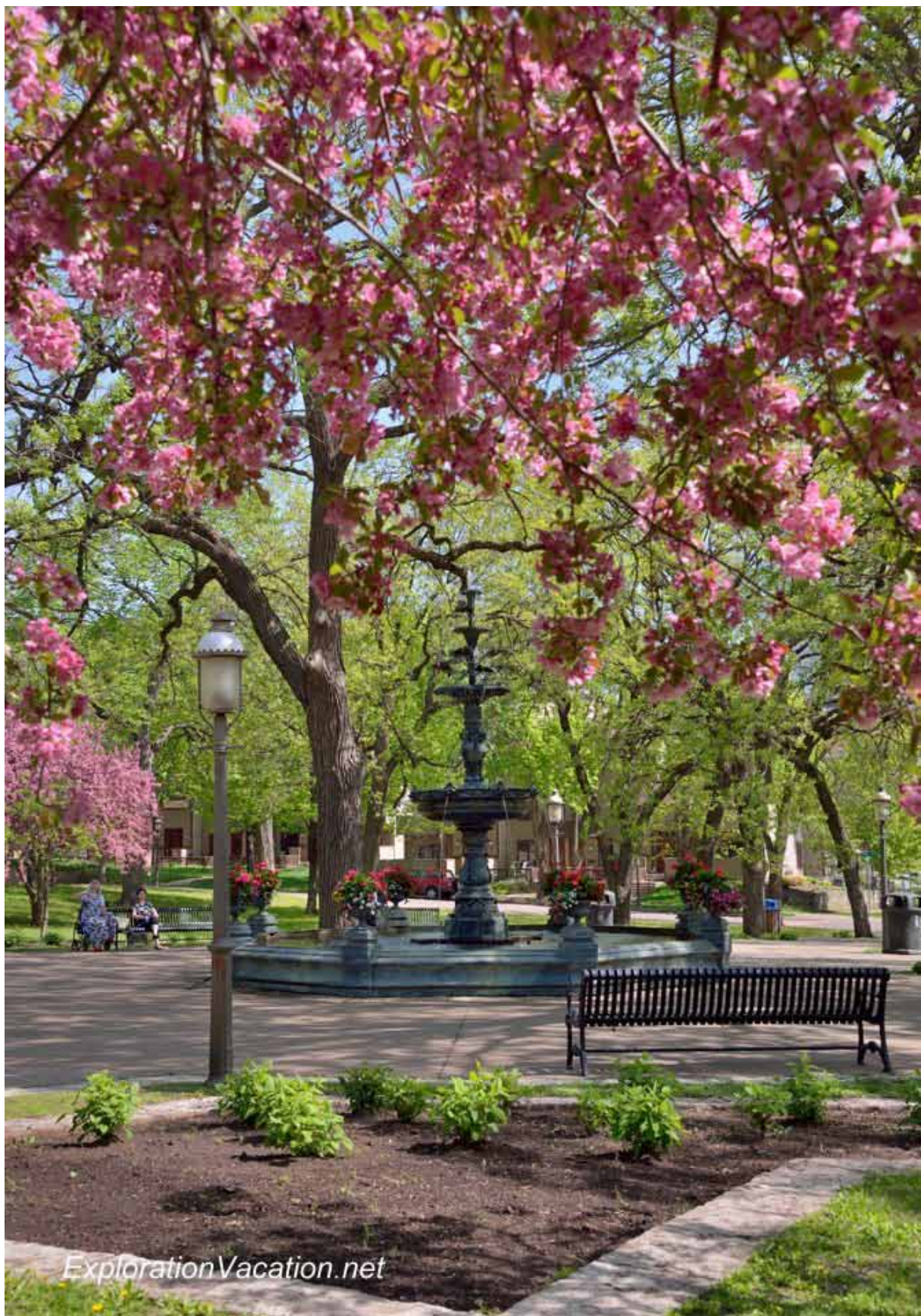
Design Advisory Committee Mtg #1
December 18, 2014

Saint Paul Parks and Recreation

Project Manager : Alice Messer
alice.messer@ci.stpaul.mn.us
651-266-6412

Traditional Neighborhood

Open lawn, picnic tables, benches, lantern lighting, curvilinear forms ...



Hampden Park Improvements

Design Styles

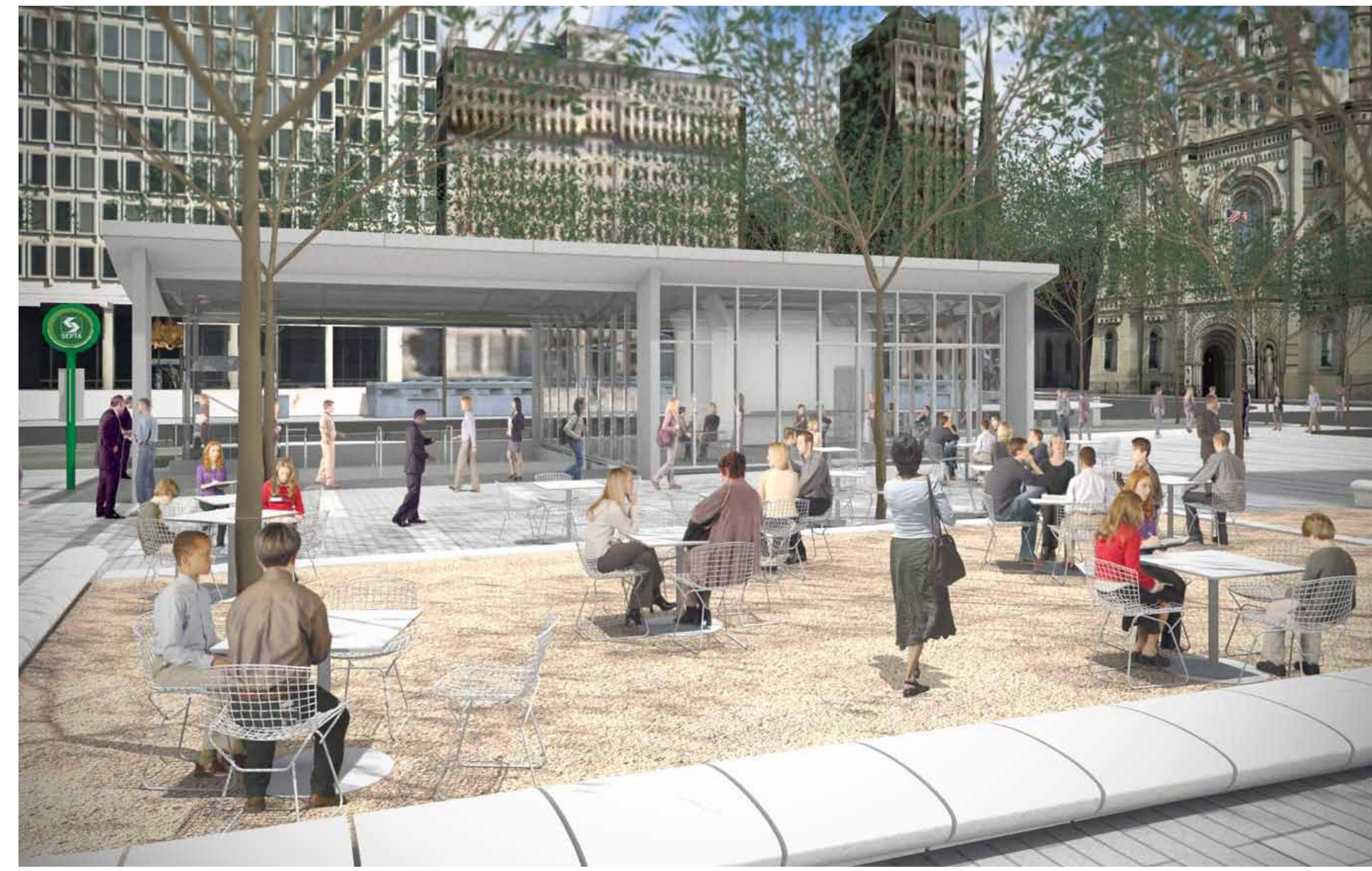
Design Advisory Committee Mtg #1
December 18, 2014

Saint Paul Parks and Recreation

Project Manager : Alice Messer
alice.messer@ci.stpaul.mn.us
651-266-6412

Urban/Transit Oriented

Incorporates all modes of transportation (bus, bike, pedestrians), use of reclaimed street pavers, movable seating, rectilinear design ...



Hampden Park Improvements

Design Styles

Design Advisory Committee Mtg #1
December 18, 2014

Saint Paul Parks and Recreation

Project Manager : Alice Messer
alice.messer@ci.stpaul.mn.us
651-266-6412

Questions/Comments?

Next Meeting :

January 15, 2015
6:00 to 8:00 pm
South Saint Anthony Rec. Center



Hampden Park Improvements

Design Advisory Committee Mtg #1
December 18, 2014



Project Manager : Alice Messer
alice.messer@ci.stpaul.mn.us
651-266-6412