



CITY OF SAINT PAUL
Mayor Christopher B. Coleman

400 City Hall Annex
25 West 4th Street
Saint Paul, Minnesota 55102
www.stpaul.gov/parks

Telephone: 651-266-6400
Facsimile: 651-292-7311

December 5, 2014

“Palace Community Center”
Design Advisory Committee #3 (December 2, 2014)
Meeting Notes

Attendees: Ian Simonson, Kathleen Anglo, Cathy Miller, Mary Morgan, Maggie O’Reilly, Valerie Peterson, Andy Rodriguez, Chris Stark

1. Welcome and Introductions

- 1.1. Welcome and review of Committee Meeting #2 and the Design Open House**
Comments; many comments were marked on sticky notes and applied by participants to design presentation boards. Comments included:
- 1.1.1.** Community’s desire to fully screen existing ice rink mechanical unit, integrated with the building design
 - 1.1.2.** Adding a walking track at the interior
 - 1.1.2.1.** Not feasible due to budget, accessibility and scope of the project
 - 1.1.2.2.** Andy suggested having a designated walking time for the gym as done at other facilities.
 - 1.1.3.** The ‘modern look’ of the building is a positive.
- 1.2. Current phase of project is Construction Documents (DD) – creating the details, refining the drawings so they can be accurately estimated and built.**

2. Building Design Progress (Ian)

- Interior design perspectives, restroom tile pattern options, interior floor pattern options, and interior materials reviewed and discussed.
- 2.1. Team walks through floor plan, minor modifications since last meeting include storage additions and changes to built-in, tiered seating**
- 2.1.1.** Pantry has been added to the kitchen area
 - 2.1.2.** Partition between senior-craft room/fitness room: tackable/tapeable surface would be useful; TV monitors on the fitness side
 - 2.1.3.** Electrical outlets, USB & data ports will be strategically placed to allow visitors to plug in and connect.
 - 2.1.3.1.** Committee prefers exposed conduit with painted block wall, in lieu of furring out the wall. Conduit should be placed strategically to complement design.
 - 2.1.4.** Design team should accommodate power for 2 vending machines
 - 2.1.5.** Trophy cases are suggested, enough to celebrate Palace but not enough that will allow for spaces to look cluttered.

Attached: Drawings and PowerPoint presented at the meeting.



Palace Community Center

Expansion & Renovation
Design Advisory Committee

Meeting #3
December 2nd, 2014

Agenda

- I. Welcome
- II. Meeting #2 & Open House Review
- III. Building Interior Materials
- IV. Future Community Design
Involvement Possibilities
- V. Questions and Discussion



Project Process & Schedule

PALACE RECREATION CENTER



RENOVATION AND EXPANSION

DESIGN OPEN HOUSE **TUESDAY** **OCTOBER 28TH, 6PM**
781 PALACE AVE. ST. PAUL, MN 55102

Saint Paul Parks and Recreation

LSE ARCHITECTS

Community Process to Date

Design Advisory Committee #1	09/30/14
Design Advisory Committee #2	10/22/14
Design Open House #1	10/28/14
Design Advisory Committee #3	12/02/14
Design Open House #2	01/13/15

Design Process (Draft) Date

Schematic Design	09/30/14
Design Development	11/09/14
Construction Documents	01/13/15
Construction Begins	2015

Meeting #2 and Open House

Design Advisory Meeting #2

- Review of Goals
- Building Aesthetic & Massing
- Exterior Materials
- Site Design, Play Area

October Open House

- Process to Date
- Building Design
- Post-it comments, questions



Sticky-Note Comments & Suggestions

Site

It Rocks



No barbed
wire!
AROUND CHILLER

Full
SCREEN WALL
AT CHILLERS

• noise
• visual

~~NO~~ VIDEO SHOWS
NO → RAILING & 1/2 WALL

Love it,
outdoor shade
seating

Sticky-Note Comments & Suggestions

Play Area

Move
lighting
and
security
cameras

No
Artificial
Turf
but what?? &

Can we have
Baby swings?
(most nearby
play grounds only
have swings for
older kids)

toddler-
friendly
equipment (& surface)
please!

Themed
play

Net play

Sticky-Note Comments & Suggestions

Exterior

H2O/stor/stor
Roof can be getting of
the mansard.

Outdoor storage
Plenty of room
for sweeper/
mowers, etc
more than
one

NO
"COLORED" / TINTED
GLASS
- PATTERN/DESIGN OK tho

Love the
modern look

Sticky-Note Comments & Suggestions

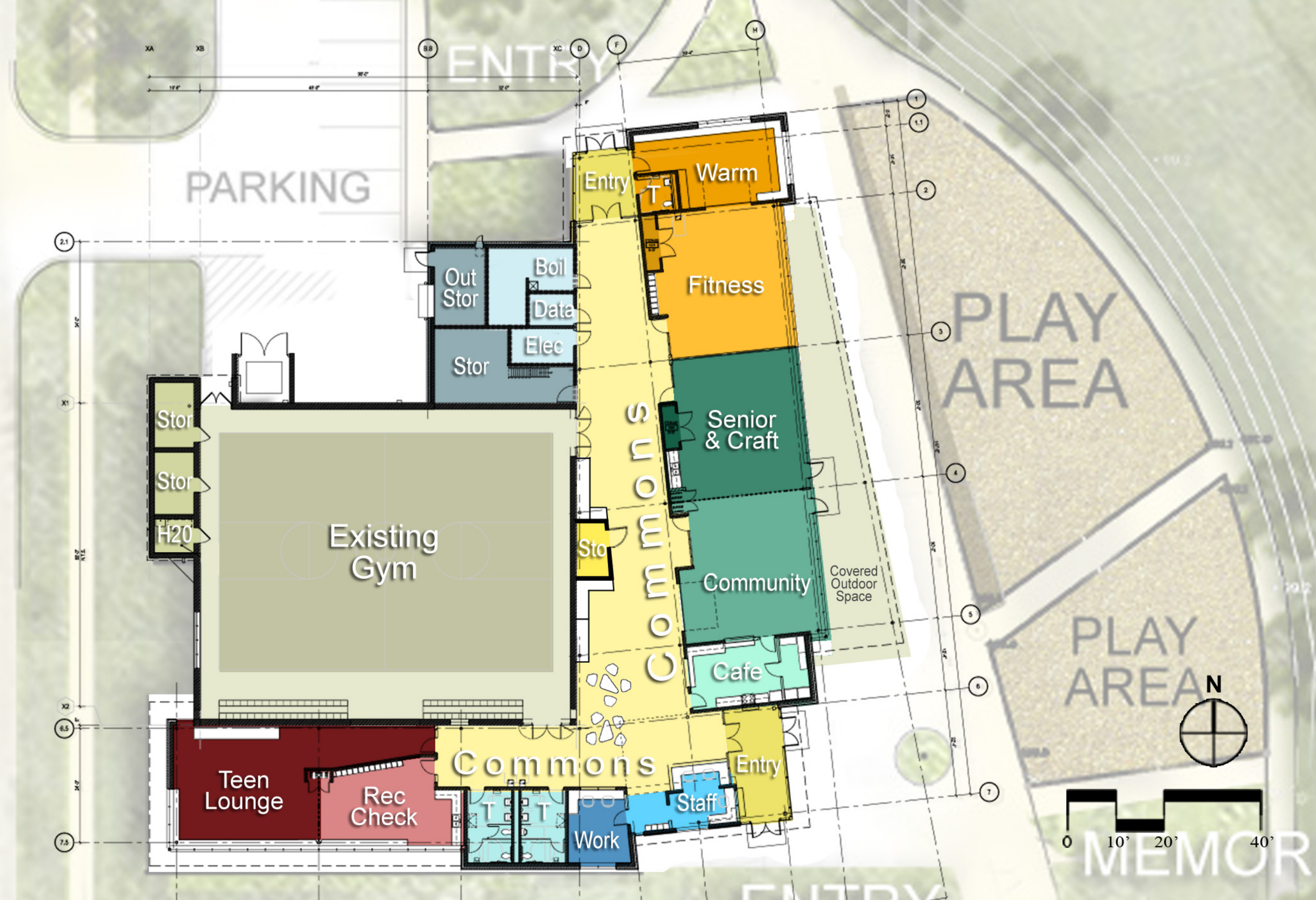
Interior

UNCONVINCED
THAT CUBBIES IN
COMMON SPACE IS
USEFUL.

Keep Commons
~~Room~~ Clean.
It looks cluttered
w/ the cubbie seating
Keep seating informal rather

Can We have an
Indoor walking track
ala Northdale -
Hillcrest. ?
Ring in the gym

NICE VIEW
CORRIDOR!





Palace Community Center

Saint Paul, Minnesota

Schematic
Imagery





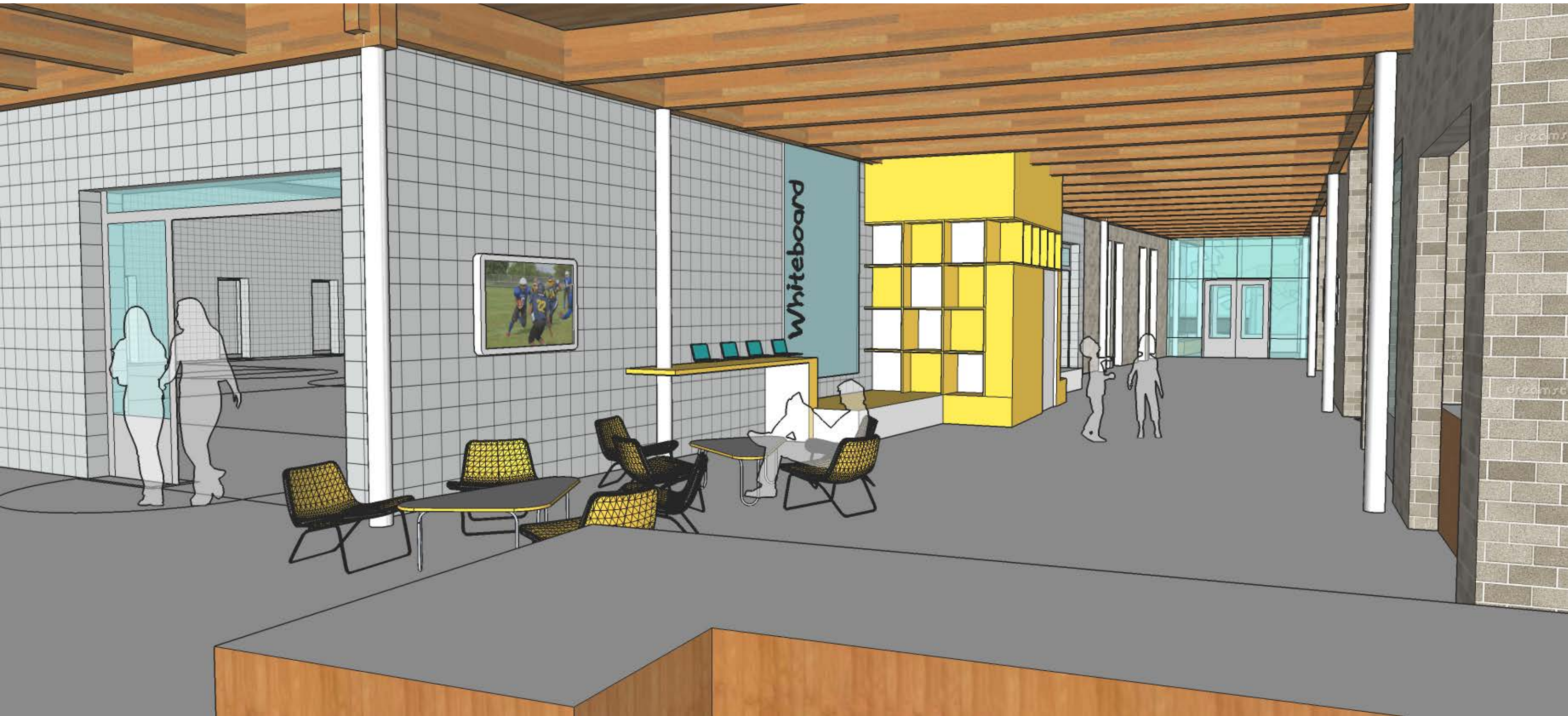


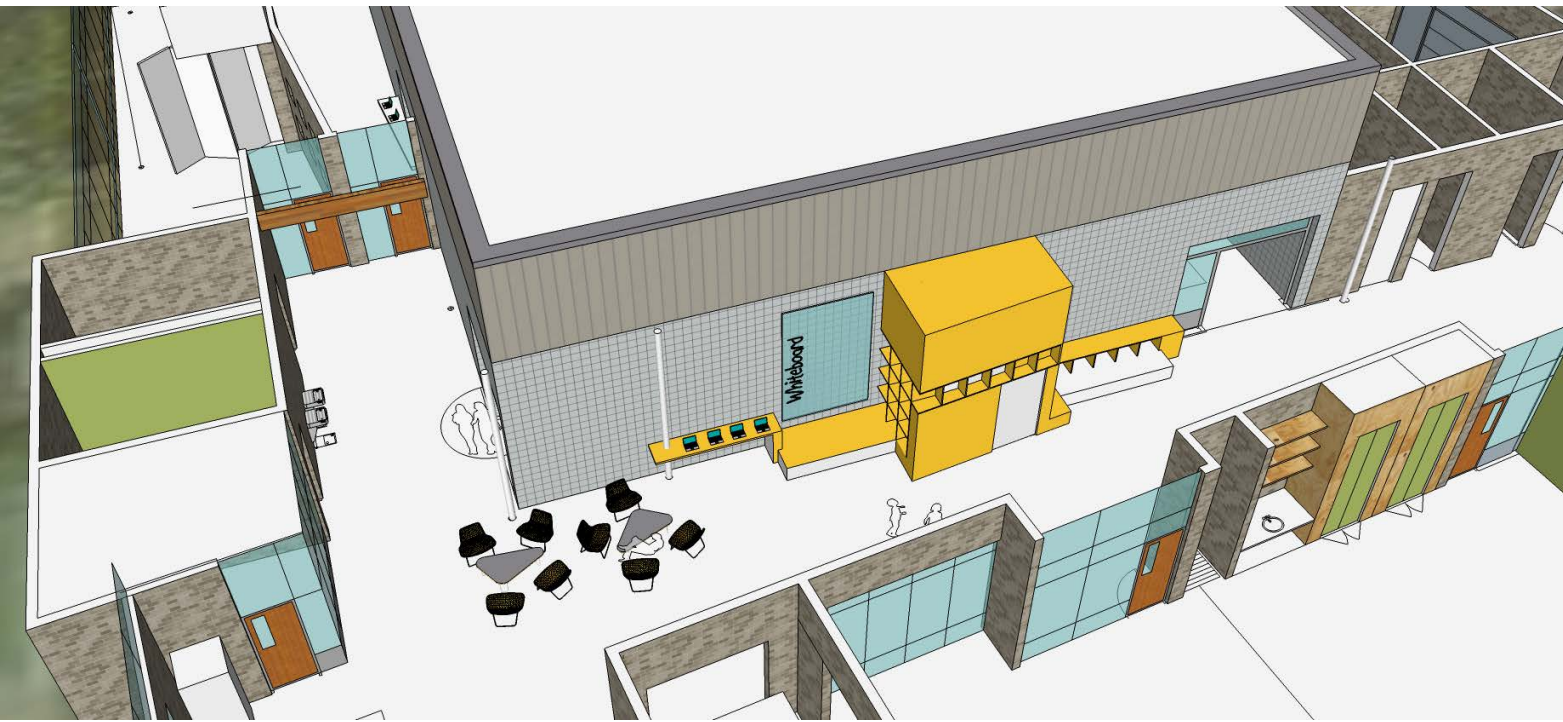
Palace Community Center

Saint Paul, Minnesota

Schematic
Imagery







Palace Community Center

Saint Paul, Minnesota

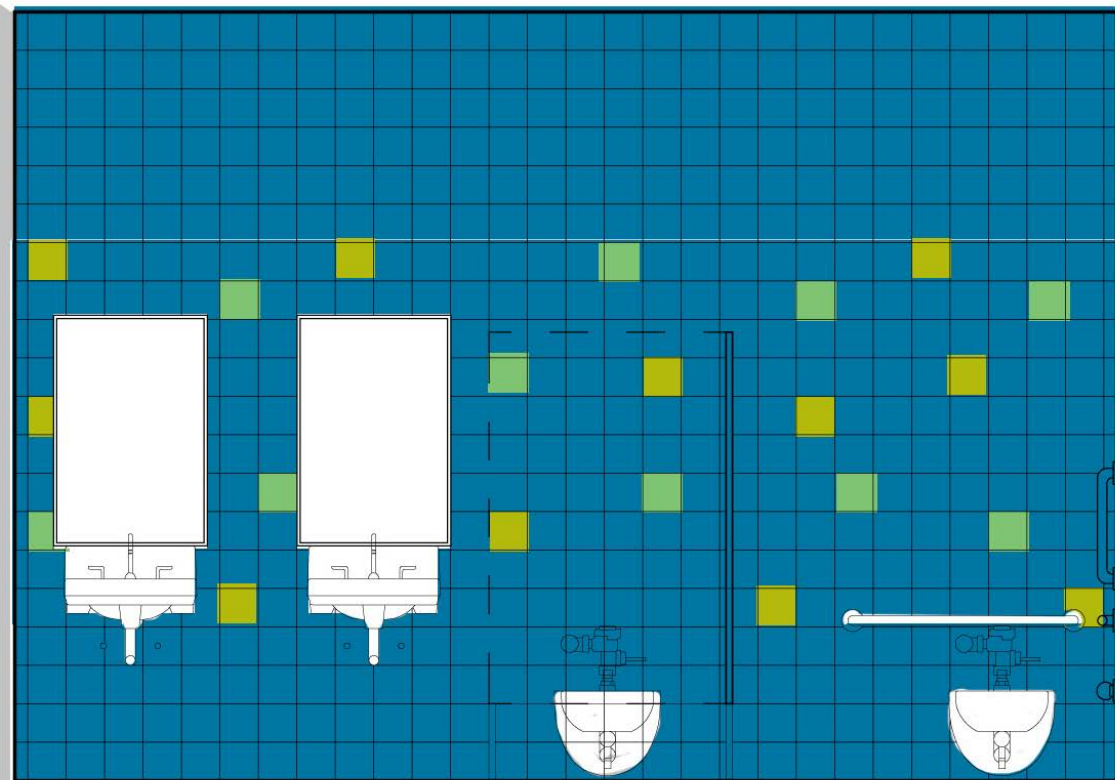
Schematic
Imagery



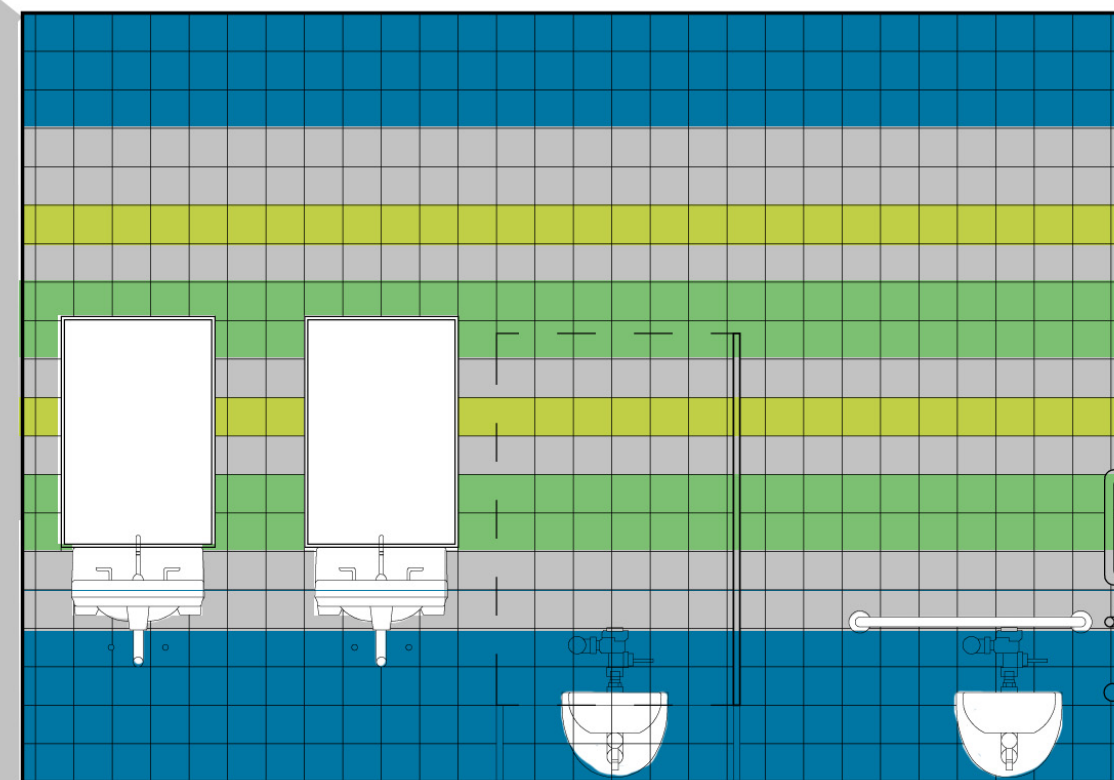
Floor Pattern Option A



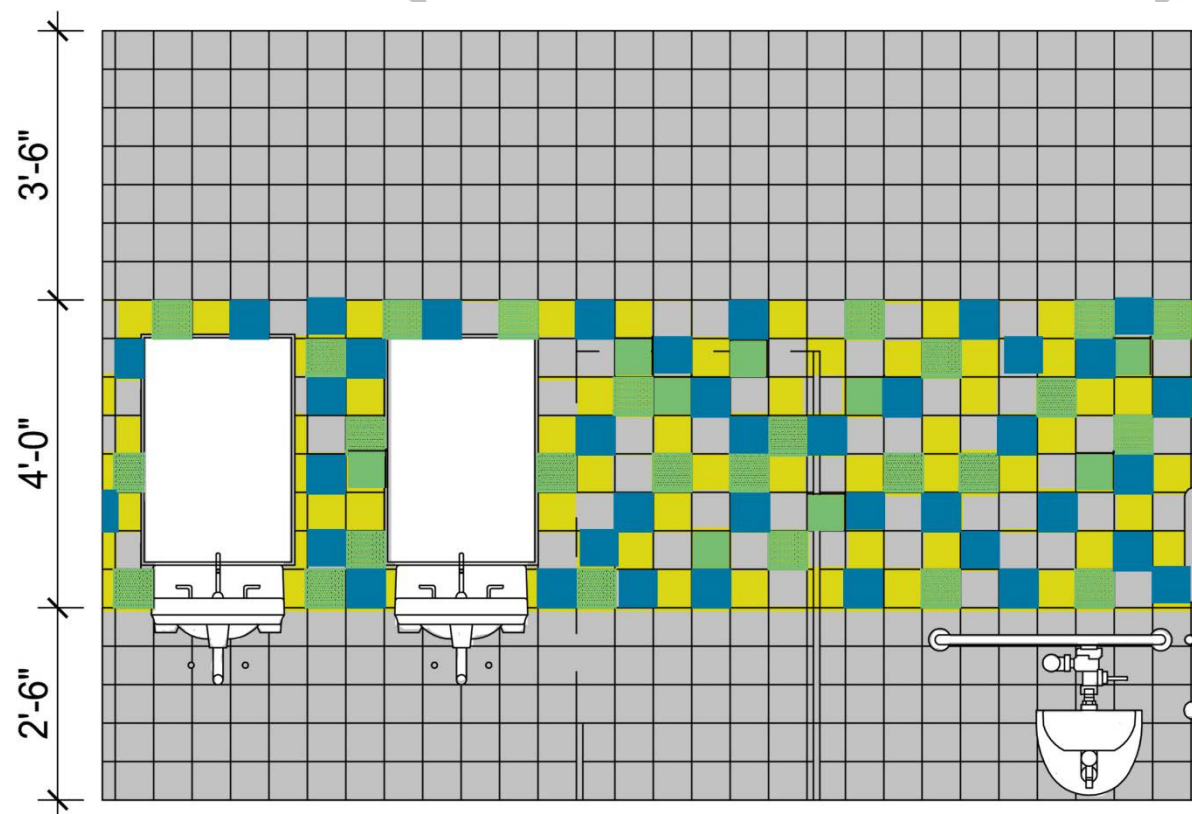
Floor Pattern Plan Option B



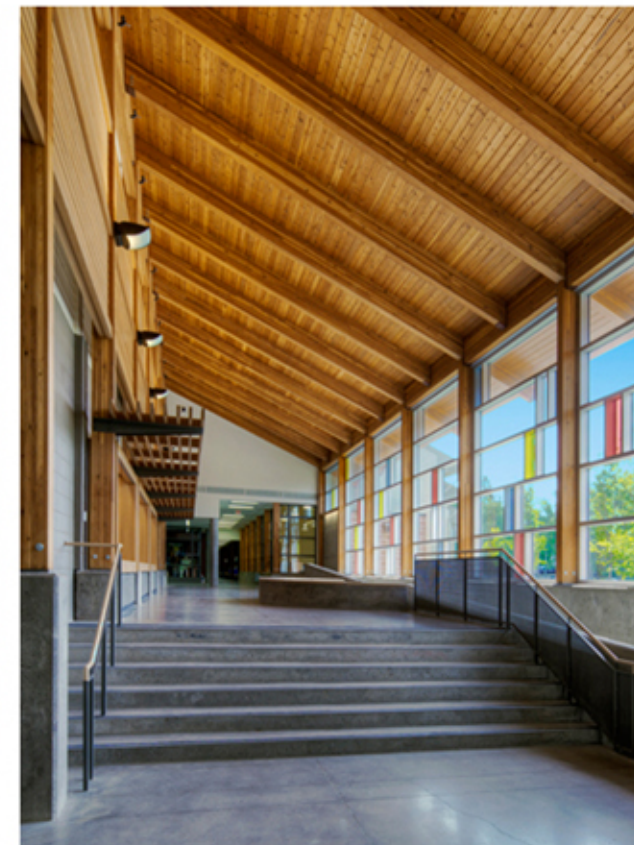
Toilet Room Elevation Option A



Toilet Elevation Option C



Toilet Room Elevation Option B



Palace Community Center

Saint Paul, Minnesota

Proposed
Site Plan





View from South East

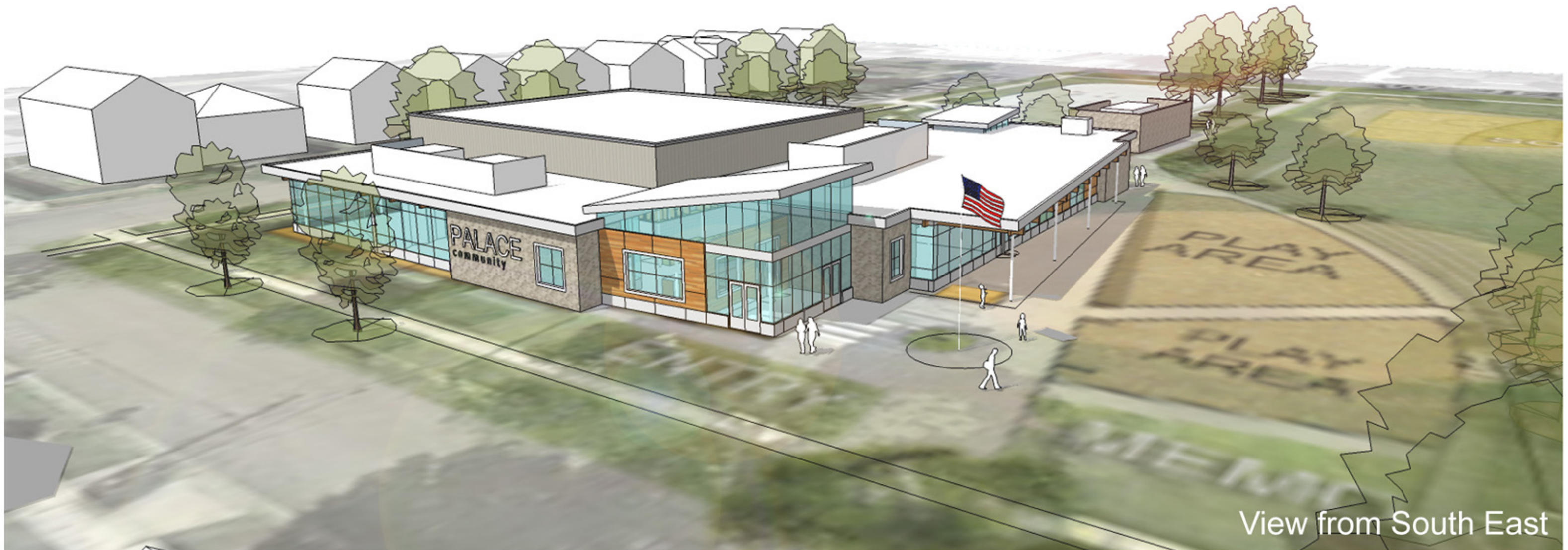


Palace Community Center

Saint Paul, Minnesota

Schematic
Imagery



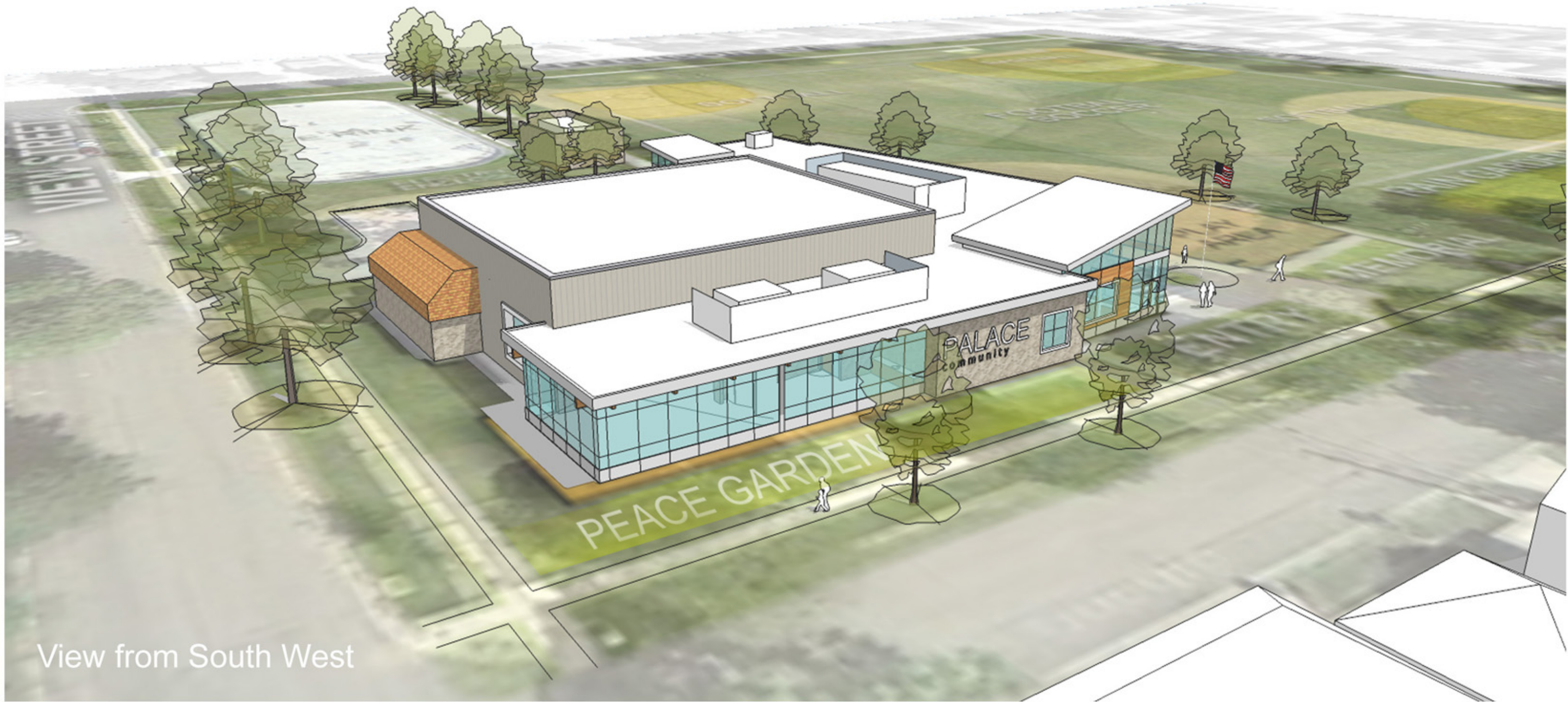


Palace Community Center

Saint Paul, Minnesota

Schematic
Imagery





View from South West



Palace Community Center

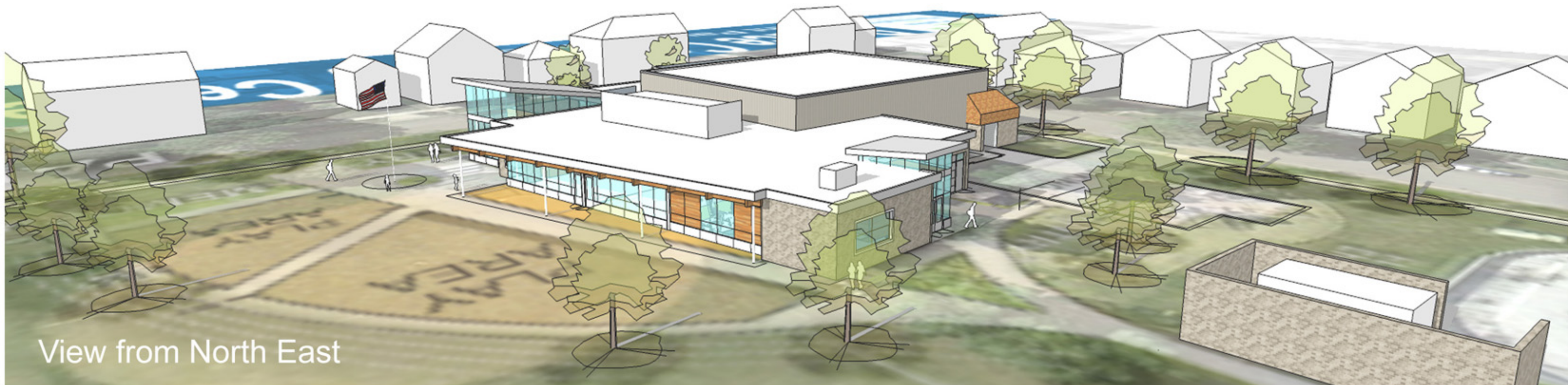
Saint Paul, Minnesota

Schematic
Imagery





View from South West



View from North East



Palace Community Center

Saint Paul, Minnesota

Schematic
Imagery



Thank You!

Project Website:

<http://www.ci.stpaul.mn.us/index.aspx?NID=2907>

Chris Stark, AIA, LEED AP
400 City Hall Annex, 25 West 4th St
Saint Paul, MN 55102
christopher.stark@ci.stpaul.mn.us
651-266-6419