

# Hampden Park Design Advisory Committee

Meeting #2  
January 15, 2015



## Hampden Park Improvements

Design Advisory Committee Mtg #2  
January 15, 2015



Project Manager : Alice Messer  
alice.messer@ci.stpaul.mn.us  
651-266-6412

# Recap from Mtg#1



## Hampden Park Improvements

Design Advisory Committee Mtg #2  
January 15, 2015

  
Project Manager : Alice Messer  
[alice.messer@ci.stpaul.mn.us](mailto:alice.messer@ci.stpaul.mn.us)  
651-266-6412





# Hampden Park Improvements

## Opportunities/Constraints

Design Advisory Committee Mtg #2  
January 15, 2015



Project Manager : Alice Messer  
alice.messer@ci.stpaul.mn.us  
651-266-6412



# General Direction provided from Mtg #1

1. Create a more “dynamic” park. Diversity in plant materials and park experience.
2. Utilize pollinator friendly plants.
3. Incorporate Grand Rounds into plaza design.
4. Integrate honey locust trees into plaza design for shade.
5. Identify park with signage.
6. Provide variety of seating options within park.
7. Utilize high quality materials.



## Hampden Park Improvements

Design Advisory Committee Mtg #2  
January 15, 2015

  
Project Manager : Alice Messer  
alice.messer@ci.stpaul.mn.us  
651-266-6412

# Concepts



## Hampden Park Improvements

Design Advisory Committee Mtg #2  
January 15, 2015



Project Manager : Alice Messer  
[alice.messer@ci.stpaul.mn.us](mailto:alice.messer@ci.stpaul.mn.us)  
651-266-6412



# Overall



## Hampden Park Improvements

Concept 1

Design Advisory Committee Mtg #2  
January 15, 2015

Saint Paul Parks and Recreation

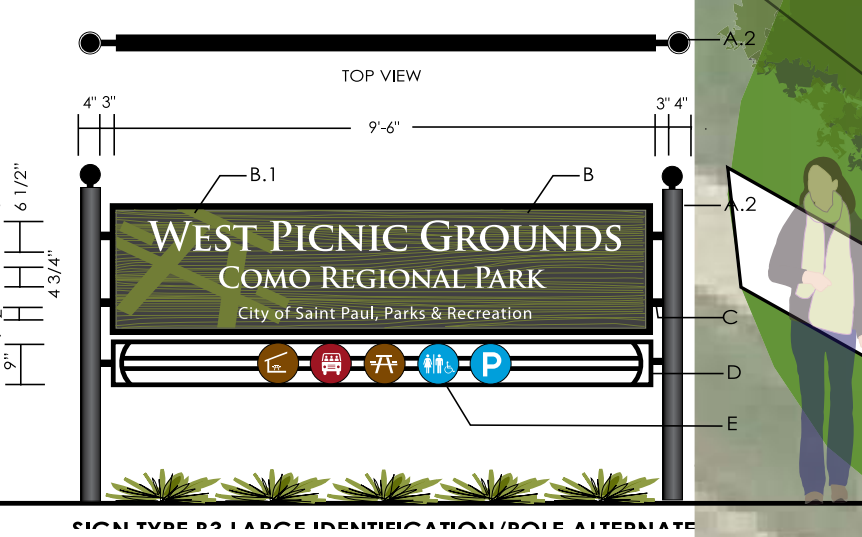
Project Manager : Alice Messer  
alice.messer@ci.stpaul.mn.us  
651-266-6412



Bike repair station



Standard park signage



Bike rack

Drinking fountain

Raised planting bed with benches/seating incorporated



Lawn around existing honey locust trees

Picnic table (movable)



Plantings area define gathering areas - creates internal plaza space

Wall defines plaza space and provides seating



2 sided Grand Round kiosk



Plaza (3,290 sf)



# Hampden Park Improvements

Concept 1

Design Advisory Committee Mtg #2  
January 15, 2015

Saint Paul Parks and Recreation

Project Manager : Alice Messer  
alice.messer@ci.stpaul.mn.us  
651-266-6412



# Overall



## Hampden Park Improvements

Concept 2

Design Advisory Committee Mtg #2  
January 15, 2015



Project Manager : Alice Messer  
alice.messer@ci.stpaul.mn.us  
651-266-6412





Planting bed incorporated existing honey locust trees and defines plaza

Park sign



4 sided Grand Round kiosk



Existing bus stop

Crushed aggregate around existing honey locust - allows for seating within park

Picnic table

Movable chairs

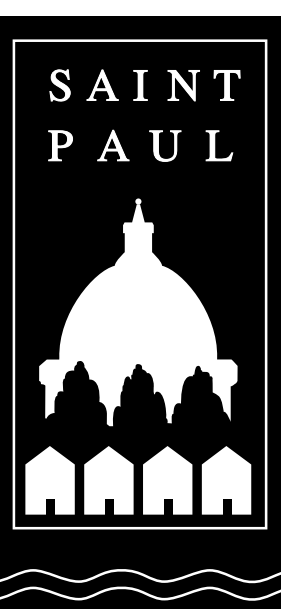


Vertical park element incorporated into plaza

Seat wall allows for views into park or views of street



Plaza (2,630 sf paving + 670 sf crushed gravel)



# Hampden Park Improvements

Concept 2

Design Advisory Committee Mtg #2  
January 15, 2015

Saint Paul Parks and Recreation

Project Manager : Alice Messer  
alice.messer@ci.stpaul.mn.us  
651-266-6412



# Overall



# Hampden Park Improvements

Concept 3

Design Advisory Committee Mtg #2  
January 15, 2015



Project Manager : Alice Messer  
alice.messer@ci.stpaul.mn.us  
651-266-6412

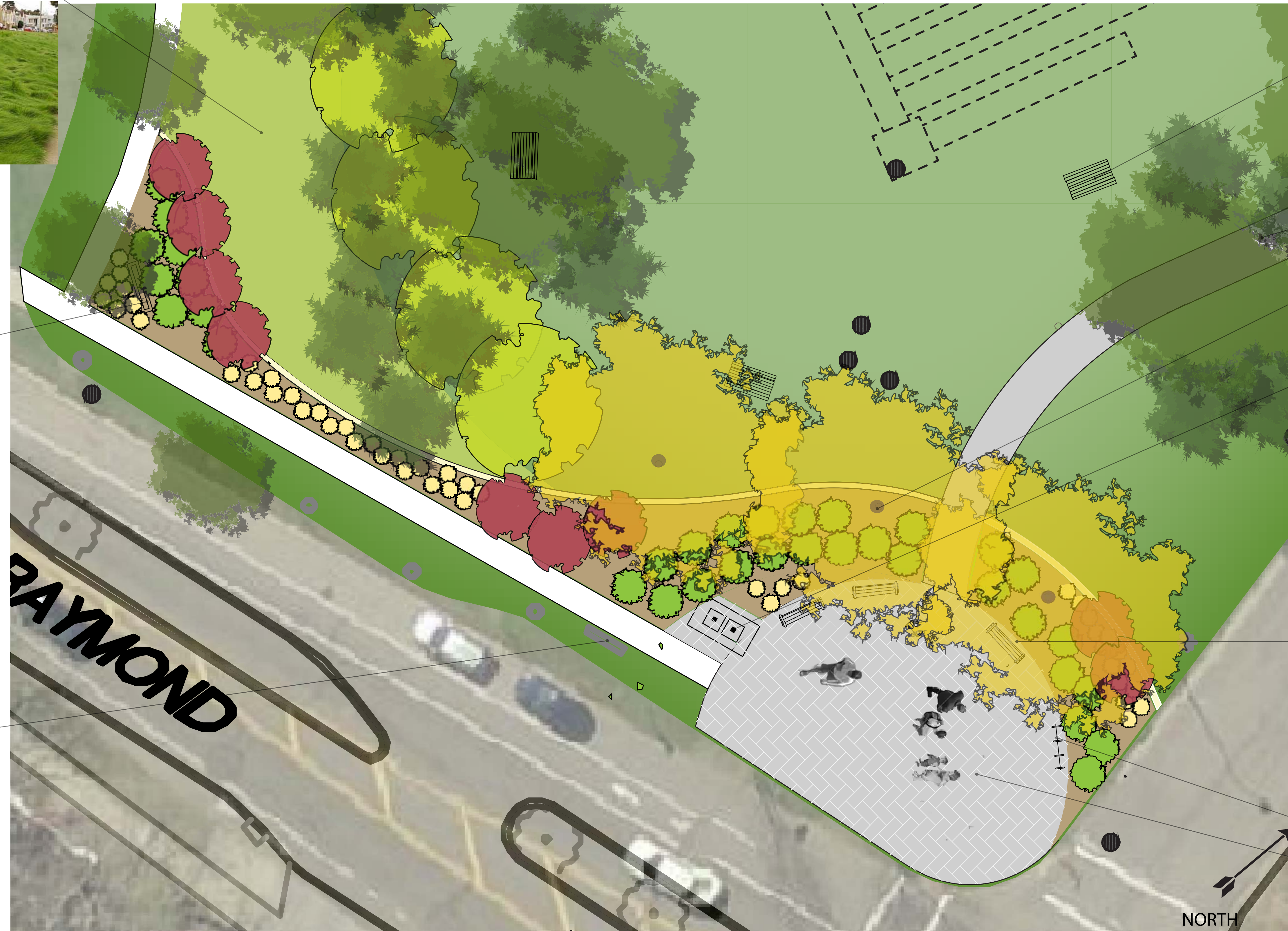


No mow fescue grass



Park sign

Existing bus stop



Picnic table - reclaimed ash trees



New path

Planting area behind plaza incorporates existing honey locust trees

2 sided Grand Round kiosk



Bench typ.



Bike rack

Plaza (2,363 sf)



# Hampden Park Improvements

Concept 3

Design Advisory Committee Mtg #2  
January 15, 2015

Saint Paul Parks and Recreation

Project Manager : Alice Messer  
alice.messer@ci.stpaul.mn.us  
651-266-6412



# Pollinators in Hampden Park

(Information from Xerces Society)



Native flowing plants



Serviceberry



Red-osier dogwood



Crabapples



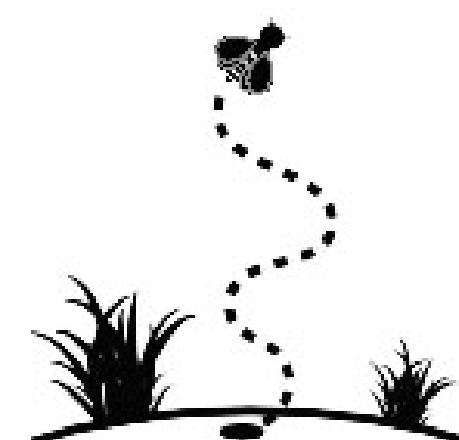
Sumac (fragrant)



Spiraea



Lilacs



Create nesting sites



Avoid using pesticides

Specify local nurseries that supply native seed such as:  
Feder Prairie Seed

Minnesota Native Landscapes

Morning Sky Greenery

Prairie Moon Nursery

Out Back Nursery, Inc.



## Hampden Park Improvements

### Pollinators

Design Advisory Committee Mtg #2  
January 15, 2015



Project Manager : Alice Messer  
alice.messer@ci.stpaul.mn.us  
651-266-6412



# Thoughts on Public Art opportunities

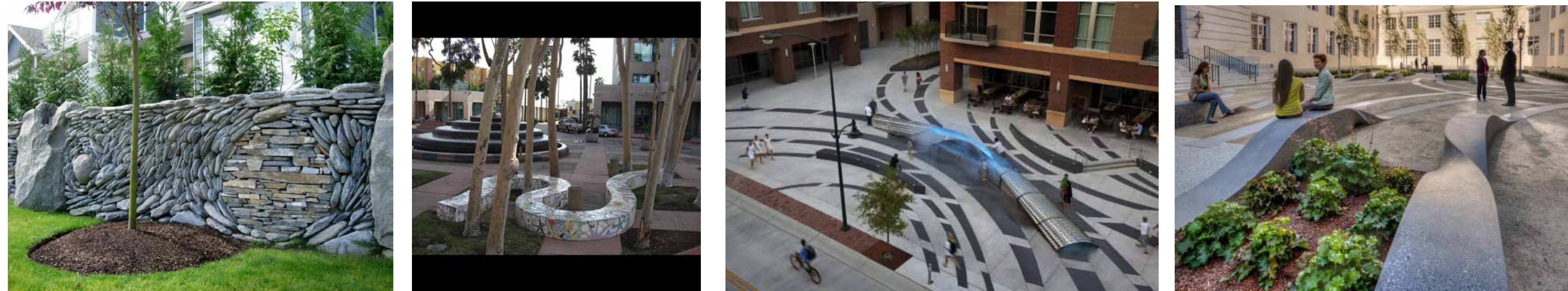
## LIGHTING



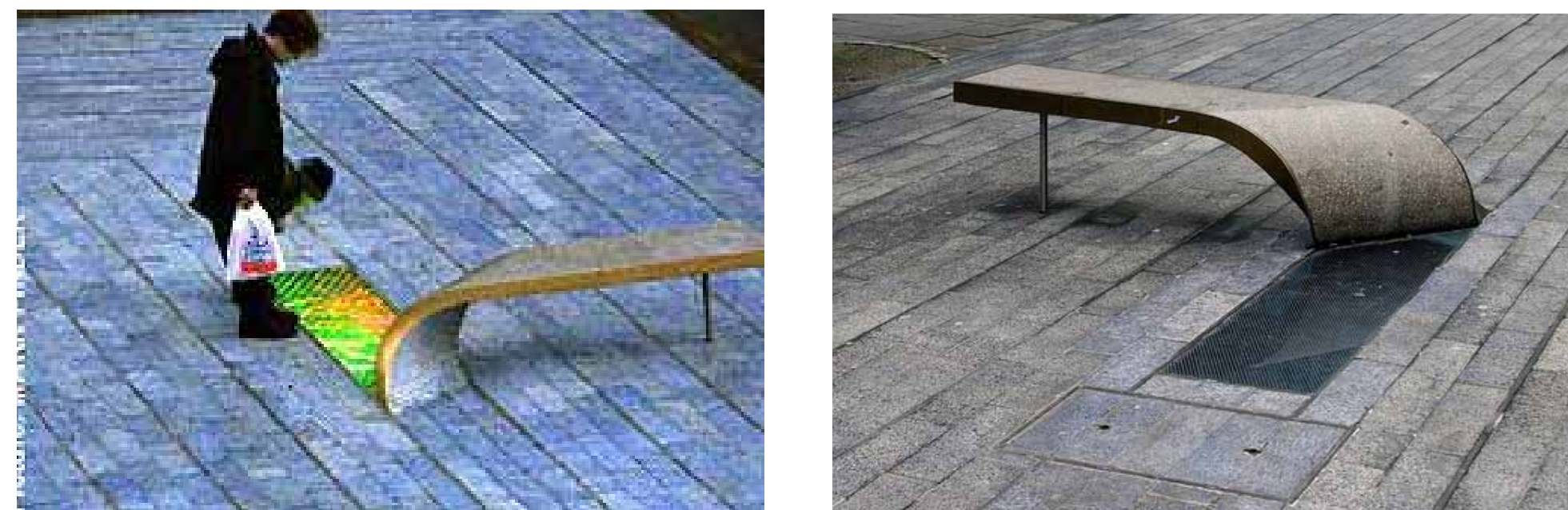
## SEATING



## MATERIALS



## STORM WATER



# Hampden Park Improvements

## Public Art

Design Advisory Committee Mtg #2  
January 15, 2015



Project Manager : Alice Messer  
alice.messer@ci.stpaul.mn.us  
651-266-6412



# Questions/Comments?

Next Meeting :

January 27, 2015  
6:00 to 8:00 pm  
South Saint Anthony Rec. Center



## Hampden Park Improvements

Design Advisory Committee Mtg #2  
January 15, 2015



Project Manager : Alice Messer  
alice.messer@ci.stpaul.mn.us  
651-266-6412