

# MEETING #2

## RICE PARK REVITALIZATION Design Advisory Committee

January 21, 2015  
6:00-8:00 pm  
Saint Paul Parks and Recreation

# AGENDA

*Meeting Goal: Review design goals, 2 concept plans and precedent images, provide feedback, and select one plan to develop for final meeting and open house*

- Recap and Follow up from Meeting #1
- Historical Images – Period of Significance
- Design Goals
- Design Process
- Precedents
- Presentation of Design Concepts
- Discussion



# MEETING 1 : RE - CAP

## Meeting 1:

Project Introduction

Survey Results

History

Site Analysis

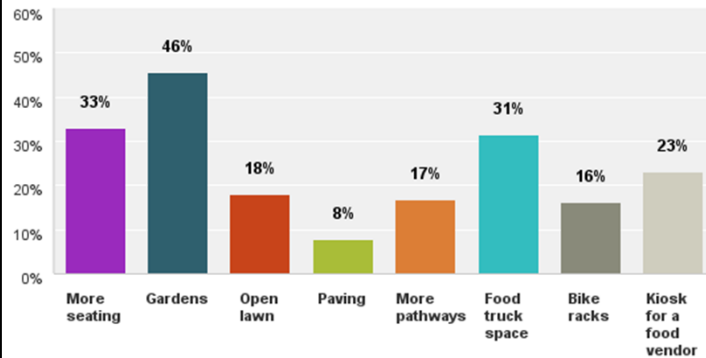
Brainstorming/Discussion



# SURVEY RESULTS SUMMARY

## Q6 If you could add something new to Rice Park, what would it be?

Answered: 178 Skipped: 90



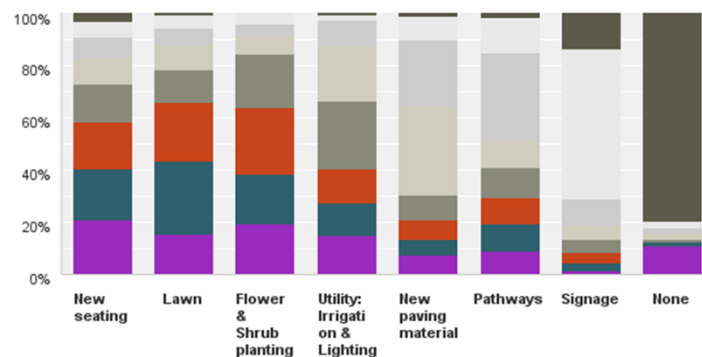
-The top five items to change include garden plantings, added lighting, improved lawn area, pathways paving, and trees.

-The top three items in need of physical improvements include new seating, flower and shrub plantings, & lawn

-Results indicate adding gardens, more seating, food truck space, and lighting are highly preferred.

## Q3 In your opinion, what is a priority for PHYSICAL improvements to Rice Park (please rank)?

Answered: 200 Skipped: 68

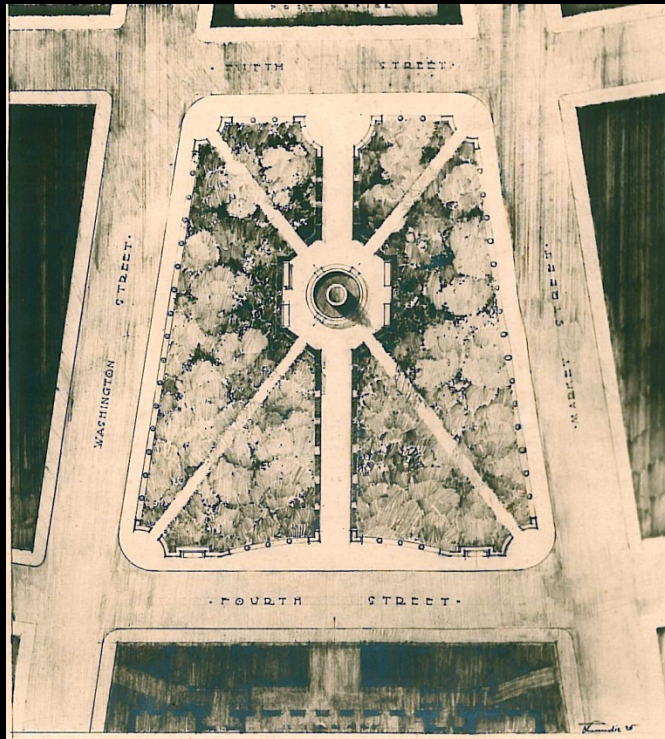


-Comments indicate that the top issues to address include the homeless population, safety, lighting, circulation design, and change of seating.

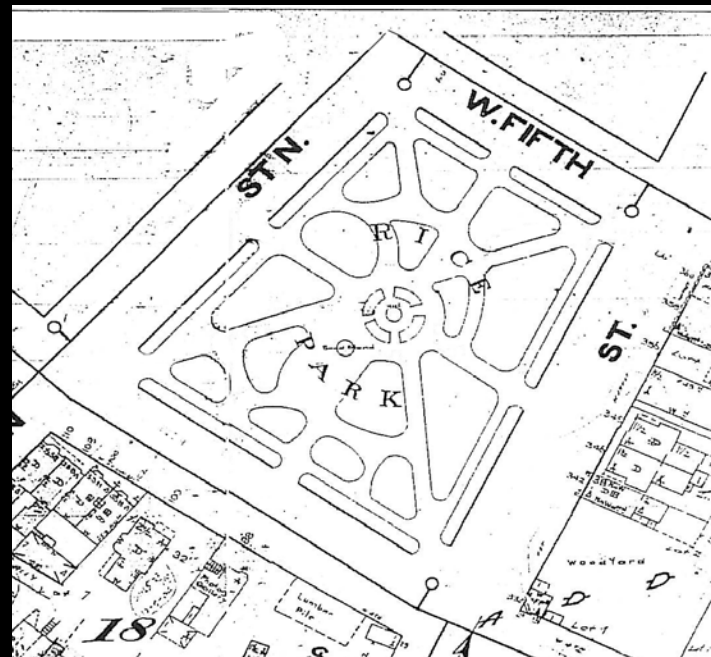
-Results show the favorite aspect of Rice Park includes character of the park, the surrounding buildings, and the fountain

# HISTORY

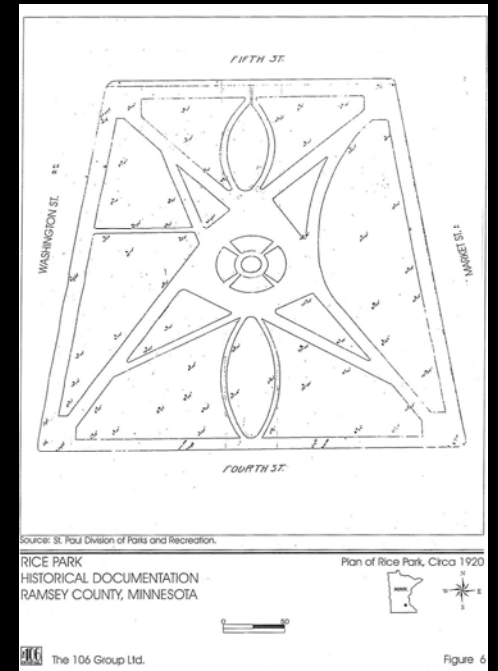
PERIOD OF SIGNIFICANCE: 1849 - 1936



1872



1883

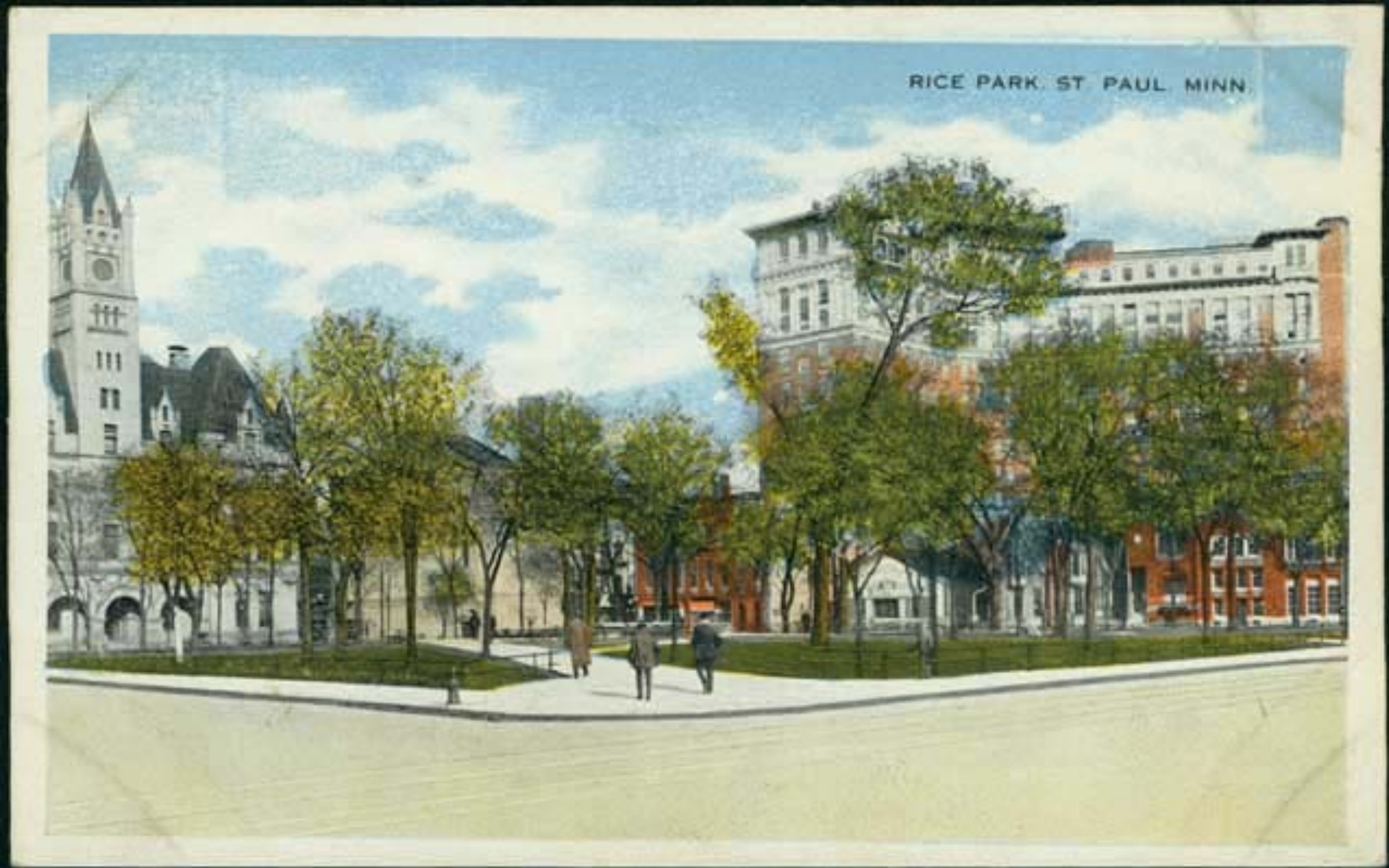


1898



# HISTORY

PERIOD OF SIGNIFICANCE: 1849 - 1936



# HISTORY

PERIOD OF SIGNIFICANCE: 1849 - 1936





# HISTORY

PERIOD OF SIGNIFICANCE: 1849 - 1936





# HISTORY

PERIOD OF SIGNIFICANCE: 1849 - 1936



1890

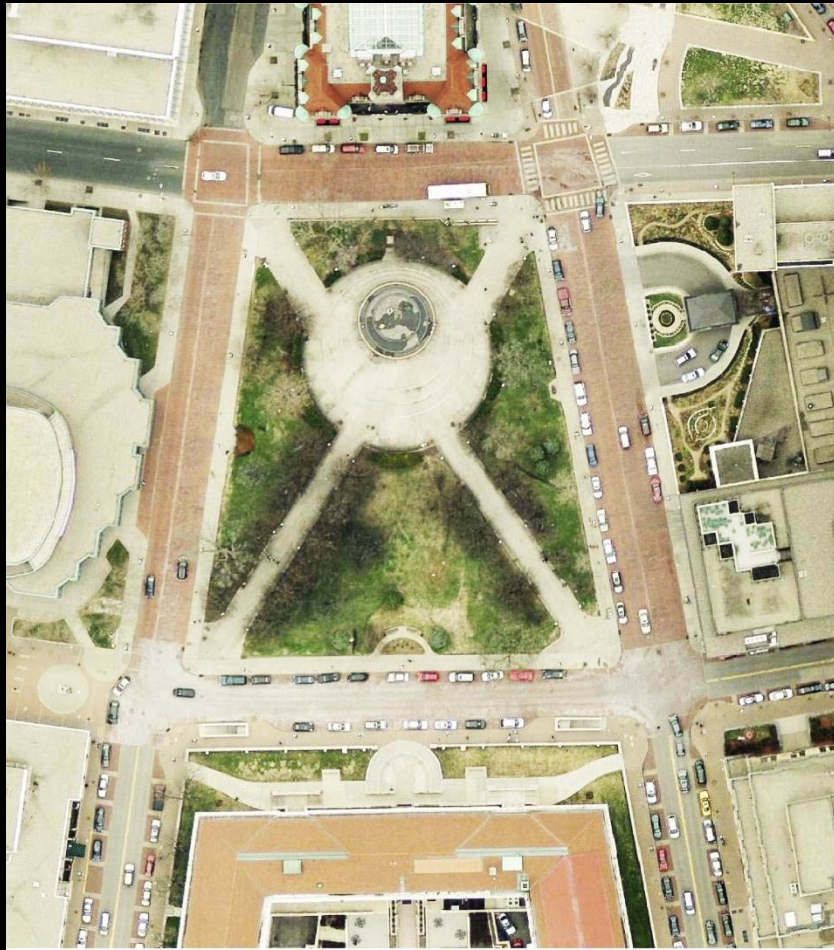
# HISTORY

PERIOD OF SIGNIFICANCE: 1849 - 1936





# Design Goals



## Project description:

Develop a concept plan for the phased improvements to Rice Park to revitalize this significant public space in Saint Paul located on the block bounded by Washington Street, 5th Street, 4th Street, and Market Street. The park is 1.6 acres.

# Design Goals

## GOAL 1: *ENCLOSE*

***Preserve the sense of enclosure from the buildings as a significant historic feature of the park***

- Selectively remove trees to preserve sightlines to buildings and maintain sense of enclosure

## GOAL 2: *INVITE*

***Create a welcoming and safe place for all users***

- Reinforce entry points and edges
- Improve lighting and decrease hiding places by selectively removing trees

## GOAL 3: *UPGRADE*

***Improve infrastructure to support operation staff and programmed use of space***

- Upgrade irrigation and electrical system for improved lawn and to accomodate events

## GOAL 4: *ACCOMMODATE*

***Maintain space for large events but also provide space for small groups and 'conversational seating'***

- Provide seating for small groups to sit for lunch such as moveable tables and chairs

## GOAL 5: *CONSOLIDATE*

***Organize and limit the number of monuments and plaques on site***

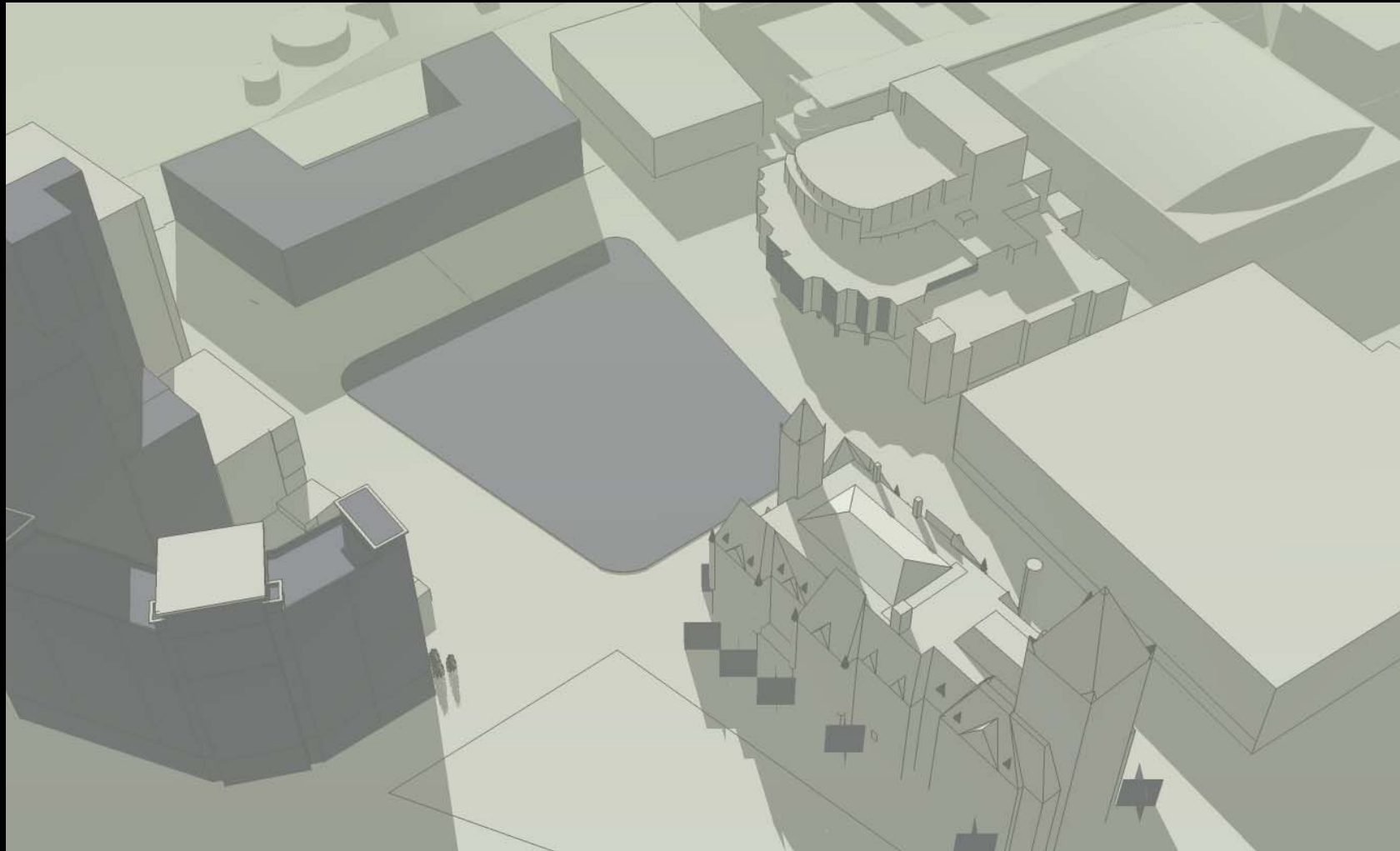
- Design a location for all significant plaques and historical signs



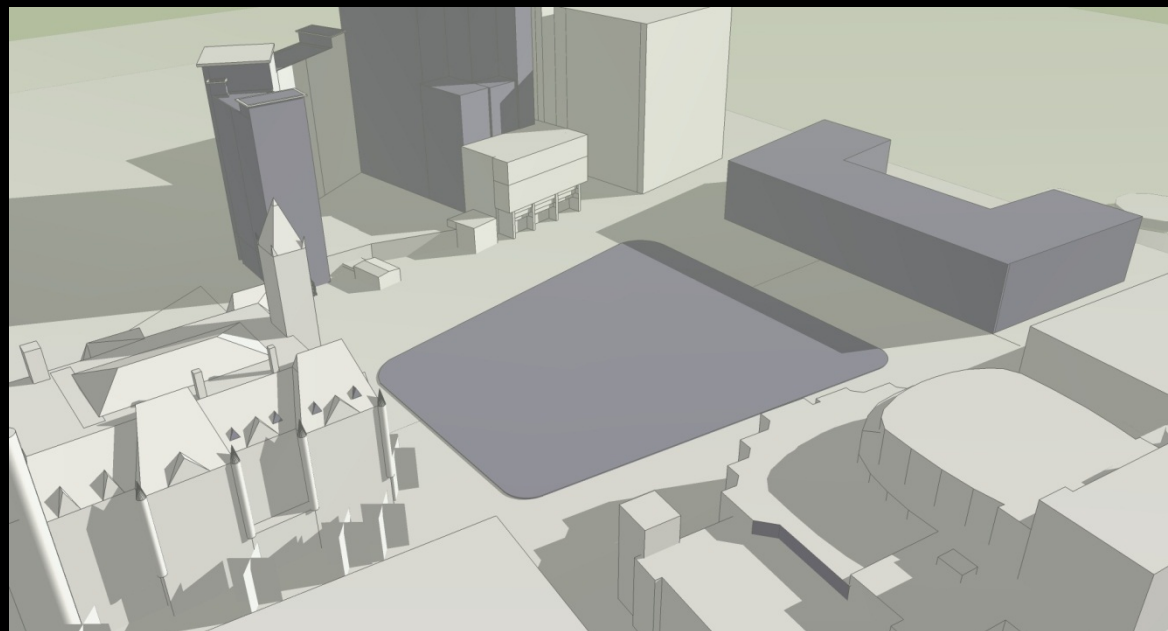
# PRECEDENT PROJECTS



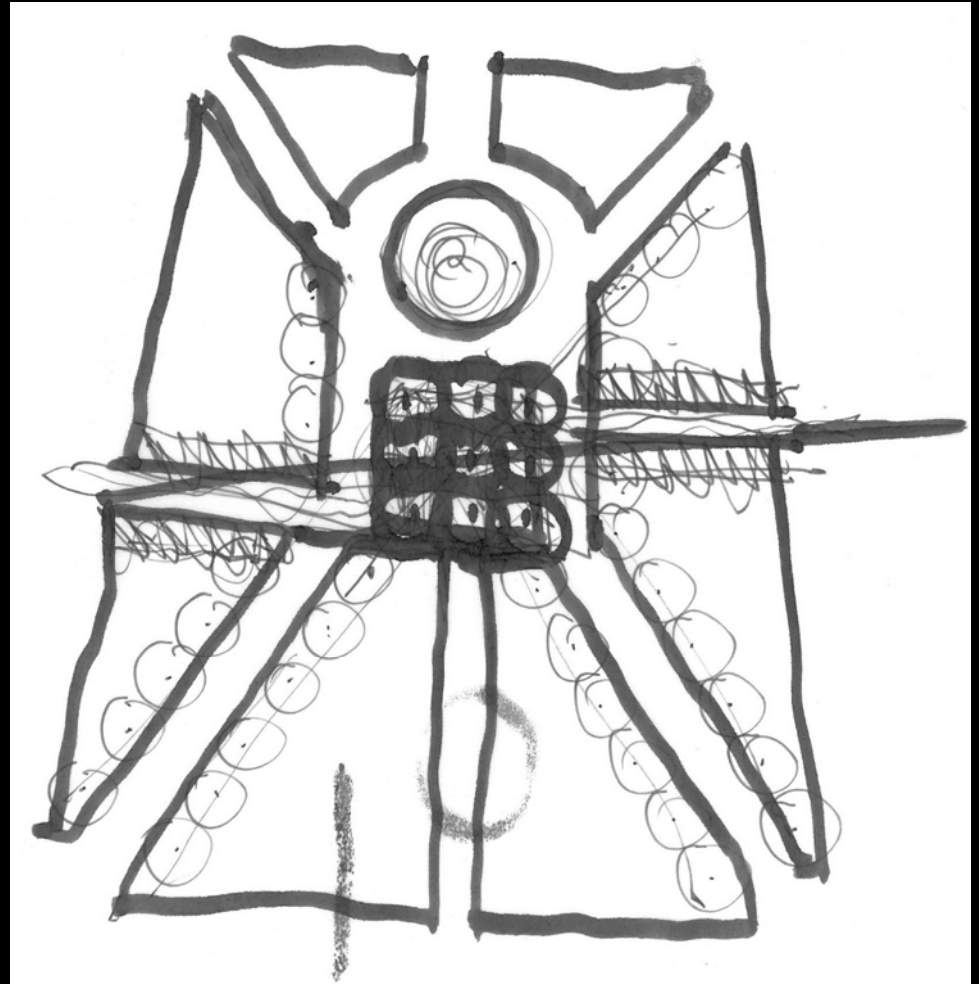
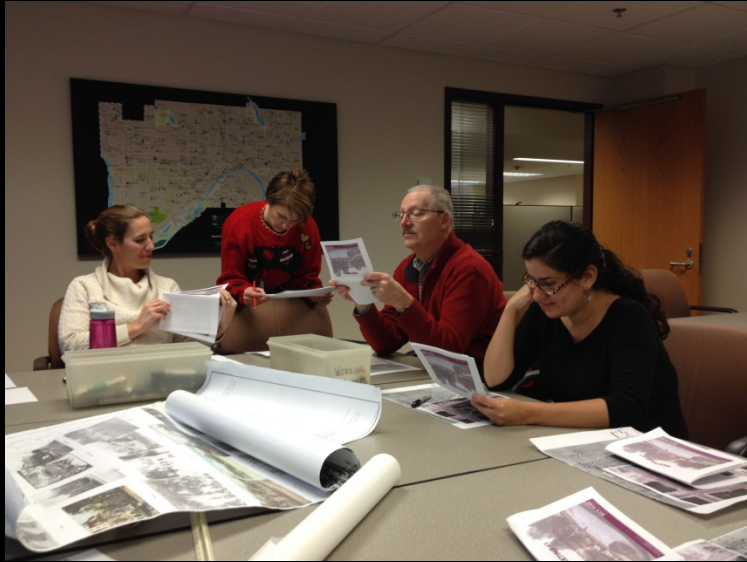
# PLANS & SKETCHUP





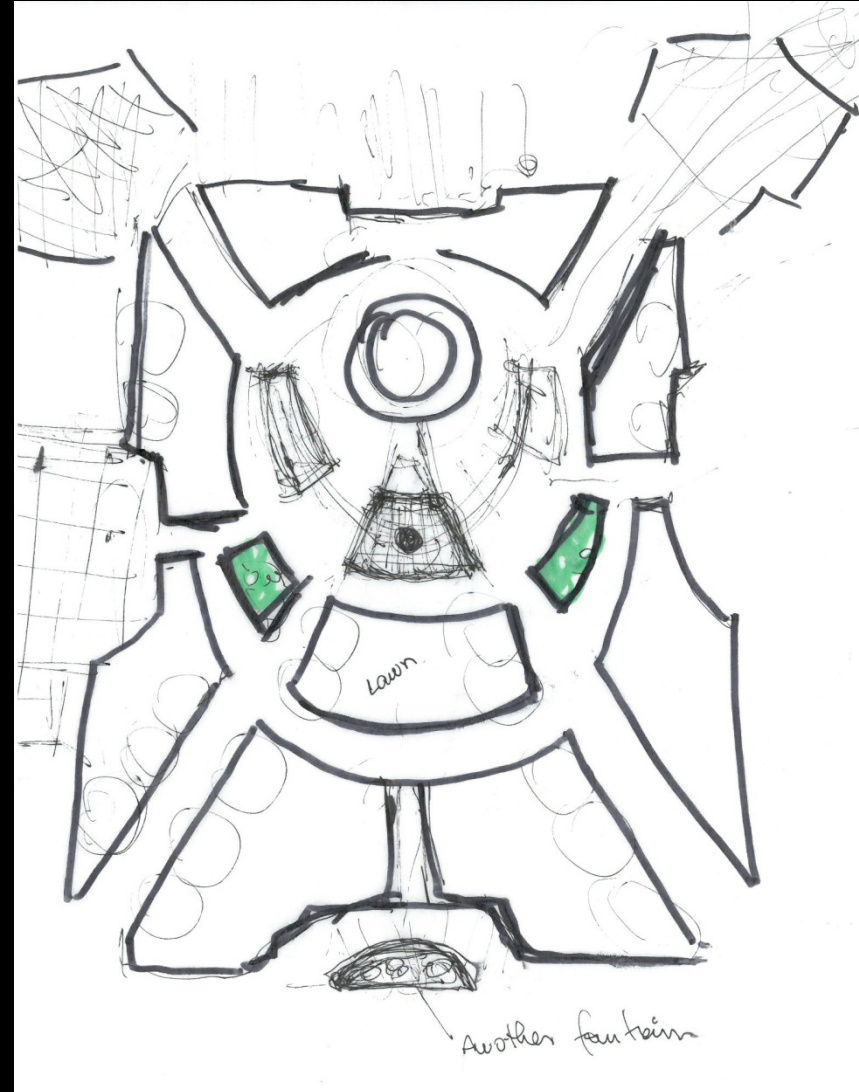
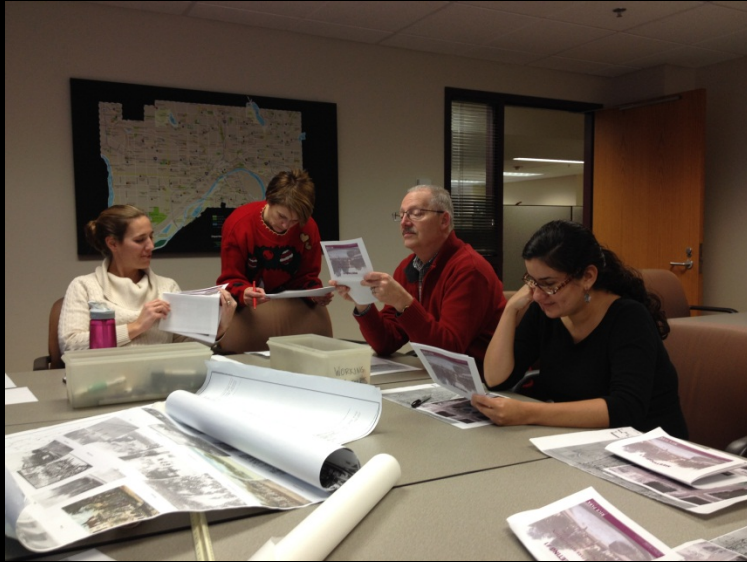


# Design Process

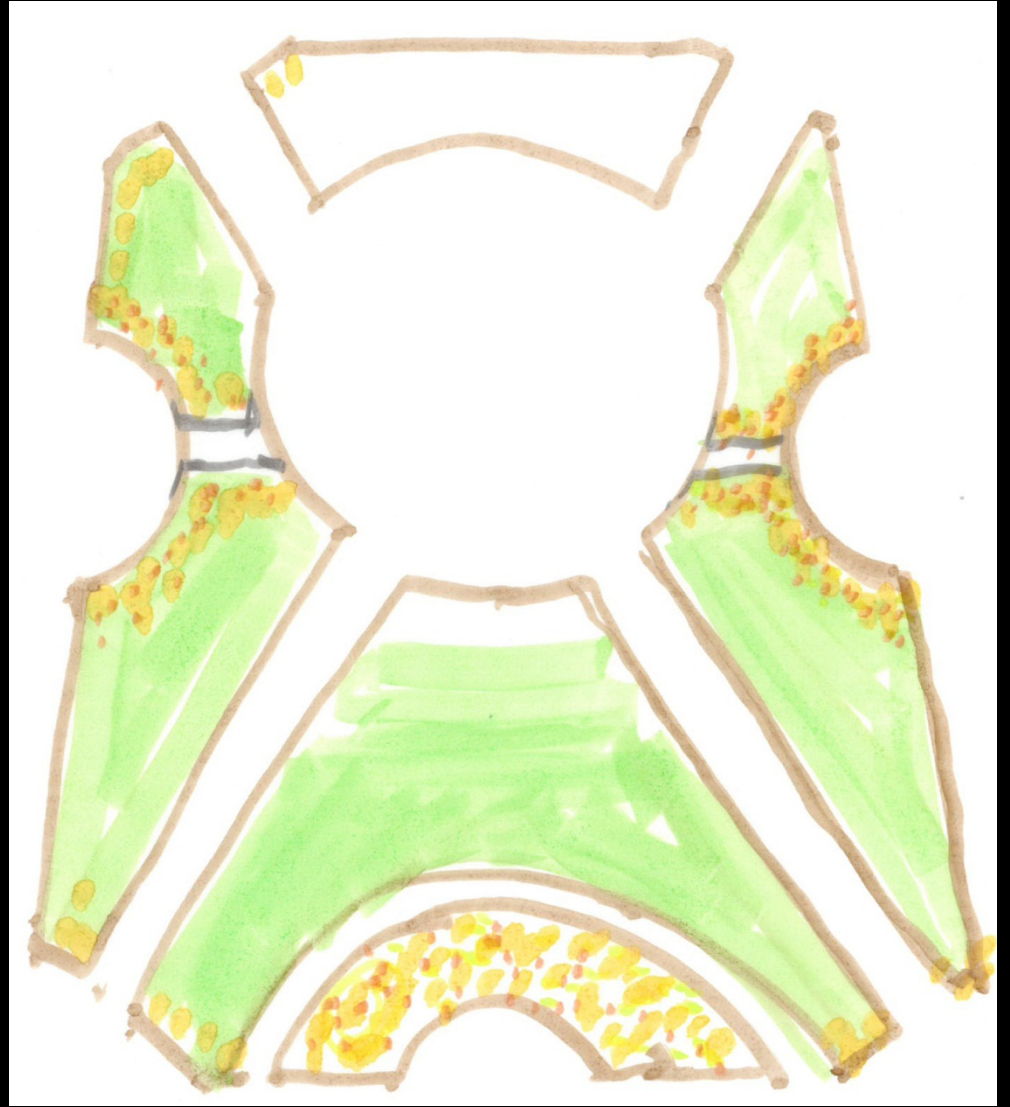
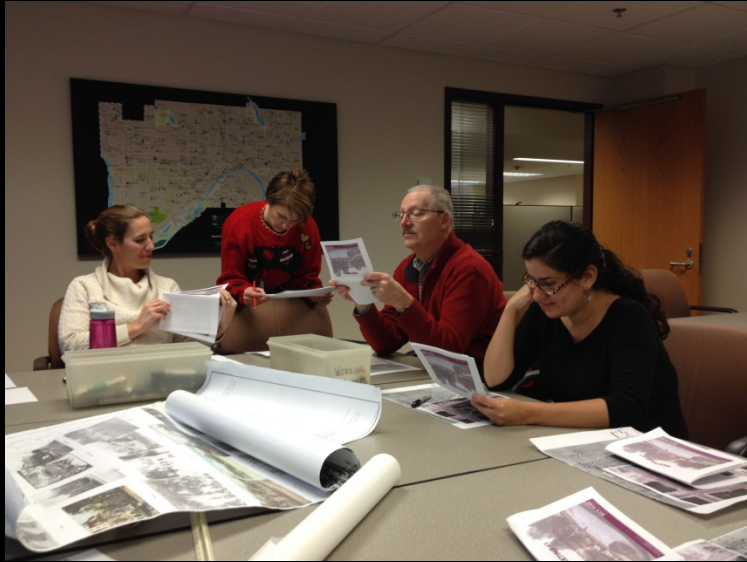




# Design Process

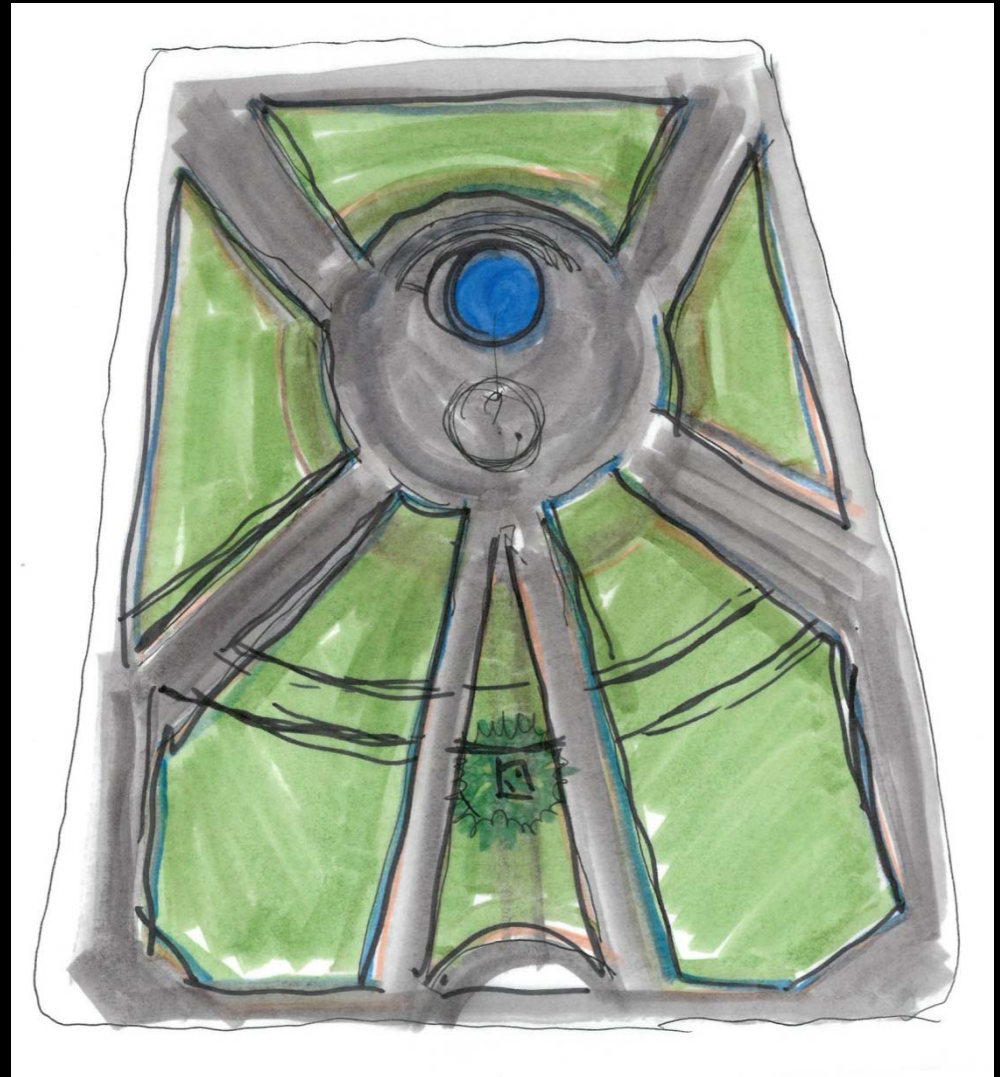
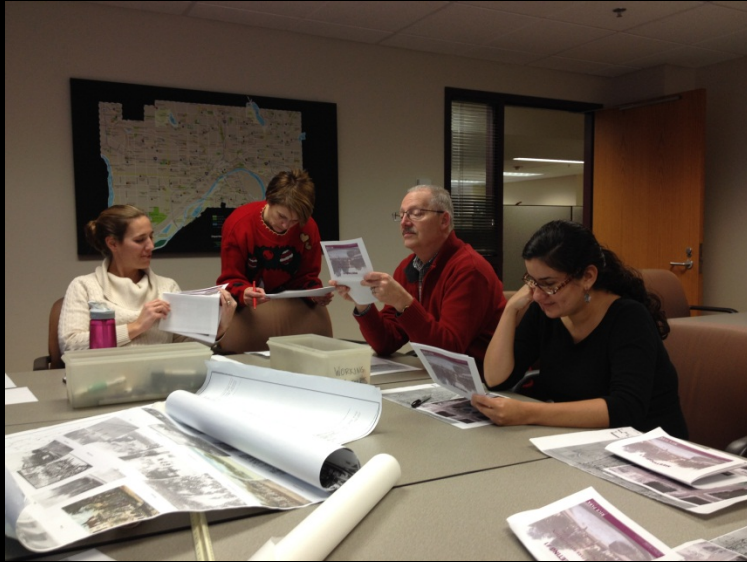


# Design Process



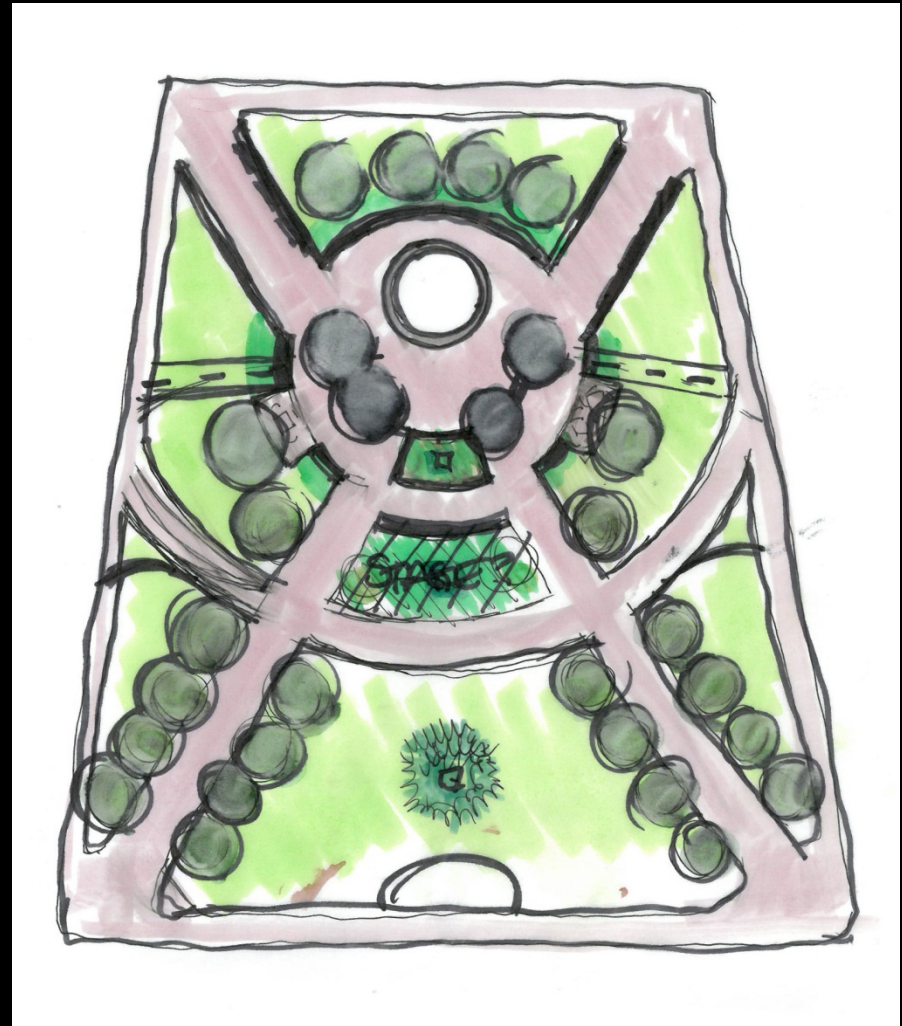
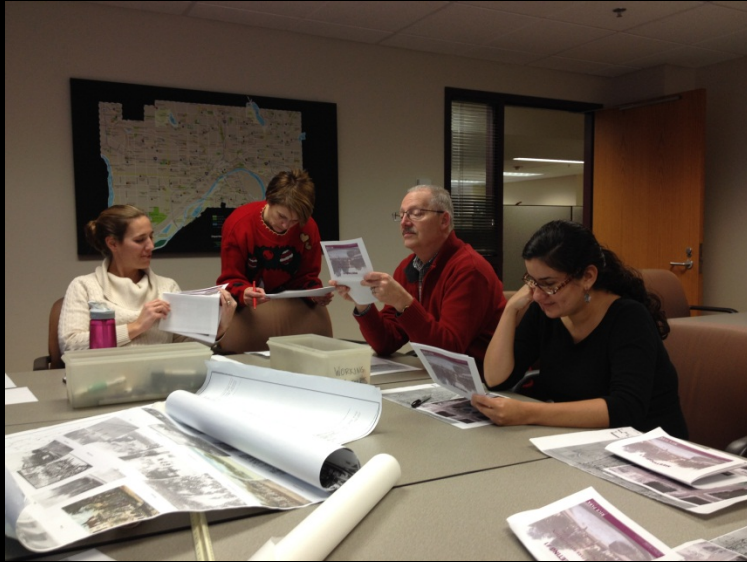


# Design Process



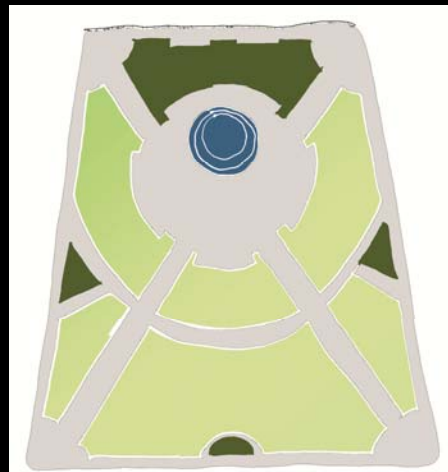
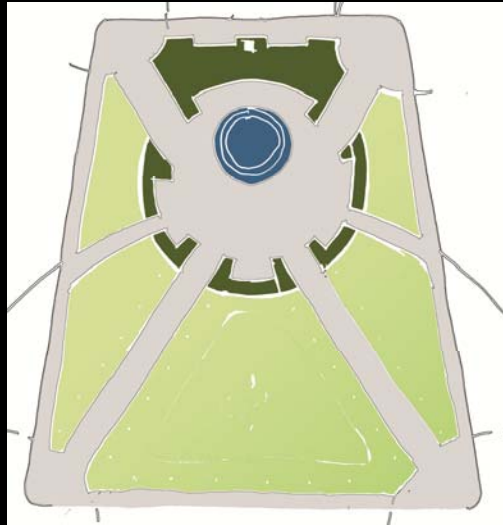


# Design Process

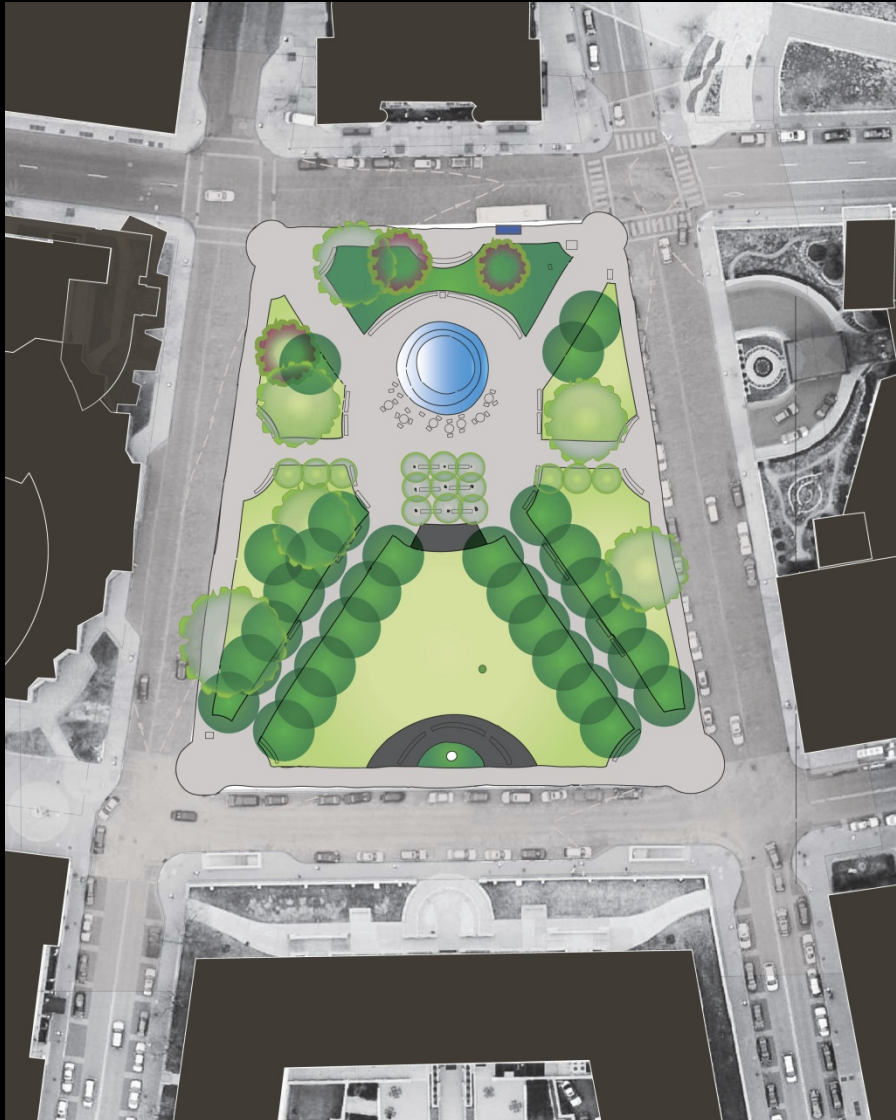




# Design Process



# Concept Plan 1



## Description:

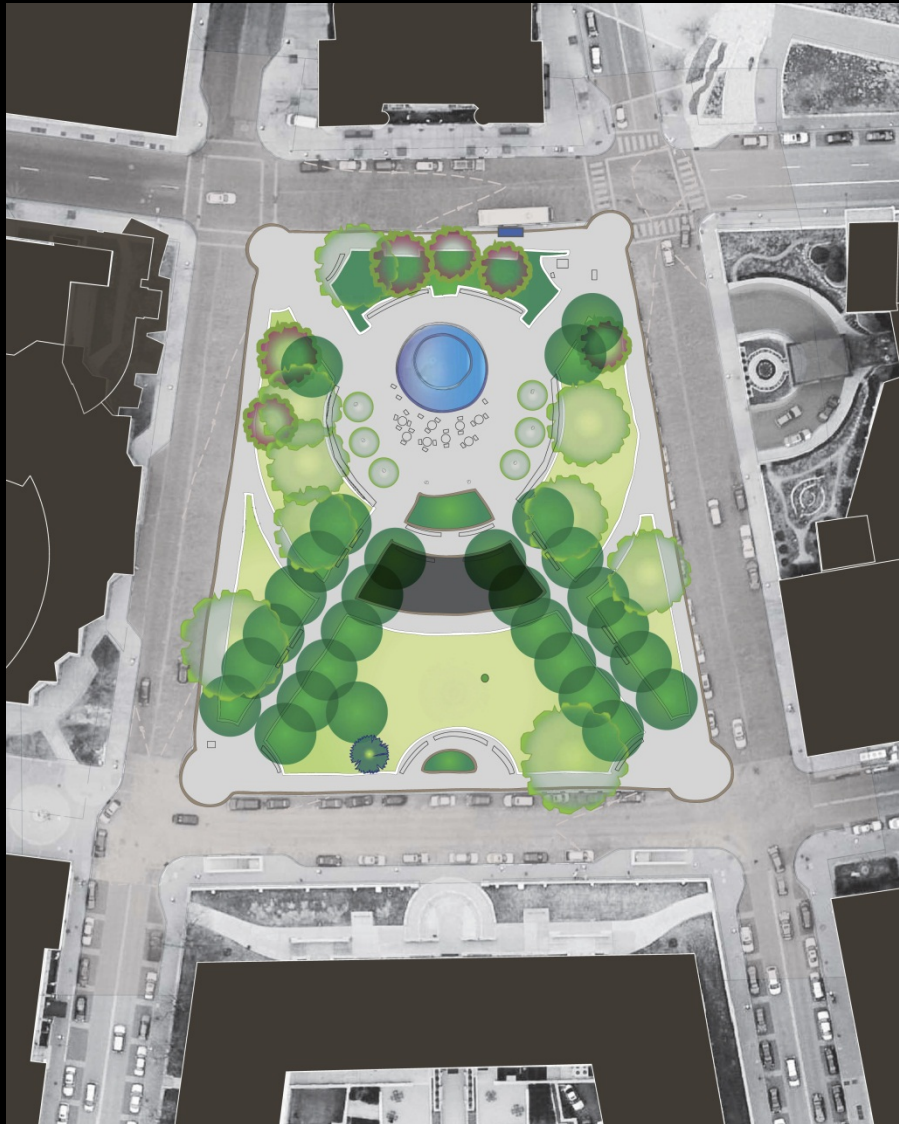
The central gathering space is elongated to create room for a grouping of shade trees. A large open lawn in south half of the site accommodates large group gatherings. A secondary pathway crosses the site.







# Concept Plan 2

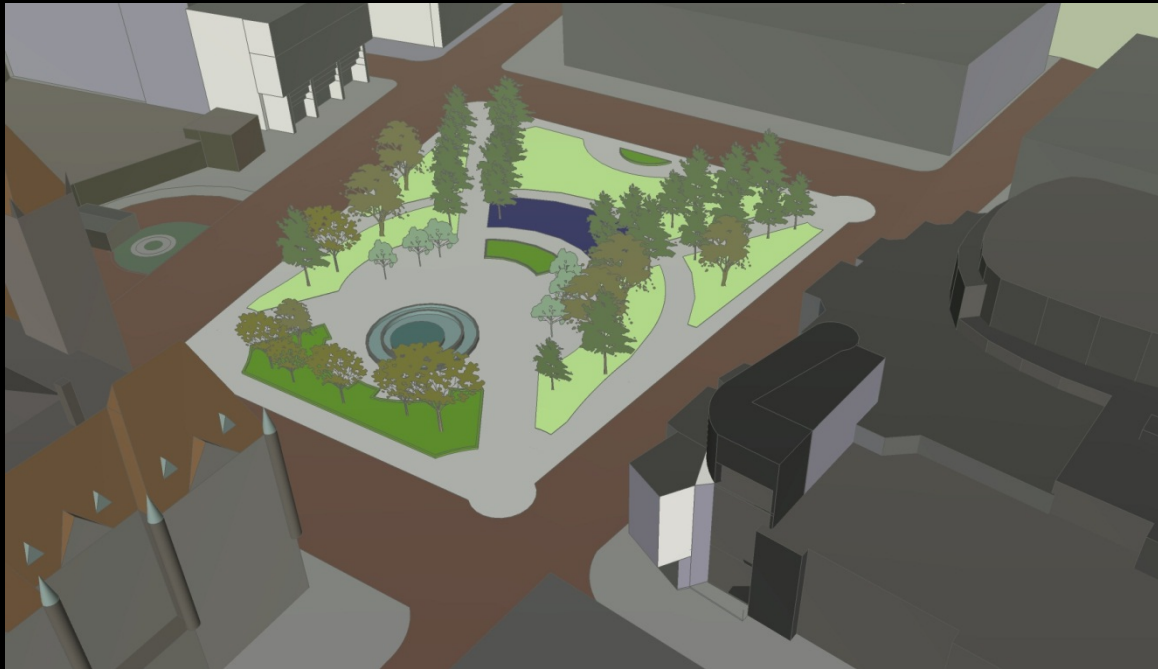
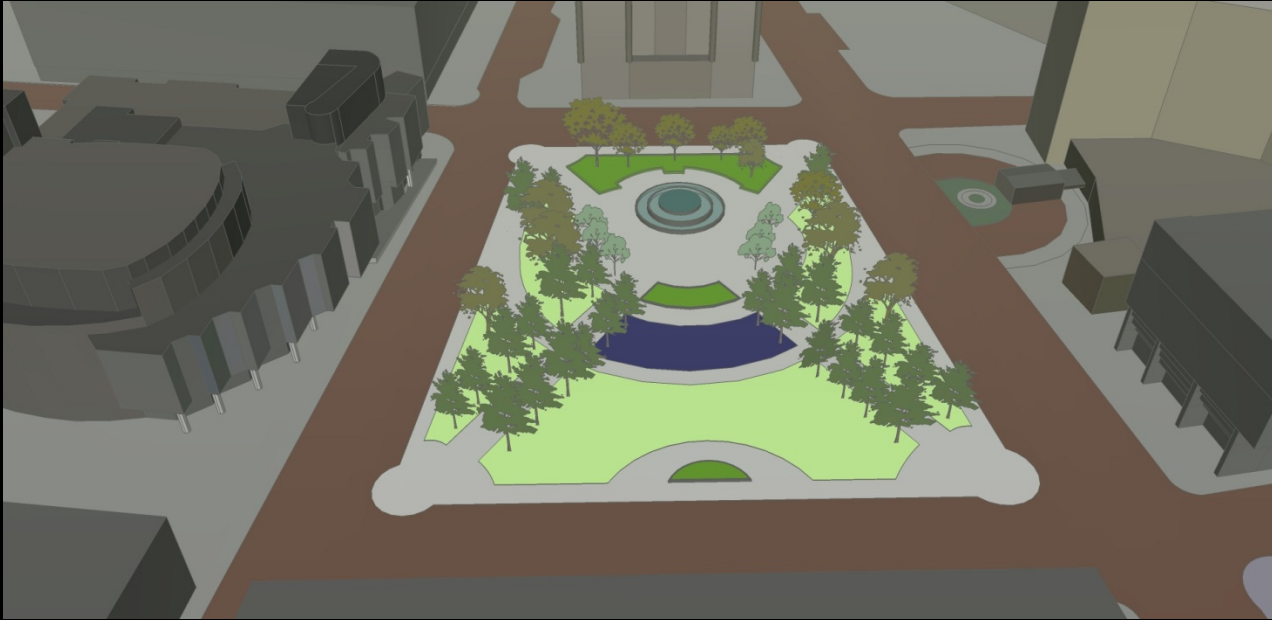


## Description:

A secondary pathway bisects the site to create more options for moving through the space. The park is subdivided into additional flexible space for seating, group gatherings, or performances. Shade trees are arranged inside the central space to provide shade and create comfortable seating.







# Discussion

...

*Next steps...*



# Next Steps:

1. Further refinement of concept plan
2. Cost estimate
3. Specific phasing for implementation

- - -

## Meeting #3:

~~March 4, 2015 - 6pm~~

CHANGED MEETING TIME-  
refer to website

- - -

*Open House (public review):*

~~*April 1 (tentative)*~~