

Ford Site Redevelopment

parkland dedication



Ford Site Zoning and Public Realm Master Plan

- Master Plan adopted 2017 and amended 2019
 - decade of planning
 - 122 acres not including UP Rail and
 - Ford Site and CP Rail site

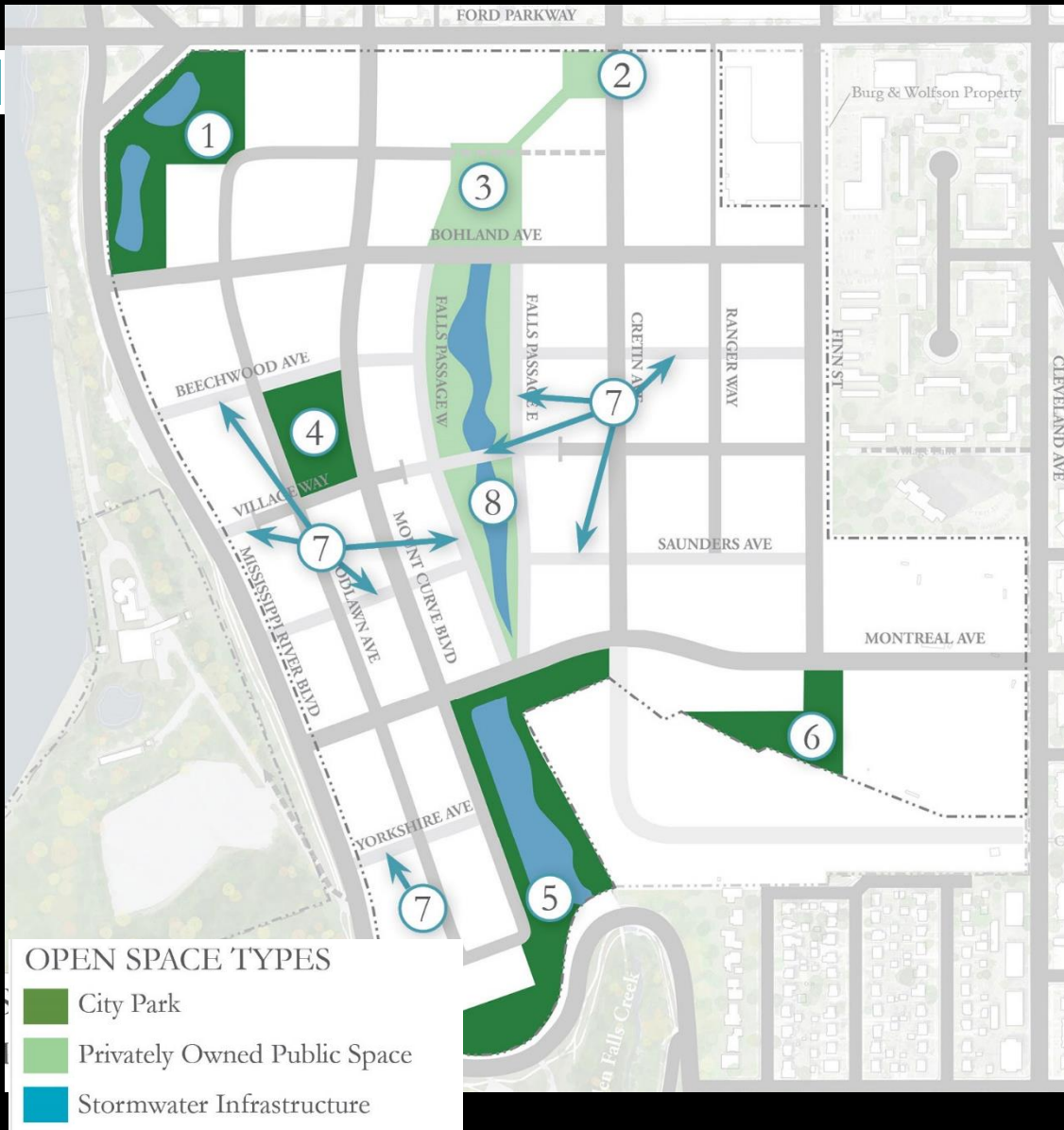
Open space, vegetation and public places will form the backbone of the community, bringing people together through nature, for recreation and at community events

A network of parks, trails and attractive public streets will provide the fabric of places and spaces for people.

Previous Conditions



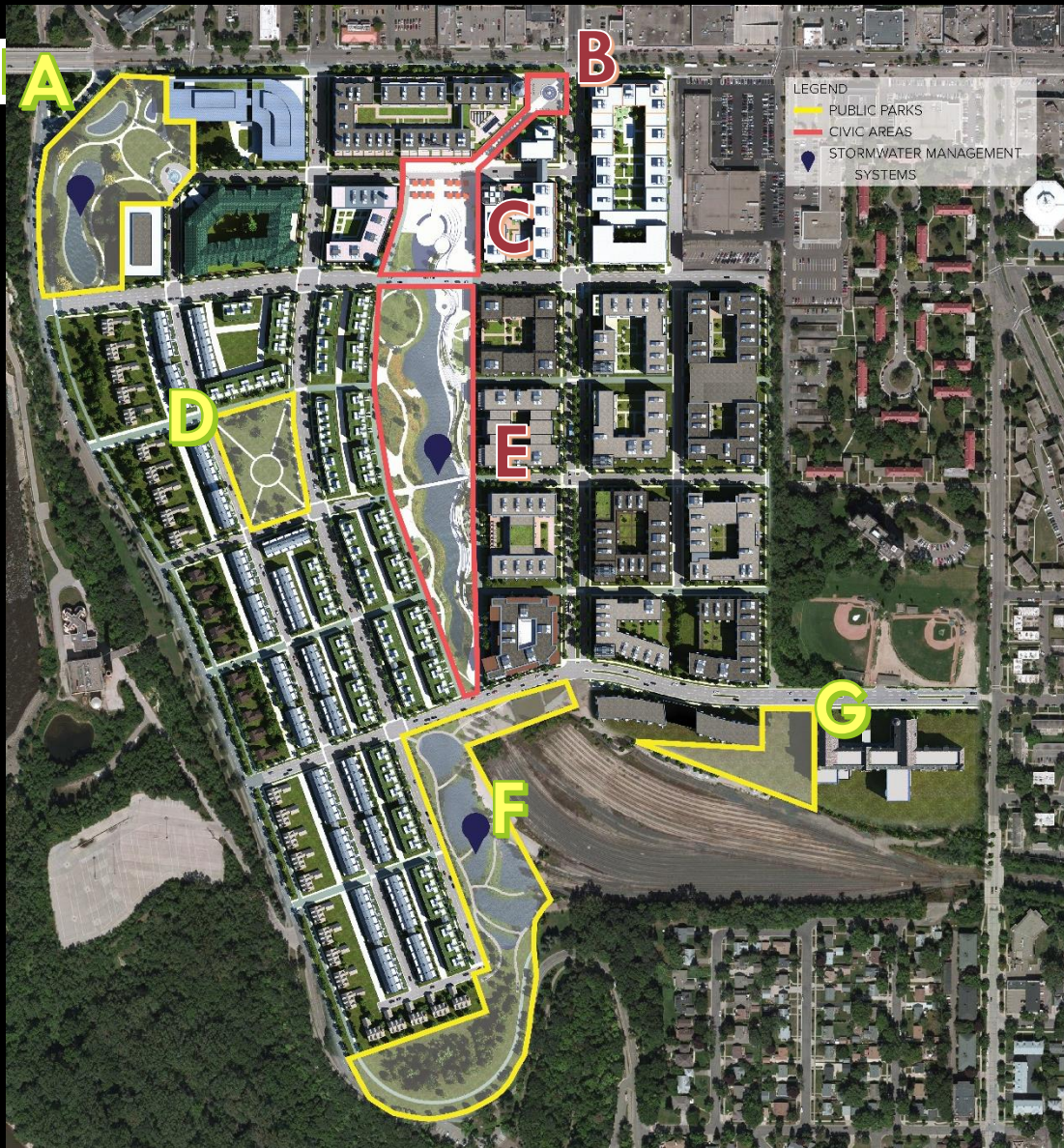
Master Plan 2019



OPEN SPACE ELEMENTS

- ① Gateway Park
- ② Urban Plaza
- ③ Civic Square
- ④ Neighborhood Park
- ⑤ Hidden Falls Headwaters Feature
- ⑥ Community Green Space
- ⑦ Walking and Biking Paths
- ⑧ Central Stormwater Spine

2019 Ryan Open Space Plan



gateway park



- 2.5 acres
- Key visual entry into the site
- Transition between commerce and nature
- Potential elements
 - public art
 - water feature
 - seating
 - picnic area
 - playground
 - dog park
 - community garden



neighborhood park



- ❑ 1.5 acres
- ❑ designed for all ages and abilities
- ❑ natural and unique character and design overall
- ❑ Potential elements
 - ❑ picnic area
 - ❑ playground
 - ❑ open field
 - ❑ community garden
 - ❑ ice skating
 - ❑ small sports facilities



hidden falls headwaters



- ❑ 4.7 acres
- ❑ Transition - Central stormwater and HFRP
- ❑ natural landscaping with passive uses
- ❑ major access point Potential elements
 - ❑ bike and pedestrian trails
 - ❑ small picnic and rest areas
 - ❑ vistas to HFRP and Mississippi River
 - ❑ safe access



southern park



- ❑ 1.5 acres
- ❑ sloped south-facing terrain
- ❑ added in Ryan's plan and 2019 MP Amendment

privately owned



- Civic Square
- Central Stormwater Feature
- Ballfields



development schedule

	2019	2020	2021	2022	2023	2024	2025	2026
Finalize Plat								
Community Engagement for City Parks								
Design City Parks and Open Space								
Construct Mass Grading and Utilities								
Construct City Parks and Public Space								
Construction Vertical Development								