



## PARKS, RECREATION AND OPEN SPACE

# Introduction

The Parks, Recreation and Open Space Chapter sets broad policy to create an equitable, safe, connected and sustainable park system for all users. The Saint Paul Parks and Recreation system consistently ranks as one of the best in the nation, with more than 179 city-managed parks and open spaces, 25 recreation centers, more than 100 miles of trails, aquatic facilities, municipal golf courses, and the Como Park Zoo and Conservatory. It comprises a large, diverse and vibrant network of people, spaces and facilities that is recognized by Saint Paul residents as one of the city's great shared assets. Together, the system components form a vital connective tissue, facilitating a sense of community, and fostering stewardship of nature and community spaces.

Park facilities and programs improve the quality of life for all residents and visitors. Beautiful landscapes and facilities for recreation foster public health by promoting mental and social well-being, and providing opportunities for physical fitness. Community centers and parks serve an important role for the city's youth by providing safe and healthy places and activities. Parks connect us to the Mississippi River and lakes by providing access and spaces to enjoy them. Great public spaces are an important component of sustainable economic development, drawing and retaining residents, increasing nearby property values and attracting businesses.

Changes in demographics, technology and development are constant. The City will need to be vigilant to ensure that the park system responds to changing needs, challenges and opportunities, and that a person's access to the benefits provided by our world-class parks is not pre-determined by race, ethnicity, age, income or ability.

---

The following goals guide the Parks, Recreation and Open Space chapter:

1. Equitable allocation of programs, resources and amenities.
2. People, programming and spaces responsive to changing needs.
3. Environmental and economic sustainability.
4. A healthy network of community partnerships.
5. Strong and accessible connections.



## Goal 1: Equitable allocation of programs, resources and amenities.

**Policy PR-1.** Ensure equitable access to Parks and Recreation programs, resources and amenities.

**Policy PR-2.** Reduce barriers to Parks and Recreation facilities and programming, including those caused by financial, physical, language and perception issues.

**Policy PR-3.** Engage diverse community groups and all potentially impacted stakeholders early in setting balanced priorities for park-related matters.

**Policy PR-4.** Prioritize investment to ensure that residents have access to a park within a 10-minute walk.

**Policy PR-5.** Prioritize investment in physical assets of community centers, play areas, pools, and other amenities to ensure that common minimum standards are met.

**Policy PR-6.** Use mobile recreation to fill park or recreation service gaps, enhance events, and provide quality recreation at neighborhood and community parks.

**Policy PR-7.** Foster opportunities for community-building and personal connections through Community Center facility use and programming.

**Policy PR-8.** Ensure that communications are up-to-date, understandable and engaging.

## PERCEPTIONS OF “PARK”

The term “park” generally conjures up the image of a manicured landscape with amenities that include lawns, picnic benches, formal trails, perennial gardens, etc. These tend to be the most heavily used places in our public lands. However, natural and naturalized areas are significant components of our system of public recreational space in the city. Such landscapes provide important opportunities to experience nature, understand the natural world around us, and promote the urgency to care for it. White people, though, are significantly more likely to explore those parts of our park system than are African Americans, African Immigrants, Asian Americans, Asian immigrants and Hispanic/Latino/Latina people (Kaplan & Talbot, 1988; Ozguner, 2011). As a city, we are obligated to ensure that everyone has access to and feels welcome within our public lands.

We have chosen to add the phrase “Open Space” to the chapter title to promote an understanding that the entire spectrum of park types is open to all members of the Saint Paul community. As the stewards of our system of open spaces, we need to continually consider ways to ensure that everyone feels welcome and everyone has an opportunity to explore the greater natural environment for improved collective well-being.

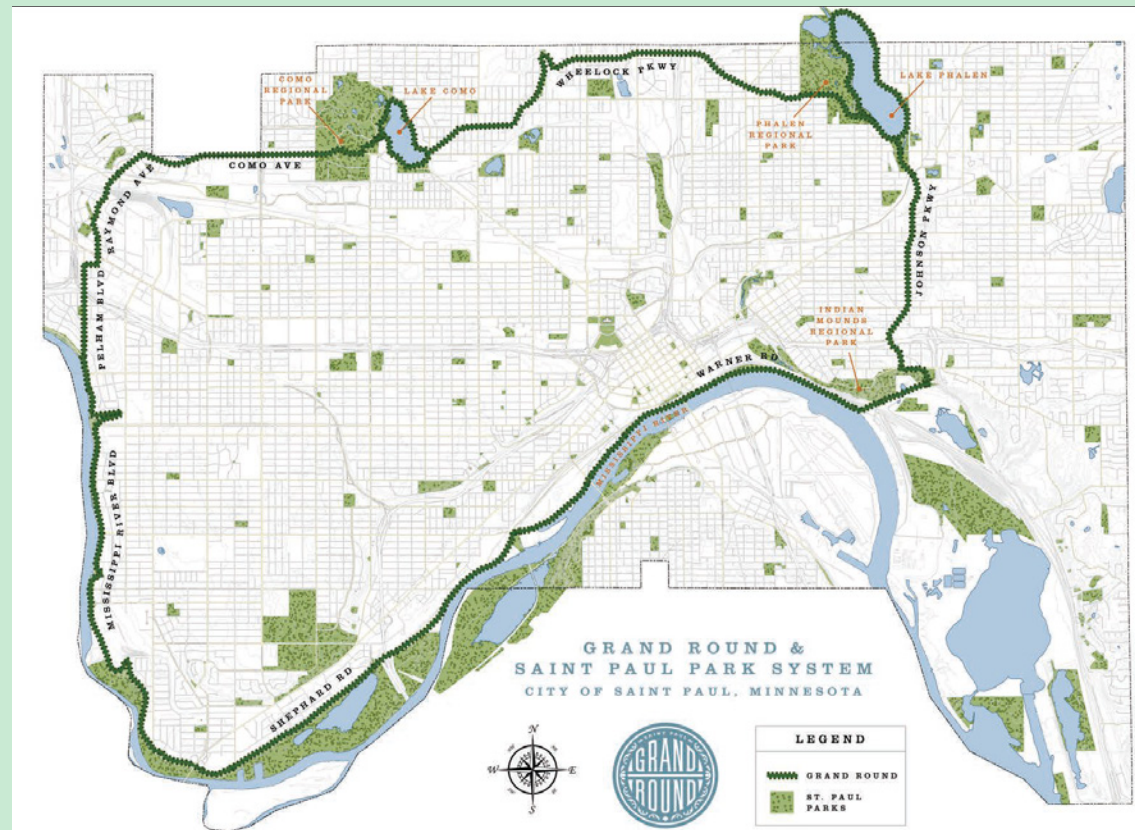


## THE GRAND ROUND

The Saint Paul Grand Round was conceived of in 1872 by landscape architect H.W.S. Cleveland. He envisioned a park system connecting all parts of Saint Paul with expansive boulevards and luxurious greenery that would serve cyclists and pedestrians.

Although the Grand Round was conceived in the late 19th Century, it was only partially realized in the decades that

followed. In the early 2000s, a focus on completing the system was renewed. This effort was supported by community interest and prioritized through the adoption of planning documents, including the Comprehensive Plan. More than 140 years after it was initially conceived, the Grand Round is finally close to being realized as a unifying recreation, wildlife corridor and transportation asset for the entire city.



## Goal 2: People, programming and spaces responsive to changing needs.

**Policy PR-9.** Use customer and resident feedback on needs, satisfaction and trends to improve park experience, advance equity and bring in new users.

**Policy PR-10.** Embrace and integrate emerging cultural and recreation trends, particularly those that meet the recreational needs of youth, underserved populations and emerging resident groups.

**Policy PR-11.** Strengthen the cultural competency of Parks and Recreation staff.

**Policy PR-12.** Ensure Parks and Recreation staff reflect the demographic diversity of a dynamic city to better inform decisions regarding operations and facilities.

**Policy PR-13.** Account for seasonality and climate resiliency in the design, maintenance and programming of Parks and Recreation assets to maximize activity throughout the year.

**Policy PR-14.** Support volunteer engagement and participation to enhance stewardship, programming, social cohesion and ownership.

**Policy PR-15.** Innovate in park design and maintenance, while making use of best practices.

**Policy PR-16.** Improve safety in existing and future parks through design, maintenance and programming.



**Policy PR-17.** Support innovative and sustainable transportation options that enhance access to and use of Parks and Recreation facilities, such as electric vehicles, bike share and ride share.

**Policy PR-18.** Ensure that investment in City parks accounts for planned increases in development density through tools such as parkland dedication.

### Goal 3. Environmental and economic sustainability.

**Policy PR-19.** Improve the environmental sustainability and resiliency of parks through strategies such as shared, stacked-function green infrastructure; best management practices in stormwater management; increased tree canopy; increased plant diversity and pollinator-friendly plantings.

**Policy PR-20.** Closely monitor invasive species on park property and respond to threats.

**Policy PR-21.** Ensure that programming and facilities support public health and personal improvement efforts, such as education, job training, and fitness and nutrition programs.

**Policy PR-22.** Model sustainable practices in park construction and operations when possible.

**Policy PR-23.** Perform routine and preventative maintenance on park assets to protect them and maximize the service life of structures and natural resources.

**Policy PR-24.** Develop publicly-accessible shared-use facilities as a first option when contemplating new or replacement indoor recreation facilities.

**Policy PR-25.** Strive to make programming financially self-sustaining.

**Policy PR-26.** Use data-driven evaluation of park assets to develop a maintenance and replacement schedule, and plan for future budgetary needs.

**Policy PR-27.** Rate future building investments as they are presently but with additional weight given to cost benefit analyses and return on investment principles.

**Policy PR-28.** Promote the ecological function of parkland and open space, while balancing it against nature-based recreation and other public uses.

### Goal 4: A healthy network of community partnerships.

**Policy PR-29.** Collaborate with other public and private entities to maximize use and create operational efficiencies of existing facilities and programming when there is a net benefit to the public.

**Policy PR-30.** Seek out partnerships with private entities, such as Como Friends, to finance capital and maintenance costs of Parks and Recreation facilities without compromising good design solutions, reducing public access or over-commercializing the public realm.

**Policy PR-31.** Encourage and support private landowners and developers to create and maintain privately-owned public space (POPS) and green infrastructure, especially as land use intensity and activity levels increase.

**Policy PR-32.** Support community gardens and private landscape beautification efforts where physically and financially feasible.



### “NO NET LOSS” POLICY

Parkland in Saint Paul is protected for future park users through the City’s “no net loss” policy. The policy is a part of Saint Paul’s City Charter and reads in part, “Lands which may have been heretofore acquired by any means or which may hereafter be acquired by any means for park purposes shall not be diverted to other uses or disposed of by the city...”

Any diversion or disposal is reviewed by both the Saint Paul Parks and Recreation Commission and the City Council. When the City Council decides that diversion or disposal of parkland is in the public interest, additional parklands must be acquired to replace the lands that are diverted, preferably within the same District Council area and of a similar nature to the diverted parkland. (City Charter Section 13.01.1)



**Policy PR-33.** Encourage business partnerships that provide value-added services to park users, cover city costs, and generate revenue to enhance and expand programming.

**Policy PR-34.** Coordinate with Saint Paul Public Schools to reduce redundancies, and become more efficient in maintaining physical plants and managing fields.

## Goal 5: Strong and accessible connections.

**Policy PR-35.** Prioritize safety and equity when filling gaps in the trail and bikeway system to ensure seamless connections throughout the city for pedestrians and bicyclists of all ages and abilities.

**Policy PR-36.** Integrate parkways and trails with the city's broader transportation network to provide convenient and safe access to the park system.

**Policy PR-37.** Pursue strategic acquisitions to fill existing gaps and address changing needs in the parks system.

**Policy PR-38.** Improve and encourage pedestrian and bicycle connections between park facilities and other significant destinations, such as lakes and rivers, schools, transit facilities and Neighborhood Nodes.

**Policy PR-39.** Emphasize safety, convenience and comfort when designing new trails or rebuilding those that already exist.

**Policy PR-40.** Provide interpretive elements to educate users about unique aspects of the park system.

**Policy PR-41.** Provide consistent wayfinding signage in each project or park so that it is recognizable as part of the broader City system.

**Policy PR-42.** Involve staff from the Department of Parks and Recreation from the beginning of discussions regarding large-scale land redevelopment sites.

**Policy PR-43.** Address physical park encroachments that impair use through effective parkland management and protection.

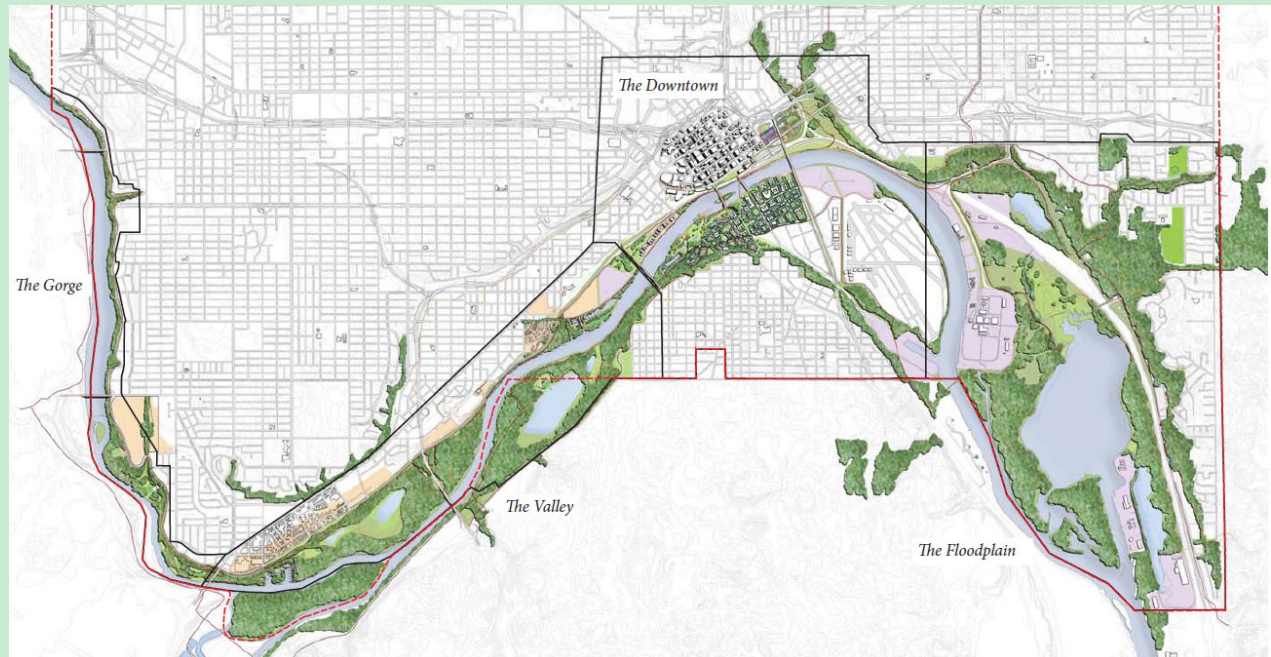
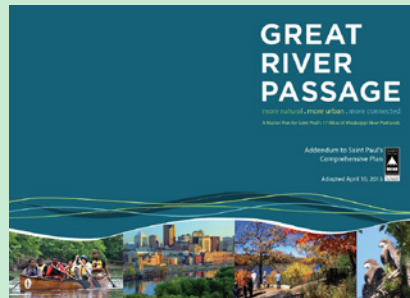
**Policy PR-44.** Support facility improvements that better connect neighborhoods to the Mississippi River.



## Great River Passage Master Plan

In 2013, the City of Saint Paul adopted the Great River Passage Master Plan – a comprehensive framework for creating vibrancy in the city’s 3,500 acres of parkland along the river. The Saint Paul Parks and Recreation Department is now implementing the next phase of the Great River Passage – a bold initiative to steward and tap into the potential of the 26 miles of riverfront in Saint Paul.

The recently-created Great River Passage Conservancy, an independent 501(c)3 nonprofit, advocates for projects and guides private fundraising efforts for projects that create places and activities to strengthen existing connections and create new ones along the Mississippi River.



# Appendix A

Map P-1: Regional Parks and Trails ..... 119

Map P-2: Existing and Proposed Local Parks.....120

Map P-3: Regional Trail Search Corridors ..... 121

# Appendix B

Park and Trail Inventory..... 122

Notes: These appendices provide supporting content for parks and recreation-related policies and satisfy associated Metropolitan Council requirements.

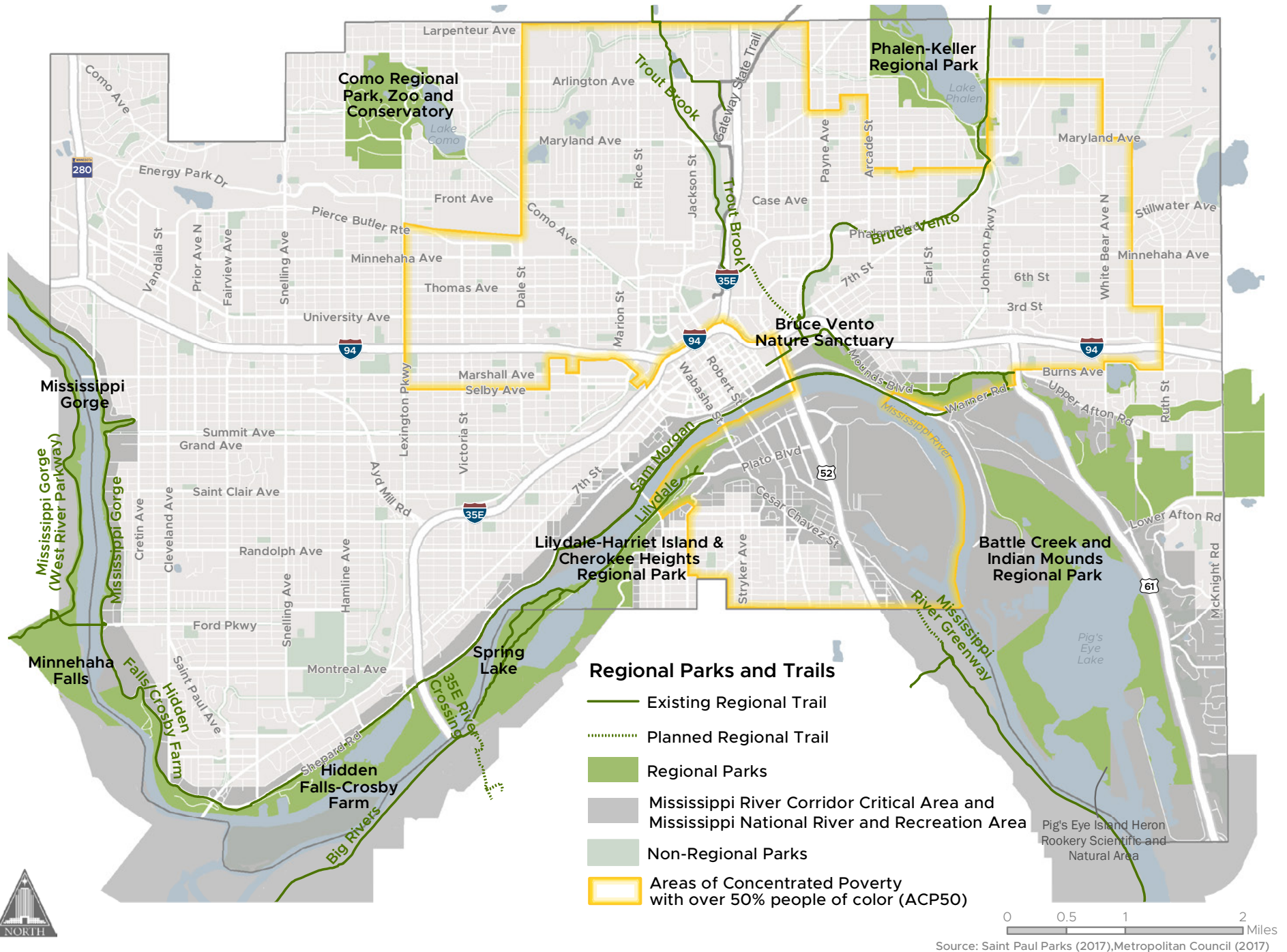
1. ACP50 data for all from Metropolitan Council via MN Geospatial Commons, from annual release (2/5/2018). Other data as noted.

2. The City of Saint Paul is in the process of redesigning its Capital Improvement Budget Process. An improvement plan from Parks and Recreation will be developed once the new process is in place and will be shared with the Metropolitan Council at that time.

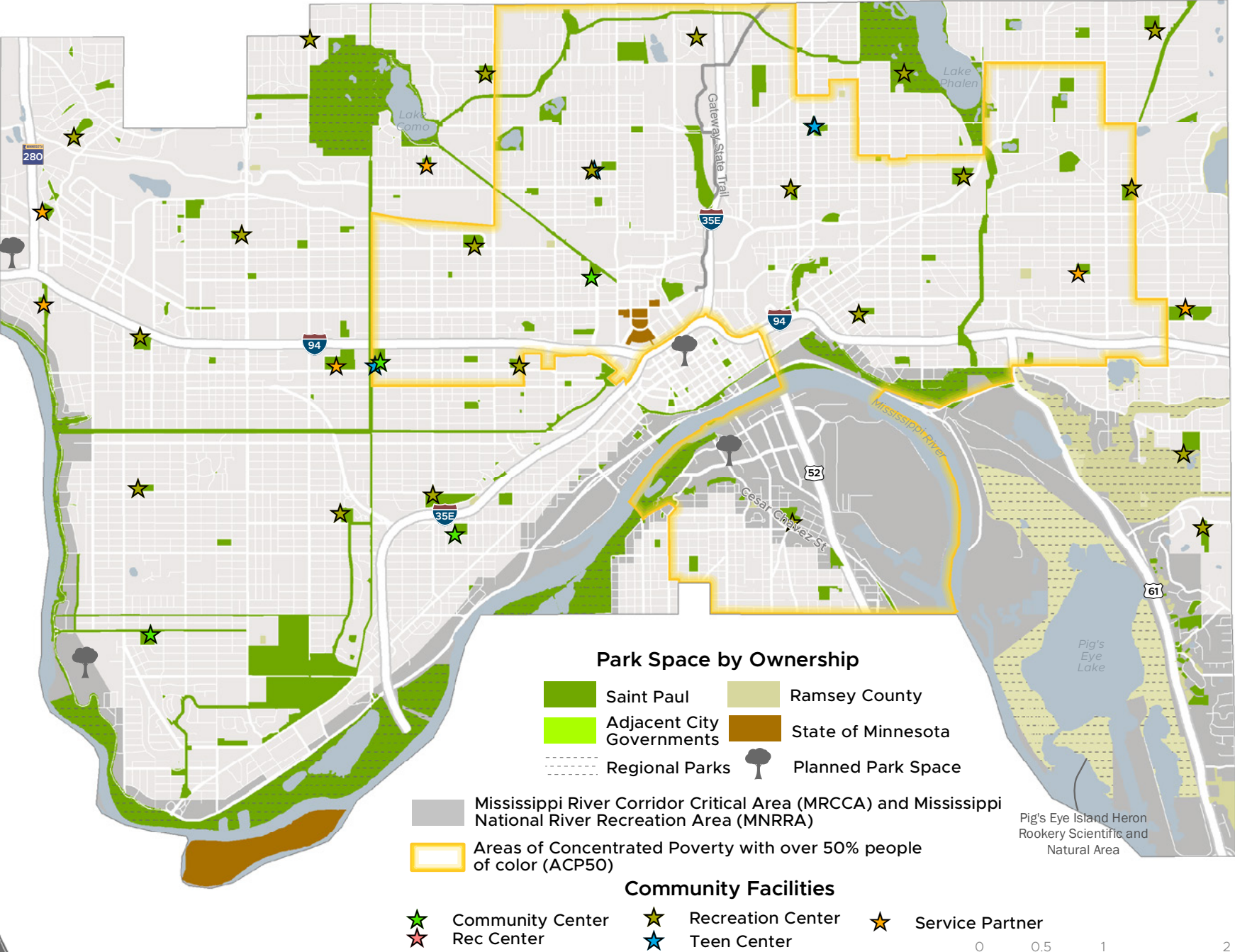
3. Local trails not associated with regional system are not included in these maps or descriptions. For more complete information on the trail system in Saint Paul, please see Map T-3, Bikeways or the Saint Paul Bicycle Plan.



## Map P-1: Regional Parks and Trails

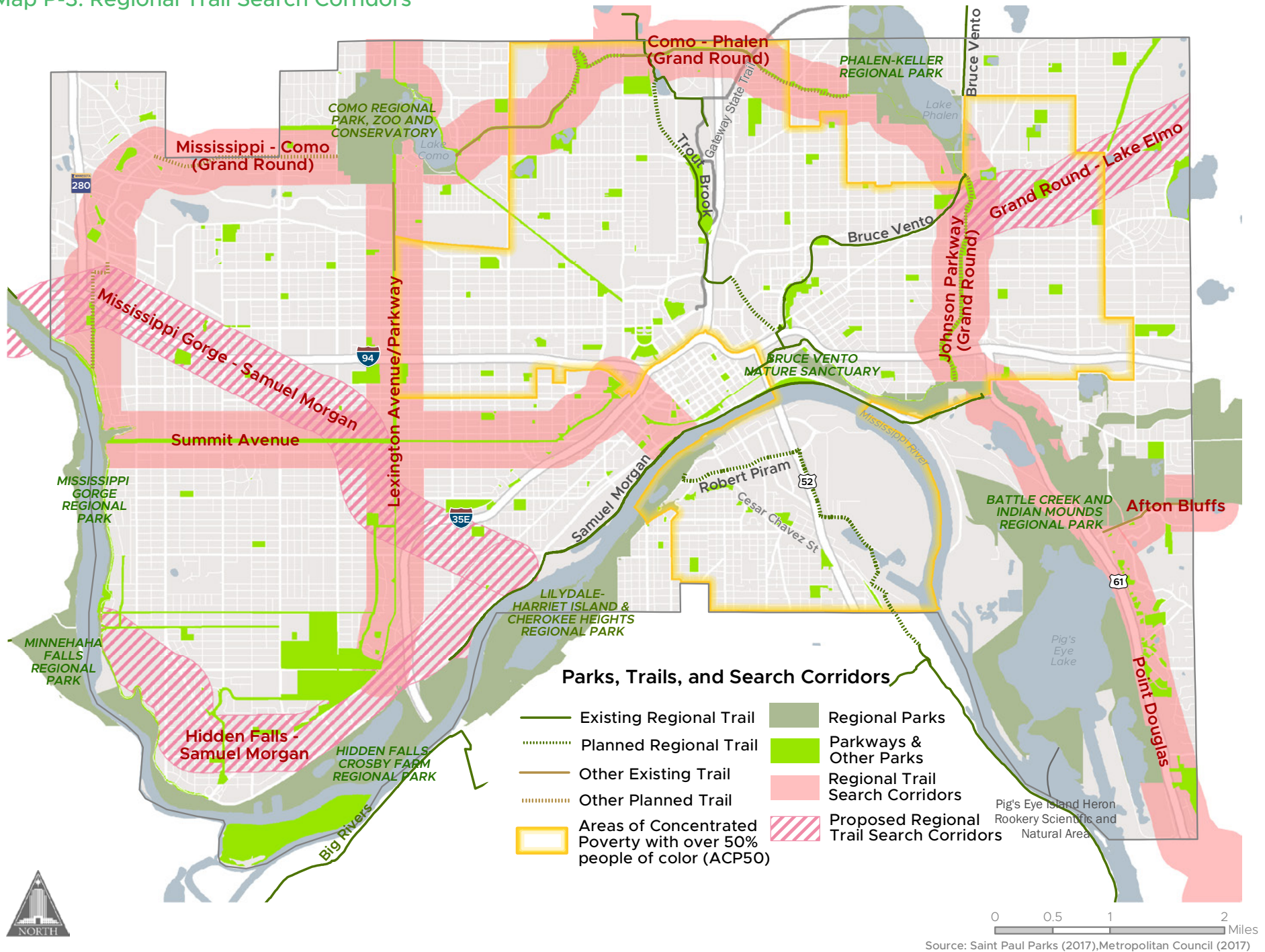


Map P-2: Existing and Proposed Local Parks





## Map P-3: Regional Trail Search Corridors



## Regional Trail Search Corridors

Regional trail corridors are intended to provide for recreational travel along linear pathways throughout the metropolitan area. To achieve regional trail status and be eligible for Regional Parks System funding, corridors must be part of a Metropolitan Council-approved master plan. Regional trail search corridors are proposed general trail alignments that have not yet been through that process.

## Regional Trail Search Corridor Descriptions

### 1. Mississippi - Como, Como - Phalen, Johnson Parkway

These three search corridors constitute the northern segment of the Grand Round, a city-wide loop originally conceived of in 1872 by Horace W.S. Cleveland. They would provide the connections between the Mississippi Gorge, Como, Phalen, and Indian Mounds Regional Parks.

### 2. Point Douglas

The Saint Paul segment of the Point Douglas search corridor extends from Indian Mounds Regional Park to the southern boundary of the city, generally paralleling Highway 61. The corridor will contain the main trail on the east side of the Mississippi River east of downtown, with the planned terminus being the Mississippi River Regional Trail in Washington County.

### 3. Summit Avenue

The Summit Avenue search corridor extends from the Mississippi Gorge Regional Park in the west to the Samuel Morgan Regional Trail near downtown in the east. The search area includes two National Historic Districts and two City of Saint Paul Heritage Preservation Districts and parallels Grand Avenue, one of the City's major commercial streets.

### 4. Lexington Avenue

The Lexington Avenue search corridor runs north and south and connects the Rice Creek North Regional trail to Hidden Falls - Crosby Farm Regional Park, and passes through Como Regional Park. Significant commercial and residential areas are present along the corridor, including Energy Park, the Green Line, Central High School, Oxford Community Center, and Grand Avenue.

### 5. Mississippi Gorge - Samuel Morgan (Proposed)

The Mississippi Gorge - Samuel Morgan corridor (also known as the Midtown Greenway Extension or the Saint Paul Greenway) parallels Interstate 94 and Ayd Mill Road, and would connect the northern reach of the Mississippi Gorge to the Samuel Morgan Regional Trail near Island Station.



#### 6. Hidden Falls - Samuel Morgan (Proposed)

The Hidden Falls - Samuel Morgan corridor (also known as the Canadian Pacific or Ford Spur) would connect Hidden Falls / Crosby Farm Regional Park to the Samuel Morgan Regional Trail near Island Station and link neighborhoods within the West 7th and Highland planning districts of Saint Paul. The Ford Spur was originally used to serve the Ford Twin Cities Assembly Plant (Ford Site), which closed in 2011. With the railway no longer in use and considering the physical barriers to the Samuel Morgan trail, there is potential for the Ford Spur to serve as a community and regional asset, providing opportunities for transportation, recreation, and economic development for the neighborhoods along the corridor.

#### 7. Grand Round - Lake Elmo (Proposed)

The Grand Round - Lake Elmo search corridor would connect the northeastern portion of the Grand Round near Phalen-Keller Regional Park to the Lake Elmo Park Reserve.

## Appendix B

### Regional Park and Trail Inventory

Regional Park Name	Acreage
Como Regional Park, Zoo and Conservatory	441.29
Hidden Falls - Crosby Farm Regional Park	569.49
Battle Creek and Indian Mounds Regional Park	624.39
Lilydale-Harriet Island & Cherokee Heights Regional Park	609.42
Mississippi Gorge Regional Park	87.63
Phalen-Keller Regional Park	505.28
Bruce Vento Nature Sanctuary	26.95
Trout Brook Nature Sanctuary	39.34
<b>TOTAL</b>	<b>2903.79</b>

Regional Trail Name	Mileage
Bruce Vento Regional Trail	6.53
Samuel H. Morgan Regional Trail	11.24
Trout Brook Regional Trail	0.72
<b>TOTAL</b>	<b>18.49</b>



## City-Owned Non-Regional Park Inventory

Notes: Totals do not represent the entirety of City-owned and maintained park and open space land, such as parkways. Sites managed by partner organizations are indicated by an asterisk (\*).

Park Name	Acreage
Alden Square Park	0.59
Aldine Park	1.76
Alice Park	0.55
Ames Lake Park	8.81
Arlington Arkwright Park	20.44
Arlington Hills Community Center	4.82
Baker Field*	5.59
Battle Creek Rec. Center	12.72
Bay Triangle	0.56
Belvidere Park	7.89
Bluff Park	6.21
Bluff Preservation	7.44
Bohland Triangle	0.18
Boyd Park	1.53
Burns Avenue Park	3.97
Cambridge Triangle	0.07
Capital View Park	0.28
Carty Park	3.62
Cathedral Hill Park	1.42
Cato Park	0.29
Cayuga Park	1.7
Central Village Park	4.14
CHS Field	10.58
Clayland Park	0.88
Cochran Park	0.55
College Park	5.19

Park Name	Acreage
Commonwealth Park	1.05
Como Ave Horseshoe Courts	0.77
Concord Park Field	2.79
Conway Field Rec Center*	21.63
Crocus Hill Terrace Park	1.87
Crocus Triangle	0.23
Cromwell Square	0.15
Culture Park	0.44
Dawson Park	1.99
Dayton's Bluff Rec. Center	5.99
Depot Tot Lot	0.17
Desnoyer Park*	2.14
Dickerman Park	2.42
Douglas Park	1.63
Dousman Park	0.47
Duluth and Case Rec. Center	11.42
Dunning Sports Complex*	20.53
Eagle Street Plaza Park	0.39
Eastview Rec. Center	6.08
Ecolob Plaza	0.5
Edgcumbe Rec. Center	7.08
El Rio Vista Rec. Center	5.68
Feronia Square	0.01
Forest Street Triangle	0.03
Fountain Park	0.45
Frogtown Park and Farm	12.77

## City-Owned Non-Regional Park Inventory (Continued)

Park Name	Acreage
Front Field	3.72
Frost Lake Park	6.76
Furness Parkway	23.4
Gordon Square	0.06
Griggs Field*	3.07
Groveland Rec. Center	3.73
Hamline and Hauge Park	0.58
Hamline Park	2.15
Hamm Memorial Plaza	0.13
Hamm Park	0.41
Hampden Park	3.08
Hayden Heights Rec. Center	8.31
Hazel Park Rec. Center	9.62
Hendon Triangles	0.93
Henry Park	11.15
High Bridge North Park	0.85
Highland Park	248.16
Highland Park Comm. Center	5.92
Highwood Preserve	18.08
Hillcrest Knoll Park	5.93
Holcombe Circle	0.18
Holly Park	0.34
Homecroft Park	3.24
Horton Park	3.48
Howell Park	0.76
Iris Park	1.84

Park Name	Acreage
Irvine Park	1.78
Kellogg Mall	2.78
Kenwood Park	0.19
Kidd Park	0.14
Landmark Plaza Park	0.64
Lane Place	0.93
Langford Rec. Center	9.99
Leroy Triangle	0.05
Lewis Park	2.89
Linwood Rec. Center	19.98
Lockwood Park	1.6
Lytton Park	0.35
Margaret Field*	3.65
Maria Ave. Triangle	0.04
Martin Luther King Jr. Rec. Center	2.78
Marydale Park	23.95
Maryland Ave. Open Space	5.04
Mattocks Park	3.69
May Park	0.81
McDonough Rec. Center	0
McDonough Preserve	7.14
McQuillan Park	0.54
Mears Park	2.09
Merriam Park Rec. Center	10.22
Midway Peace Park	5.4
Mounds Park Maintenance Building	4.51

## City-Owned Non-Regional Park Inventory (Continued)

Park Name	Acreage
Nathan Hale Park	0.5
Newell Park	12.1
North Dale Rec. Center	8.32
Oakland Terrace Park	0.84
Oakley Square	0.01
Orchard Rec. Center*	3.97
Oxford Comm. Center	10.66
Palace Rec. Center	5.88
Parque de Castillo	1.11
Pedro Park	0.45
Pelham Triangle	0.18
Point of View Park	0.36
Prospect Park	3.1
Prospect Terrace Park	1.07
Prosperity Heights Park	9.45
Prosperity Park	8.25
Rice Arlington Complex	23.31
Rice Park	1.62
Rice Rec. Center	5.98
Ryan Park	1.18
Sackett Park	13.28
Scheffer Rec. Center	3.65
Skidmore Park	0.39
South St. Anthony Rec. Center*	5.98
St. Clair Rec. Center*	6.43
Stinson Park	0.88

Park Name	Acreage
Stonebridge Oval	0.21
Summit Overlook	0.44
Summit Park	0.05
Swede Hollow Park	25.56
Sydney Triangle	0.12
Sylvan Park	3.18
Tatum Park	0.62
Taylor Park	3.72
Terrace Park	1.17
Tilden Park	1.61
Valley Park	12.78
Van Slyke Triangle	0.07
Victoria Park	50.19
Wacouta Commons	1.08
Walsh Park	0.78
Webster Park	4.38
Weida Park	1.54
West Minnehaha Rec. Center	10.85
Western Park	4.51
Wilder Rec. Center*	3.56
Willow Reserve	22.56
Xinia Triangle	0.22
<b>TOTAL</b>	<b>975.67</b>