

WebEx Success Tips and Tricks

- Please keep your cameras off
- You will be automatically muted when you join the meeting
- Do not put the WebEx on hold
- Make sure you do not have 2 audio functions on
(example: the phone and computer audio) this will cause an echo
- For best performance, close the internet except for the WebEx and close larger programs
- You will be muted by the host during the WebEx to minimize background disturbances and eliminate more than one person talking at a time
- For any questions please use the chat function - the questions will go to the entire group
- Questions will be answered as they are received

Highland Bridge PARKS ADVISORY COMMITTEE

MEETING FIVE

01.19.2021

RYAN CONFLUENCE



IN ASSOCIATION WITH THE

City of St. Paul

Department of Parks & Recreation



AGENDA

Introduction

Overview of Parks to Date

- Final Park A Design
- Final Park C Design
- Final Park B Design
- Final Park D Design

Park Naming Process

Park Amenities update for park system

Next Steps

- Construction update
- Future site visit for PAC



Project Team Contacts



Nick Koch

Ryan Companies
Phone: 612-492-4678
Nick.Koch@RyanComapnies.com



Mac Alberts

Ryan Companies
Phone: 612-492-4313
Mac.Alberts@RyanCompanies.com



Tony Barranco

Ryan Companies
Phone: 612-492-4339
Tony.Barranco@RyanCompanies.com



Maureen Michalski

Ryan Companies
Phone: 612-492-4603
Maureen.Michalski@RyanCompanies.com



Ellen Stewart

Parks and Recreation
Phone: 651-266-6380
Ellen.Stewart@ci.stpaul.mn.us



Terry Minarik

Confluence
Phone: 612-333-3702 x501
TMinarik@ThinkConfluence.com



Brad Aldrich

Confluence
Phone: 612-333-3702 x503
BAldrich@ThinkConfluence.com

Project Background

Ford Site Project Studies

Since 2006, when Ford Motor Company announced its intent to close the plant, the City of Saint Paul has been working actively to plan for the site's future.

Professional Studies

- A total of 14 professional studies conducted by the City and additional studies by Ford Motor Company have examined a wide range of topics, such as the potential of industrial reuse, a geotechnical analysis of the tunnels under the site, open space priorities, sustainable design, stormwater management, and traffic impacts.
- The studies were essential to understand opportunities for and limitations on the redevelopment of the site – economically, environmentally, socially, and within the context of the community. The studies identified infrastructure efficiencies, cost-effectiveness, opportunities for environment design and conservation, and how to strike a balance between development and the creation of vibrant public spaces
- The Ford Site Zoning and Public Realm Master Plan, adopted by the Saint Paul City Council in 2017, is the culmination of a decade of planning for the site. It provides a framework to guide mixed-use redevelopment of the 122-acre main assembly plant parcel and the adjacent 13-acre rail yard. It does not include the 22-acre river parcel ("Area C").

Community Engagement and Adoption

- Since 2007, the City has been seeking the community and other stakeholders' visions and priorities for the Ford site. The thousands of ideas and suggestions that we have received over the past 10 years, and through more than 140 public meetings of all sizes, have shaped the redevelopment framework for the site.

<https://www.stpaul.gov/departments/planning-economic-development/planning/ford-site-21st-century-community>

Role of Parks Advisory Committee (PAC)

The Parks Advisory Committee provides volunteer opportunities for stakeholders to share insight and resources and serve to build and sustain relationships between the community and the City of St. Paul. Members of the PAC are expected to represent the views of park users and to work collaboratively with each other and the project team to provide insight, feedback and information to the community about the project.

Responsibilities of PAC members include:

- Become knowledgeable about the Project and its goals,
- Understand and represent the park and recreation needs of the community and park users,
- Act as community liaisons for the project,
- Provide feedback on the park plans,
- Help identify priorities and needs within the Park System and within their communities,
- Provide insight on the direction of Park development,
- Report back to the community, on the design process, information presented, and the development of the parks,
- PAC members are expected to attend and participate in PAC meetings throughout the design process.

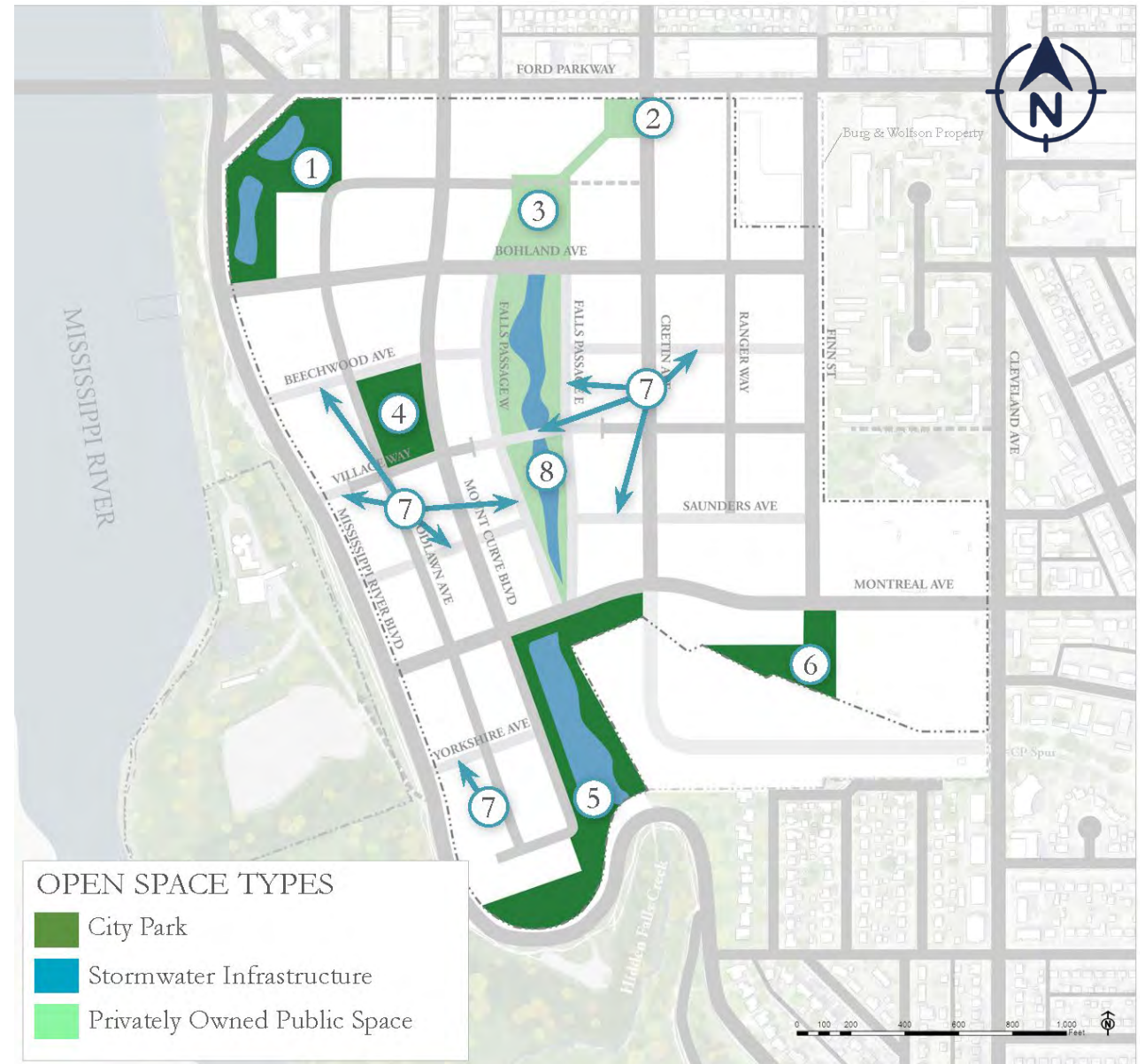
Highland Bridge Park System

City Parks

- ① Park A
- ④ Park B
- ⑤ Park C
- ⑥ Park D

Civic Parks

- ② Outlot B
- ③ Outlot C
- ⑧ Outlot D
- ⑦ Shared Bike/Ped Paths



Highland Bridge Timeline | Milestones

- **Park A and Park C**
 - Stormwater Construction Started in Park A and C
- *Outlot C & Outlot D*
 - Construction Started
- **Park B and Park D**
 - 100% Plans Completed
 - Construction – 2022

Questions or Comments?

Please let us know if you have any comments or questions regarding the information that has been presented so far and we will respond to them as we receive them.

Comments to Date – what we have heard

Highland Bridge Park Designs

Public Survey Comments

We utilized the comments from the public to direct and finalize the final design and amenities for each park as part of the overall park system. Factors relating to budget, fit and overall park system needs also played a role in the final layouts. Full comments are available on the City's website under the Community Engagement documents for the project.

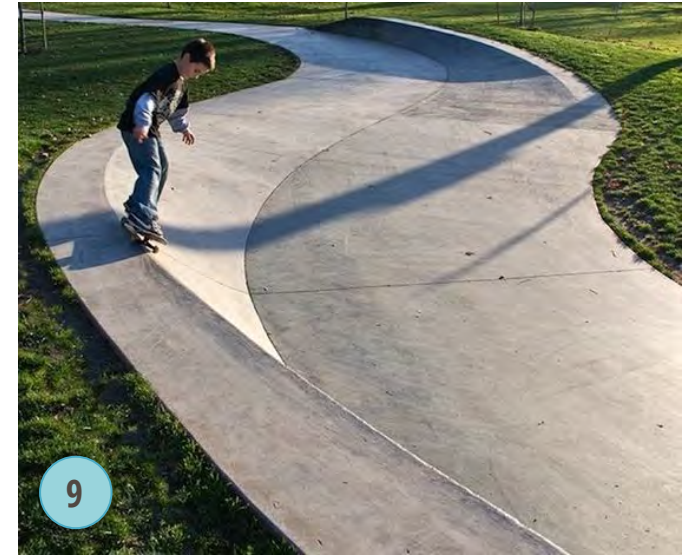
Design Park A



Design Park A



Park A – Skate Components

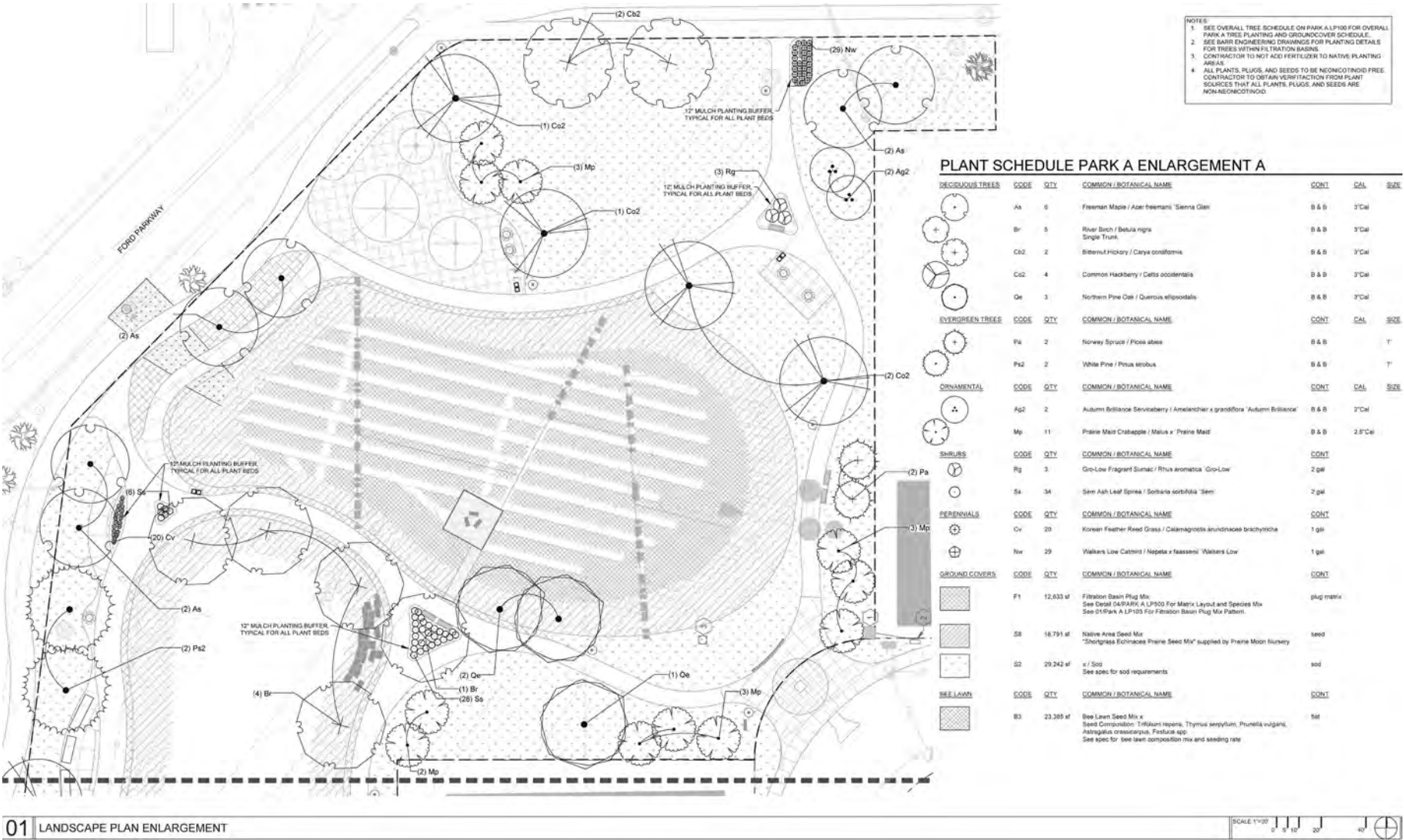


Park A – Park Components

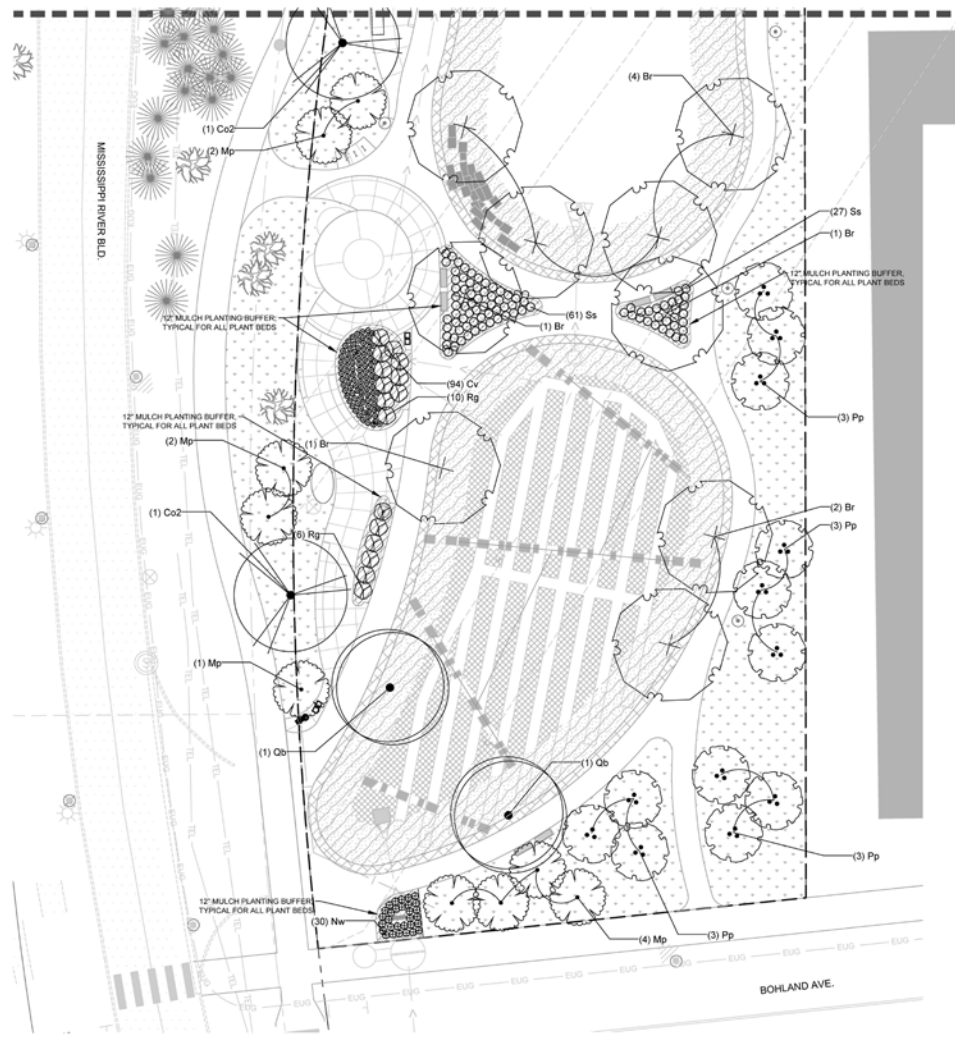


Highland Bridge

Design Park A Plan



Design Park A Plan



01 LANDSCAPE PLAN ENLARGEMENT

PLANT SCHEDULE PARK A ENLARGEMENT B

DECIDUOUS TREES	CODE	QTY	COMMON / BOTANICAL NAME	CONT	CAL
	Br	9	River Birch / Betula nigra Single Trunk	8 & 8	3' Cal
	Co2	2	Common Hackberry / Celtis occidentalis	8 & 8	3' Cal
	Pp	12	Prairie Gold Aspen / Populus tremuloides 'NE AR'	8 & 8	2.5' Cal
	Qb	2	Swamp White Oak / Quercus bicolor	8 & 8	3' Cal
ORNAMENTAL	CODE	QTY	COMMON / BOTANICAL NAME	CONT	CAL
	Mp	9	Prairie Maid Crabapple / Malus x 'Prairie Maid'	8 & 8	2.5' Cal
SHRUBS	CODE	QTY	COMMON / BOTANICAL NAME	CONT	
	Rg	16	Gro-Low Fragrant Sumac / Rhus aromatica 'Gro-Low'	2 gal	
	Sa	89	Sem Ash Leaf Spirea / Sorbaria sorbifolia 'Sem'	2 gal	
PERENNIALS	CODE	QTY	COMMON / BOTANICAL NAME	CONT	
	Cv	94	Korean Feather Reed Grass / Calamagrostis arundinacea brachytricha	1 gal	
	Nw	30	Walkers Low Catmint / Nepeta x faassenii 'Walkers Low'	1 gal	
GROUND COVERS	CODE	QTY	COMMON / BOTANICAL NAME	CONT	
	F1	5,441 sf	Filtration Basin Plug Mix See Detail 04PARK A LP500 For Matrix Layout and Species Mix See 01PARK A LP100 For Filtration Basin Plug Mix Pattern.	plug matrix	
	S8	5,678 sf	Native Area Seed Mix "Shortgrass Echinacea Prairie Seed Mix" supplied by Prairie Moon Nursery	seed	
	S2	27,001 sf	x / Sod See spec for sod requirements	sod	
BEE LAWN	CODE	QTY	COMMON / BOTANICAL NAME	CONT	
	B3	1,533 sf	Bee Lawn Seed Mix x Seed Composition: Trifolium repens, Thymus serpyllum, Prunella virginica, Astragalus creoscarpus, Festuca spp. See spec for bee lawn composition mix and seeding rate	flat	

NOTES:
1. SEE OVERALL TREE SCHEDULE ON PARK A LP100 FOR OVERALL PARK A TREE PLANTING AND GROUND COVER SCHEDULE.
2. SEE SAME ENGINEERING DRAWINGS FOR PLANTING DETAILS FOR TREES WITHIN FILTRATION BASINS.
3. CONTRACTOR TO NOT ADD FERTILIZER TO NATIVE PLANTING AREAS.
4. ALL PLANTS, PLUGS, AND SEEDS TO BE NEONCOTINOID FREE. CONTRACTOR TO OBTAIN VERIFICATION FROM PLANT SOURCES THAT ALL PLANTS, PLUGS, AND SEEDS ARE NON-NEONCOTINOID.



Design Park C



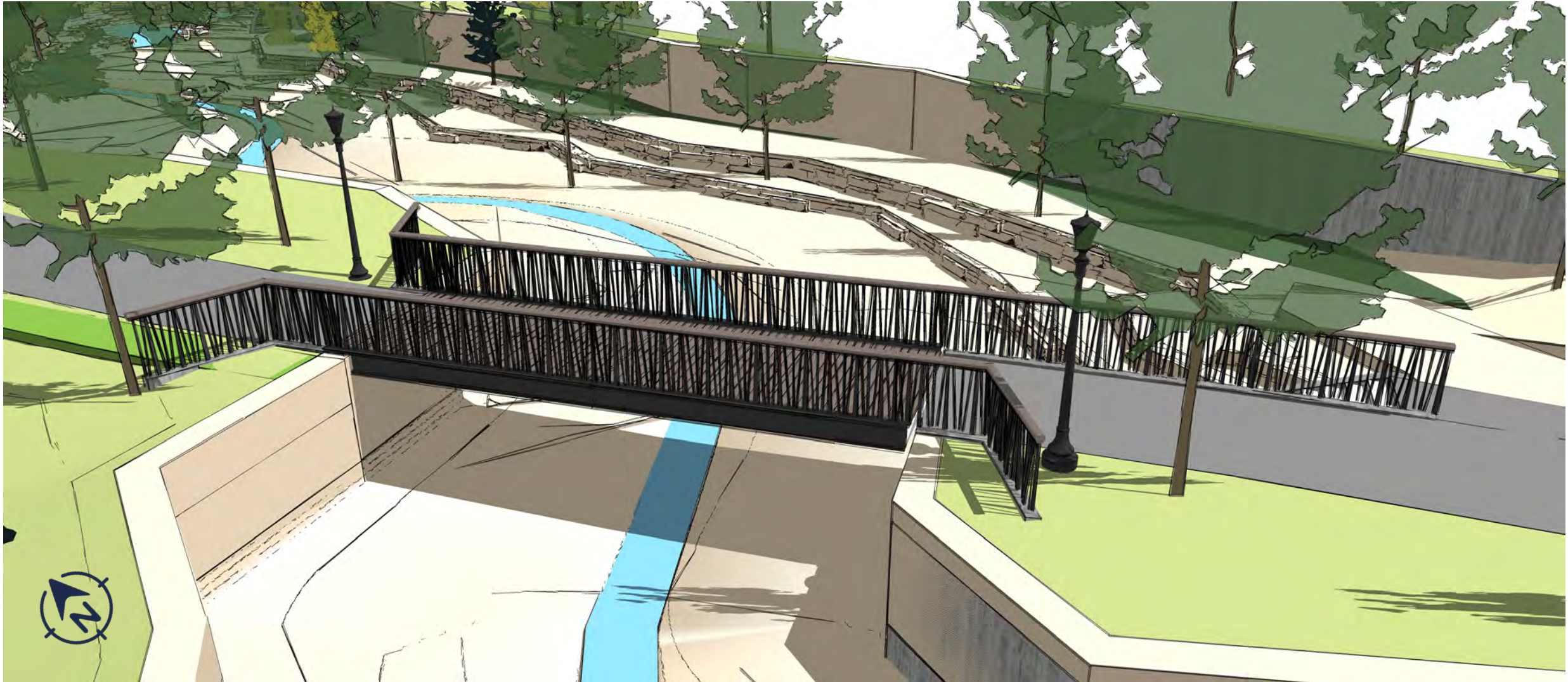
Design Park C



Design Park C

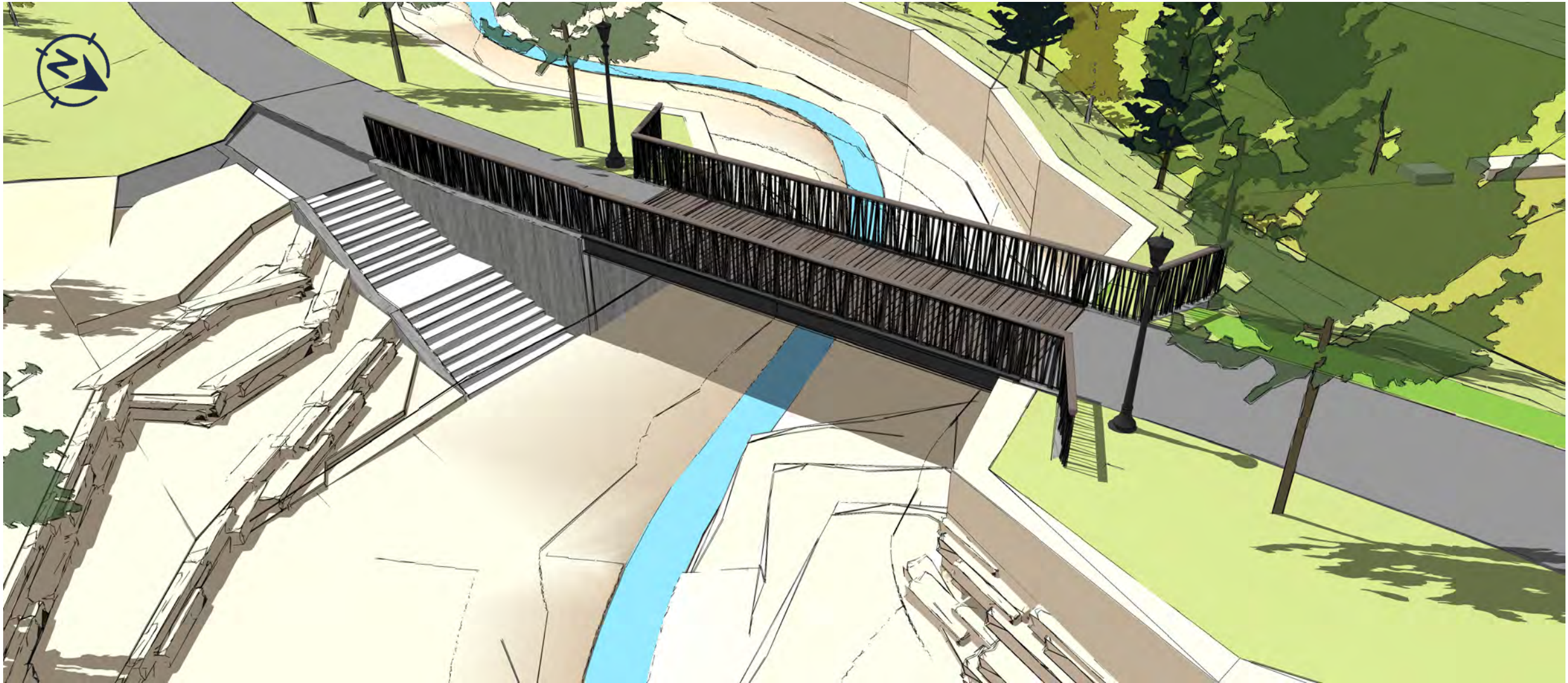


Design Park C



Highland Bridge

Design Park C



Highland Bridge

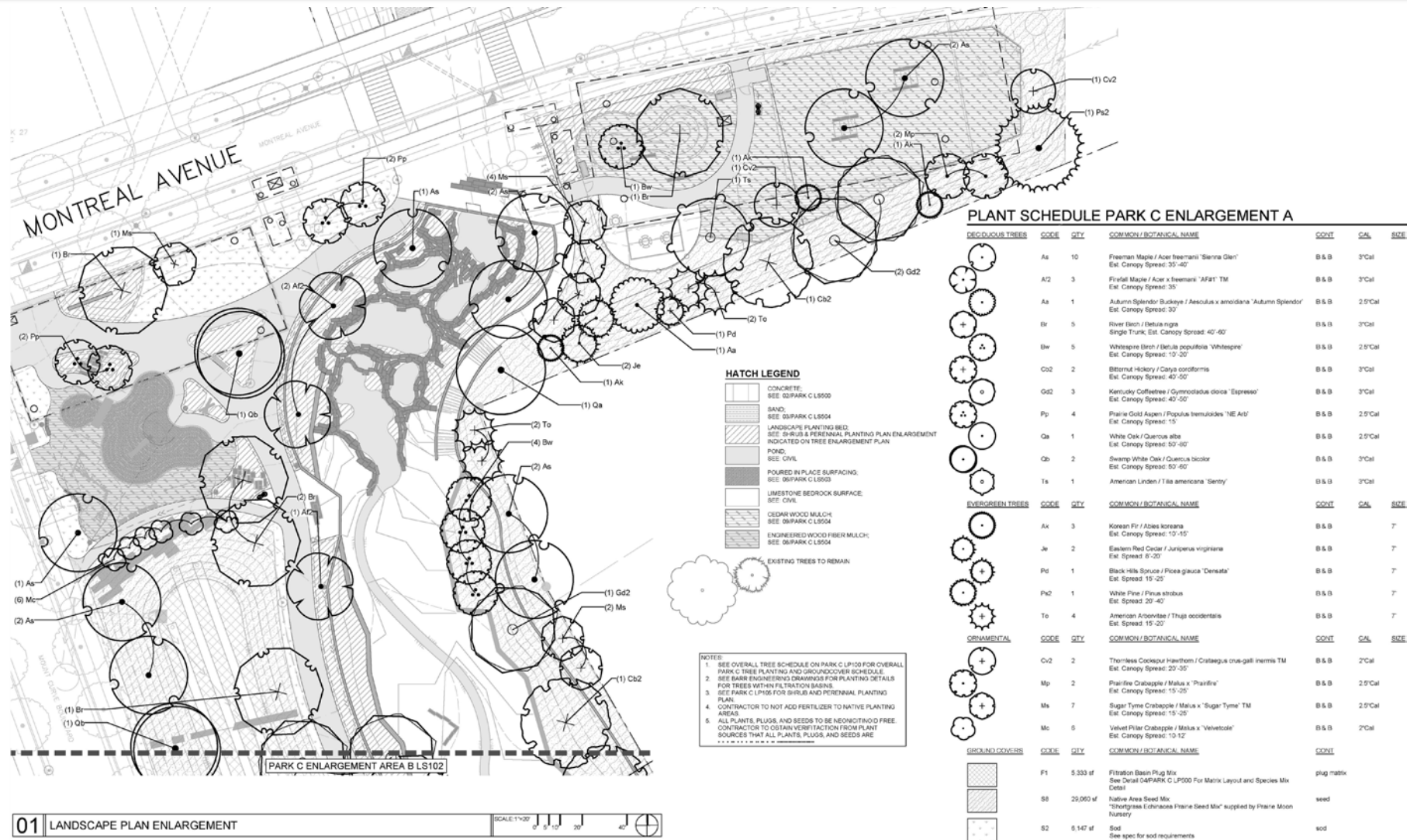
Design Park C – Ravine Character



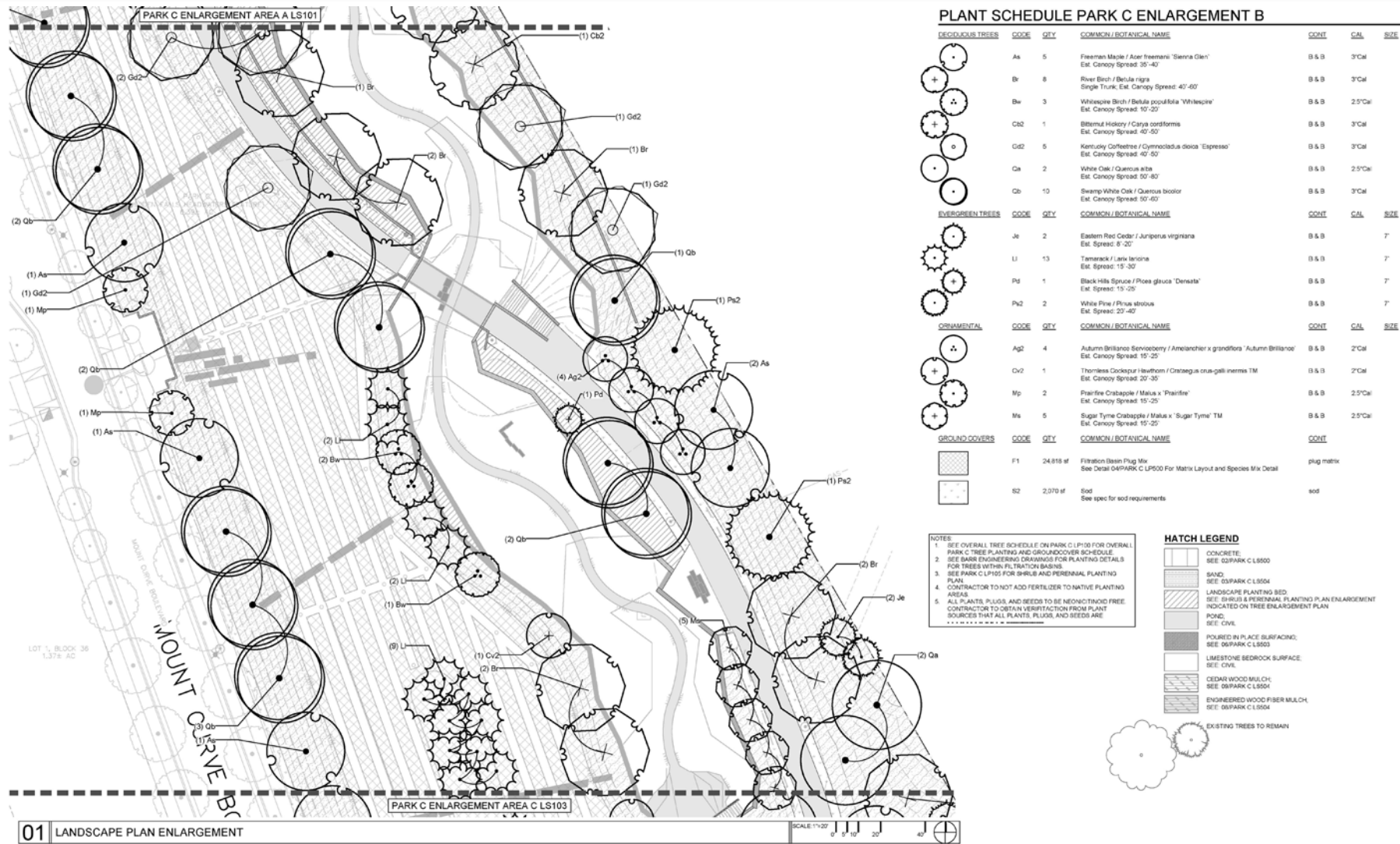
Highland Bridge



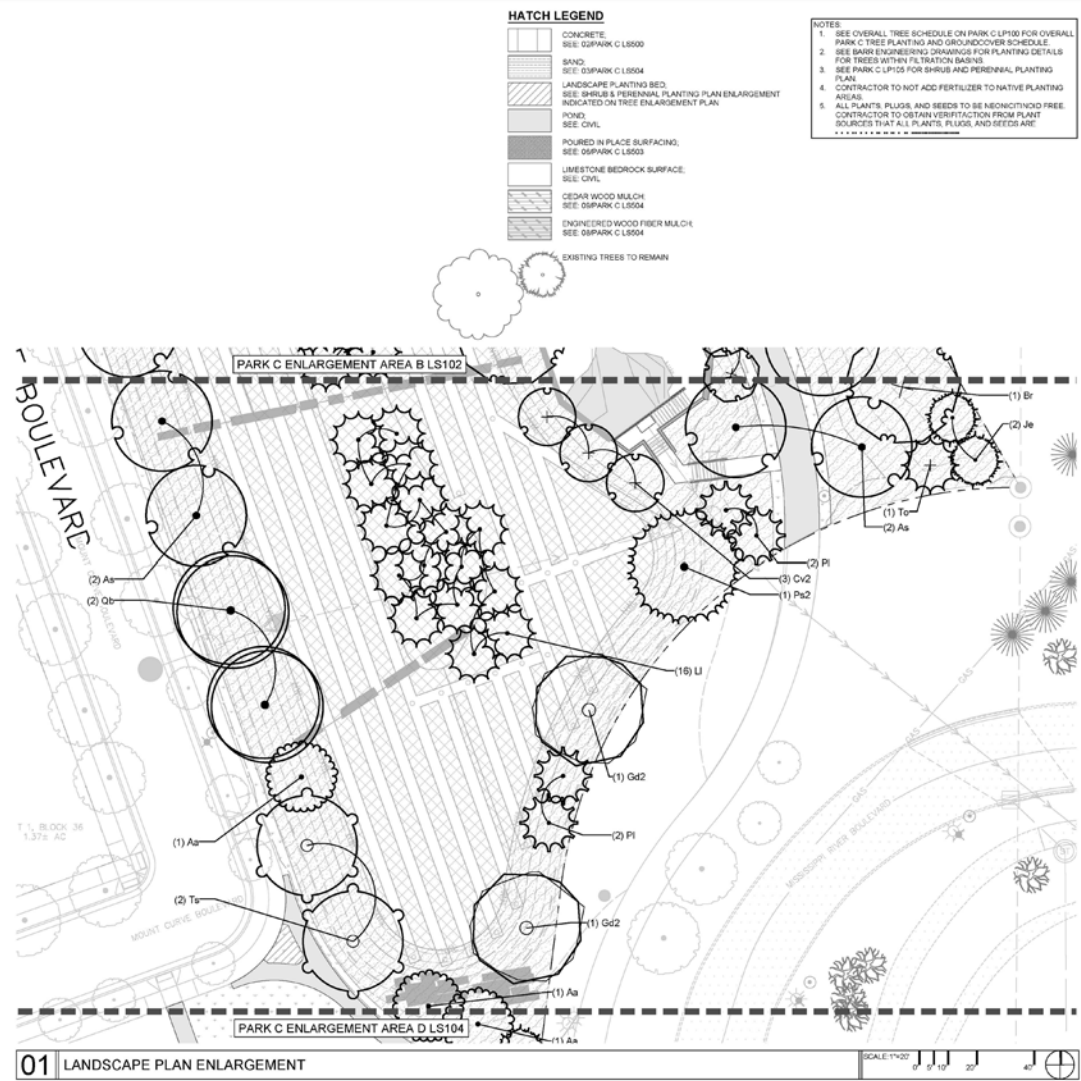
Design Park C Plan



Design Park C Plan



Design Park C Plan



PLANT SCHEDULE PARK C ENLARGEMENT C

DECIDUOUS TREES	CODE	QTY	COMMON / BOTANICAL NAME	CONT	CAL	SIZE
	As	4	Freeman Maple / Acer Freemani 'Sierra Glen' Est. Canopy Spread: 30'-40'	8.5 B	3" Cal	
	Aa	2	Autumn Splendor Buckeye / Aesculus x emoidens 'Autumn Splendor' Est. Canopy Spread: 30'	8.5 B	2.5" Cal	
	Br	1	River Birch / Betula nigra Single Trunk; Est. Canopy Spread: 40'-60'	8.5 B	3" Cal	
	Gd2	2	Kentucky Coffeetree / Gymnocladus dioica 'Espresso' Est. Canopy Spread: 40'-50'	8.5 B	3" Cal	
	Qb	2	Swamp White Oak / Quercus bicolor Est. Canopy Spread: 50'-60'	8.5 B	3" Cal	
	Ts	2	American Linden / Tilia americana 'Sentry'	8.5 B	3" Cal	
EVERGREEN TREES	CODE	QTY	COMMON / BOTANICAL NAME	CONT	CAL	SIZE
	Je	2	Eastern Red Cedar / Juniperus virginiana Est. Spread: 6'-20'	8.5 B	7"	
	Li	16	Tamarack / Larix laricina Est. Spread: 15'-30'	8.5 B	7"	
	Pi	4	Royal Splendor Norway Spruce / Picea abies 'Noel' Est. Spread: 20'	8.5 B	7"	
	Ps2	1	White Pine / Pinus strobus Est. Spread: 20'-40'	8.5 B	7"	
	To	1	American Arborvitae / Thuja occidentalis Est. Spread: 15'-30'	8.5 B	7"	
ORNAMENTAL	CODE	QTY	COMMON / BOTANICAL NAME	CONT	CAL	SIZE
	Cv2	3	Thornless Crapeheart Hawthorn / Crataegus crus-galli inermis TM Est. Canopy Spread: 20'-30'	8.5 B	2" Cal	
GROUND COVERS	CODE	QTY	COMMON / BOTANICAL NAME	CONT		
	F1	9,076 sf	Filtration Basin Plug Mix See Detail GSPARK C LPI200 For Matrix Layout and Species Mix Detail	plug matrix		
	S8	1,305 sf	Native Area Seed Mix "Shongpass Schribera Prairie Seed Mix" supplied by Prairie Moon Nursery	seed		
	S2	223 sf	Sod See spec for sod requirements	sod		



Design Park C



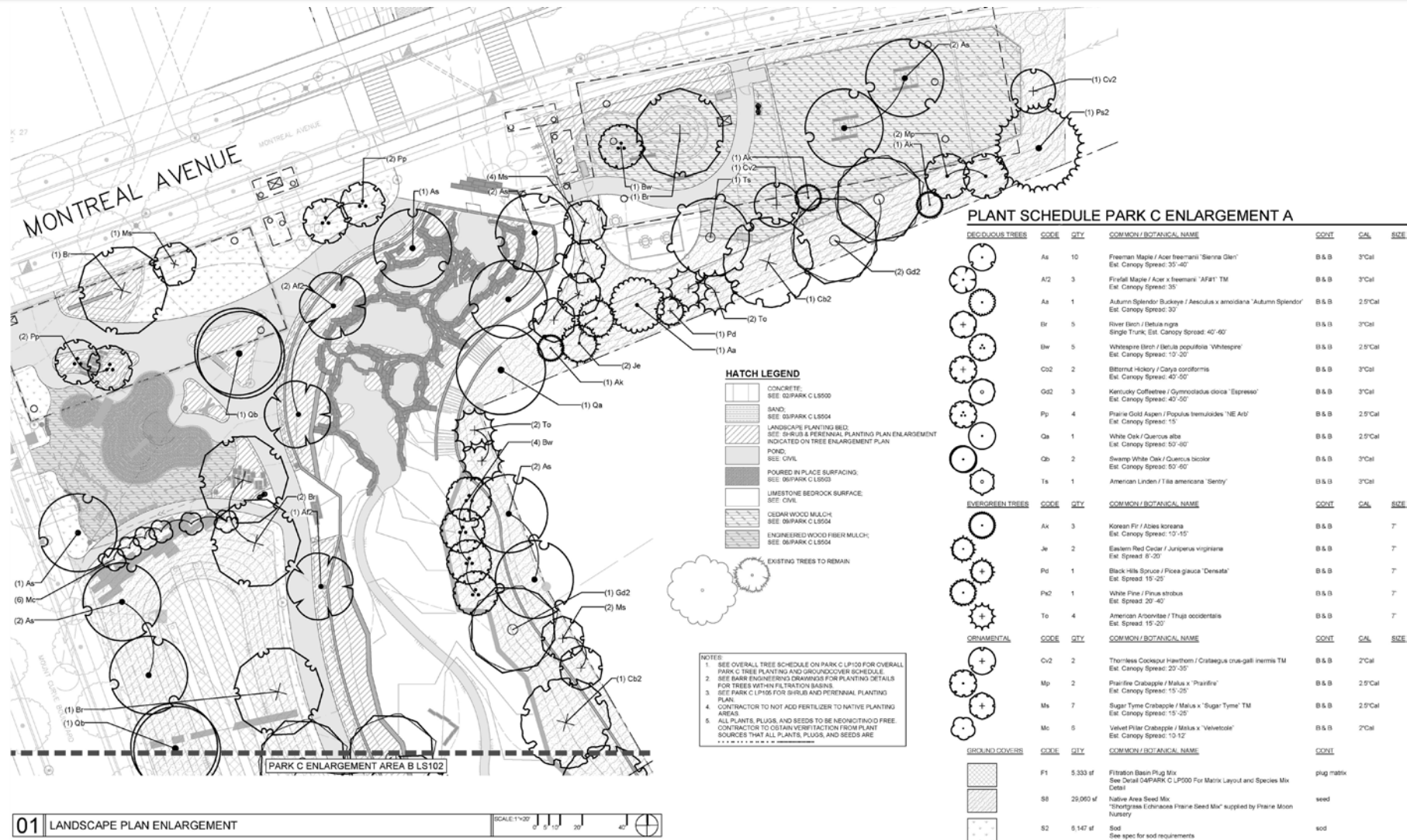
Design Park C



Design Park C



Design Park C Plan



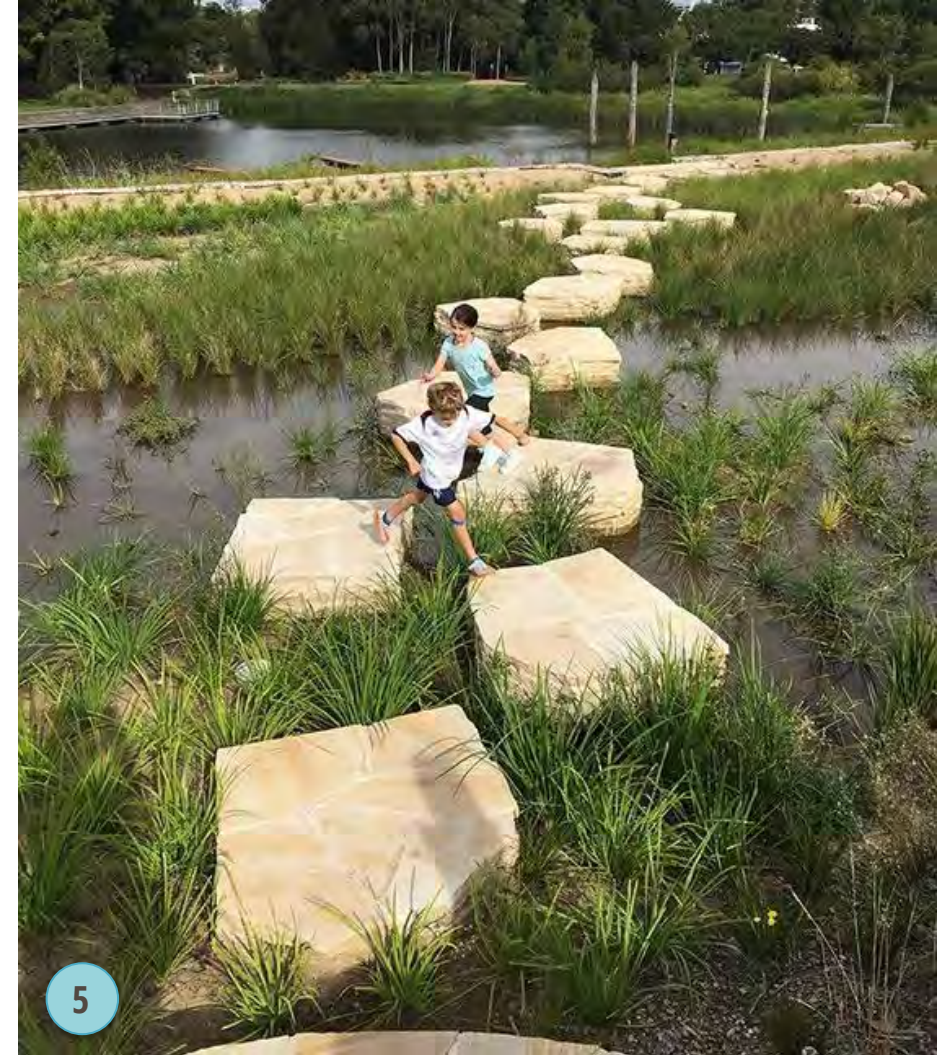
Design Park C



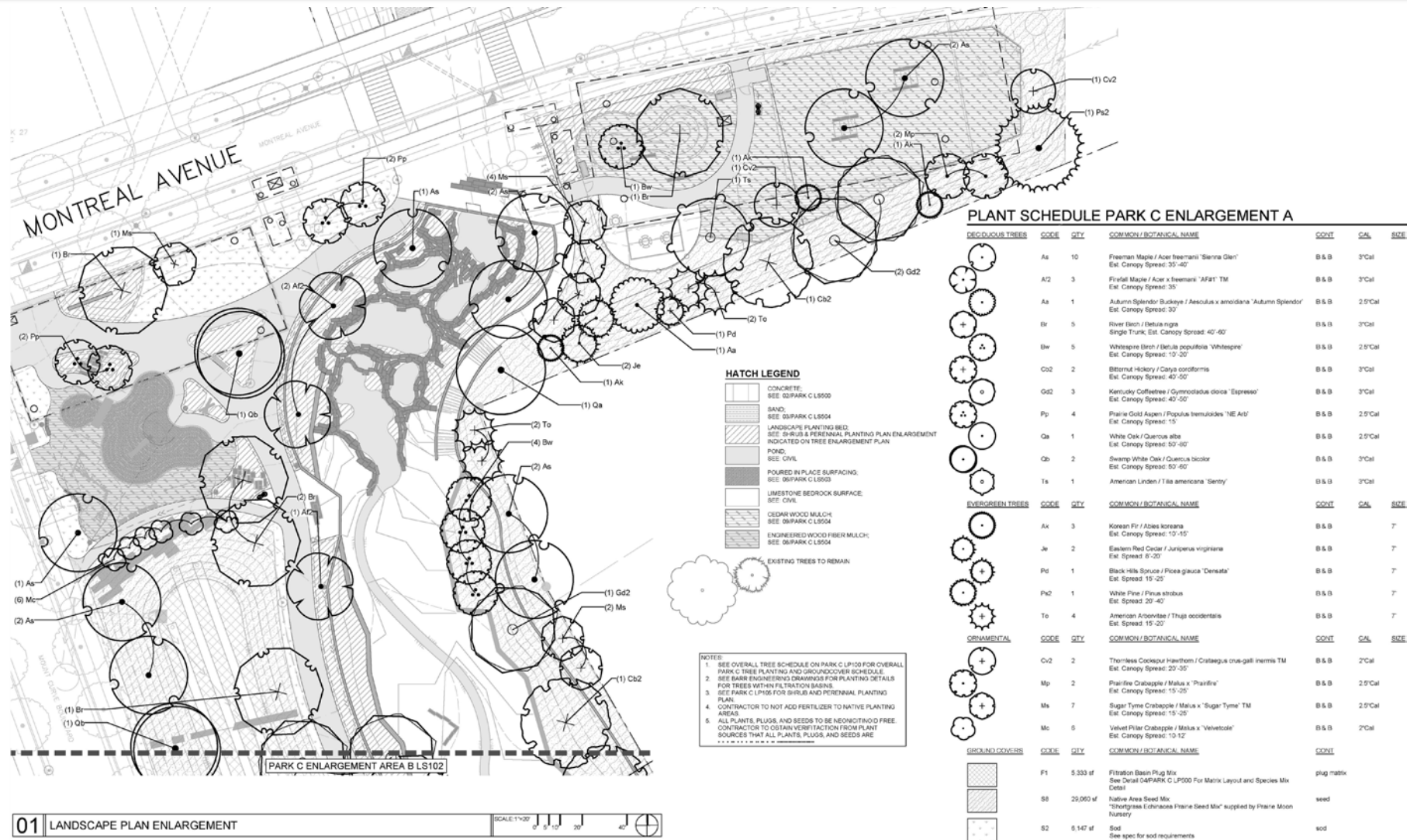
Design Park C



Design Park C – Amenities



Design Park C Plan



Design Park C



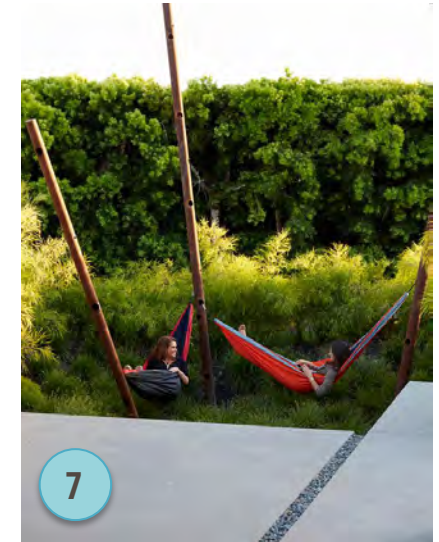
Design Park C



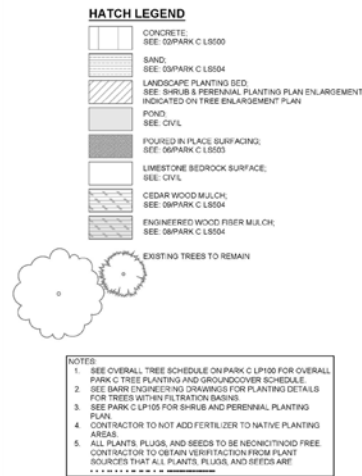
Design Park C



Design Park C – South Park Amenities

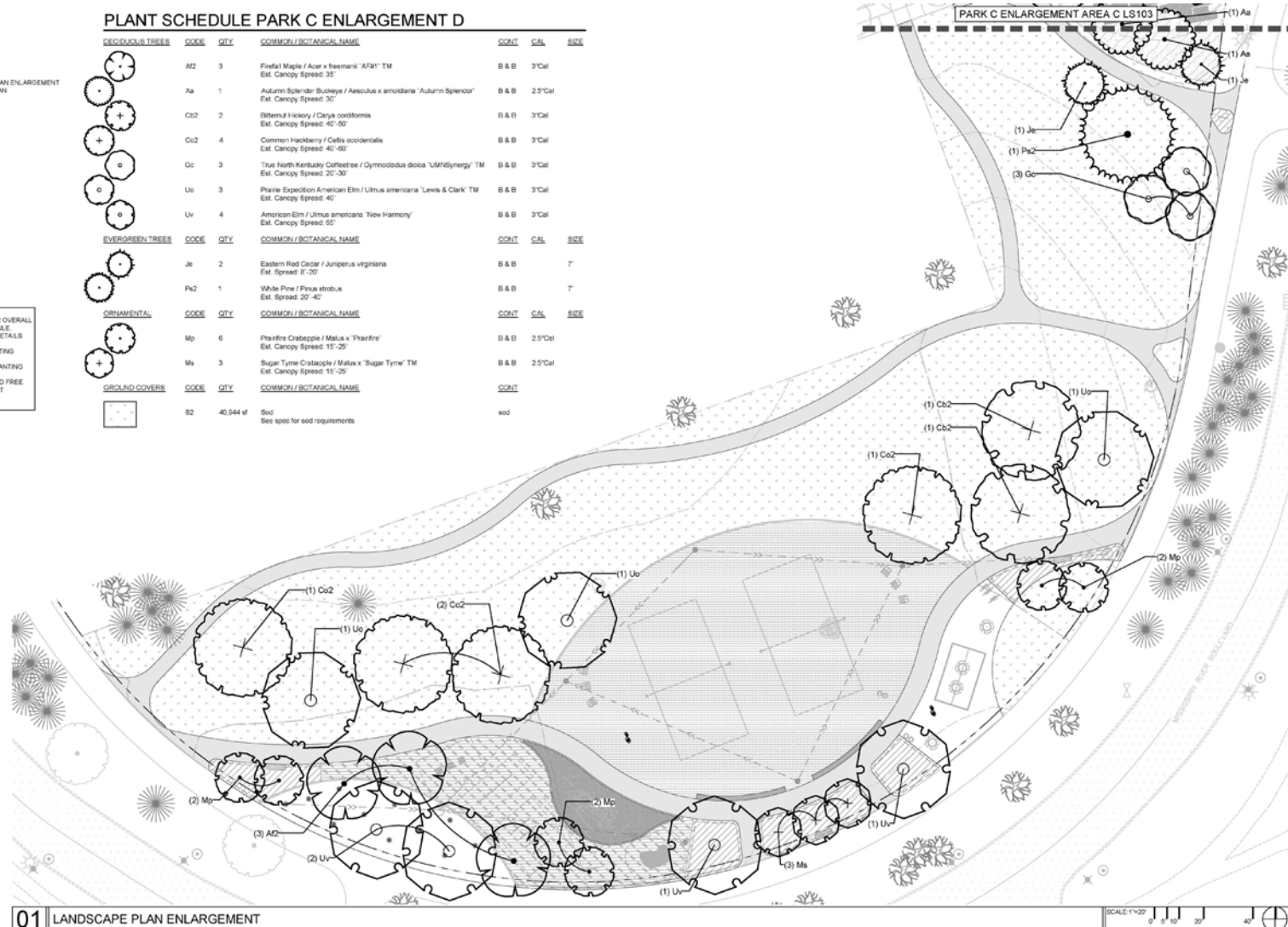


Design Park C Plan



PLANT SCHEDULE PARK C ENLARGEMENT D

<u>DECIDUOUS TREES</u>	<u>CODE</u>	<u>QTY</u>	<u>COMMON / BOTANICAL NAME</u>	<u>CONT.</u>	<u>CAL.</u>	<u>SIZE</u>
	A2	3	Redleaf Maple / Acer x freemianii "AFR1" TM Est. Canopy Spread 35'	B & B	3'Cal	
	Aa	1	Autumn Splendor Buckeye / Aesculus x amotiana "Autumn Spencer" Est. Canopy Spread: 30'	B & B	2.5'Cal	
	C02	2	Bitternut Hickory / Carya cordiformis Est. Canopy Spread: 40'	B & B	3'Cal	
	C02	4	Common Hackberry / Celtis occidentalis Est. Canopy Spread: 40'-60'	B & B	3'Cal	
	Gc	3	True North Kentucky Coffee tree / Gymnocladia dioica "UM/Nylmery" TM Est. Canopy Spread: 20'-30'	B & B	3'Cal	
	Uo	3	Pearlie Expedition American Elm / Ulmus americana "Lewis & Clark" TM Est. Canopy Spread: 40'	B & B	3'Cal	
	Uv	4	American Elm / Ulmus americana "New Harmony" Est. Canopy Spread: 65'	B & B	3'Cal	
<u>EVERGREEN TREES</u>	<u>CODE</u>	<u>QTY</u>	<u>COMMON / BOTANICAL NAME</u>	<u>CONT.</u>	<u>CAL.</u>	<u>SIZE</u>
	Je	2	Eastern Red Cedar / Juniperus virginiana Est. Spread: 8'-20'	B & B	7'	
	Px2	1	White Pine / Pinus strobus Est. Spread: 20'-40'	B & B	7'	
<u>ORNAMENTAL</u>	<u>CODE</u>	<u>QTY</u>	<u>COMMON / BOTANICAL NAME</u>	<u>CONT.</u>	<u>CAL.</u>	<u>SIZE</u>
	Mp	6	Pineapple Crapeapple / Malus x "Fairyfire" Est. Canopy Spread: 15'-25'	B & B	2.5'Cal	
	Mx	3	Sugar Tree Crapeapple / Malus x "Sugar Tyne" TM Est. Canopy Spread: 15'-25'	B & B	2.5'Cal	
<u>GROUND COVERS</u>	<u>CODE</u>	<u>QTY</u>	<u>COMMON / BOTANICAL NAME</u>	<u>CONT.</u>		
	S2	40,944 sf	Sod See spec for seed requirements	sod		



Questions or Comments?

Please let us know if you have any comments or questions regarding the information that has been presented so far and we will respond to them as we receive them.

Design Park B



Highland Bridge

Design Park B



Design Park B



Park B – Park Components



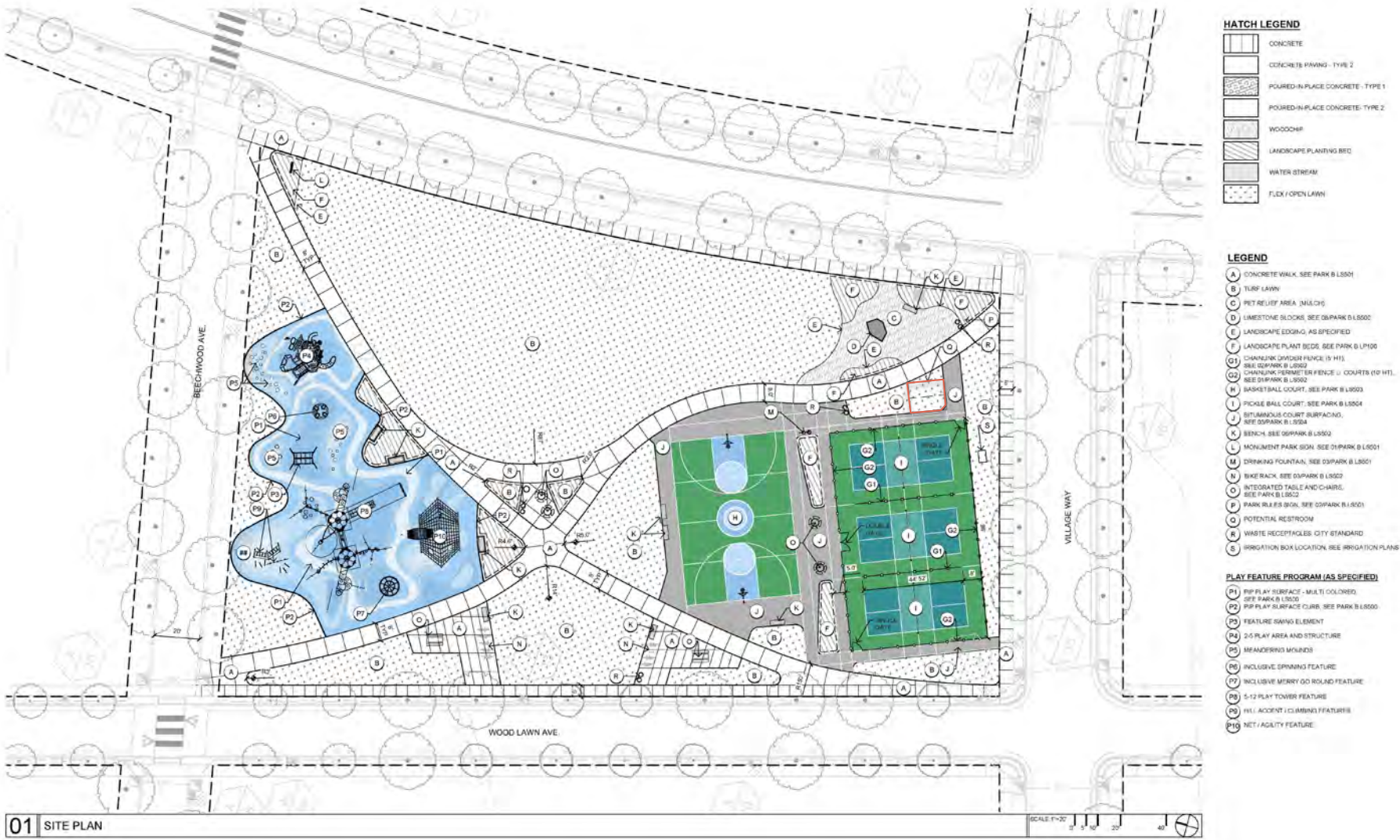
Park B – Park Components



Highland Bridge



Design Park B Plan



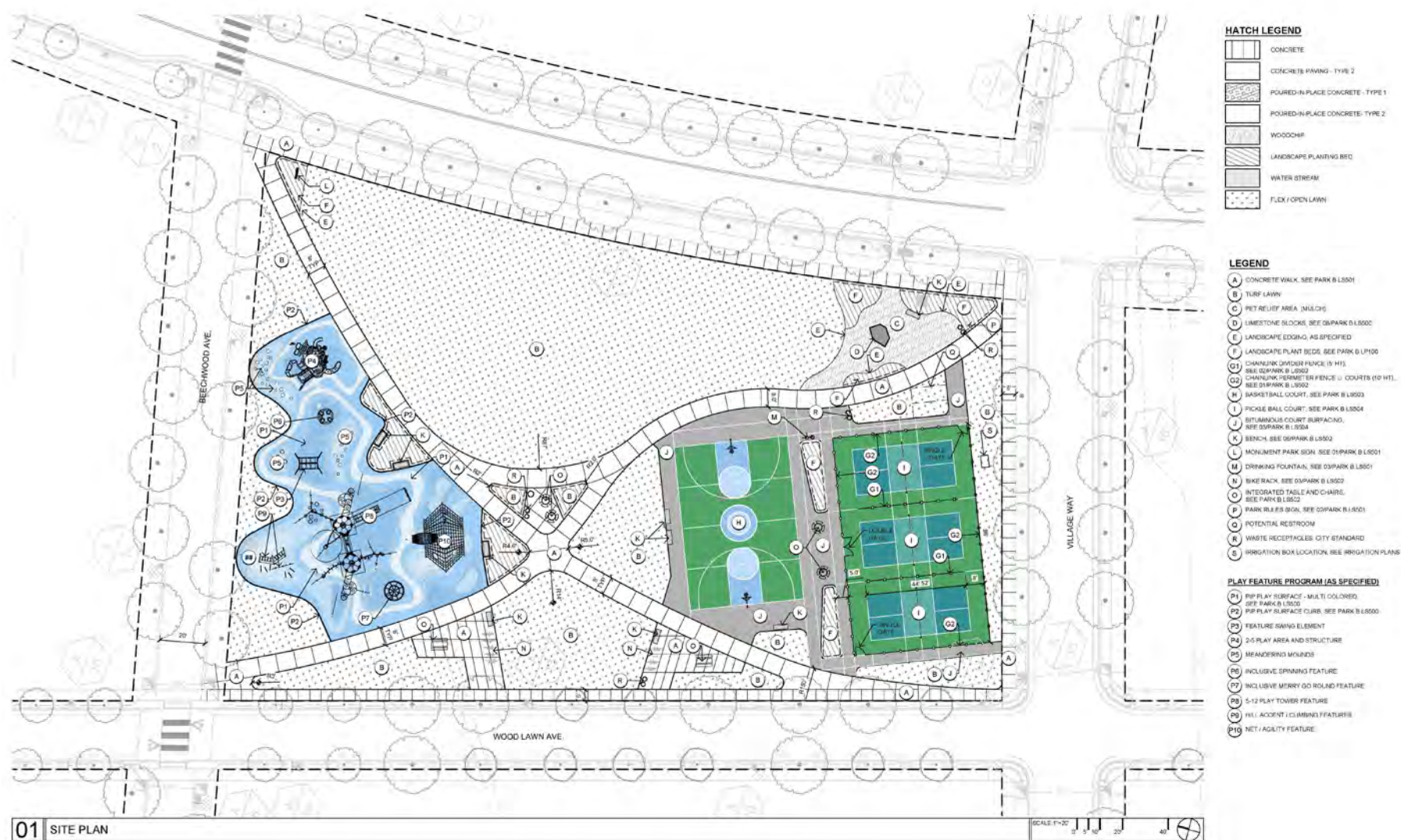
Design Park B



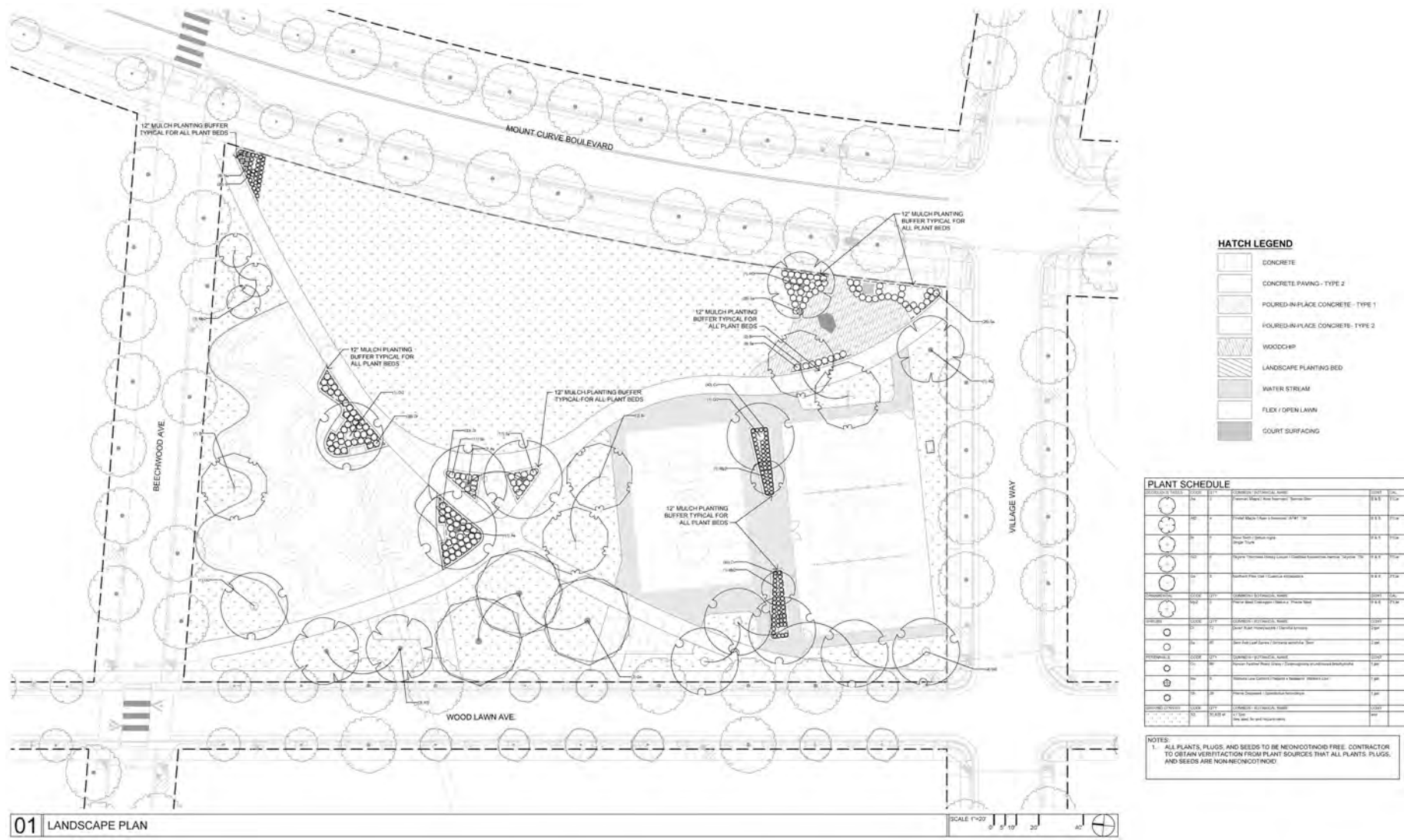
Park B – Park Components



Design Park B Plan



Design Park B Plan



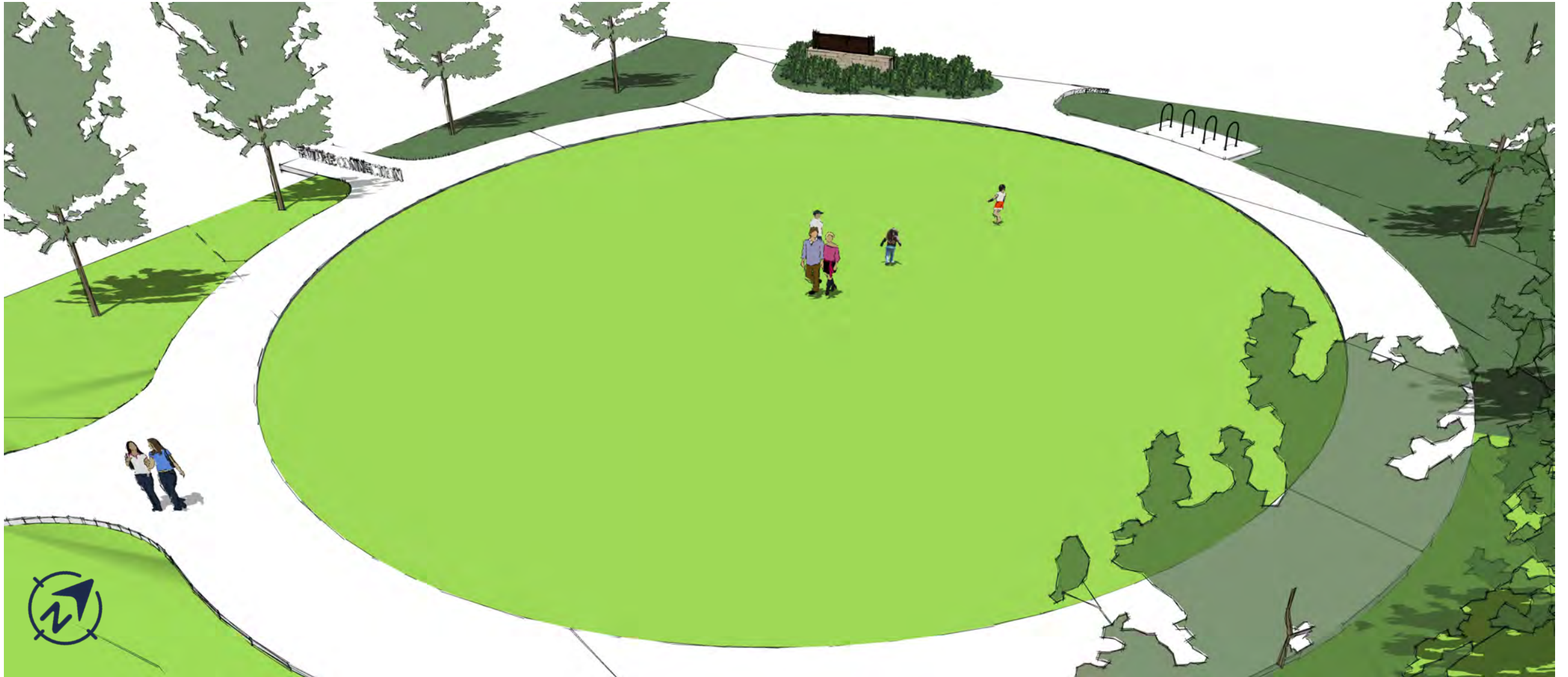
Questions or Comments?

Please let us know if you have any comments or questions regarding the information that has been presented so far and we will respond to them as we receive them.

Design Park D



Design Park D Base

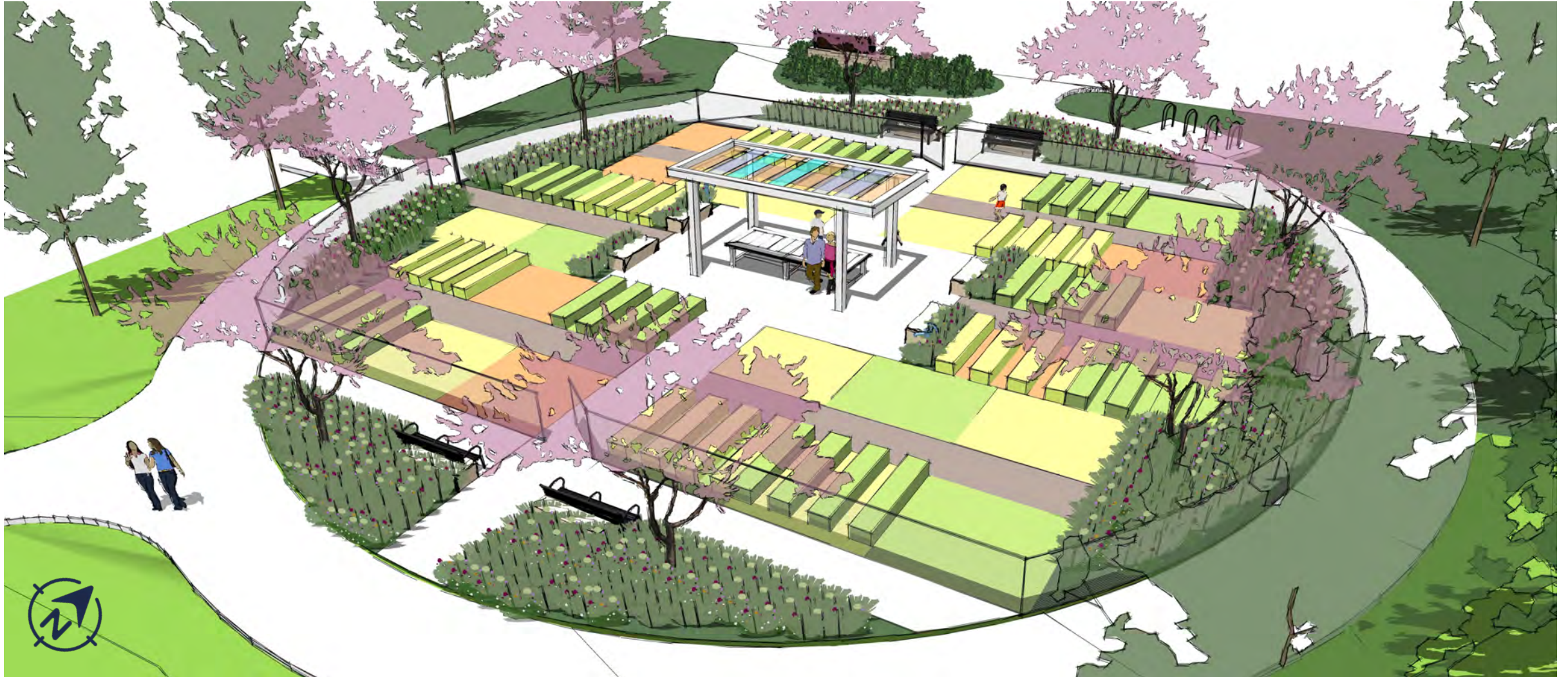


Design Park D Alternate 1

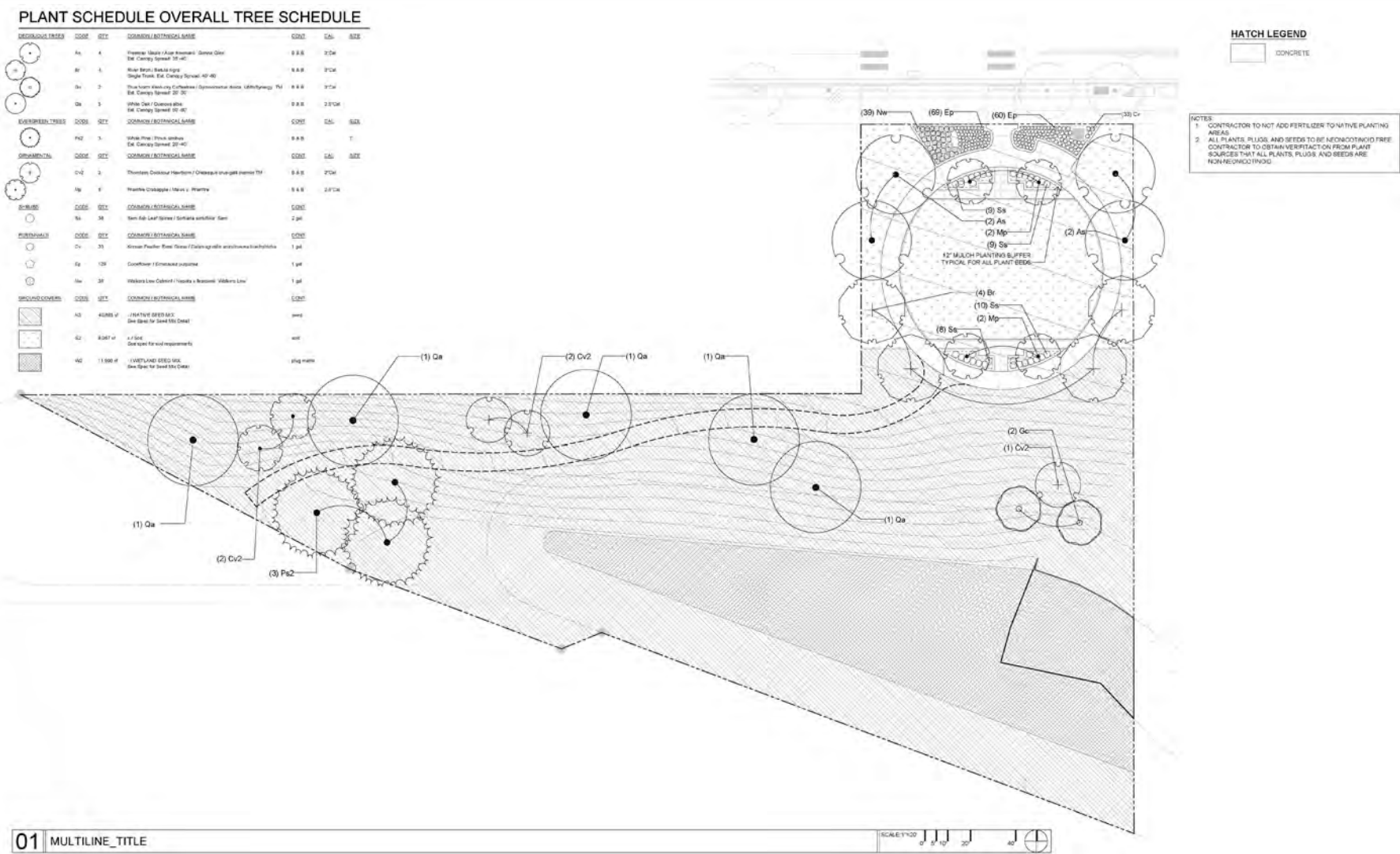


Design Park D

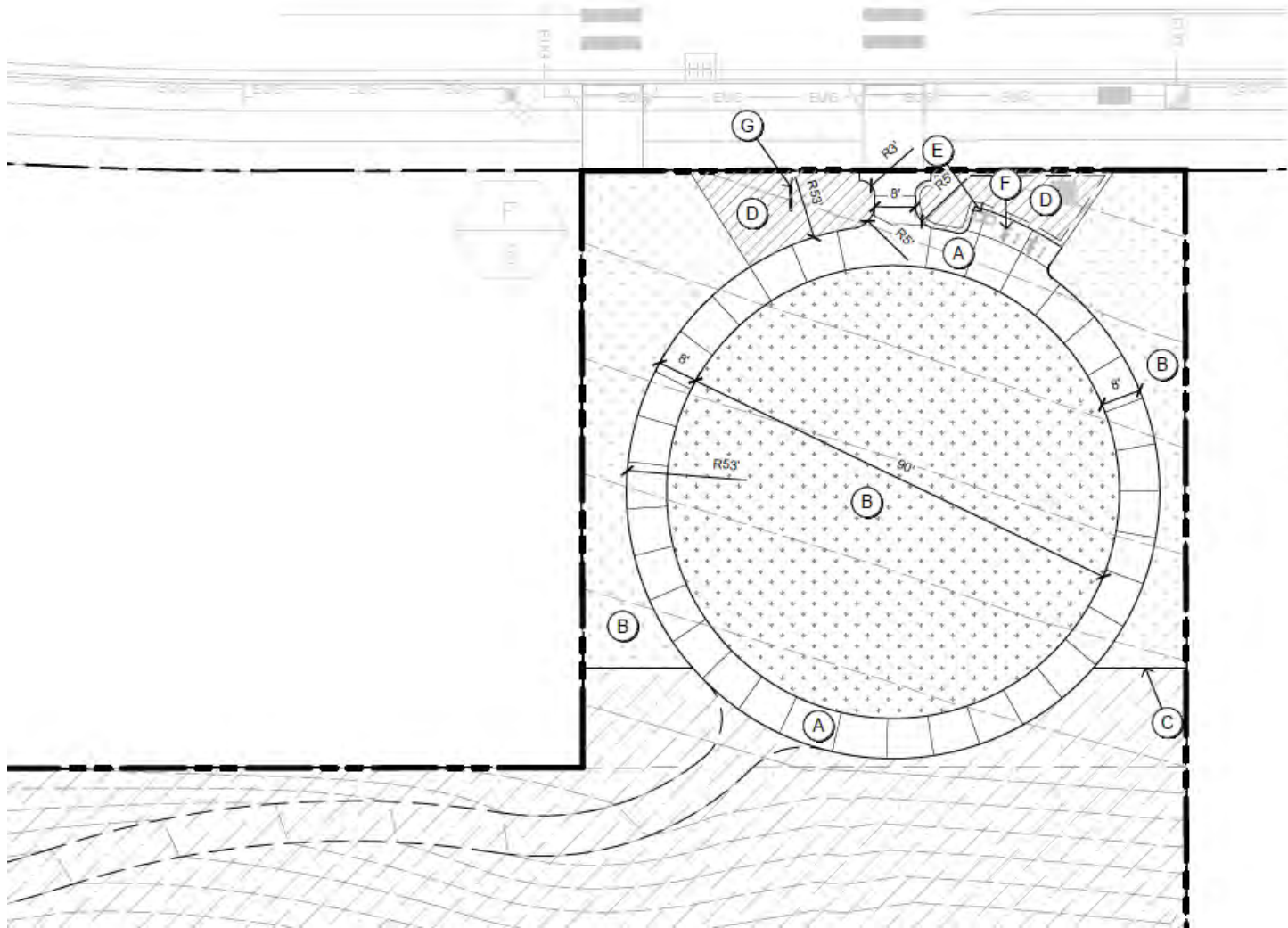
(possible future phase with community garden group)



Design Park D Plan



Design Park D Plan



HATCH LEGEND

	CONCRETE
	LANDSCAPE PLANTING BED
	FLEX / OPEN LAWN
	NATIVE SEED MIX
	WETLAND SEED MIX

LEGEND

- A CONCRETE WALK, SEE PARK D LS500
- B TURF LAWN
- C LANDSCAPE EDGING, AS SPECIFIED
- D LANDSCAPE PLANTING BED, SEE PARK D LP500
- E TRASH RECEPTACLE, CITY STANDARD
- F BIKE RACK, SEE 05/PARK D LS500
- G MONUMENT PARK SIGN, SEE 03/PARK D LS500



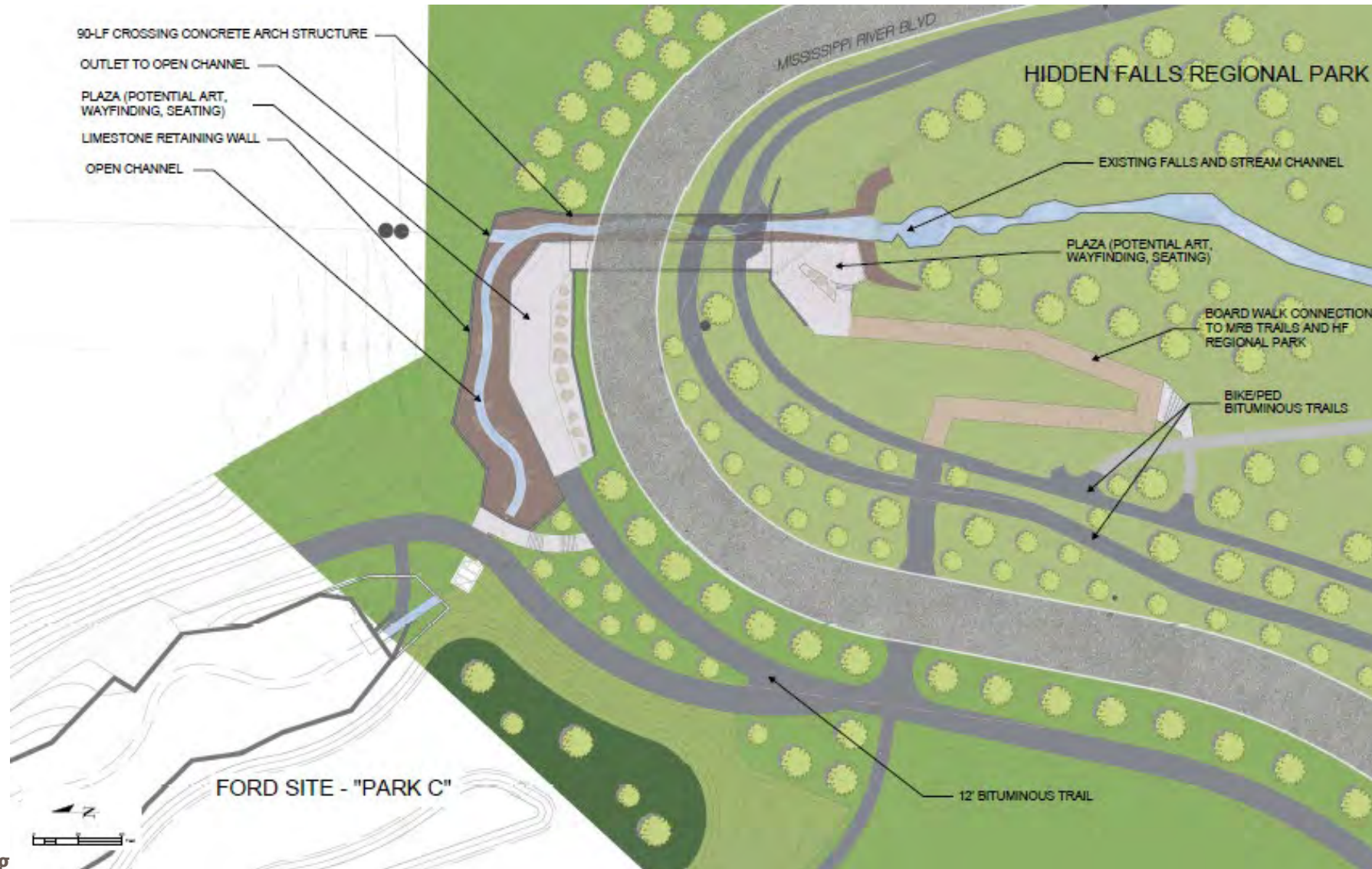
Park and Civic Space Distribution

Highland Bridge

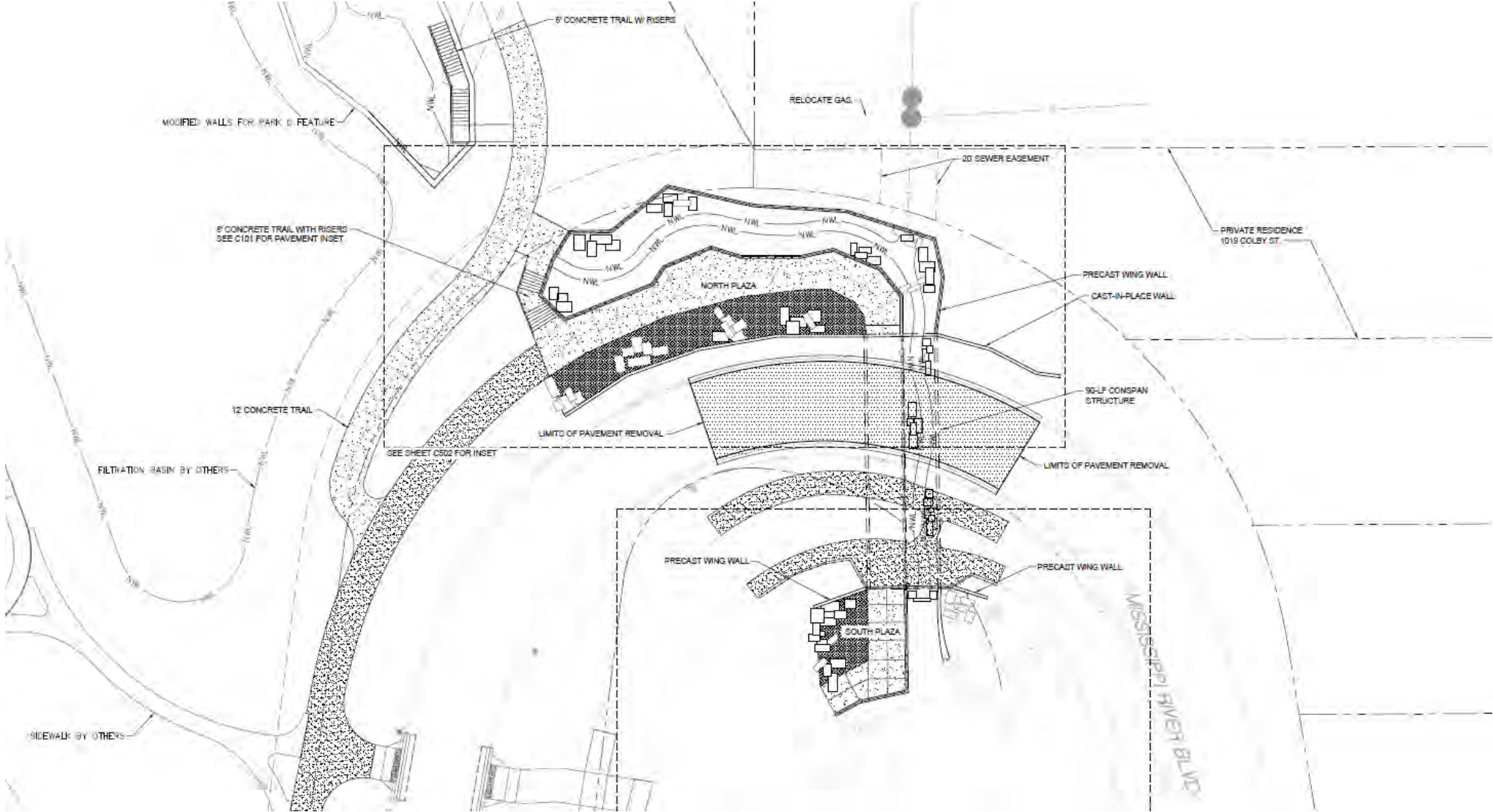
Parks and Civic Space Activities and Amenities

Activities and Amenities	Park A	Park B	Park C	Park D	Outlot B	Outlot C	Outlot D	Highland Ball
	Multiuse flex Lawn	LG Playground area	Nature play area	Open lawn	Water feature	Event lawn	Water Feature(pond)	Ball fields
	Skate trail	Multiuse flex Lawn	Adult fitness area	Seating	Sculpture focal point	Event plaza	Open Lawns	Concession building
	Seating	Basketball court	Volleyball courts	Trails	Seating	Seating	Canoe/Kayak access	Playground area*
	Walkways	Pickleball courts	Shelter structure	Wetland and buffer	Outdoor dining	Fair and Market Area	Ice Skating	Seating
	Water fountain	Games tables	Multiuse flex lawn	Community Garden*		Yard Games	Model Boats	Open Lawn*
	Boardwalk / Platform	Seating	Activity / games lawn				Performance Terrace	Shelter*
		Walkways	Dog Park				Seating	Storage/Training Bldg*
		Pet relief area	Picnic area				Hammocking	
		Water fountain	Hammocking	*space provided			Seat Swings	
			Seating	requires community			Plazas	*future development
			Walkways/trails	initiative			Water trail	
			Bedrock ravine				Interpretive features	
			Pools and waterfalls				Garden room	
			Natural landscape				Pedestrian Bridge	
			Interpretive features				Trails	
			Pedestrian Bridge				Pet relief area	
			Water fountains				Library structure	

MRB Crossing



MRB Crossing



Park Naming Process

1. Any Saint Paul resident, organization, agency, or business may recommend names for new park sites or name changes for existing park sites.
2. **Requests shall be addressed to the Director of Parks and Recreation** but sent to ellen.stewart@ci.stpaul.mn.us Closing date TBA (early 2021)
3. **Director shall forward the request and the staff recommendation to the Parks and Recreation Commission** for its review and comment.
4. The Parks and Recreation Commission shall present its recommendation **to the Mayor and City Council for final action.** (tentatively Early Q2 2021).

Questions or Comments

Please let us know if you have any comments or questions regarding the information that has been presented so far and we will respond to them as we receive them.

Next Steps

- Virtual Open House TBD
- Site Visit
- Construction Continues
- Thank you!

Questions, Comments, Feedback?

THE FORD SITE PARK SYSTEM

2021 Complete Parks Facilities or Public Open Spaces

2022 Complete Parks Facilities or Public Open Spaces

2023 Complete Parks Facilities or Public Open Spaces

