



© 2018 Pictometry



SAINT PAUL
MINNESOTA

PARKS AND RECREATION - Design and Construction Division

March 2021

Design Advisory Committee Meeting

WELCOME DESIGN ADVISORY COMMITTEE MEMBERS!

• Meeting Format & Best Practices

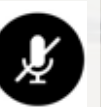
1. Brief Presentation

2. Group Discussion

3. Next Steps

To help the meeting run smoothly...

• Please keep yourself on mute until called for introductions, then until the group discussion



• If you have questions during the presentation, please type them into the meeting chat or raise your hand.



Google

- 
- **City of Saint Paul Parks and Recreation Staff**
 - **Design Advisory Member Introductions**

Brett Hussong, PLA

Lead Landscape Architect
Design & Construction

Mary Norton, PLA

Landscape Architect
Design & Construction

Andy Rodriguez

Recreation Services Manager
Recreation Services

Karin Misiewicz

Park Maintenance Supervisor
Operations + Maintenance

Adam Robbins

Natural Resources Supervisor
Natural Resources

Google



Reconvene Master Plan Design Advisory Committee

Guiding Principles and Role of Design Advisory Committee (DAC)

1. Advisory role to Parks and Recreation
2. Input balanced with larger citywide needs, Parks and Rec Systems & Vision Plan, Great River Passage & permitting
3. Committee members are representing larger interest group. City website will become central source of information allowing committee members to network and share information.
4. Decisions by consensus, not voting
5. Work respectfully in group setting
6. Understand and balance needs of all park users
7. Join Committee with open-mind and willingness to listen and hear views or ideas



MEETING AGENDA

- **Foundations: Process Summary & Status**
- **Project Composition**
- **Site-Specific Review**
- **Group Discussion**
- **Next Steps**

Google

• **Foundations: Process Summary & Status**

- Project Composition
- Site-Specific Review
- Group Discussion
- Next Steps



Google

Helping make Saint Paul the most Livable City in America by facilitating the creation of ...

OUR GOALS



ACTIVE LIFESTYLES



VIBRANT PLACES



A VITAL ENVIRONMENT

through parks and recreation that...



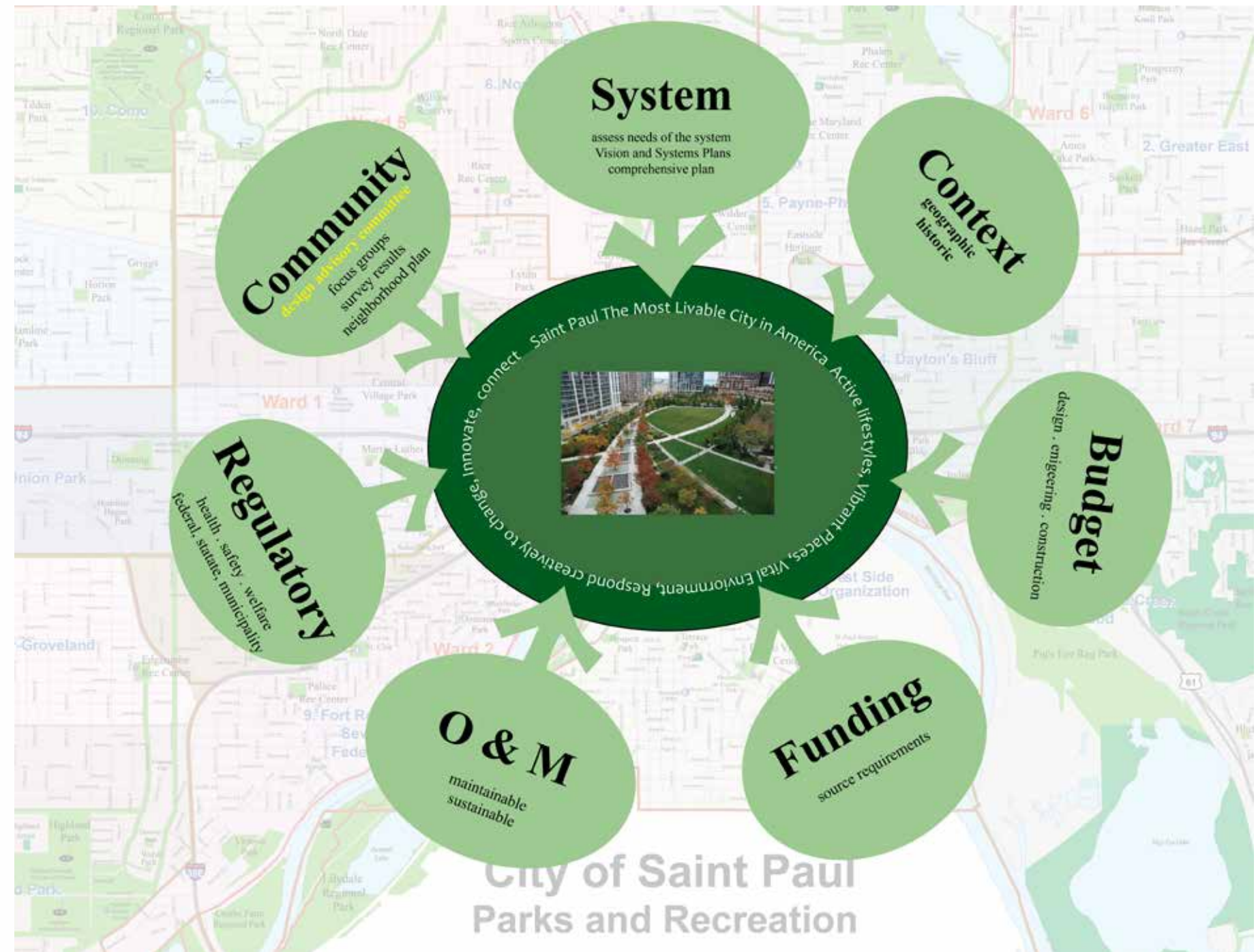
RESPONDS CREATIVELY TO CHANGE



INNOVATES WITH EVERY DECISION



CONNECTS THE ENTIRE CITY



Foundations: Process Summary & Status



Master Plan Process

Athletic Field Project

- **Park Master Plan Development**

- **Community Meeting Series**

DAC Meetings + Public Open House

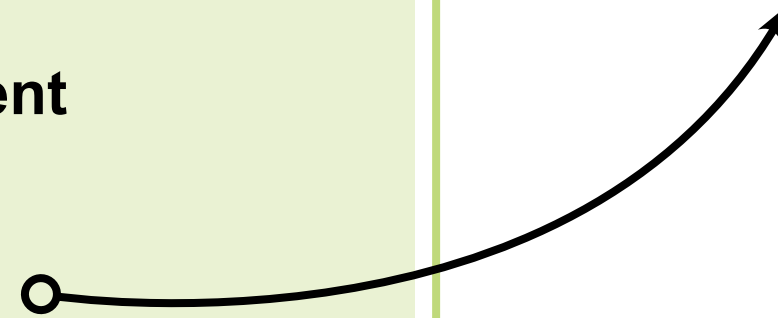
- **Formal Approval of Victoria Park Master Plan**

- **Planning & Funding Opportunity**

- **Outreach & Engagement**

- **Scope Refinement**

- **2021 Design & Construction**



Foundations: Process Summary & Status

• Foundations: Process Summary & Status

• **Project Composition**

• Site-Specific Review

• Group Discussion

• Next Steps

Google



VICTORIA PARK MASTER PLAN 2013

ACTIVE PARK

- GENERALLY DEFINED AS AREA NORTH OF RAIL ROAD TRACKS

PASSIVE PARK

- GENERALLY DEFINED AS AREA SOUTH OF RAIL ROAD TRACKS

WATER PLAZA/PARK ENTRANCE

RECIRCULATING WATER TREATMENT

COMMUNITY GARDENS

NORTH PICNIC AREA

- RESTROOMS
- SHELTER
- PLAY AREA/SPLASH PAD

40 CAR PARKING LOT

PARK ENTRANCE

AMPHITHEATER

OPEN WATER WETLAND

PARK ENTRANCE

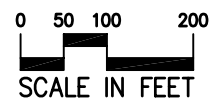
HISTORIC QUARRY INTERPRETIVE OPPORTUNITY

SHRUB CARR WETLAND

EXISTING WETLAND

BIRD HABITAT/MOIST SOIL CELLS

HIGHLAND PARK ACCESS TRAIL



DOWNTOWN ACCESS

ENTRY SIGNS

OVERLOOK WITH SEATING

60 CAR PARKING LOT

SLEDDING BOWL

RAVINE BRIDGE OVERLOOK

CANOE/KAYAK STORAGE

SOUTH PICNIC AREA

- RESTROOMS
- SHELTER
- PLAY AREA
- CANOE/KAYAK STORAGE

GRP CANOE AND KAYAK DOCK

MISSISSIPPI RIVER ACCESS TRAIL

COMBINED BIKE/PED TRAIL WITH HISTORIC/INTERPRETIVE ELEMENTS

RIVER SIDE GATHERING AREA

NATIVE PRAIRIE PLANTING

RESTING AREA

FUTURE SHEPARD ROAD TUNNEL

SAM MORGAN REGIONAL TRAIL EXPLORE ADA ACCESS TO VICTORIA PARK

WATER CHANNEL DOWN BLUFF

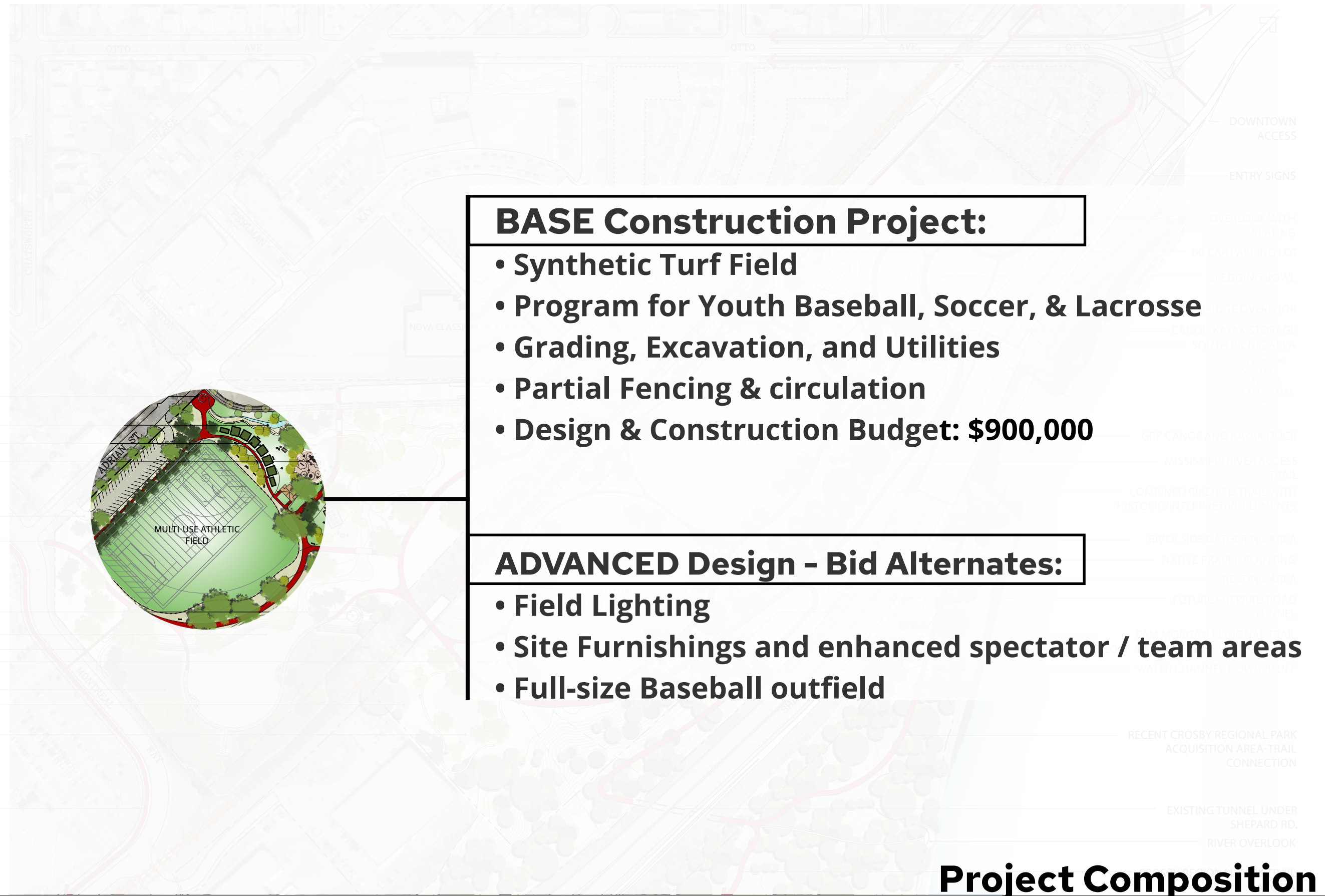
RECENT CROSBY REGIONAL PARK ACQUISITION AREA-TRAIL CONNECTION

EXISTING TUNNEL UNDER SHEPARD RD.

RIVER OVERLOOK

CROSBY REGIONAL PARK TRAIL ACCESS





BASE Construction Project:

- Synthetic Turf Field
- Program for Youth Baseball, Soccer, & Lacrosse
- Grading, Excavation, and Utilities
- Partial Fencing & circulation
- Design & Construction Budget: \$900,000

ADVANCED Design - Bid Alternates:

- Field Lighting
- Site Furnishings and enhanced spectator / team areas
- Full-size Baseball outfield

Project Composition



Victoria Park Existing Conditions



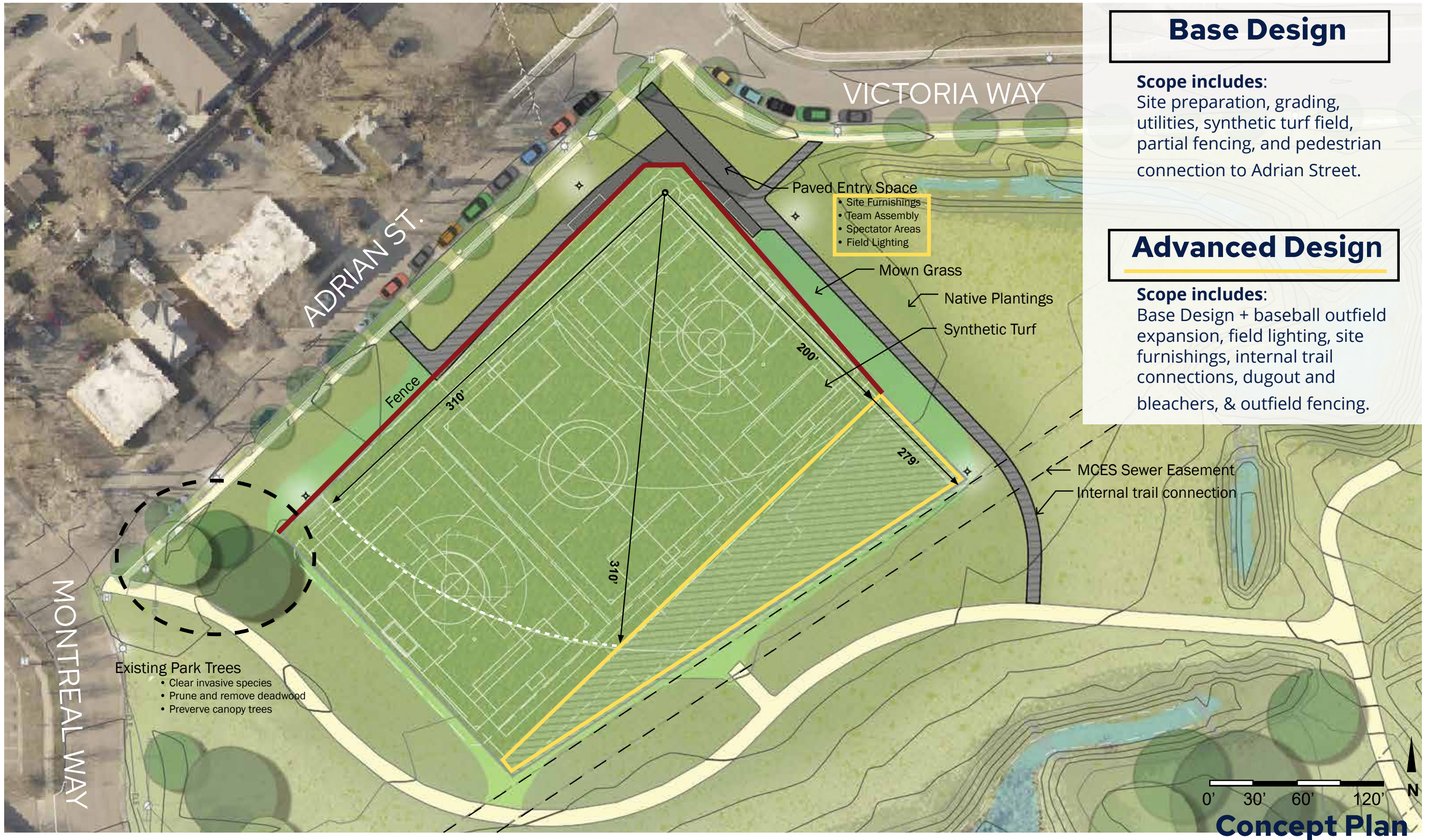
- **Adrian St. and Victoria Way**
- **Interior trail access at Montreal Way**
- **Open space, native plantings**
- **Existing soils**

Victoria Park Existing Conditions

- Foundations: Process Summary & Status
- Project Composition
- **Site-Specific Review**
- Group Discussion
- Next Steps



Google





LED lighted soccer facility located adjacent to a residential neighborhood. Photo taken approximately 150' from field edge.



- Design within context
- Site furnishings & details



Site Characteristics

- Foundations: Process Summary & Status
- Project Composition
- Site-Specific Review
- **Group Discussion**
- Next Steps



Google

- **How would this multi-use field affect your representative group?**
- **What other amenities would improve the experience?**
- **How would you like this space to feel in the next 5-10 years?**



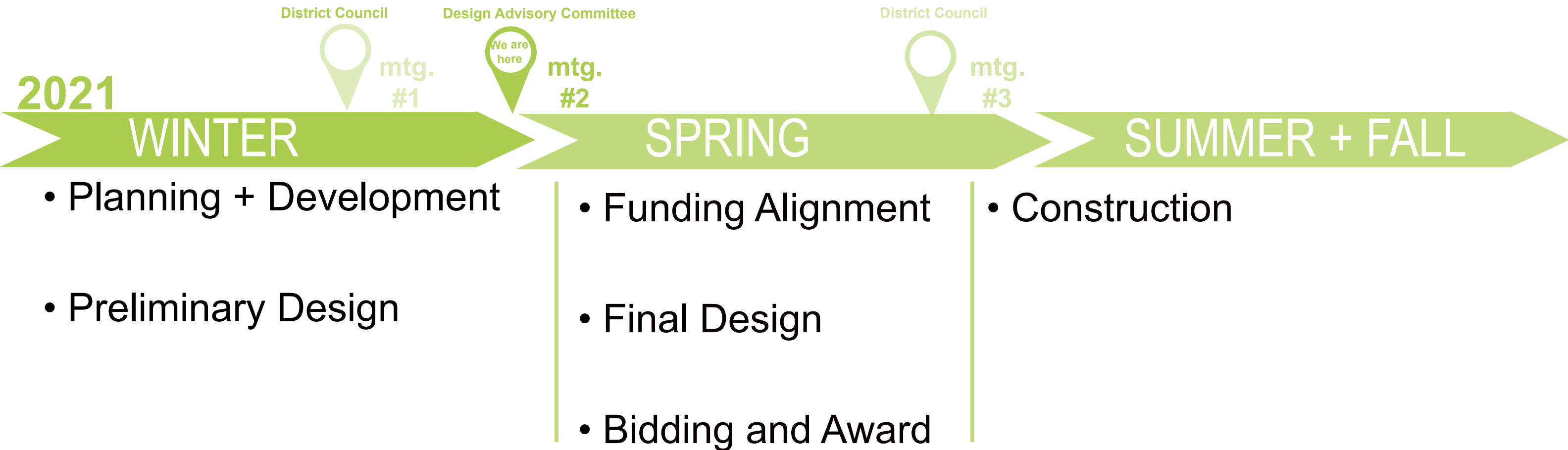
Google

- Foundations: Process Summary & Status
- Project Composition
- Site-Specific Review
- Group Discussion

- **Next Steps**



Google



PROJECT WEBSITE:

www.stpaul.gov/victoriafield



PROJECT CONTACT:

Mary Norton - Mary.norton@ci.stpaul.mn.us
 651-266-6407



Schedule and Additional Information