



Multi-Use Field at VICTORIA PARK

© 2018 Pictometry



WELCOME COMMUNITY MEMBERS!

• Meeting Format & Best Practices

1. Brief Presentation

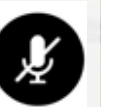
2. Group Discussion

To help the meeting run smoothly...

• Please keep yourself on mute, there will be an opportunity for discussion following the presentation.

• If you have questions during the presentation, please type them into the meeting chat.

• Meeting recording, FAQ, attendees list, and chat content will be posted on project website following Open House.



Google



• **City of Saint Paul Parks and Recreation Staff**

Brett Hussong, PLA

Lead Landscape Architect
Design & Construction

Mary Norton, PLA

Landscape Architect
Design & Construction

Andy Rodriguez

Recreation Services Manager
Recreation Services

Adam Robbins

Natural Resources Supervisor
Natural Resources

Karin Misiewicz

Park Maintenance Supervisor
Operations + Maintenance

Google

MEETING AGENDA

- **Foundations: Process Summary & Status**
- **Project Composition**
- **Site-Specific Review**
- **Next Steps**
- **Group Discussion**

Google

• **Foundations: Process Summary & Status**

- Project Composition
- Site-Specific Review
- Next Steps
- Group Discussion



Google

Helping make Saint Paul the most Livable City in America by facilitating the creation of ...

OUR GOALS



ACTIVE LIFESTYLES



VIBRANT PLACES



A VITAL ENVIRONMENT

through parks and recreation that...



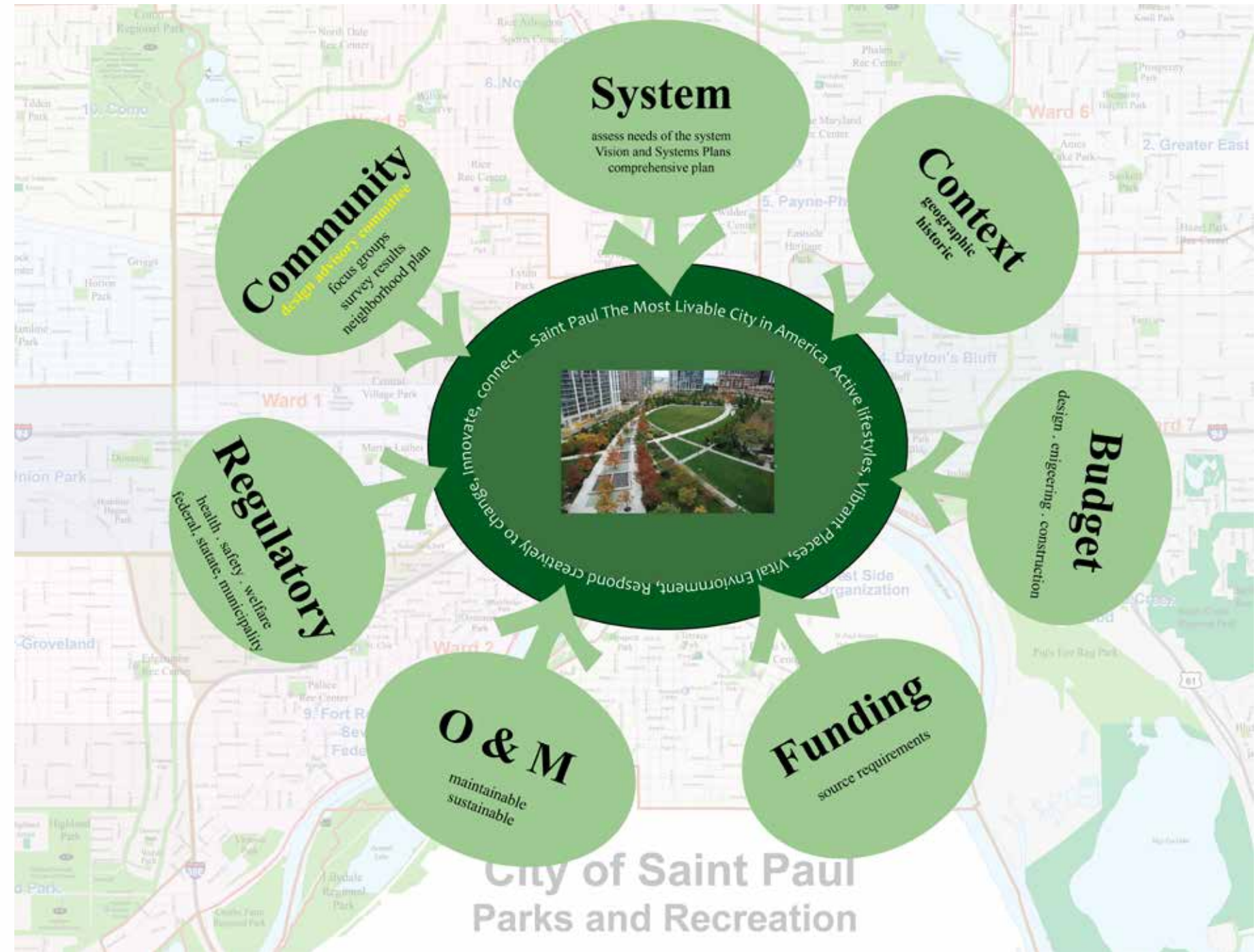
RESPONDS CREATIVELY TO CHANGE



INNOVATES WITH EVERY DECISION



CONNECTS THE ENTIRE CITY



Foundations: Process Summary & Status



Master Plan Process

Athletic Field Project

- **Park Master Plan Development**

- **Community Meeting Series**

DAC Meetings + Public Open House

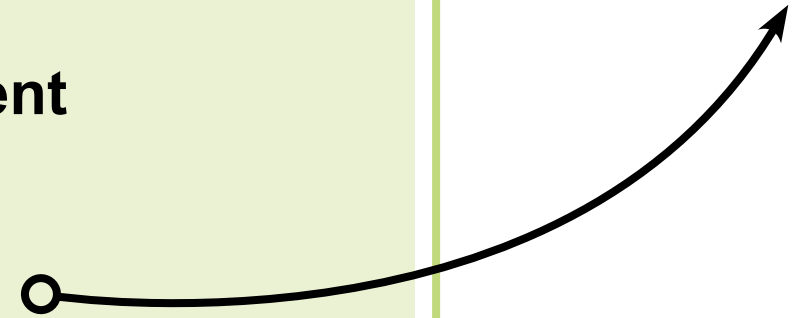
- **Formal Approval of Victoria Park Master Plan**

- **Planning & Funding Opportunity**

- **Outreach & Engagement**

- **Scope Refinement**

- **2021 Design & Construction**



Foundations: Process Summary & Status

VICTORIA PARK MASTER PLAN 2013

ACTIVE PARK

- GENERALLY DEFINED AS AREA NORTH OF RAIL ROAD TRACKS

PASSIVE PARK

- GENERALLY DEFINED AS AREA SOUTH OF RAIL ROAD TRACKS



WATER PLAZA/PARK ENTRANCE
 RECIRCULATING WATER TREATMENT
 COMMUNITY GARDENS

NORTH PICNIC AREA
 • RESTROOMS
 • SHELTER
 • PLAY AREA/SPLASH PAD

40 CAR PARKING LOT
 PARK ENTRANCE

AMPHITHEATER
 OPEN WATER WETLAND
 PARK ENTRANCE
 HISTORIC QUARRY INTERPRETIVE OPPORTUNITY
 SHRUB CARR WETLAND
 EXISTING WETLAND

BIRD HABITAT/MOIST SOIL CELLS

HIGHLAND PARK ACCESS TRAIL



DOWNTOWN ACCESS
 ENTRY SIGNS

OVERLOOK WITH SEATING
 60 CAR PARKING LOT
 SLEDDING BOWL

RAVINE BRIDGE OVERLOOK
 CANOE/KAYAK STORAGE
 SOUTH PICNIC AREA
 • RESTROOMS
 • SHELTER
 • PLAY AREA
 • CANOE/KAYAK STORAGE

GRP CANOE AND KAYAK DOCK
 MISSISSIPPI RIVER ACCESS TRAIL

COMBINED BIKE/PED TRAIL WITH HISTORIC/INTERPRETIVE ELEMENTS

RIVER SIDE GATHERING AREA
 NATIVE PRAIRIE PLANTING

RESTING AREA
 FUTURE SHEPARD ROAD TUNNEL

SAM MORGAN REGIONAL TRAIL
 EXPLORE ADA ACCESS TO VICTORIA PARK
 WATER CHANNEL DOWN BLUFF

RECENT CROSBY REGIONAL PARK ACQUISITION AREA-TRAIL CONNECTION

EXISTING TUNNEL UNDER SHEPARD RD.
 RIVER OVERLOOK

CROSBY REGIONAL PARK TRAIL ACCESS



Timeline

2012 - 2014

- Master Plan Development
- Community Meeting Series
DAC Meetings + Public Open House
- Formal Approval of Victoria Park Master Plan

2015

- Wells capped, pump-house removed
- Berms, native seeding, & overlook
- Stewart Ave. extension and trail

2016 - 2017

- Design for play area
- Stormwater feasibility study

2019 - 2020

- HRA Land Transfer to Parks and Recreation
- Remediation funding

Master Plan Project Priorities + Phase

1	Internal park trail system	Complete
2	Picnic shelter/restrooms - north side	Grant Application
3	Play area - north side	Planning
4	Picnic shelter/restrooms - south side	Design
5	Multi-use athletic field	Planning
6	Play area - south side	Design
7	External trail connections	Planning
8	Boardwalk in wetland	Planning
9	Mown turf open space	Planning
10	Bird habitat	Complete
11	Recirculating water feature	Planning
12	Shepard Road overlook	Complete
13	Invasive plant management	Complete
14	Community gardens	Planning
15	Amphitheater	Planning
16	Fishing Pier and shoreline enhancements	Planning
17	Historic quarry/interpretive opportunity	Planning
18	Public Art	Planning
19	Bread oven	Planning



Foundations: Process Summary & Status

SYSTEM PLAN NEEDS

- Shows increasing popularity of turf field sports
- Identifies deficits in field sports facilities at neighborhood and community parks

MASTER PLAN IMPLEMENTATION

- Utilize phasing plan as a guide for projects
- Balance of system needs and strategic funding opportunities

• Foundations: Process Summary & Status

• **Project Composition**

• Site-Specific Review

• Next Steps

• Group Discussion

Google



EVOLUTION OF SITE

1923



QUARRY SITE





KOCH - EXXON MOBIL



REMEDIATION



VICTORIA PARK



- **Adrian St. and Victoria Way**
- **Interior trail access at Montreal Way**
- **Open space, native plantings**
- **Existing soils**

Victoria Park Existing Conditions



Sylvan Park - Saint Paul



Natural Turf - Sylvan Park

Turf Athletic Fields

- Demand exceeds availability system-wide
- Synthetic vs. natural turf fields
 - Seasonal use extension
 - Field conditions expand playtime
 - Significant reduction in maintenance
- Advances in Technology
 - Consistent, durable play surface
 - Recycled and re-purposed products



Elliot Park - Minneapolis



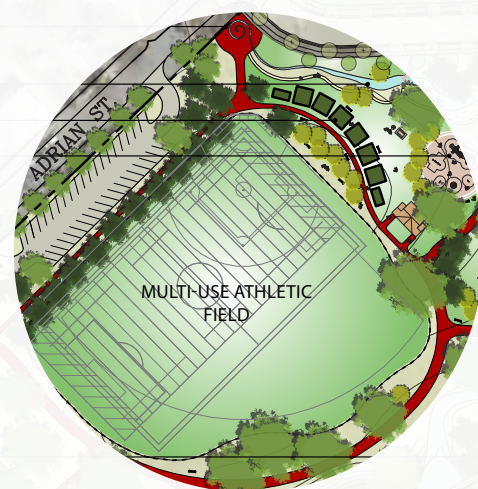
Project Composition



Design & Construction Budget: **\$1,100,000**

Sources Include:

- Remaining Funds from HRA Redevelopment
- Minnesota Twins



BASE Construction Project:

- Synthetic Turf Field
- Program for Youth Baseball, Soccer, & Lacrosse
- Grading, Excavation, and Utilities
- Partial Fencing & circulation

ADVANCED Design - Bid Alternates:

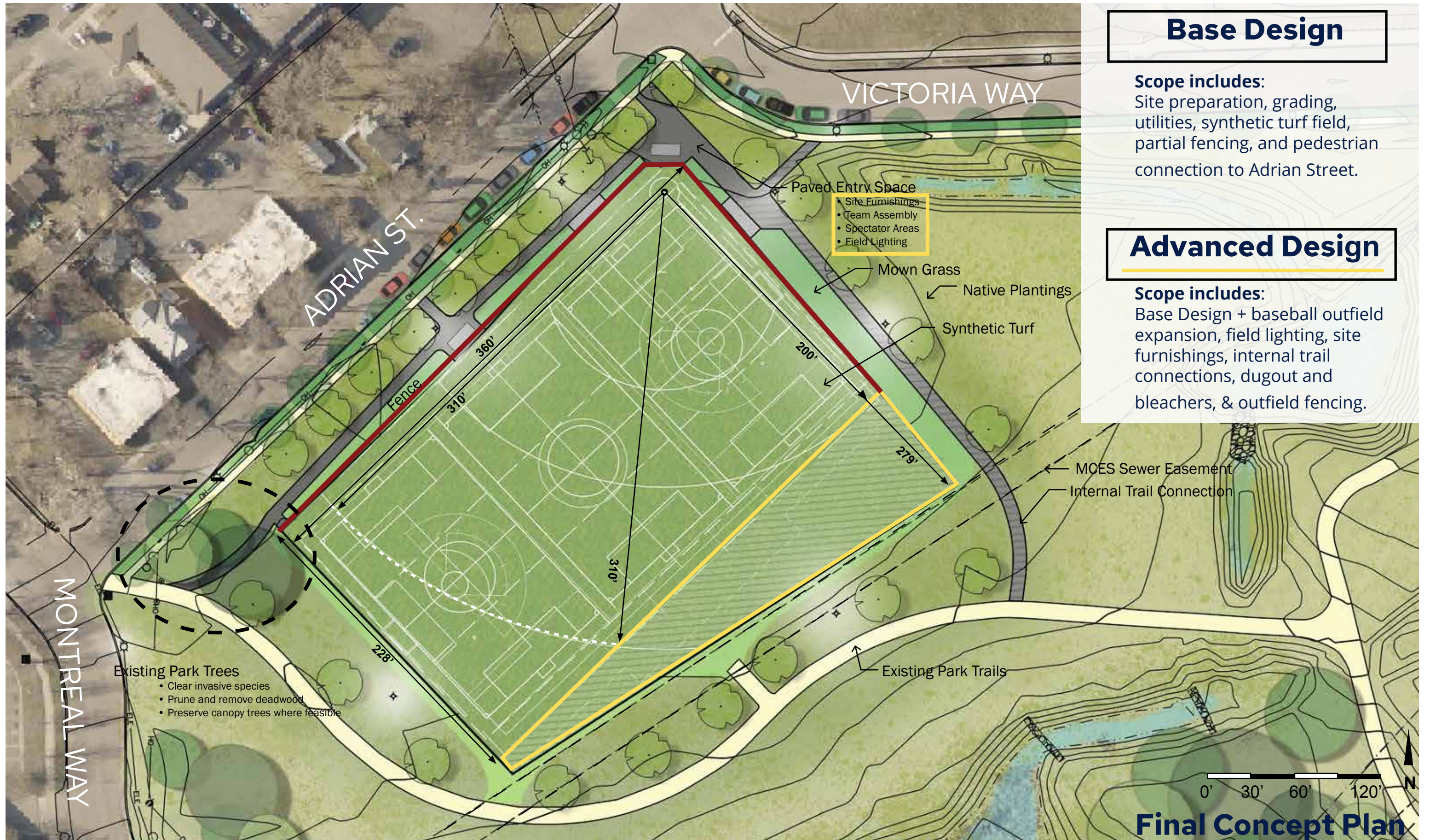
- Field Lighting
- Site Furnishings and enhanced spectator / team areas
- Full-size Baseball outfield

Project Composition

- Foundations: Process Summary & Status
- Project Composition
- **Site-Specific Review**
- Next Steps
- Group Discussion



Google



Base Design

Scope includes:
 Site preparation, grading, utilities, synthetic turf field, partial fencing, and pedestrian connection to Adrian Street.

Advanced Design

Scope includes:
 Base Design + baseball outfield expansion, field lighting, site furnishings, internal trail connections, dugout and bleachers, & outfield fencing.



LED lighted soccer facility located adjacent to a residential neighborhood. Photo taken approximately 150' from field edge.

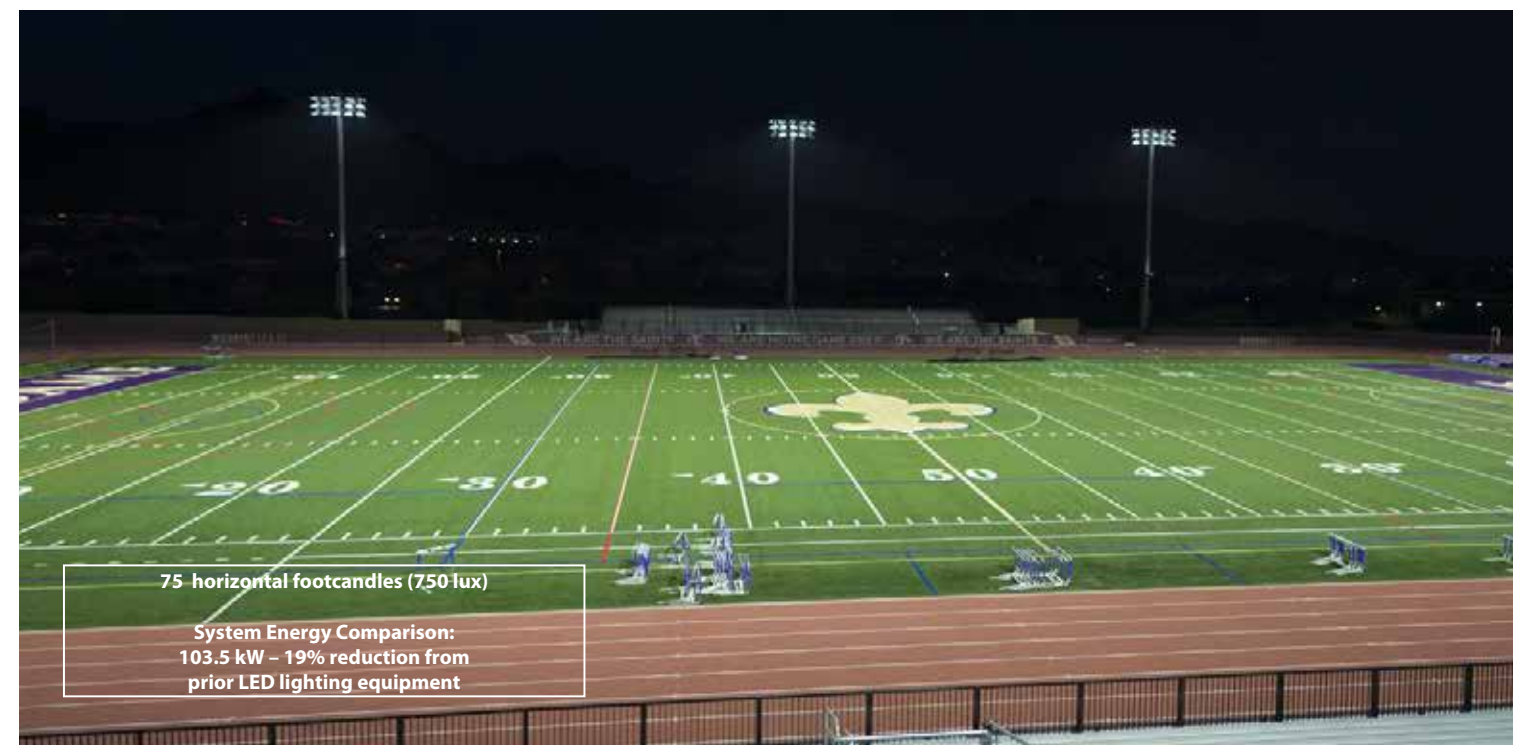


- Design within context
- Site furnishings & details

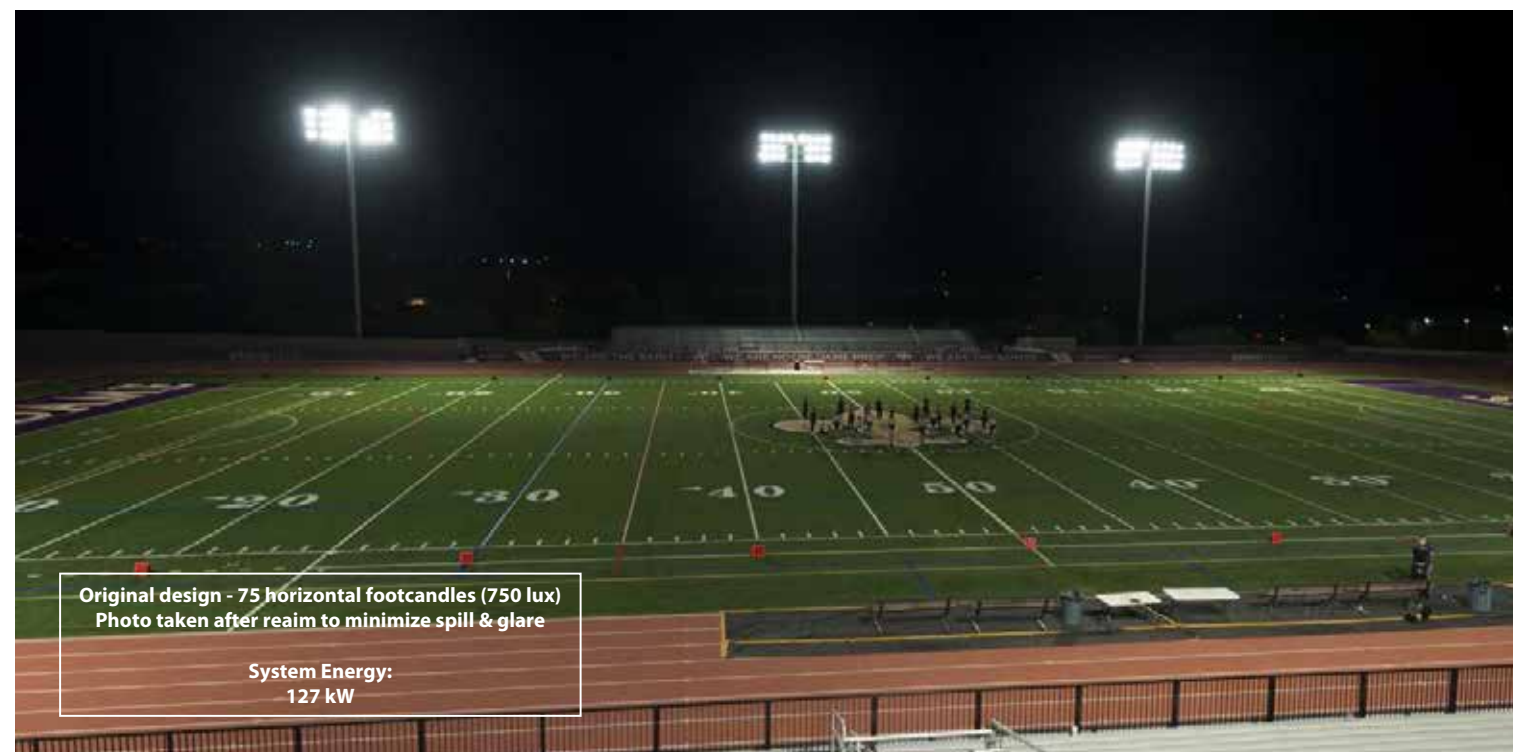


Site Characteristics





75 horizontal footcandles (750 lux)
System Energy Comparison:
103.5 kW - 19% reduction from
prior LED lighting equipment



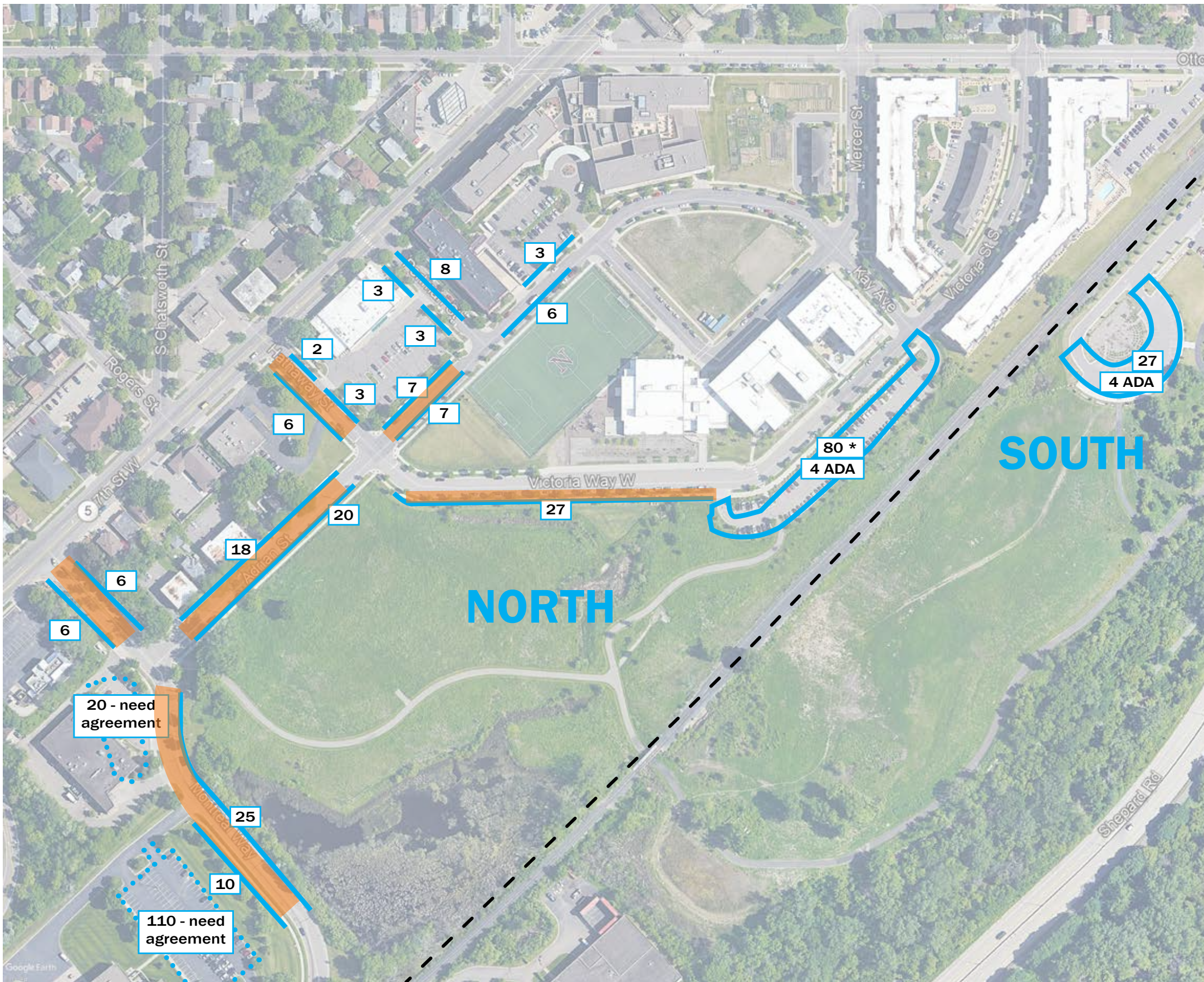
Original design - 75 horizontal footcandles (750 lux)
Photo taken after reaim to minimize spill & glare
System Energy:
127 kW

Glyndon Park - Vienna, VA

Controlled Light Fixture Comparison - 2017 Musco Sports Lighting LLC

Lighting Design Precedent





PARKING QUANTITIES

- 160** Parallel on street
- 27** In dedicated park lot (south)
- 130** Available if agreement created
- 8** ADA / Accessible stalls in lots

PARKING LEGEND

- Available Parking
- Private Parking (possible use with agreement)
- * For school use during daytime

- **80 estimated max. need**
- **137 on-street near field**
- **138 surplus spaces available**
- **Potential for shared-use parking**

Parking Study

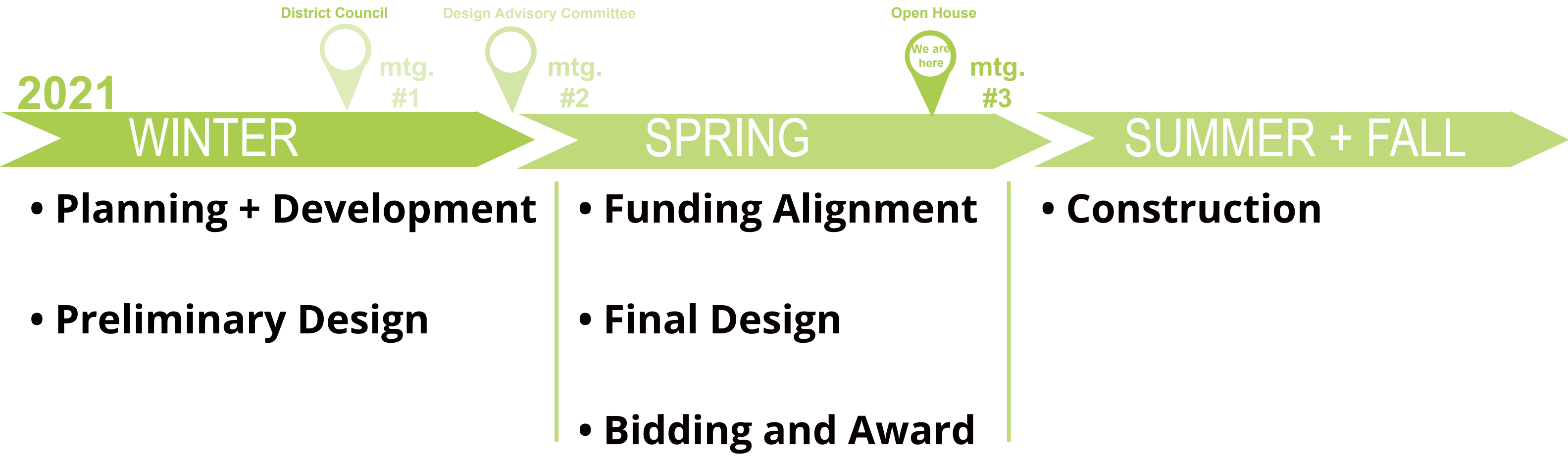
- Foundations: Process Summary & Status
- Project Composition
- Site-Specific Review

- **Next Steps**

- Group Discussion

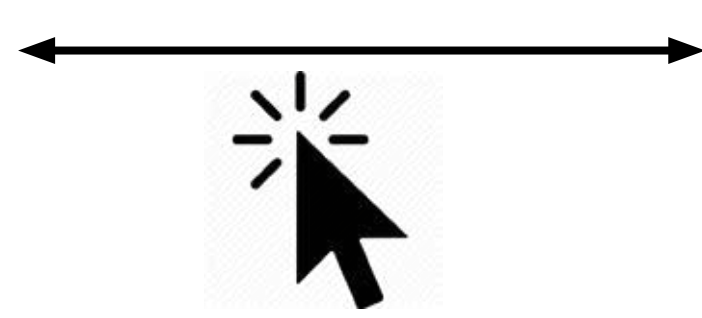


Google



PROJECT WEBSITE:

www.stpaul.gov/victoriafield



Project updates will be available throughout construction



PROJECT CONTACT:

Mary Norton - Mary.norton@ci.stpaul.mn.us
651-266-6407

Schedule and Additional Information

- Foundations: Process Summary & Status
- Project Composition
- Site-Specific Review
- Next Steps
- **Group Discussion**



Google