

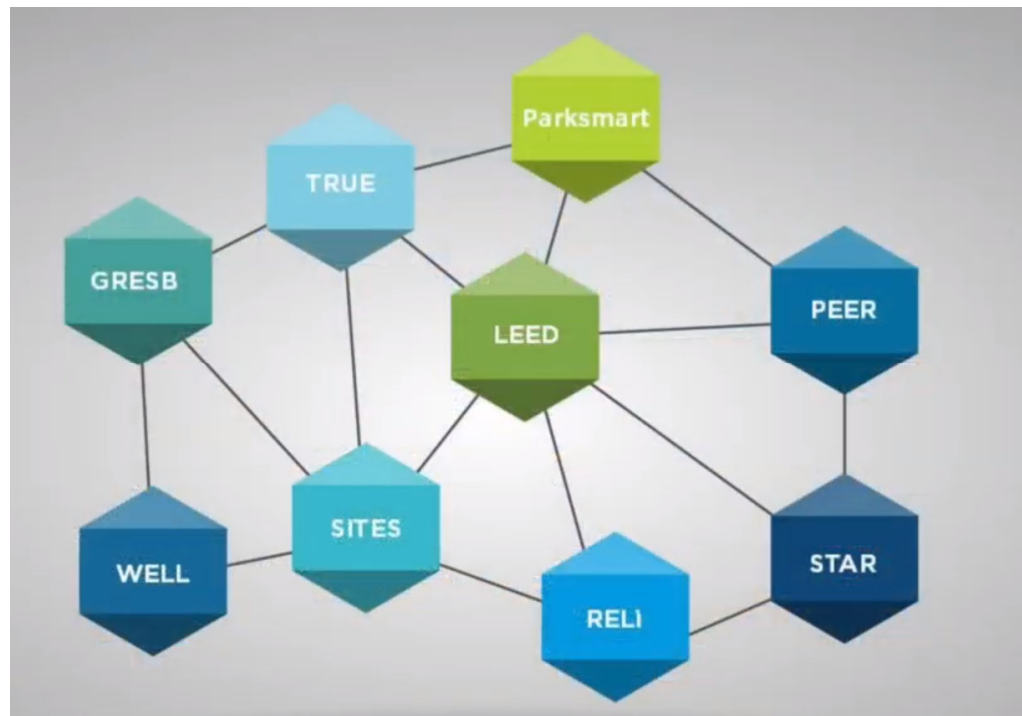
## LEED v4.1 for Communities Plan & Design



### Hillcrest Master Plan



# Why LEED for Communities?



# Why LEED for Communities?

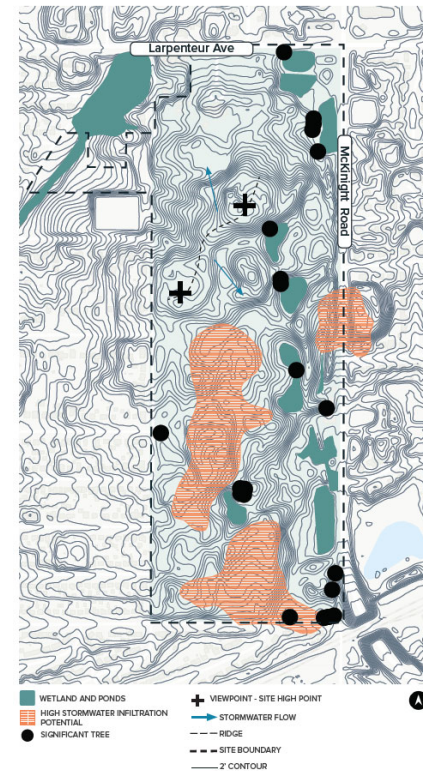
LEED for Communities is aligned with global goals...






# LEED for Communities

-  Ecology and Natural Systems
-  Transportation and Land Use
-  Water Efficiency
-  Energy and Greenhouse Gas Emissions
-  Materials and Resources
-  Quality of Life
-  Innovation
-  Regional Priorities





# Current LEED v4.1 for Communities Scorecard


**LEED for Cities and Communities: Plan and Design**  
 Project Checklist

Project Name:   
 Project ID:   
 Date:

Y ? N		Cities Communities		Y ? N		Cities Communities	
2	0	3	INTEGRATIVE PROCESS	POSSIBLE: 5	POSSIBLE: 5		
Y			Prereq Integrative Planning and Design Process	REQUIRED	REQUIRED		
2		3	Credit Green Building Policy and Incentives	5	5		
11	2	0	NATURAL SYSTEMS AND ECOLOGY	POSSIBLE: 13	POSSIBLE: 13		
Y			Prereq Ecosystem Assessment	REQUIRED	REQUIRED		
Y			Prereq Construction Activity Pollution Prevention	REQUIRED	REQUIRED		
Y			Prereq Green Spaces	REQUIRED	REQUIRED		
5			Credit Natural Resources Conservation and Restoration	5	5		
2			Credit Light Pollution Reduction	2	2		
6			Credit Resilience Planning	6	6		
15	3	0	TRANSPORTATION AND LAND USE	POSSIBLE: 18	POSSIBLE: 18		
3		3	Credit Compact, Mixed Use and Transit Oriented Developme	6	6		
4			Credit Walkability and Bikeability	4	4		
2			Credit Access to Quality Transit	2	2		
2			Credit Alternative Fuel Vehicles	2	2		
2			Credit Smart Mobility and Transportation Policy	2	2		
2			Credit High Priority Sites	2	2		
7	0	5	WATER EFFICIENCY	POSSIBLE: 12	POSSIBLE: 12		
Y			Prereq Integrated Water Management	REQUIRED	REQUIRED		
Y			Prereq Water Access and Quality	REQUIRED	REQUIRED		
5			Credit Stormwater Management	5	5		
5		5	Credit Wastewater Management	5	5		
2			Credit Smart Water Systems	2	2		
29	2	0	ENERGY AND GREENHOUSE GAS EMISSIONS	POSSIBLE: 31	POSSIBLE: 31		
Y			Prereq Power Access, Reliability and Resiliency	REQUIRED	REQUIRED		
19			Prereq Energy and Greenhouse Gas Emissions Manager	15	19		
2		2	Credit Energy Efficiency	4	4		
6			Credit Renewable Energy	6	6		
N/A			Credit Low Carbon Economy	4	-		
2			Credit Grid Harmonization	2	2		
7	0	4	MATERIALS AND RESOURCES	POSSIBLE: 11	POSSIBLE: 11		
Y			Prereq Construction and Demolition Waste Manager	REQUIRED	REQUIRED		
Y			Prereq Solid Waste Management	REQUIRED	REQUIRED		
2			Credit Organic Waste Treatment	2	2		
3		2	Credit Recycling Infrastructure	5	5		
2			Credit Responsible Sourcing for Infrastructure	2	2		
2			Credit Smart Waste Management Systems	2	2		
8	0	2	QUALITY OF LIFE	POSSIBLE: 10	POSSIBLE: 10		
Y			Prereq Demographic Assessment	REQUIRED	REQUIRED		
Y			Prereq Social Infrastructure	REQUIRED	REQUIRED		
Y			Prereq Economic Growth	REQUIRED	REQUIRED		
2			Credit Affordable Housing	2	2		
4		2	Credit Public Health	6	6		
2			Credit Emergency Management and Response	2	2		
5	1	0	INNOVATION	POSSIBLE: 6	POSSIBLE: 6		
5		1	Credit Innovation	6	6		
4	0	0	REGIONAL PRIORITY	POSSIBLE: 4	POSSIBLE: 4		
4			Credit Regional Priority	4	4		
88	8	14	TOTAL	110	110		
40-49		50-59		60-79		80+ Points	
CERTIFIED		SILVER		GOLD		PLATINUM	

## Schedule

- 1) Register
- 2) Precertify
- 3) Certify
- 4) Recertify



## Current Status

1) Register

2) Precertify



Hillcrest has submitted for “Precertification” at the **Platinum** level.

3) Certify

4) Recertify



CERTIFIED  
40-49 points



SILVER  
50-59 points



GOLD  
60-79 points

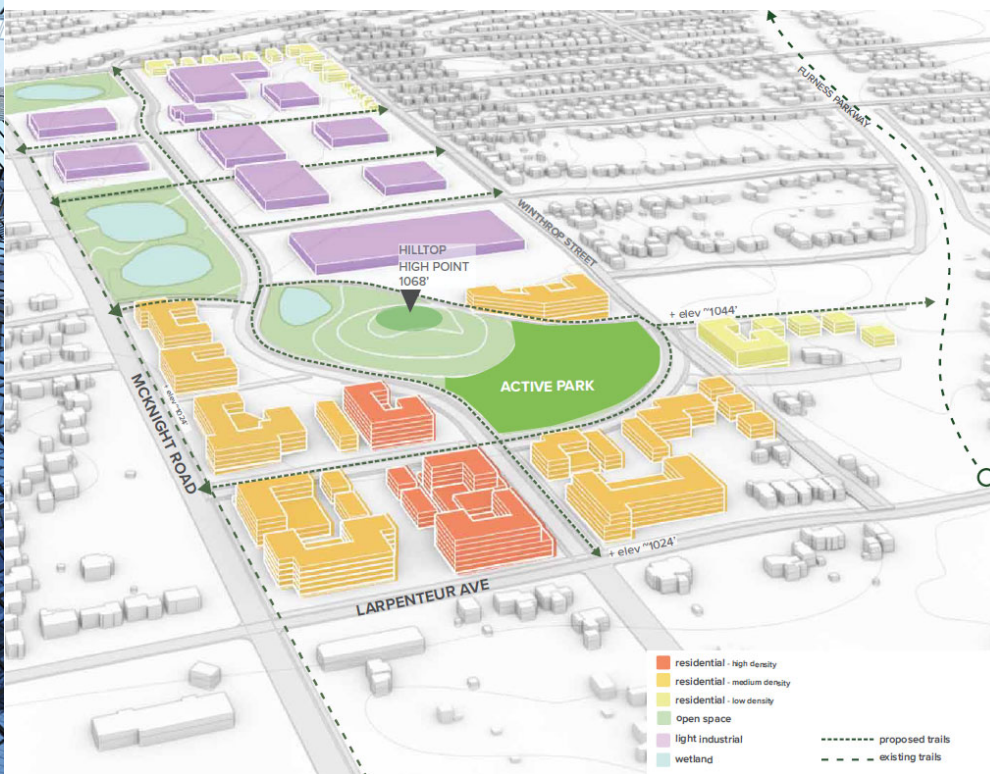


PLATINUM  
80+ points



# Hillcrest LEED Strategies: Green Building

## Green Building Policy & Incentives

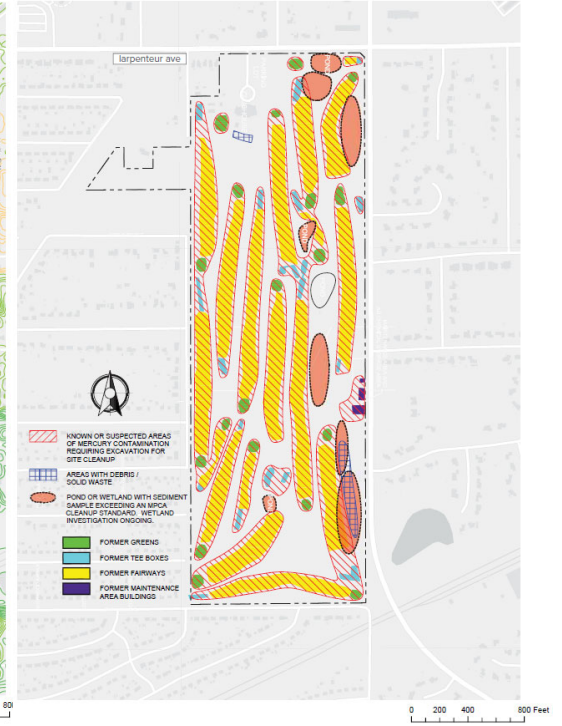
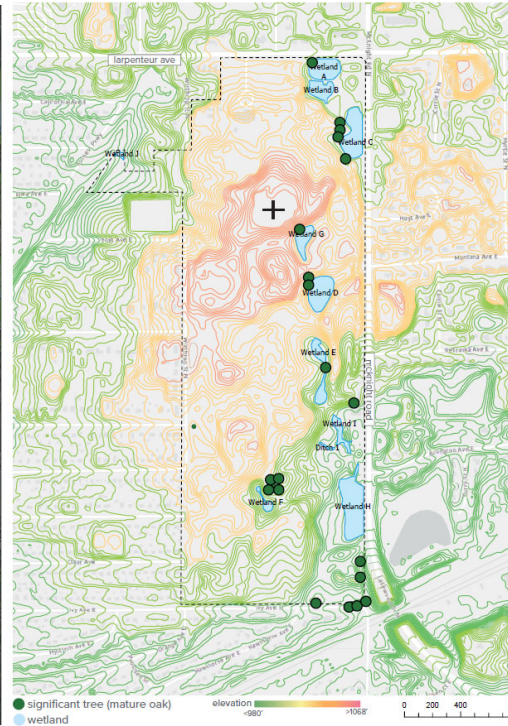
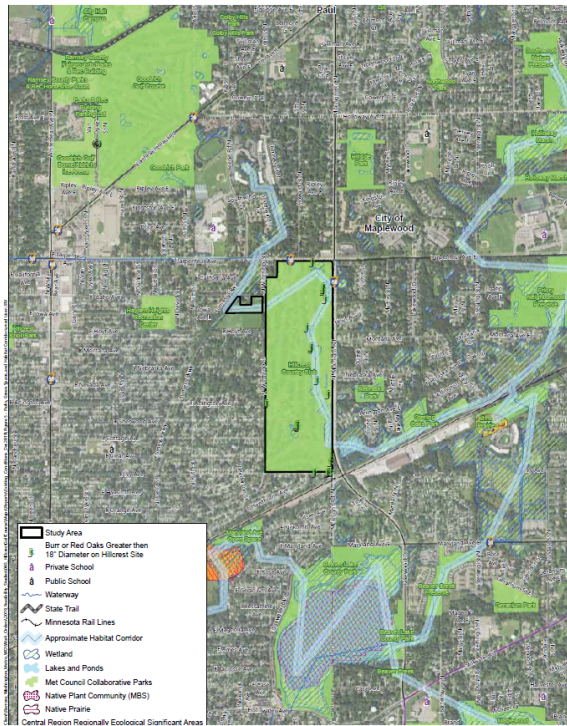




# Hillcrest LEED Strategies: Green Space

## Green Spaces, Natural Resources Conservation & Restoration

### OPEN SPACE AND HABITAT

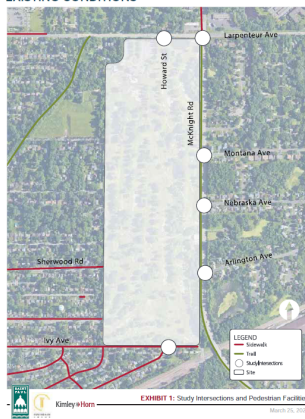


# Hillcrest LEED Strategies: Walk/Bike Ability

## Walkability & Bikeability

### PEDESTRIANS

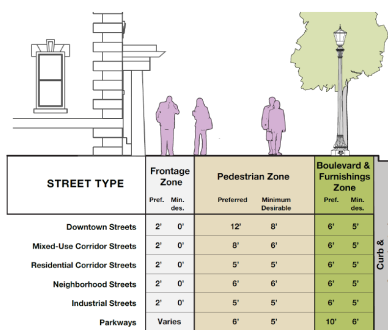
#### EXISTING CONDITIONS



#### HILLTOP

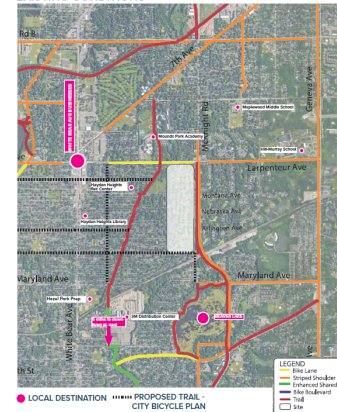


#### JOBS FOCUS



### TRAILS

#### EXISTING CONDITIONS



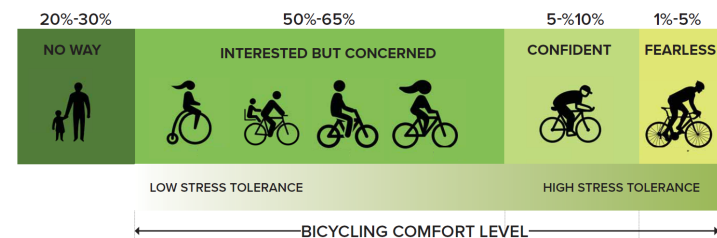
#### HILLTOP



#### JOBS FOCUS



### BIKEWAYS AND TRAILS





# Hillcrest LEED Strategies: Transit Accessibility

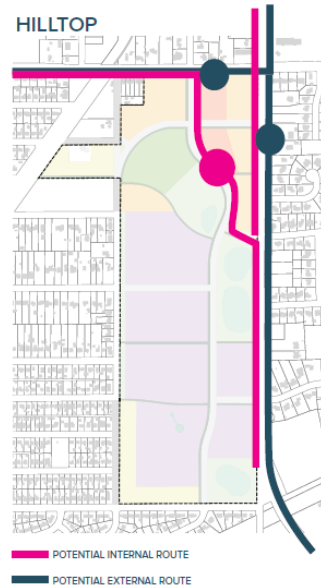
## Access to Quality Transit

### TRANSIT

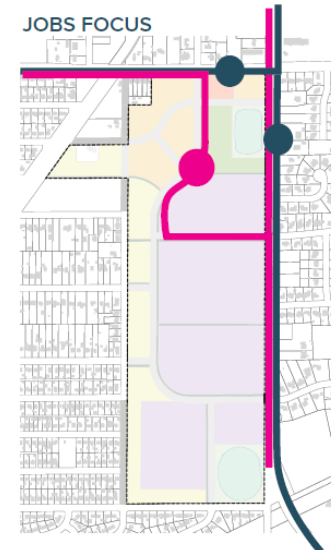
#### EXISTING CONDITIONS



#### HILLTOP

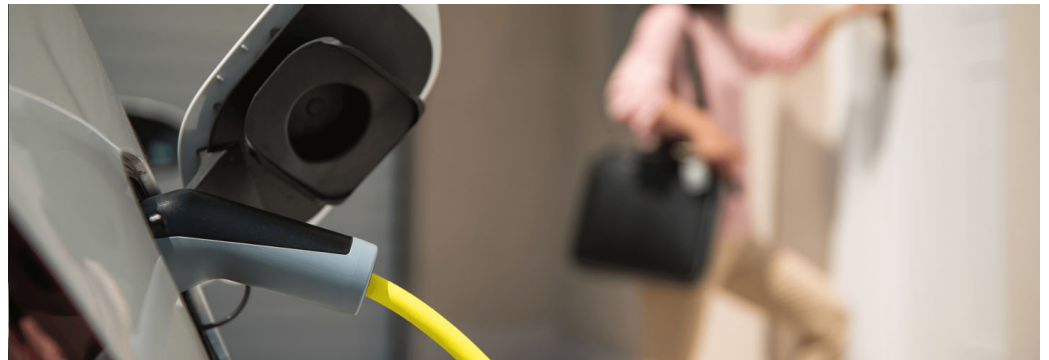
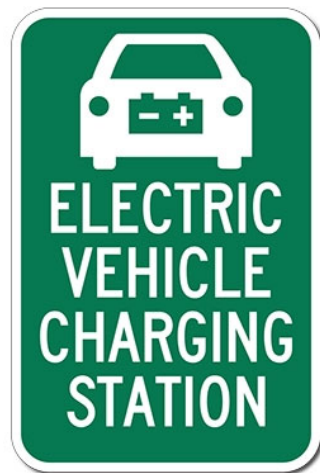


#### JOBS FOCUS



# Hillcrest LEED Strategies: EV Charging

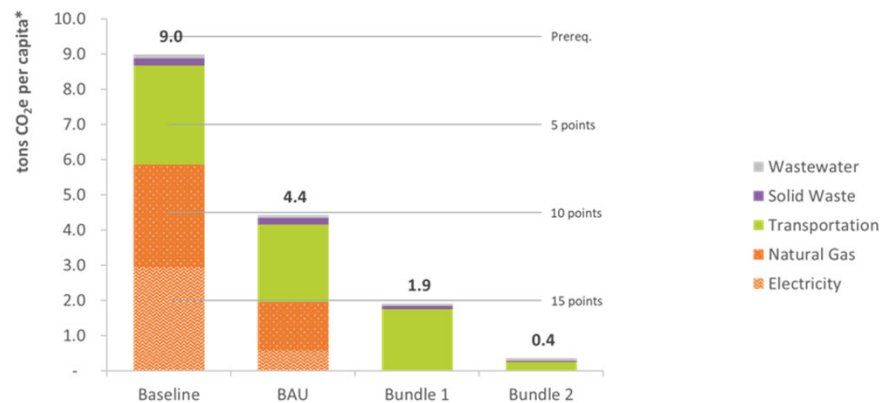
## Alternative Fuel Vehicles



# Hillcrest LEED Strategies: Energy/GHG

## Energy & Greenhouse Gas Emissions

### Hillcrest GHG Emissions Scenarios



\*LEED's definition of per capita includes both resident and working population







## Hillcrest LEED Strategies...

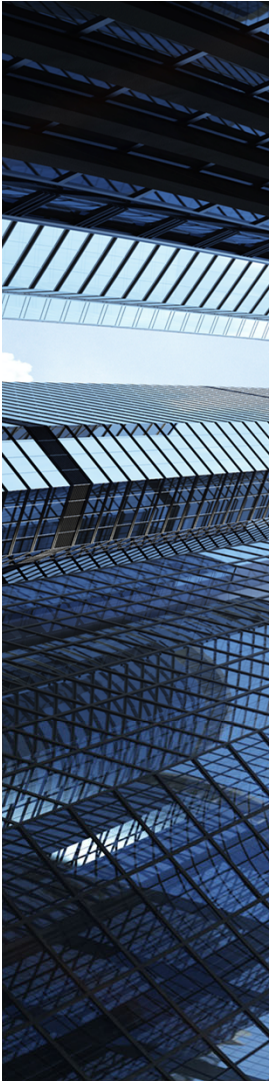
### Other Strategies:

- Reduce light pollution with efficient/cut-off light fixtures
- CWM Diversion Plan (70% infrastructure diversion goal)
- Outdoor Air Quality Monitoring
- Affordable Housing Policy
- Innovations

### COMMUNITY PRIORITIES

- 5 THEMES
- CONNECT**  
build strong connections to existing infrastructure and community systems
  - ACTIVATE**  
spark community and economic activity through innovative development
  - CONSERVE**  
conserve existing site features that celebrate the character and ecological value of the site
  - BLEND**  
thoughtfully blend the new development into the existing neighborhoods
  - BUILD**  
provide new, desired, and needed types of jobs, parks, retail and new housing through site redevelopment





# Questions?

