



**SAINT PAUL**  
PUBLIC WORKS

## **RECYCLING AND GARBAGE SERVICES**



### **2021 ANNUAL GUIDE FOR RESIDENTS**

Recycling program information  
Garbage program rates and services  
Waste reduction opportunities

**[STPAUL.GOV/PUBLICWORKS](http://STPAUL.GOV/PUBLICWORKS)**



# Contents

Recycling and Garbage Services	3
Recycling and Garbage Programs	4
Recycling Guide	5
Recycle Smart	6
Garbage Services	8
Garbage Billing	9
Bulky Items	10
Service Holds and Walk-up Service	11
Annual Fees and Garbage Rates	12
Collection Information	13
Carts	14
Winter Collection Guidelines	15
Reduce and Reuse	16
Repair and Additional Resources	17
Drop-Off Disposal Options	18
Household Hazardous Waste	19
Food Scraps (Organics)	20
Minimizing Your Food Waste	21
Residential Yard Waste	22
Contact Us	23

# Recycling and Garbage Services

The City of Saint Paul contracts with Eureka Recycling and the St. Paul Haulers, LLC, to provide Citywide recycling and garbage services to residential properties. Having residents participate in the City's recycling and garbage programs helps Saint Paul track and meet our community's waste diversion goals and improves the livability and safety of our neighborhoods.

Recycling is collected weekly in City-owned, blue recycling carts. Recycling collection services are provided to all residents living in single family homes and multi-unit apartments. Garbage is collected weekly or every other week in City-owned, gray garbage carts for residents living in 1-4-unit properties. Yard waste service is also available for residential properties at an additional cost from the garbage hauler.



*Protecting public health and safety is a top priority for the City of Saint Paul as we work with our recycling and garbage haulers to minimize community spread of the coronavirus (COVID-19). Maintaining regular recycling and garbage collection is an essential City service, and we continue to monitor and minimize any potential impact to service.*

## 2020 PROGRAMS AT-A-GLANCE

**59,890**

**tons of garbage** was collected from 1-4 unit properties, a 6% increase from 2019

**25,052**

**tons of recyclables** were collected from all residential properties, a 7% increase from 2019

**21,123**

**bulky items** were collected from residents by garbage haulers, a 35% increase from 2019

**1,427**

**tons of yard waste** was collected, and 1,100 tons of food scraps/organics were collected

**578**

**tons of recyclables** were taken to the drop-off center, a 28% increase from 2019

**1.8**

**pounds of garbage** was disposed of daily by the average Saint Paul resident (from 1-4 unit properties)

# Recycling and Garbage Programs

**Sustainable waste management programs are essential to creating a healthy and safe Saint Paul environment for all.** The City of Saint Paul is working with residents to reach a goal of 65% waste diversion (keeping materials out of our landfills) by 2025.

Saint Paul's recycling and garbage programs provide outreach, education, tools, and resources for residents to reduce, reuse, recycle, and safely dispose of materials to promote a sustainable and healthy community.

## Where do my recycling and garbage go?

Recyclables are processed and sorted at Eureka Recycling's Material Recovery Facility and transported to markets in the Twin Cities metro area, the Midwest, and North America to be made into new consumer products.

Garbage collected in the City of Saint Paul goes to the Ramsey/Washington Recycling & Energy Center (R&E Center). The material is processed to produce fuel used by Xcel Energy. The material processed from Saint Paul generates enough electricity to power 12,500 homes.



# Recycling Guide



**DO NOT PUT RECYCLABLES IN PLASTIC BAGS.**

## PLASTIC CONTAINERS

**Empty and rinse.  
Replace caps.**



### Bottles and jugs:

- Water, soda, and juice bottles
- Milk and juice jugs
- Shampoo, soap, and lotion bottles

### Cups and Containers:

- Yogurt, pudding, and fruit cups
- Margarine, cottage cheese, other tubs, and lids
- Clear plastic produce and clamshell containers

**NO: #3, #4, #6, #7 or black plastic, plastic bags, plastic film/wrappers, Styrofoam™, or containers larger than 3 gallons**

## METALS

**Empty and rinse.**

- Food and beverage cans
- Aluminum foil and trays
- Decorative tins and pie tins smaller than 3 gallons
- Empty aerosol cans



**NO: Paint or spray paint cans, propane cylinders, or helium tanks**

## GLASS

**Empty and rinse.  
Remove caps.**

- Food and beverage bottles and jars



**NO: Drinking glasses, window glass, ceramics, or mirrors**

## PAPER

- Office and school papers
- Newspapers and inserts
- Magazines, mail, and books



**NO: Shredded paper, paper egg cartons, paper plates, napkins, paper towels, or coffee cups**

## BOXES

**Empty and flatten.**

- Cardboard
- Delivery pizza boxes
- Cereal, cracker, shoe, and gift boxes
- Refrigerated food boxes
- Toiletry boxes



**NO: Frozen food boxes**

## CARTONS

**Empty and rinse.  
Replace caps.**

- Milk cartons
- Juice boxes
- Soup, broth, and wine cartons



**NO: Paper or Styrofoam™ egg cartons or ice cream cartons**

# Recycle Smart

Recycle Smart! These items are often put in recycling carts by mistake. Residents think they can be recycled – but they can't. This is called “wish-cycling.” These items can damage equipment, harm employees at recycling facilities, and/or do not have a market to be turned into new products.



**DO NOT PLACE THESE ITEMS  
IN YOUR RECYCLING CART.**



**NO LARGE  
PLASTIC ITEMS**



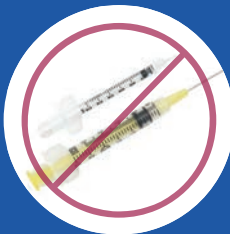
**NO PLASTIC  
BAGS**



**NO SCRAP  
METAL**



**NO CORDS OR  
TANGLERS**



**NO SHARP OBJECTS  
OR NEEDLES**



**NO FUEL OR  
PROPANE TANKS**



**NO HAZARDOUS  
WASTE**



**NO BATTERIES OR  
ELECTRONICS**



**NO TO-GO  
CONTAINERS**



# Keep These Out of Your Cart

## Batteries

Batteries can damage equipment and harm workers collecting and sorting your recycling. Lithium batteries are especially dangerous as they can start fires in trucks or processing facilities. To find a battery drop-off location, visit **RamseyRecycles.com/HHW** or **call2recycle.org/locator**.

## Plastic Items

### Black Plastic

Black plastic cannot be sorted properly at recycling facilities and there is no market for black plastic. Optical sorting machines at recycling facilities cannot identify black plastic from other recyclable plastics.

### Plastic Bags, Film, and Bubble Wrap

Plastic bags, film, and bubble wrap get tangled up and damage the equipment at recycling facilities. Clean and dry plastic bags can be brought to grocery or retail stores for recycling. See details on page 18.

### Large Plastic Items

Large plastic items such as storage tubs, laundry baskets, lawn furniture, and children's toys are not able to be sorted and processed at recycling facilities.

## Scrap Metal

Scrap metal items such as pots, pans, hangers, pipes, shelving, and fencing cannot be put in residents' recycling carts. These items can cause damage to equipment and can harm employees during the sorting process.

## Recycling Resources

### A to Z Recycling and Disposal Guide

Use this online resource list to learn what, how, and where to recycle and properly dispose of items. Visit **RamseyRecycles.com/AtoZ** or call their 24/7 hotline at 651-633-EASY (3279). Interpretive services are available.

### Eureka App

Download Eureka Recycling's free app to check to see what materials can be put in your recycling cart and receive collection announcements. Visit **EurekaRecycling.org**.

# Garbage Services

## USING YOUR GARBAGE CART

Put your cart out by 6 a.m. on your collection day. Do not place your cart in the street.

Make sure your cart lid is **closed**. If the lid is not closed, overflowing bags will be collected for an additional \$3 per bag.

Place your cart so the front is facing outward along the edge of the alley or curb.

Call your hauler for "bulky" item collection.



All household garbage must be bagged and tied.

Make sure your garbage cart is two feet away from your recycling cart and other objects.

Put extra bags of garbage next to your cart (\$3 per bag + tax). The size must not exceed a 35-gallon bag.



**DO NOT PUT NEEDLES, HAZARDOUS WASTE, YARD WASTE, OR ELECTRONIC WASTE INSIDE YOUR RECYCLING OR GARBAGE CARTS.**

## Garbage Collection

To find your collection day and your garbage hauler's phone number, visit [stpaul.gov/collectionmap](http://stpaul.gov/collectionmap).

For the 2021 Collection Schedule, visit [stpaul.gov/garbage](http://stpaul.gov/garbage).



# Garbage Billing

## Quarterly Garbage Service Billing Process

### Bills Sent

Garbage haulers mail out invoices on the 5th day of January, April, July, and October. The invoice covers the next three months (e.g. the January bill is for service in January, February, March).

### Payment Due

Payment is due the 25th of the billing month. Late charges will be applied monthly to unpaid bills.

### City Assessment

At the end of the billing period, past due accounts are sent by the garbage haulers to the City for collection through the Ramsey County Property Tax system. Any garbage payments for that quarter must then be paid to the City.

BILLING PROCESS	
BILLED	DUE
JAN 5	JAN 25
APR 5	APR 25
JUL 5	JUL 25
OCT 5	OCT 25

## Change in Property Ownership

Contact your garbage hauler after the sale has taken place to notify them of the ownership change. You can find your hauler at [stpaul.gov/collectionmap](http://stpaul.gov/collectionmap). You may need to provide proof of sale (i.e. a copy of the deed) to confirm new ownership. For more information visit [stpaul.gov/garbage](http://stpaul.gov/garbage).



## Illegal Dumping

If someone has illegally dumped garbage or large items on your property, you are responsible for properly disposing of the items. Please report illegal dumping in an alley or public right of way to the City's Department of Safety and Inspections at 651-266-8989.



# Bulky Items



**Small Carts**  
2 bulky items  
included per year



**Medium/  
Large Carts**  
3 bulky items  
included per year

**Bulky items are things that are too large to fit inside a cart or are prohibited by law from being placed in your cart.** Bulky items include mattresses, furniture, appliances, and electronics.

If you need to dispose of more than two or three items, you can pay the garbage hauler \$10-35 per bulky item (plus tax) to have them collected. Price lists can be found at [stpaul.gov/bulky](http://stpaul.gov/bulky). Residents can also bring some bulky items to a Citywide Drop-Off event. For dates and details, visit [stpaul.gov/drop-offs](http://stpaul.gov/drop-offs).

## Bulky Item Collection Steps

### 1. Contact your garbage hauler to schedule collection.

- » The scheduled collection day may be different than your normal garbage collection day.
- » All pick-ups will be scheduled within seven days of your request.

### 2. Place your bulky item(s) out for collection.

- » Do not place the bulky item(s) in your garbage cart.
- » Place bulky item(s) beside your garbage cart at your regular collection location, following your garbage hauler's instructions.
- » Bulky item(s) must not have any food or liquids in them.

No construction or demolition materials are accepted. To find disposal options for these materials visit [RamseyRecycles.com/AtoZ](http://RamseyRecycles.com/AtoZ).

Each year, one live holiday tree can be collected per residential property unit between January 2-15 at no additional cost. Check the size requirements with your garbage hauler at [stpaul.gov/collectionmap](http://stpaul.gov/collectionmap).



# Service Holds & Walk-up Service

## Service Holds

### **Temporary Service Holds: Contact your Garbage Hauler**

During temporary absences, residents can request a suspension of garbage service. Holds can be placed twice per calendar year for a minimum of four weeks up to a yearly total of 26 weeks.

Requests must be made to your garbage hauler at least two weeks prior to the start of the Temporary Service Hold. If the service hold goes into effect mid-billing cycle, you will see a credit on your next bill after your garbage service resumes. To learn more and to access forms, visit [stpaul.gov/servicehold](http://stpaul.gov/servicehold).

### **Unoccupied Dwelling Unit: Contact the City**

Contact the City if you own a property and have a unit that will be vacant for an extended period. You can request an Unoccupied Dwelling Registration Form by contacting the City at 651-266-6101; garbage haulers cannot process these requests. These will be evaluated annually. To learn more and to access forms, visit [stpaul.gov/servicehold](http://stpaul.gov/servicehold).

## Walk-Up Service

If you have physical limitations which prevent you from taking your cart to the curb or alley, you can request walk-up service from your garbage hauler at no additional cost.



If you do not meet the criteria as a less able-bodied individual, you can request walk-up service for an additional fee:

- » **Less than 100 feet: \$25/month, plus tax**
- » **More than 100 feet: \$50/month, plus tax**

Contact your garbage hauler to request this service or get a request form to send to your garbage hauler at [stpaul.gov/walkup](http://stpaul.gov/walkup).

Walk-up service is also available for recycling from Eureka Recycling. You can set up service by calling Eureka Recycling at 651-222-7678.



# Annual Fees & Garbage Rates

The residential recycling and garbage programs each have an annual fee that is collected with your Ramsey County property taxes.

The 2021 annual recycling fee is \$60.24 per unit for 1-3-unit properties and \$38.16 per unit for properties with 4 units and more. This fee pays for residential and public space recycling collection, a recycling dropoff center, program administration, recycling carts, anti-litter programs, clean up programs, education, and outreach. There are three sizes of recycling carts offered for weekly collection (see below).

The 2021 annual garbage fee is \$27.12 per unit for 1-4-unit properties. This fee covers program costs such as garbage carts, program administration, education, and outreach.



## 2021 Garbage Service Options and Prices

Your quarterly garbage service bill is mailed by your garbage hauler and includes all county and state taxes.

Cart Size	Collection Frequency	# of Included Bulky Items	Quarterly Rate
Small	Every other week	2	\$59.23
Small	Weekly	2	\$69.04
Medium	Weekly	3	\$94.87
Large	Weekly	3	\$101.23



# Collection Information

## Find Your Collection Day

Most Saint Paul neighborhoods receive recycling and garbage collection services on the same day. To find your collection day, as well as your hauler's contact information, call 651-266-6101 or visit [stpaul.gov/collectionmap](http://stpaul.gov/collectionmap).

## Missed Collection

If your recycling or garbage cart(s) were set out correctly by 6 a.m., but not collected by 8 p.m. on your collection day, please call Eureka Recycling or your garbage hauler by noon the following day to report a missed collection. Find contact information on page 23.

If you missed placing your garbage out for collection, you can contact your garbage hauler and schedule a special "return service" collection. The service fee is \$40 plus tax per collection.

## Holiday Collection

Your regular recycling and garbage collection will be delayed one day if it falls on or after the following holidays:

- » Memorial Day
- » 4th of July
- » Labor Day
- » Thanksgiving Day
- » Christmas Day
- » New Year's Day

To find or print a 2021 Holiday Collection Schedule in a calendar format, visit [stpaul.gov/garbage](http://stpaul.gov/garbage).

## Education Tags

If your hauler was unable to collect your recycling or garbage, they may leave an education tag on your cart. If you receive a tag, please correct the issue by your next collection day.





## Correct Cart Placement

- » On your scheduled collection day, place carts at the edge of the alley or curb by 6 a.m. with the openings facing the alley/street.
- » All materials must fit inside the carts, with the lids closed.
- » Leave two feet of space between the carts and other objects such as trees, fences, garages, and snow piles.
- » Do not place carts in the street. Keep them on a driveway or boulevard no more than three feet from the curb.
- » Remove carts from the curb within 24 hours after your collection day.
- » If you have an alley collection, make sure house numbers are posted and visible on your garage or the back of your house.

## Changing Your Cart Size

### Recycling

Residents can contact Eureka Recycling to change cart size (once per year) or request additional carts at no cost.

### Garbage

Property owners can change their garbage cart size once per year at no cost; additional changes are \$25. Contact your garbage hauler to request a cart change.

## Damaged Carts

Recycling and garbage carts are the property of the City of Saint Paul. Do not paint or alter your carts. If your carts are damaged because of animals, accidents, or regular wear and tear, they will be repaired or replaced at no charge. Contact Eureka Recycling or your garbage hauler to report a damaged cart.





# Winter Collection Guidelines



## Winter Cart Placement

- » Clear snow and ice from around carts.
- » Place carts on flat ground, not on snowbanks. Prevent carts from freezing by not placing them in large puddles.
- » Put carts on curb or driveway. Carts in the street interfere with snow plowing.

## Sign Up for Snow Emergency Alerts

Snow Emergencies do not necessarily impact your regular collection.

- » Call 651-266-PLOW (7569) for a recorded message to hear if the city has declared a Snow Emergency.
- » Visit **[stpaul.gov/snow](http://stpaul.gov/snow)** to learn more about Saint Paul's winter parking rules.
- » Sign up for Snow Emergency alert emails and texts (available in English, Spanish, Hmong, Somali, or Oromo).
- » Use the free Snow Emergency parking map at **[stpaul.gov/snow](http://stpaul.gov/snow)**.



The City of Saint Paul does not plow alleys. Please work with your neighbors to keep your alley plowed and accessible during winter months.

# Reduce & Reuse

## Creating Low-Waste Events

Saint Paul has resources to help you reduce waste and recycle more at your public or private events. Reserve containers, and find links to required forms and waste management planning guides at [stpaul.gov/eventrecycling](http://stpaul.gov/eventrecycling).

- » **Container Lending Program:** Recycling and organics containers are available to help reduce waste at your gatherings and events.
- » **Waste Management Resource Guide:** Waste Management Plans are required as a part of Saint Paul's event permitting process. Organizers of events, parades, races, and public gatherings are required to submit a waste management plan to the City.

## Product Reuse Center

Visit the Product Reuse Center at Ramsey County's year-round household hazardous waste collection site for free paint, automobile products, household cleaners, and more! You can also donate products for others to use. Find details at [RamseyRecycles.com/HHW](http://RamseyRecycles.com/HHW).

Before disposing of an item, consider if it can be reused or donated. For a list of donation locations, visit [RamseyRecycles.com/Reuse](http://RamseyRecycles.com/Reuse).





## Fix-It Clinics

Attend a Fix-it Clinic to learn how to repair small household appliances, clothing, and more! Volunteers help residents troubleshoot problems and fix the items. Find details at [RamseyRecycles.com/FixItClinics](https://RamseyRecycles.com/FixItClinics).

## The Minnesota Tool Library

Access low-cost tools and classes to help you complete automotive, carpentry, electrical, yard and garden, and plumbing repair projects. For more information, call 651-644-1882 or visit [mntoollibrary.org](https://mntoollibrary.org).

## ComeClean! Program

Help clean, beautify, and improve your neighborhood by reducing and cleaning up litter. Community groups, companies, and families can adopt a specific block(s), adopt a public trash container, or organize a one-time litter clean up event with assistance from the City. To learn more, call 651-266-6199 or visit [stpaul.gov/come-clean](https://stpaul.gov/come-clean).

# Drop-off & Disposal Options

## Citywide Drop-Off Events

Saint Paul partners with local district councils to organize annual citywide drop-off events. Residents can properly dispose of large items, recycle materials not collected in the residential collection program, and share usable goods with others. For information, visit [stpaul.gov/drop-offs](http://stpaul.gov/drop-offs).

## Free Recycling Drop-Off Center

Saint Paul residents and small businesses can bring their recyclable materials to the Drop-Off Center at 309 Como Avenue, Saint Paul. The Drop-Off Center is open Monday - Friday 8 a.m. - 4:30 p.m. and Saturday 8 a.m. - noon. See an accepted list of materials on page 5.

## Cardboard Recycling

All cardboard must be flattened and fit loosely in your recycling cart. If you have large amounts of cardboard, you can bring it to the Recycling Drop-off Center located at 309 Como Avenue in Saint Paul.

## Plastic Bag Recycling

Do not place any plastic bags or film in your recycling cart. Avoid using plastic bags by bringing reusable bags to the store. To find a drop-off recycling location for plastic bags and film, visit [plasticfilmrecycling.org](http://plasticfilmrecycling.org).

## Electronic Waste

It is illegal to dispose of electronic waste, such as TV's, computers, and cell phones in the recycling or garbage cart because many of these items contain hazardous materials. These items may qualify for collection under the City's Bulky Item Collection Program. For more information contact your garbage hauler, drop electronic items off at a Citywide Drop-Off event, or visit [RamseyRecycles.com/AtoZ](http://RamseyRecycles.com/AtoZ).

## Medicine Collection

Safely dispose of expired and unused medication for free at the Ramsey County Law Enforcement Center. Protect our environment by never flushing medication down the drain or disposing of it in the garbage. Find more information at [RamseyRecycles.com/medicine](http://RamseyRecycles.com/medicine).



# **Household Hazardous Waste**

If a container has the words “Caution,” “Warning,” “Danger,” or “Poison” on the label and still has product inside, it does not belong in the garbage or recycling. Use Ramsey County’s free household hazardous waste collection sites for safe disposal. Photo ID required.

## **Ramsey County Year-Round Collection Site**

**Bay West, Inc. - 5 Empire Drive, Saint Paul**

### **April - November Hours**

Tuesday - Friday: 11 a.m. - 6 p.m.

Saturday: 9 a.m. - 4 p.m.

Sunday - Monday: Closed

### **December - March Hours**

Friday: 9 a.m. - 4 p.m.

Saturday: 9 a.m. - 4 p.m.

Sunday - Thursday: Closed

For mobile collection sites April-October, visit **[RamseyRecycles.com/HHW](https://www.ramseyrecycles.com/HHW)**.

## **Accepted Items**

### **AUTOMOTIVE PRODUCTS**

- Antifreeze
- Automotive fluids
- Gasoline
- All batteries
- Oil filters
- Used oil



### **HOUSEHOLD PRODUCTS**

- Adhesives
- Aerosols
- All Batteries
- Cleaners
- Fire extinguishers
- Fluorescent bulbs
- Mercury-containing items
- Paint, stains, & varnishes



### **LAWN AND GARDEN PRODUCTS**

- Bug Killers/ Repellents
- Herbicides
- Pesticides
- Pool chemicals
- Weed killer



### **PERSONAL CARE PRODUCTS**

- Nail polish and remover
- Aerosol cans
- Needles/syringes
- Perfume and cologne



### **MISCELLANEOUS PRODUCTS**

- Cell phones
- Propane tanks
- String lights
- Electrical cords



# **Food Scraps (Organics)**

Uneaten leftovers, forgotten produce, spoiled food, food scraps, and other organic material account for more than 30% of residential garbage. Before the food reaches each household, considerable resources have been expended to grow, transport, package, and distribute those items. Reducing food waste saves money and reduces pollution, learn more at [stpaul.gov/foodwaste](http://stpaul.gov/foodwaste).

If you are unable to prevent food waste, the best way to dispose of food scraps and other organic materials is to recycle them through composting in your backyard or at a drop-off location. To find information about backyard composting, and a full list of accepted household organic materials and collection site locations visit [stpaul.gov/organics](http://stpaul.gov/organics).

Ramsey County offers a free food scraps starter kit for residents who want to recycle food scraps. The kit includes a small kitchen caddy, compostable bags, and helpful tips. Kits can be picked up at Ramsey County yard waste sites.

## Accepted Household Organics (for Drop-off)

### Food Scraps

- » Fruits & Vegetables
- » Meat & Seafood
- » Dairy Products
- » Coffee Grounds

### Soiled Paper

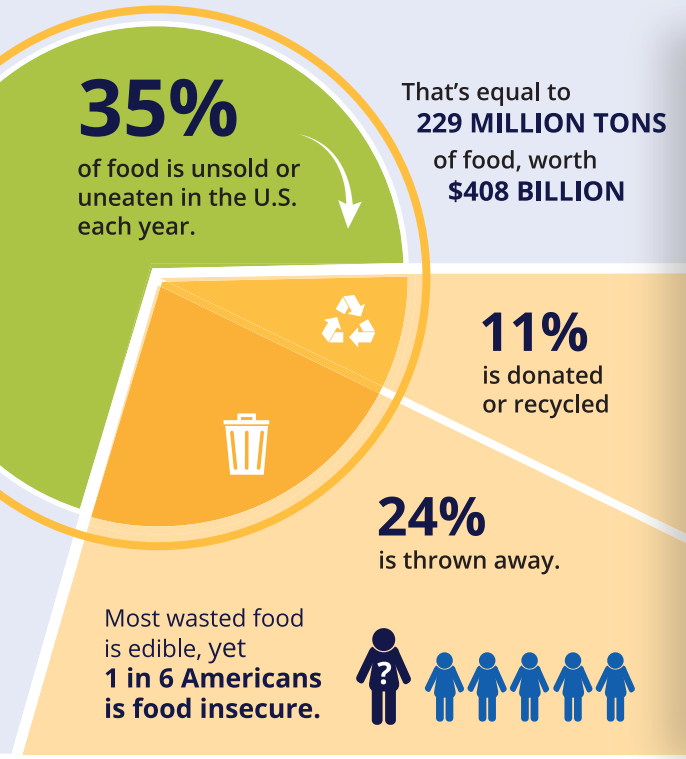
- » Napkins
- » Paper Towels
- » Paper Egg Cartons
- » Paper Coffee Filters

### BPI Certified Products

- » Products with the BPI label

		LEAVES & GRASS	TREES & SHRUBS	ORGANICS RECYCLING
COMMUNITY DROP-OFF SITES	<b>Mac-Groveland Organics Site</b> Off Grand Ave. near Macalester St. *Sign up required. Visit <a href="http://macgrove.org">macgrove.org</a>			
	<b>Como Park Organics Site</b> 1115 Beulah Ln.			
RAMSEY COUNTY YARD WASTE SITES <a href="http://RamseyRecycles.com/YardWaste">RamseyRecycles.com/YardWaste</a>	<b>Summit Hill</b> 870 Pleasant Ave.			
	<b>Battle Creek</b> 389 S Winthrop St.			
	<b>Midway</b> 1943 Pierce Butler Rt.			
	<b>Frank and Sims</b> 1150 Sims Ave.			





### UNEATEN FOOD ACCOUNTS FOR:

- 4%** of greenhouse gas emissions
- 14%** of all freshwater use
- 18%** of all cropland used
- 24%** of landfill material

Percentages based on total percentages of resources used from farm to fork to landfill.

## In Minnesota, the average family wastes 187 POUNDS OF PURCHASED FOOD EACH YEAR



Each month, that amount of waste is equal to:



**10** EARS OF CORN   OR   **1.5** TURKEYS   OR   **8** PIZZAS

The average household of four could save **\$1,500 each year** in edible food.

Just think how you could use that money instead...

<b>115</b>	<b>600</b>	<b>62</b>
State Fair tickets	bus fares	family passes to Como Pool

Cost savings calculated using published entrance fees as of April 2021.

# Residential Yard Waste

## Collection Service

Optional yard waste collection is available to residents for an additional fee each year from April 15 – November 30. Tree stumps, dirt, and rocks are not accepted in yard waste collection. There are two service options:

### Subscription Service

Residents can contact their garbage hauler and sign up to receive a yard waste cart. The cart, along with up to 8 compostable bags, can be collected each week. The annual fee is \$120.

Please note: If you had a yard waste subscription in 2020, the annual subscription service was automatically renewed in January. Please contact your garbage hauler for service changes or questions.

### Non-Subscription Service

Residents can set out a compostable bag or bundle of yard waste near their garbage cart for a fee of \$3 per bag/bundle, plus tax. Contact your garbage hauler to request this garbage service at least 48 hours before your regular collection day.

## Yard Waste Drop-Off Sites

Saint Paul residents can bring yard waste and food scraps (organics) to Ramsey County yard waste sites for free. Photo ID required. Find information at [RamseyRecycles.com/YardWaste](https://www.ramseyrecycles.com/YardWaste)



# Contact Us

## Recycling

For service-related questions contact Eureka Recycling at 651-222-7678 or email at [info@eurekarecycling.org](mailto:info@eurekarecycling.org).

### Download the Eureka Recycling App!

Receive timely alerts and search what can and can't be recycled. Use this tool online at [eurekarecycling.org](http://eurekarecycling.org) or download the app by searching "Eureka Recycling" in the Apple or Google Play app store.

For additional waste reduction, recycling, and disposal information, contact Saint Paul's Recycling Program at 651-266-6199 or visit [stpaul.gov/recycle](http://stpaul.gov/recycle).

## Garbage

Call your hauler for service and billing issues. To find your garbage hauler, visit [stpaul.com/garbagemap](http://stpaul.com/garbagemap).

Advanced Disposal:	763-786-7233
Aspen Waste Systems:	612-884-8008
Gene's Disposal Service:	651-426-1224
Highland Sanitation:	651-458-0043
Republic Services:	651-286-4590
Waste Management:	763-784-8349

For additional garbage program related questions, contact Saint Paul's Garbage Program at 651-266-6101, email [garbage@stpaul.gov](mailto:garbage@stpaul.gov), or visit [stpaul.gov/garbage](http://stpaul.gov/garbage).

## Ramsey County

For additional waste reduction, recycling, and disposal information, contact the Recycling & Disposal Hotline at 651-633-EASY (3279), (answered 24/7) or visit [RamseyRecycles.com](http://RamseyRecycles.com).