



STPAUL.GOV

CITY OF SAINT PAUL PUBLIC WORKS
September 30 2021

Edgcumbe Road Reconstruction



Agenda

- Project Scope and Schedule
- Proposed Design for Edgcumbe Road
- Construction Improvements
- Utility Work
- Living Through a Construction Project
- Project Contact Information

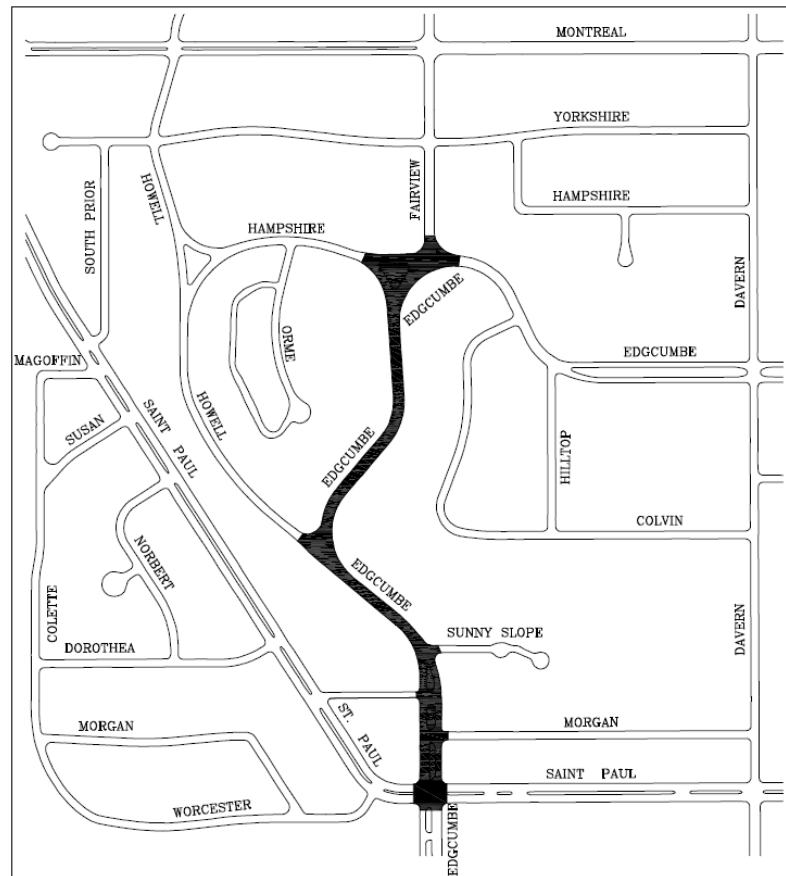


Project Scope

Edgcumbe Road between
Fairview Avenue and St.
Paul Avenue

Construction to begin
summer of 2022

Completion by November
2022





Edgcumbe Road Reconstruction Improvements

- New concrete curb and gutter
- New pavement
- Bicycle lanes
- Concrete driveway aprons
- Sidewalks and ADA-compliant pedestrian ramps
- Utility upgrades
- Lantern-style street lighting
- Urban forest, removal as necessary and tree planting
- Sodded boulevards

Proposed Design for Edgcumbe Road

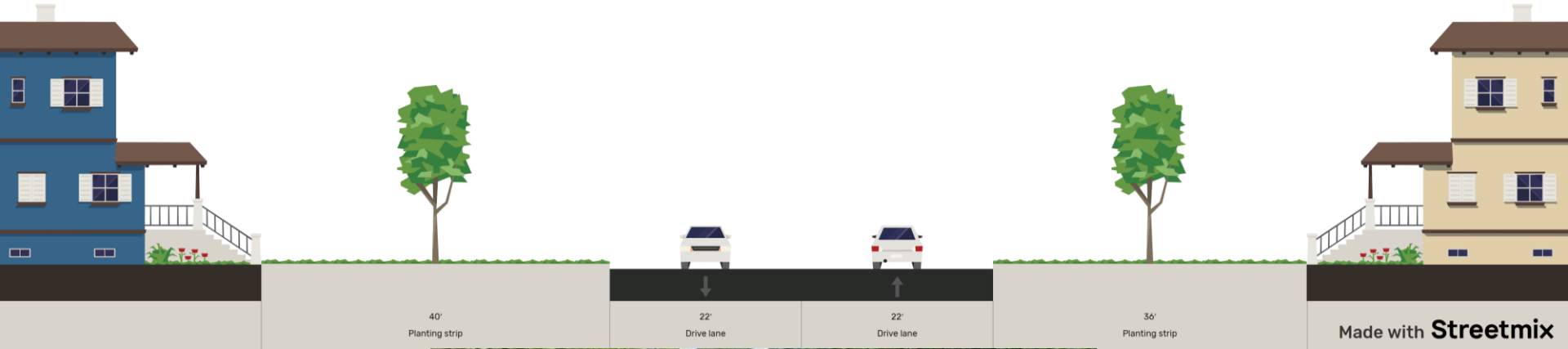


SAINT PAUL
PUBLIC WORKS

STPAUL.GOV

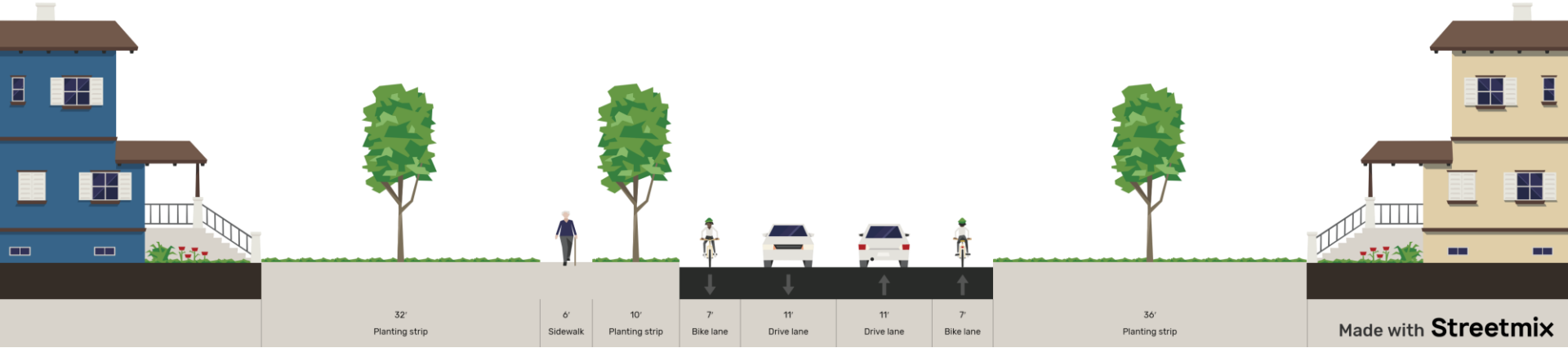


Existing Edgcumbe Road – Fairview to Howell – 120' ROW





Proposed Edgcumbe Road – Fairview to Howell – 120' ROW



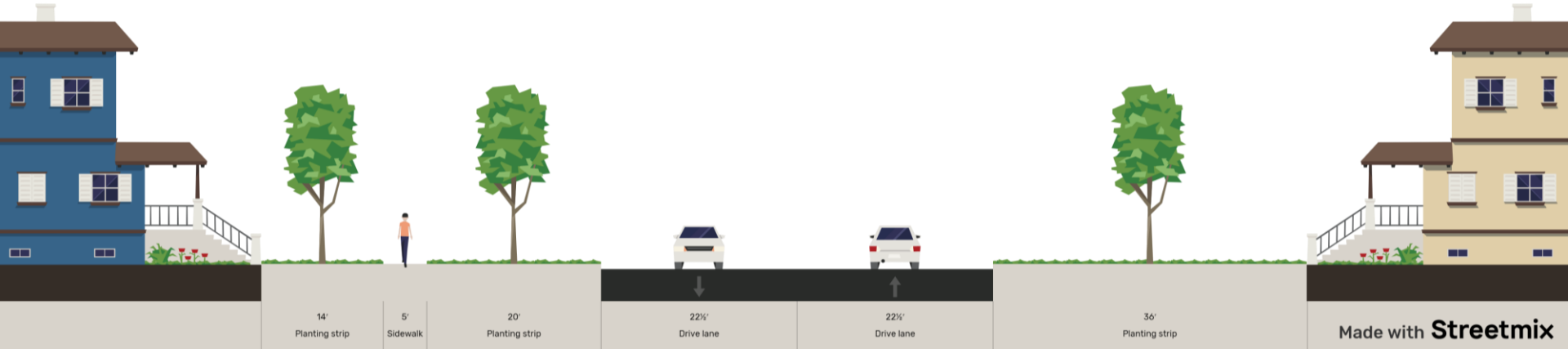


Edgcumbe at Hampshire



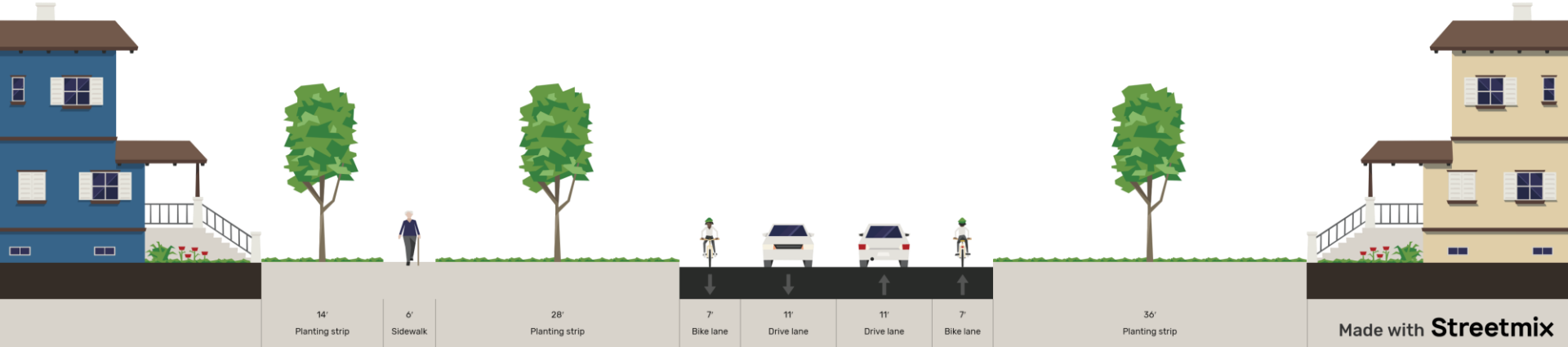


Existing Edgcumbe Road – Howell to Sunny Slope – 120' ROW



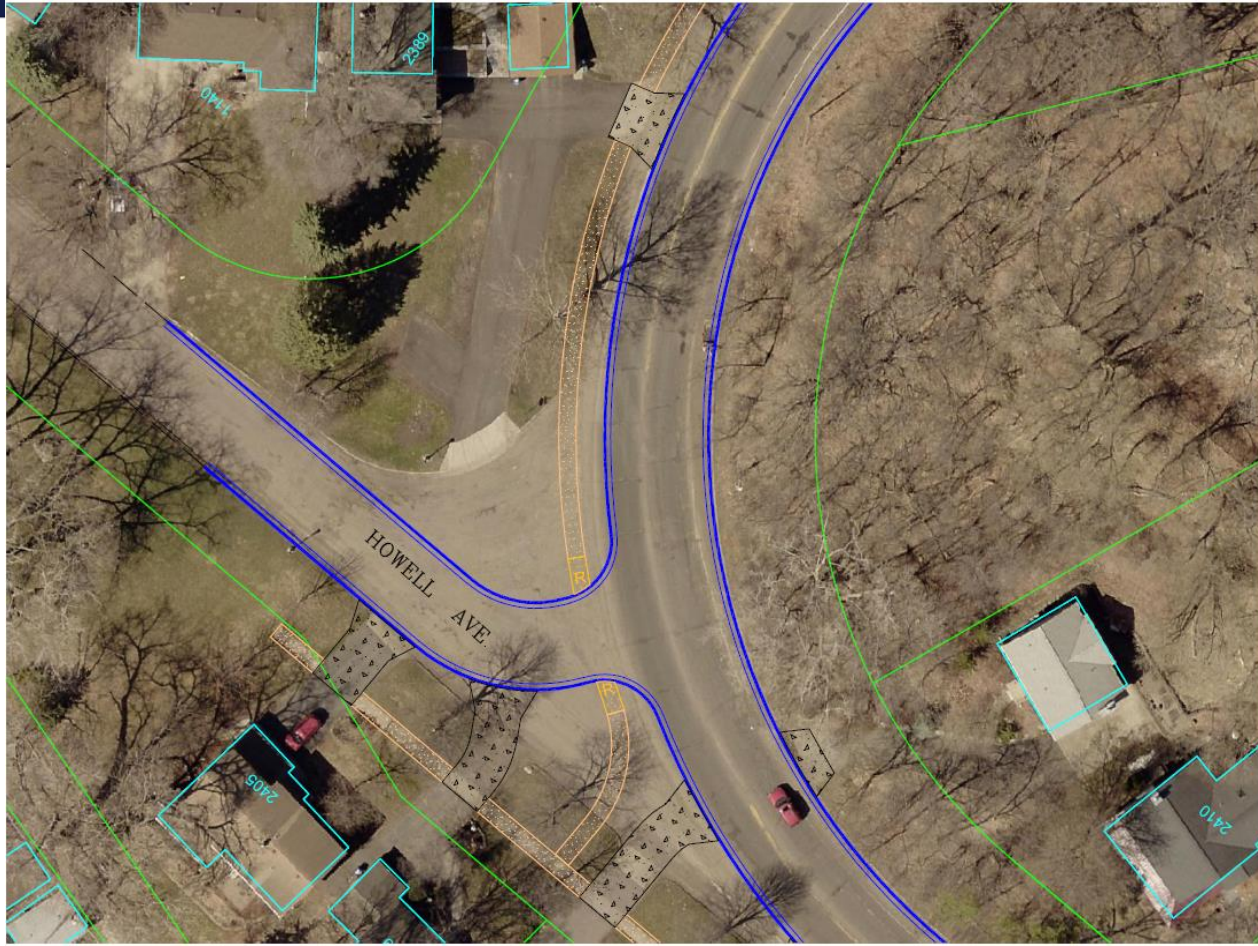


Proposed Edgumbe Road – Howell to Sunny Slope – 120' ROW



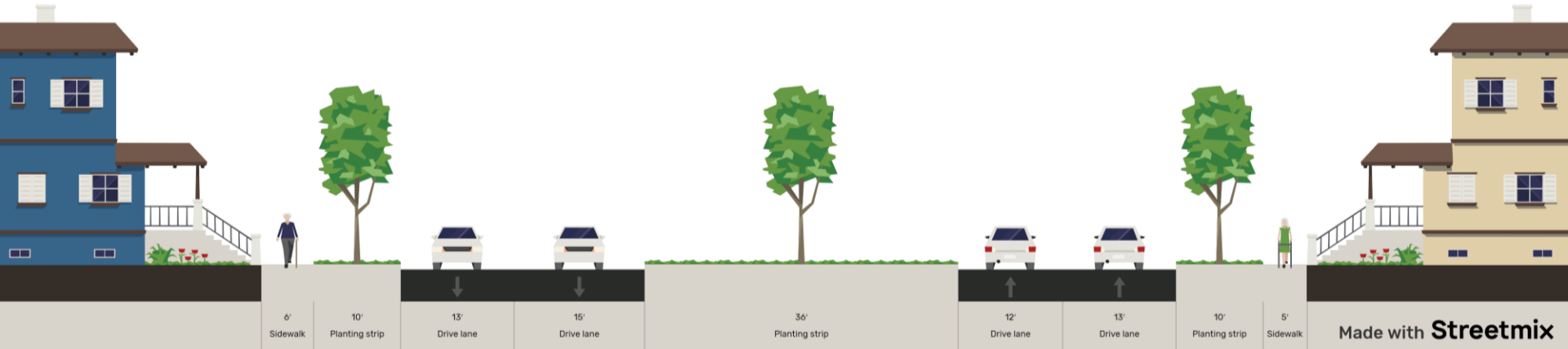


Edgcumbe at Howell



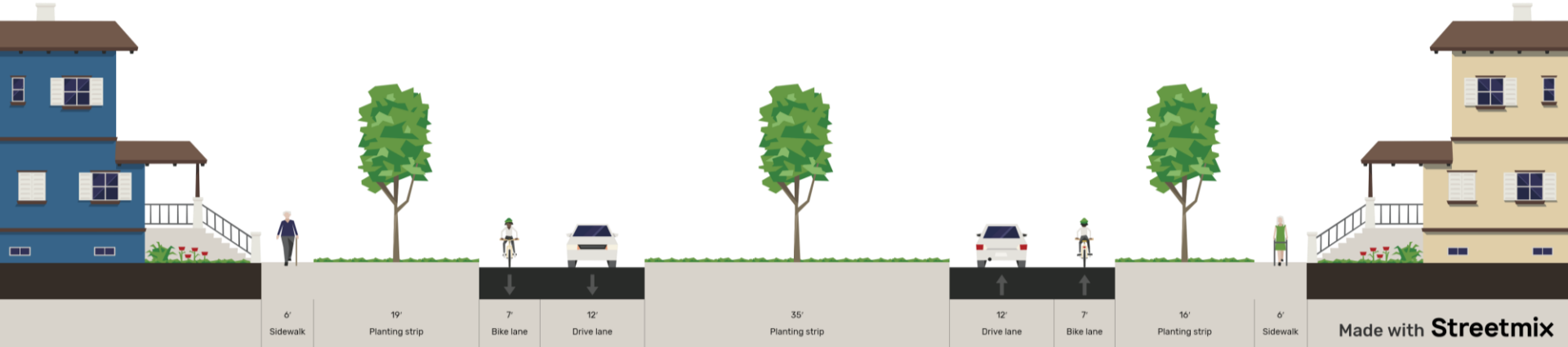


Existing Edgcumbe Road –Sunny Slope to St. Paul Ave – 120' ROW



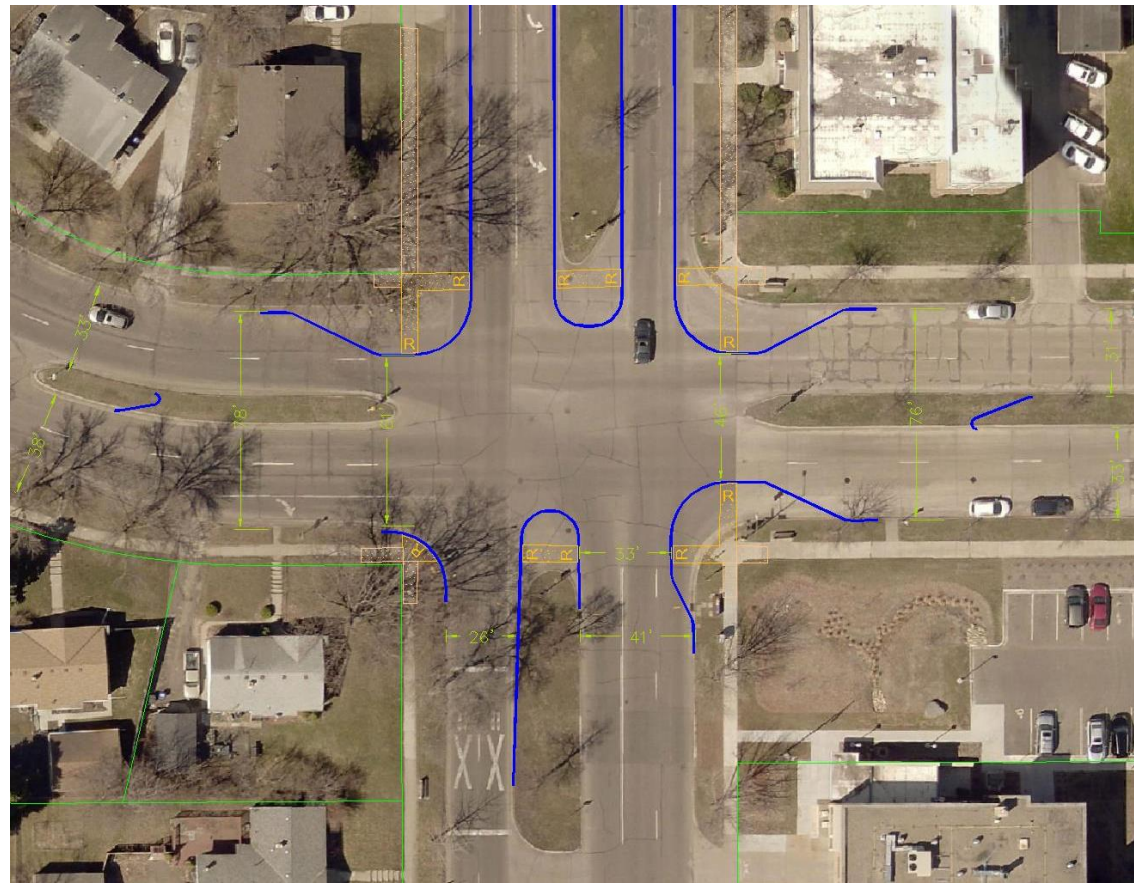


Proposed Edgcumbe Road –Sunny Slope to St. Paul Ave – 120' ROW





Edgcumbe at St. Paul Avenue



Construction Improvements



SAINT PAUL
PUBLIC WORKS

STPAUL.GOV



Concrete Curb and Gutter with Catch Basins

Before



After





Bituminous Pavement

Before



After





Sidewalk Replacement & Infill

- 6-foot sidewalk
- Most sidewalk will be replaced due to substantial utility work
- Walk is typically installed at property line.
- Infill in areas of road reconstruction





ADA-Compliant Pedestrian Ramps

Fan Ramp



Directional Ramp





Driveways

Before



After



- New driveway aprons will be reconstructed at 12-feet.
- Driveway aprons will be concrete regardless of any existing special material



Grade and Sod Boulevards





Boulevard Gardens

If you have a boulevard garden or plants you want to salvage:

- Coordinate with the project to identify areas you do not want sod placed
- Plan to remove plants in the spring ***before construction work begins***





Lantern-style Street Lighting

Before



After





Tree Planting





Tree Planting



- Buckeye
- Catalpa
- Crabapple
- Hackberry
- Honeylocust
- Hybrid Elm
- Ironwood
- Kentucky Coffee
- London Plane
- Oak
- River Birch
- Serviceberry

Edgcumbe Road Utility Work



SAINT PAUL
PUBLIC WORKS

STPAUL.GOV



Water Main Replacement



- Water main is approx. 8' feet deep
- Most existing residential water mains are 6" diameter cast iron pipe.
- Most mains are replaced as 8" diameter ductile iron pipe or 8" PVC dependent on existing soils
- Installation by PW Contractor, SPRWS providing temporary water
- Water main must pass a series of bacterial tests, pressure tests, and conductivity tests prior to being put in service



Temporary Water Mains



- 2" PVC pipe laid in the grassy area or on edge of sidewalk
- Fully Bacterially tested prior to hook-up
- Will become quite warm during the summer
- Water is provided at no cost when connected to temporary water



Temporary Water Connection



- Back fed through outside hose spigot through the use of a grey potable water rated hose
- A wye is installed to allow use of garden hose while connected
- Notification of temporary water will be posted on front door
- Temporary water crew will need to access the water meter inside building twice, once during install and once for the take down



Water Service Connection



- Water services are re-connected to the main once the watermain is fully tested and live
- Most existing copper services are reconnected with only excavation at the watermain
- All lead services are replaced with copper pipe from the main to property line or water service valve box at SPRWS cost



Contact Information for Saint Paul Regional Water Service

Graeme Chaple

Damage Prevention and Inspections Supervisor

Cell: 651-775-3030

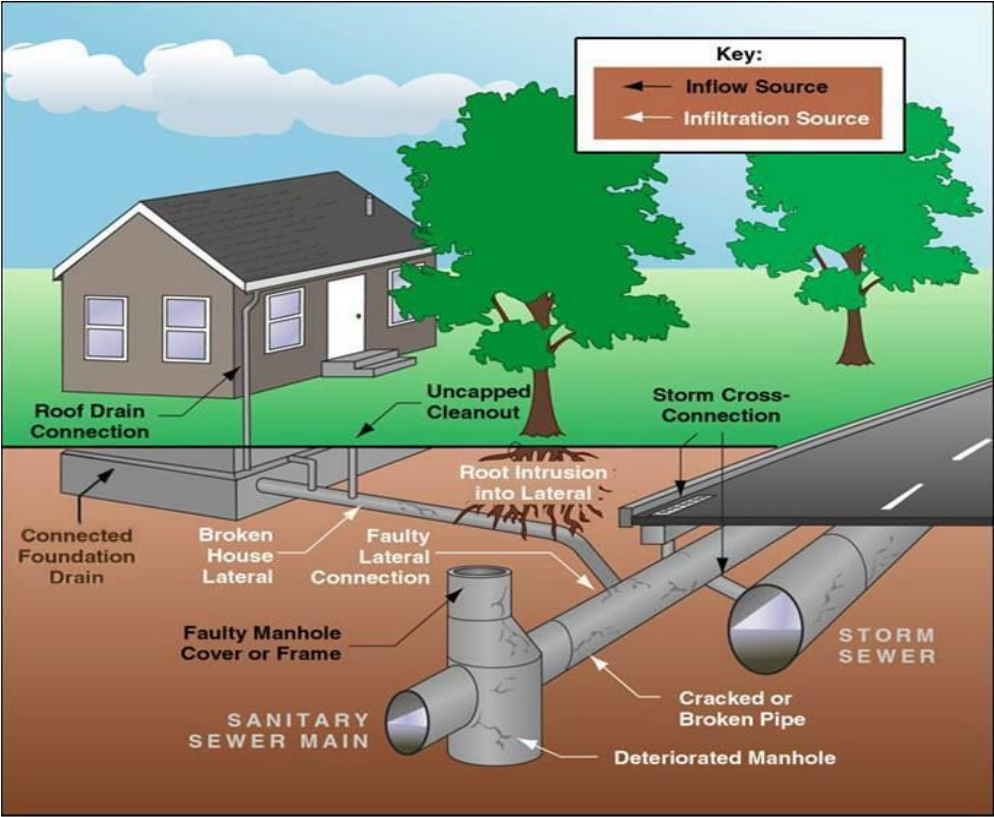
graeme.chaple@ci.stpaul.mn.us

SPRWS Engineering Service Desk

651-266-6270

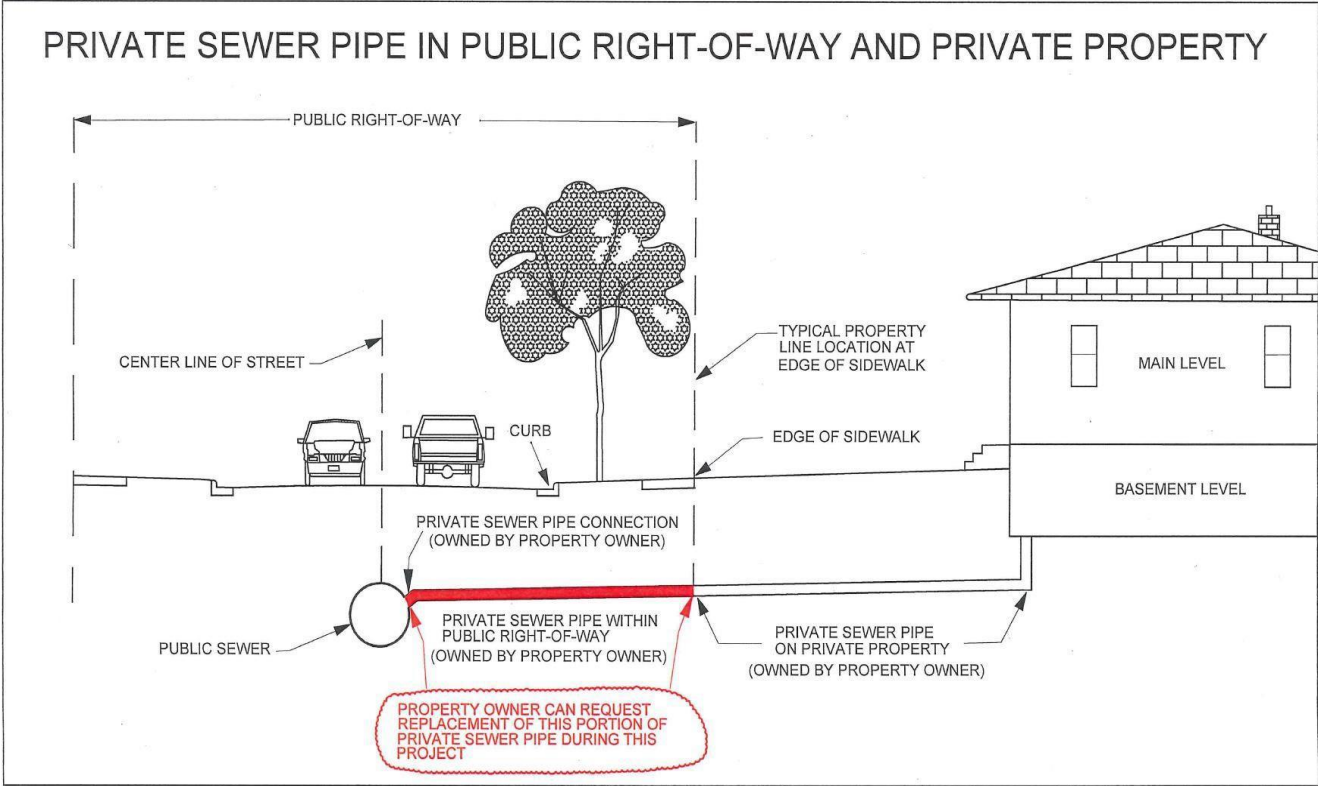


Sanitary Sewer Issues





Sanitary Sewer Replacement Option: Only in Right of Way





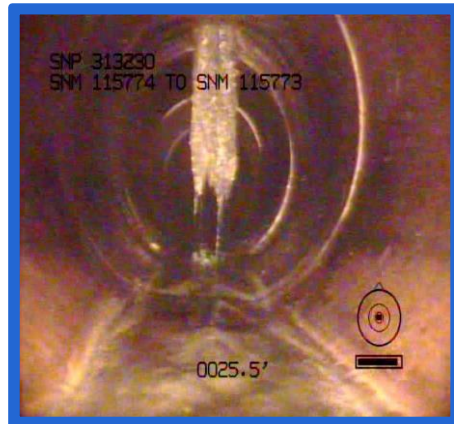
Warning Signs of a Defective Sewer Service

- Does your drain run slowly or gurgle?
- Do you have sewer odors?
- Do you know where your sewer service runs?
- Are there bushes or trees planted over it?
- Has your sewer line ever been cleaned and inspected?
- Do you have a garbage disposal and do you use it for everything?
- Is there a sinkhole or depression near your home, boulevard, or street?



Common Sewer Problems

- Dropped connection to the main
- Broken clay pipe
- Root intrusion





Benefits of Repairing the Sanitary Sewer Service in the Right of Way during Street Reconstruction

- Extends the system service life
- Reduces the risk of:
 - Sewer backups
 - Sinkholes
 - Rodent access
- Cheaper during construction
 - Fixed rate
 - Don't have to pay for street restoration
 - 20-years to pay



Sanitary Sewer Service Repair Cost

| COST COMPARISON INFORMATION | |
|---|--|
| Replacing Your Sewer Service from the Main in the Street to the Property Line in the Right of Way | |
| During Construction | After Construction |
| Approximately \$3,500* | Typically More Than \$5,000* |
| <ul style="list-style-type: none">▪ Cost to property owner can be spread out over a 20-year term/assessment▪ No street restoration costs | <ul style="list-style-type: none">▪ Restoration costs are paid by the property owner |
| If you are interested in optional sewer service replacement as part of street reconstruction – ACT NOW! | |

**Sanitary sewer replacement costs can vary significantly based on the situation*

Living Through a Construction Project



SAINT PAUL
PUBLIC WORKS

STPAUL.GOV



Living Through Construction

- What to expect:
 - Noise
 - Dust
 - Mud
 - Limited Access
 - Inconvenience





Living Through Construction

- Your street will be dug up numerous times
- The work is done in layers and often by different crews doing different types of work
- Plan on 4-5 months of disruption
- Residents and emergency vehicle access will be maintained at all times



Living Through Construction

- All of the construction is done by private construction companies
- Most road work is weather dependent, and rain *will* delay work
- Contractors work 5 to 6 days a week from 7:00 a.m. until 7:00 p.m.
- The City of Saint Paul will have an onsite representative (project inspector) to inspect the contractor's work



Road Closures



Road Closed to Thru Traffic

You can get to your house, but you cannot get all the way through. You will eventually come to a **Road Closed** sign.



Road Closed

Do Not Enter!

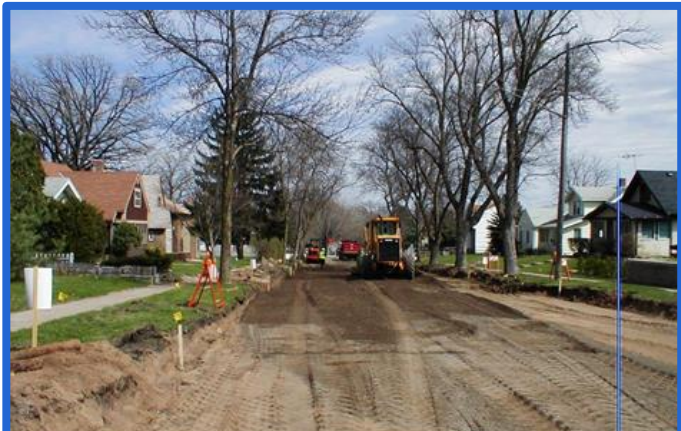


Living Through Construction

- You will receive a letter prior to the start of construction – keep this for names and contact numbers
- A flyer will be handed out a week before construction starts on your block – check front doors for flyers
- Onsite Public Works Inspector – the project inspector should be your **first call** with questions or issues
- Weekly updates will be posted to the city's website at www.stpaul.gov/construction



Living Through Construction



Assessments



SAINT PAUL
PUBLIC WORKS

STPAUL.GOV



General Project Assessment Information

- Street reconstruction projects are funded by:
 - City street reconstruction bonds
 - Assessments to abutting property owners
- The estimated assessment project rate has not yet been determined and will be determined before the project starts
- Property owners are assessed after the construction project is complete
- Separate assessment for optional private sewer repair
- View information about and pay assessments at www.stpaul.gov/assessments



Contacts for Edgumbe Road Reconstruction

| | | |
|-----------------------------------|---------------------|--------------|
| Project Manager | Barb Mundahl | 651-266-6112 |
| Public Works Street Lighting | General Line | 651-266-6200 |
| Parks and Recreation | Forestry Unit | 651-266-6400 |
| SPRWS (Water) | Service Desk | 651-266-6270 |
| Public Works Sewers | Utility Permit Desk | 651-266-6234 |
| Real Estate Section - Assessments | General Line | 651-266-8858 |