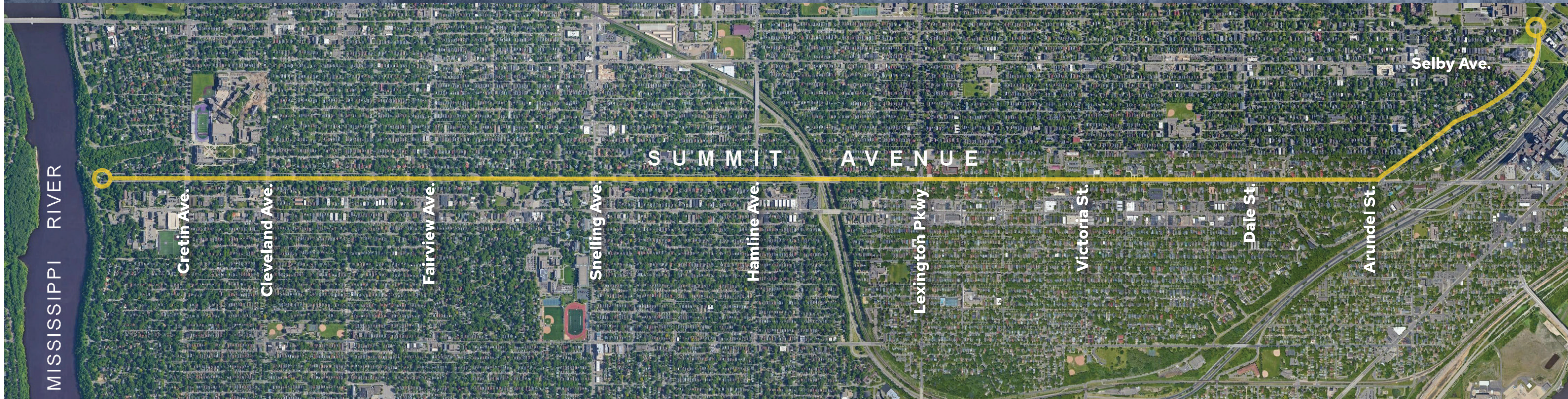


# SUMMIT AVENUE REGIONAL TRAIL MASTER PLAN



## Guiding Principles and Role of Design Advisory Committee (DAC)

1. Advisory role to Parks and Recreation
2. Input balanced with larger citywide needs, Parks and Rec Systems & Vision Plan, Saint Paul Bicycle Plan, Great River Passage & permitting
3. Committee members are representing a larger interest group. City website will become central source of information allowing committee members to network and share information.
4. Decisions by consensus, not voting
5. Work respectfully in group setting
6. Understand and balance needs of all park users
7. Join Committee with open-mind and willingness to listen and hear views or ideas

Encourage ideas **HERE!**



[www.engagestpaul.org/summit](http://www.engagestpaul.org/summit)

Scan the QR code or visit

**If your group would like to join the DAC, please contact:**

Mary Norton - Project Manager, Saint Paul Parks and Recreation

Mary.norton@ci.stpaul.mn.us

651-266-6407

SAINT PAUL  Parks and Recreation



**SAINT PAUL**  
**MINNESOTA**