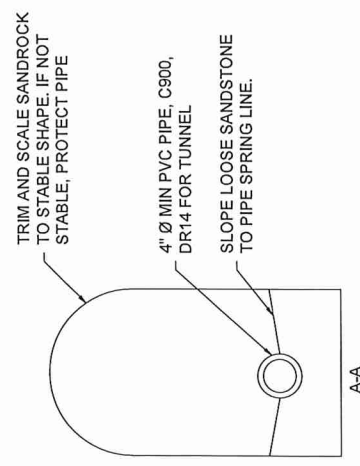


- NOTES:
1. REFER TO SPECIFICATIONS AND INSTRUCTIONS TO HOUSE DRAIN CONTRACTORS FOR FURTHER INFORMATION AND DETAILS.
 2. THIS PLATE IS FOR USE WITH SANITARY RESIDENTIAL CONNECTIONS FROM 4" TO 8" IN DIAMETER. STORM SEWER CONNECTIONS OR CONNECTIONS LARGER THAN 8" WILL REQUIRE A DIFFERENT DESIGN.



PLACE BAG OF CEMENT IN BURLAP SACK. SOAK IN WATER AND COVER THE TOP AND SIDES OF ALL BENDS AND JOINTS

IF MAIN TUNNEL IS BRICK LINED, PLACE BRICK WALL OTHERWISE LEAVE OPEN.

12" SOLID MASONRY BULKHEAD. PLACE TO 12" ABOVE PIPE.

SAWCUT PIPES FLUSH WITH INSIDE WALL OF TUNNEL

BEDDING

I hereby certify that this plan, specification or report was prepared by me or under my direct supervision and that I am a duly Licensed Professional Engineer under the laws of the State of Minnesota

Aaron D. Hass
AARON D. HASS

Date 11-19-21 Lic. No. 26424

APPROVED 11-29-2021
Tault Kurtz
CITY ENGINEER

CITY OF ST. PAUL
DEPARTMENT OF PUBLIC WORKS
RESIDENTIAL SERVICE CONNECTIONS
TO SANDROCK TUNNELS

Date of Revision
NOV 2021

Standard Plate No.
2335