



ST. PAUL-CHANGSHA
CHINA FRIENDSHIP GARDEN
SISTER-CITIES SINCE 1988

PHALEN REGIONAL PARK
ST. PAUL - CHANGSHA CHINA FRIENDSHIP GARDEN

OCTOBER 2021



MN CHINA FRIENDSHIP
GARDEN SOCIETY



HUNAN JIANKE
LANDSCAPE CO. LTD.



PAUL PARKS AND RECREATION
DESIGN AND CONSTRUCTION

MEETING AGENDA

6 PM INTRODUCTIONS

6:10 PARKS AND RECREATION
DESIGN ADVISORY COMMITTEE ROLE
CITY DESIGN PROCESS
PROJECT BACKGROUND
PHASE I - IMPROVEMENTS
PHASE II PROJECT GOALS
PHASE II - IMPROVEMENTS

6:30 CAROL BRASH
AN INTRODUCTION TO A CHINESE GARDEN

6:45 JEFF VANG
THE HMONG MIGRATION STORY

7PM NEXT STEPS

MEETING TIPS

- PLEASE KEEP YOURSELF ON MUTE WHEN NOT TALKING
- IF YOU HAVE QUESTIONS, PLEASE USE THE CHAT
- MEETING RECORDING, ATTENDEES LIST, AND CHAT CONTENT WILL SEND THROUGH NOTES



Guiding Principles and Role of Design Advisory Committee (DAC)

1. Advisory role to Parks and Recreation
2. Input balanced with larger citywide needs, Parks and Rec Systems & Vision Plan, Great River Passage & permitting
3. Committee members are representing larger interest group. City website will become central source of information allowing committee members to network and share information.
4. Decisions by consensus, not voting
5. Work respectfully in group setting
6. Understand and balance needs of all park users
7. Join Committee with open-mind and willingness to listen and hear views or ideas

Design Advisory Role

1. Attend at least 6 (virtual?) meetings from October 2021 to January 2022.
2. Help guide the design and layout for Phase II elements:
 - Patterns Colors
 - Forms Materials
 - Space Cultural storys
3. Provide plan review for public meetings materials

TENTATIVE SCHEDULE

Phase II Dedication	September 2021
Pre-Design/Kickoff	October 2021
Schematic Design	November 2021
Design Development	December 2021
30% Construction Docs	January 2022
60% Construction Docs	February 2022
90% Construction Docs	March 2022
Bidding	April 2022
Construction	Summer 2022
Hmong Plaza	
Pavilion Landscape	

SYSTEM PLAN VISION

OUR GOALS

Helping make Saint Paul the most Livable City in America by facilitating the creation of ...



ACTIVE LIFESTYLES



VIBRANT PLACES



A VITAL ENVIRONMENT

through parks and recreation that...



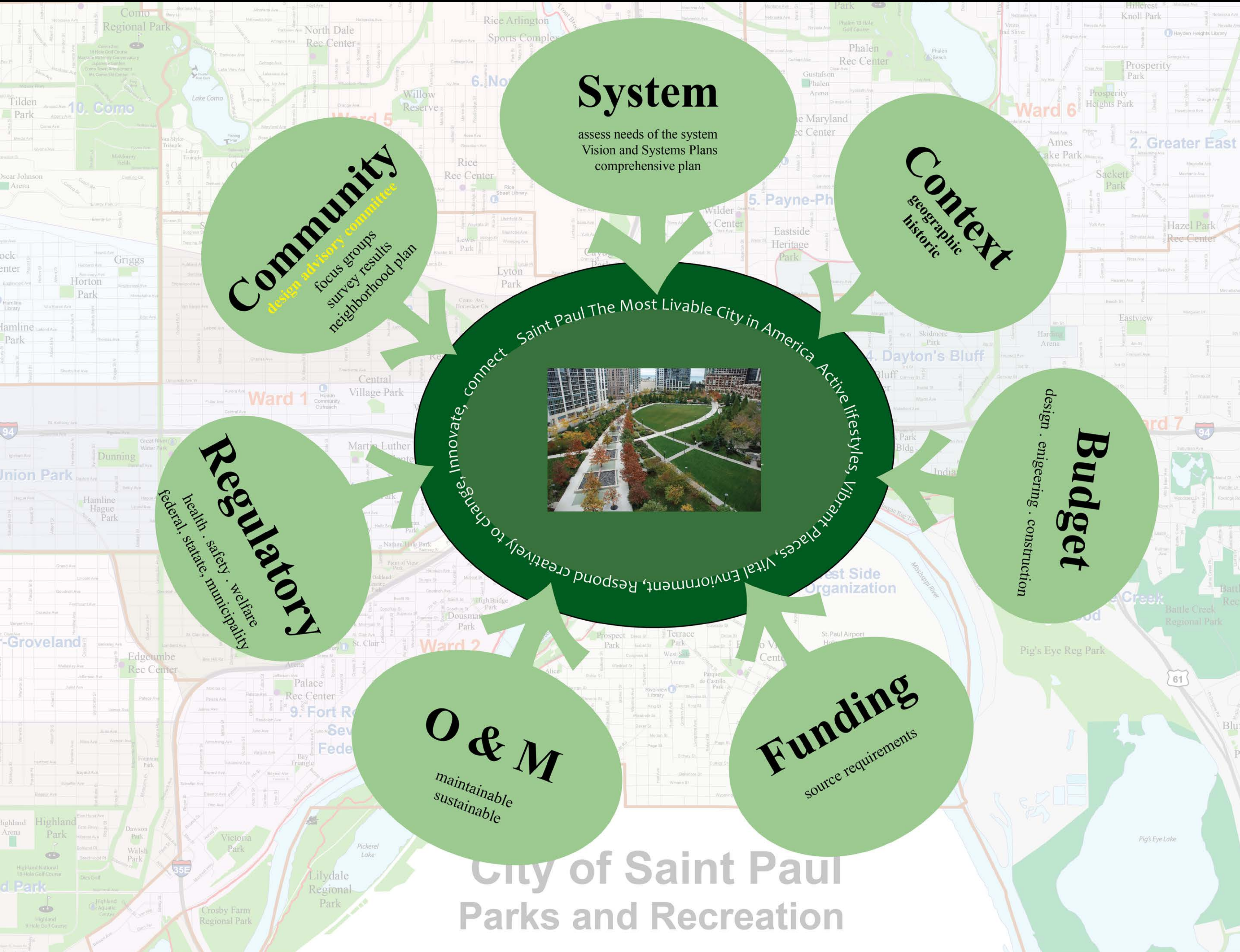
RESPONDS CREATIVELY TO CHANGE



INNOVATES WITH EVERY DECISION



CONNECTS THE ENTIRE CITY



PEOPLES REPUBLIC OF CHINA & HMONG ANCESTRAL HOME



PHALEN REGIONAL PARK
ST. PAUL - CHANGSHA CHINA FRIENDSHIP GARDEN

OCTOBER 2021



MN CHINA FRIENDSHIP
GARDEN SOCIETY



HUNAN JIANKE
LANDSCAPE CO LTD.



PAUL PARKS AND RECREATION
DESIGN AND CONSTRUCTION

2015 GIFT SIGNING CEREMONY



PEANUT
STATUES

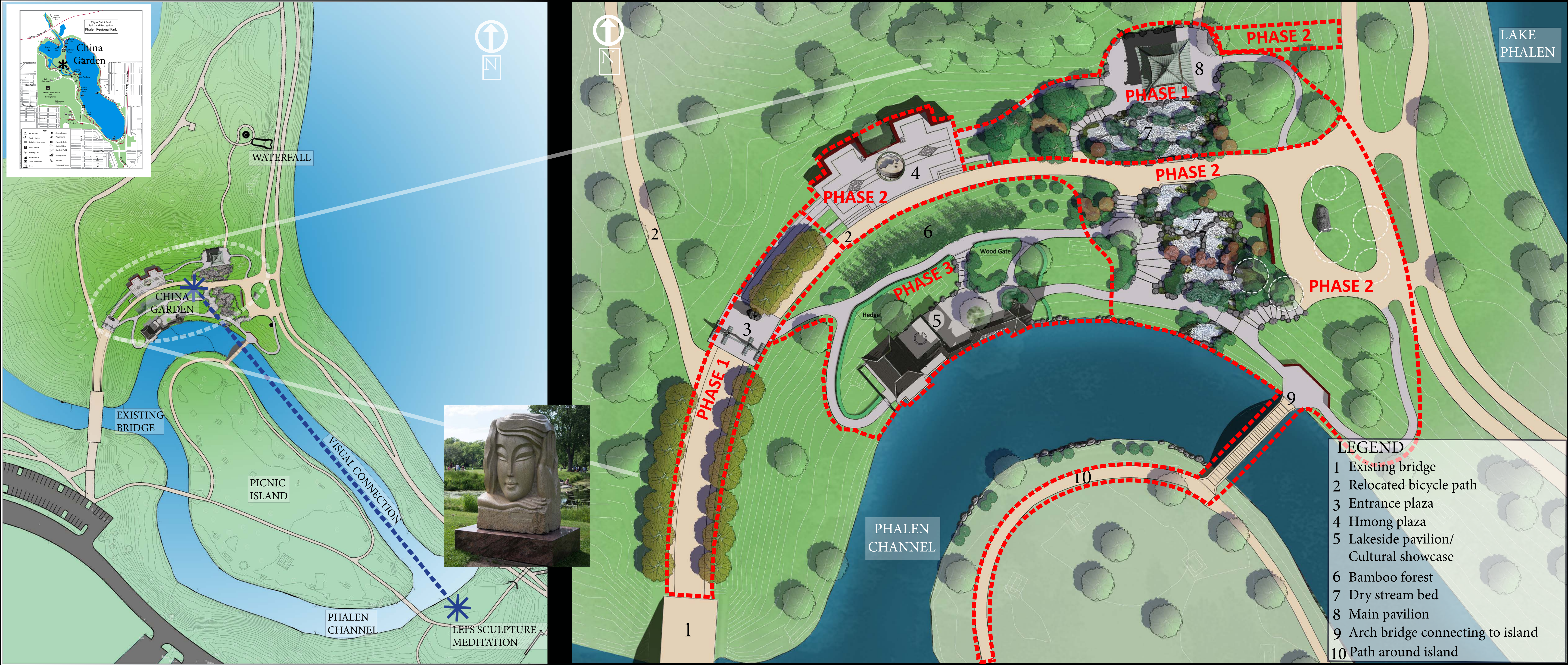


XIANG JIANG PAVILION



2015 SIGNING CEREMONY

GARDEN LOCATION AND DESIGN ORGANIZATION



MASTERPLAN

Living symbol of the peace and friendship that exists between Saint Paul and its sister city Changsha, China (since 1988).
Integrate Changsha-stle Chinese garden design principles within the natural setting of Phalen Regional Park
Act as a bridge between the Minnesota Hmong and the Hmong ancestral home of Changsha, China
Accessible to people of all ages and abilities

Garden Phases

- Phase 1 - Main Pavilion, Western Archway
- Phase 2 - Hmong Plaza, Dry Stream Bed, Donor Wall, Moon Bridge
- Phase 3 - Lakeside Pavilion

BIRD'S EYE VIEW OF GARDEN - VIEW TO THE NORTH



The five elements of Chinese Garden design (vegetation, artistic rocks, water, scenic pathways, and architecture) are reflected in the concept drawings.

PHASE I IMPROVEMENTS & 2019 GRAND OPENING



XIANG JIANG PAVILION PLANTINGS



WEST ENTRANCE ARCHWAY



TEMPORARY DONOR WALL

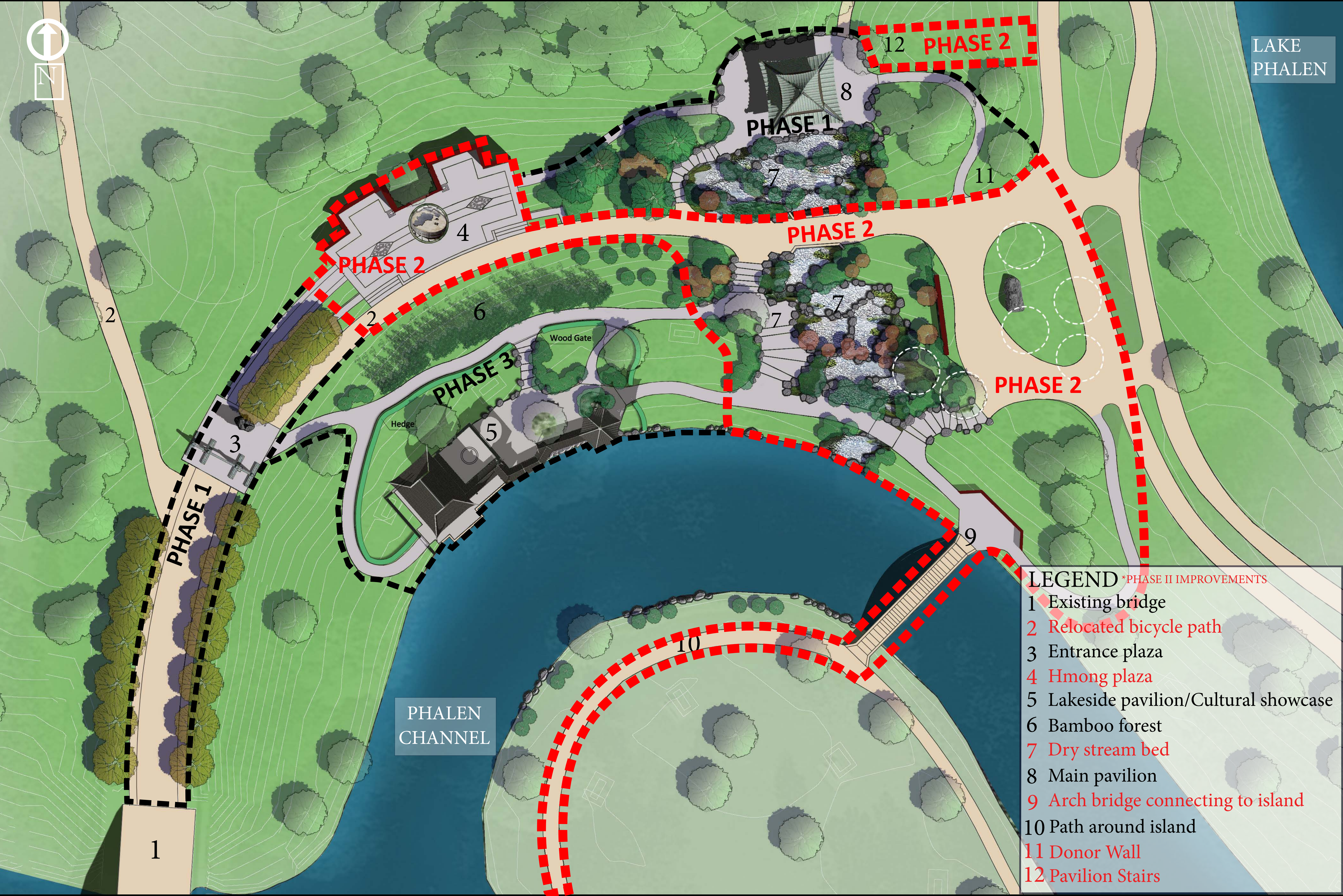


HMONG HERITAGE WALL AT THE PAVILION



2019 GRAND OPENING

PHASE II IMPROVEMENTS

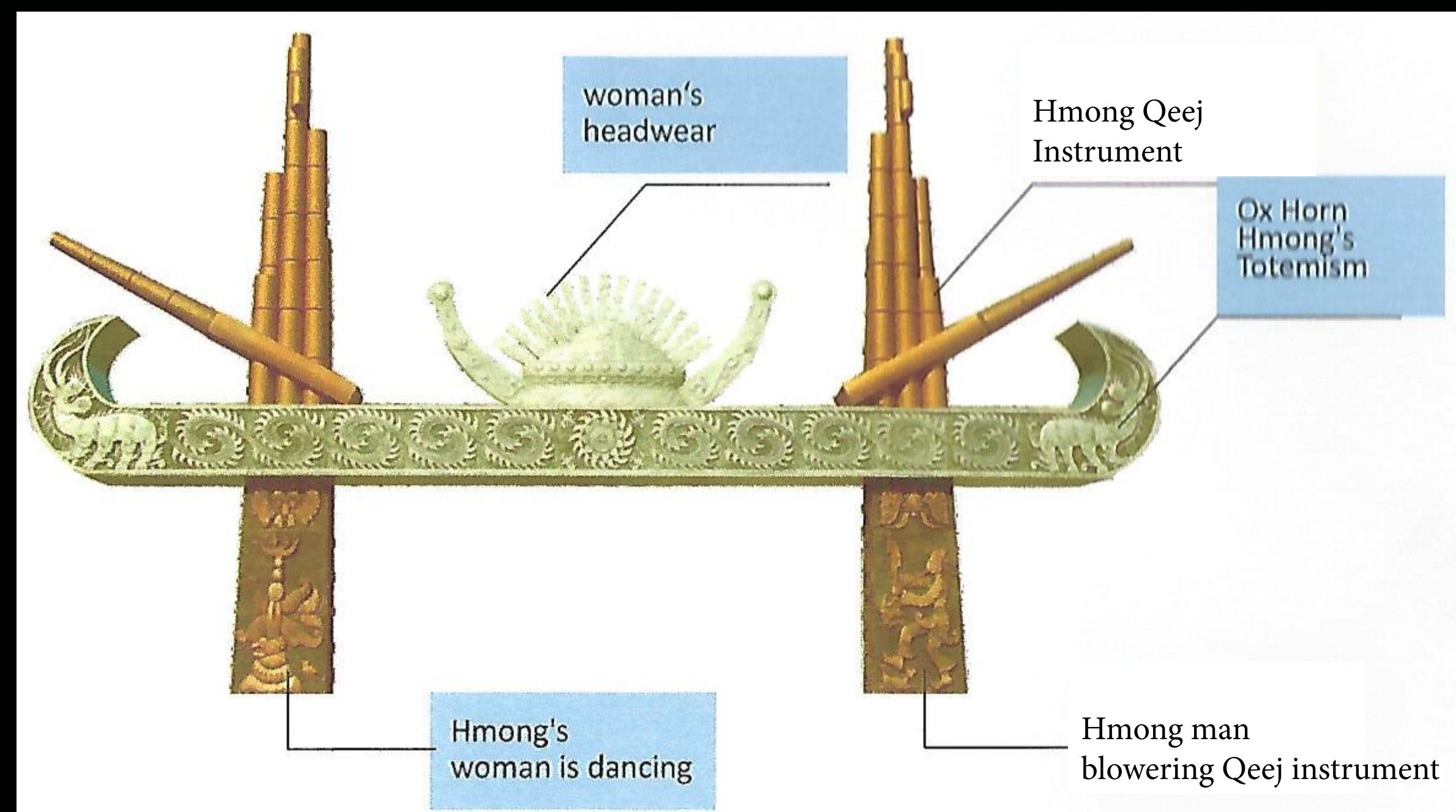


PHASE II

FUNDING:
PARKS AND TRAIL LEGACY & STATE BONDING

PROJECT GOALS:
COMMUNITY ENGAGEMENT
PHASE II DESIGN
PHASE II CONSTRUCTION DOCUMENTS
COST ESTIMATING TO LAUNCH CAPITAL CAMPAIGN
CONSTRUCTION OF HMONG PLAZA
CONSTRUCTION OF PAVILION LANDSCAPE TO PHALEN CHANNEL

HELP DESIGN THE FUTURE HMONG PLAZA!



Hmong Plaza potential design features



Conceptual design of the Hmong Plaza

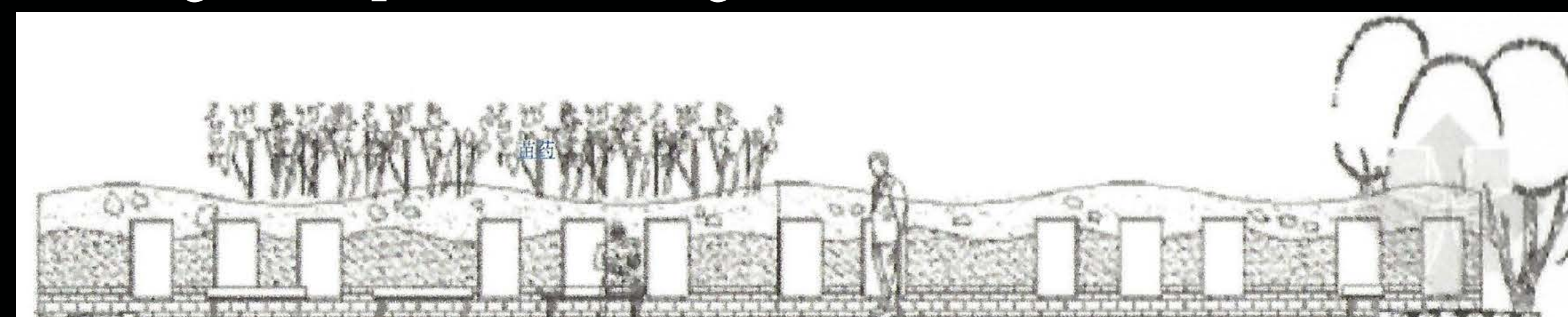


Hmong's Bass drum

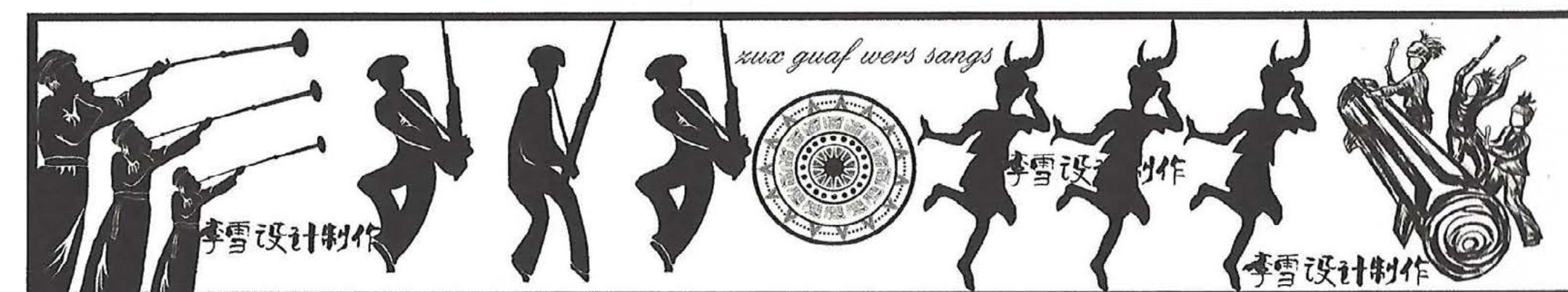


Hmong's embroider

Hmong Plaza potential design features



This record wall introduce the Hmong 's migration paths, the ethnic totemism,the ancestor worship,ethnic music and medicine culture.Sculpture the words on the granite boards.



Hmong Wall design features



Potential Hmong Patterns

HELP DESIGN THE FUTURE MOON BRIDGE!

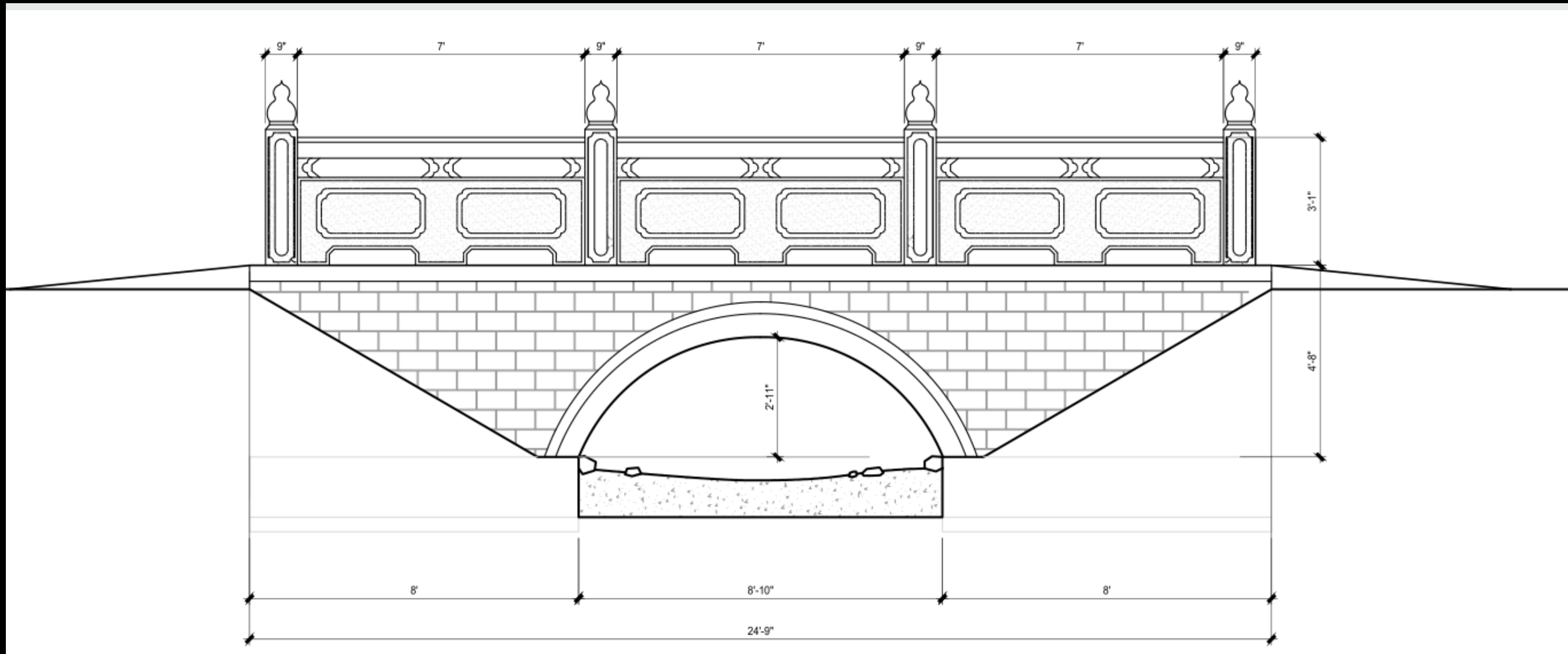


Chinese moon bridge examples

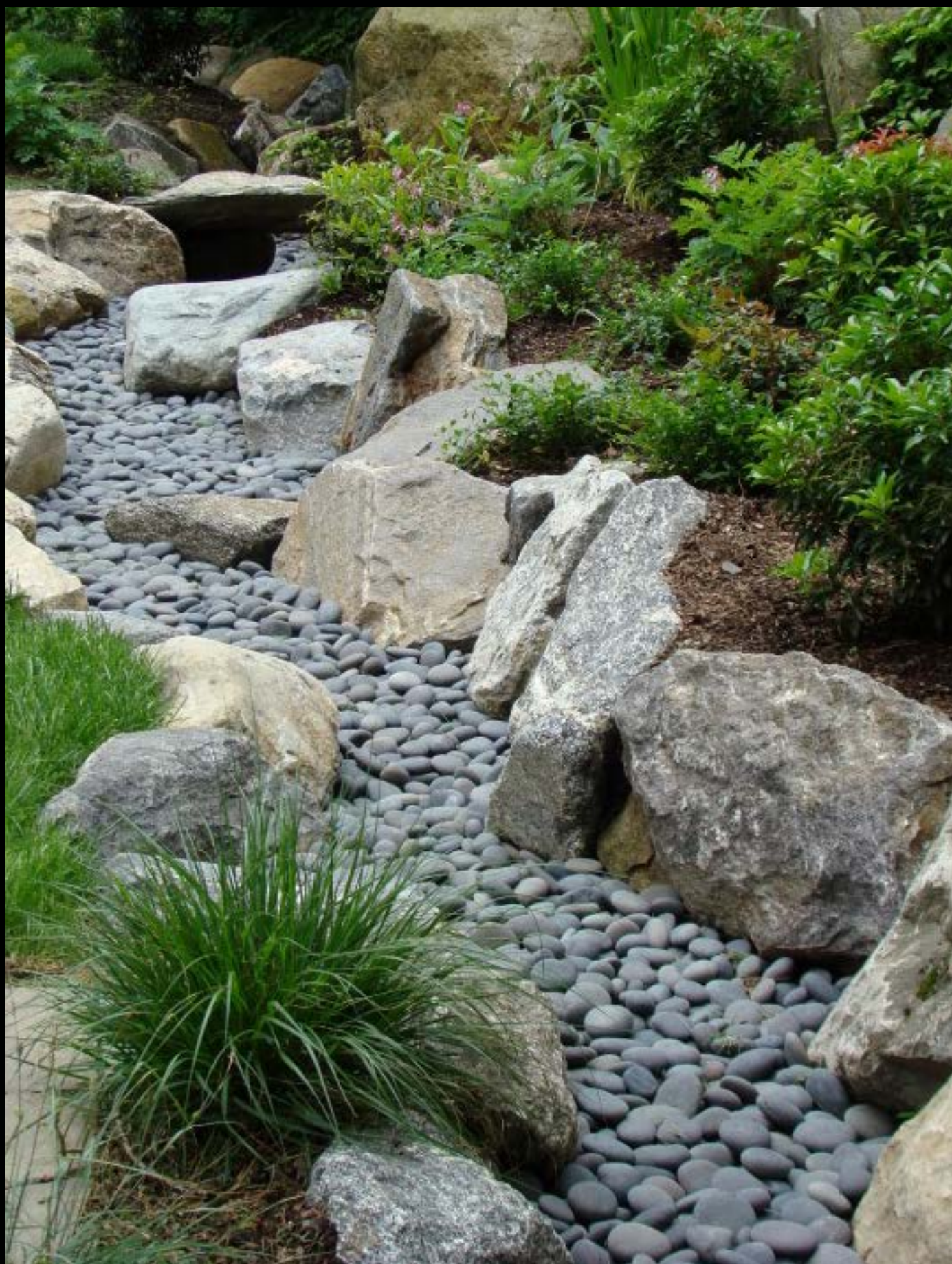
HELP DESIGN THE FUTURE FRONT YARD!



Example of front yard plantings



Potential design of Chinese flat bridge



Dry stream bed examples

HELP DESIGN THE FUTURE DONOR WALL!



Conceptual design of donor wall - looking west



Conceptual design of donor wall - looking south

NEXT STEPS



- Preliminary Design
DAC #1: 10/18
- **Schematic Design**
DAC #2: 10/26 (Virtual?)
DAC #3: 11/3 (Virtual?)
Public Mtg #1: TBD 2022
- Final Design
DAC #4: TBD
Public Mtg #1: TBD 2022

- Construction Docs
- Bidding and Award
Hmong Plaza &
Pavilion Landscape

- Construction

PROJECT CONTACT:

Brett Hussong - Brett.hussong@ci.stpaul.mn.us