



**ST. PAUL-CHANGSHA
CHINA FRIENDSHIP GARDEN
SISTER-CITIES SINCE 1988**

**PHALEN REGIONAL PARK
ST. PAUL - CHANGSHA CHINA FRIENDSHIP GARDEN**

NOVEMBER 2021



MN CHINA FRIENDSHIP
GARDEN SOCIETY



HUNAN JIANKE
LANDSCAPE CO. LTD.



PAUL PARKS AND RECREATION
DESIGN AND CONSTRUCTION

MEETING AGENDA

6:30 INTRODUCTIONS

**6:35 DESIGN ADVISORY COMMITTEE ROLE
CITY DESIGN PROCESS
PROJECT BACKGROUND**

**6:45 MEETING GOALS
HMONG PLAZA ORIGINAL DESIGN INTENT
HMONG PLAZA PURPOSE - RESPONSES
POTENTIAL LOCATION
DESIGN ELEMENTS**

7:00 DISCUSSION

**7:45 NEXT STEPS
DONOR WALL**

MEETING TIPS

- PLEASE KEEP YOURSELF ON MUTE WHEN NOT TALKING
- IF YOU HAVE QUESTIONS, PLEASE USE THE CHAT
- MEETING RECORDING, ATTENDEES LIST, AND CHAT CONTENT WILL SEND THROUGH NOTES



ROLE OF DESIGN ADVISORY COMMITTEE (DAC)

1. Advisory role to Parks and Recreation
2. Input balanced with larger citywide needs, Parks and Rec Systems & Vision Plan
3. Committee members are representing larger interest group. City website will become central source of information allowing committee members to network and share information.
4. Decisions by consensus, not voting
5. Work respectfully in group setting
6. Understand and balance needs of all park users
7. Join Committee with open-mind and willingness to listen and hear views or ideas

DESIGN ADVISORY ROLE

1. Attend at least 6 (virtual) meetings from October 2021 to January 2022.
2. Help guide the design and layout for Phase II elements:

Patterns	Colors	Location
Forms	Materials	
Space	Cultural Stories	
3. Provide plan review for public meetings materials

TENTATIVE SCHEDULE

Phase II Dedication	September 2021
Pre-Design/Kickoff	October 2021
Schematic Design	November 2021
Design Development	December 2021
30% Construction Docs	January 2022
60% Construction Docs	February 2022
90% Construction Docs	March 2022
Bidding	April 2022
Construction	Summer 2022

*Hmong Plaza

*Pavilion Landscape

SYSTEM PLAN VISION

OUR GOALS

Helping make Saint Paul the most Livable City in America by facilitating the creation of ...



ACTIVE LIFESTYLES



VIBRANT PLACES



A VITAL ENVIRONMENT

through parks and recreation that...



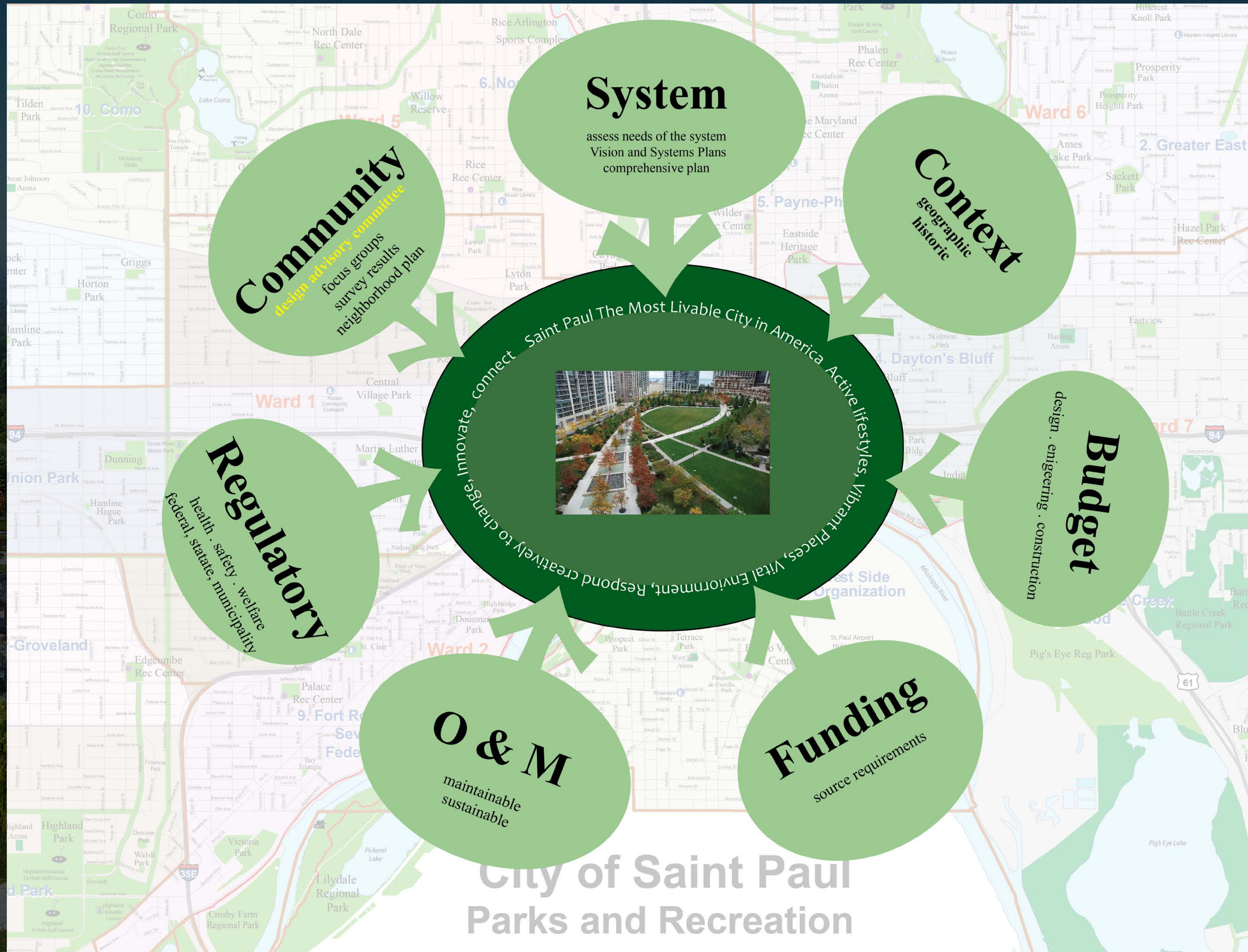
RESPONDS CREATIVELY TO CHANGE



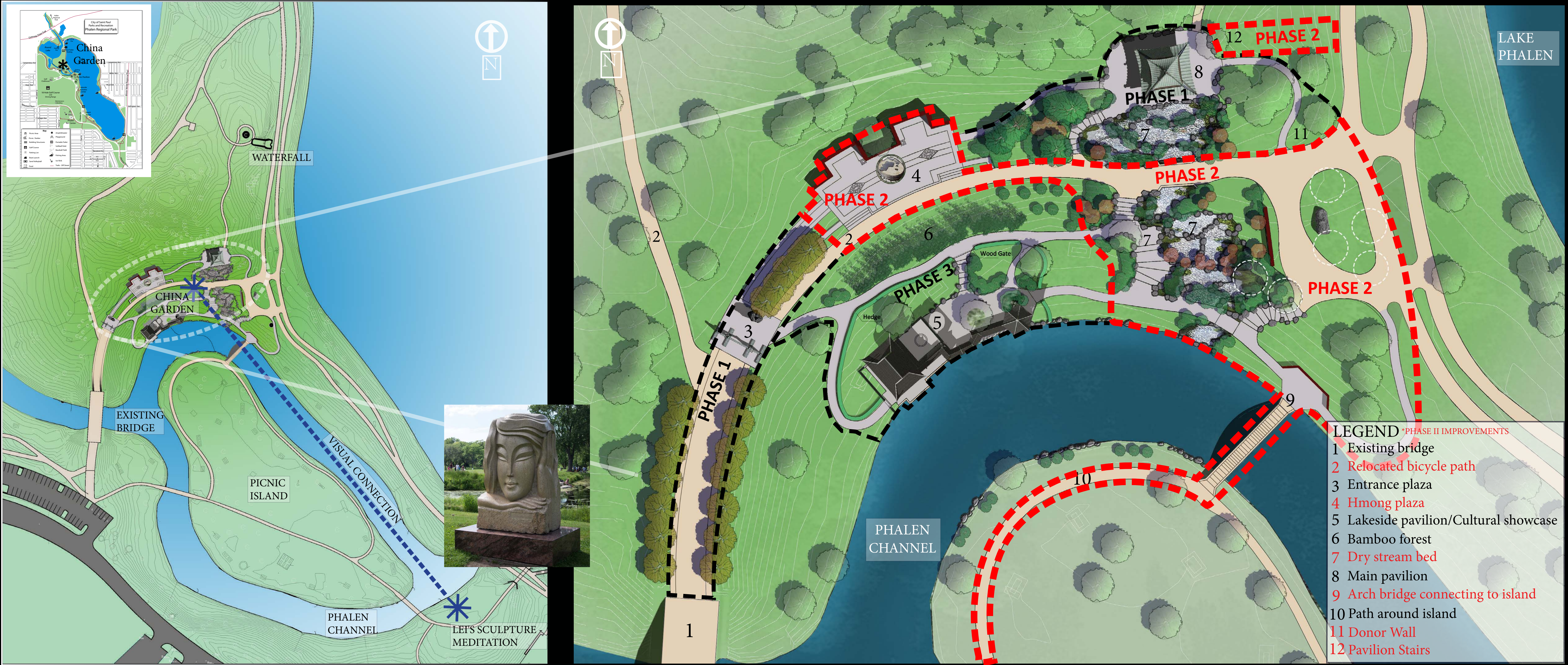
INNOVATES WITH EVERY DECISION



CONNECTS THE ENTIRE CITY



GARDEN LOCATION AND DESIGN ORGANIZATION



PHASE II FUNDING:
ARTS AND CULTURAL HERITAGE FUND LEGACY & STATE BONDING

PHASE II PROJECT GOALS:
COMMUNITY ENGAGEMENT
PHASE II DESIGN
PHASE II CONSTRUCTION DOCUMENTS
COST ESTIMATING TO LAUNCH CAPITAL CAMPAIGN
CONSTRUCTION OF HMONG PLAZA
CONSTRUCTION OF PAVILION LANDSCAPE TO PHALEN CHANNEL

MEETING PURPOSE:
1. RECOMMEND SIZE OF HMONG PLAZA
2. RECOMMEND LOCATION OF HMONG PLAZA
3. RECOMMEND SYMBOLS/PATTERNS

***FUTURE SITE LAYOUT WILL BE COMPLETED BY ARTIST(S), LANDSCAPE ARCHITECTS, AND ENGINEERS FOR REVIEW BY ADVISORY COMMITTEE**

BIRD'S EYE VIEW OF GARDEN - VIEW TO THE NORTH (2017)



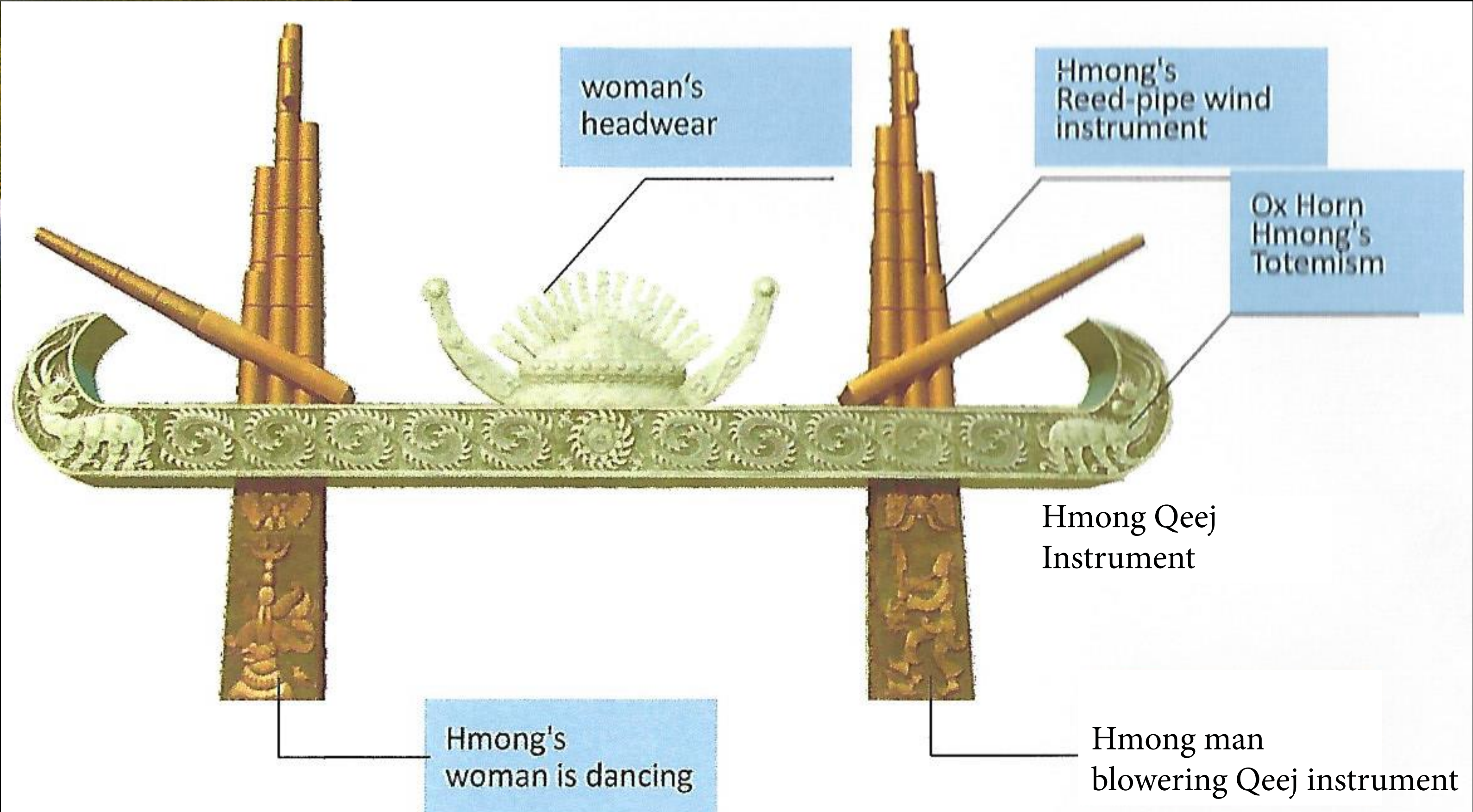
The five elements of Chinese Garden design (vegetation, artistic rocks, water, scenic pathways, and architecture)

HMONG PLAZA - ORIGINAL DESIGN SKETCHES (2017)



ORIGINAL DESIGN OF HMONG PLAZA:

CAPACITY 50 PEOPLE
INTIMATE SPACE
IN HARMONY WITH OTHER GARDEN ELEMENTS
DISPLAY HMONG ARTS AND HERITAGE
CULTURAL BRIDGE AND STRENGTHEN FRIENDSHIPS



HMONG PLAZA ORIGINAL DESIGN FEATURES

HMONG PLAZA PROGRAMMING - DESIGN ADVISORY RESPONSES

WHAT IS THE PURPOSE OF THE SPACE?

CELEBRATION, EDUCATION, MEDITATION, TAI CHI, QI GONG, YOGA
CULTURAL BRIDGE AND STRENGTHEN FRIENDSHIPS
DISPLAY HMONG ARTS AND HERITAGE
HMONG CONTRIBUTION TO ST PAUL
PEACE AND TRANQUILITY

CAPACITY DESIRED

200 PEOPLE OR 3,500 SF (15 SF/PERSON)

WHERE SHOULD THE HMONG PLAZA BE LOCATED?

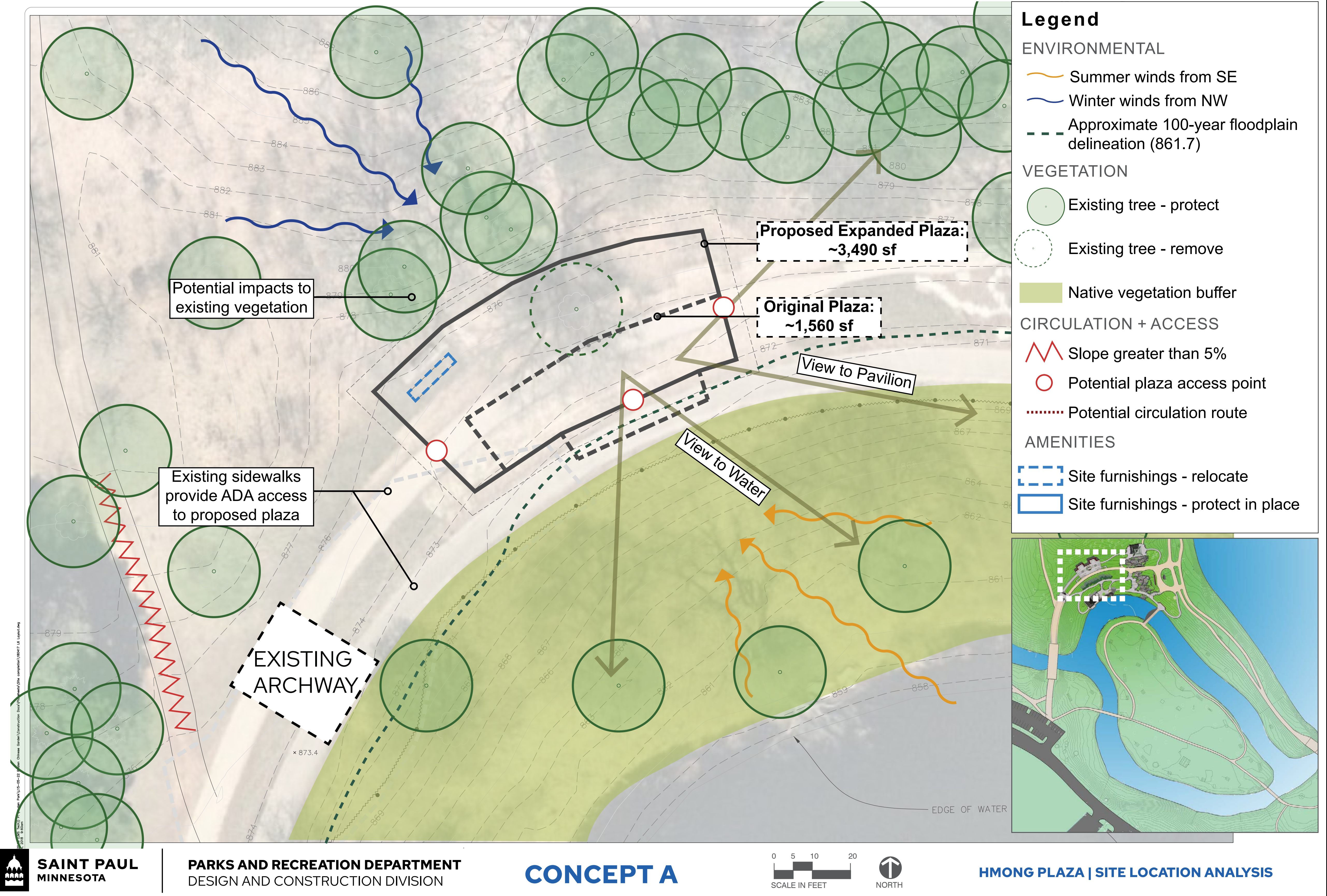
CHINA GARDEN SITE
SITE OF BLESSING CEREMONY
ONLY IF 50 PERSON PLAZA
ALTERNATE SITES
CHANNEL PARKING LOT
PICNIC ISLAND
AMPHITHEATER
OTHER?

HMONG PLAZA LOCATION - CONCEPT A - CHINA GARDEN

ANALYSIS:

PROS:
RETAINS VIEW TO ISLAND
50 PERSON: 1,500 SF
WITHIN GARDEN BOUNDARY

CONS:
VEGETATION IMPACTS
RETAINING WALL NEEDED
ADVISORY COMMITTEE
WOULD NOT SUPPORT 200 PEOPLE



HMONG PLAZA LOCATION - CONCEPT A - CHINA GARDEN



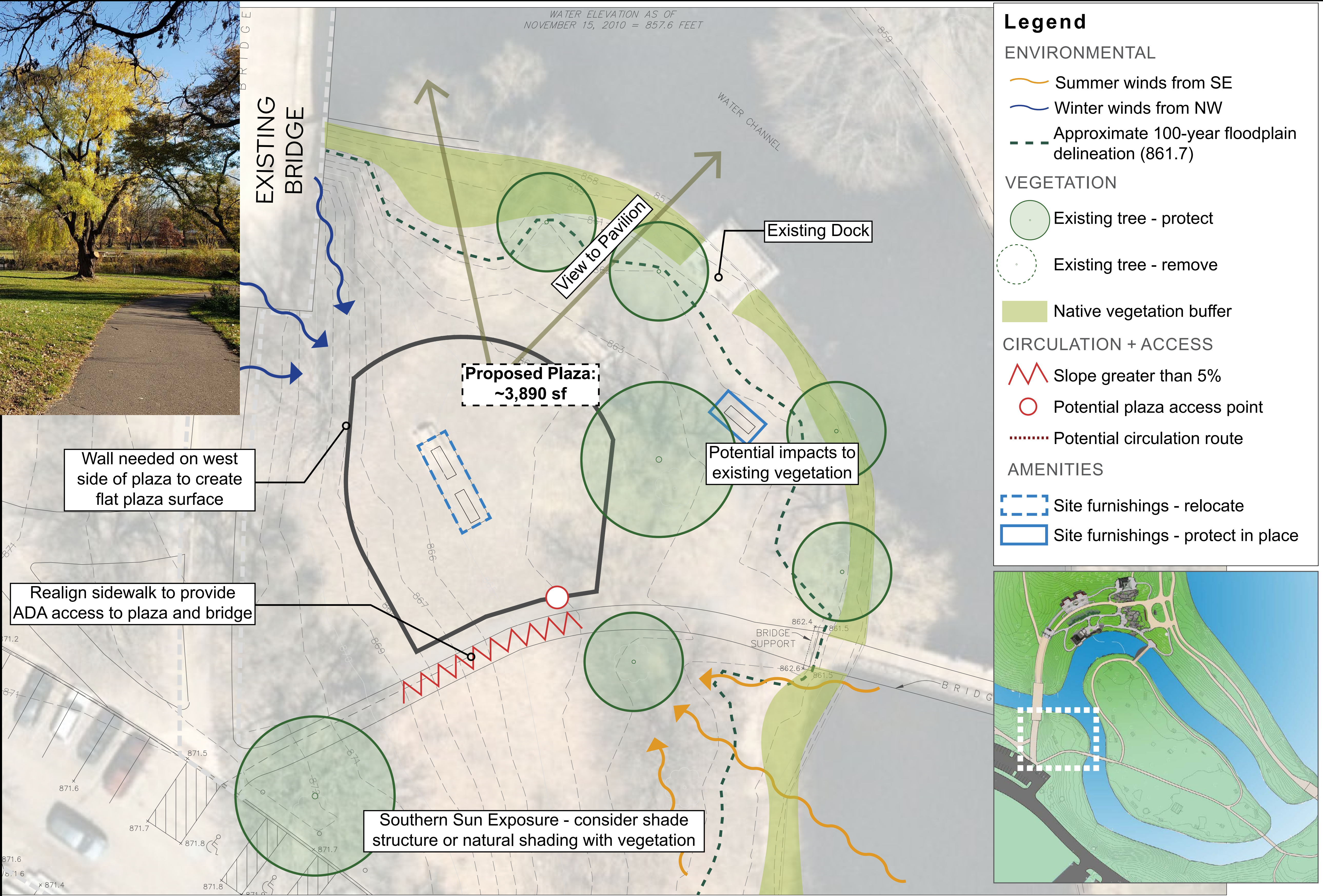
HMONG PLAZA LOCATION - CONCEPT B - CHANNEL PARKING LOT



ANALYSIS:

PROS:
200 PERSON: 3,500 SF
VIEW TO PAVILION/MOON
BRIDGE
NEAR PARKING LOT
ADJACENT TO PATHS

CONS:
SOME VEGETATION IMPACTS
ADA ACCESS NEEDED
RETAINING WALL NEEDED



ST PAUL
SOTA

PARKS AND RECREATION DEPARTMENT
DESIGN AND CONSTRUCTION DIVISION

CONCEPT B

0 5 10 20
SCALE IN FEET

NORTH

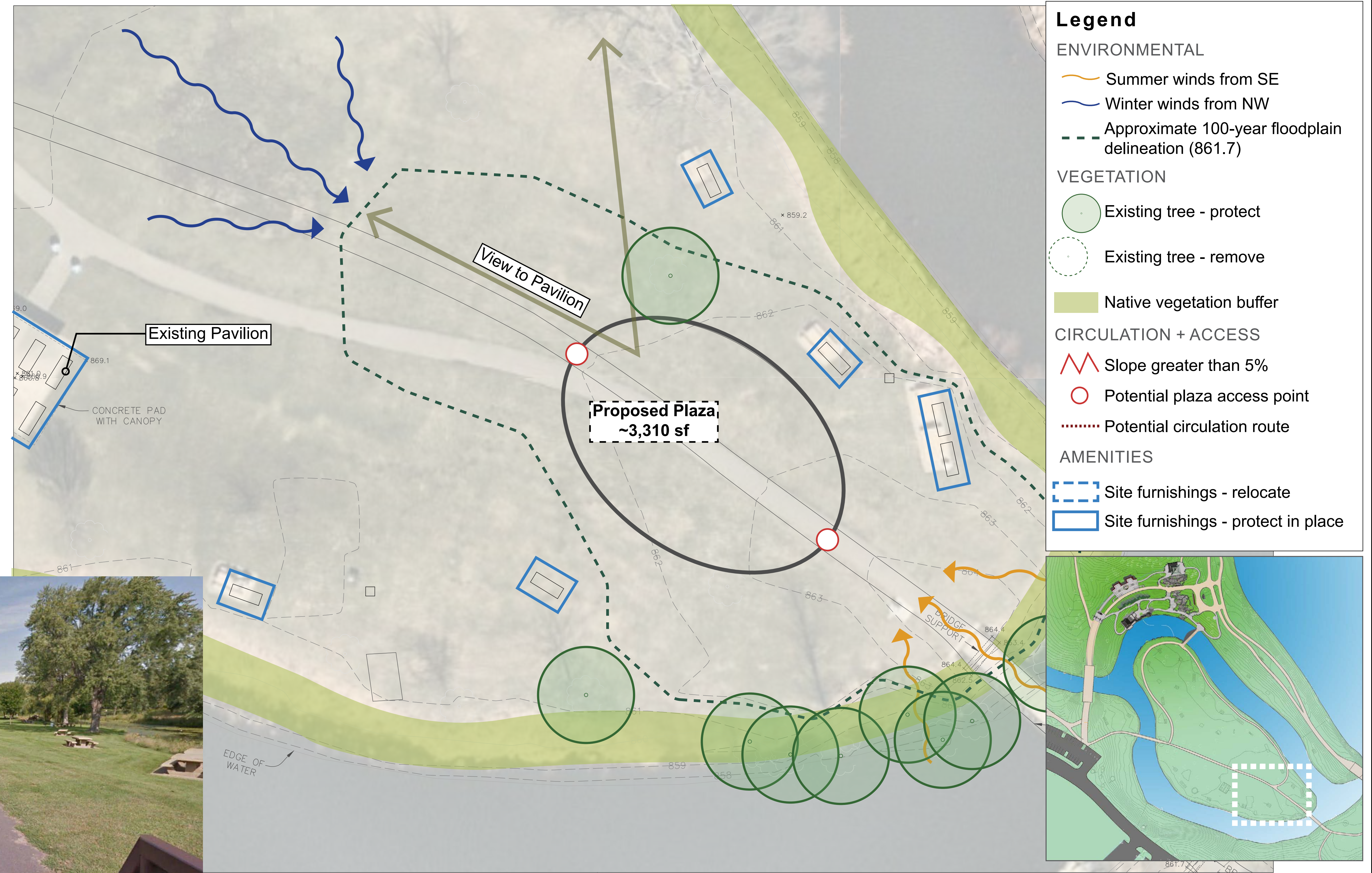
HMONG PLAZA | SITE LOCATION ANALYSIS

HMONG PLAZA LOCATION - CONCEPT C - ISLAND

ANALYSIS:

PROS:
200 PERSON: 3,500 SF
VIEW TO PAVILION/MOON
BRIDGE
NEAR DRINKING FOUNTAIN

CONS:
ADA ACCESS NEEDED
ADJACENT TO PATH
REMOTE LOCATION
DIFFICULT CONSTRUCTION
NEAR FLOODPLAIN
COMPETE WITH PICNIC
PAVILION EVENTS



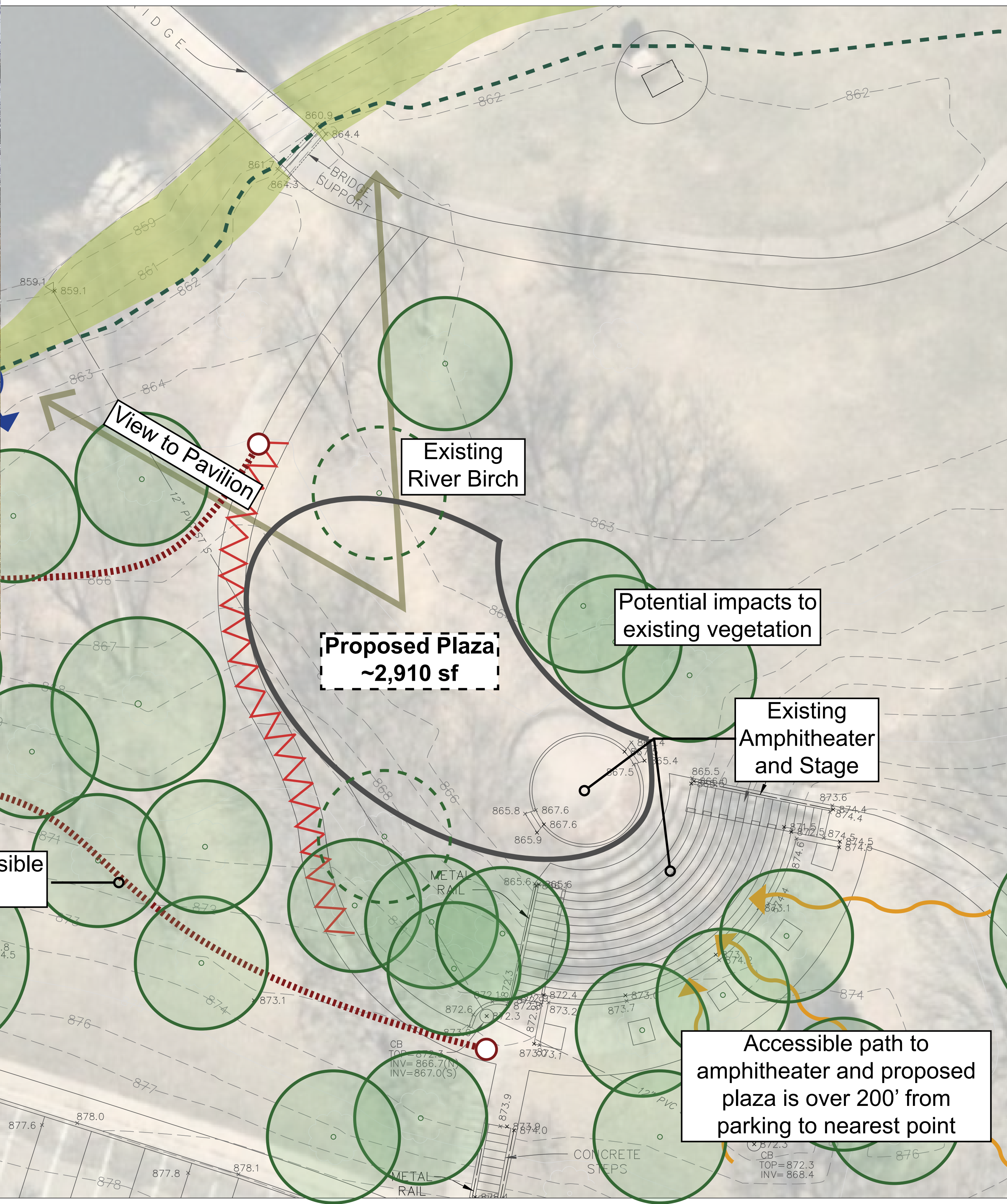
PARKS AND RECREATION DEPARTMENT
DESIGN AND CONSTRUCTION DIVISION

CONCEPT C



HMONG PLAZA | SITE LOCATION ANALYSIS

HMONG PLAZA LOCATION - CONCEPT D - AMPHITHEATER



Legend

ENVIRONMENTAL

- Summer winds from SE
- Winter winds from NW
- Approximate 100-year floodplain delineation (861.7)

VEGETATION

- Existing tree - protect
- Existing tree - remove
- Native vegetation buffer

CIRCULATION + ACCESS

- Slope greater than 5%
- Potential plaza access point
- Potential circulation route

AMENITIES

- Site furnishings - relocate
- Site furnishings - protect in place



ANALYSIS:

PROS:
200 PERSON: 3,500 SF
EXISTING
INFRASTRUCTURE
NEAR PARKING LOT

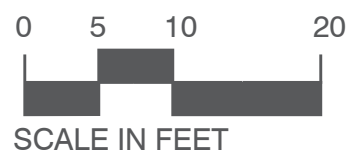
CONS:
ADA ACCESS NEEDED
COMPETE WITH PICNIC
PAVILION EVENTS
VEGETATION REMOVAL



SAINT PAUL
MINNESOTA

PARKS AND RECREATION DEPARTMENT
DESIGN AND CONSTRUCTION DIVISION

CONCEPT D



HMONG PLAZA | SITE LOCATION ANALYSIS



QUESTIONS

IS THERE DISCUSSION OR A PREFERRED ALTERNATIVE?

IF SO, CAN A NEW BLESSING CEREMONY OCCUR AT THAT SITE?

WHAT REPLACES HMONG PLAZA?
DONOR WALL?
FRAMED VIEW WALL?



HMONG PLAZA ELEMENTS

SUPPORTING FEATURES?

STAGE (RAISED OR SUNK)

PODIUM/PRESENTATION AREA

ROOF/CANOPY

SEATING

WILL SEATING BE BUILDING INTO PLAZA OR MOVEABLE?

STADIUM SEATING

SEATING WALLS AROUND EDGE

FOLDING CHAIRS (STORAGE DIFFICULT ONSITE)

SYMBOLS/PATTERNS

HMONG CHINESE HAT

QEEJ INSTRUMENT

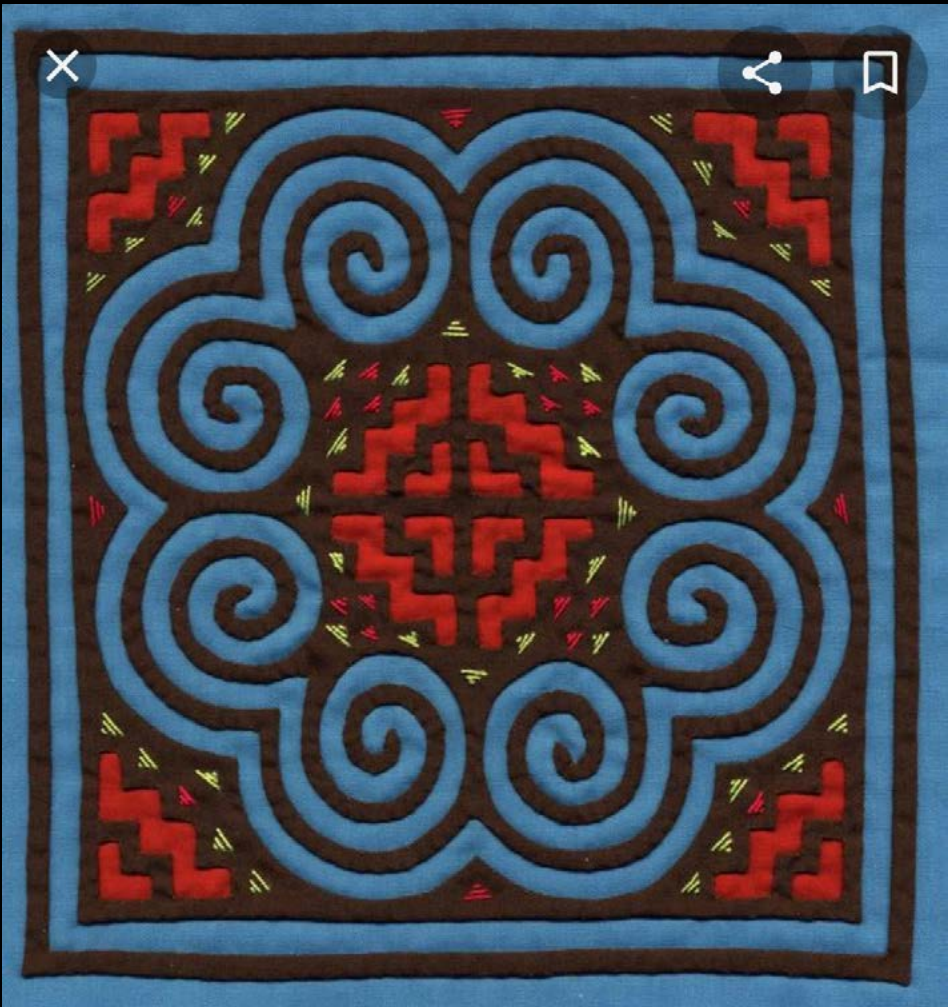
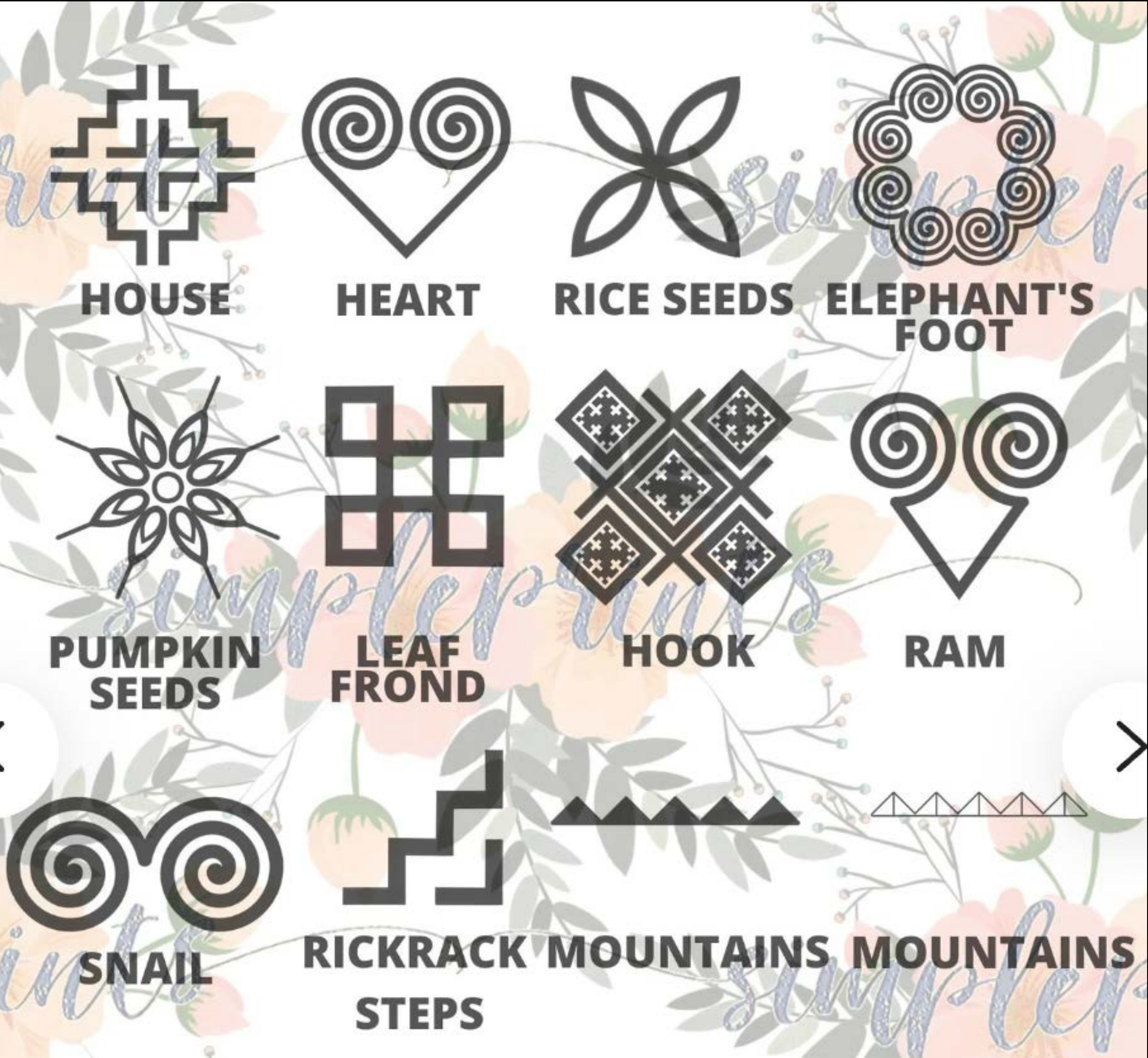
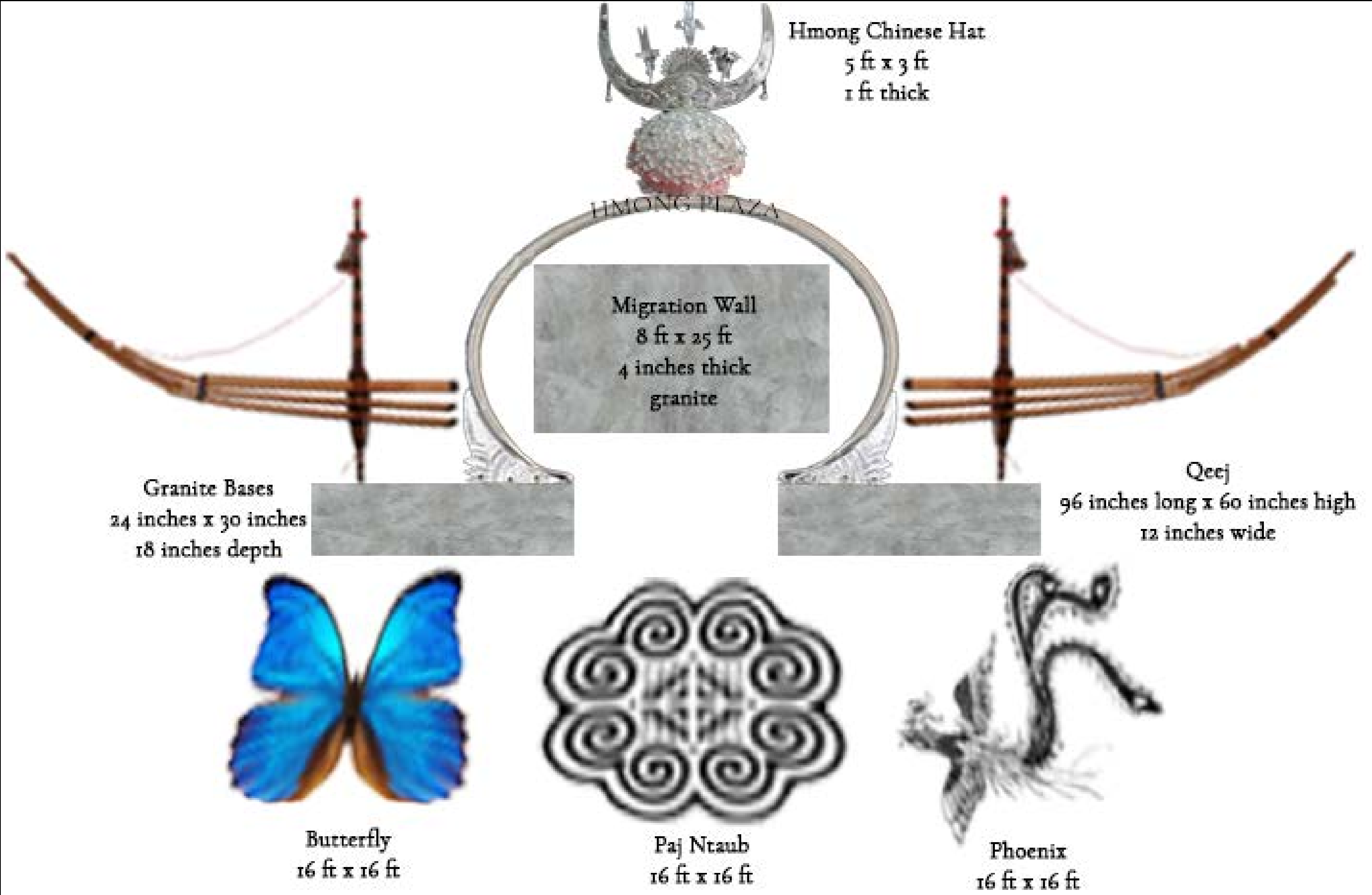
BUTTERFLY

PAJ NTAUB

PHOENIX

ELEPHANT'S FOOT

HMONG PLAZA SYMBOLS/PATTERN SUGGESTIONS



HMONG EMBROIDER PATTERNS

HMONG BASS DRUM

NEXT STEPS



- Preliminary Design
 - DAC #1: 10/18
 - DAC #2: 11/10
 - DAC #3: 11/17 (Virtual)**
 - DAC #4: 11/30 (Virtual)
- Schematic Design
 - DAC #5: TBD
 - Public Mtg #1: TBD 2022
- Design Development
 - DAC #6: TBD
 - Public Mtg #1: TBD 2022

- Construction Docs
- Bidding and Award Hmong Plaza & Pavilion Landscape

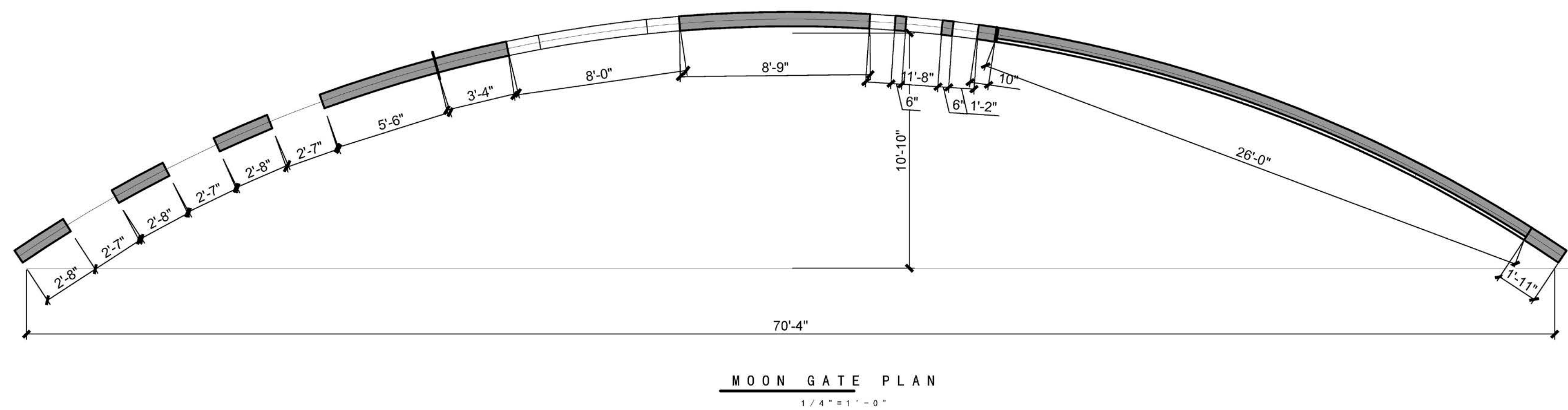
- Construction

PROJECT CONTACT: Brett.hussong@ci.stpaul.mn.us
PROJECT WEBSITE: www.stpaul.gov/phalenchinagarden

THANK YOU!



DONOR WALL - ORIGINAL DESIGN (2017)



CONCEPT B



CONCEPT A

DONOR WALL - DESIGN ADVISORY RESPONSES

WHAT IS THE PURPOSE OF THE SPACE?

- PERMANENT RECOGNITION SPACE (EXPANDABLE)
- INCLUDES MOON GATE
- CONSIDER INCLUDING INTERPRETIVE/EDUCATIONAL INFORMATION
- WHITE WALLS AND TILE FOR CONTINUITY WITH PAVILION

CAPACITY OF NAMES

- XXX NUMBER OF DONORS

WHERE SHOULD THE MOON GATE BE LOCATED?

- EAST SIDE ENTRANCE
- FRAME VIEW OF MOON BRIDGE TOWARD ISLAND
- FRAME VIEW OF WEST ARCHWAY/LAKESIDE PAVILION

DONOR WALL LOCATION

