



**ST. PAUL-CHANGSHA  
CHINA FRIENDSHIP GARDEN  
SISTER-CITIES SINCE 1988  
DAC MEETING #3 - NOV 17, 2021**

**PHALEN REGIONAL PARK  
ST. PAUL - CHANGSHA CHINA FRIENDSHIP GARDEN**

NOVEMBER 2021



MN CHINA FRIENDSHIP  
GARDEN SOCIETY



HUNAN JIANKE  
LANDSCAPE CO. LTD.



PAUL PARKS AND RECREATION  
DESIGN AND CONSTRUCTION



# DAC #3 MEETING AGENDA

**6:30 INTRODUCTIONS**

**6:35 DESIGN ADVISORY COMMITTEE ROLE  
CITY DESIGN PROCESS  
PROJECT BACKGROUND/ DAC #2 RECAP  
EXISTING LOCATION  
SITE ANALYSIS  
DESIGN EXAMPLES  
PROGRAMMING QUESTIONS**

**6:45 DISCUSSION**

**7:45 NEXT STEPS  
PAVILION LANDSCAPE**

## MEETING TIPS

- PLEASE KEEP YOURSELF ON MUTE WHEN NOT TALKING
- IF YOU HAVE QUESTIONS, PLEASE USE THE CHAT
- MEETING RECORDING, ATTENDEES LIST, AND CHAT CONTENT WILL BE SENT THROUGH NOTES







## ROLE OF DESIGN ADVISORY COMMITTEE (DAC)

1. Advisory role to Parks and Recreation
2. Input balanced with larger citywide needs, Parks and Rec Systems & Vision Plan
3. Committee members are representing larger interest group. City website will become central source of information allowing committee members to network and share information.
4. Decisions by consensus, not voting
5. Work respectfully in group setting
6. Understand and balance needs of all park users
7. Join Committee with open-mind and willingness to listen and hear views or ideas
8. Attend at least 6 (virtual) meetings from October 2021 to January 2022.
9. Help guide the design and layout for Phase II elements:
 






|          |                  |          |
|----------|------------------|----------|
| Patterns | Colors           | Location |
| Forms    | Materials        |          |
| Space    | Cultural Stories |          |
10. Provide plan review of concepts for public meetings materials

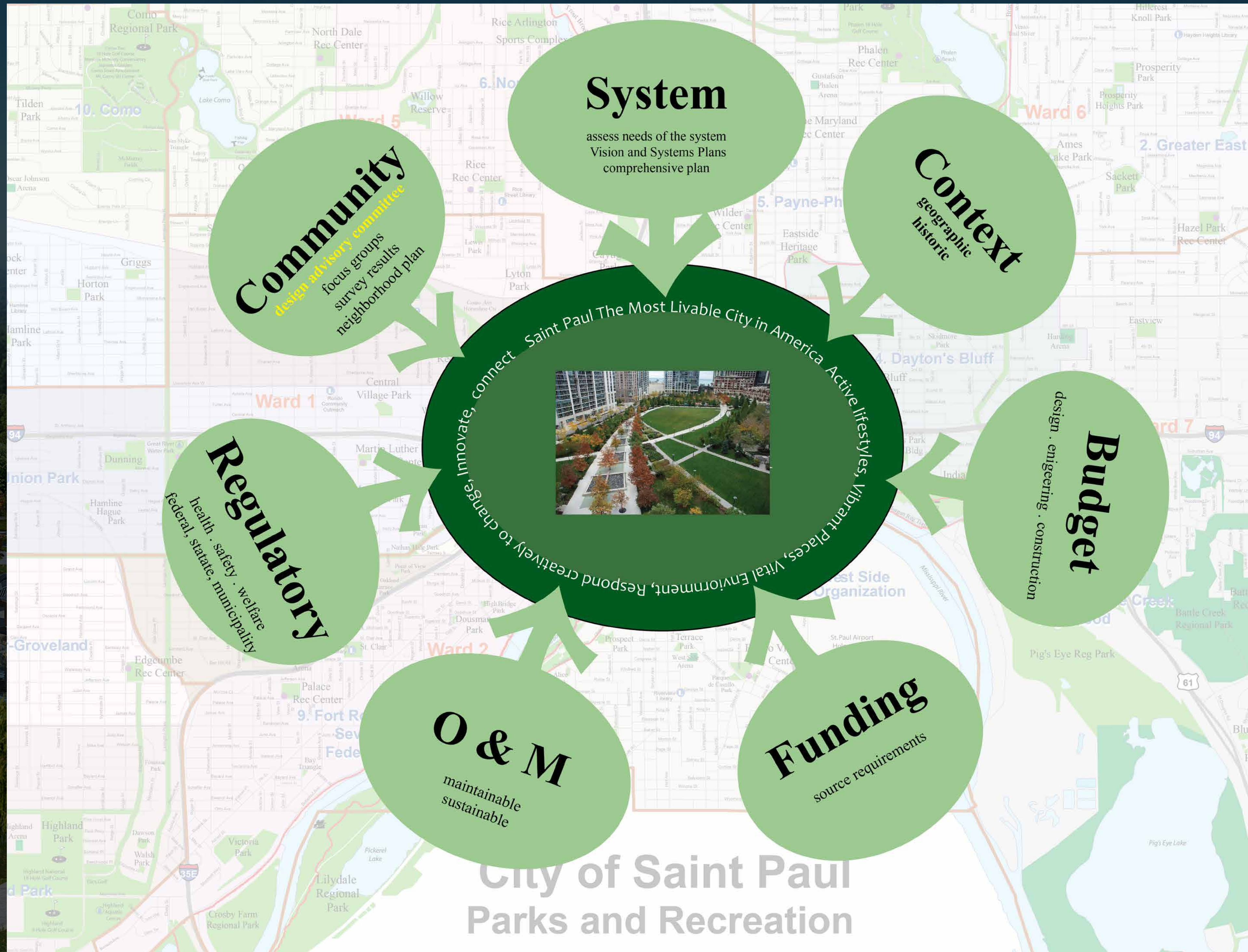


# SYSTEM PLAN VISION

Helping make Saint Paul the most Livable City in America by facilitating the creation of ...

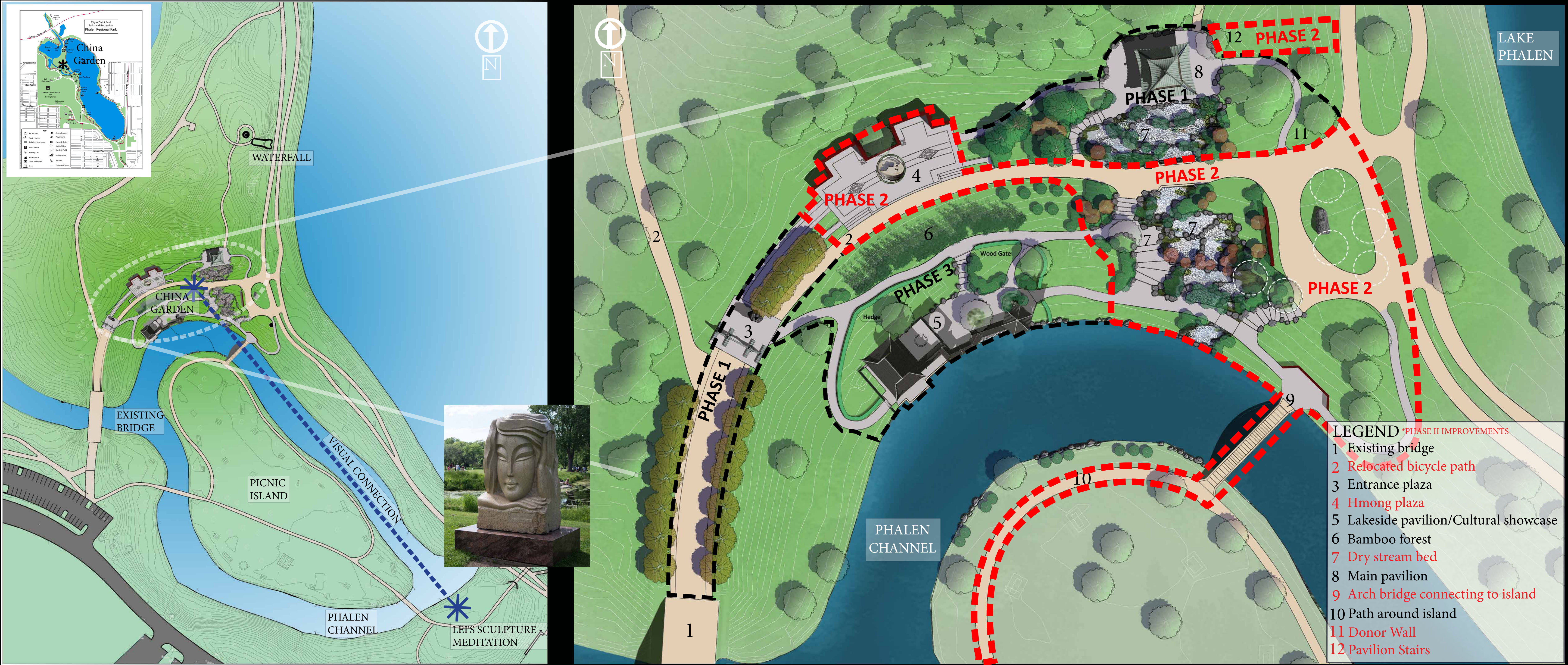
OUR GOALS

-  **ACTIVE LIFESTYLES**
  -  **VIBRANT PLACES**
  -  **A VITAL ENVIRONMENT**
- through parks and recreation that...
-  **RESPONDS CREATIVELY TO CHANGE**
  -  **INNOVATES WITH EVERY DECISION**
  -  **CONNECTS THE ENTIRE CITY**





# GARDEN LOCATION AND DESIGN ORGANIZATION



**PHASE II FUNDING:**  
**ARTS AND CULTURAL HERITAGE FUND LEGACY & STATE BONDING**

**PHASE II PROJECT GOALS:**  
**COMMUNITY ENGAGEMENT**  
**PHASE II DESIGN**  
**PHASE II CONSTRUCTION DOCUMENTS**  
**COST ESTIMATING TO LAUNCH CAPITAL CAMPAIGN**  
**CONSTRUCTION OF HMONG PLAZA**  
**CONSTRUCTION OF PAVILION LANDSCAPE TO PHALEN CHANNEL**

**MEETING PURPOSE:**  
**1. REVIEW LOCATION OF DONOR WALL AND MOON BRIDGE**  
**2. REVIEW FORM, FUNCTION, MATERIALS AND CHARACTERISTICS**

**\*FUTURE SITE LAYOUT WILL BE COMPLETED BY ARTIST(S), LANDSCAPE ARCHITECTS, AND ENGINEERS FOR REVIEW BY ADVISORY COMMITTEE**



# DESIGN ADVISORY MEETING #2 RECAP

## THE PURPOSE OF THE HMONG PLAZA:

- CELEBRATION, EDUCATION, MEDITATION, RECREATION (TAI CHI, QUI GONG, YOGA)
- A CULTURAL BRIDGE AND STRENGTHEN FRIENDSHIPS
- DISPLAY HMONG ARTS AND HERITAGE
- HMONG CONTRIBUTION TO ST. PAUL
- PEACE AND TRANQUILITY

## WHAT WE HEARD:

- IT IS TOO LATE TO MOVE THE PLAZA BECAUSE OF THE FENG SHUI BLESSING AND SITE DEDICATION
- AN ALTERNATE LOCATION WOULD BE OUTSIDE OF GARDEN - WOULD NOT PROMOTE FRIENDSHIP
- CURRENT LOCATION WOULD NOT SUPPORT 200-PERSON PLAZA - ALTERNATE SITE IS RECOMMENDED.
- 200-PERSON PLAZA WOULD NOT BE IN HARMONY WITH AN INTIMATE GARDEN

## NEXT STEPS:

- NO DECISION HAS BEEN MADE.
- PARKS AND RECREATION IS GUIDING THE DISCUSSION AND PROMOTING A TRANSPARENT PROCESS.
- PARKS AND RECREATION WILL REACH OUT TO DESIGN TEAM (CITY, ARTISTS, CHANGSHA CHINA DESIGNERS)
- A MEETING WILL BE SCHEDULED IN THE NEAR FUTURE TO CONTINUE DISCUSSION



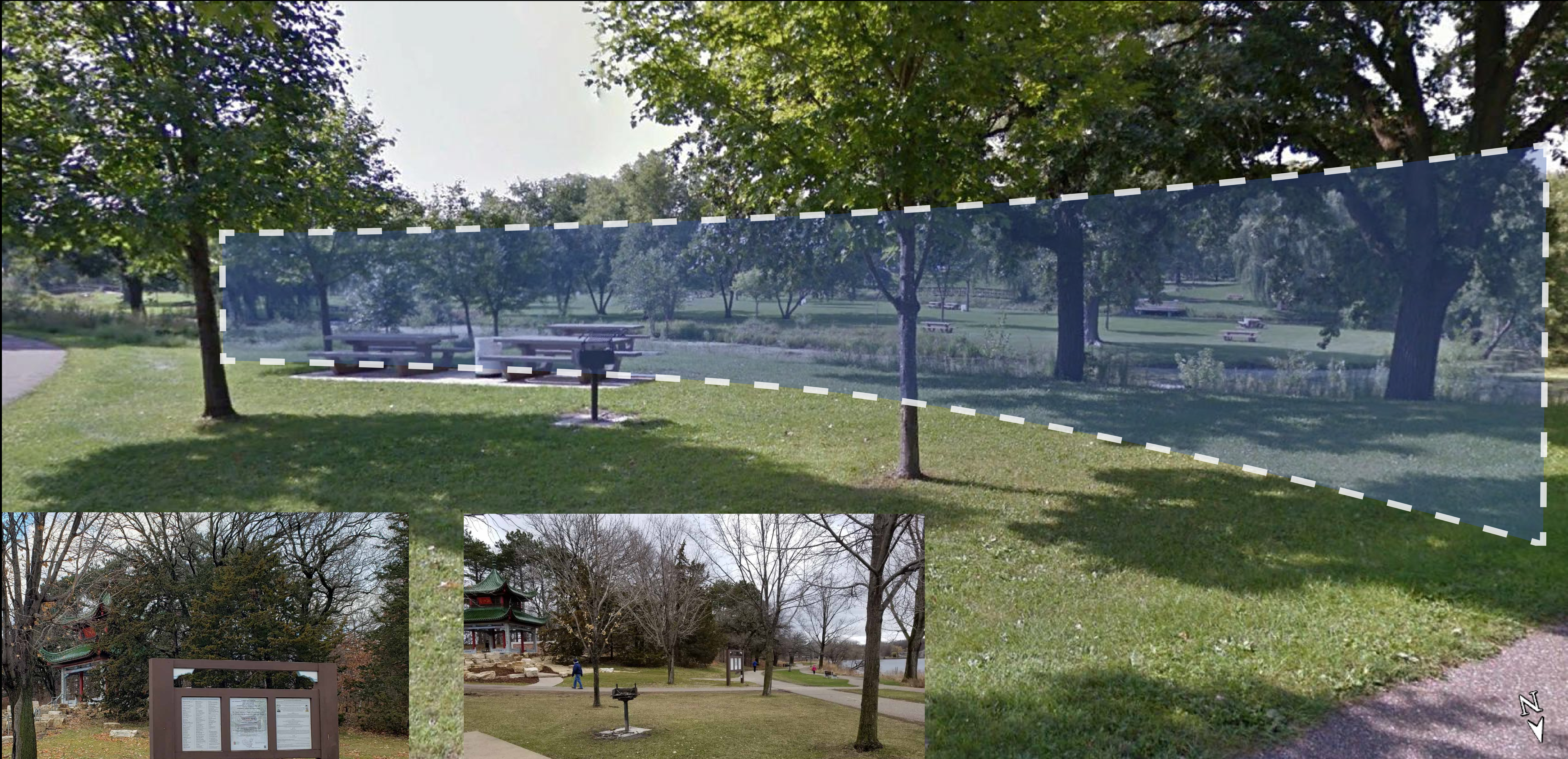
# BIRD'S EYE VIEW OF GARDEN - VIEW TO THE NORTH (2017)



The five elements of Chinese Garden design (vegetation, artistic rocks, water, scenic pathways, and architecture)



# DONOR WALL - EXISTING SITE



EXISTING SITE LOCATION LOOKING SOUTH

TEMPORARY DONOR WALL

EXISTING LOCATION LOOKING NORTH



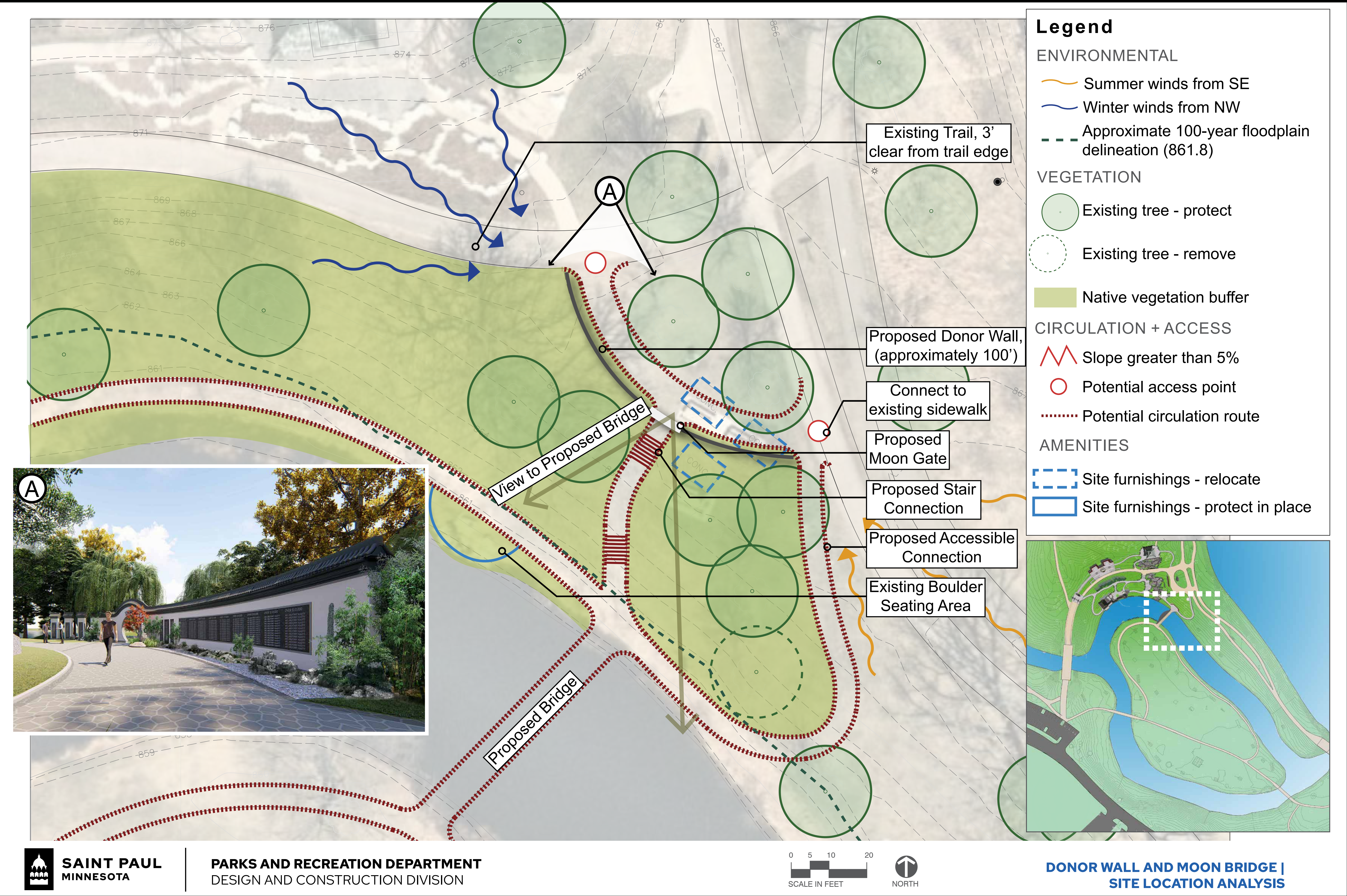
# MOON BRIDGE - EXISTING SITE



EXISTING SITE LOOKING SOUTH



# SITE ANALYSIS - DONOR WALL & MOON BRIDGE





# DONOR WALL - DESIGN SKETCHES (2017 MASTER PLAN)



MOON GATE RENDERING

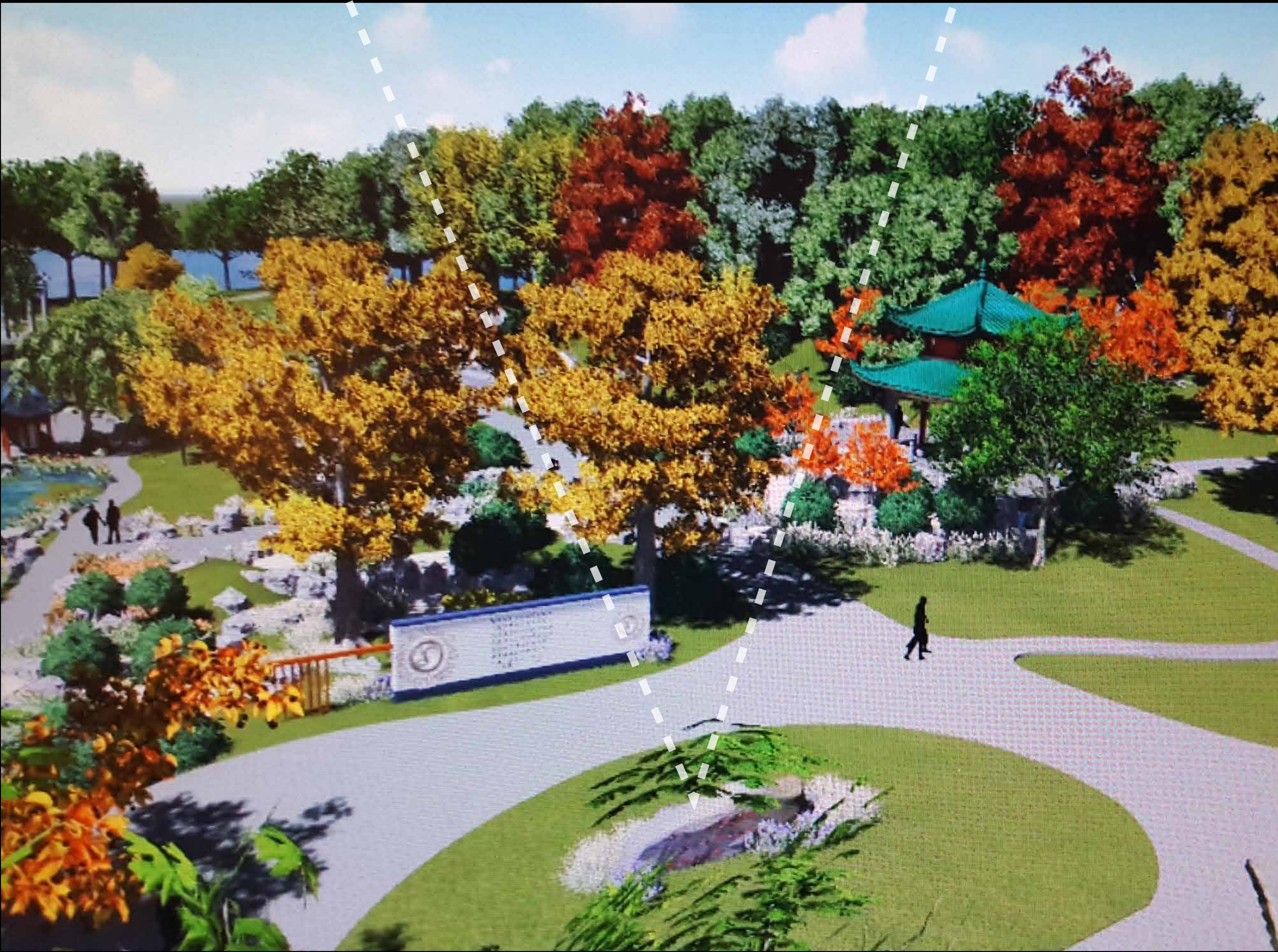
CONCEPT A - MOON GATE WITH CONTINUOUS WALL



CONCEPT B - MOON GATE WITH TRANSPARENT WALL



ALL CONCEPTS  
EAST GATE SIGN



CONCEPT C - NO MOON GATE



# MOON BRIDGE - EXAMPLES



2017 MASTER PLAN



BRIDGE WITH STEPS



ADA ACCESSIBLE BRIDGE



BRIDGE WITH WHITE STONE



# PROGRAMMING QUESTIONS

## DONOR WALL

### WHAT IS THE PURPOSE & DESIGN FOR THE DONOR WALL?

- A PERMANENT DONOR LIST AND SECONDARY GATE INTO GARDEN FROM EAST
- TILE LIKE PAVILION ROOF TILE
- MOON GATE FRAMING BRIDGE
- STUCCO WALLS WITH NAMES ENGRAVED IN WHITE ON BLACK GRANITE DONOR PANELS

### DESIGN QUESTIONS

- PREFER CONTINUOUS WALL, TRANSPARENT OR COMBINATION?
- HOW CAN WE INCORPORATE HMONG SYMBOLS?
- CONTAIN INTERPRETIVE GARDEN INFORMATION?

## MOON BRIDGE

### WHAT IS THE PURPOSE & DESIGN FOR THE DONOR WALL?

- POETIC LANDSCAPE ELEMENT PROVIDING CONNECTION TO PICNIC ISLAND
- FRAME VIEW TOWARD MEDITATION SCULPTURE

### DESIGN QUESTIONS

- SHOULD IT BE ADA ACCESSIBLE?
- WHAT ARE THE SYMBOLIC FEATURES AND HOW TO INCORPORATE HMONG SYMBOLS ON BRIDGE?
- WHAT ARE THE COLORS AND MATERIALS? SHOULD IT STAND OUT OR BLEND IN WITH LANDSCAPE?



# NEXT STEPS



- Preliminary Design  
DAC #1: 10/18  
DAC #2: 11/10  
DAC #3: 11/17 (Virtual)  
**DAC #4: 11/30 (Virtual)**
- Schematic Design  
DAC #5: TBD  
Public Mtg #1: TBD 2022
- Design Development  
DAC #6: TBD  
Public Mtg #1: TBD 2022

- Construction Docs
- Bidding and Award  
Hmong Plaza &  
Pavilion Landscape

- Construction

**PROJECT CONTACT:** [Brett.hussong@ci.stpaul.mn.us](mailto:Brett.hussong@ci.stpaul.mn.us)  
**PROJECT WEBSITE:** [www.stpaul.gov/phalenchinagarden](http://www.stpaul.gov/phalenchinagarden)



THANK YOU!





# PAVILION LANDSCAPE - ORIGINAL DESIGN (2017)



XIANG JIANG PAVILION - 2017 MASTER PLAN



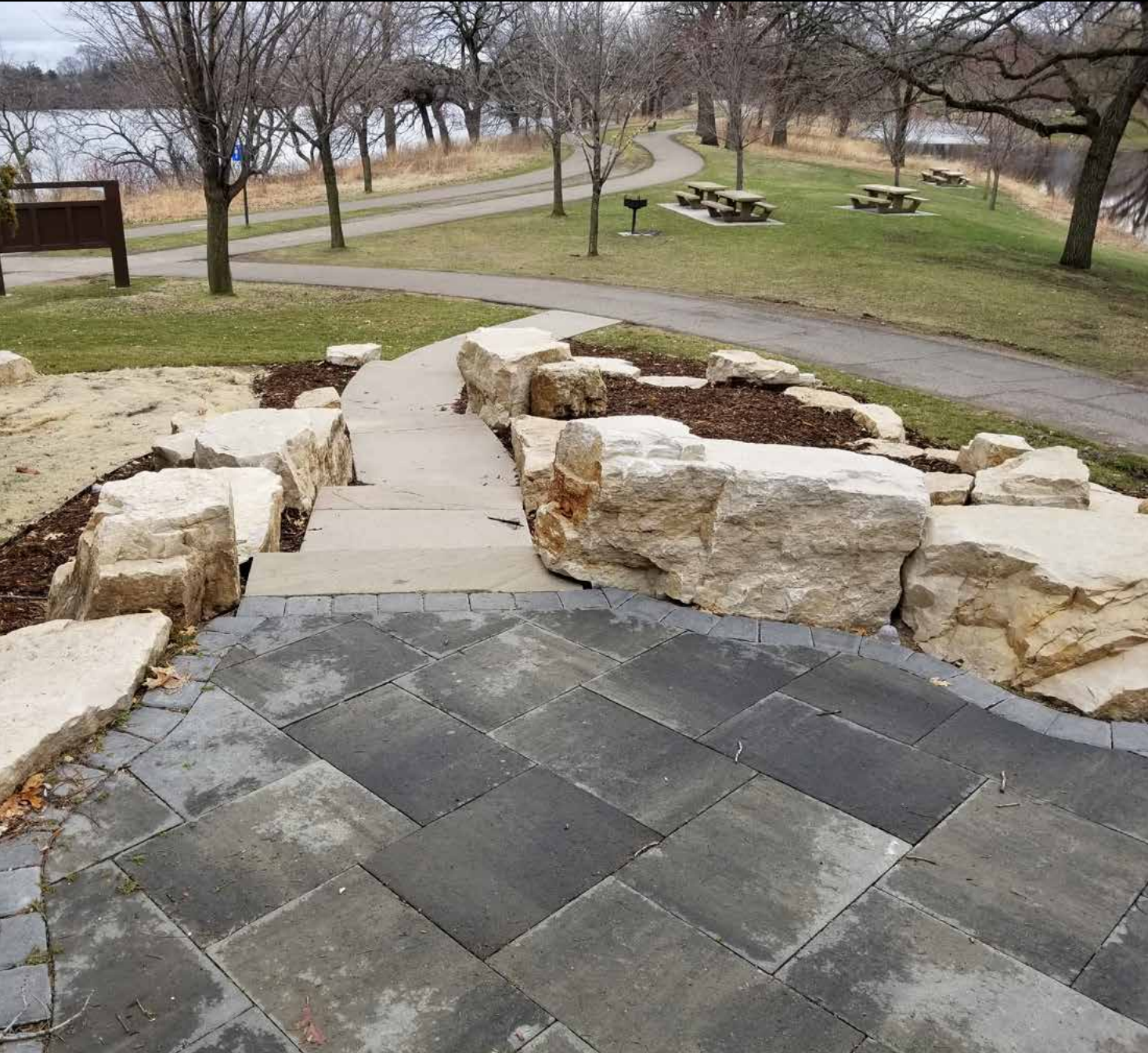
2017 MASTER PLAN



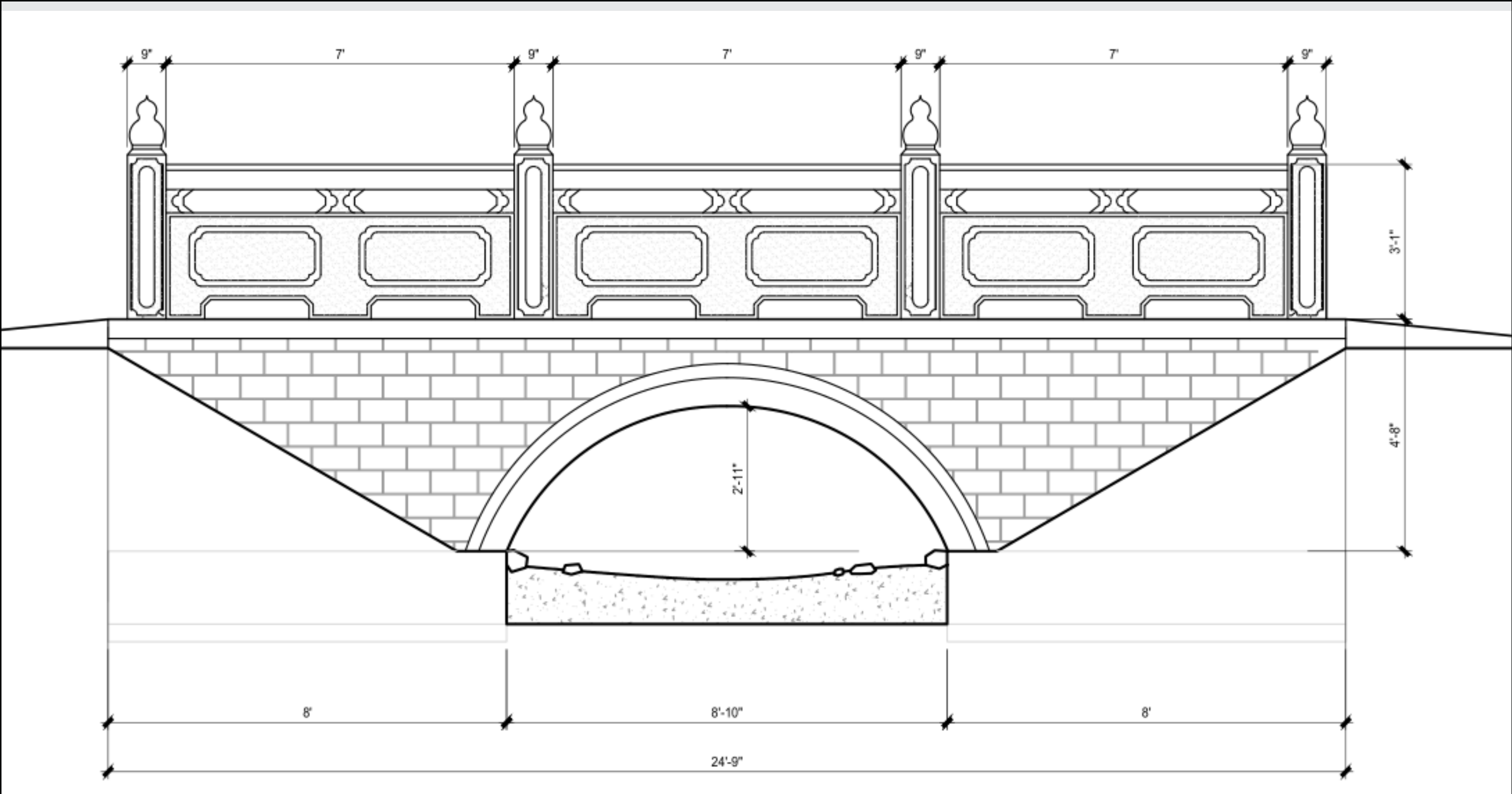
# PAVILION LANDSCAPE - CHARACTERISTICS



EXAMPLE OF  
IRREGULAR STONE  
STAIRS



EXISTING PAVILION STAIRS



BRIDGE - 2017 MASTER PLAN



RIVER ROCK



FLAT OVERLAPPING STONE



UNIFORM ROUND STONES



VERTICAL STONES



PHALEN REGIONAL PARK  
ST. PAUL - CHANGSHA CHINA FRIENDSHIP GARDEN

NOVEMBER 2021



MN CHINA FRIENDSHIP  
GARDEN SOCIETY



HUNAN JIANKE  
LANDSCAPE CO LTD.



SAINT PAUL  
MINNESOTA

PAUL PARKS AND RECREATION  
DESIGN AND CONSTRUCTION