

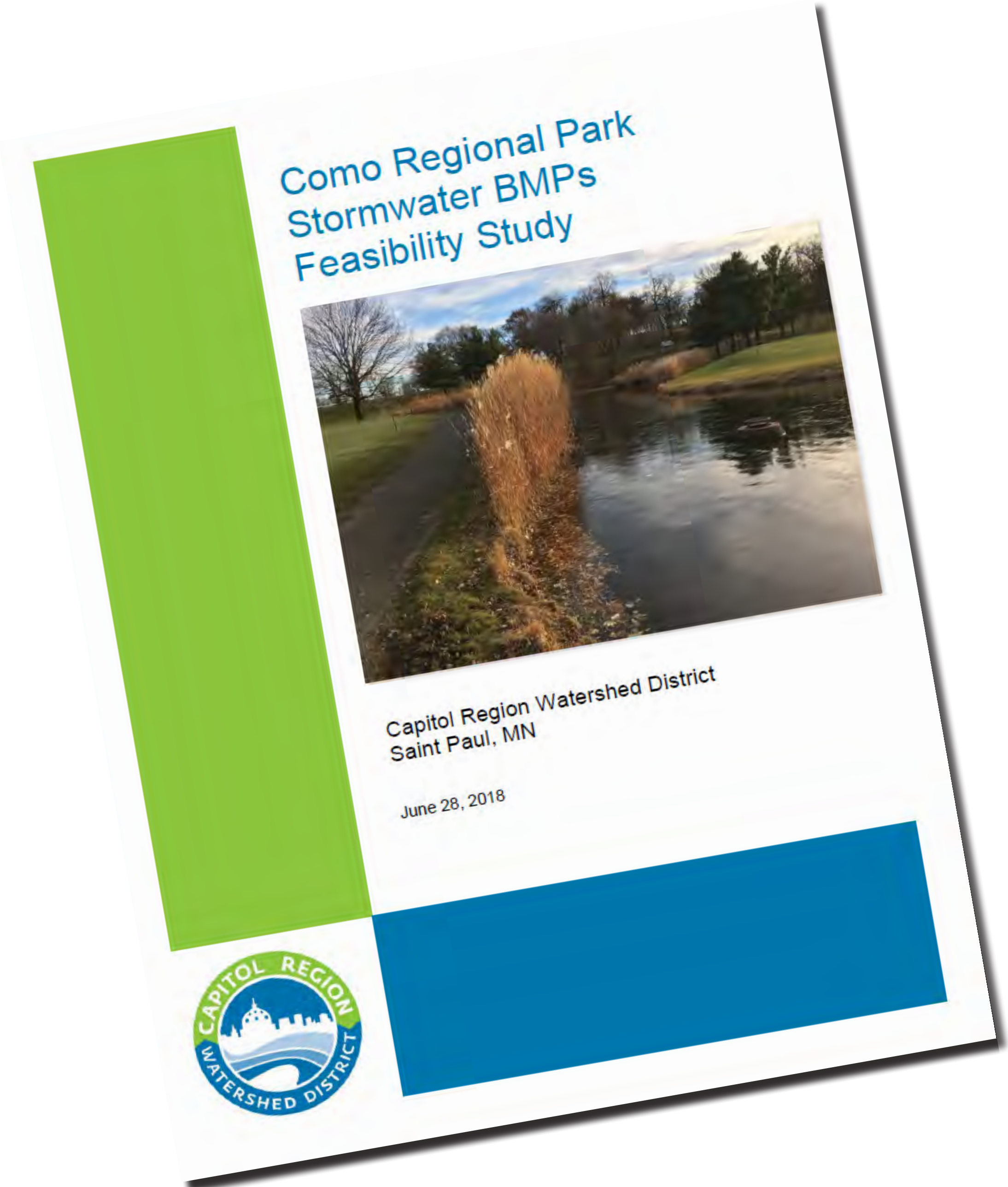
Como Golf Course & Lakeside Pavilion Parking Lots - Transportation committee



Agenda

- Review of Plans and Process
- Next Steps & Discussion
 - + Bidding
 - + Construction

Project Goal: To resurface the parking lots and update stormwater management, bicycle and pedestrian circulation. Design for a sense of arrival and utilize space to full potential.



Como Golf Course Parking Lot

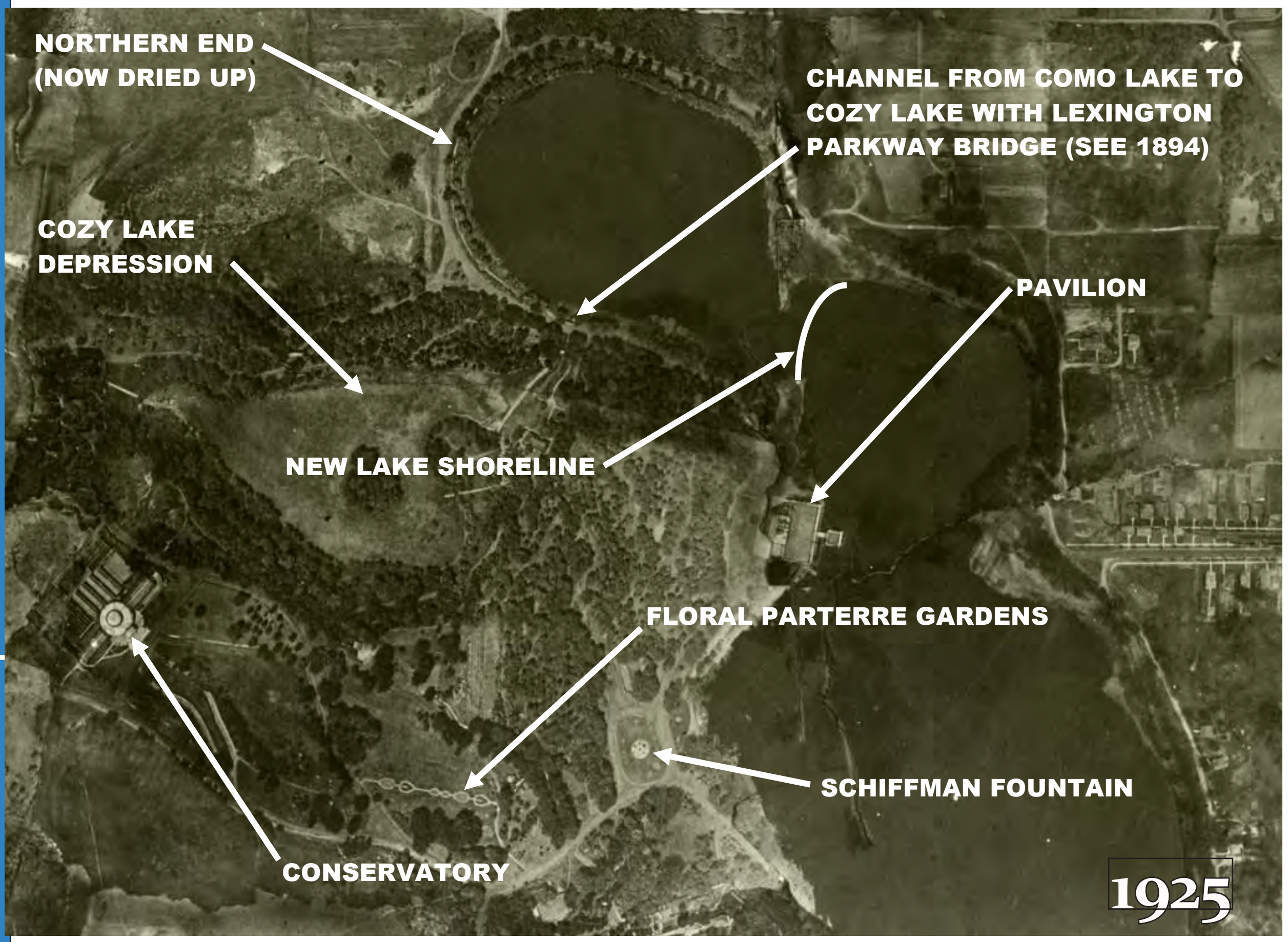


Lakeside Pavilion North Parking Lot

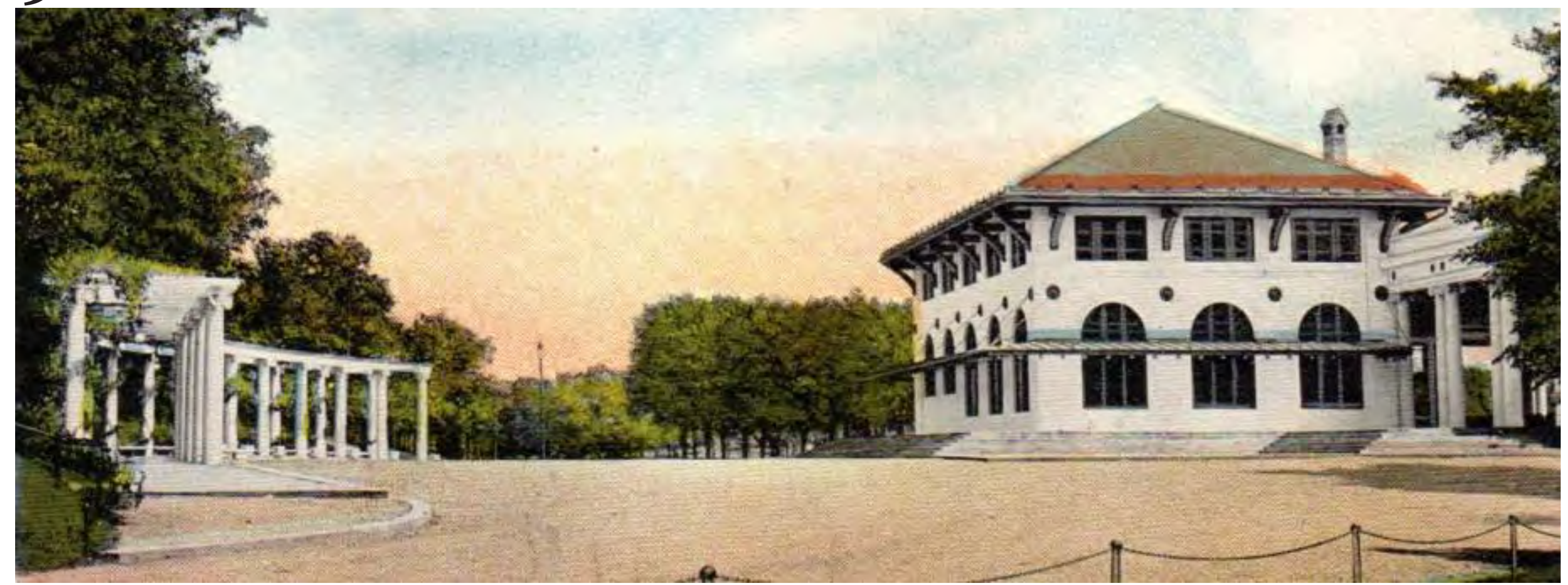


Lakeside Pavilion S Parking Lot

Site Analysis, History and Community Feedback



1906



COMO REGIONAL PARK - PARKING IMPROVEMENTS
 Ward 5 | July 29, 2020
 Project Manager: Anne Gardner, Anne.Gardner@ci.stpaul.mn.us

D10 Report Summary

SIGNAGE
 Suggestions & Requests

- + Campus wide pedestrian wayfinding needed
- + Master Map w/key attractions
- + Request to divide Como Park to five color coded sub-divisions
- + Kiosks at Key Locations
- + Lakeside Pavilion and Golf House Signage
- + Recommendation for icon and color coding
- + Replace trail pedestrian wayfinding & directional signage
- + Striping and arrows on paths

Wayfinding priority to pedestrian bridge over Lexington Pkwy.

TRAILS
 Suggestions & Requests

- + Prioritize trail segments for repave or rebuild
- + Study impacts of Lake Como trail from one to two-way. Consider plowing in winter.
- + Add trail signage & wayfinding
- + Preferred two-way north and south trail between Lakeside Pavilion & crosswalk at Lexington Ave & Como Lake Dr
- + Consider adding north-south trail across Estabrook Dr, west of Lexington
- + Enhance crosswalk safety connections to Grand Round - Maryland/Wheelock (east) & Como/Hamline (west)

AMENITIES
 Parkwide Recommendations

- + Reduce speed limits w/tailed cross-walk at key locations (no specified location)
- + Add site furnishings along trails (bench, trash receptacles, compost at high-use buildings, water fountain-pet fountain, bicycle racks)
- + Trail vegetation maintenance
- + Screening of commercial trash containers
- + Addition of portable restroom facilities in strategic locations, especially for off-season

Como Park Sub-Divisions:

- Como Lake
- Zoo & Conservatory
- Picnic & Event Areas
- Golf Course/Skiing
- Pool/McMurray Field/Woodland
- Outdoor classroom/Audubon Woods

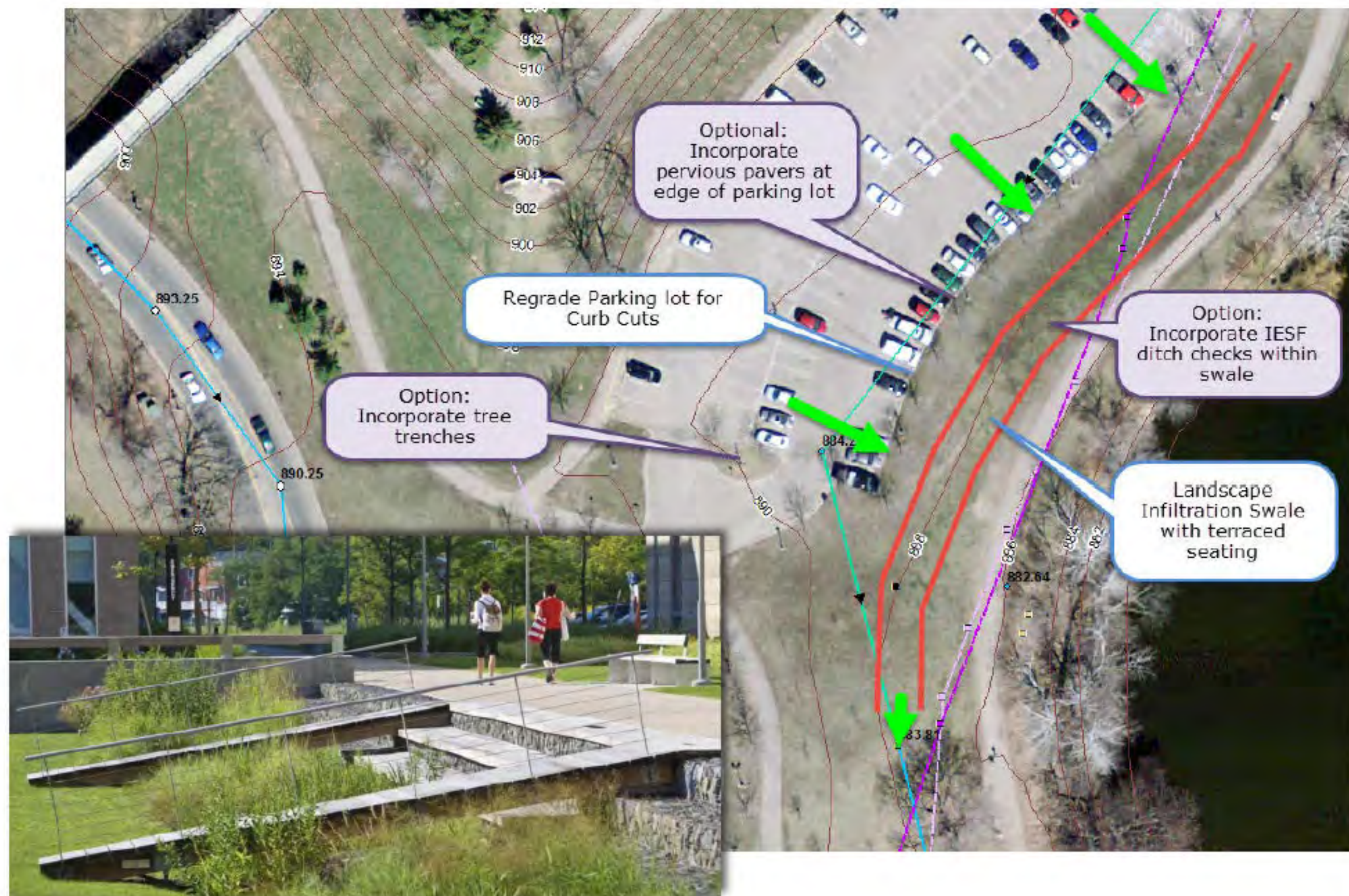
Kiosk Locations:

- Lakeside Pavilion
- Zoo & Conservatory
- Midway Parkway @ Hamline
- East side of lake (Wheelock Pkwy Entrance)
- McMurray Field/Pool
- Como/Horton/Lexington Confluence

Red lines - trails segments that need improvements

Trail segment to consider w/Golf & Lakeside Pavilion Parking Lot Project

Lakeside Pavilion S Parking Lot Preliminary Concept



BMP Concepts

COMO REGIONAL PARK - PARKING IMPROVEMENTS

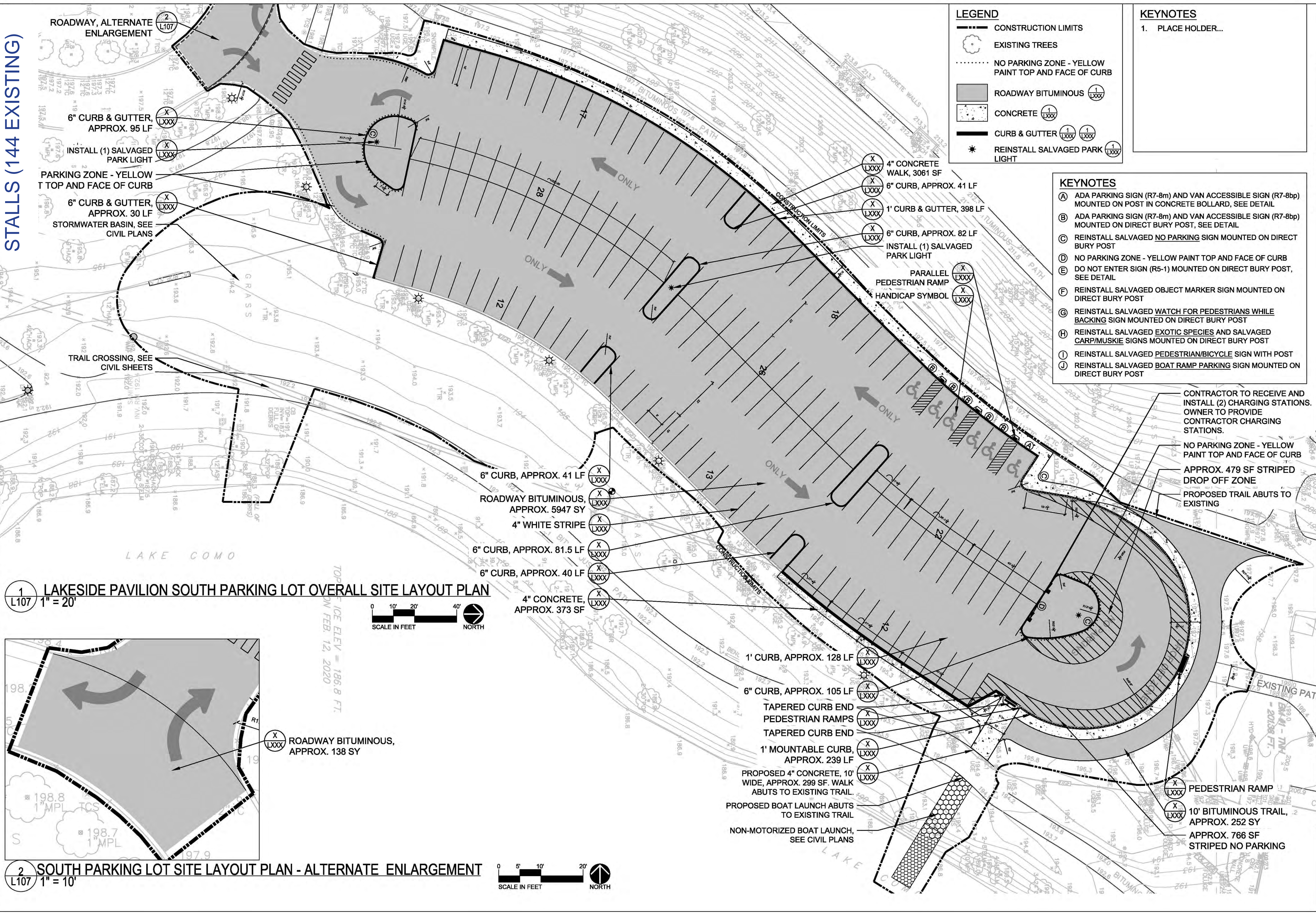


PARKS & RECREATION INTERNAL MEETING | Sept 20, 2021

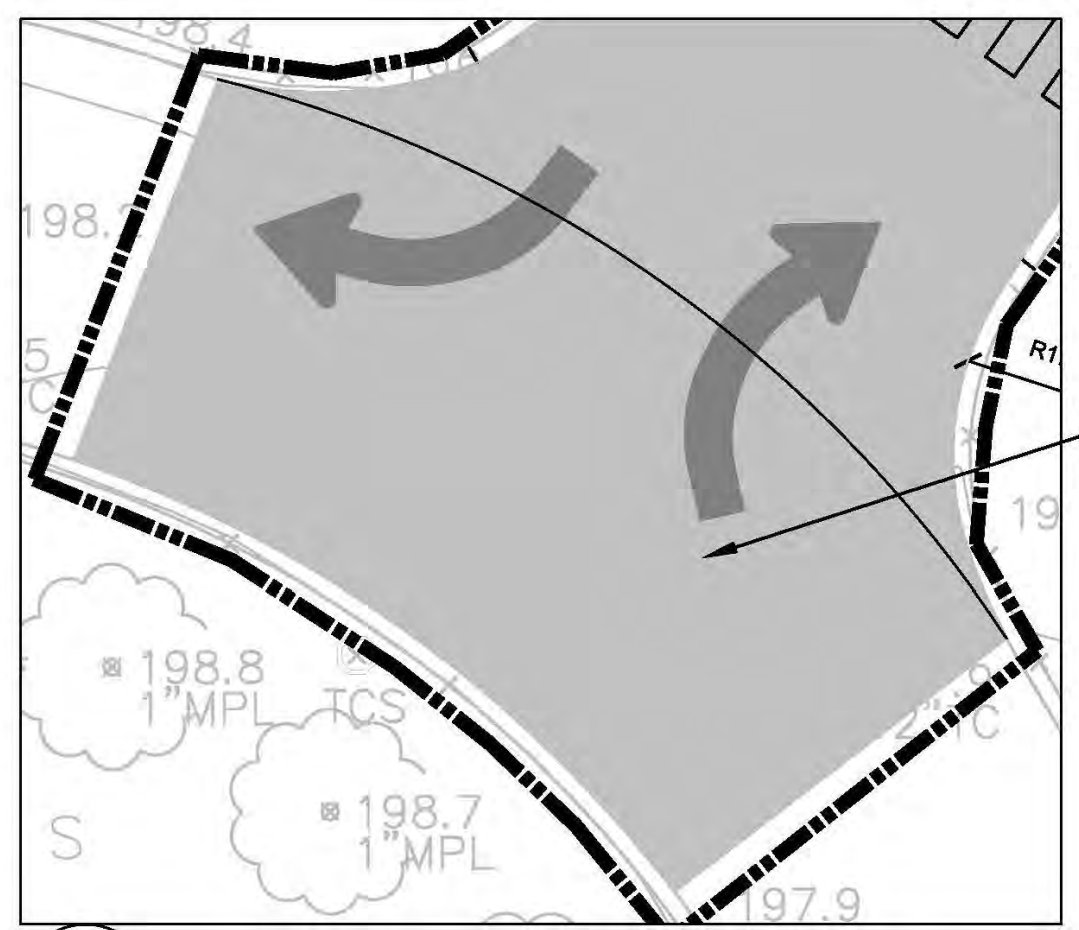
Project Manager: Anne Gardner, Anne.Gardner@ci.stpaul.mn.us

148 PROPOSED PARKING STALLS (144 EXISTING)

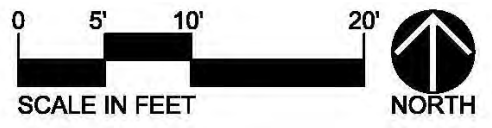
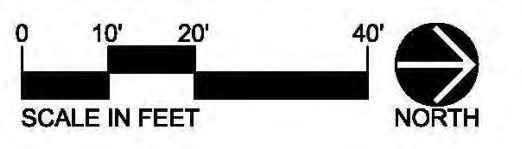
P:\Como Park\20-10-10 Como Transportation Projects Golf & Pavilion Lots\Construction Docs\Sheet Files\20-10-10 Como Transportation - LAYOU1.dwg Jul 23, 2021 - 12:44pm



1 LAKESIDE PAVILION SOUTH PARKING LOT OVERALL SITE LAYOUT PLAN
1" = 20'



2 SOUTH PARKING LOT SITE LAYOUT PLAN - ALTERNATE ENLARGEMENT
1" = 10'



LEGEND

- CONSTRUCTION LIMITS
- EXISTING TREES
- NO PARKING ZONE - YELLOW PAINT TOP AND FACE OF CURB
- ROADWAY BITUMINOUS
- CONCRETE
- CURB & GUTTER
- REINSTALL SALVAGED PARK LIGHT

KEYNOTES

- PLACE HOLDER...

KEYNOTES

- ADA PARKING SIGN (R7-8m) AND VAN ACCESSIBLE SIGN (R7-8bp) MOUNTED ON POST IN CONCRETE BOLLARD, SEE DETAIL
- ADA PARKING SIGN (R7-8m) AND VAN ACCESSIBLE SIGN (R7-8bp) MOUNTED ON DIRECT BURY POST, SEE DETAIL
- REINSTALL SALVAGED NO PARKING SIGN MOUNTED ON DIRECT BURY POST
- NO PARKING ZONE - YELLOW PAINT TOP AND FACE OF CURB
- DO NOT ENTER SIGN (R5-1) MOUNTED ON DIRECT BURY POST, SEE DETAIL
- REINSTALL SALVAGED OBJECT MARKER SIGN MOUNTED ON DIRECT BURY POST
- REINSTALL SALVAGED WATCH FOR PEDESTRIANS WHILE BACKING SIGN MOUNTED ON DIRECT BURY POST
- REINSTALL SALVAGED EXOTIC SPECIES AND SALVAGED CARP/MUSKIE SIGNS MOUNTED ON DIRECT BURY POST
- REINSTALL SALVAGED PEDESTRIAN/BICYCLE SIGN WITH POST
- REINSTALL SALVAGED BOAT RAMP PARKING SIGN MOUNTED ON DIRECT BURY POST

SAINT PAUL MINNESOTA
Parks and Recreation Department
400 City Hall Annex
25 West Street
Saint Paul, MN 55102

I hereby certify that this plan, specification, or report was prepared by me or under my direct supervision and that I am a duly Licensed Landscape Architect under the laws of the State of Minnesota.
Printed Name: ANNE GARDNER
Signature:
Date: XXXXXXXX License #: XXXXX

City of Saint Paul Department of Parks and Recreation
COMO REGIONAL PARK TRANSPORTATION GOLF COURSE & LAKESIDE PAVILION PARKING LOTS
1360 LEXINGTON PKWY N, SAINT PAUL, MN 55103

No.	Date	Revision Description

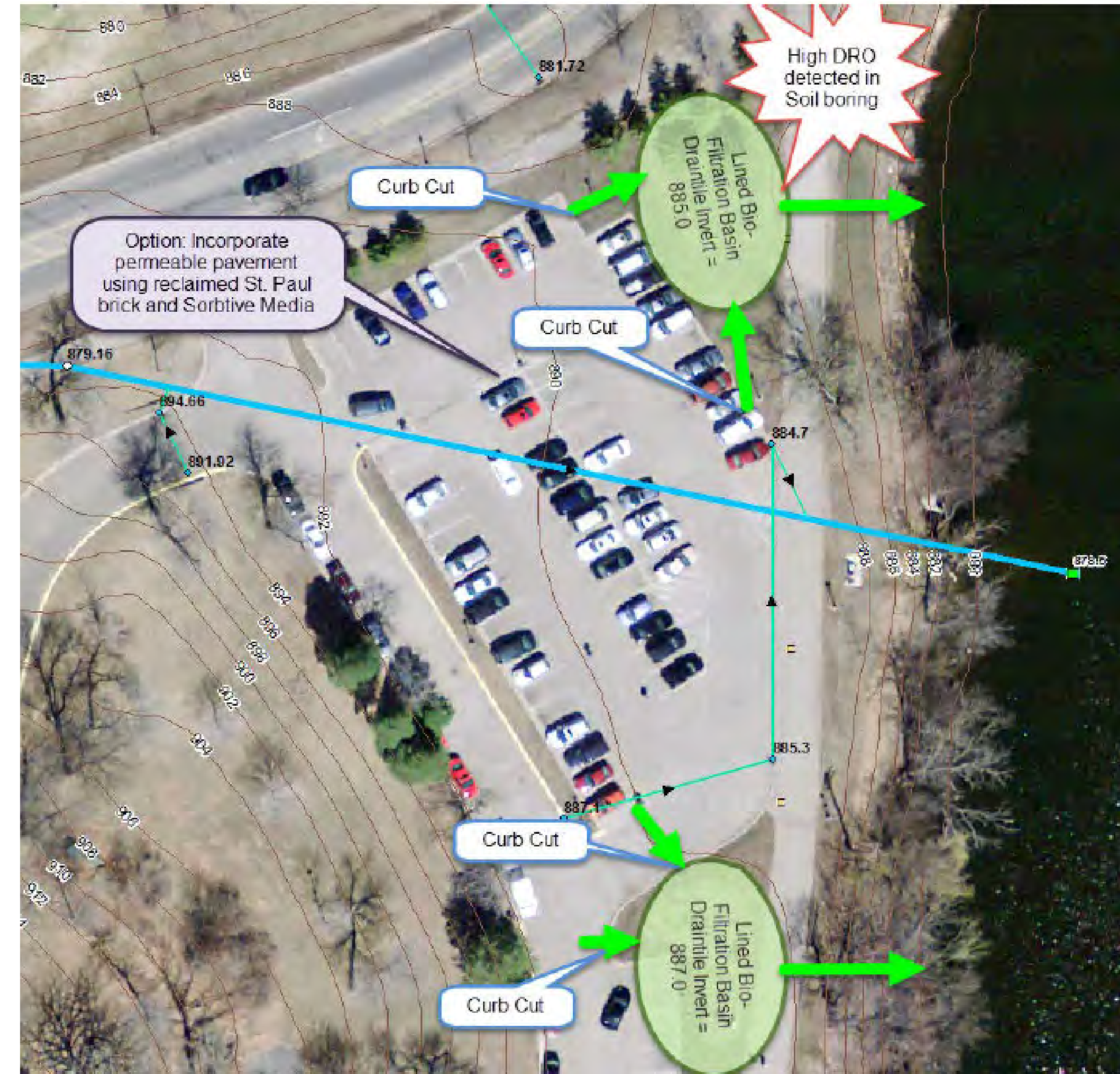
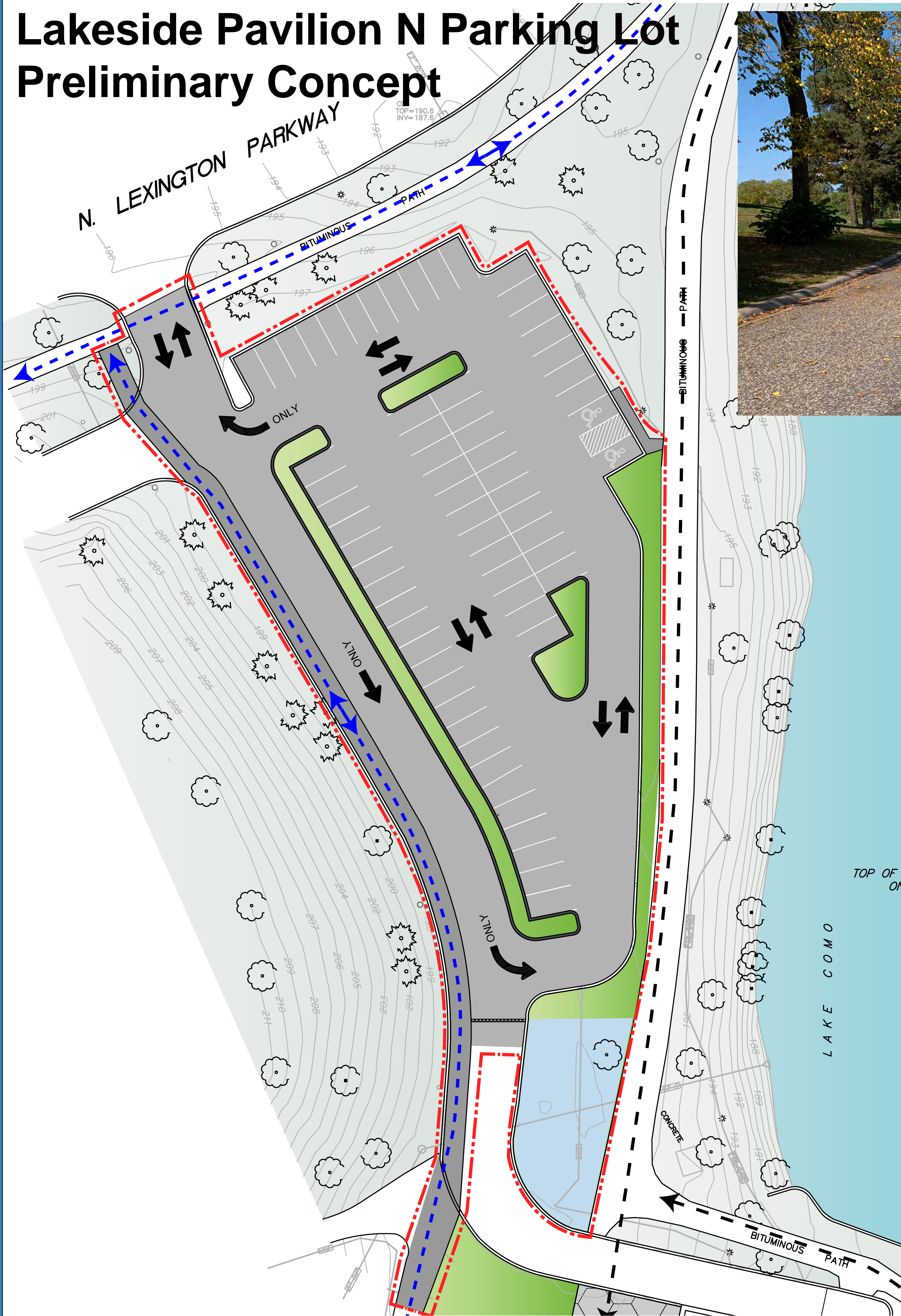
PROJECT NUMBER: L20-10-10
DATE: XXXXXXXX
DRAWN BY: CY
CHECKED BY: AG
SUPERVISOR: ES

DRAFT NOT FOR CONSTRUCTION SITE LAYOUT PLAN

L107

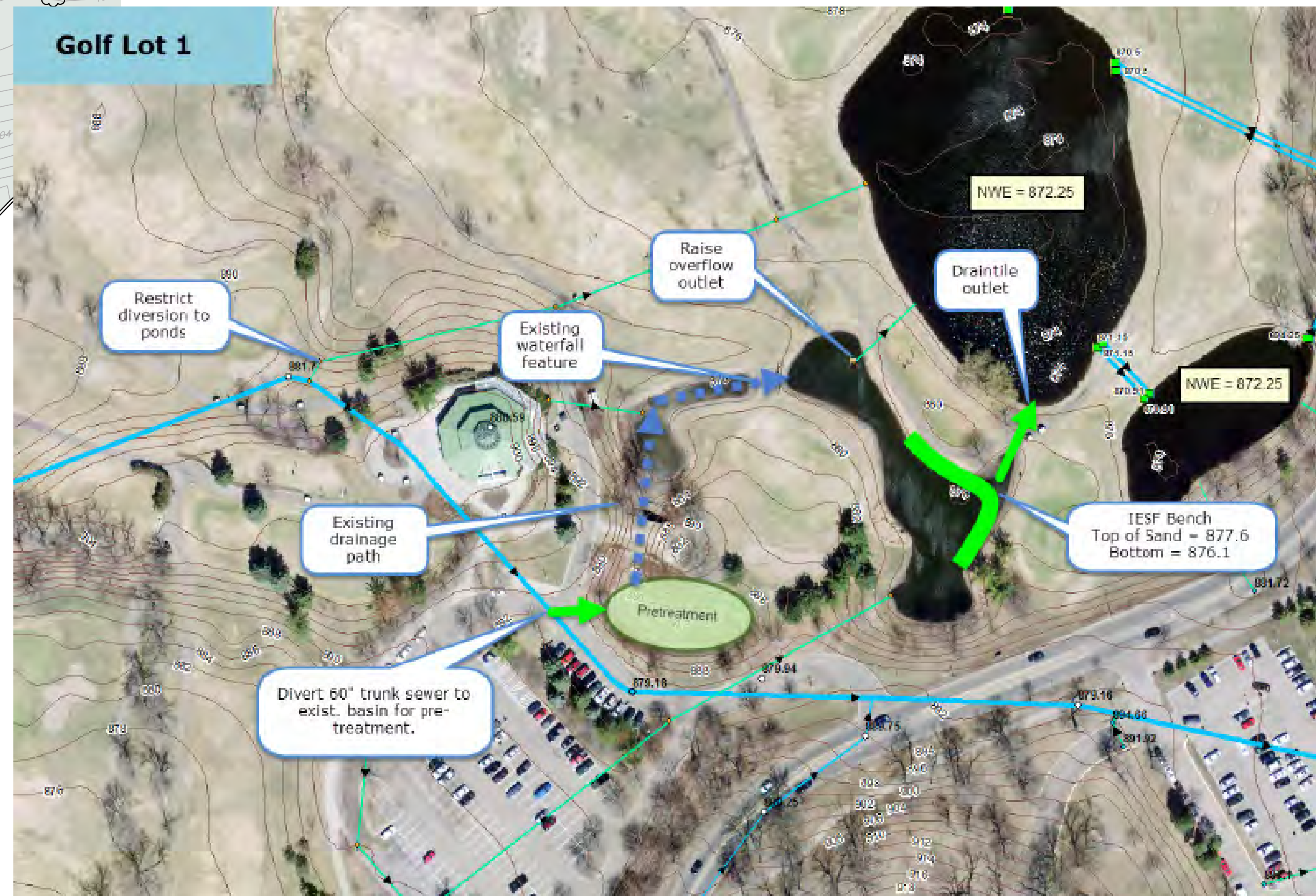
Lakeside Pavilion S Parking Lot Concept

Lakeside Pavilion N Parking Lot Preliminary Concept



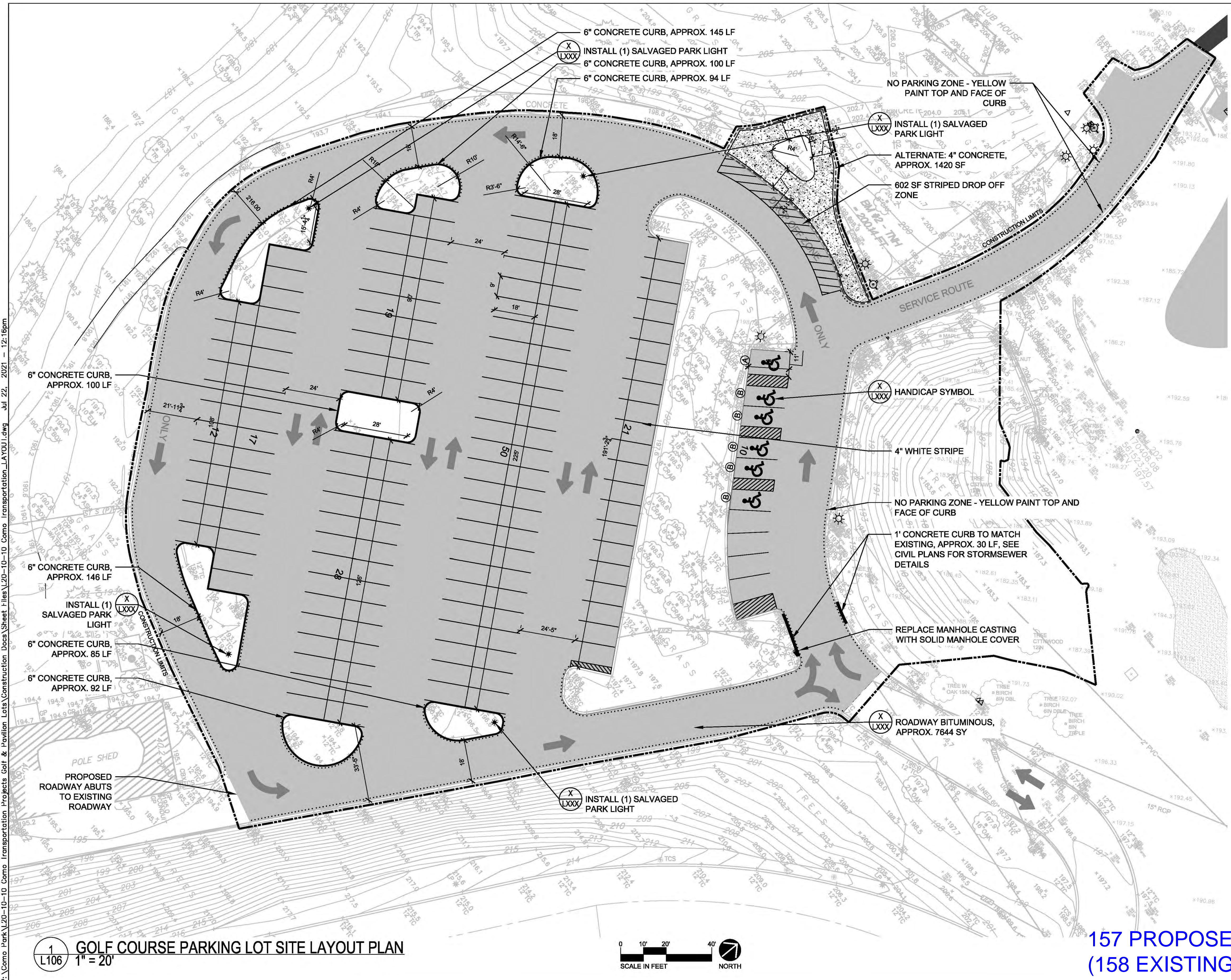
BMP Concepts

Golf Course Parking Lot Preliminary Concept



BMP Concepts

Golf Course Parking Lot Concept



LEGEND

- CONSTRUCTION LIMITS
- ☼ EXISTING TREES
- NO PARKING ZONE - YELLOW PAINT TOP AND FACE OF CURB
- ▒ ROADWAY BITUMINOUS
- ▒ CONCRETE
- CURB & GUTTER
- * REINSTALL SALVAGED PARK LIGHT

NOTES

- SEE CIVIL PLANS FOR ALL...

- KEYNOTES**
- (A) ADA PARKING SIGN (R7-8m) AND VAN ACCESSIBLE SIGN (R7-8bp) MOUNTED ON POST IN CONCRETE BOLLARD, SEE DETAIL
 - (B) ADA PARKING SIGN (R7-8m) AND VAN ACCESSIBLE SIGN (R7-8bp) MOUNTED ON DIRECT BURY POST, SEE DETAIL
 - (C) REINSTALL SALVAGED NO PARKING SIGN MOUNTED ON DIRECT BURY POST
 - (D) NO PARKING ZONE - YELLOW PAINT TOP AND FACE OF CURB
 - (E) DO NOT ENTER SIGN (R5-1) MOUNTED ON DIRECT BURY POST, SEE DETAIL
 - (F) REINSTALL SALVAGED OBJECT MARKER SIGN MOUNTED ON DIRECT BURY POST
 - (G) REINSTALL SALVAGED WATCH FOR PEDESTRIANS WHILE BACKING SIGN MOUNTED ON DIRECT BURY POST
 - (H) REINSTALL SALVAGED EXOTIC SPECIES AND SALVAGED CARP/MUSKIE SIGNS MOUNTED ON DIRECT BURY POST
 - (I) REINSTALL SALVAGED PEDESTRIAN/BICYCLE SIGN WITH POST
 - (J) REINSTALL SALVAGED BOAT RAMP PARKING SIGN MOUNTED ON DIRECT BURY POST



SAINT PAUL MINNESOTA
 Parks and Recreation Department
 400 City Hall Annex
 25 West Street
 Saint Paul, MN 55102

I hereby certify that this plan, specification, or report was prepared by me or under my direct supervision and that I am a duly Licensed Landscape Architect under the laws of the State of Minnesota.
 Printed Name: ANNE GARDNER
 Signature:
 Date: XXXXXXXX License #: XXXXX

City of Saint Paul Department of Parks and Recreation
COMO REGIONAL PARK TRANSPORTATION GOLF COURSE & LAKESIDE PAVILION PARKING LOTS
 1431 LEXINGTON PKWY N, SAINT PAUL, MN 55103

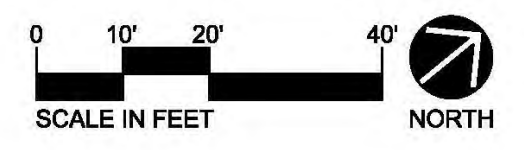
No.	Date	Revision Description

PROJECT NUMBER: L20-10-10
 DATE: XXXXXXXX
 DRAWN BY: CY
 CHECKED BY: AG
 SUPERVISOR: ES

DRAFT NOT FOR CONSTRUCTION
 SITE LAYOUT PLAN

L106

1 L106 GOLF COURSE PARKING LOT SITE LAYOUT PLAN
 1" = 20'

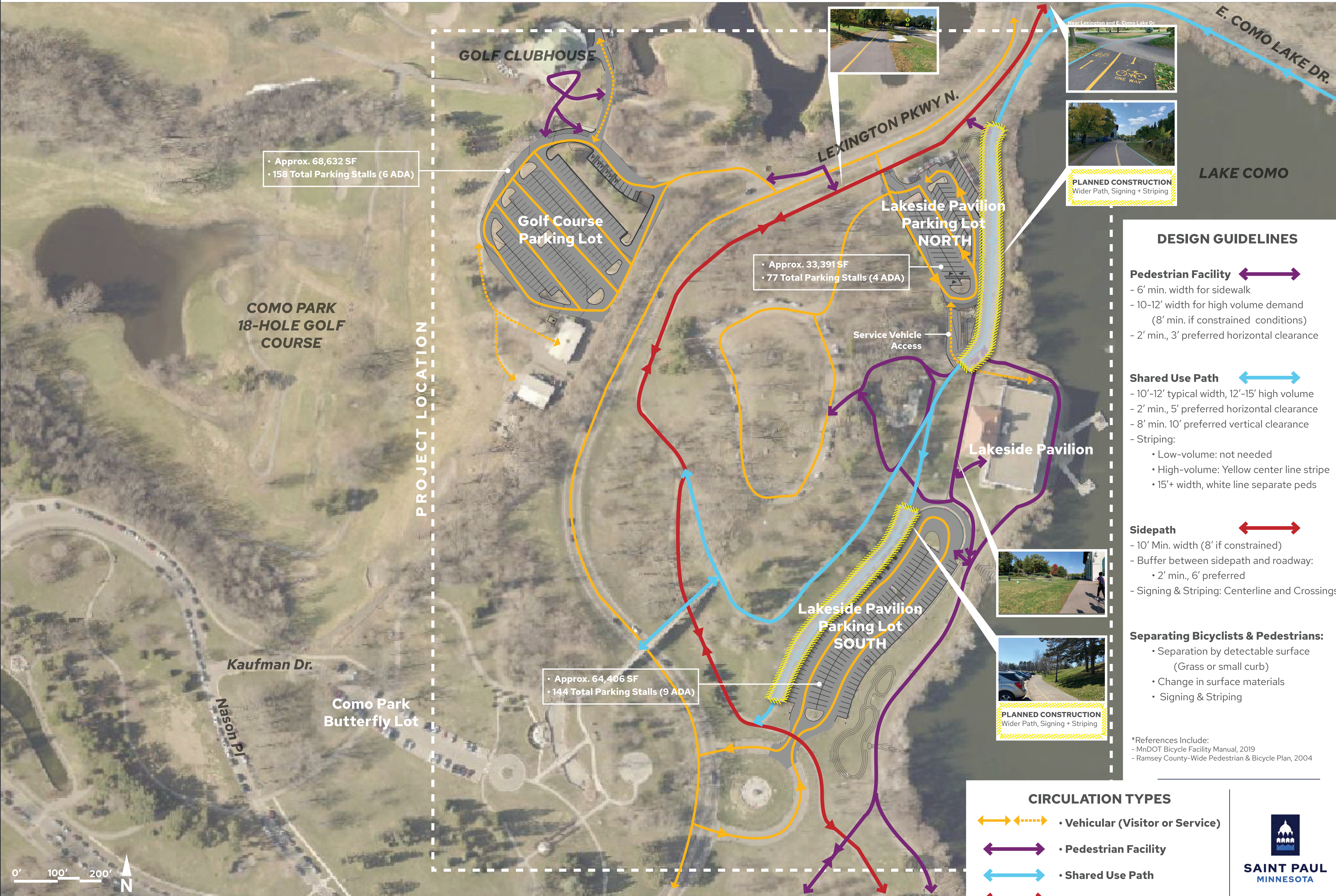


157 PROPOSED PARKING STALLS
(158 EXISTING)

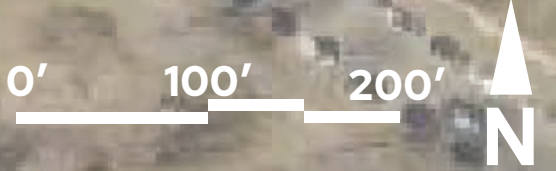
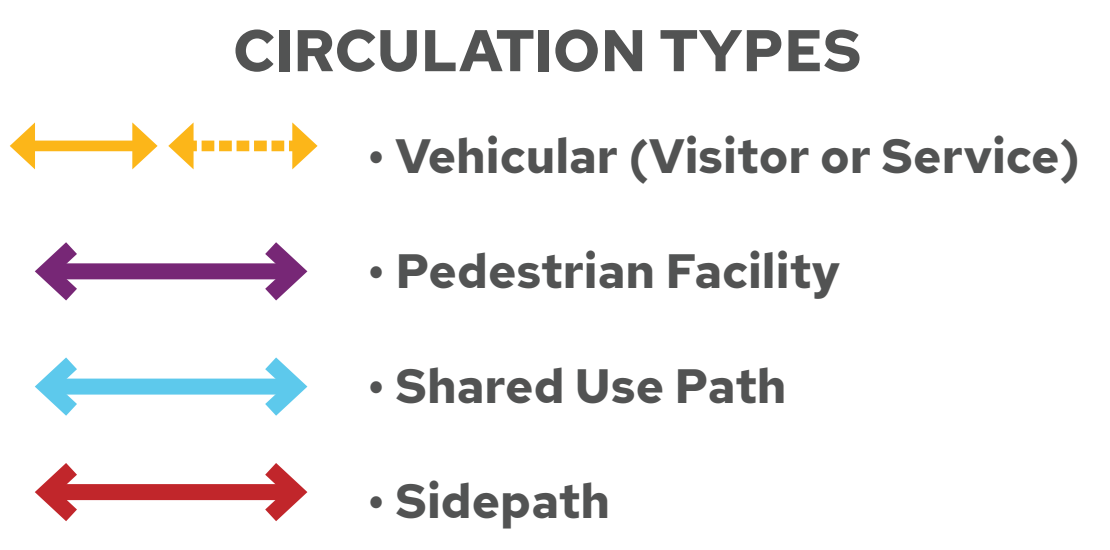
COMO REGIONAL PARK - PARKING IMPROVEMENTS

PARKS & RECREATION INTERNAL MEETING | Sept 20, 2021

Project Manager: Anne Gardner, Anne.Gardner@ci.stpaul.mn.us



- ### DESIGN GUIDELINES
- Pedestrian Facility**
 - 6' min. width for sidewalk
 - 10-12' width for high volume demand (8' min. if constrained conditions)
 - 2' min., 3' preferred horizontal clearance
 - Shared Use Path**
 - 10'-12' typical width, 12'-15' high volume
 - 2' min., 5' preferred horizontal clearance
 - 8' min. 10' preferred vertical clearance
 - Striping:
 - Low-volume: not needed
 - High-volume: Yellow center line stripe
 - 15'+ width, white line separate peds
 - Sidepath**
 - 10' Min. width (8' if constrained)
 - Buffer between sidepath and roadway:
 - 2' min., 6' preferred
 - Signing & Striping: Centerline and Crossings
 - Separating Bicyclists & Pedestrians:**
 - Separation by detectable surface (Grass or small curb)
 - Change in surface materials
 - Signing & Striping
- *References Include:
- MnDOT Bicycle Facility Manual, 2019
- Ramsey County-Wide Pedestrian & Bicycle Plan, 2004



BUDGET SUMMARY

Funding Sources

State Legacy Grant: \$1,875,000

CRWD Funding: \$ 187,000

Ramsey County BWSR Grant: \$22,693

Total: **\$2.0 million**

Expenses

In-House Design: \$125,000

Other Expenses:(survey, Geotech) \$25,000

Consultant Fees: \$146,000

Construction Estimate: \$1.7 million

Total: **\$1.99 million**

NEXT STEPS

Tentative Schedule:

- + Site Plan Review
- + Sept 2021 Bid Project

QUESTIONS & DISCUSSION