

City General Fund

General Fund – 2022 Adopted Budget

Purpose: The General Fund is the principal financial support for such basic services as the police and fire departments, parks and recreation, and general government operations (e.g., Mayor and City Council, human resources, finance, and other internal services). The major revenue sources for this fund are property taxes, local government aid (LGA), franchise fees, and other general revenues. The tables and graphs on the following pages detail the General Fund’s adopted 2022 spending and revenue plan.

Budget Highlights, Issues, and Challenges

COVID-19 Pandemic: The COVID-19 pandemic continues to impact many aspects of daily life. The impacts on the City of Saint Paul budget linger. The pandemic prompted changes to behavior and spending patterns, significantly reducing City revenues in 2020 and 2021.

This budget assumes many of these impacts will continue into 2022. Projections reflect declines in major General Fund revenues compared to pre-pandemic levels. Revenue uncertainty remains around the impacts stemming from hybrid work and emerging variants of the virus.

As a result of these revenue impacts, the 2021 budget included \$8 million in spending reductions. In 2022, American Rescue Plan (ARP) Act funding allowed for the restoration of \$2.2 million in Library and Parks and Recreation services. The 2022 budget also adds \$3.3 million in ARP funds for financial stabilization in the General Fund.

Current Service Level Adjustments: Summary sections for each department indicate current service level adjustments, including spending and revenue to maintain a department’s same services as the previous year. Inflationary pressures including cost of living allowances built into union contracts and rising employee health care costs drive the increased cost of service delivery.

The City must continue to find ways to manage these costs prudently and responsibly to maintain service delivery, as well as ensure the integrity of the City’s finances. The largest

General Fund expense is employee wages and benefits – over 80% of all City General Fund spending is for personnel costs.

The cost of other goods and services also continues to rise, putting pressure on department budgets.

Property Tax Base and Levy: Over 80% of Saint Paul’s local property tax base consists of residential properties, including both owner-occupied and rental units. Historically, as the home to many tax-exempt educational, medical, and state government institutions, about 20% of the City’s property has been exempted entirely from paying property taxes.

The adopted budget includes a 6.2% increase in the property tax levy. The total 2022 adopted levy is \$175.4 million. The General Fund receives 77% of the levy. The Library Agency receives 11% of the levy. City debt service accounts for 11% of the levy, with the remainder levied on behalf of the Saint Paul Port Authority.

The 2022 adopted budget assumes 2% property tax non-payment, returning to the assumption in the 2020 adopted budget. The 2021 adopted budget assumed 3% non-payment due to economic conditions.

Property taxes in the General Fund make up 41.3% of the fund’s total revenue.

General Fund – 2022 Adopted Budget

State Budget Decisions and LGA: The future of state Local Government Aid (LGA) remains a key variable in the City's ability to provide basic services. LGA represents a significant revenue source for the City's General Fund, accounting for over 22% of general fund revenues.

Two significant sets of reductions to LGA in 2003 and 2008-09 resulted in a series of reductions to City services. The lack of predictability negatively challenged the City's ability to plan from year to year. The anticipated LGA in 2003 for Saint Paul was over \$76 million. LGA received by the City fell to its lowest point in 2010 at around \$50 million.

The 2022 budget anticipates nearly \$72 million in LGA, about a \$1 million increase compared to 2021. If the LGA amount in 2003 had grown by the rate of inflation, the 2022 LGA amount would be nearly \$127 million.

Recent increases in LGA renew the state and local fiscal relationship, helping to make local budget planning and service delivery more predictable for the residents of Saint Paul.

Other Major General Fund Revenues:

In addition to property taxes and LGA, major revenue sources for this fund are:

- ❖ Franchise fees – 8%
- ❖ Other revenues, aids, and user fees – 28.7%

Maintaining Adequate Financial Reserves: From 1994 to 2005, the City spent from its General Fund balance to finance a share of the annual operating budget. These actions decreased the fund balance from its peak in 1998 of 31% of subsequent year spending to just under 15% in 2005.

In 2006, the City enacted a fund balance policy mandating that the General Fund's balance be at least 15% of combined General Fund and Library operating spending. Despite significant mid-year LGA cuts in 2008 through 2011, the City continued to comply with the adopted fund balance policy. For example, in 2020, the City resolved a mid-year COVID-related budget deficit of over \$22 million without using fund balance.

The 2022 adopted budget maintains compliance with the City fund balance policy. The 2021 adopted and 2022 adopted budgets use a combination of ongoing and one-time solutions to balance the budget.

The City assumes over the long-term that the impacted revenues will start to see a slow recovery starting in 2021 continuing in 2022.

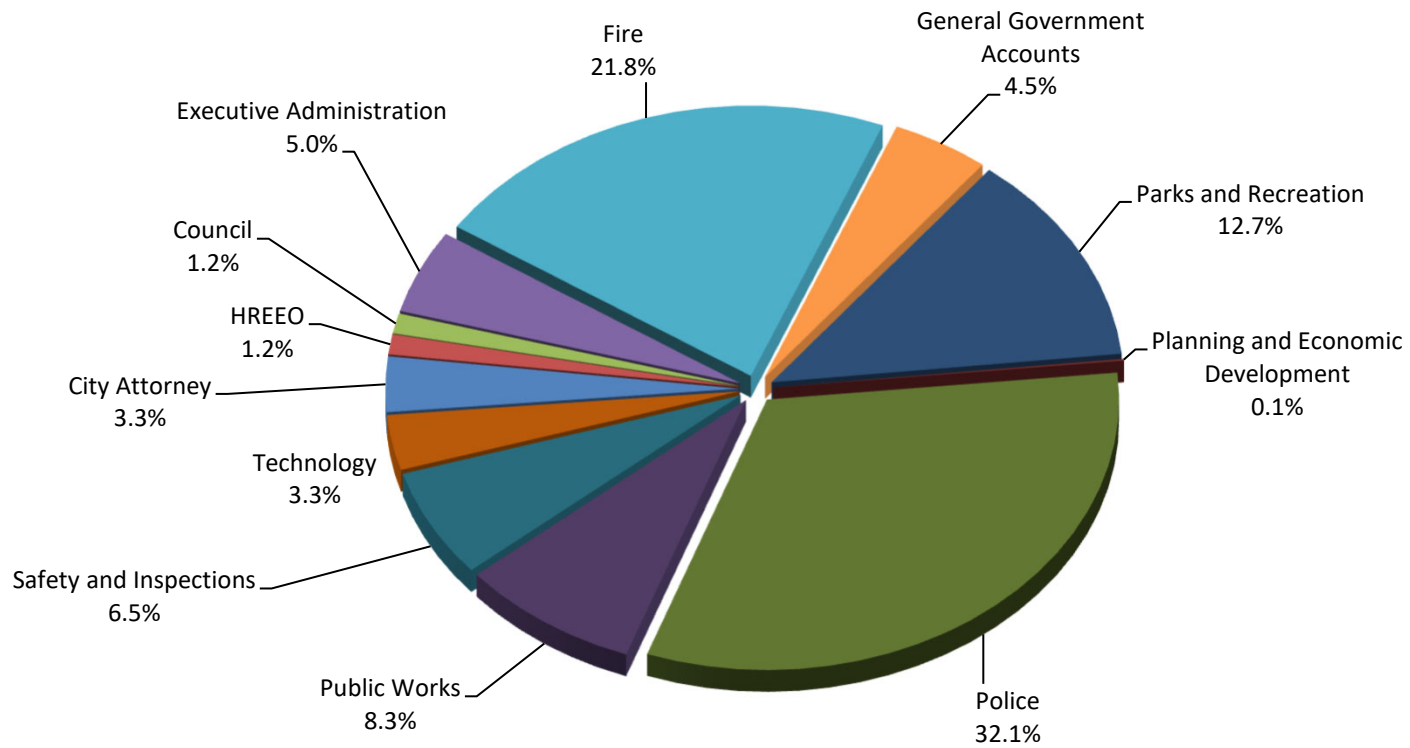
General Fund Budget

General Fund Spending (By Department)				
	2020 Actual	2021 Adopted Budget	2022 Adopted Budget	
Department/Office				
City Attorney	8,837,765	9,140,520	10,622,074	
Council	3,525,662	3,821,912	3,824,299	
Emergency Management	1,122,801	479,855	5,139,499	
Financial Services	4,857,042	4,184,409	4,067,098	
Fire and Safety Services	66,211,456	68,052,502	70,657,039	
General Government Accounts	10,842,154	11,557,141	14,776,811	
HREEO	2,919,217	3,375,131	3,784,689	
Human Resources	4,379,262	4,975,635	5,139,555	
Mayor's Office	1,890,861	2,089,775	2,169,628	
Parks and Recreation	37,229,996	39,563,374	41,118,438	
Planning and Economic Development	0	0	349,132	
Police	103,452,023	104,781,781	104,027,529	
Public Works	28,493,425	28,816,044	26,775,920	
Safety and Inspection	19,782,863	20,050,602	21,107,117	
Technology	11,868,691	12,516,429	10,622,041	
Total	305,413,218	313,405,109	324,180,869	

General Fund Budget

2022

Adopted Spending by Department



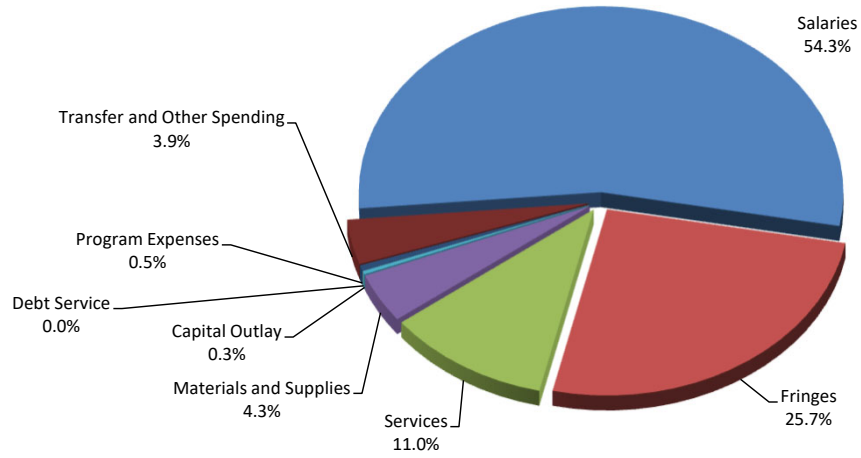
General Fund Budget

General Fund Spending (By Major Account)			
	2020 Actual	2021 Adopted Budget	2022 Adopted Budget
Object			
Salaries	164,029,917	170,493,497	176,158,072
Fringes	73,800,534	80,131,814	83,380,935
Services	33,749,623	31,017,734	35,687,299
Materials and Supplies	14,473,776	15,694,460	13,944,770
Capital Outlay	1,816,384	786,472	786,472
Debt Service	7,580	129,606	66,987
Program Expenses	1,240,682	1,539,571	1,689,571
Transfer and Other Spending	<u>16,294,722</u>	<u>13,611,955</u>	<u>12,466,762</u>
Total	305,413,218	313,405,109	324,180,869

General Fund Financing (Revenue By Source)			
	2020 Actual	2021 Adopted Budget	2022 Adopted Budget
Source			
Taxes	128,894,386	126,331,098	135,105,342
Fees, Sales and Services	38,401,260	42,372,995	44,531,298
Franchise Fees	28,825,422	25,528,490	26,014,223
Fines and Forfeitures	137,663	51,500	63,500
Intergovernmental Revenue	85,491,462	86,070,146	88,278,512
Assessments	80,213	-	26,700
Interest	2,596,556	1,064,608	1,064,608
License and Permits	12,211,545	12,421,872	12,746,757
Transfers and Other Financing	<u>16,070,082</u>	<u>19,564,399</u>	<u>16,349,927</u>
Total	312,708,588	313,405,109	324,180,869

General Fund Budget

2022 Adopted Spending By Major Object



2022 Adopted Revenue By Source

