



ST. PAUL-CHANGSHA CHINA FRIENDSHIP GARDEN

SISTER-CITIES SINCE 1988

DESIGN ADVISORY COMMITTEE (DAC) #6 - MAR 17, 2022

DESIGN ADVISORY COMMITTEE MTG #6

6:30 WELCOME/INTRODUCTIONS

**6:35 DESIGN ADVISORY COMMITTEE (DAC) ROLE
PROJECT BACKGROUND/ DESIGN PRINCIPLES
PLAZA SIZE: 2,800 SF W/ GRASS OVERFLOW**

6:45 DISCUSSION

**7:30 NEXT STEPS
HMONG PLAZA REVISED LAYOUT**

MEETING PURPOSE:

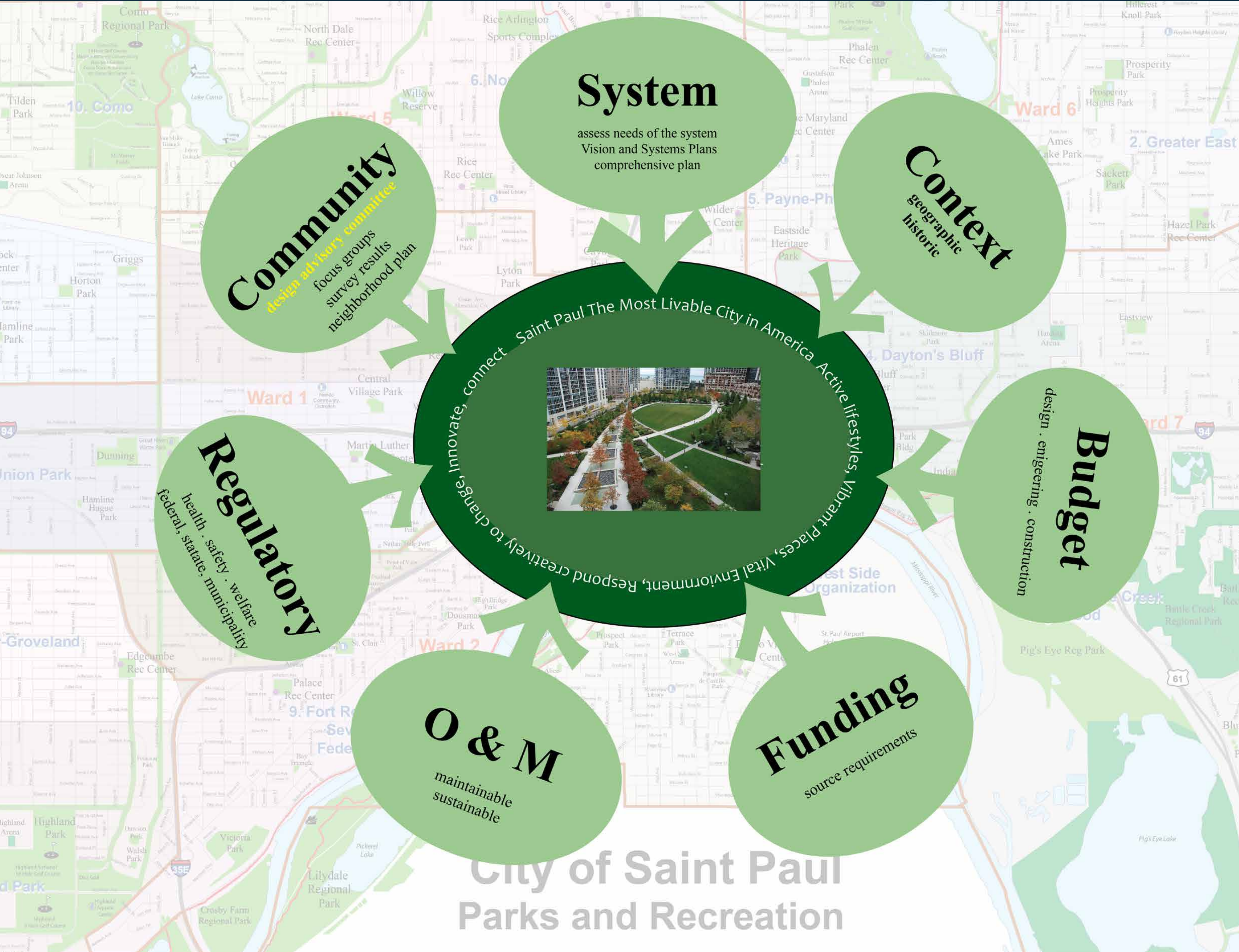
- 1. DAC ROLE AND RESPONSIBILITIES**
- 2. REVIEW CHINESE GARDEN PHILOSOPHY AND DESIGN PRINCIPLES**
- 3. APPROVAL OF A 2,800 SF PLAZA WITH GRASS OVERFLOW FOR LARGER GROUPS**

NOTE: THE CITY HAS RELEASED A STATEMENT ABOUT THE ART STONE DISCUSSION. IN THE MEANTIME, WE ARE MOVING FORWARD WITH PHASE II PLANNING BECUASE OF FUNDING DEADLINES. THE ART STONES ARE IN A TEMPORARY LOCATION AND A PERMANENT LOCATION WILL BE DETERMINED THROUGH THIS PROCESS.

MEETING TIPS

- PLEASE KEEP YOURSELF ON MUTE WHEN NOT TALKING**
- IF YOU HAVE QUESTIONS, PLEASE USE THE CHAT OR RAISE "VIRTUAL" HAND**
- MEETING RECORDING, ATTENDEES LIST, AND CHAT CONTENT WILL BE SENT POSTED ON WEBSITE:
www.stpaul.gov/phalenchinagarden**

SYSTEM PLAN VISION



DESIGN ADVISORY COMMITTEE PROCESS

PARKS & RECREATION PHASE II PROCESS

DEVELOPED AS PART OF ENGAGEMENT PROCESS



DESIGN ADVISORY COMMITTEE (DAC)

Role: Bring ideas to the DAC meetings, communicate results of these meetings to the greater community, decisions by consensus.

INCLUDES:

WARD 1 & WARD 6

MCFGs BOARD

HMONG ADVISORY COMMITTEE (HAC) REPRESENTATIVES

CHINESE ADVISORY COMMITTEE (CAC) REPRESENTATIVES

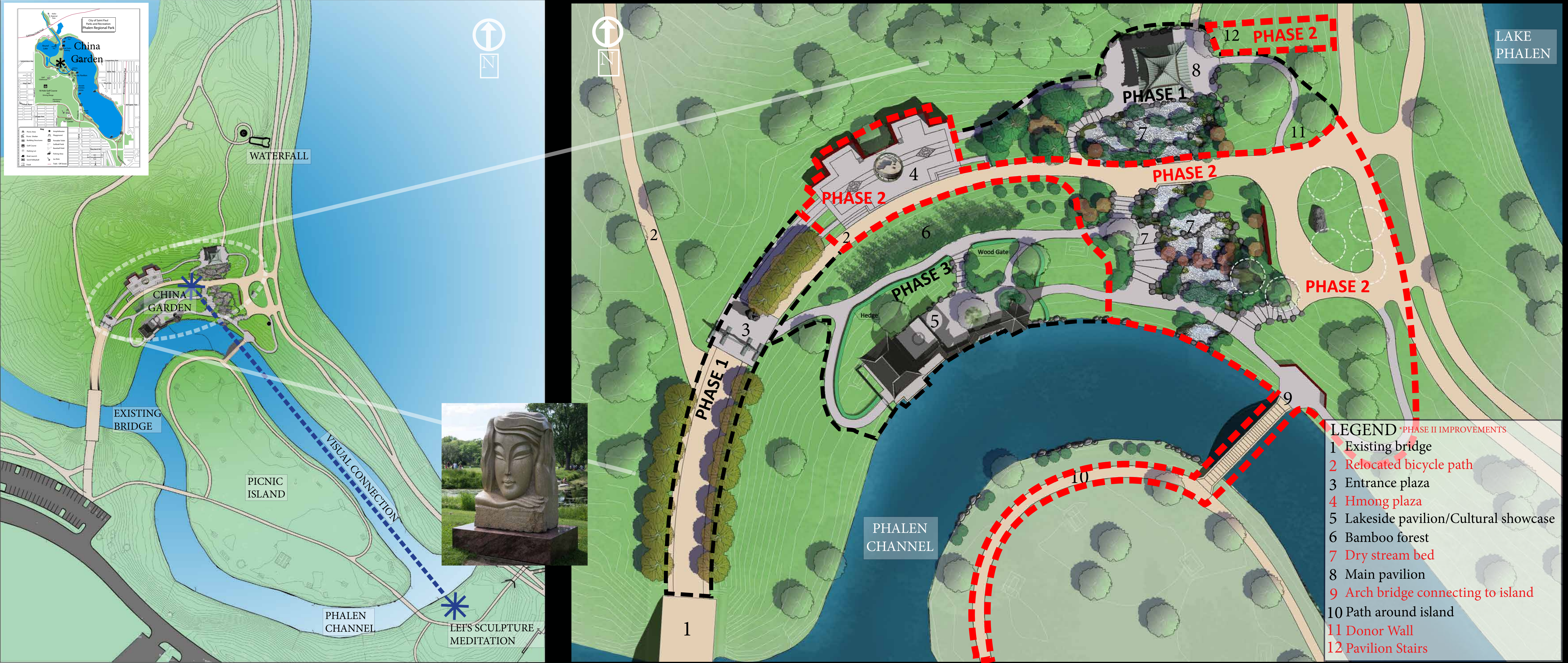
RESIDENTS OF PAYNE PHALEN PLANNING DISTRICT 5

ARTISTS & DESIGN PROFESSIONALS

ST PAUL YOUTH COMMISSION

PARKS & REC COMMISSION

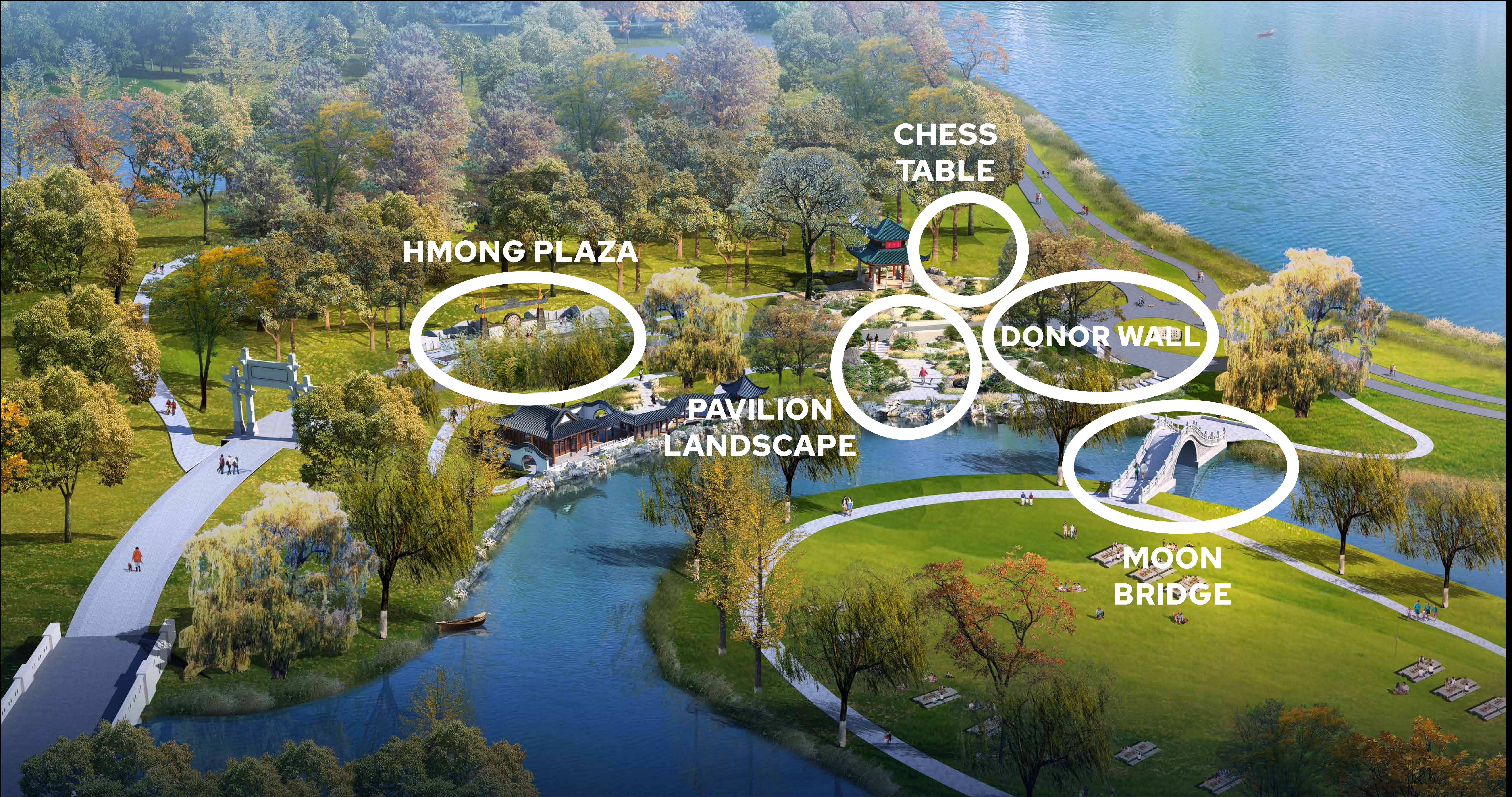
GARDEN LOCATION AND DESIGN ORGANIZATION



PHASE II FUNDING:
ARTS AND CULTURAL HERITAGE FUND LEGACY (DEADLINE JUNE 2023) & STATE BONDING (TBD)

PHASE II PROJECT GOALS:	
OCT - MAY	PHASE II DESIGN & COMMUNITY ENGAGEMENT
MAY - AUG	PHASE II CONSTRUCTION DOCUMENTS/BIDDING
SEPT - NOV	CONSTRUCTION OF HMONG PLAZA & PAVILION LANDSCAPE TO CHANNEL
SPRING '23	SUBSTANTIAL COMPLETION
JUNE 2023	FUNDING EXPIRES

BIRD'S EYE VIEW OF GARDEN - VIEW TO THE NORTH (2017)



2017 MASTER PLAN BASED UPON CHINESE GARDEN DESIGN PRINCIPLES



Liu Ming Yuan: An Introduction to Chinese Gardens

Professor Carol Brash,
College of Saint Benedict | Saint John's University

Phalen China Garden Design Advisory Committee, Guest
Speaker

PHASE II - HMONG PLAZA PROCESS

2017 MASTER PLAN: REQUEST FOR HMONG PLAZA

WE ARE HERE



PHASE II: VERIFY PLAZA SIZE AND LOCATION

GOING
HERE

PLAZA CHARACTER & CULTURAL DETAILS

CONSTRUCTION DOCUMENTS

FABRICATION/CONSTRUCTION

RECAP OF HMONG PLAZA DISCUSSION

WHAT WE HEARD:

- DESIRE SPACE FOR 200 PEOPLE.
- A 200-PERSON PLAZA WOULD NOT BE IN HARMONY WITH AN INTIMATE CHINESE GARDEN.
- ALTERNATE SITE CONSIDERED: WOULD BE OUTSIDE OF GARDEN - WOULD NOT PROMOTE FRIENDSHIP - TOO LATE TO MOVE THE PLAZA BECAUSE OF THE FENG SHUI BLESSING AND SITE DEDICATION

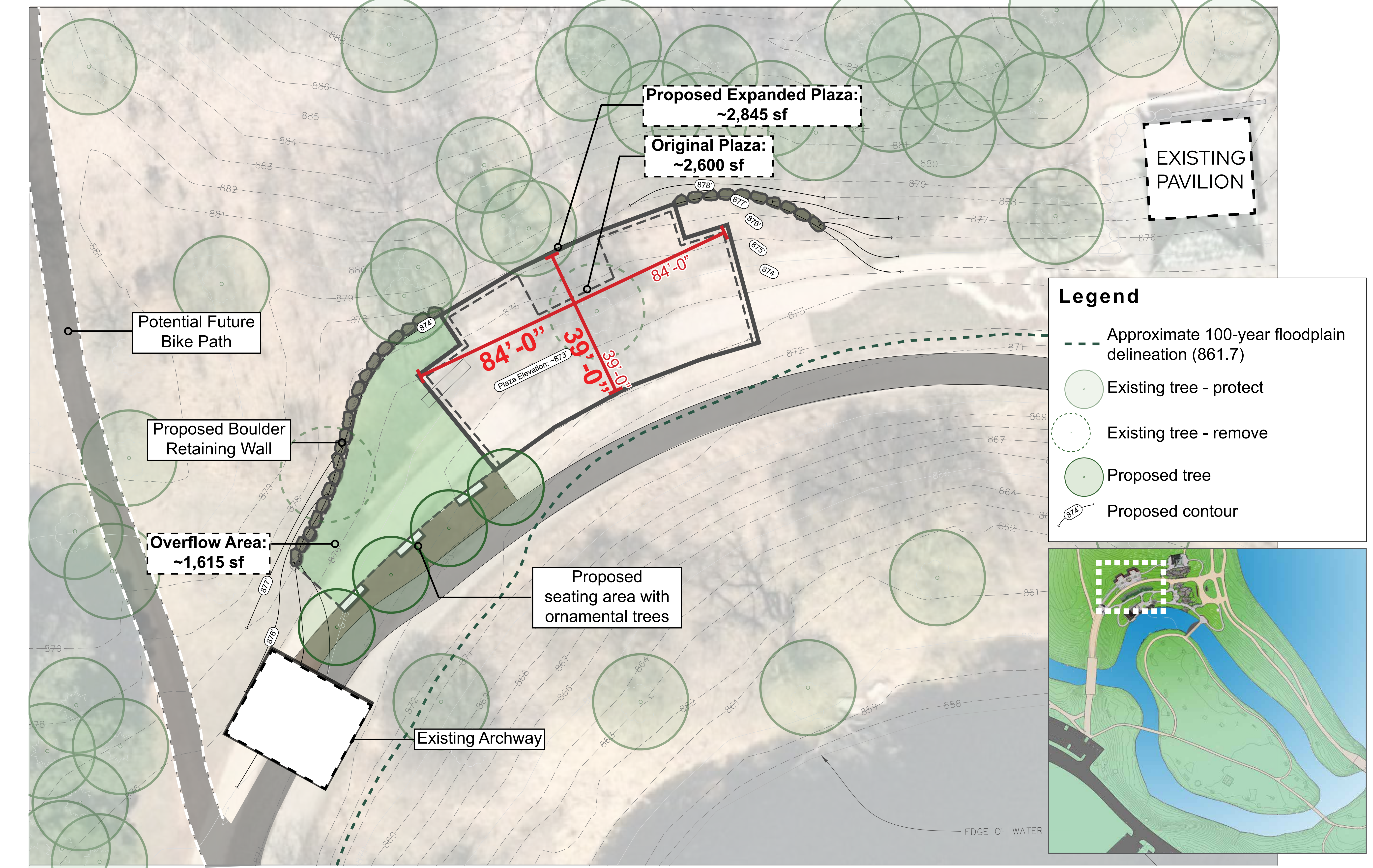
SOLUTION:

- MAXIMIZE AVAILABLE FOOTPRINT (INCREASE BY 250 SF) AND INCLUDE FLEXIBLE GRASS SPACE TO ACCOMMODATE LARGE GROUPS AS AN OVERFLOW SPACE.

CONSIDERATIONS:

- PROPOSED PLAZA INCREASED FROM 2,600 SF TO 2,800+ SF BY ADJUSTING LAYOUT.
- PROPOSED OVERFLOW IS IRRIGATED TURF GRASS.
- REGRADING & RETAINING WALL REQUIRED FOR FLAT, ADA ACCESSIBLE GRASS OVERFLOW SPACE.
- PERMITTING AND TYPICAL FEES REQUIRED FOR LARGE GROUPS. APPROXIMATELY 8-10 RENTALS PER YEAR.

HMONG PLAZA - EXISTING SITE



HMONG PLAZA - PROPOSED SITE FOOTPRINT



HMONG PLAZA OVERFLOW



SITE LAYOUT:

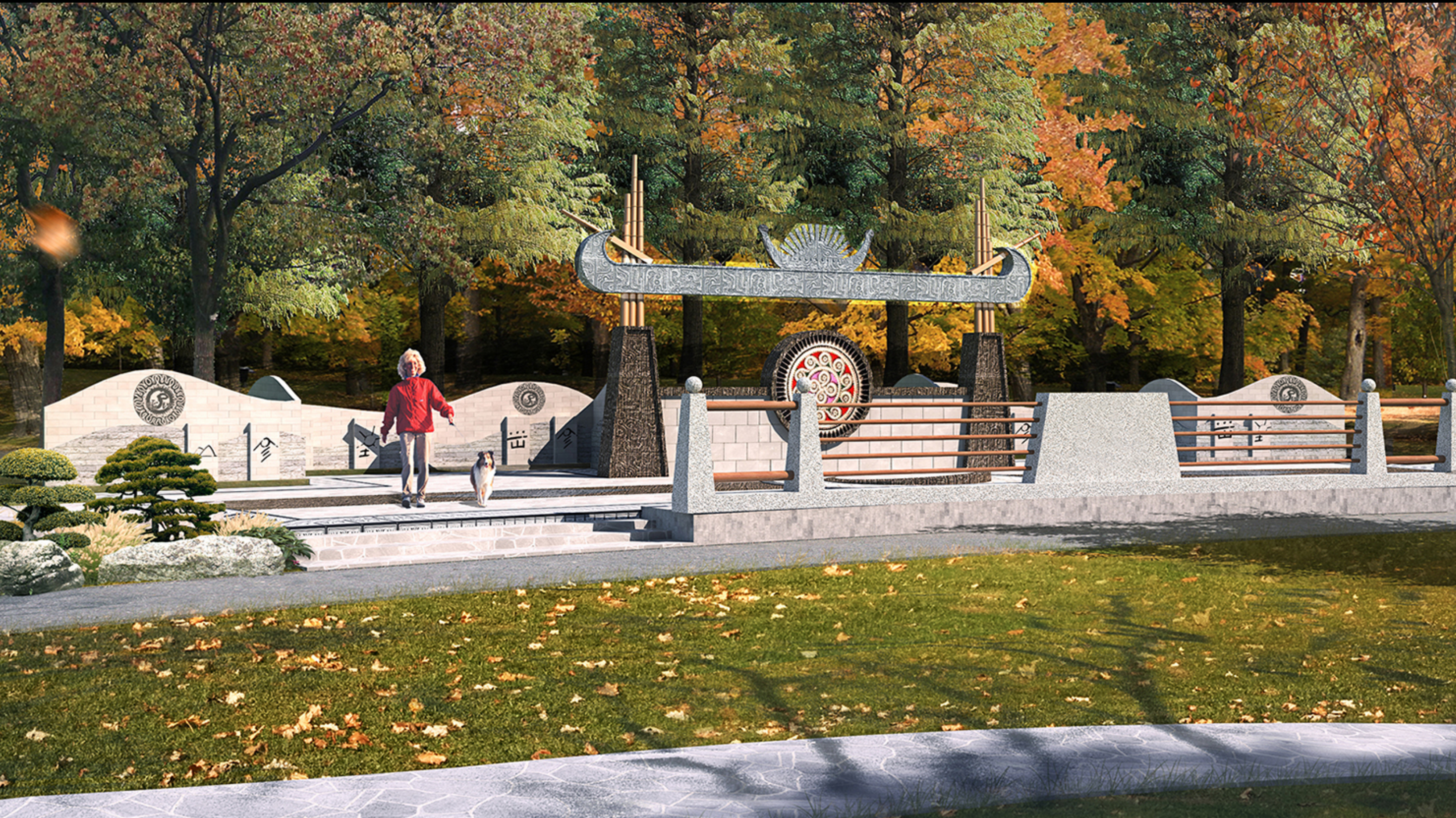
- FLAT, IRRIGATED TURF GRASS OVERFLOW SUPPORTS THE 157-170 (MIN.) PERSON PLAZA.
- MAINTAINS ADA ACCESSIBILITY
- BALANCES INTIMACY/HARMONY OF CHINESE GARDEN PRINCIPLES. PROMOTES FRIENDSHIP.
- PROJECT ADVANCES TO DESIGN DEVELOPMENT

NEXT STEP:

- PARKS AND RECREATION TO MOVE FORWARD WITH PHASE II DESIGN DEVELOPMENT.

QUESTIONS/COMMENTS?

HMONG PLAZA DETAILS



HMONG PLAZA
2017 MASTER PLAN

HMONG PLAZA 2022
REDESIGN



2022 HMONG ADVISORY GROUP

HMONG PLAZA DETAILS

CHARACTERISTICS:

- 60' X 50' OR 3,000 SF
- WALL 12' H X 20' L
- TWO LEVELS
- WOMAN'S HEADDRESS ON TOP OF WALL
- HMONG NECKLACE - 2 QEEJ WITH BASE
- MIGRATION WALL:
 - MAP
 - HISTORY
 - DESCRIPTION
 - CULTURAL CHANGES
- GRINDING STONE SCULPTURE
- SYMBOLS:
 - HMONG DESIGN, PHOENIX, BUTTERFLY

CONSIDERATIONS:

- SCALE
- ORIENTATION
- SYMBOLS
- MAINTENANCE, MATERIALS

NEXT STEPS:

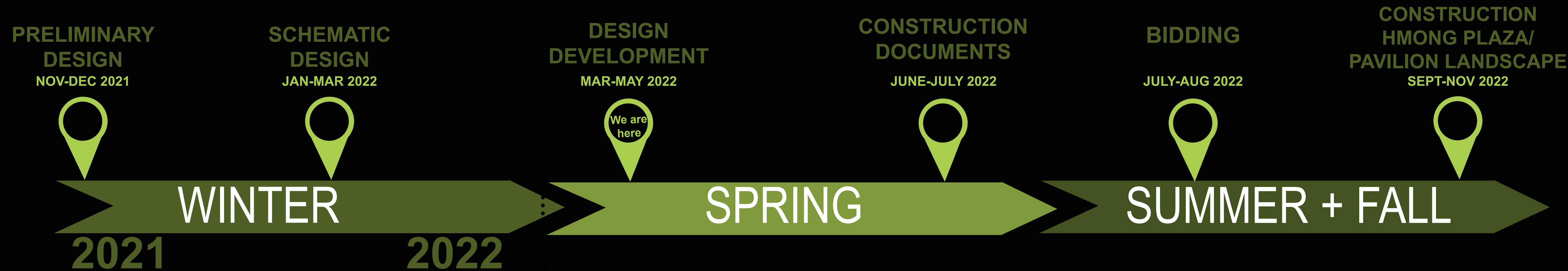
- PHASE II (INCLUDING HMONG PLAZA) TO BE DESIGNED BY SUBCOMMITTEE OF DESIGN PROFESSIONALS AND ARTISTS.
- PRESENT DESIGN TO ADVISORY COMMITTEE IN APRIL.



HMONG PLAZA - 2022 HMONG ADVISORY GROUP

60'-0"

NEXT STEPS



- Preliminary Design
 - DAC #1: 10/18 (Virtual)
 - DAC #2: 11/10 (Virtual)
 - DAC #3: 11/17 (Virtual)
- Schematic Design
 - DAC #4: 01/11 (Virtual)
 - DAC #5: 01/18 (Virtual)
 - HMONG ADVISORY: 2/3
 - DAC #6: 3/17 (Virtual)**
- Design Development
 - DAC #7: Mid-April
 - DAC #8: Early-May
 - Public Review: May
- Construction Docs
- Bidding/Award of Hmong Plaza & Pavilion Landscape
- Construction

PROJECT CONTACT: Brett.Hussong@ci.stpaul.mn.us
PROJECT WEBSITE: www.stpaul.gov/phalenchinagarden

THANK YOU!

PROJECT CONTACT: Brett.Hussong@ci.stpaul.mn.us

PROJECT WEBSITE: www.stpaul.gov/phalenchinagarden