



**ST. PAUL-CHANGSHA  
CHINA FRIENDSHIP GARDEN  
SISTER-CITIES SINCE 1988  
DAC MEETING #5 - JAN 18, 2022**

**PHALEN REGIONAL PARK  
ST. PAUL - CHANGSHA CHINA FRIENDSHIP GARDEN**

JANUARY 2022



MN CHINA FRIENDSHIP  
GARDEN SOCIETY



HUNAN JIANKE  
LANDSCAPE CO. LTD.



PAUL PARKS AND RECREATION  
DESIGN AND CONSTRUCTION



# DAC #5 MEETING AGENDA

**6:30 INTRODUCTIONS/ONLINE BIOS**

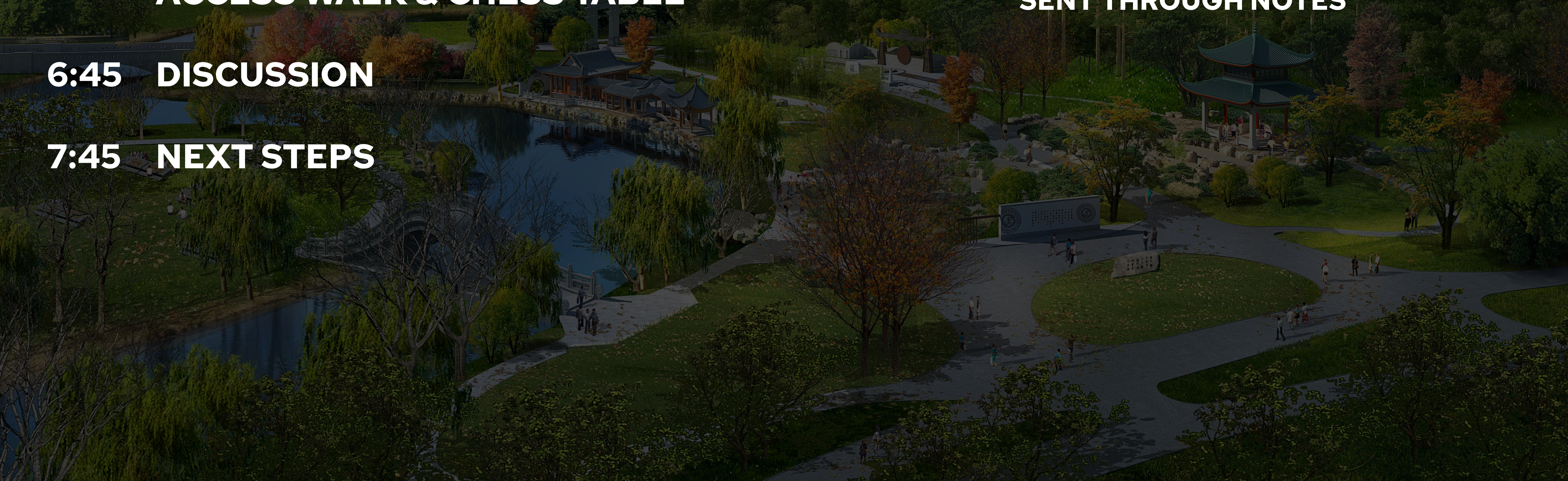
**6:35 DESIGN ADVISORY COMMITTEE ROLE  
CITY DESIGN PROCESS  
PROJECT BACKGROUND/ MEETING RECAP  
DONOR WALL/MOON GATE REVISED LAYOUT  
MOON BRIDGE REVISED LAYOUT  
ACCESS WALK & CHESS TABLE**

**6:45 DISCUSSION**

**7:45 NEXT STEPS**

## MEETING TIPS

- PLEASE KEEP YOURSELF ON MUTE WHEN NOT TALKING
- IF YOU HAVE QUESTIONS, PLEASE USE THE CHAT OR RAISE "VIRTUAL" HAND
- MEETING RECORDING, ATTENDEES LIST, AND CHAT CONTENT WILL BE SENT THROUGH NOTES







## ROLE OF DESIGN ADVISORY COMMITTEE (DAC)

1. Advisory role to Parks and Recreation
2. Input balanced with larger citywide needs, Parks and Rec Systems & Vision Plan
3. Committee members are representing larger interest group. City website will become central source of information allowing committee members to network and share information.
4. Decisions by consensus, not voting
5. Work respectfully in group setting
6. Understand and balance needs of all park users
7. Join Committee with open-mind and willingness to listen and hear views or ideas
8. Attend at least 6 (virtual) meetings from October 2021 to January 2022.
9. Help guide the design and layout for Phase II elements:
 




Patterns	Colors	Location
Forms	Materials	
Space	Cultural Stories	
10. Provide plan review of concepts for public meetings materials

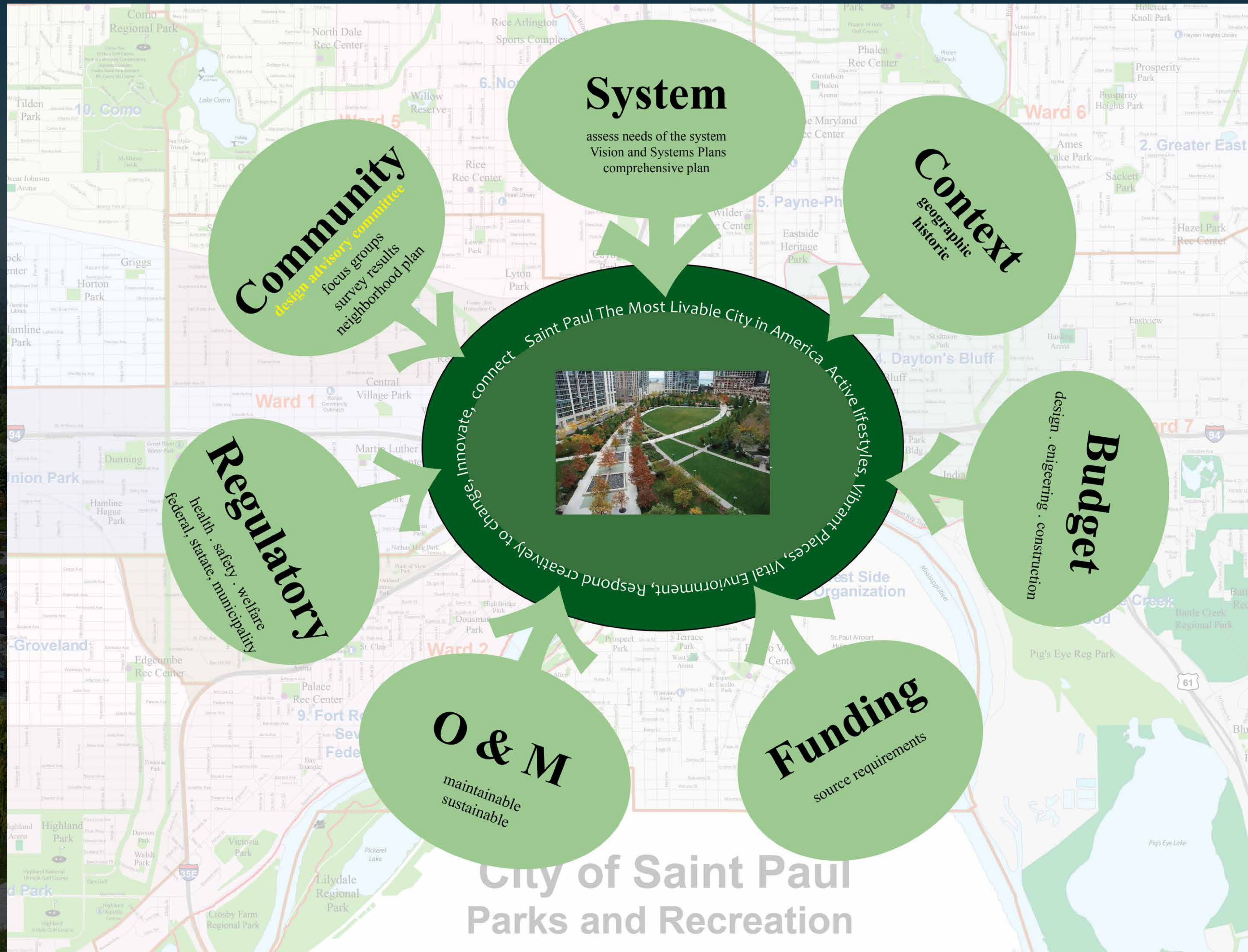


# SYSTEM PLAN VISION

Helping make Saint Paul the most Livable City in America by facilitating the creation of ...

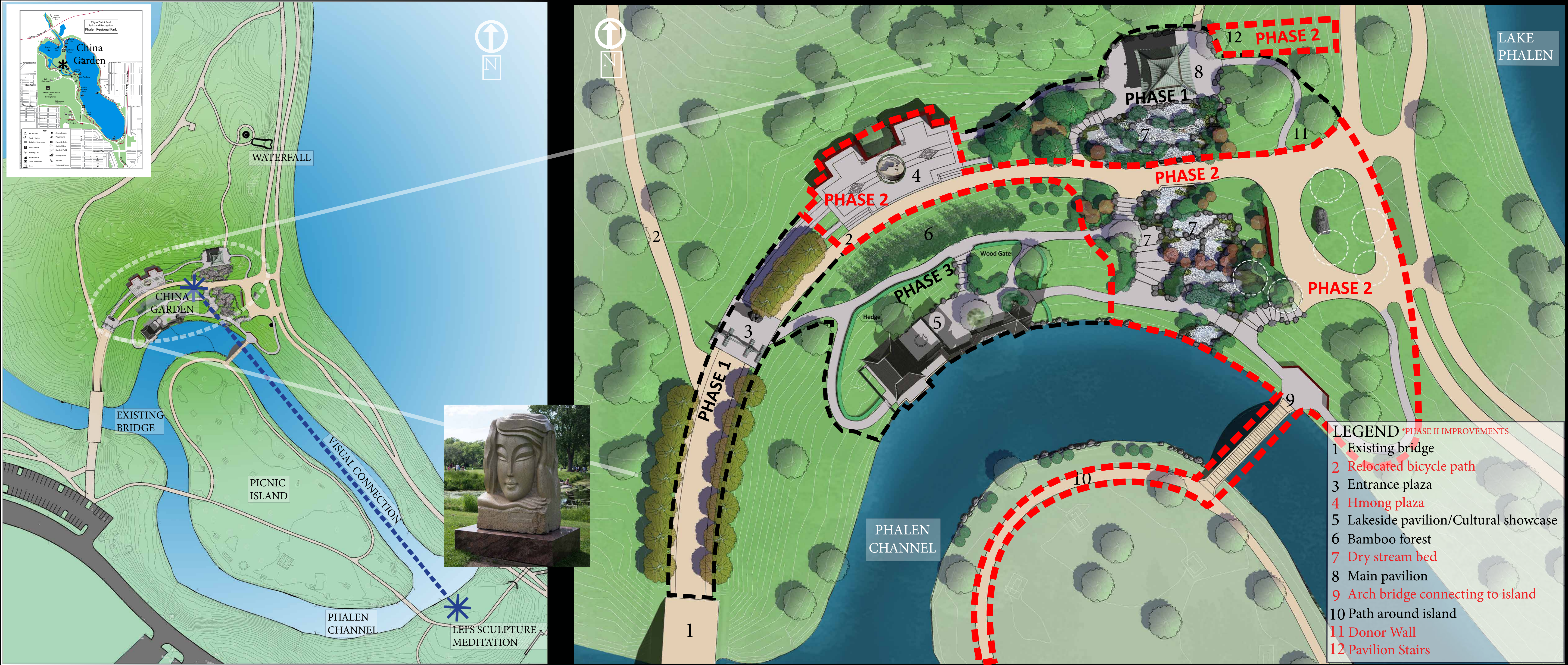
OUR GOALS

-  **ACTIVE LIFESTYLES**
  -  **VIBRANT PLACES**
  -  **A VITAL ENVIRONMENT**
- through parks and recreation that...
-  **RESPONDS CREATIVELY TO CHANGE**
  -  **INNOVATES WITH EVERY DECISION**
  -  **CONNECTS THE ENTIRE CITY**





# GARDEN LOCATION AND DESIGN ORGANIZATION



**PHASE II FUNDING:**  
**ARTS AND CULTURAL HERITAGE FUND LEGACY & STATE BONDING**

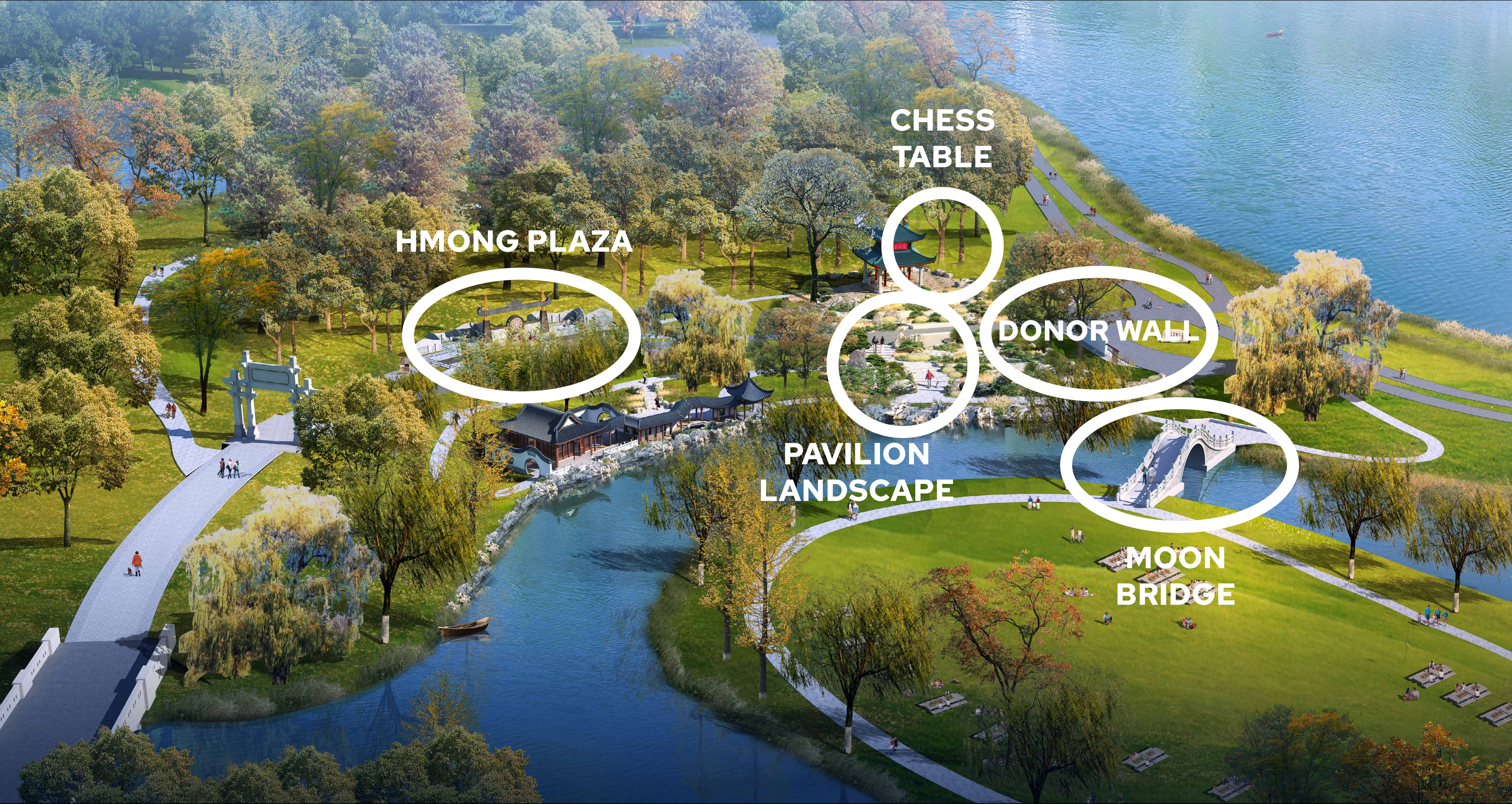
**PHASE II PROJECT GOALS:**  
**COMMUNITY ENGAGEMENT**  
**PHASE II DESIGN**  
**PHASE II CONSTRUCTION DOCUMENTS**  
**COST ESTIMATING TO LAUNCH CAPITAL CAMPAIGN**  
**CONSTRUCTION OF HMONG PLAZA**  
**CONSTRUCTION OF PAVILION LANDSCAPE TO PHALEN CHANNEL**

**MEETING PURPOSE:**  
**1. REVIEW REVISED LAYOUT OF HMONG PLAZA TO UNDERSTAND FEASIBILITY OF DESIGN.**

**\*FUTURE DESIGN DETAILS (PATTERNS, MATERIALS, STORIES) WILL BE COMPLETED BY ARTIST(S), LANDSCAPE ARCHITECTS, AND ENGINEERS FOR REVIEW BY ADVISORY COMMITTEE**



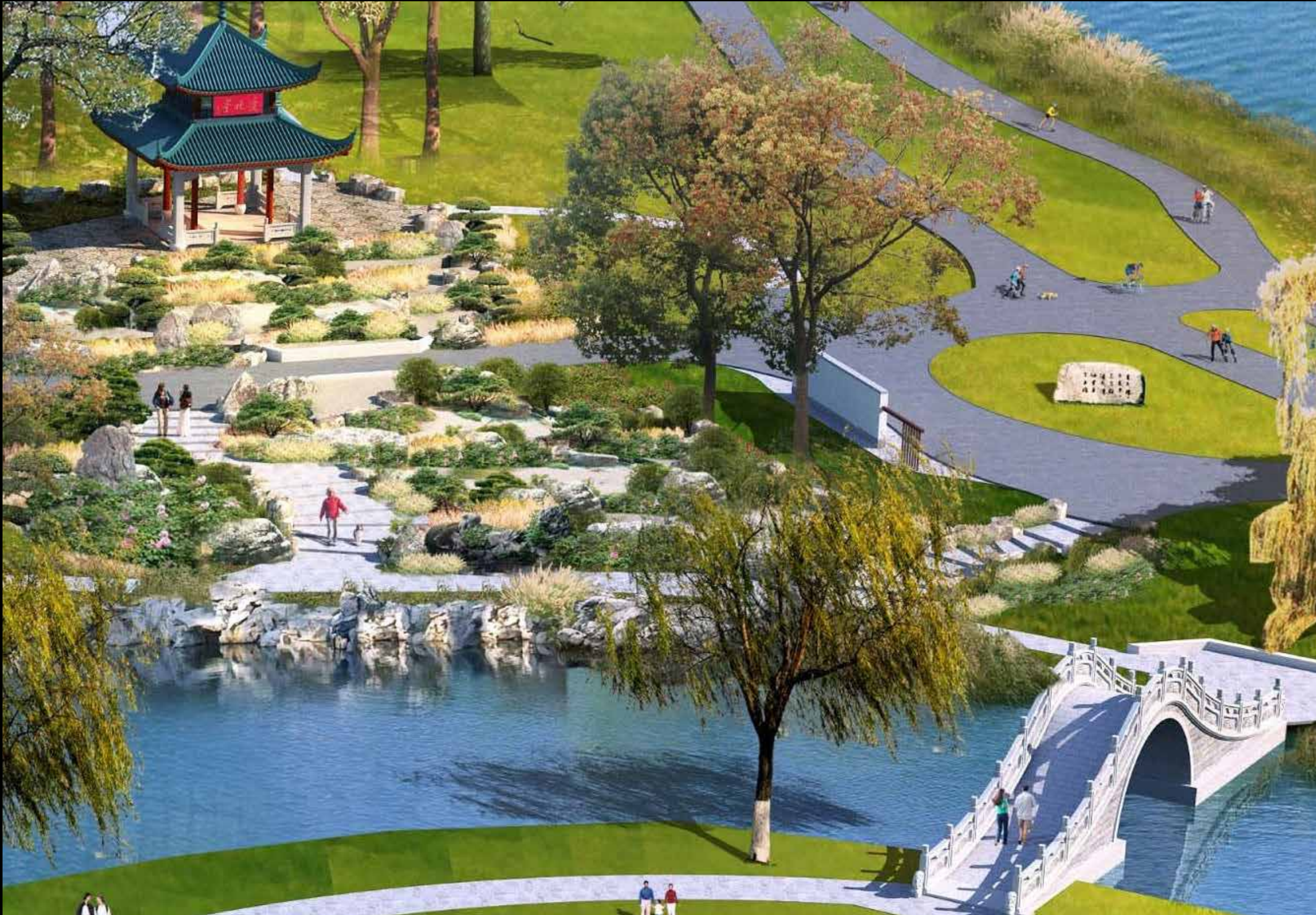
# BIRD'S EYE VIEW OF GARDEN - VIEW TO THE NORTH (2017)



The five elements of Chinese Garden design (vegetation, artistic rocks, water, scenic pathways, and architecture)



# PAVILION LANDSCAPE



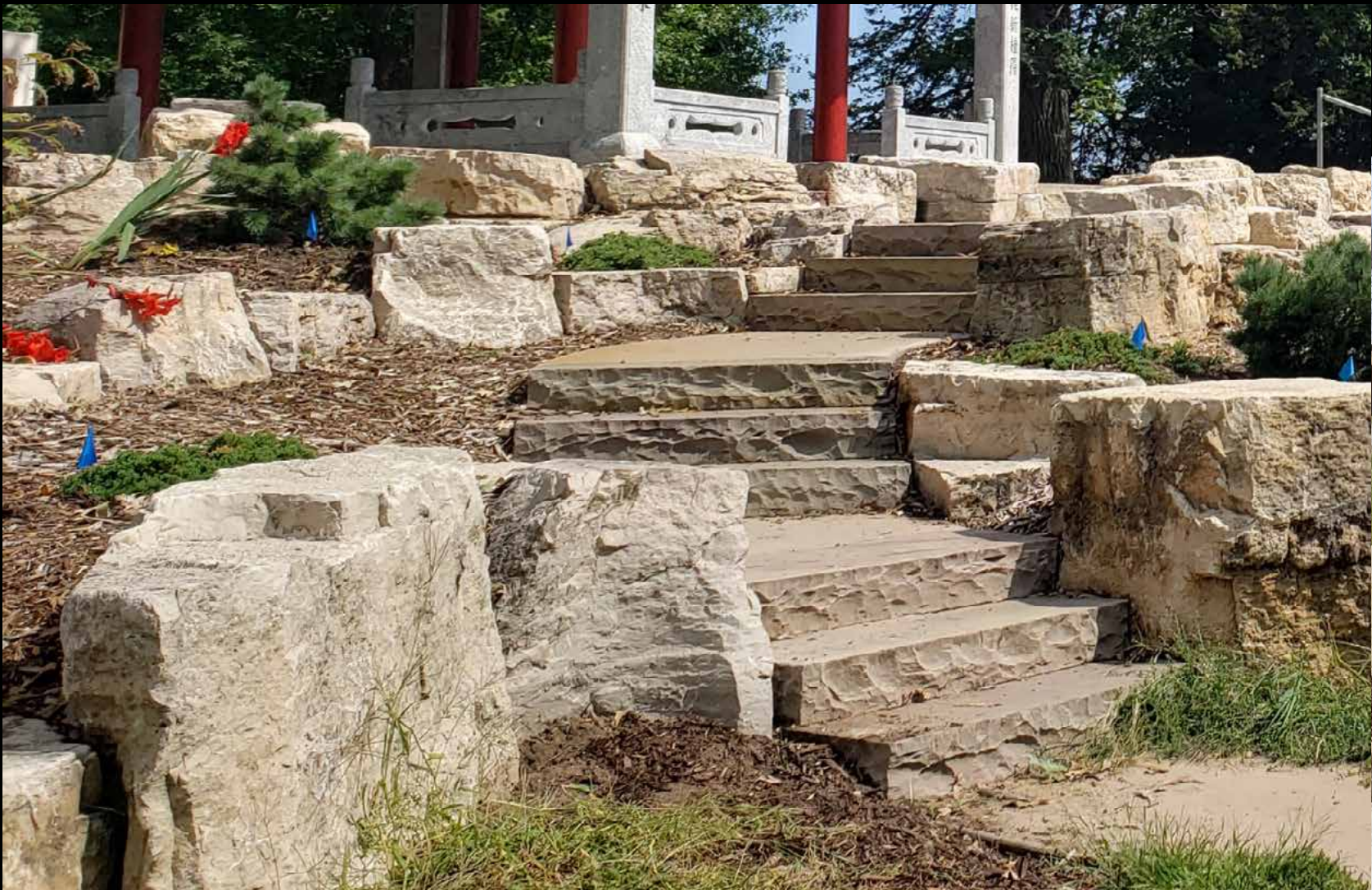
2017 MASTER PLAN



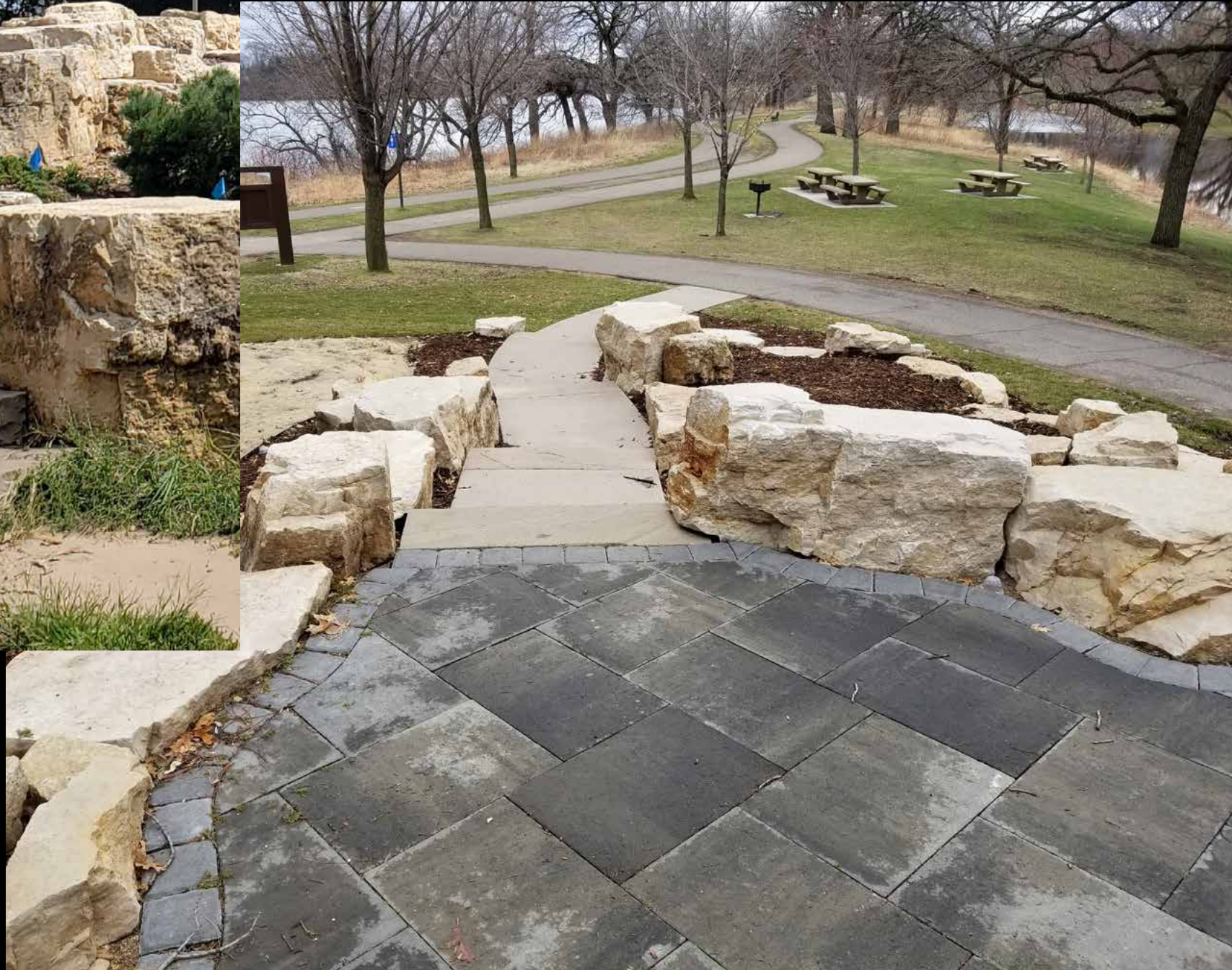
DRY STREAM BED AND BRIDGE



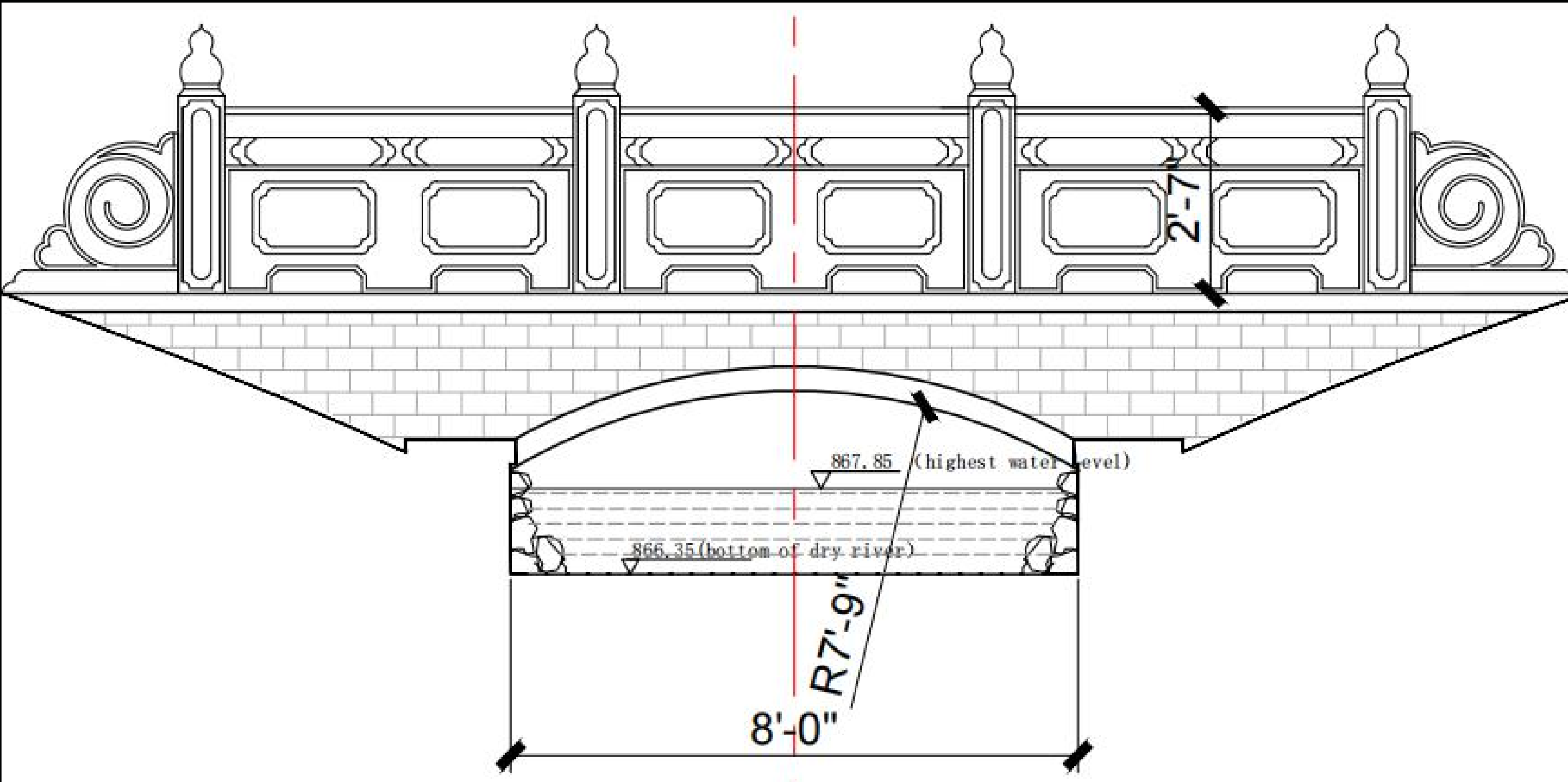
# PAVILION LANDSCAPE - CHARACTERISTICS



EXISTING PAVILION STAIRS



EXISTING PAVILION PLAZA



BRIDGE ELEVATION



RIVER ROCK



GREY SLATE



UNIFORM ROUND STONES



VERTICAL STONES



# PAVILION LANDSCAPE QUESTIONS

## STREAM BED

- DRY STREAM BED OR
- RECIRCULATING WATER?
- STONE TYPE?
- VANDALISM ISSUES WITH STONES/ROCKS

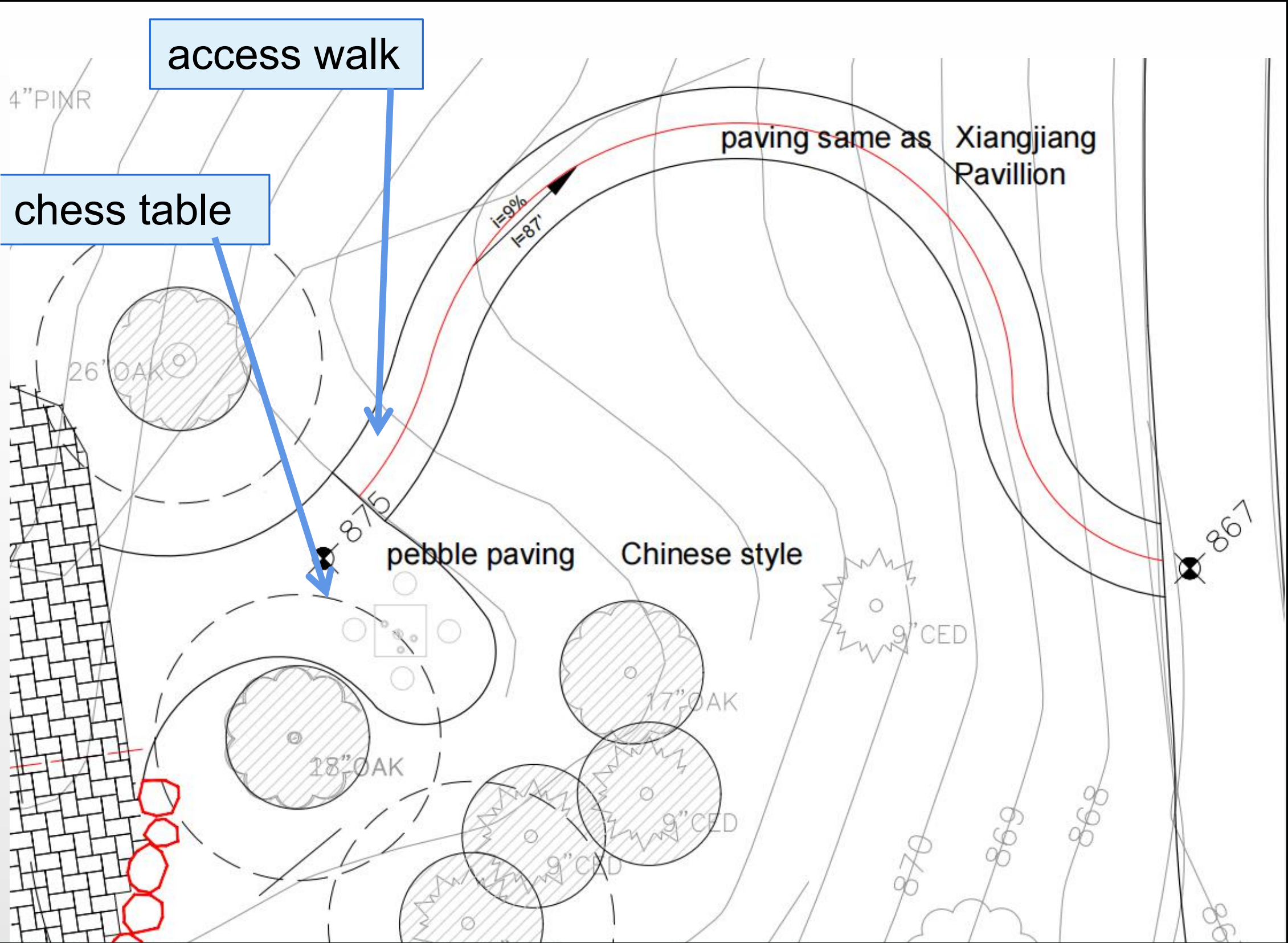
## WALKWAY/ STAIRS

- EXISTING PAVILION USES NATURAL STONE STEPS WITH CONCRETE WALKWAYS
- DESIRE FOR SEATING AREAS WITHIN LANDSCAPE (BENCHES)





# PAVILION WALKWAY & CHESS TABLE



PLAN VIEW

**RECOMMENDATIONS**  
**USE PLANT MATERIAL**  
**FOR HIDE/REVEAL**

**MATERIALS**  
**NATURAL STONE STEPS**  
**CONCRETE WAKWAYS**  
**GRAY PAVERS**



VIEW LOOKING WEST



EXISTING CONDITION



# RECAP OF DONOR WALL AND MOON GATE

## WHAT WE HEARD:

- DONOR WALL SHOULD BE SEPARATED FROM MOON GATE. CONSIDER RELOCATING DONOR WALL TO THE TEMPORARY DONOR WALL LOCATION.
- CONSIDER LIGHT (WHITE) GRANITE PANELS WITH RED LETTERS. DARK GRANITE PANELS SEEM HEAVY AND RESEMBLES A MONUMENT.
- INTERPRETIVE INFO SHOULD BE SEPARATE FROM DONOR WALL. INCLUDE ELECTED/PUBLIC OFFICIALS AND THE DESIGN ADVISORY COMMITTEE ON DONOR WALL.
- MOON GATE AND WALL SHOULD BE MORE TRANSPARENT. CONSIDER LEAKY WINDOW(S) WITH HMONG EMBROIDERY PATTERNS OR FREE-STANDING WALL(S) OR SHRUBS TO RETAIN FEELING OF ENCLOSURE BETWEEN DRY STREAM BED YET ALLOWING FOR SOME TRANSPARENCY.
- DAC SUPPORTS TILE COVERED ROOF.



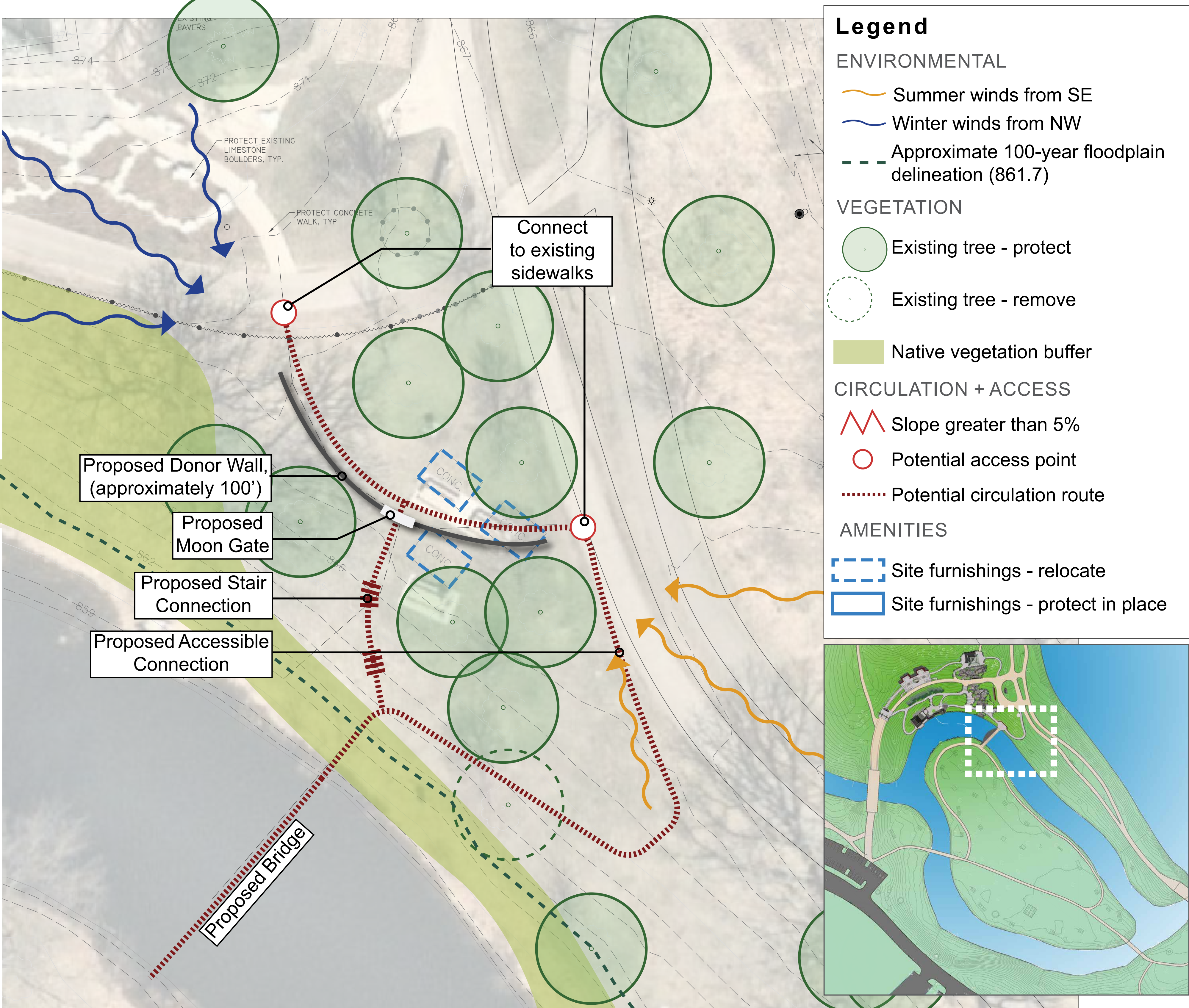
# DONOR WALL LOCATION



EXISTING SITE



TEMPORARY DONOR WALL



ATION DEPARTMENT  
RUCTION DIVISION

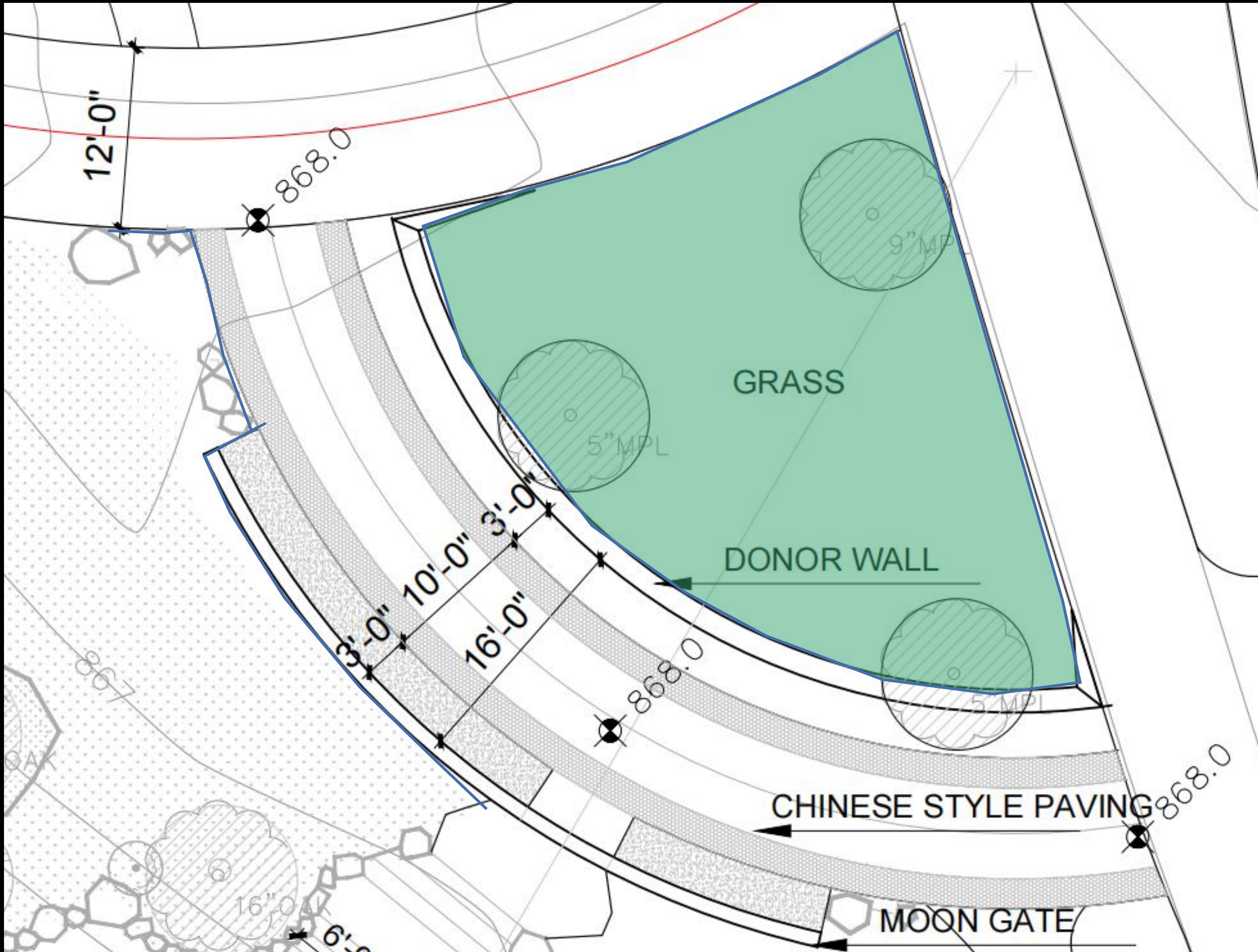
## DONOR WALL AND MOON BRIDGE



# DONOR WALL/MOON GATE REDESIGN



CONCEPTUAL RENDERING - LOOKING WEST



SITE PLAN



CONCEPTUAL RENDERING - LOOKING SOUTH



WINDOW EXAMPLES





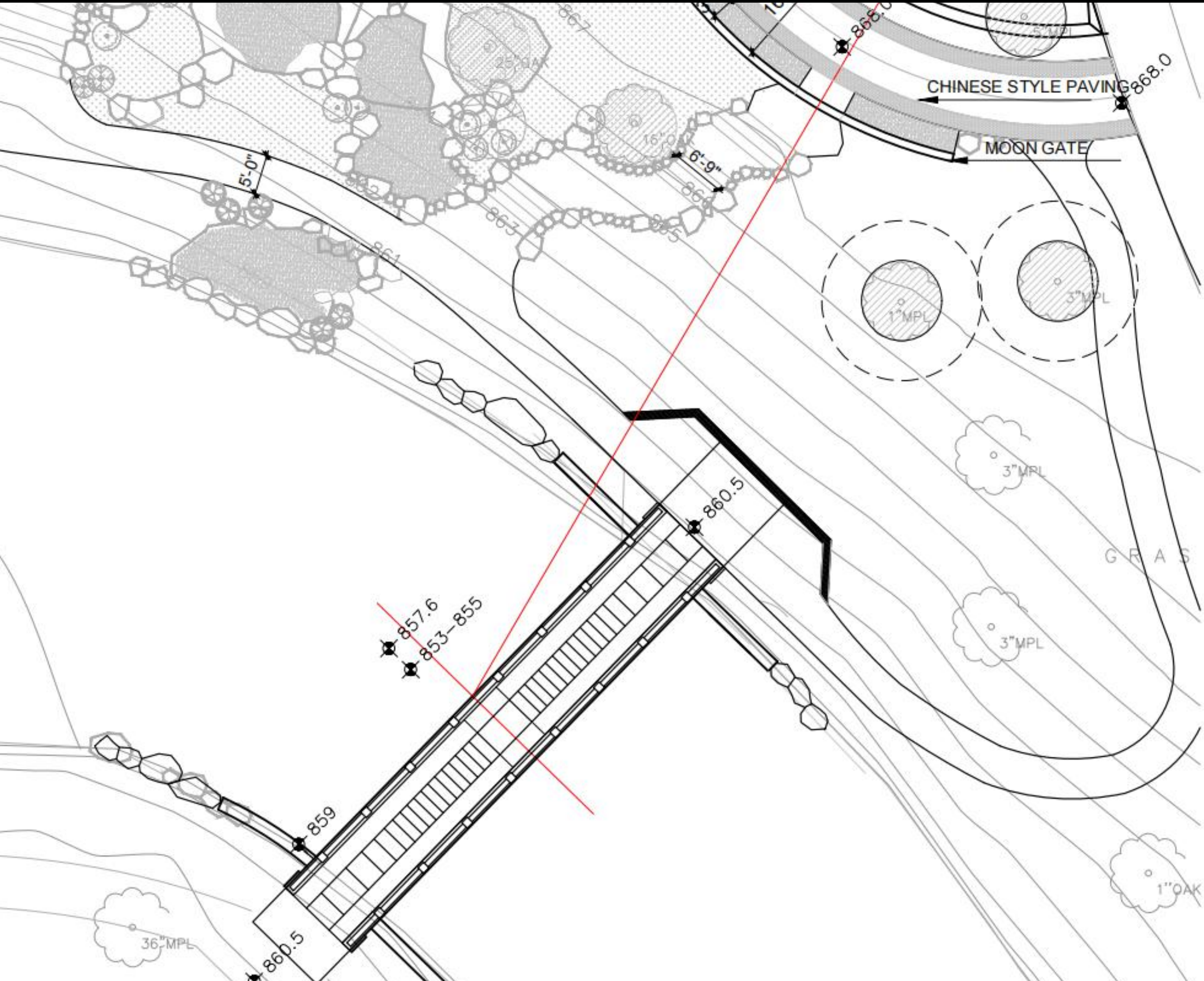
# RECAP OF MOON BRIDGE

## WHAT WE HEARD:

- PRIMARY PURPOSE: AESTHETICS
- SECONDARY PURPOSE: FUNCTION
- PREFER STAIRS ON BRIDGE  
SINCE THERE ARE TWO EXISTING ACCESSIBLE BRIDGES TO ISLAND  
SAFER DURING WINTER CONDITIONS COMPARED TO
- UPDATE THE MOON BRIDGE RENDERING:  
REVISE SCALE  
SHOW AN OPTION WITH STAIRS
- CONSIDER AN ACCESSIBLE BRIDGE (5% MAX.) WITH NO STAIRS
- CONSIDER 3 SMALL ARCHWAYS



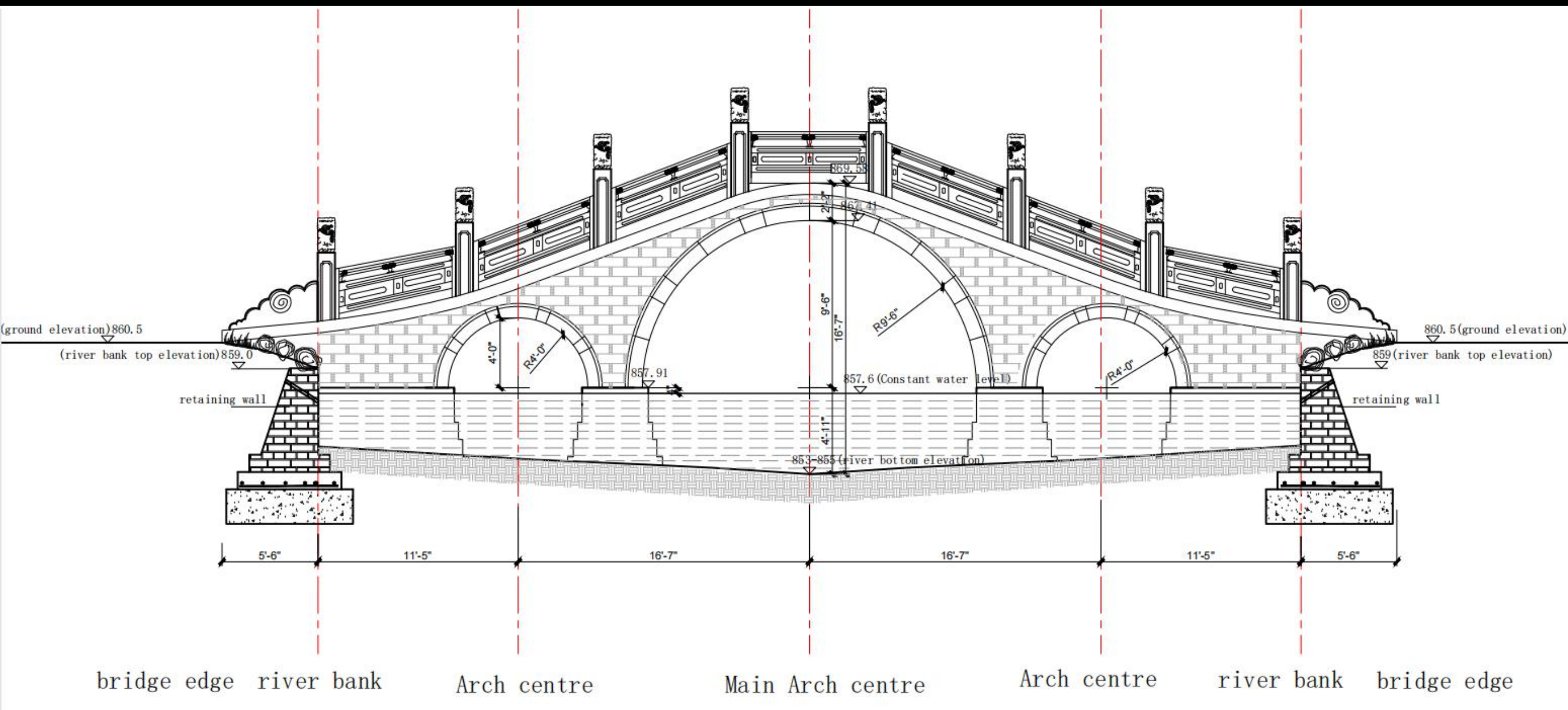
# MOON BRIDGE REDESIGN



SITE PLAN



CONCEPTUAL RENDERING



ELEVATION PLAN



CONCEPTUAL RENDERING



# NEXT STEPS



- Preliminary Design  
DAC #1: 10/18  
DAC #2: 11/10  
DAC #3: 11/17 (Virtual)
- Schematic Design  
DAC #4: 01/11 (Virtual)  
**DAC #5: 01/18 (Virtual)**  
Public Review: Feb 2022
- Design Development  
DAC #6: TBD  
Public Review: TBD

- Construction Docs
- Bidding and Award  
Hmong Plaza &  
Pavilion Landscape

- Construction

**PROJECT CONTACT:** [Brett.Hussong@ci.stpaul.mn.us](mailto:Brett.Hussong@ci.stpaul.mn.us)  
**PROJECT WEBSITE:** [www.stpaul.gov/phalenchinagarden](http://www.stpaul.gov/phalenchinagarden)



THANK YOU!

