



STPAUL.GOV

CITY OF SAINT PAUL PUBLIC WORKS
May 18, 2022

Curtrice Street Reconstruction



Agenda

- Project Scope and Schedule
- Proposed Design for Curtice Street
- Construction Improvements
- Utility Work
- Living Through a Construction Project
- Project Contact Information

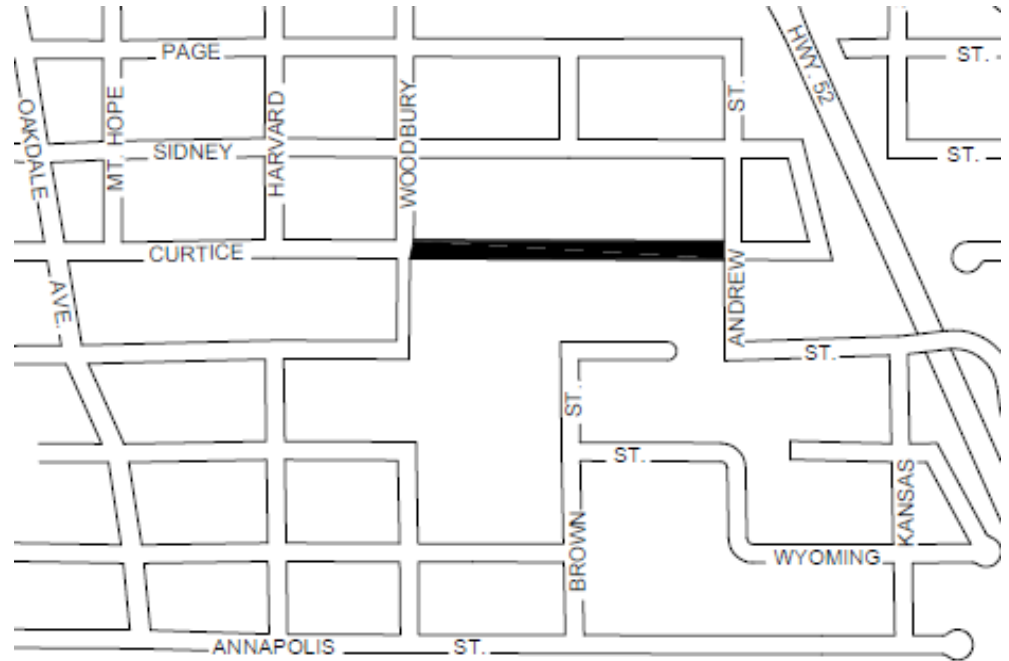


Project Scope

Curtice Street between
Woodbury Street and
Andrew Street

Construction to begin
August of 2022

Completion by
November 2022





Curtice Street Reconstruction Improvements

- New concrete curb and gutter
- New pavement
- Sidewalk replacement on the north side of the street
- ADA-compliant pedestrian ramps
- Utility upgrades including new watermain, storm and sanitary sewer mains.
- Drainage issues addressed



Proposed Design for Curtice Street

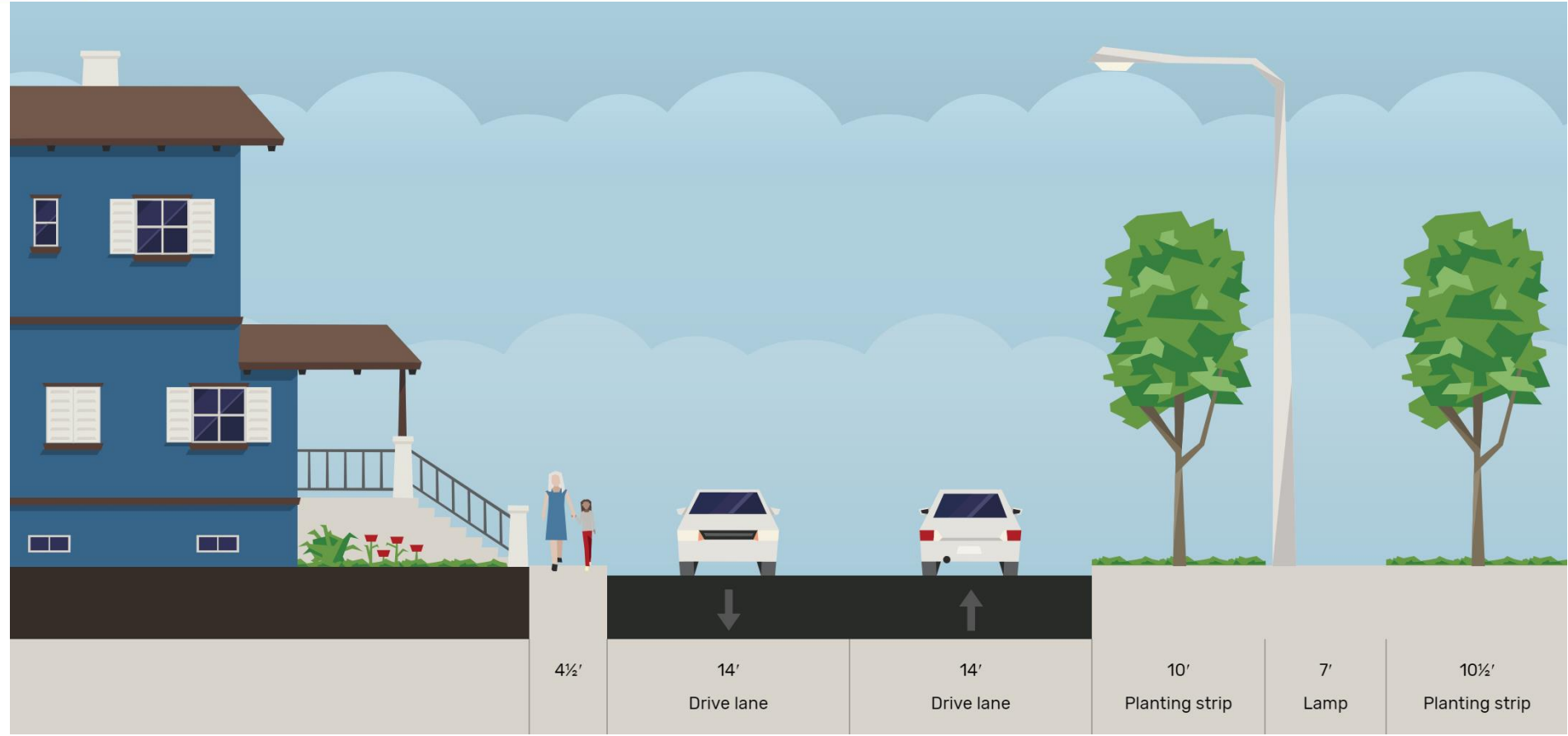


SAINT PAUL
PUBLIC WORKS

STPAUL.GOV

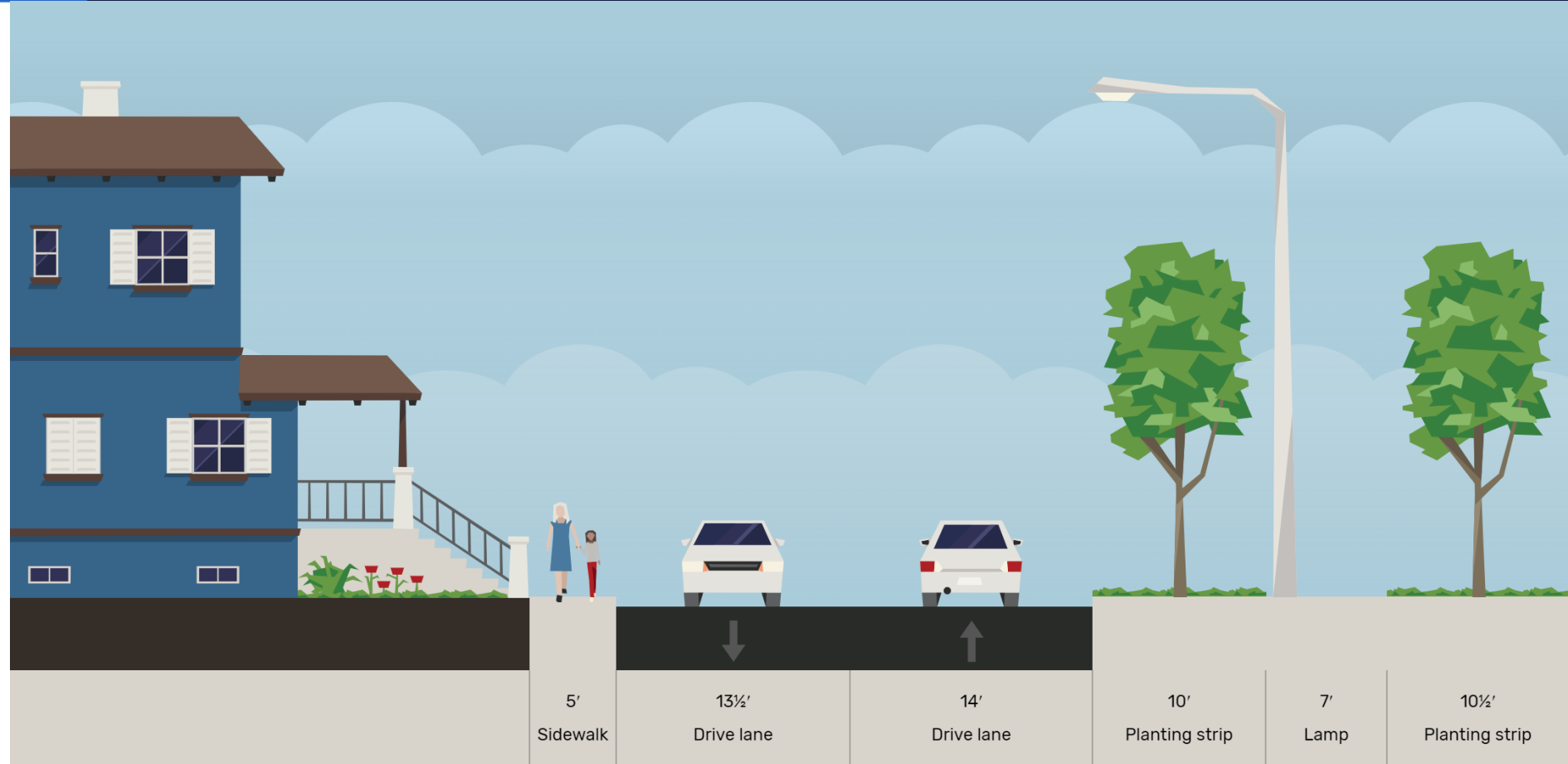


Existing Curtice Street – Woodbury to Andrew – 60' ROW





Proposed Curtice Street – Woodbury to Andrew – 60 ROW



Construction Improvements



SAINT PAUL
PUBLIC WORKS

STPAUL.GOV



Concrete Curb and Gutter with Catch Basins

Before



After





Bituminous Pavement

Before



After





Sidewalk Replacement

- 5-foot sidewalk on north side of the street to be installed at property line.





ADA-Compliant Pedestrian Ramps

Fan Ramp



Directional Ramp



Curtice Street Utility Work



SAINT PAUL
PUBLIC WORKS

STPAUL.GOV



Private Utilities

- Private utilities, such as Xcel and communication companies will be making upgrades to their facilities.

Xcel Gas will be upgrading the gas mains starting in mid-May to be done before the Public Works contractor begins.

Telecommunications companies may also make upgrades prior to Public Works Construction



Saint Paul Sewer Utility



SAINT PAUL
PUBLIC WORKS

STPAUL.GOV

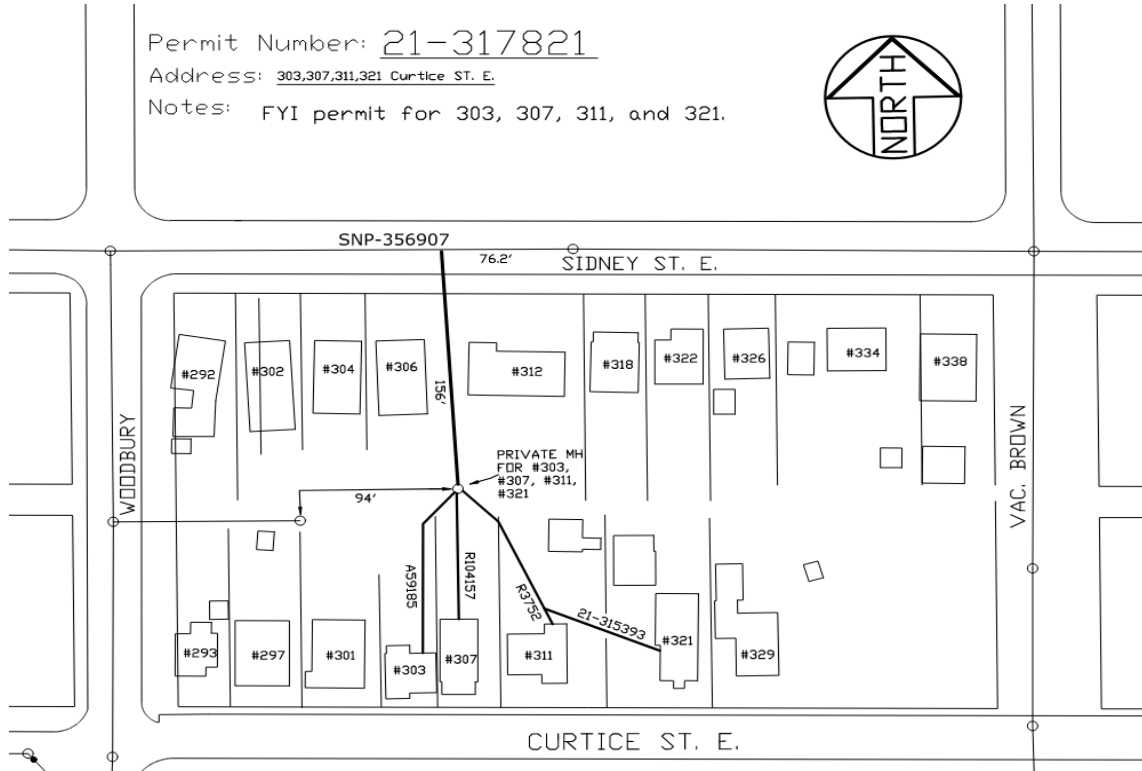


Sanitary Sewer Services (Private) – Existing Locations

Permit Number: 21-317821

Address: 303,307,311,321 Curtice St. E.

Notes: FYI permit for 303, 307, 311, and 321.



No public sanitary sewer mainline in Curtice.

303, 307, 311, and 321 Curtice share a private sanitary sewer service connection to Sidney.

Curtice Project will construct new public sanitary sewer mainline in Curtice (with service stubs) for properties to have opportunity to connect to.

Saint Paul Regional Water Service



SAINT PAUL
PUBLIC WORKS

STPAUL.GOV



Water Main Replacement



- Water main is approx. 8' feet deep
- Existing water main is a 6" diameter cast iron pipe.
- Main will be replaced as 8" diameter ductile iron pipe.
- Installation by PW Contractor, SPRWS providing temporary water
- Water main must pass a series of bacterial tests, pressure tests, and conductivity tests prior to being put in service



Temporary Water Mains



- 2" PVC pipe laid on edge of sidewalk
- Fully bacterially tested prior to hook-up
- Will become quite warm during the summer
- Water is provided at no cost when connected to temporary water



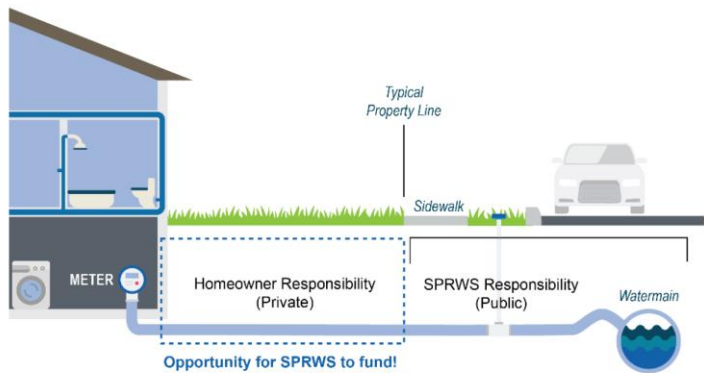
Temporary Water Connection



- Back fed through outside hose spigot through the use of a grey potable water rated hose
- A wye is installed to allow use of garden hose while connected
- Notification of temporary water will be posted on front door
- Temporary water crew will need to access the water meter inside building twice, once during install and once for the take down



Water Service Connection



- Water services are re-connected to the main once the watermain is fully tested and live
- Most existing copper services are reconnected with only excavation at the watermain
- All lead services in the ROW are replaced with copper pipe at SPRWS cost
- Lead services in private property can be replaced by SPRWS contractor at no cost to homeowner





Contact Information for Saint Paul Regional Water Service

Tom Jauquet

Damage Prevention and Inspections Supervisor

Cell: 651-706.2030

tom.jauquet@ci.stpaul.mn.us

SPRWS Engineering Service Desk

651-266-6270

Living Through a Construction Project



SAINT PAUL
PUBLIC WORKS

STPAUL.GOV



Living Through Construction

- What to expect:
 - Noise
 - Dust
 - Mud
 - Limited Access
 - Inconvenience





Living Through Construction

- Your street will be dug up numerous times
- The work is done in layers and often by different crews doing different types of work
- Plan on 3-4 months of disruption
- Residents and emergency vehicle access will be maintained at all times



Living Through Construction

- All of the construction is done by private construction companies
- Most road work is weather dependent, and rain *will* delay work
- Contractors work 5 to 6 days a week from 7:00 a.m. until 7:00 p.m.
- The City of Saint Paul will have an onsite representative (project inspector) to inspect the contractor's work



Road Closures



Road Closed to Thru Traffic

You can get to your house, but you cannot get all the way through. You will eventually come to a **Road Closed** sign.



Road Closed

Do Not Enter!

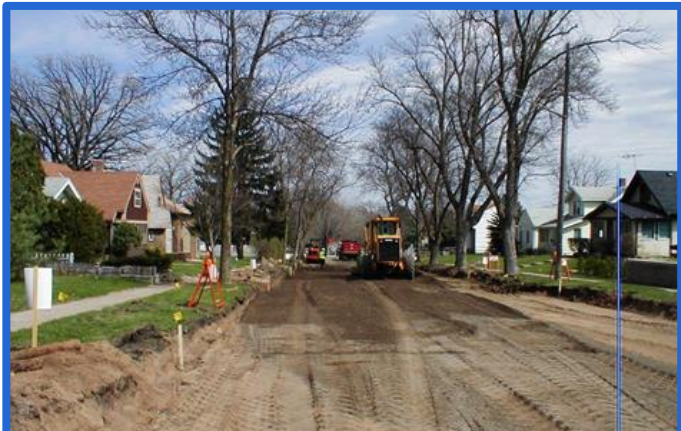


Living Through Construction

- You will receive a letter prior to the start of construction – keep this for names and contact numbers
- A flyer will be handed out a week before construction starts on your block – check front doors for flyers
- Onsite Public Works Inspector, Bill Vos – the project inspector should be your **first call** with questions or concerns
- Weekly updates will be posted to the City's website www.stpaul.gov/curticestreet



Living Through Construction



Assessments



SAINT PAUL
PUBLIC WORKS

STPAUL.GOV



General Project Assessment Information

- Street reconstruction projects are funded by:
 - City Street Reconstruction Bonds (SRB)
 - Assessments to abutting property owners
- The estimated assessment rate is anticipated to be \$91.96 for paving and lighting. It has been determined that the existing street lighting is sufficient, so the proposed rate may be reduced to remove the lighting assessment.
- Property owners are assessed after the construction project is complete
- View information about and pay assessments at www.stpaul.gov/assessments



Contacts for Curtice Street Reconstruction

Project Manager	Barb Mundahl	651-266-6112
Public Works On-site Inspector	Bill Vos	651-266-6113
Public Works Street Lighting	General Line	651-266-6200
SPRWS (Water)	Service Desk	651-266-6270
Public Works Sewers	Utility Permit Desk	651-266-6234
Real Estate Section - Assessments	General Line	651-266-8858