



ST. PAUL-CHANGSHA CHINA FRIENDSHIP GARDEN

SISTER-CITIES SINCE 1988

DESIGN ADVISORY COMMITTEE (DAC) # 7 - JUNE 13, 2022

DESIGN ADVISORY COMMITTEE MTG #7

6:30 WELCOME/INTRODUCTIONS

**6:35 DESIGN ADVISORY COMMITTEE (DAC) ROLE
PROJECT BACKGROUND
HMONG PLAZA**

6:45 NEXT STEPS /DISCUSSION

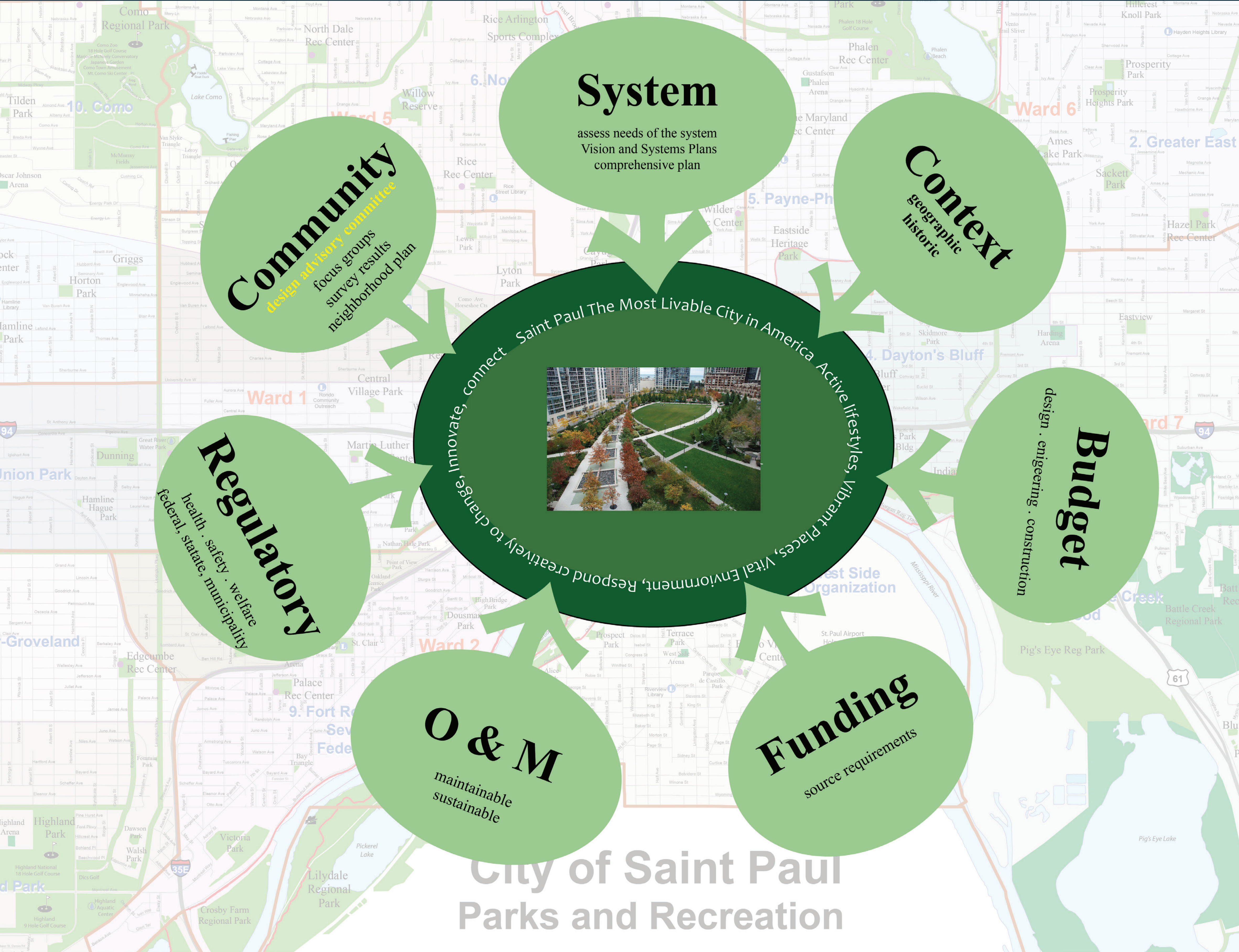
7:30 GARDEN TOUR/REVIEW

MEETING PURPOSE:

- 1. DAC ROLE AND RESPONSIBILITIES**
- 2. HMONG PLAZA WITH GRASS OVERFLOW FOR LARGER GROUPS**

NOTE: THE CITY HAS RELEASED A STATEMENT ABOUT THE ART STONE DISCUSSION. IN THE MEANTIME, WE ARE MOVING FORWARD WITH PHASE II PLANNING BECUASE OF FUNDING DEADLINES. THE ART STONES ARE IN A TEMPORARY LOCATION AND A PERMANENT LOCATION WILL BE DETERMINED THROUGH THIS PROCESS.

SYSTEM PLAN VISION



DESIGN ADVISORY COMMITTEE PROCESS

PARKS & RECREATION PHASE II PROCESS

DEVELOPED AS PART OF ENGAGEMENT PROCESS



DESIGN ADVISORY COMMITTEE (DAC)

Role: Bring ideas to the DAC meetings, communicate results of these meetings to the greater community, decisions by consensus.

INCLUDES:

WARD 1 & WARD 6

MCFGs BOARD

HMONG ADVISORY COMMITTEE (HAC) REPRESENTATIVES

CHINESE ADVISORY COMMITTEE (CAC) REPRESENTATIVES

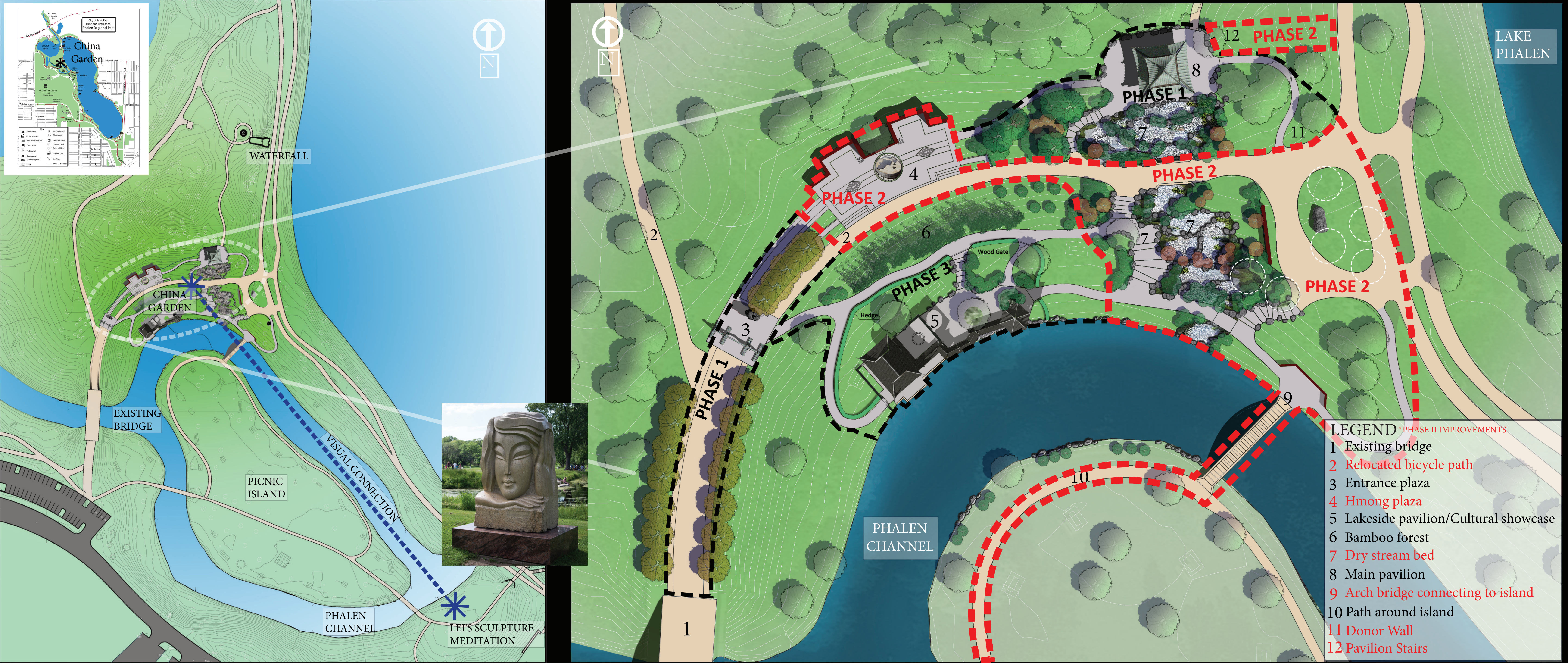
RESIDENTS OF PAYNE PHALEN PLANNING DISTRICT 5

ARTISTS & DESIGN PROFESSIONALS

ST PAUL YOUTH COMMISSION

PARKS & REC COMMISSION

GARDEN LOCATION AND DESIGN ORGANIZATION

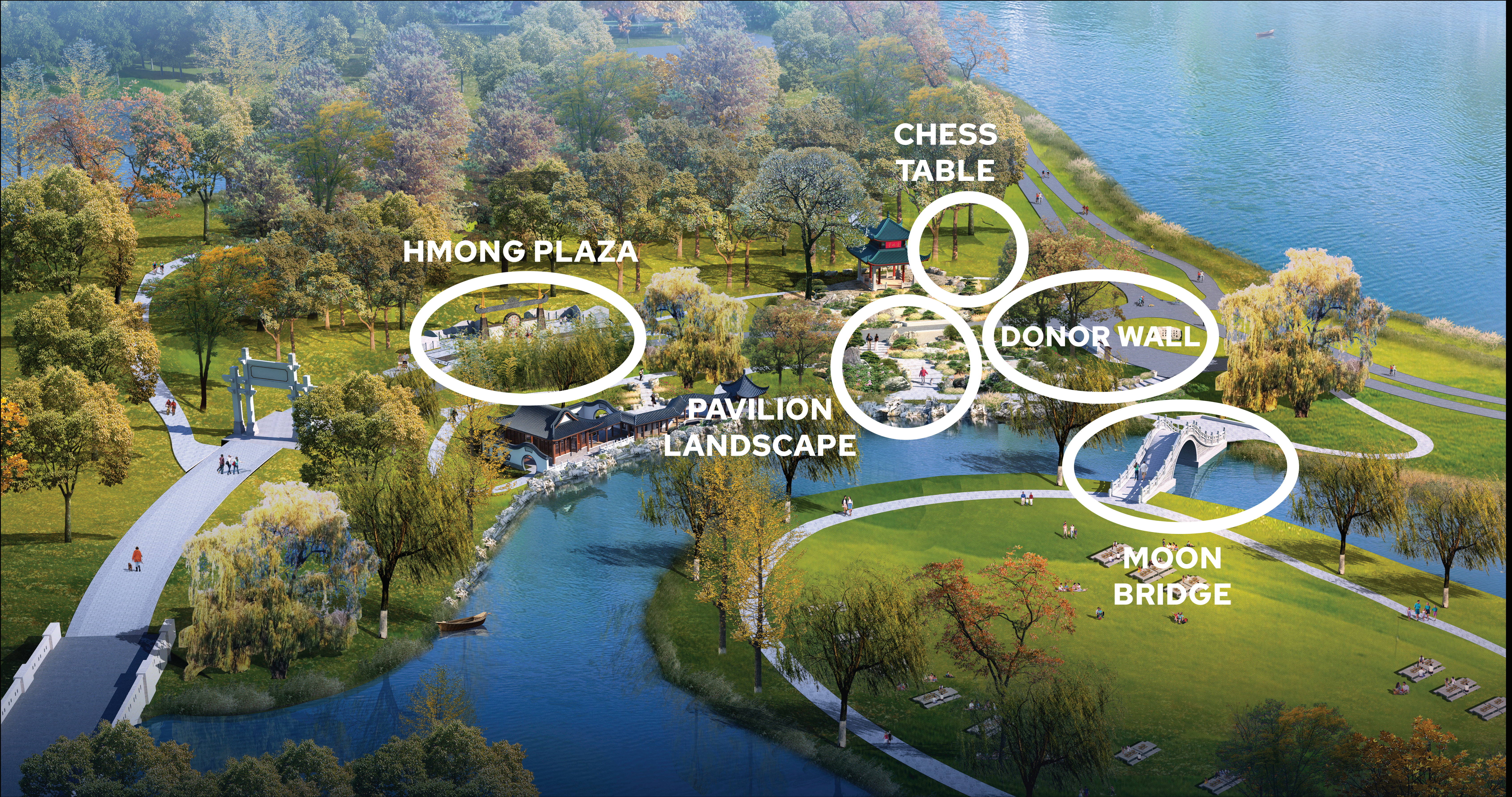


PHASE II FUNDING:
ARTS AND CULTURAL HERITAGE FUND LEGACY (DEADLINE JUNE 2023) & STATE BONDING (TBD)

PHASE II PROJECT GOALS:

OCT - JUNE	PHASE II DESIGN & COMMUNITY ENGAGEMENT
JUNE - SEPT	PHASE II CONSTRUCTION DOCUMENTS/BIDDING
OCT- NOV	CONSTRUCTION OF HMONG PLAZA & PAVILION LANDSCAPE TO CHANNEL
SPRING '23	SUBSTANTIAL COMPLETION
JUNE 2023	FUNDING EXPIRES

SAINT PAUL-CHANGSHA CHINA GARDEN - VIEW TO THE NORTH (2017)



2017 MASTER PLAN BASED UPON CHINESE GARDEN DESIGN PRINCIPLES

PHASE II - HMONG PLAZA PROCESS

2017 MASTER PLAN: REQUEST FOR HMONG PLAZA

WE ARE HERE

PHASE II: PLAZA SIZE AND LOCATION

GOING
HERE

PLAZA CHARACTER & CULTURAL DETAILS

CONSTRUCTION DOCUMENTS

FABRICATION/CONSTRUCTION

HMONG PLAZA DISCUSSION

WHAT WE HEARD:

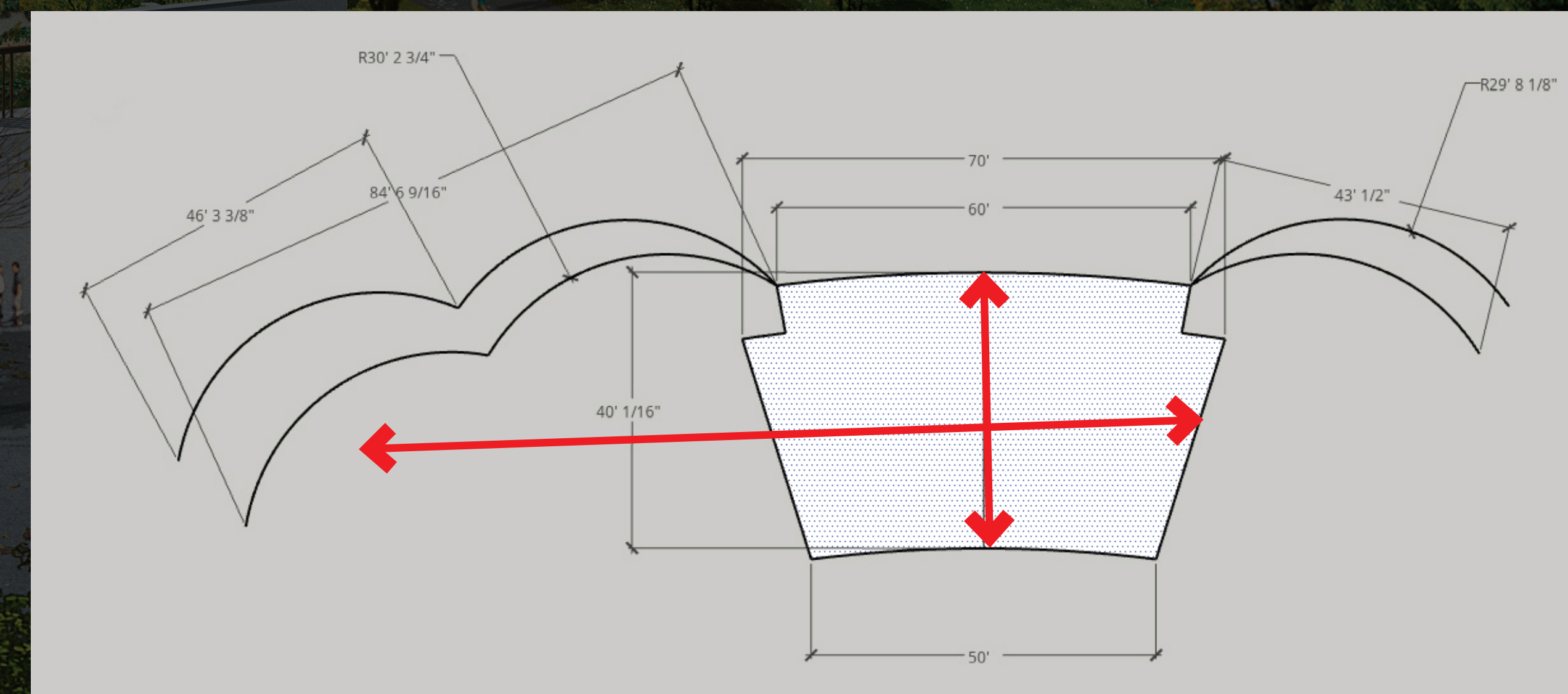
- DESIRE SPACE FOR 200 PEOPLE.
- A 200-PERSON PLAZA WOULD NOT BE IN HARMONY WITH AN INTIMATE CHINESE GARDEN.
- ALTERNATE SITE CONSIDERED: WOULD BE OUTSIDE OF GARDEN - WOULD NOT PROMOTE FRIENDSHIP - FENG SHUI BLESSING AND SITE DEDICATION

COMPROMISE:

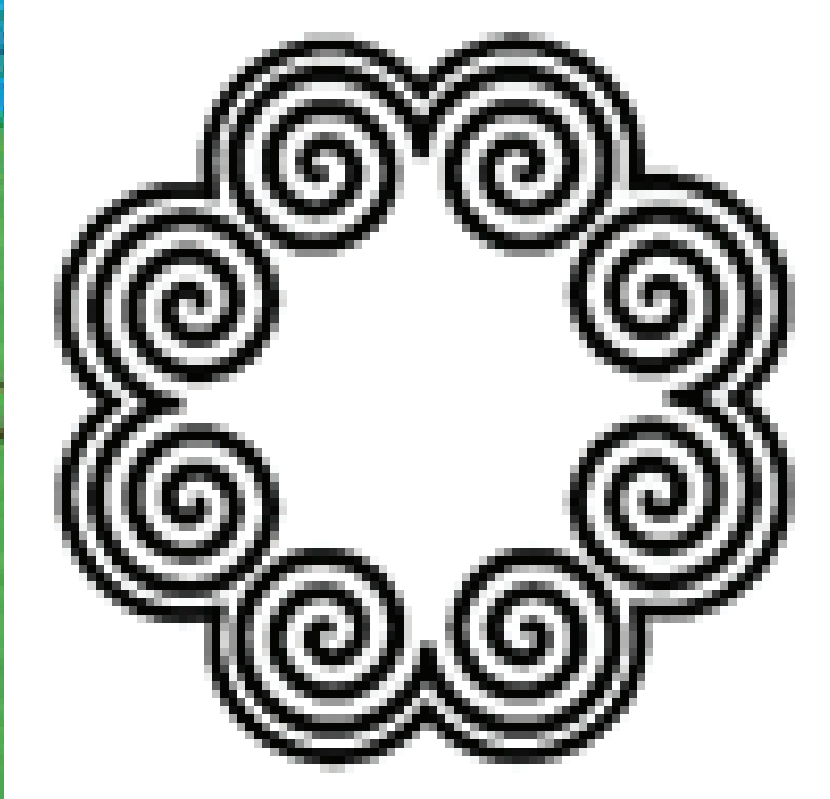
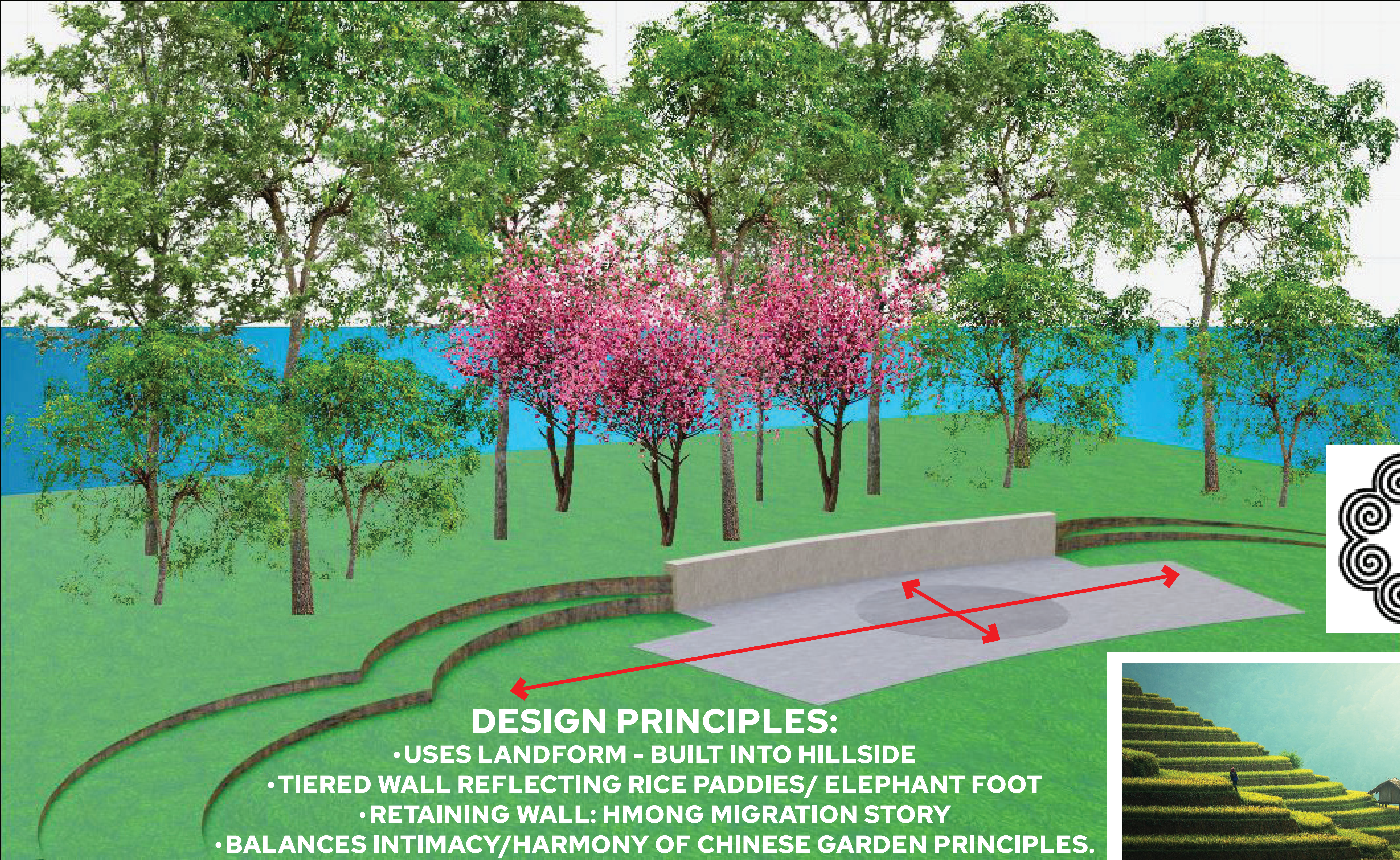
- MAXIMIZE AVAILABLE FOOTPRINT AND INCLUDE FLEXIBLE GRASS SPACE TO ACCOMMODATE LARGE GROUPS AS AN OVERFLOW SPACE.

CONSIDERATIONS:

- CHINESE GARDEN PRINCIPLES: HARMONY/INTIMATE
- 2,400 SF OPEN PLAZA LAYOUT FOR MULTI-USE. MULTIPLE AXIS LAYOUT.
- PROPOSED OVERFLOW (1,600 SF) IS IRRIGATED TURF GRASS. RETAINING WALL REQUIRED FOR FLAT, ADA ACCESSIBLE
- PERMITTING AND TYPICAL FEES REQUIRED FOR LARGE GROUPS. APPROXIMATELY 8-10 RENTALS PER YEAR.



HMONG PLAZA



DESIGN PRINCIPLES:

- USES LANDFORM - BUILT INTO HILLSIDE
- TIERED WALL REFLECTING RICE PADDIES/ ELEPHANT FOOT
- RETAINING WALL: HMONG MIGRATION STORY
- BALANCES INTIMACY/HARMONY OF CHINESE GARDEN PRINCIPLES.

NOTE: IMAGE NOT TO SCALE AND DOES NOT REFLECT EXACT SITE CONDITIONS.



Curved Stepped Terrace Planters

HMONG PLAZA

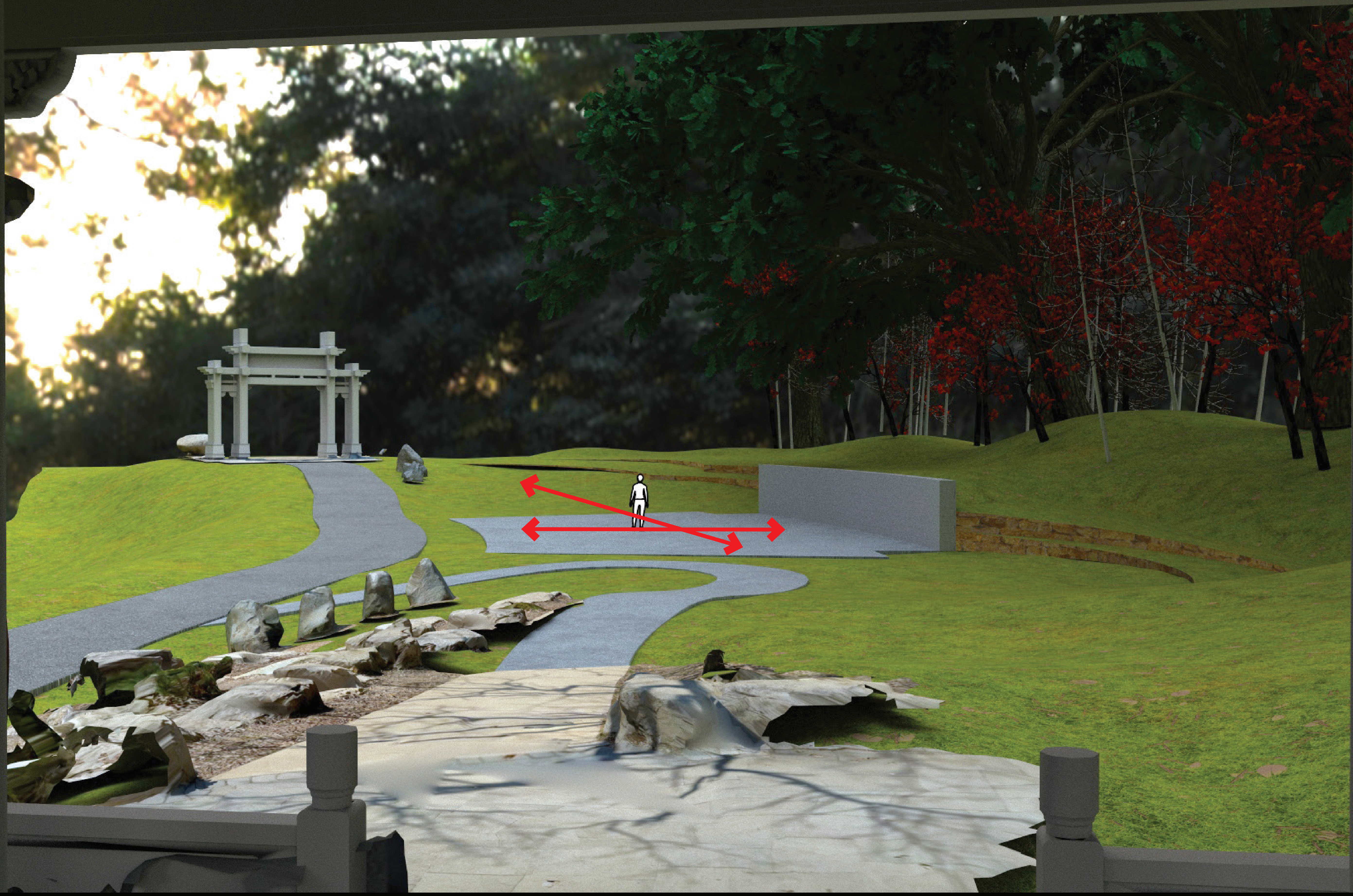


HMONG PLAZA



NOTE: IMAGE AS A PLACEHOLDER AND NOT TO SCALE. FUTURE PLANTINGS MAY CHANGE.

HMONG PLAZA



HMONG PLAZA



NOTE: IMAGE AS A PLACEHOLDER AND NOT TO SCALE. FUTURE PLANTINGS

NEXT STEP - HMONG PLAZA DETAILS

CHARACTERISTICS:

- WOMAN'S HEADRESS
- HMONG NECKLACE
- QEEJ
- MIGRATION WALL:
 - MAP
 - HISTORY
 - DESCRIPTION
 - CULTURAL CHANGES
- GRINDING STONE SCULPTURE
- SYMBOLS:
 - HMONG DESIGNS, PHOENIX, BUTTERFLY

CONSIDERATIONS:

- SCALE
- ORIENTATION
- SYMBOLS
- MAINTENANCE, MATERIALS

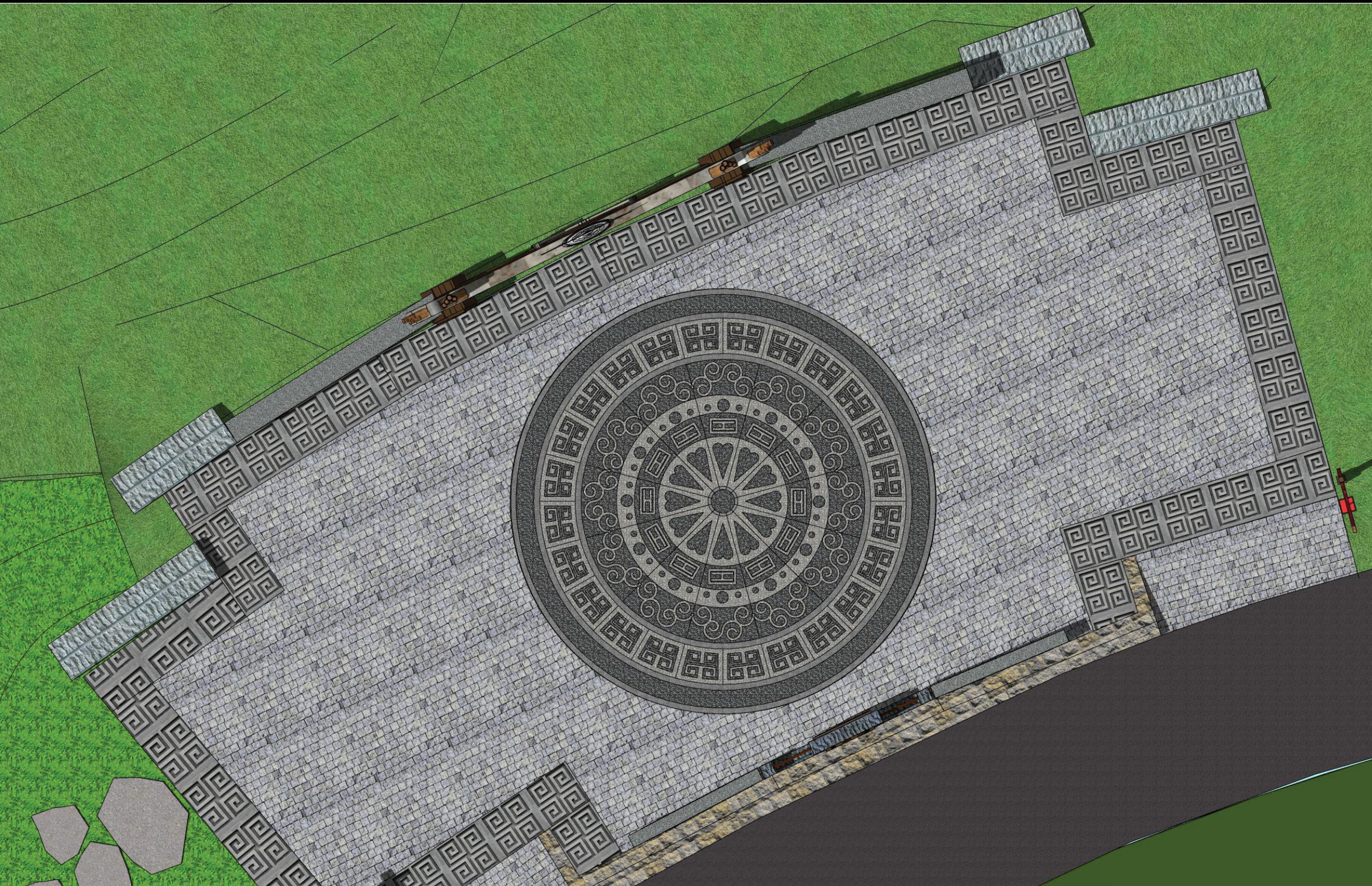
NEXT STEPS:

- PHASE II (INCLUDING HMONG PLAZA)
TO BE DESIGNED BY SUBCOMMITTEE OF
DESIGN PROFESSIONALS AND ARTISTS.
- PRESENT DESIGN TO ADVISORY
COMMITTEE AT FUTURE MEETING.

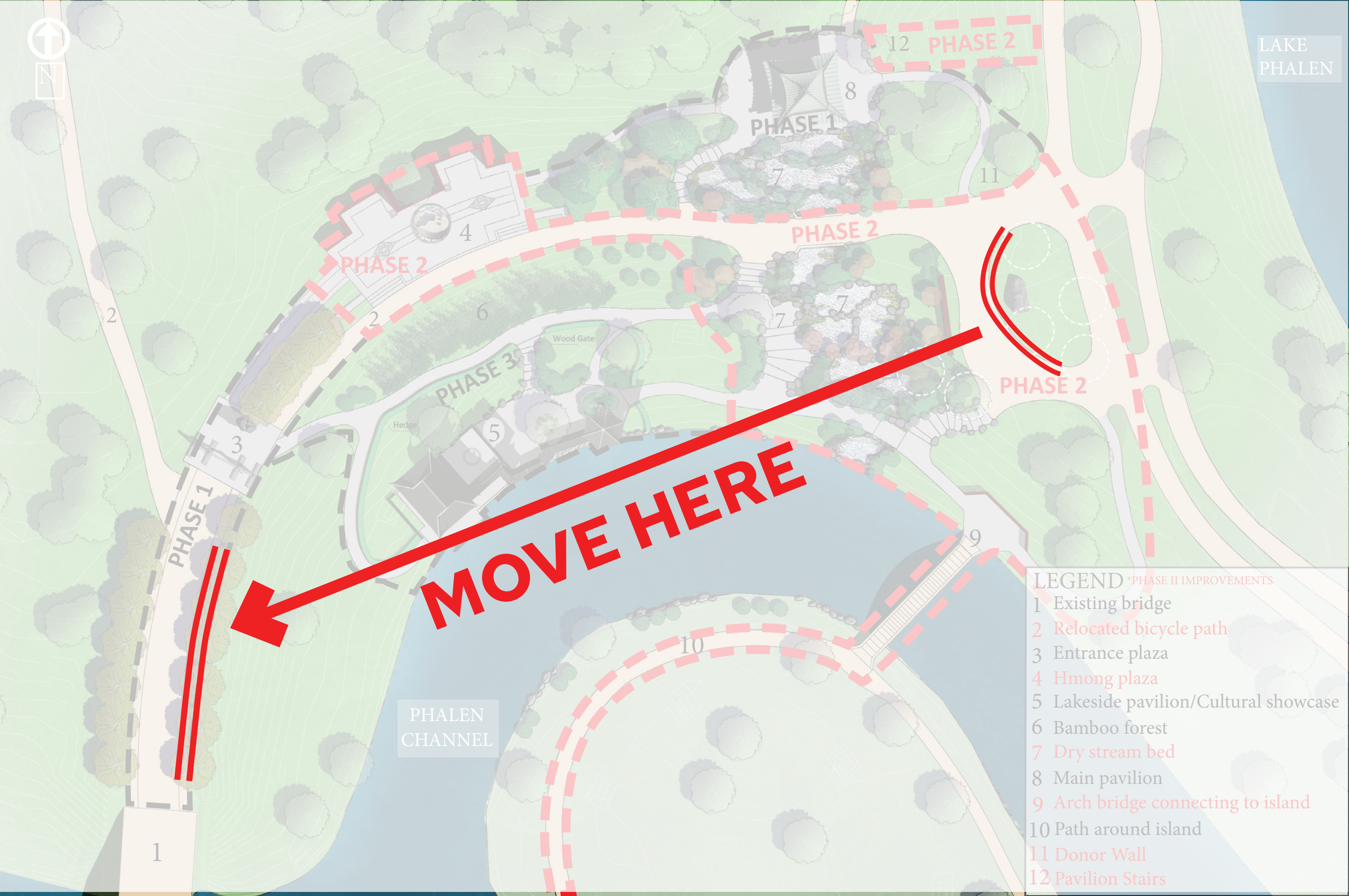
QUESTIONS?



TRADITIONAL PATTERN EXAMPLES



DONOR WALL



MOON BRIDGE

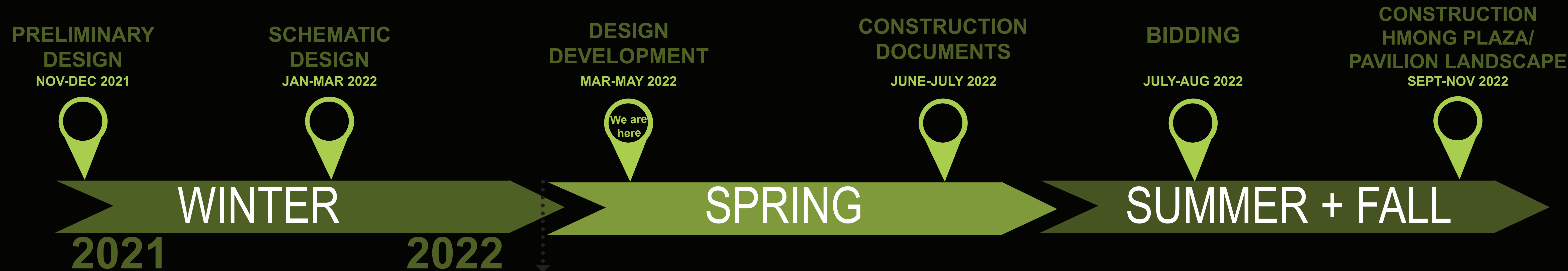


STONE VENEER



DRAGON SCALE VENEER

NEXT STEPS



- Preliminary Design
 - DAC #1: 10/18 (Virtual)
 - DAC #2: 11/10 (Virtual)
 - DAC #3: 11/17 (Virtual)
- Schematic Design
 - DAC #4: 01/11 (Virtual)
 - DAC #5: 01/18 (Virtual)
 - DAC #6: 3/17 (Virtual)
 - DAC #7: 6/13**
- Design Development
 - DAC #8: July
 - Public Review: Aug
- Construction Docs
- Bidding/Award of Hmong Plaza & Pavilion Landscape
- Construction

PROJECT CONTACT: Brett.Hussong@ci.stpaul.mn.us
PROJECT WEBSITE: www.stpaul.gov/phalenchinagarden

THANK YOU!

PROJECT CONTACT: Brett.Hussong@ci.stpaul.mn.us

PROJECT WEBSITE: www.stpaul.gov/phalenchinagarden

PHALEN REGIONAL PARK
ST. PAUL - CHANGSHA CHINA FRIENDSHIP GARDEN

June 2022



MN CHINA FRIENDSHIP
GARDEN SOCIETY



HUNAN JIANKE
LANDSCAPE CO LTD.



PAUL PARKS AND RECREATION
DESIGN AND CONSTRUCTION

PHALEN REGIONAL PARK
ST. PAUL - CHANGSHA CHINA FRIENDSHIP GARDEN

June 2022



MN CHINA FRIENDSHIP
GARDEN SOCIETY



HUNAN JIANKE
LANDSCAPE CO LTD.



PAUL PARKS AND RECREATION
DESIGN AND CONSTRUCTION