



STPAUL.GOV



CITY OF SAINT PAUL PUBLIC WORKS
June 8, 2022

Wheelock Pkwy Reconstruction



Agenda

- Project Information & Background
- Design
- Construction
- Assessment
- Contact Information

Project Info and Background



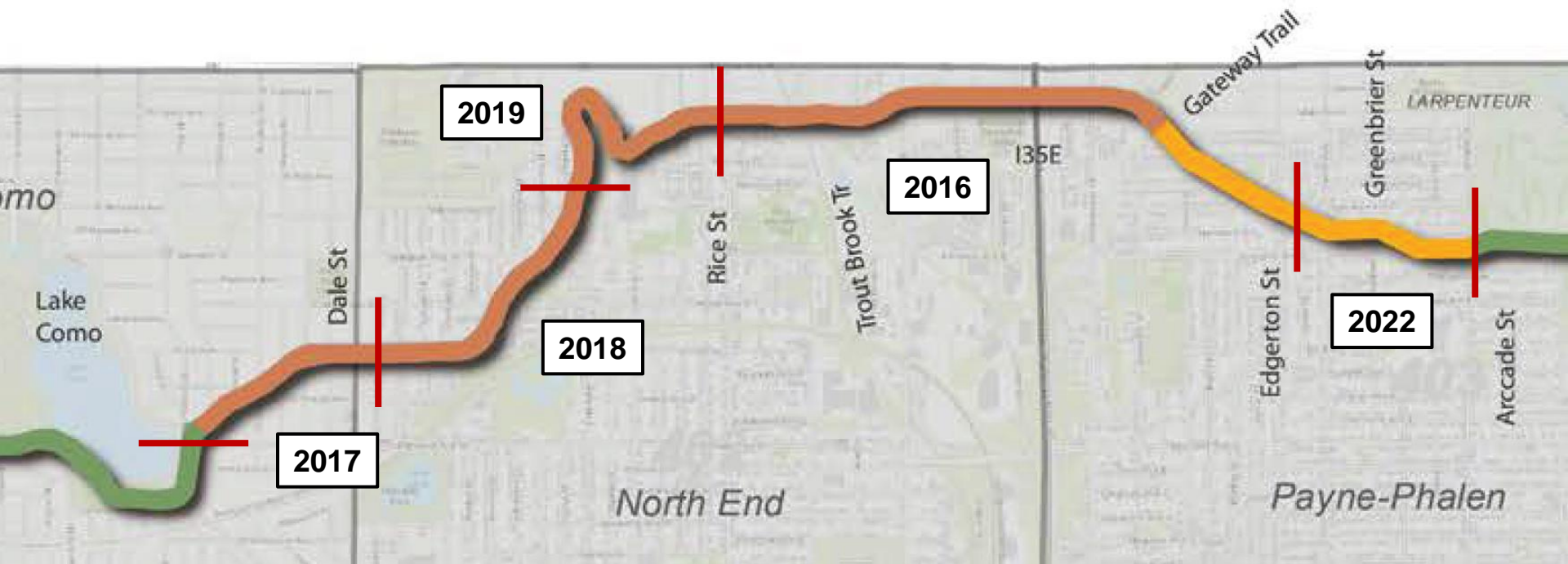
SAINT PAUL
PUBLIC WORKS

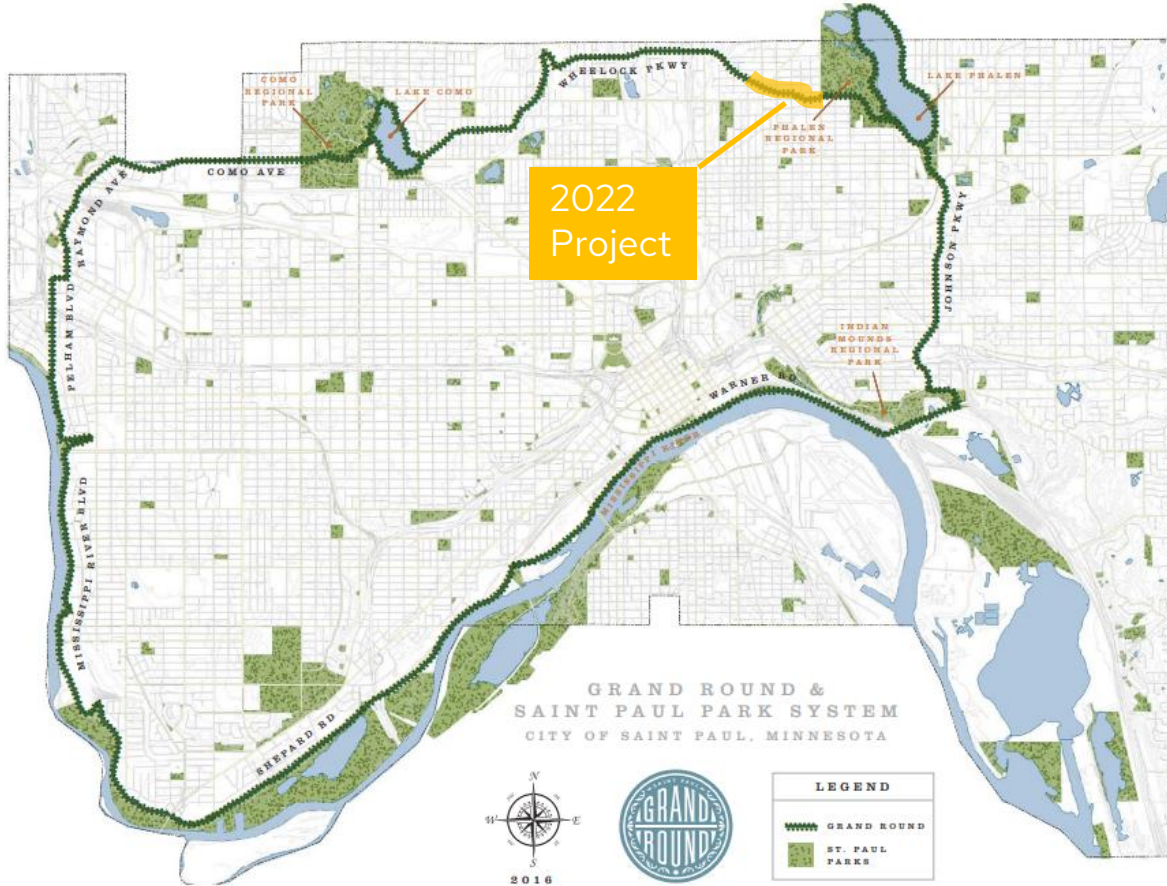
STPAUL.GOV



Project History

History: Original pavement constructed 1925.







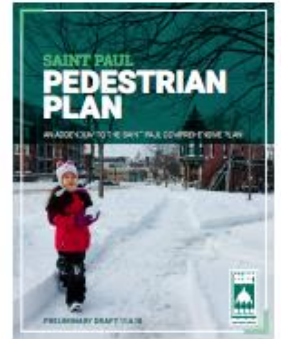
Grand Round Vision

The Saint Paul Grand Round is a scenic parkway for pedestrians, bicyclists, and motorists that connects people to parks, nature, neighborhoods, and businesses.



Grand Round – Over 100 years of planning

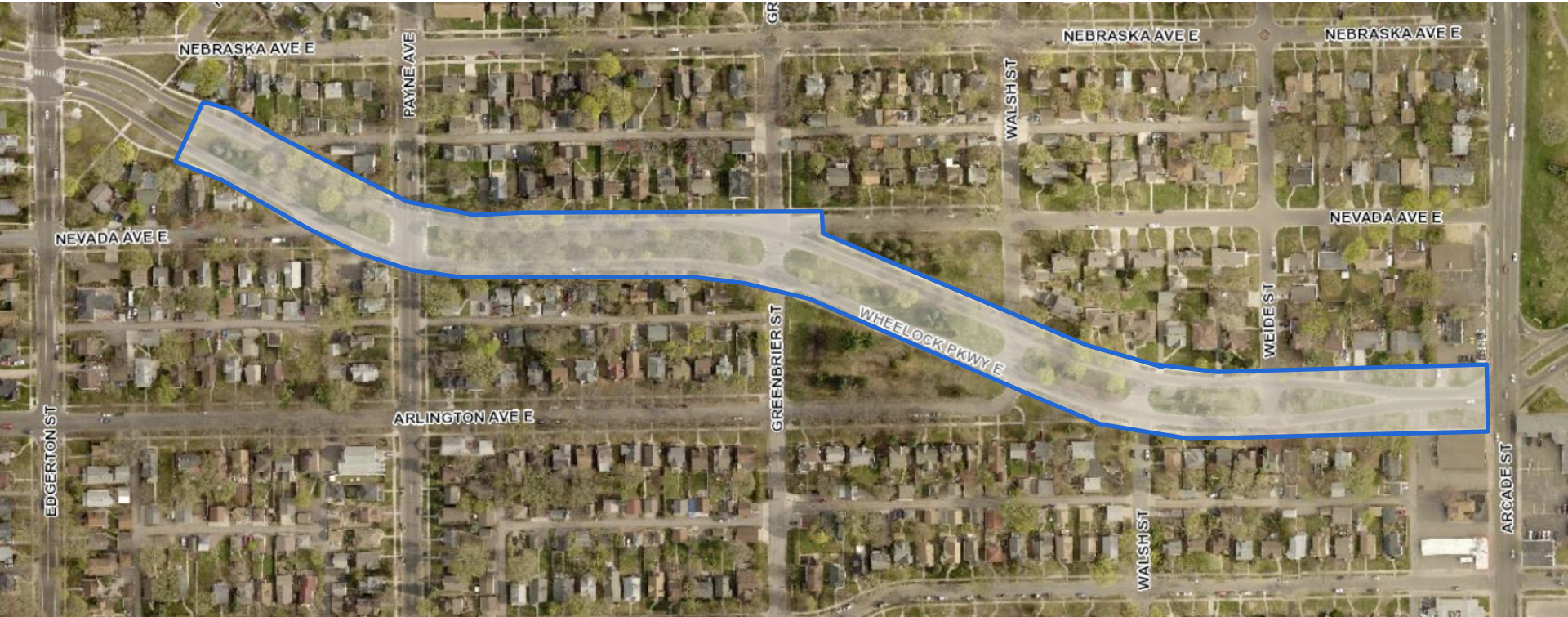
- Park System Plan (HW Cleveland – 1872)
- Grand Round Master Plan (2000)
- Saint Paul Bicycle Plan (2015, updating currently)
- Grand Round Design & Implementation (2016)
- Saint Paul Pedestrian Plan (2019)





Project Scope

Length: 2,400 ft.
Parkway width: 120 ft.





Existing conditions



Current terminus east of Edgerton

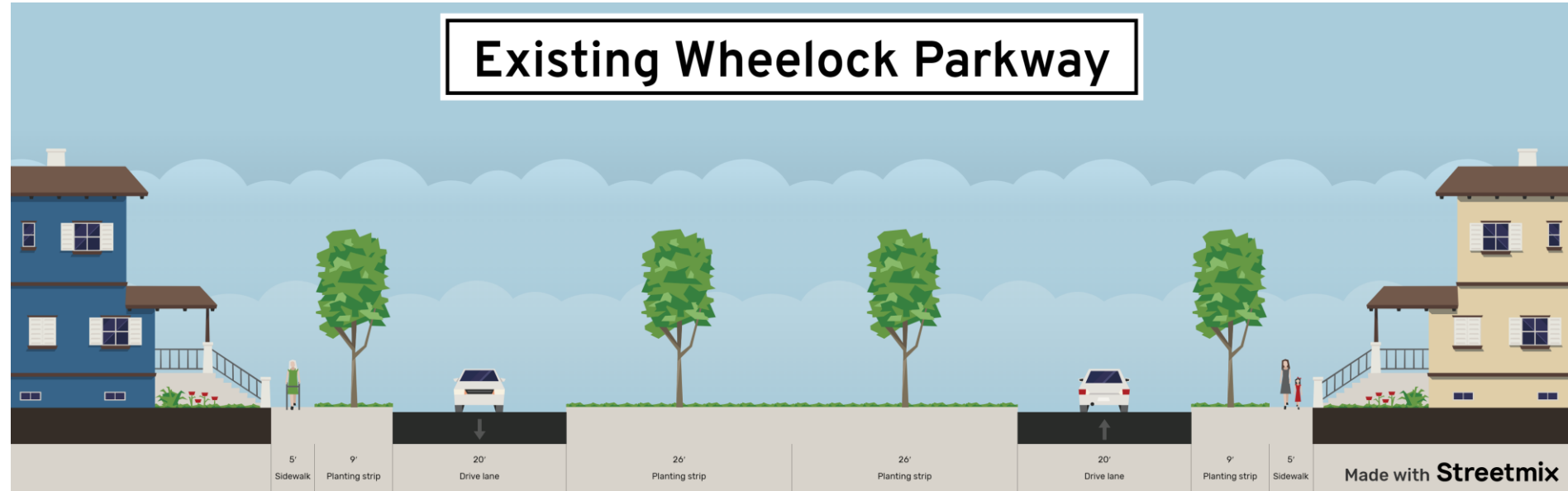


At Greenbrier



Existing Wheelock – Edgerton to Weide

Existing Wheelock Parkway



Proposed Design for Wheelock Parkway



SAINT PAUL
PUBLIC WORKS

STPAUL.GOV



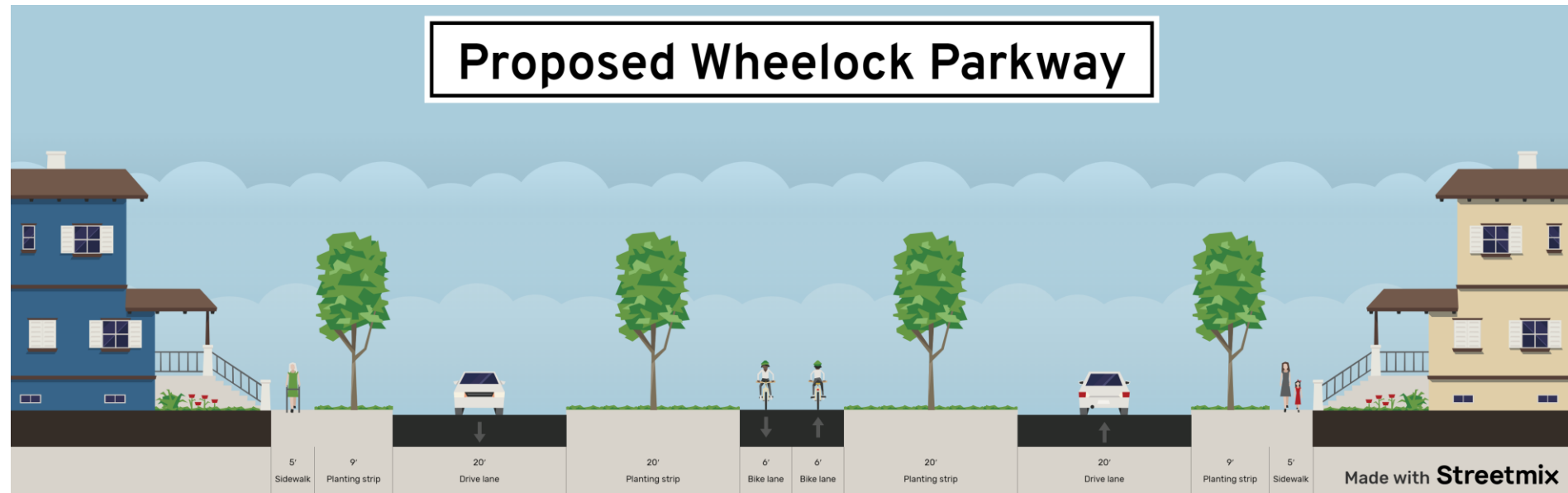
Project Improvements

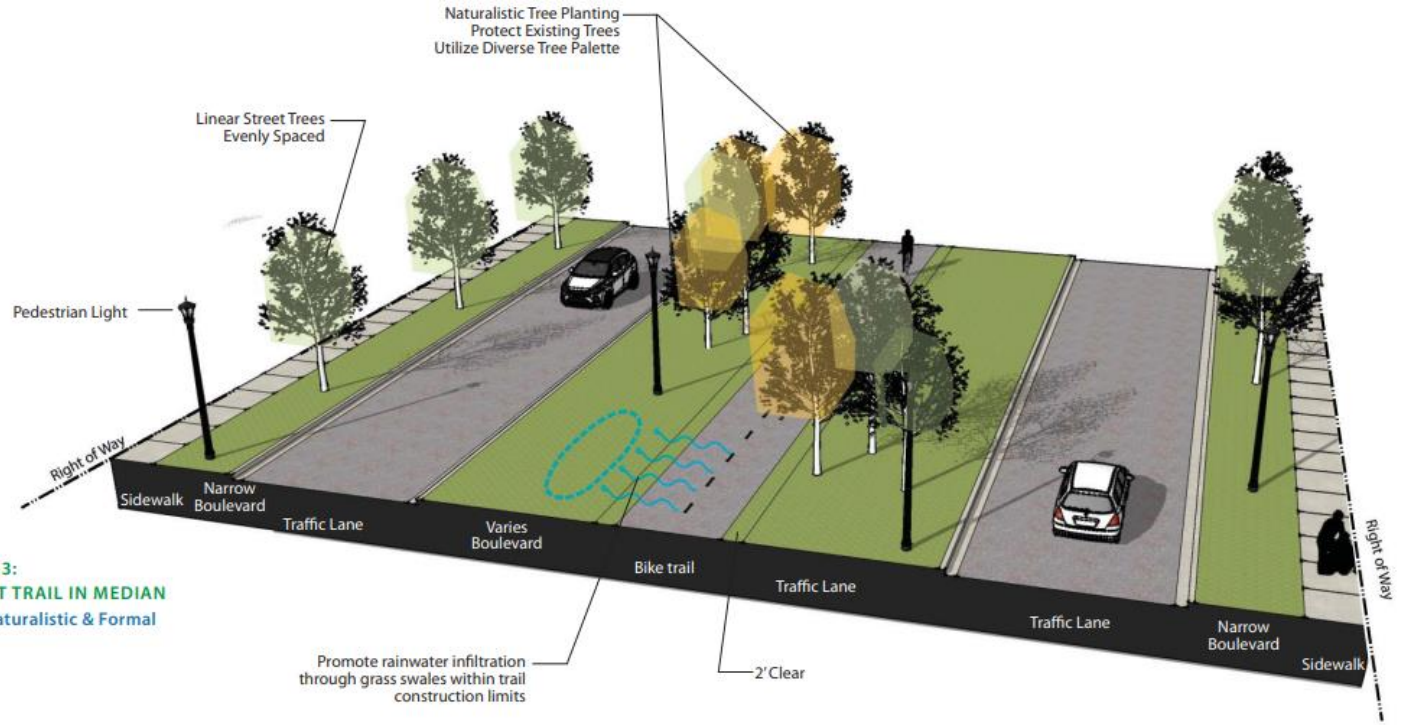
- New concrete curb and gutter
- New roadway pavement
- New off-street path
- Sidewalk replacement and new sidewalk at intersections for crossing
- ADA-compliant pedestrian ramps
- Utility upgrades including new watermain and storm sewers



Proposed Wheelock – Edgerton to Weide

Proposed Wheelock Parkway

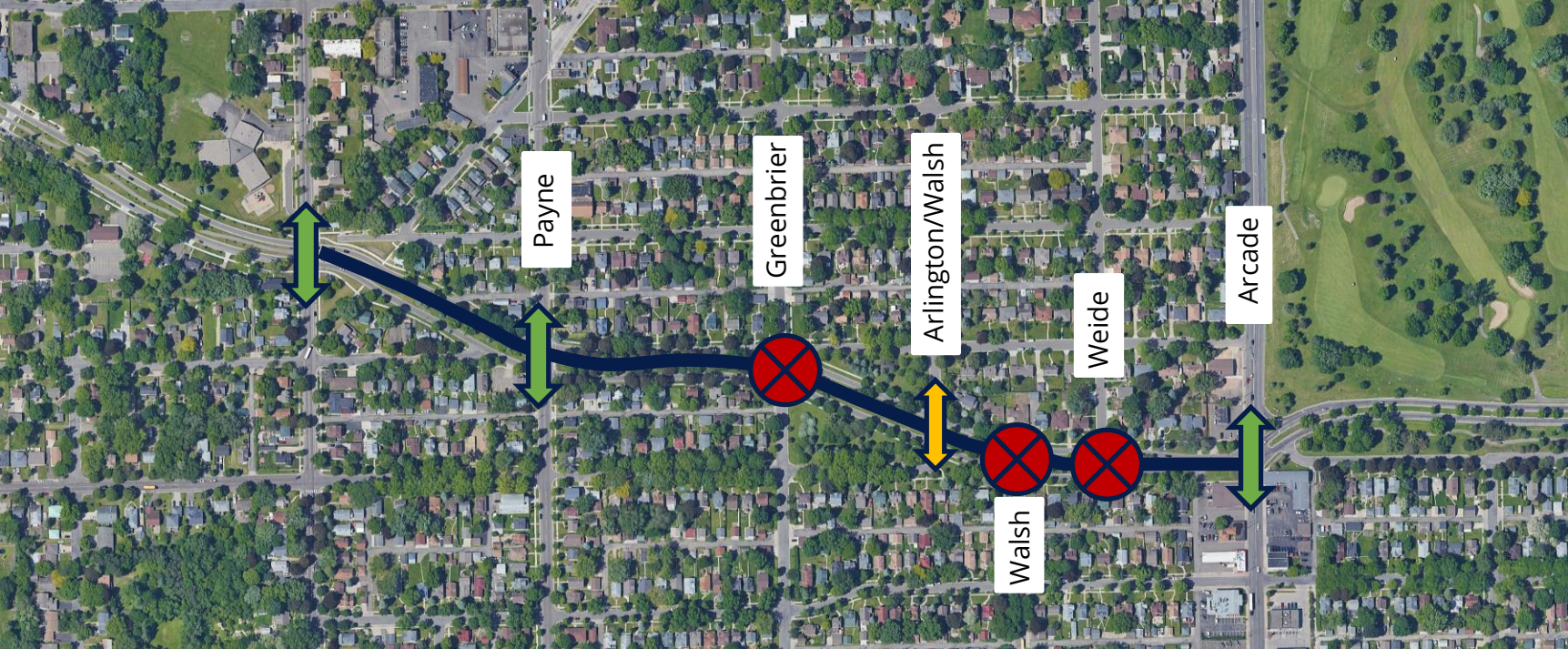




TYOLOGY 3:
OFF-STREET TRAIL IN MEDIAN
Hybrid of Naturalistic & Formal


Promote rainwater infiltration through grass swales within trail construction limits

Three intersection types



 Median closure

 Raised crossing

 Full access



Median closure

- Greenbrier, Walsh (east), Weide
- Increases safety: most crashes occur at intersections – both involving drivers and people walking/biking
- Planned closures require drivers to reroute no more than 500 feet
- People walking and biking can still cross
- Closures help make the road feel more like a parkway (less like a typical street)
- Increases green space
- Provides a more seamless experience for people walking and biking





Raised Crossing

- Example constructed in 2016 on Wheelock Parkway west of Edgerton Street



Construction Improvements



SAINT PAUL
PUBLIC WORKS

STPAUL.GOV



Concrete Curb and Gutter with Catch Basins

Before



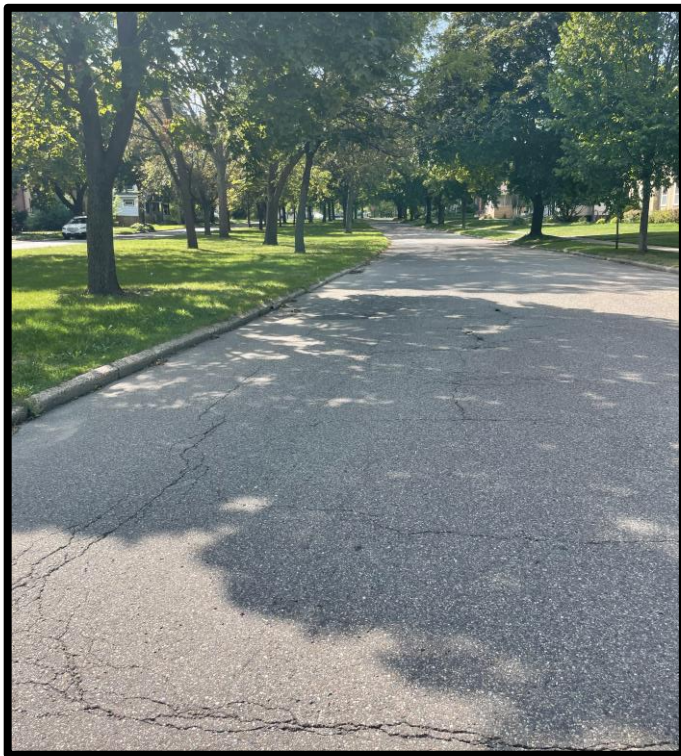
After





Bituminous Pavement

Before



After





ADA-Compliant Pedestrian Ramps

Fan Ramp



Directional Ramp





Driveways

Before



After



New driveway aprons will be concrete, regardless of any existing special material, and reconstructed at 12-foot-max, 30 feet beyond the garage.



Street Lighting

Before



After



Utility Improvements



SAINT PAUL
PUBLIC WORKS

STPAUL.GOV



Private Utilities

- Private utilities, such as Xcel and communication companies will be making upgrades to their facilities.

Xcel Gas will be upgrading the gas mains starting in mid-May to be done before the Public Works contractor begins.

Telecommunications companies may also make upgrades prior to Public Works Construction



Saint Paul Regional Water Service



SAINT PAUL
PUBLIC WORKS

STPAUL.GOV



Water Main Replacement



- Water main is approx. 8' feet deep
- Most existing residential water mains are 6" diameter cast iron pipe.
- Most mains are replaced as 8" diameter ductile iron pipe or 8" PVC dependent on existing soils
- Installation by PW Contractor, SPRWS providing temporary water
- Water main must pass a series of bacterial tests, pressure tests, and conductivity tests prior to being put in service



Temporary Water Mains



- 2" PVC pipe laid in the grassy area or on edge of sidewalk
- Fully Bacterially tested prior to hook-up
- Will become quite warm during the summer
- Water is provided at no cost when connected to temporary water



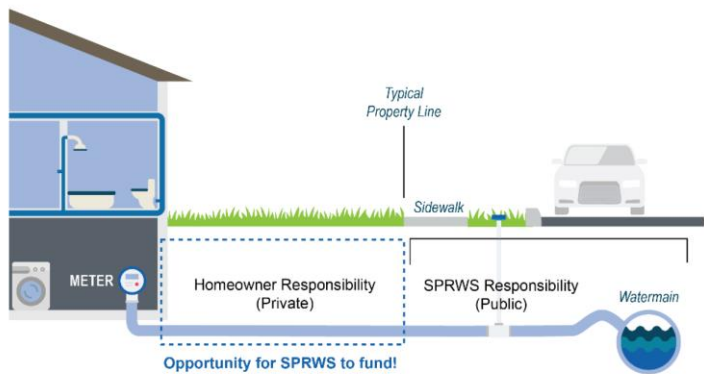
Temporary Water Connection



- Back fed through outside hose spigot through the use of a grey potable water rated hose
- A wye is installed to allow use of garden hose while connected
- Notification of temporary water will be posted on front door
- Temporary water crew will need to access the water meter inside building twice, once during install and once for the take down



Water Service Connection



- Water services are re-connected to the main once the watermain is fully tested and live
- Most existing copper services are reconnected with only excavation at the watermain
- All lead services in the ROW are replaced with copper pipe at SPRWS cost
- Lead services in private property can be replaced by SPRWS contractor at no cost to homeowner



Contact Information for Saint Paul Regional Water Service

Tom Jauquet

Damage Prevention and Inspections Supervisor

Cell: 651-706.2030

tom.jauquet@ci.stpaul.mn.us

SPRWS Engineering Service Desk

651-266-6270

Saint Paul Sewer Utility

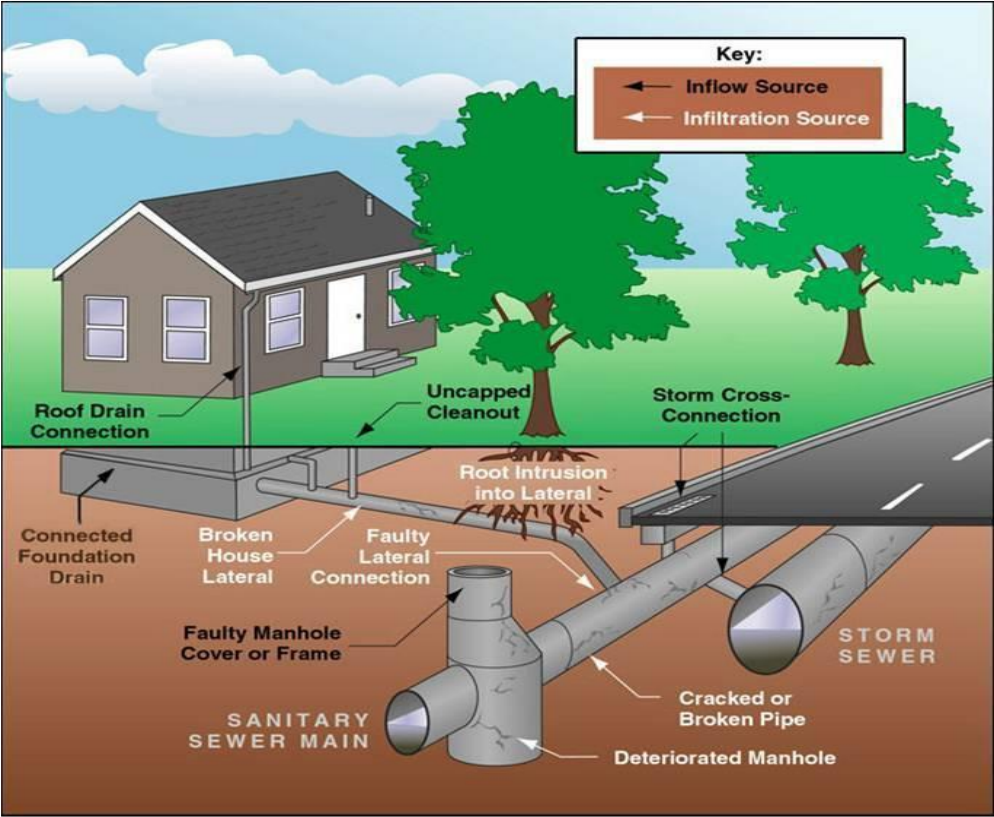


SAINT PAUL
PUBLIC WORKS

STPAUL.GOV

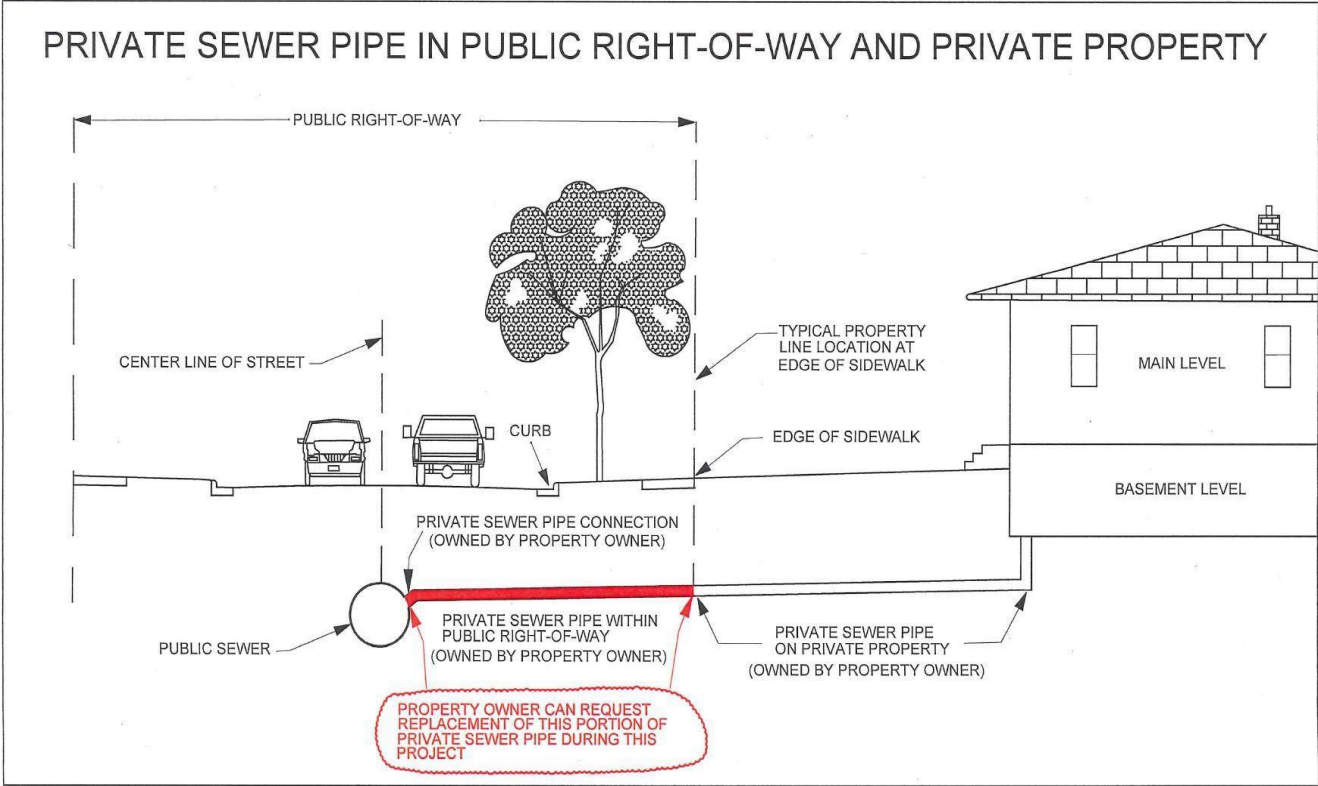


Sanitary Sewer Issues





Sanitary Sewer Replacement Option: Only in Right of Way





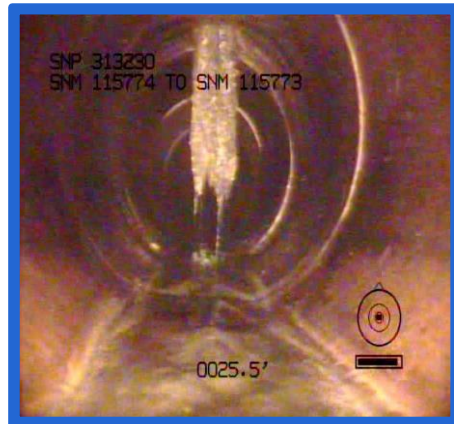
Warning Signs of a Defective Sewer Service

- Does your drain run slowly or gurgle?
- Do you have sewer odors?
- Do you know where your sewer service runs?
- Are there bushes or trees planted over it?
- Has your sewer line ever been cleaned and inspected?
- Do you have a garbage disposal and do you use it for everything?
- Is there a sinkhole or depression near your home, boulevard, or street?



Common Sewer Problems

- Dropped connection to the main
- Broken clay pipe
- Root intrusion





Benefits of Repairing the Sanitary Sewer Service in the Right of Way during Street Reconstruction

- Extends the system service life
- Reduces the risk of:
 - Sewer backups
 - Sinkholes
 - Rodent access
- Cheaper during construction
 - Fixed rate
 - Don't have to pay for street restoration
 - 20-years to pay



Sanitary Sewer Service Repair Cost

COST COMPARISON INFORMATION	
Replacing Your Sewer Service from the Main in the Street to the Property Line in the Right of Way	
During Construction	After Construction
Approximately \$3,500*	Typically More Than \$5,000*
<ul style="list-style-type: none">▪ Cost to property owner can be spread out over a 20-year term/assessment▪ No street restoration costs	<ul style="list-style-type: none">▪ Restoration costs are paid by the property owner
If you are interested in optional sewer service replacement as part of street reconstruction – ACT NOW!	

**Sanitary sewer replacement costs can vary significantly based on the situation*

Living Through a Construction Project



SAINT PAUL
PUBLIC WORKS

STPAUL.GOV



Living Through Construction

- What to expect:
 - Noise
 - Dust
 - Mud
 - Limited Access
 - Inconvenience





Living Through Construction

- Your street will be dug up numerous times
- The work is done in layers and often by different crews doing different types of work
- Plan on 4-5 months of disruption
- Business, resident, and emergency vehicle access will be maintained at all times



Living Through Construction

- All of the construction is done by private construction companies
- Most road work is weather dependent, and rain *will* delay work
- Contractors work 5 to 6 days a week from 7:00 a.m. until 7:00 p.m.
- The City of Saint Paul will have an onsite representative (project inspector) to inspect the contractor's work



Road Closures



Road Closed to Thru Traffic

You can get to your house, but you cannot get all the way through. You will eventually come to a **Road Closed** sign.



Road Closed

Do Not Enter! Not safe beyond this sign.

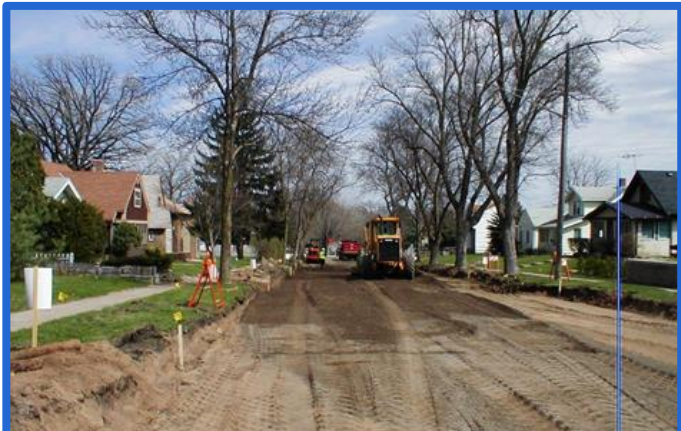


Living Through Construction

- You will receive a letter prior to the start of construction – keep this for names and contact numbers
- A flyer will be handed out a week before construction starts on your block – check front doors for flyers
- Onsite Public Works Inspector – the project inspector should be your **first call** with questions or issues
- Weekly updates will be posted to the city's website at www.stpaul.gov/wheelock



Living Through Construction



Assessments



SAINT PAUL
PUBLIC WORKS

STPAUL.GOV



General Project Assessment Information

- Street reconstruction projects are funded by:
 - City Street Reconstruction Bonds (SRB)
 - Assessments to abutting property owners
- The assessment rate for paving and lighting was mailed to property tax payers prior to the April 13, 2022, public hearing.
- Property owners are assessed after the construction project is complete
- Separate assessment for optional private sewer repair
- View information about and pay assessments at www.stpaul.gov/assessments



Contacts for Wheelock Parkway Reconstruction

Project Manager	Chris Engelmann	651-266-6084
Project Inspector	Brad Mikiska	651-448-0115
Public Works Street Lighting	General Line	651-266-6200
Parks and Recreation	Forestry Unit	651-266-6400
SPRWS (Water)	Service Desk	651-266-6270
Public Works Sewers	Utility Permit Desk	651-266-6234
Real Estate Section - Assessments	General Line	651-266-8858