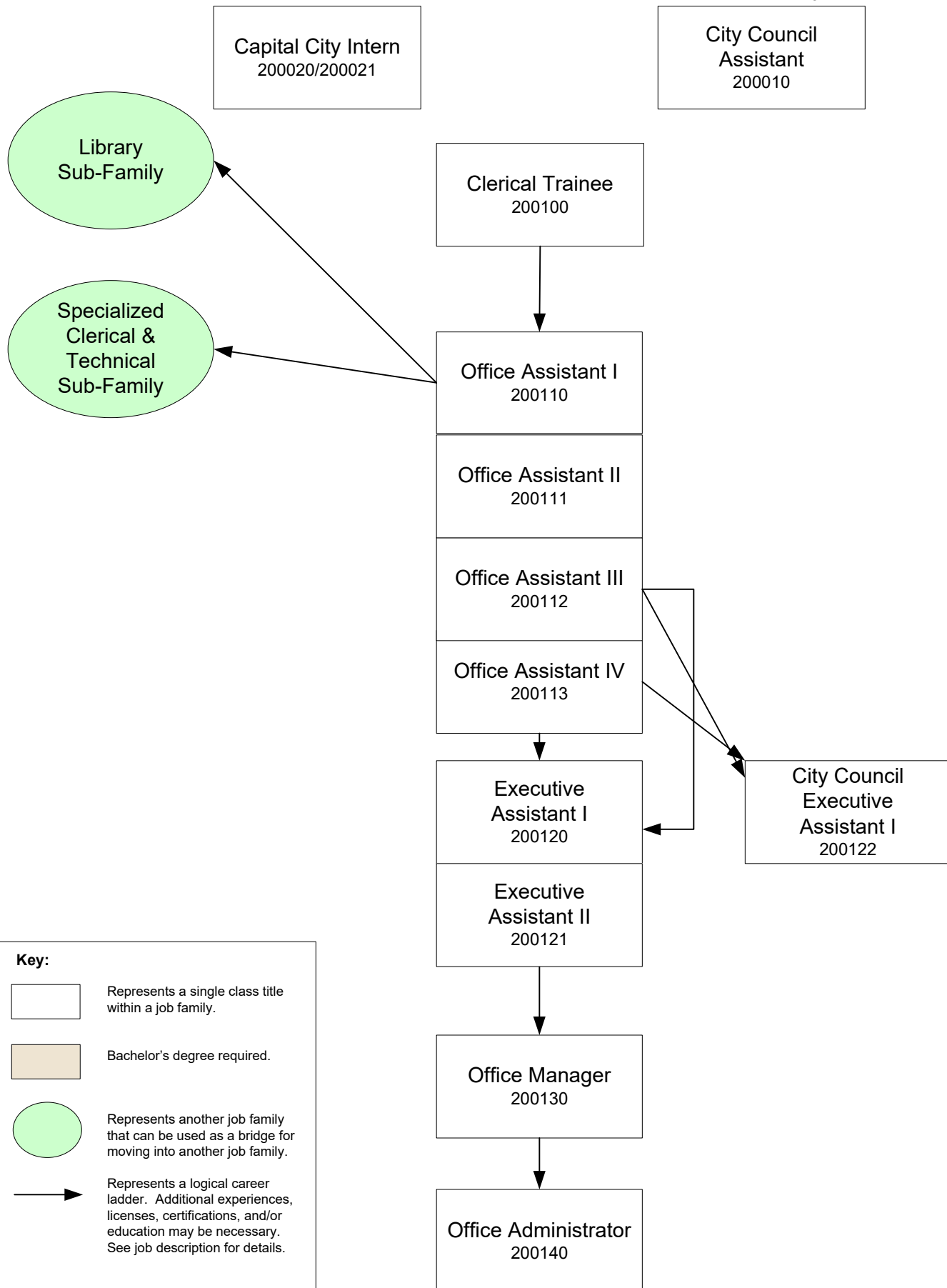


# OFFICE SERVICES JOB FAMILY

## General Clerical & Supervision Sub-Family

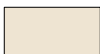
[Job Descriptions](#)



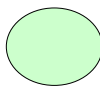
### Key:



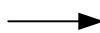
Represents a single class title within a job family.



Bachelor's degree required.



Represents another job family that can be used as a bridge for moving into another job family.



Represents a logical career ladder. Additional experiences, licenses, certifications, and/or education may be necessary. See job description for details.

Please note: Movement into "Starred" classes is not allowed.

Revised: 06/28/2022