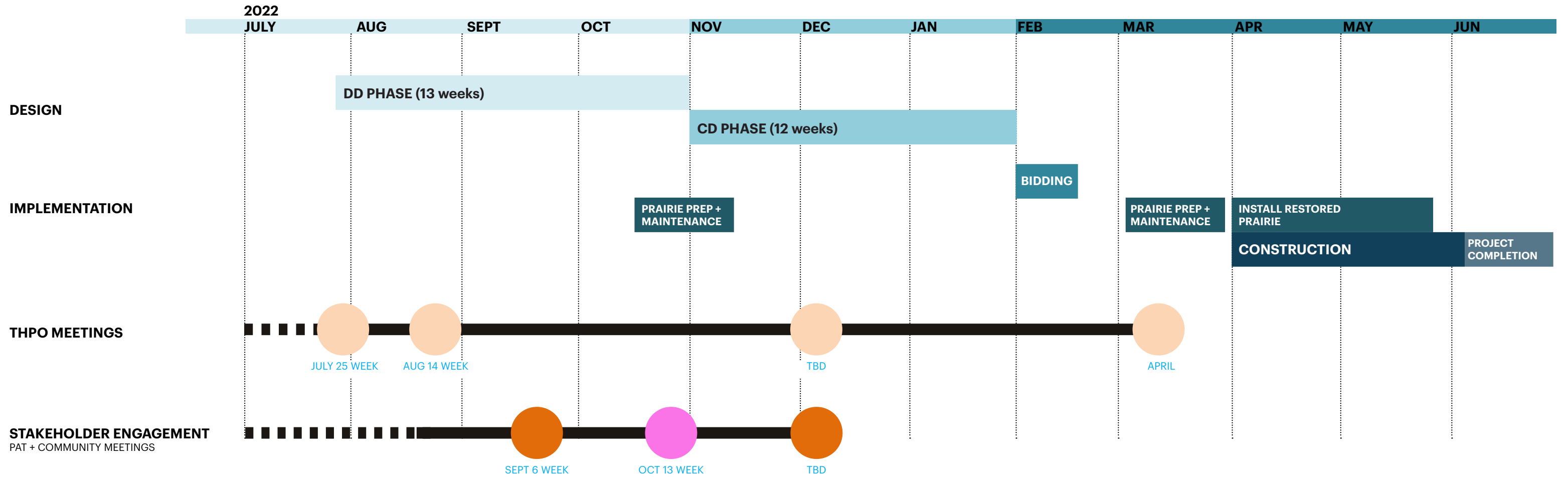
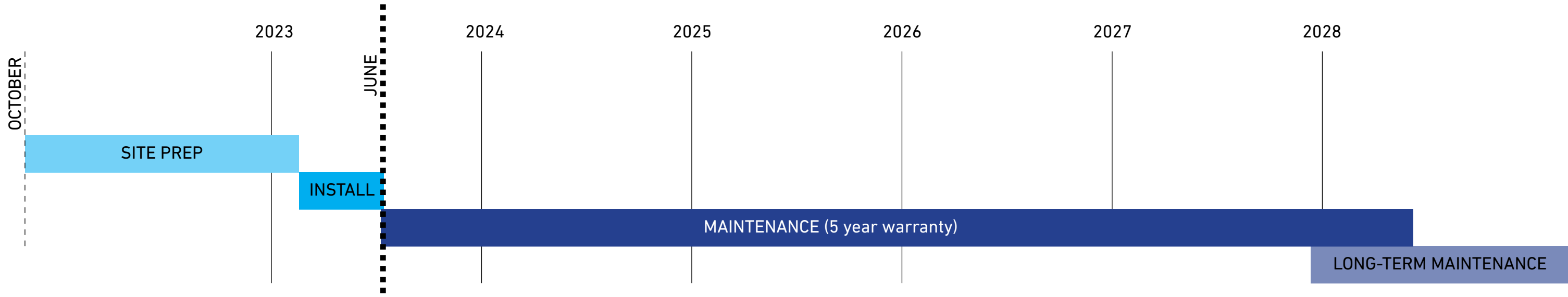


# PHASE 1 MESSAGING SCHEDULE

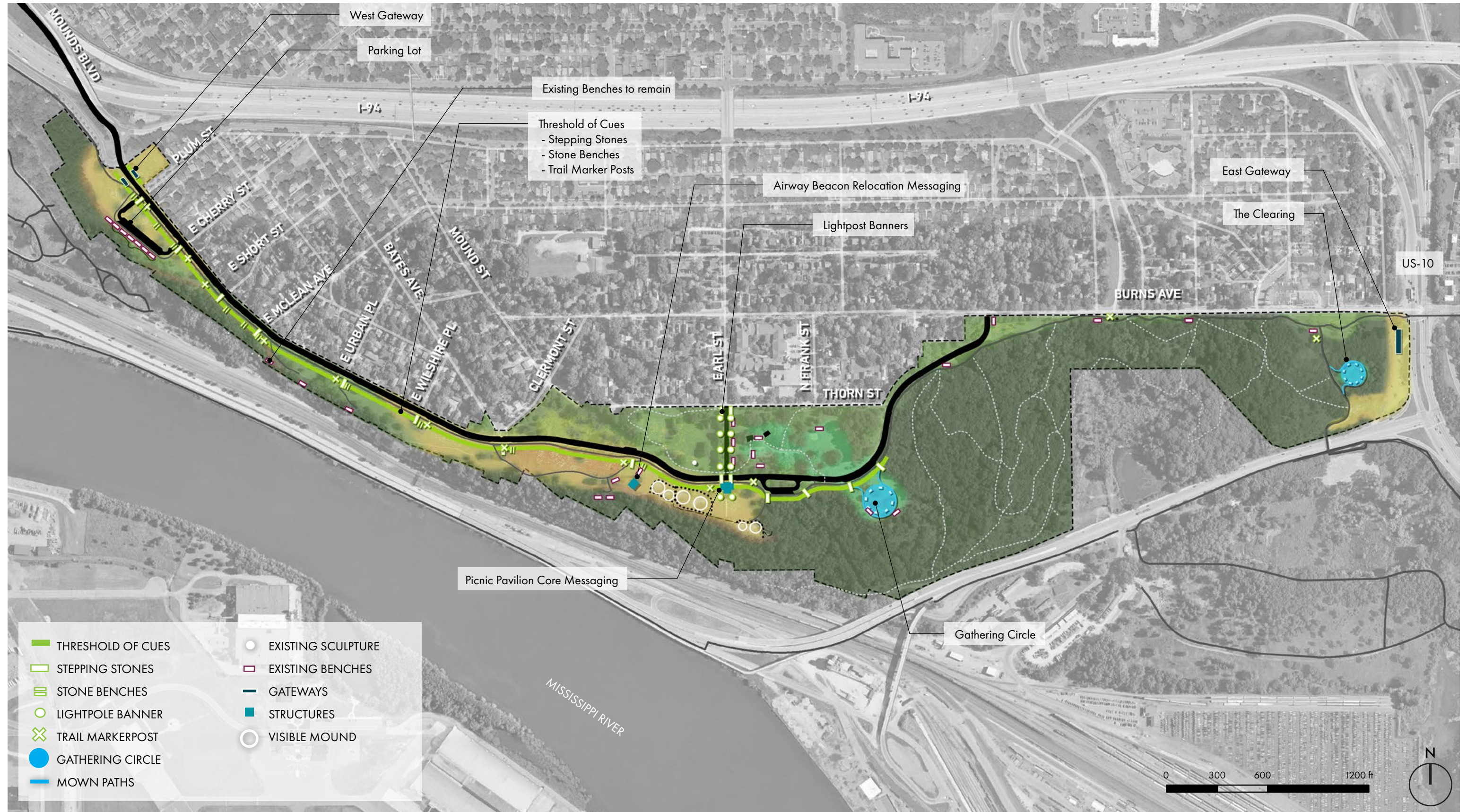


# PHASE 1 PRAIRIE RESTORATION SCHEDULE



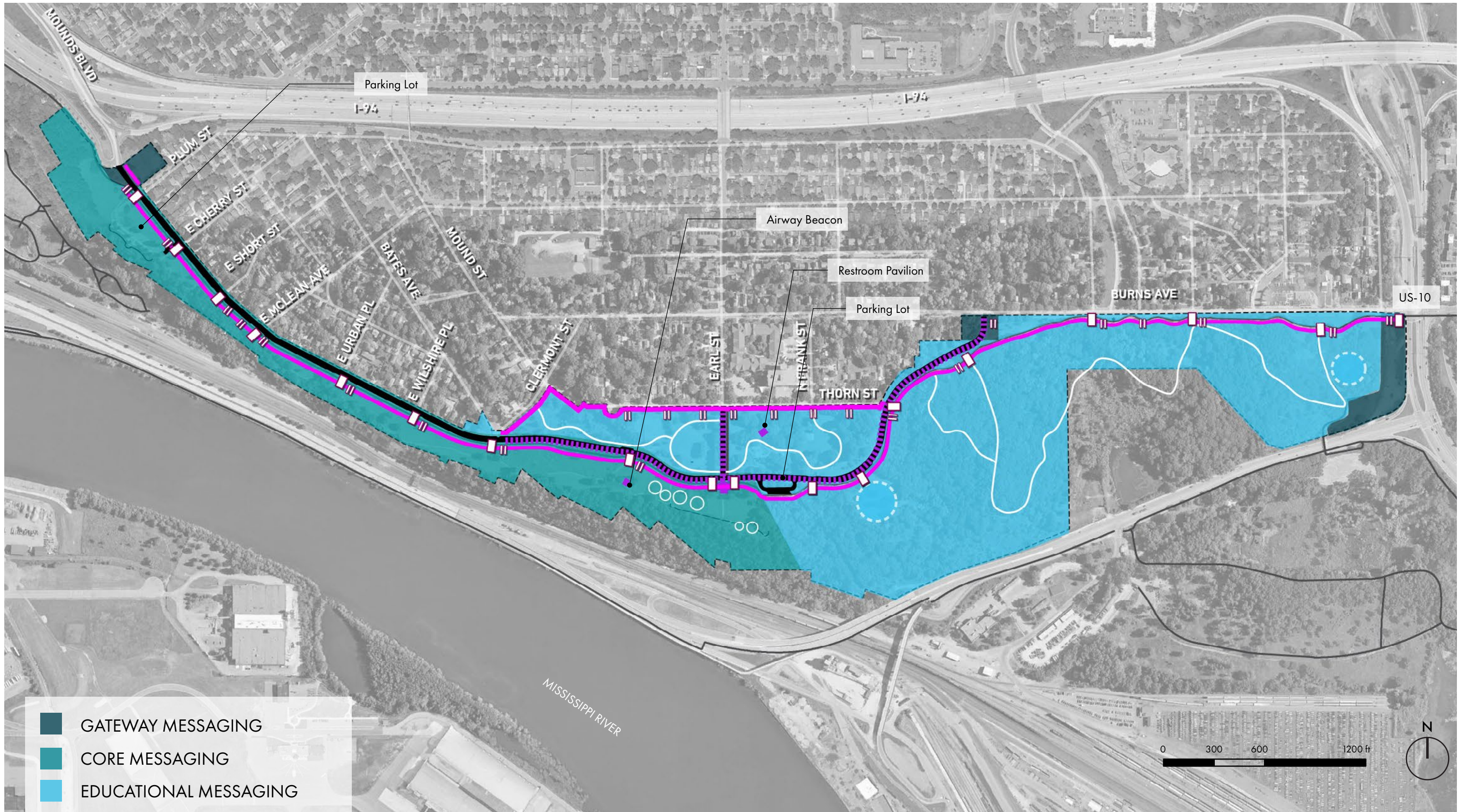


# CLS PROPOSED FEATURES + PRAIRIE





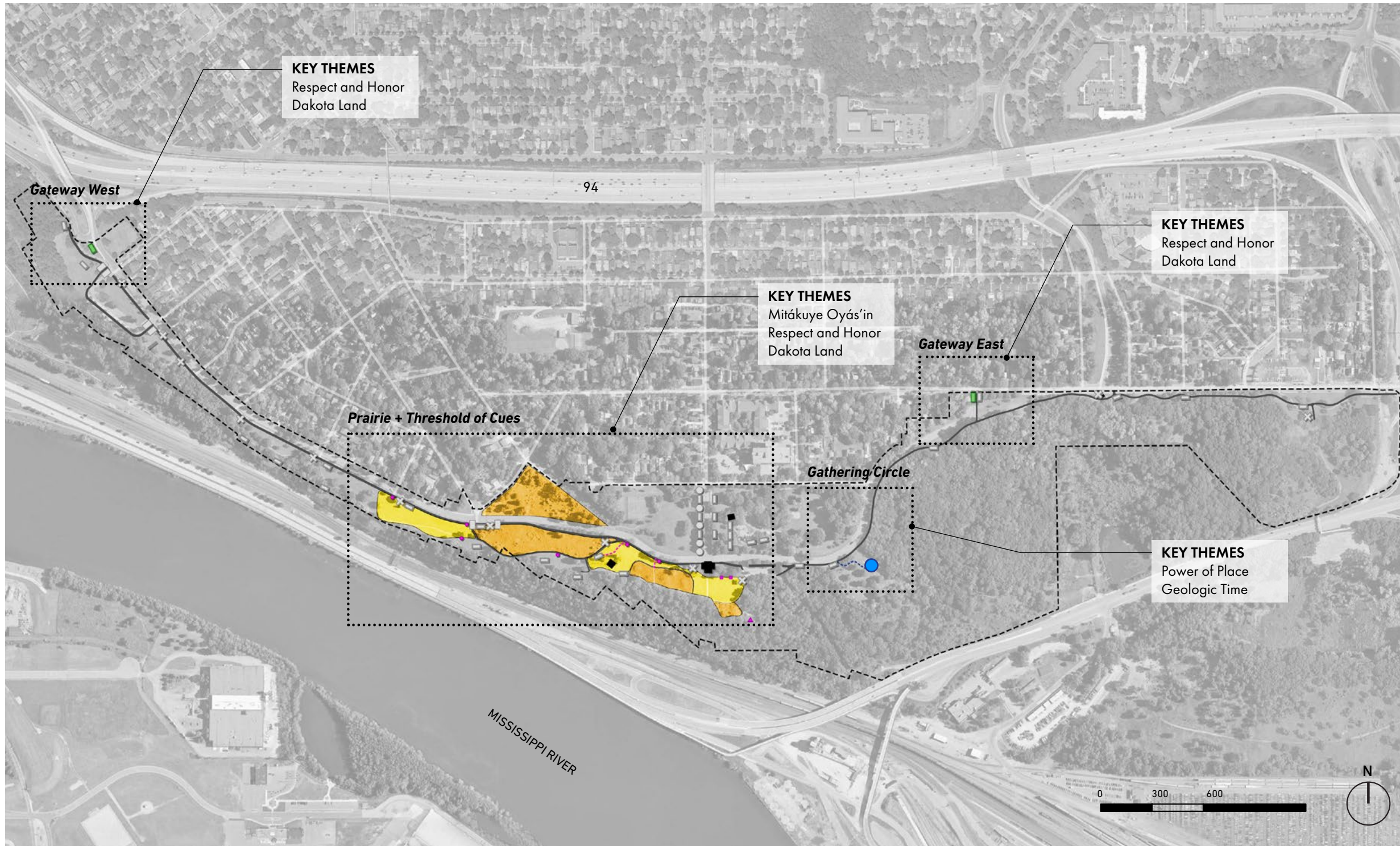
# CLS PROPOSED AREA MESSAGING





# PHASE 1 MESSAGING / PROPOSED MESSAGING FEATURES

Total quantity and location of messaging features is still in development, and currently being costed.



## FEATURE TYPE

- Gathering Circle
- - - Stone Path
- ▲ Threshold of Cues
- - - Mown Path to Messaging
- Gateways

## PLANTING SCOPE

- Existing Prairie
- Proposed Prairie

# PHASE 1 MESSAGING / PROPOSED MESSAGING KEY THEMES

## RESPECT AND HONORING

This site is an Indigenous burial ground, where, not dissimilar to western people at their own cemeteries, living Dakota still visit to honor, respect, and commune with their deceased ancestors. Any place of burial deserves respect from those who visit, and this space is no different. Current activities at the place of burial—barbecues, picnics, and play—are not activities suitable for a place of burial.

### KEY SUBTHEMES + STORIES

- You are standing on bodies
- This is an indigenous place of burial
- Minnesota has thousands of indigenous burial mound sites that follow the course of the Minnesota and Mississippi rivers.
- Mounds have been destroyed through plowing, road construction, vandalism, greed and archaeology
- Protection does not equal preservation
- Our ancestors are still here

## GEOLOGIC TIME

Evidence of the events that shaped this valley is still visible in today's landscape. The Mississippi River has spent the last 12,000 years carving cliffs into the ancient rocks. These cliffs of soft, white sandstone (called the St. Peter Sandstone) are the lithified remains of the expansive beaches of an Ordovician sea that covered the mid-west 450 million years ago. Deep time is at the surface, within view. The spiritual and cultural significance of this place is tied to the geology of the bluff — scrubbed by glaciers and worn by rivers and weather—in places, right through bedrock.

### KEY SUBTHEMES + STORIES

- Imnížaska, "White Cliffs" (pronounced Imanee'zha ska) referring to the limestone + sandstone bluffs (erosion, scouring, carving, terracing of the bluffs and river valley over time)
- Glaciers and the River Warren
- Wakan Tipi + the Spiritual Significance of Caves
- Influence on patterns of vegetation and landforms
- Floods creating/shaping the tectonics of the river valley
- Karst, Caves and Springs

## DAKOTA LAND

Being Dakota ("friend" or "ally") is a way of life, a way one walks through the world. Within the Minnesota and Mississippi River Valleys are sites that are considered sacred to Dakota people. The area now known as Minnesota has been called "home" by Dakota people for thousands of years.

### KEY SUBTHEMES + STORIES

- The sounds of the Dakota language and meanings of the words
- Water is life - Bdóte as the place of genesis, the center of the universe ("MNI" means water, but includes the word for life "NI")
- Dakota Communities
- The Seven Fires of the Dakota
- Dakota Place names then and now
- Treaties + Boundaries
- Collective Memory

## POWER OF PLACE

Dakota narratives passed on through generations reinforce the relationship between this place, the people, and the ancestors buried throughout this region. How is sacredness seen and experienced in these places?

### KEY SUBTHEMES + STORIES

- Ancestors
- Death and Birth (Mound and Cave)
- Cultural Identity tied to place
- Indigenous Centers of Power
- The Stars and Feminine Cosmology
- Burial Constructs (architecture + engineering)
- Spirit World, Utechi, Water Spirit
- Wakan Tipi / Dakuankan Tipi / Tipi
- Desecration, Destruction and Removal of the Mounds
- Reconciliation and Healing tied to landscape

## MITÁKUYE OWS'IN

This teaching is at the core of Dakota wicohan (ways of life) and it is used to guide decision-making and actions. Dakota people have been taught that "all" includes "everything seen and unseen"—animals, plants, humans, rocks, earth, waters, spirits. For many, it requires a significant shift in thinking to see all of creation as our relative and not as an object or property.

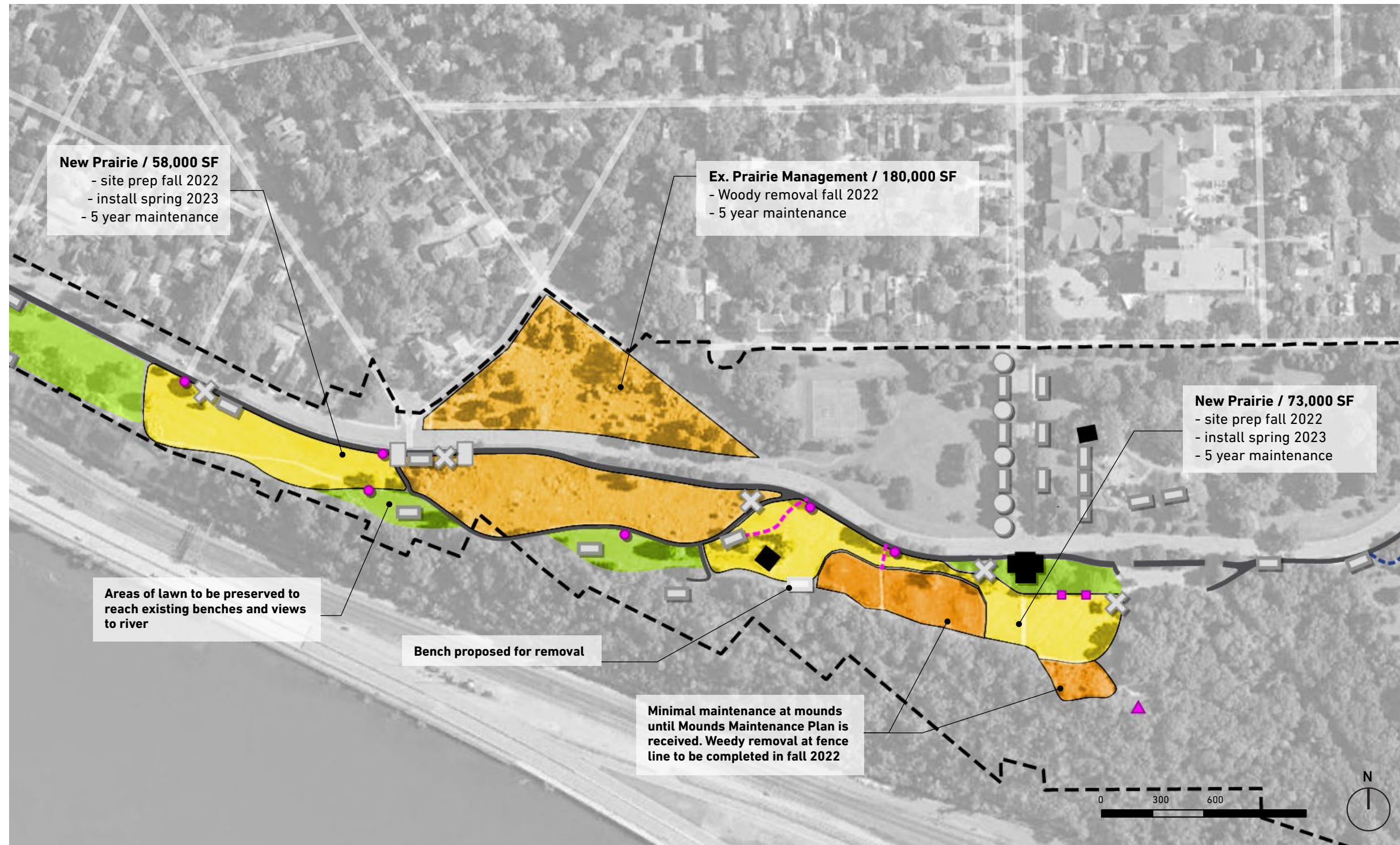
### KEY SUBTHEMES + STORIES

- Kinship (respect, interconnectedness, responsibility)
- Humans are related and Interdependent with all forms of life (animals, plants, rocks, stars, etc)
- Natural Democracy (sustainable practices)
- World view (social + ecological resilience)
- Habitat Creation
- Natural Democracy (sustainable practices)
- Indigenous Materials
- Kapémni (vortex or twisting between the living and spirit world)
- Wakan Tanka (the Great Mystery or Great Spirit, the concept of a supreme being)



# PHASE 1 MESSAGING / PROPOSED PRAIRIE

Final prairie layout has been shared with the community, THPO's, and PAT. Landbridge has begun site prep work with a fall herbicide spray to kill existing lawn and weeds, and will repeat this process in the spring before planting.





# PHASE 1 MESSAGING /SIGNIFICANT PLANTING SPECIES

The prairie species list and planting at messaging features prioritizes healing, reflective, and teaching species significant to the Dakota and recommended in the CLS.

## HEALING / PROTECTIVE SPECIES



PHEŽÍĤOTA / White Sage  
*Artemisia ludoviciana*



IČÁĤPEHÚ / Narrow Leaved Coneflower  
*Echinacea angustifolia*



PHEŽÍ ŠAŠÁ SBÚDAN / Little Bluestem  
*Schyzachyrium scoparium*



ČHANĤDÓGAN PHEŽÚTA / Prairie Coneflower  
*Ratibida columnifera*



ÚTAHU ČHÁN / Bur Oak  
*Quercus macrocarpa*



ĤÁNTEŠA / Northern white cedar  
*Thuja occidentalis*



ČHANŠÁŠA / Red-osier Dogwood  
*Cornus sericea*



PTÉ HOTHÚN / Blue Vervain  
*Verbena hastata*

## REFLECTIVE SPECIES



HITHÚŇKADAN NÁKPA / Pussytoes  
*Antennaria spp.*



PHEŽÍ ŠAŠÁ ÓKHIHE THANĤÍŇKINŇAN / Big Bluestem  
*Andropogon gerardii*



HEĤÁKA THAPHÉŽUTA / Wild Bergamot  
*Monarda fistulosa*



ÍŇKPA ŽIŽÍ / Indian Grass  
*Sorghastrum nutans*

## TEACHING /FORAGING SPECIES



PTEYÁĤOTA / Virginia Wild Rye  
*Elymus virginicus var. virginicus*



WAŽÚŠTEČA / Strawberry  
*Fragaria virginiana*



THOKHÁDAN THAPHÉŽUTA HÚ WÍŇYEDAN / Prairie Clover  
*Dalea purpurea*

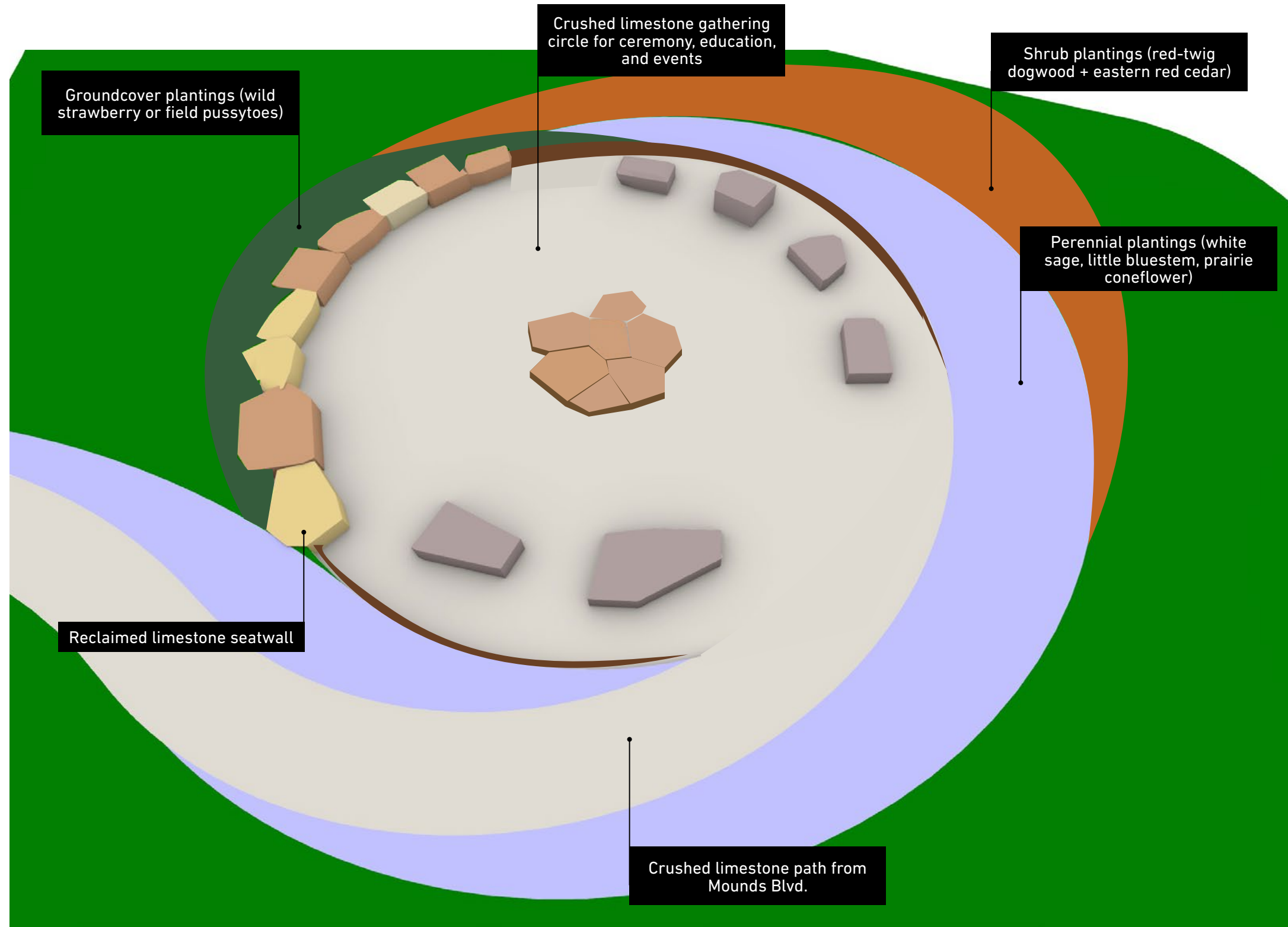


PTEYÁĤOTA / Canada Wild Rye  
*Elymus canadensis*



# PHASE 1 MESSAGING / GATHERING CIRCLE

The Gathering Circle design and messaging are under development. Key themes are "Geologic Time" and "Dakota Land".

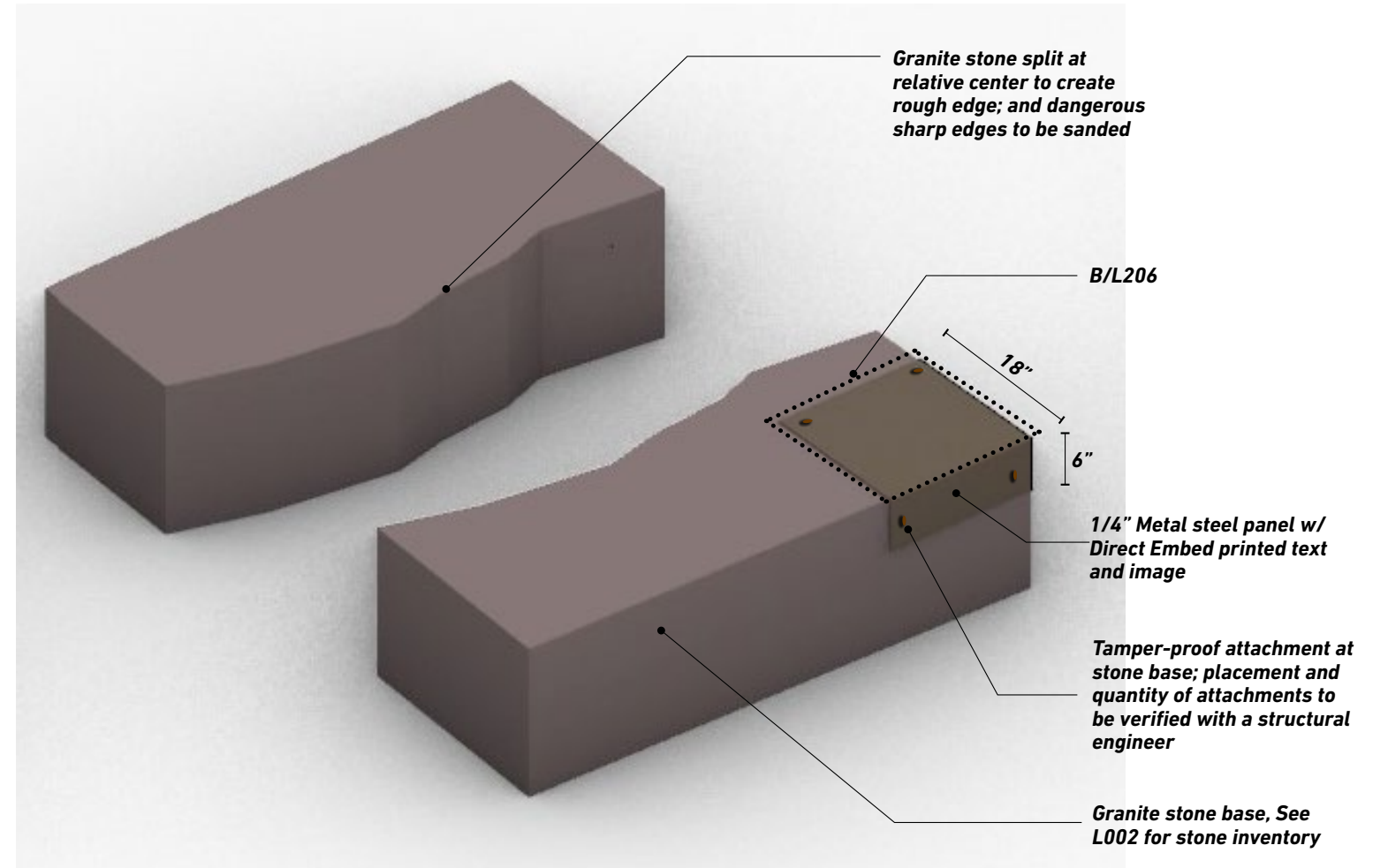
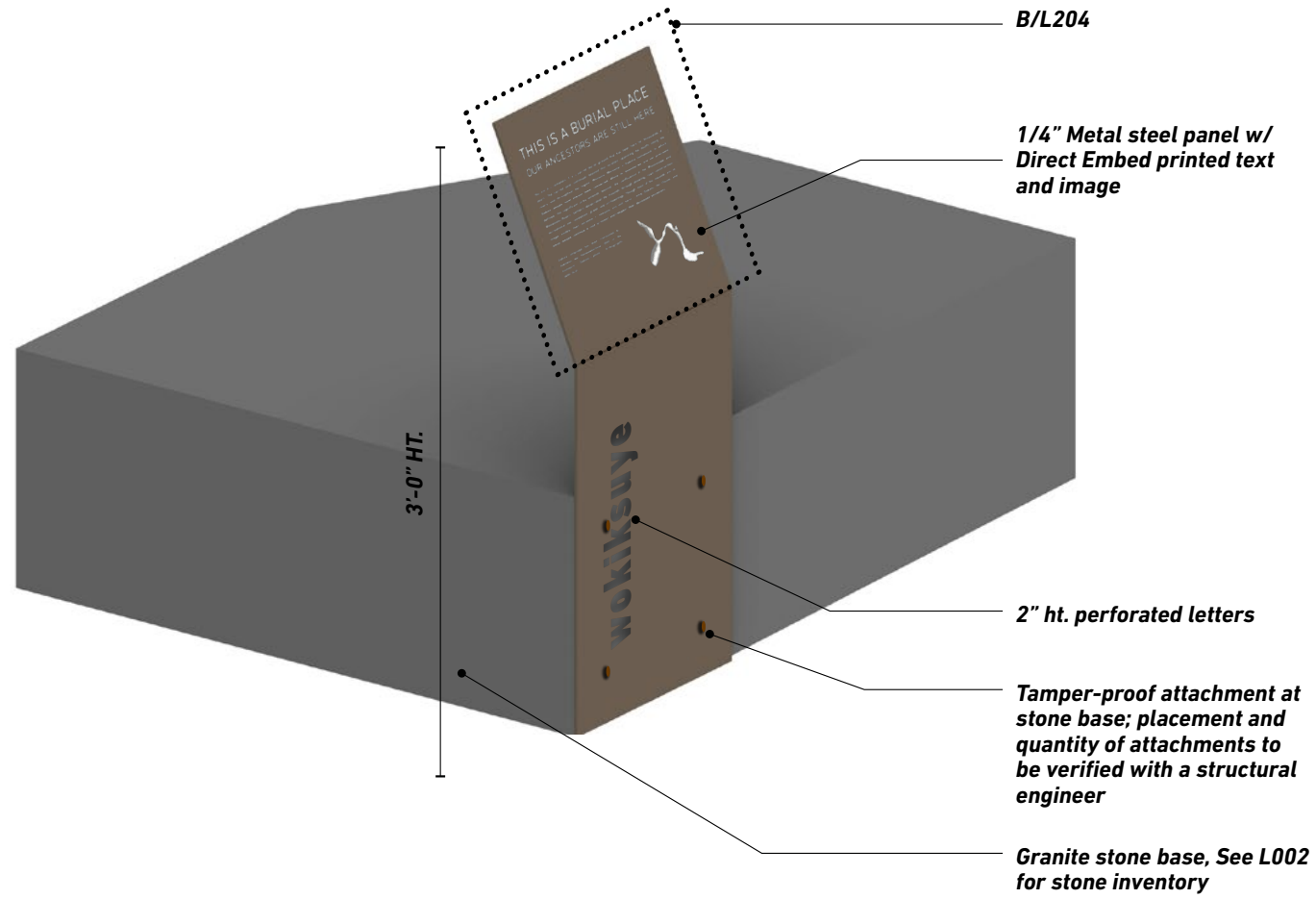


Precedent images of desired material approach



# PHASE 1 MESSAGING / THRESHOLD OF CUES

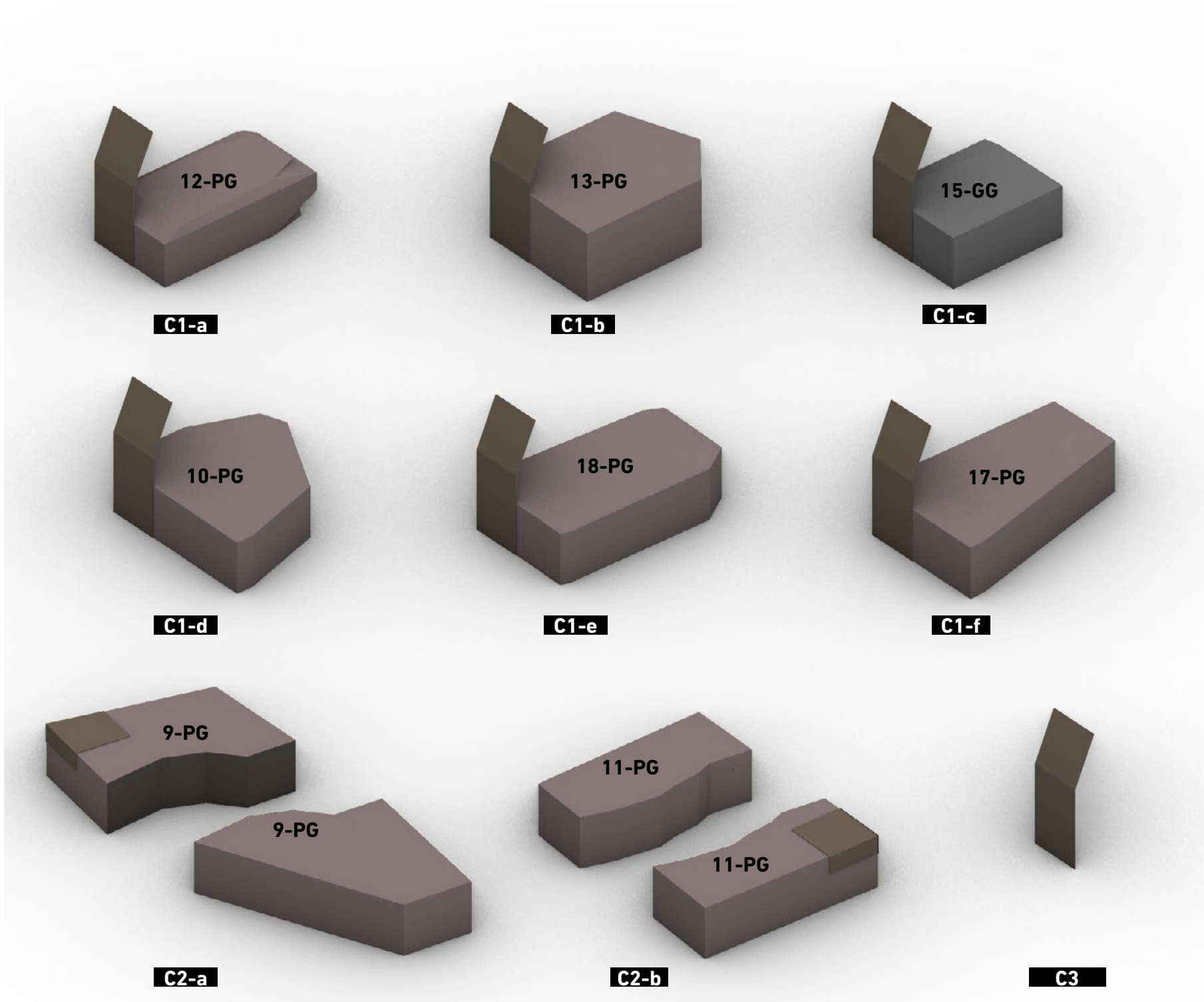
Features and messaging content are under development. Key themes in the Threshold of Cues are "Dakota Land", "Mitákuye Oyás'íŋ", and "Respect and Honor".





# PHASE 1 MESSAGING / THRESHOLD OF CUES

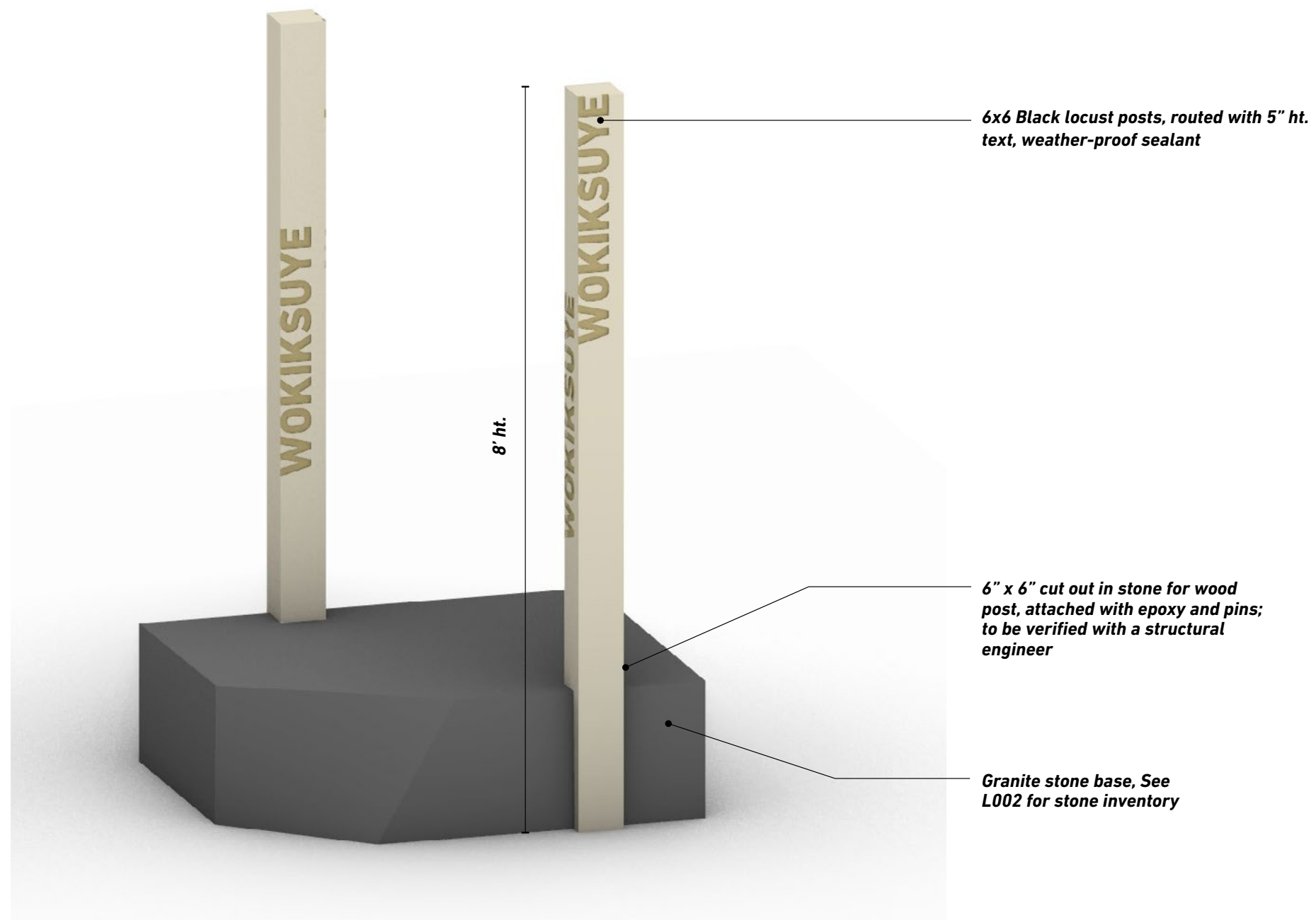
There are 8-10 messaging opportunities currently proposed within the Threshold of Cues. Features and messaging content are under development.



Precedent images of desired material approach



Two gateways are proposed, one at each entrance to Mounds Blvd. Design and messaging are under development, but the key themes are "Dakota Land" and "Respect and Honor".



Precedent image of desired material approach