



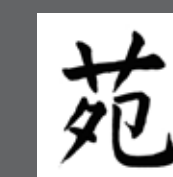
ST. PAUL-CHANGSHA CHINA FRIENDSHIP GARDEN

SISTER-CITIES SINCE 1988

HMONG PLAZA DESIGN OPEN HOUSE - JANUARY 7, 2023

PHALEN REGIONAL PARK
ST. PAUL - CHANGSHA CHINA FRIENDSHIP GARDEN

January 2023



MN CHINA FRIENDSHIP
GARDEN SOCIETY



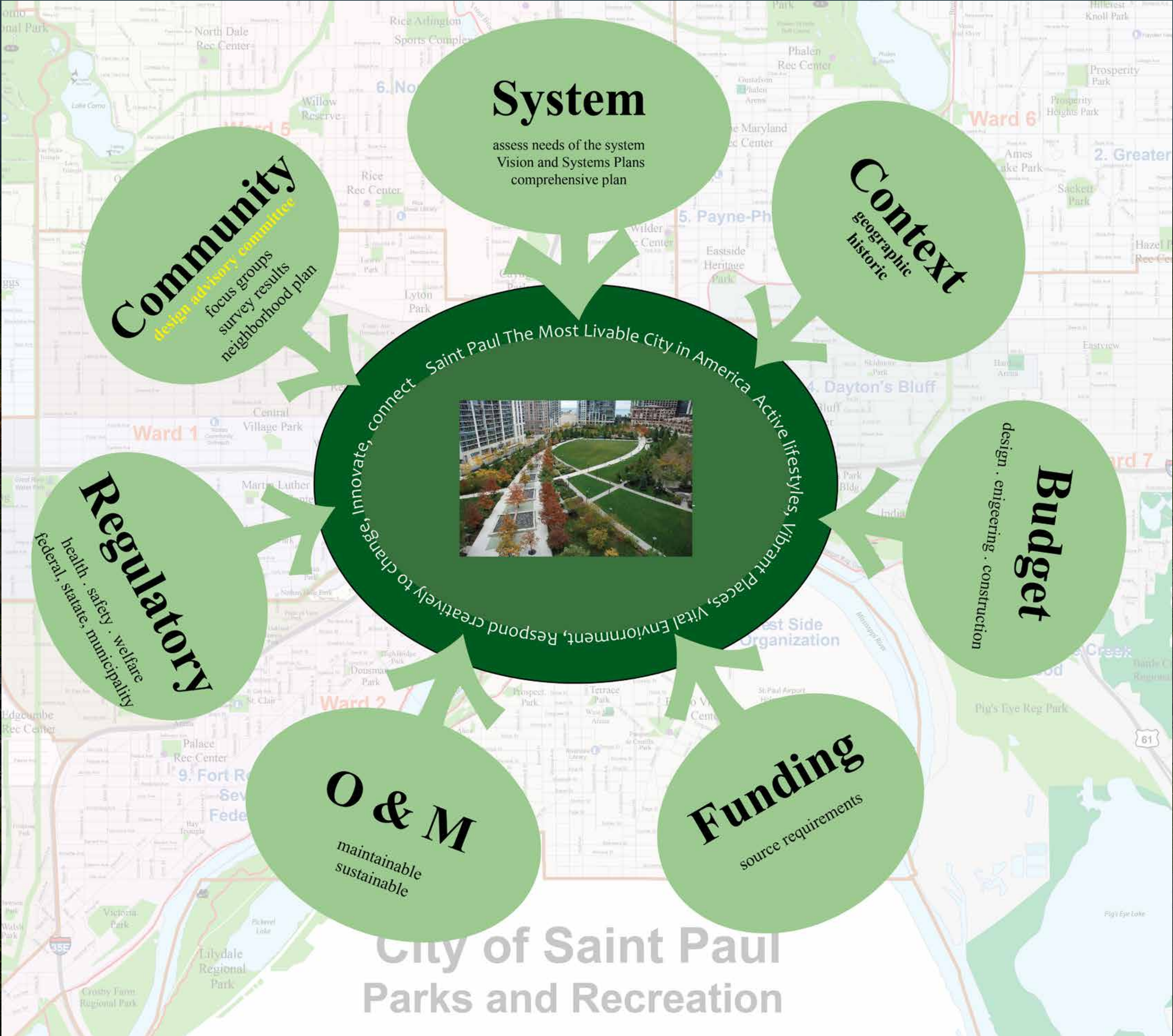
HUNAN JIANKE
LANDSCAPE CO. LTD.



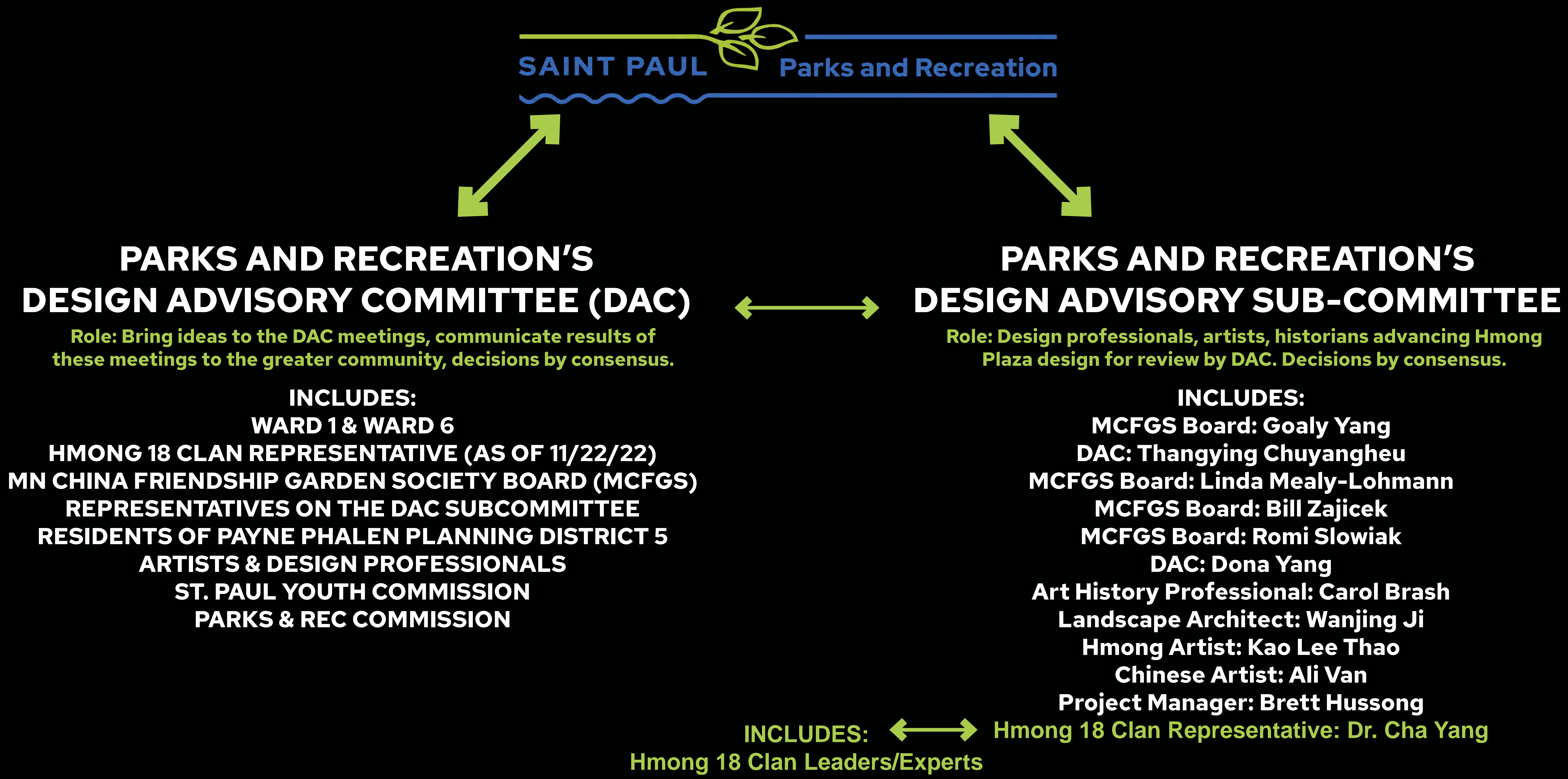
PAUL PARKS AND RECREATION
DESIGN AND CONSTRUCTION

MEETING PURPOSE: INFORM GENERAL PUBLIC ABOUT THE HMONG PLAZA PROCESS, DESIGN AND NEXT STEPS

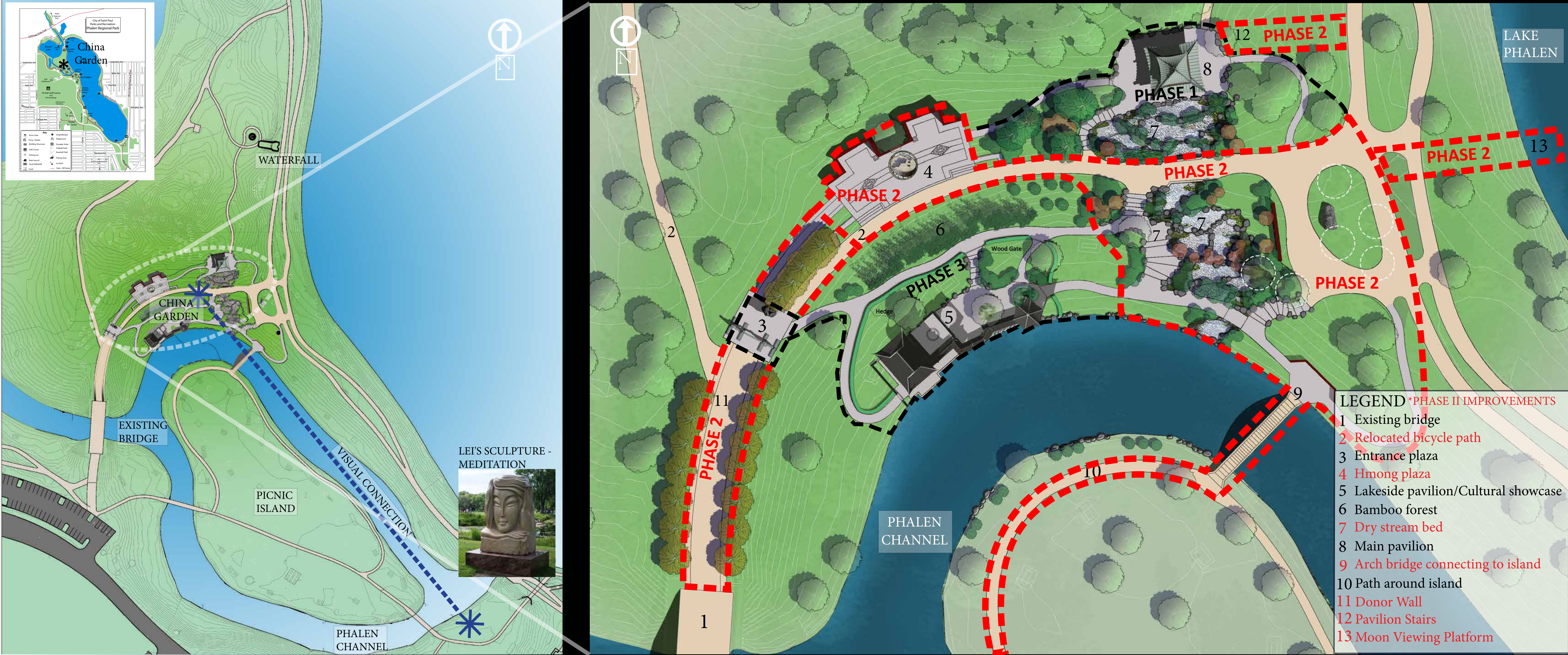
SYSTEM PLAN VISION



DECISION MAKING PROCESS



GARDEN LOCATION AND DESIGN ORGANIZATION



PHASE II FUNDING:
ARTS AND CULTURAL HERITAGE FUND LEGACY (DEADLINE JUNE 2023), STATE BONDING (APPROX. 2025), MCFGS PRIVATE FUNDING

PROJECT TIMELINE:

2017	MASTER PLAN: HMONG PLAZA PROPOSED
2018 - 2021	PHASE I
SEPT '21 - NOV '22	PHASE II HMONG PLAZA DESIGN & COMMUNITY ENGAGEMENT
DEC '22 -MAR '23	HMONG PLAZA CONSTRUCTION DOCUMENTS & BIDDING
MAR-JUN '23	CONSTRUCTION OF HMONG PLAZA & DESIGN OF OTHER PHASE II FEATURES
JUNE 2023	LEGACY FUNDING EXPIRES

SAINT PAUL-CHANGSHA CHINA GARDEN - VIEW TO THE NORTH (2017)



DONOR WALL



MOON BRIDGE



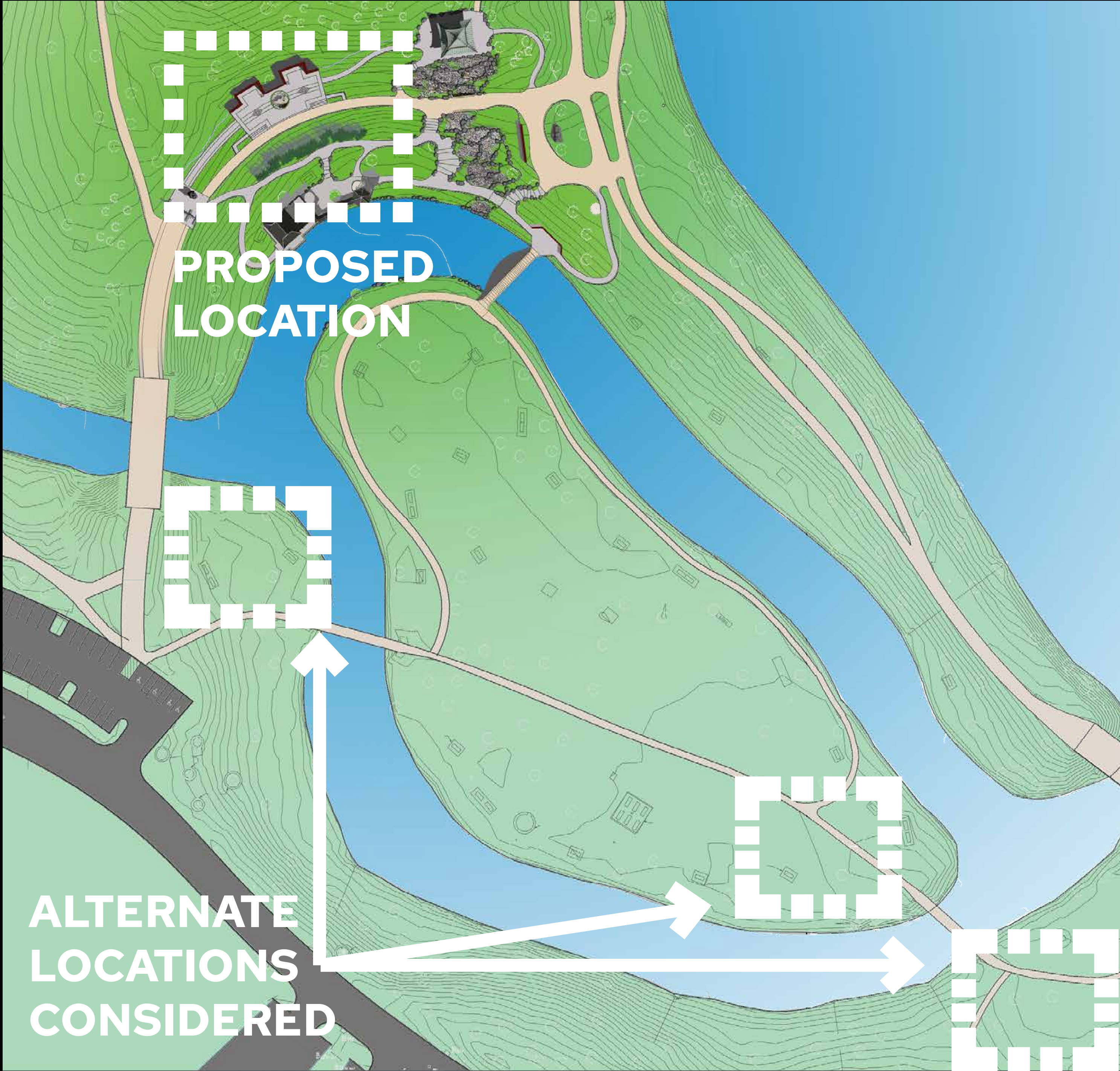
MOON GATE



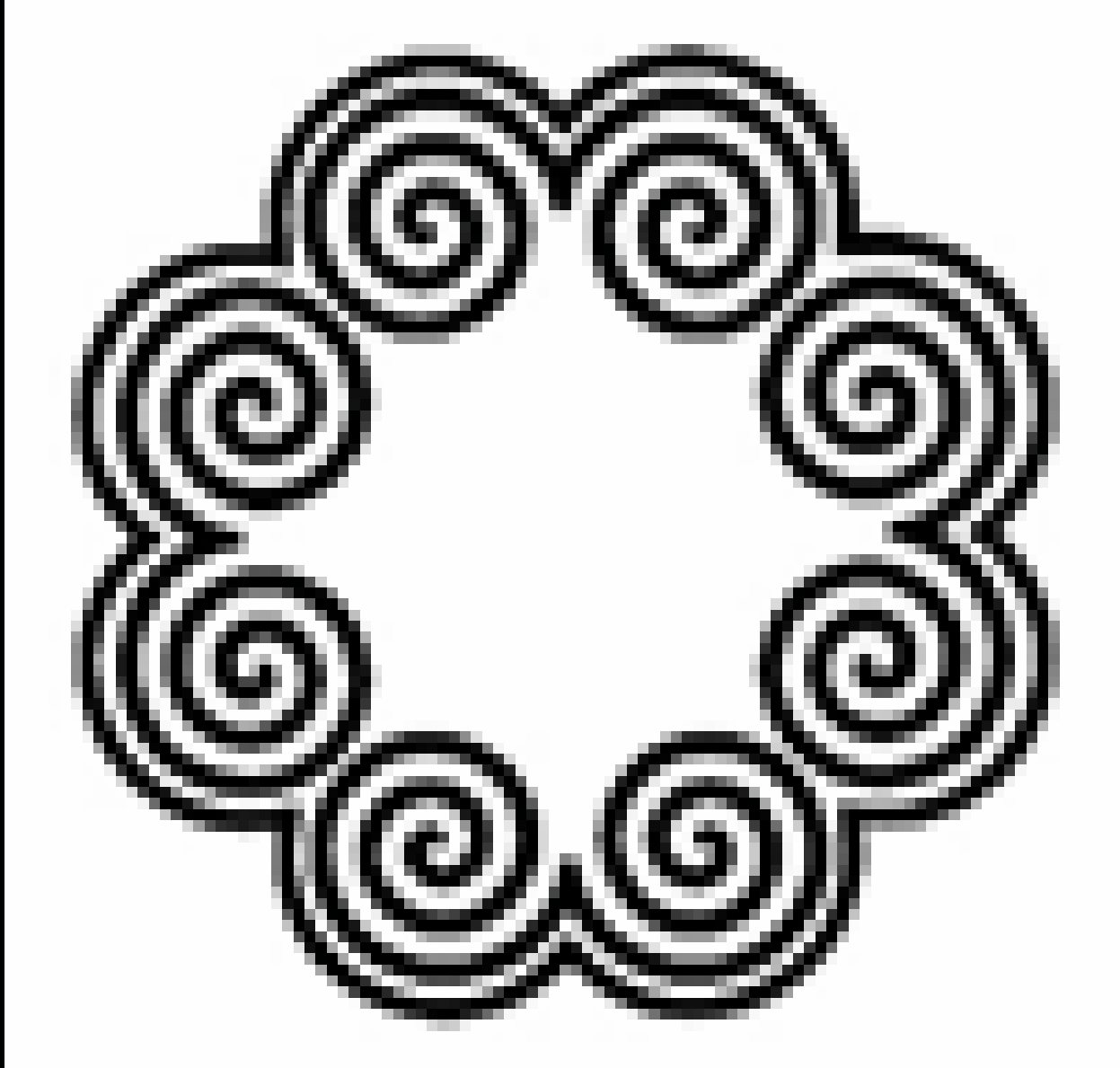
STREAM LANDSCAPE

DAC DESIGN PRINCIPLES:

- LOCATED INSIDE OF GARDEN: PROMOTES FRIENDSHIP, SITE DEDICATION & BLESSING
- OPEN PLAZA LAYOUT FOR MULTI-USE AND OVERFLOW SPACE FOR LARGER EVENTS
- USES LANDFORM: TERRACED TO REFLECT RICE PADDIES AND ELEPHANT FOOT
- INCLUDES RETAINING WALL TO SUPPORT FUTURE HMONG MIGRATION STORY
- BALANCES INTIMACY/HARMONY OF CHINESE GARDEN PRINCIPLES



POTENTIAL PLAZA LOCATIONS



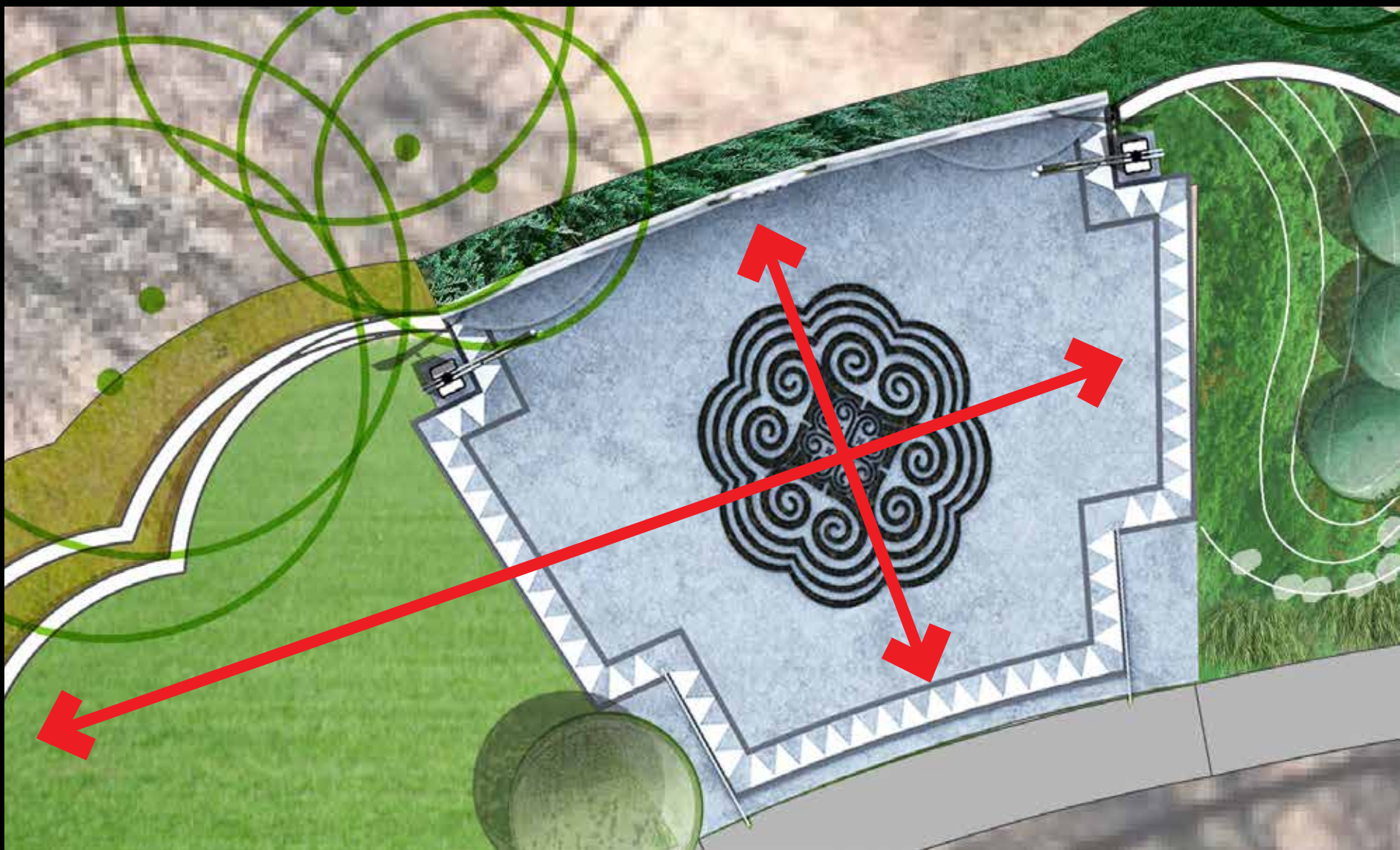
ELEPHANT FOOT



EXISTING CONDITIONS

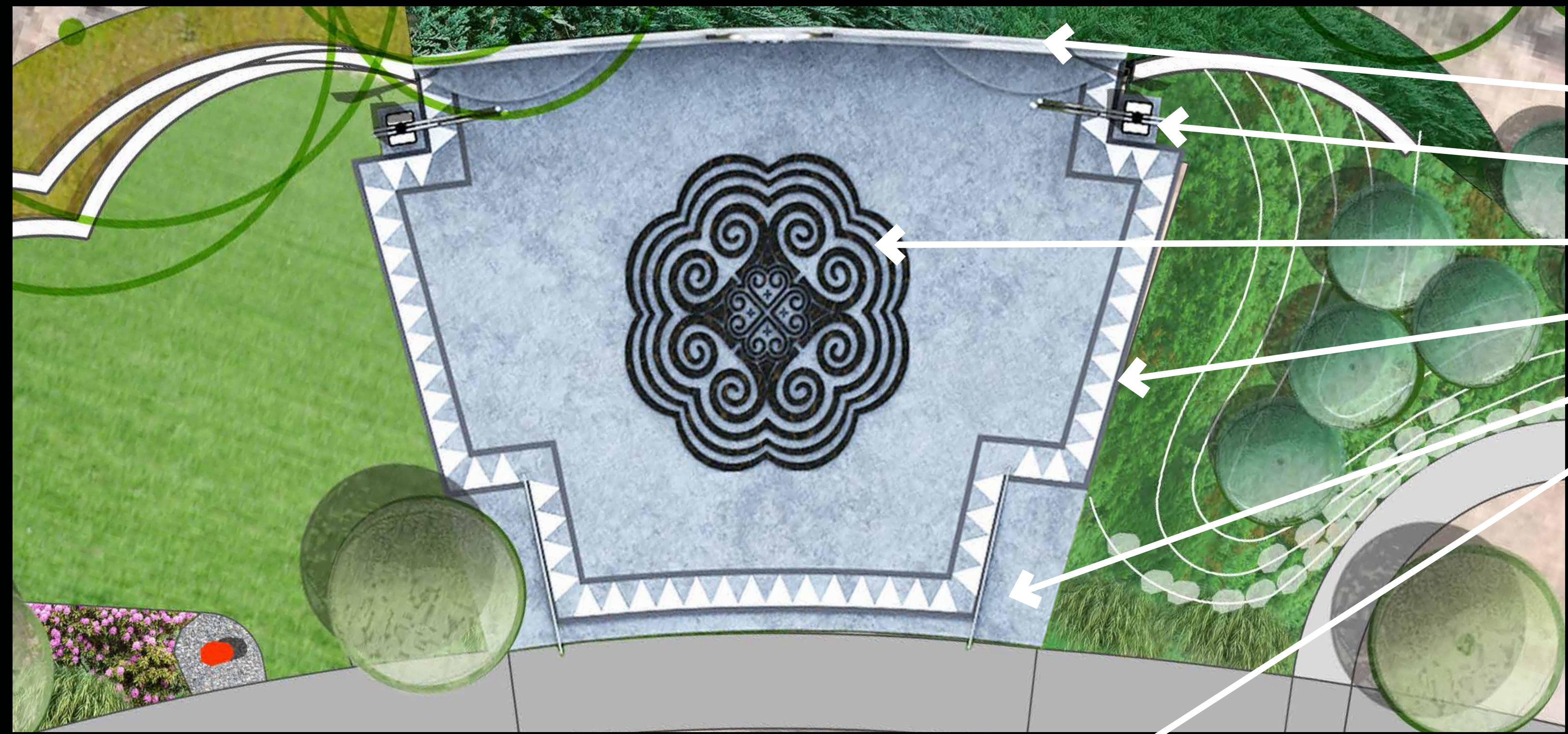


TERRACE



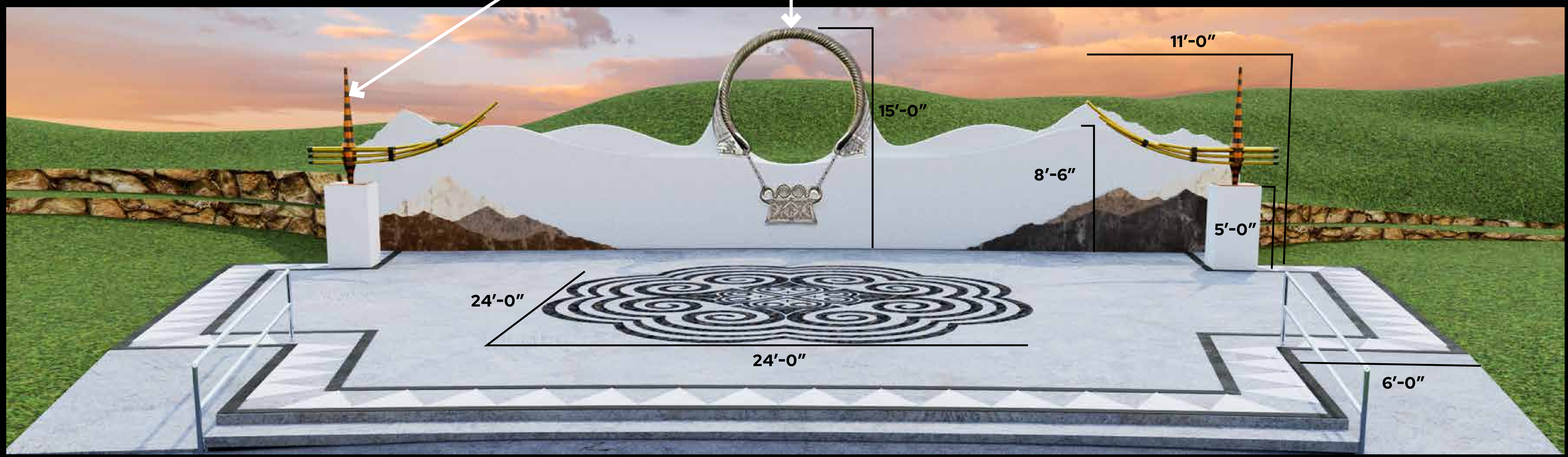
PLAN VIEW

HMONG PLAZA (features are not final and could be built in phases pending cost, fabrication methods and durability)



TOP VIEW

- HMONG PLAZA FEATURES:**
- STUCCO WALL: HMONG MIGRATION STORY (FUTURE)
 - QEEJ (INSTRUMENT)
 - PAJ NTAUB (EMBROIDERY PATTERN)
 - TRIANGLE PATTERN AT EDGE
 - RAISED PLAZA SURFACE WITH ADA RAMP/RAILINGS
 - QEEJ (INSTRUMENT)
 - WOMAN'S NECKLACE & PENDANT
- FEATURES CONSIDERED BUT NOT INCLUDED:**
- HMONG POUNDER, GRINDER, HEADDRESS, HOUSE
 - PHOENIX, BUTTERFLY



FRONT VIEW: LOOKING DOWN ON PLAZA FROM 15'-0" ABOVE

MATERIALS

(features are not final and could be built in phases pending cost, fabrication methods and durability)



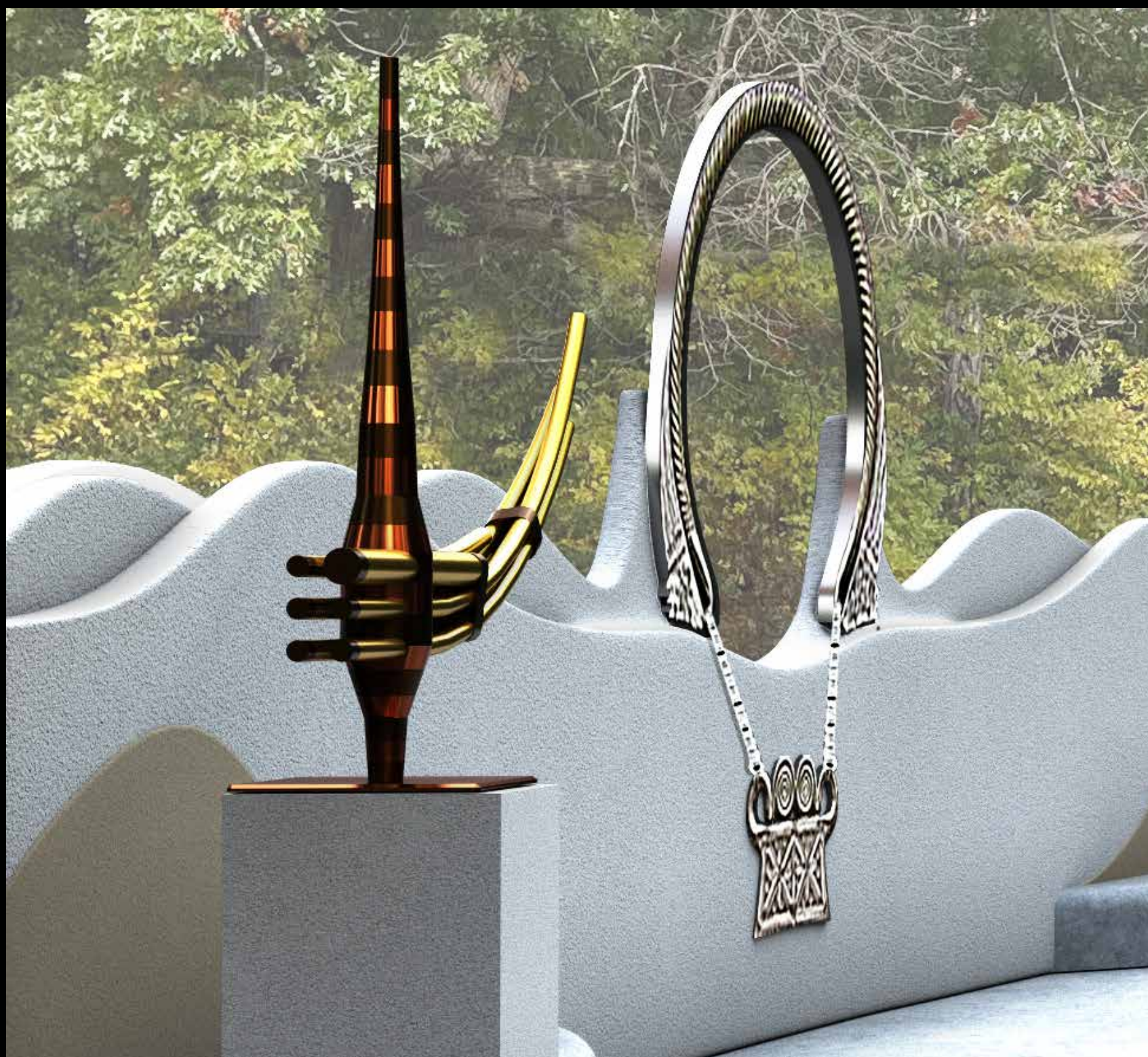
CONCRETE WALL WITH STUCCO FINISH



CONCRETE PLAZA WITH SANDBLAST FINISH



INSPIRATION IMAGES OF NECKLACE



STAINLESS STEEL QEEJ & NECKLACE (PENDING FABRICATION)

HMONG PLAZA - VIEW FROM GATEWAY



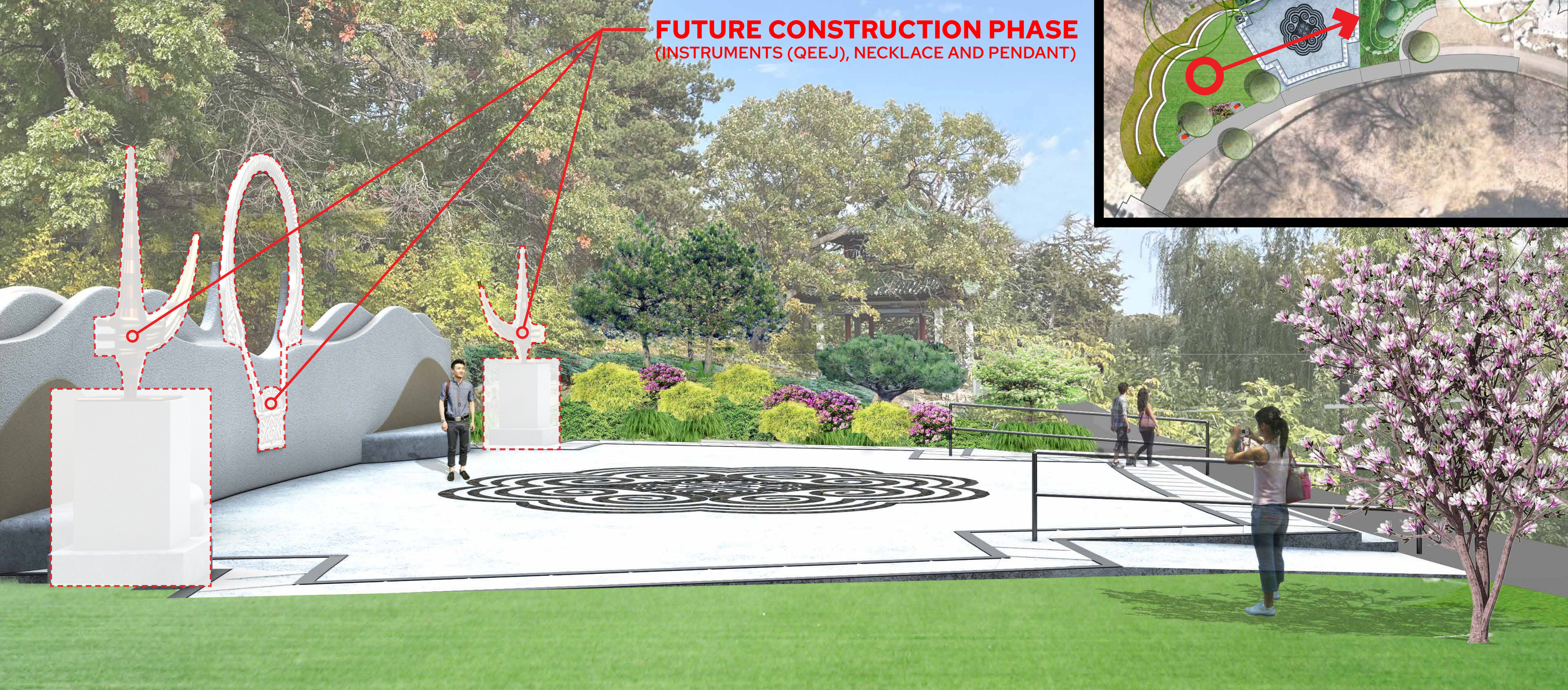
NOTE: IMAGE IS PROPOSED AND FUTURE PLANTINGS/GRADING MAY CHANGE.

HMONG PLAZA - VIEW FROM OVERFLOW



NOTE: IMAGE AS A PLACEHOLDER AND NOT TO SCALE. FUTURE PLANTINGS MAY CHANGE.

HMONG PLAZA - PHASING



**PHASE 1 CONSTRUCTION PRIORITIES INCLUDING THE PLAZA AND WALL(S).
HIGHLIGHTED ABOVE ARE SECONDARY PRIORITIES INCLUDING THE INSTRUMENTS (QEEJ), NECKLACE AND PENDANT.
FEATURES ARE NOT FINAL AND COULD BE BUILT IN PHASES PENDING COST, FABRICATION METHODS AND DURABILITY.**

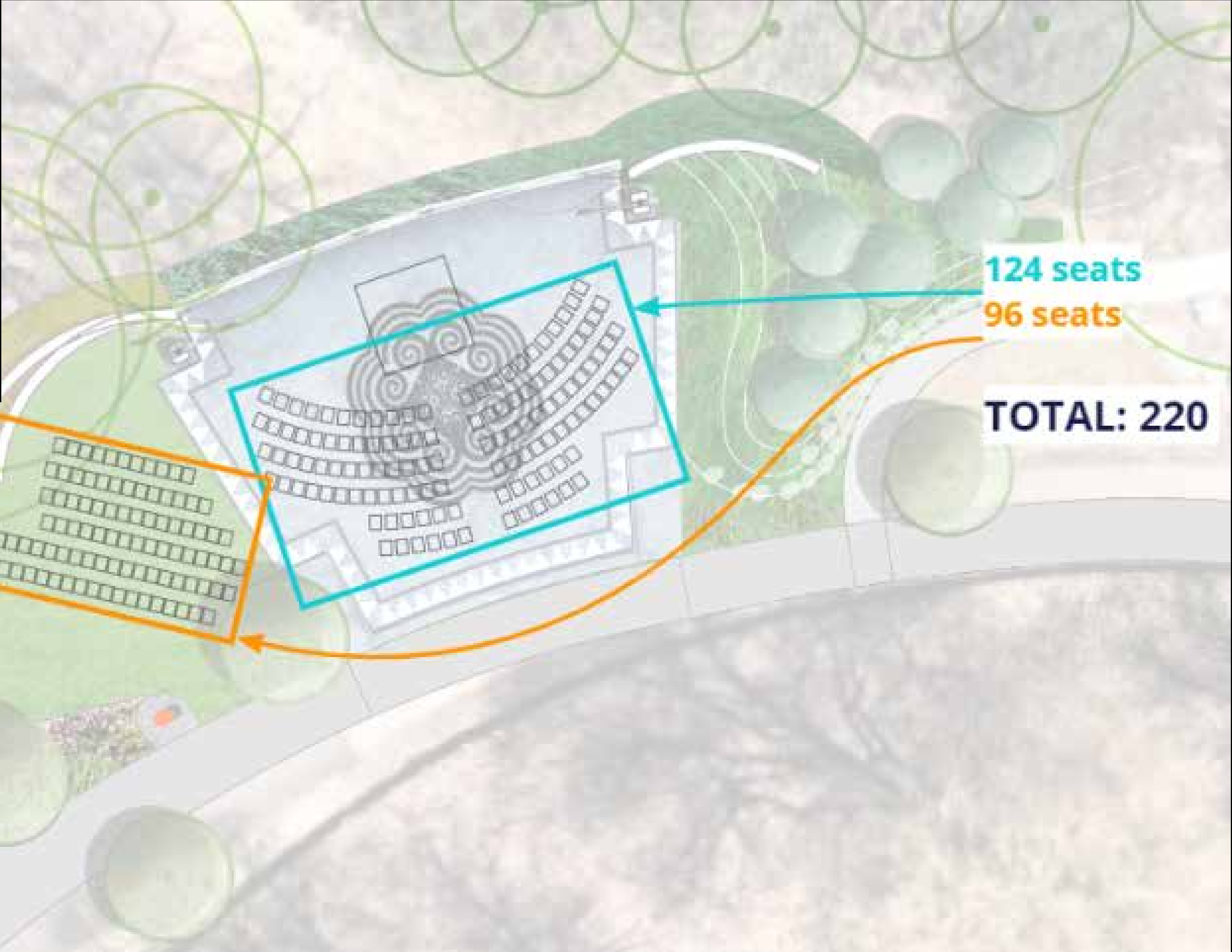
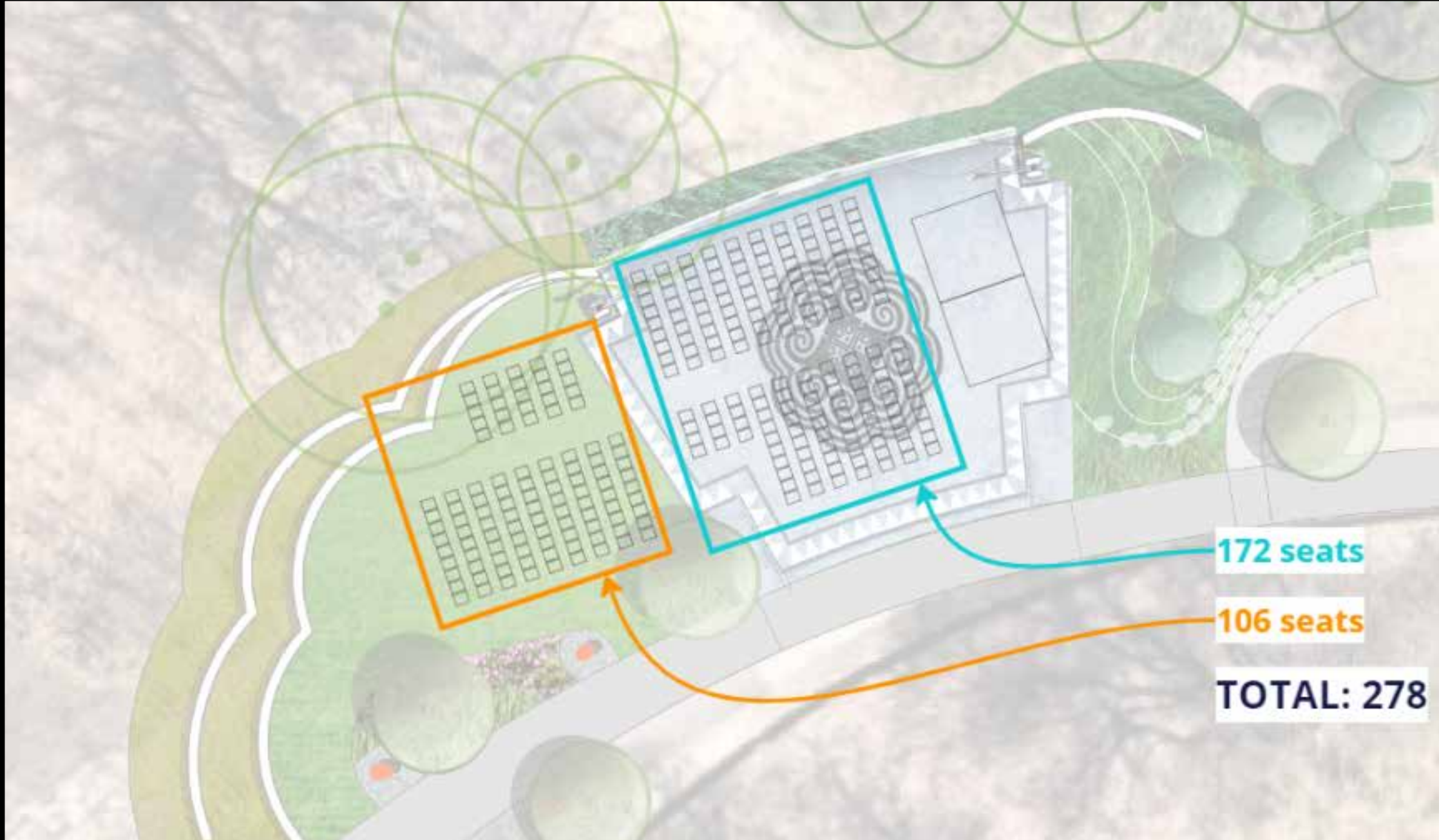
HMONG PLAZA - VIEWS



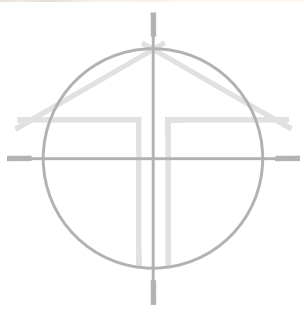
DESIGN PRINCIPLES

- BALANCE INTIMACY AND HARMONY OF INDIVIDUAL GARDEN SPACES
- VEGETATION IS USED TO DIRECT VIEWS AND TO HIGHLIGHT FOCAL POINTS

HMONG PLAZA - LAYOUT



L6 LAYOUT PLAN
SCALE: 1" = 10'-0"



NEXT STEPS



Tentative Phase II Project Timeline

We are here
→

- | | |
|--------------------------|---|
| • Oct '21 - Nov '22 | Design Advisory Cmte Engagement for Hmong Plaza Feature |
| • December 18 | Hmong 18 Clan Leaders Review |
| • January 7, 2023 | Public Engagement for Hmong Feature |
| • Dec-Jan 2023 | Hmong Plaza Construction Documents |
| • Feb or Mar | Design Advisory Cmte & Public Engagement for other Features of Phase II |
| • Feb-Mar 2023 | Hmong Plaza Project Bidding |
| • Apr-Jun 2023 | Hmong Plaza Construction (pending bids) |
| • June 2023 | Arts and Cultural Legacy funding deadline |
| • Late Summer 2023 | Building Bridges Capital Campaign kickoff |

MCFGs CAPITOL CAMPAIGN

The Minnesota China Friendship
Garden Society

柳明園
LIU MING YUAN PHASE II

**BUILDING BRIDGES
CAPITAL CAMPAIGN**



The Minnesota China Friendship Garden Society is a
501c(3) Non-profit | Donations are tax-deductible

柳明園 **Liu Ming Yuan**

St. Paul-Changsha China Friendship Garden of
Whispering Willows & Flowing Waters,
Phalen Regional Park, St Paul, MN

Support Needed for Phase II Garden Features:

**Hmong Plaza
Chinese Moon Bridge
Moon Gate Entrance
Moon Viewing Platform
Donor Wall
Chess Table & Seating Area
Xiang Jiang Mountain Stream**

BECOME A BRIDGE BUILDER!

Building Bridges Capital Campaign Donors
of \$2,000 or more

will have their names engraved as
Bridge Builders

on the permanent Donor Wall at Liu Ming Yuan

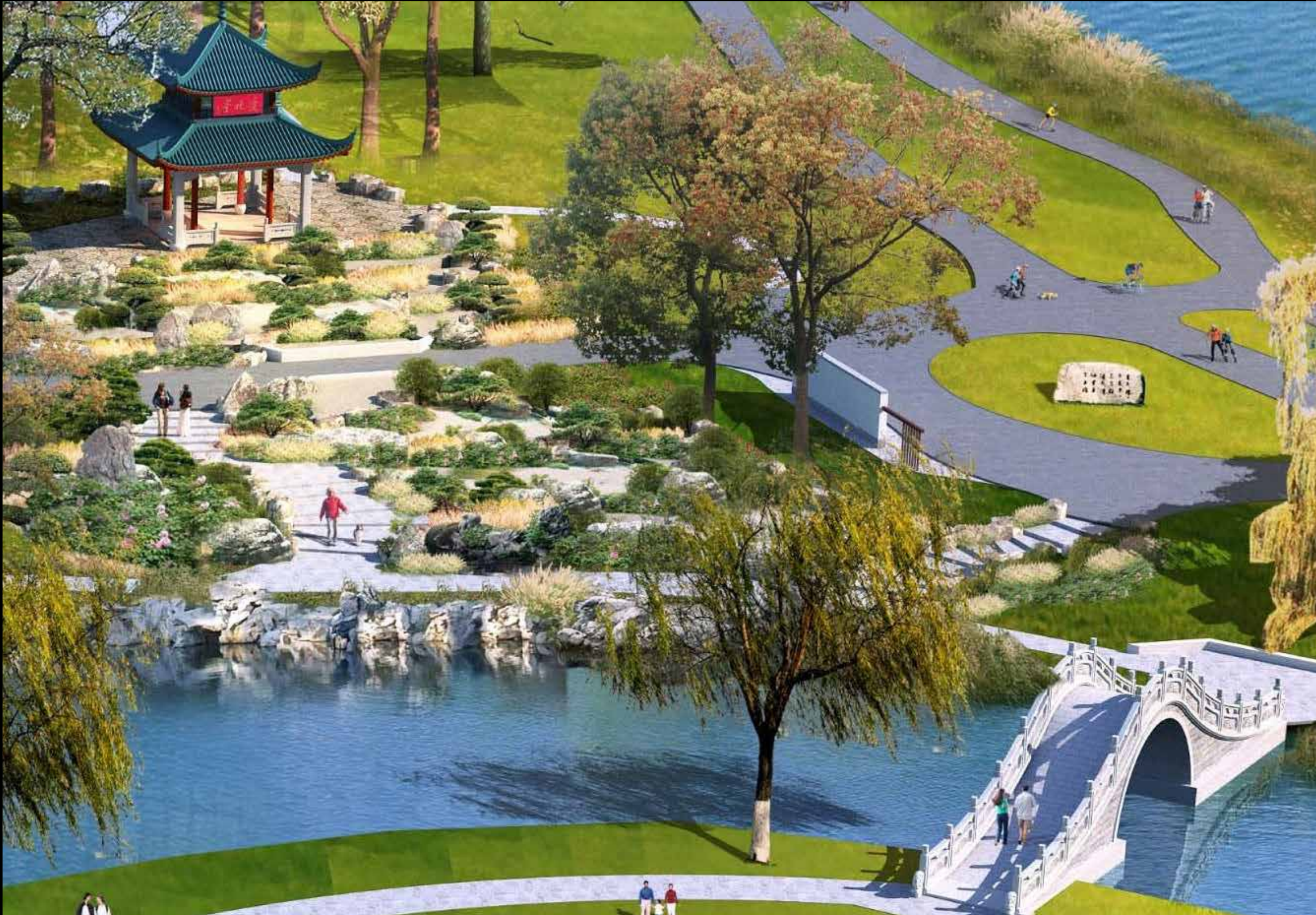
Construction to begin in 2023 as funding allows

DONATE BY CHECK payable to: MN China Friendship Garden Society

Mail check to: 1492 E Shore Drive, St. Paul, MN 55106

Find other donation options at: <http://mnchinagarden.org/donation-options/>

XIANG JIANG MOUNTAIN STREAM LANDSCAPE - FUTURE PHASE



2017 MASTER PLAN



STREAM BED AND BRIDGE

PAVILION WALKWAY & CHESS TABLE - FUTURE PHASE



EXISTING CONDITION



VIEW LOOKING WEST

MOON GATE - FUTURE PHASE



CONCEPTUAL RENDERING - LOOKING WEST TOWARD MOON BRIDGE

MOON BRIDGE - FUTURE PHASE

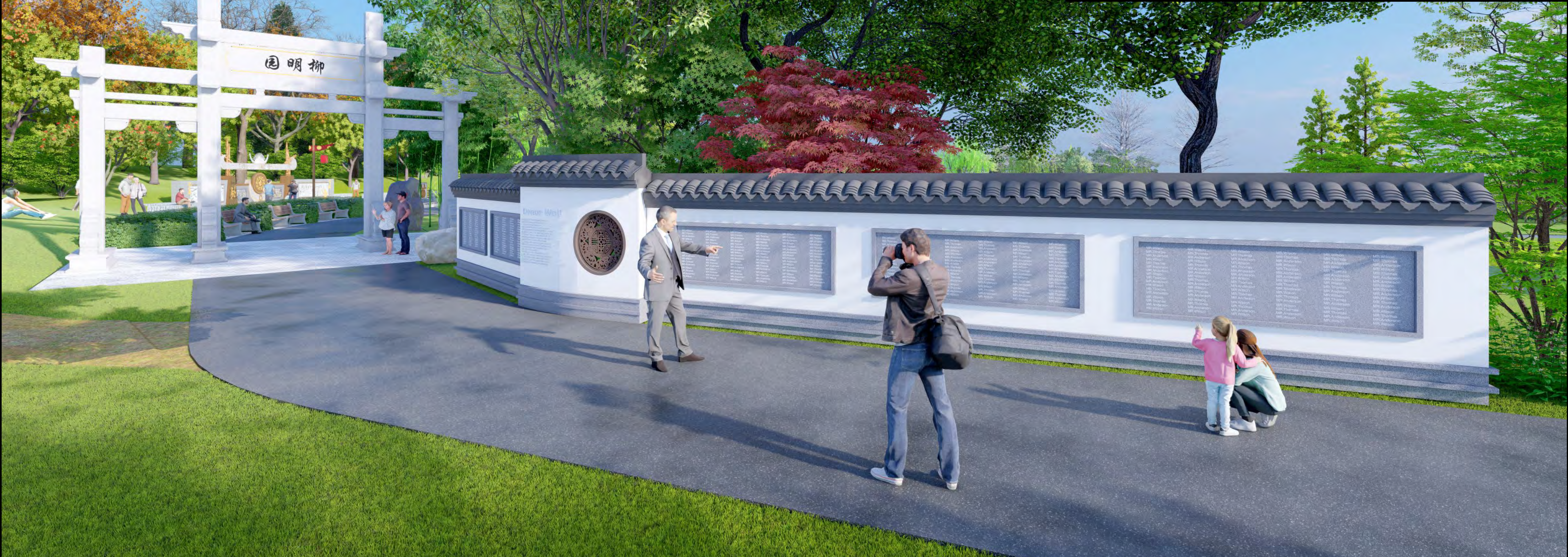
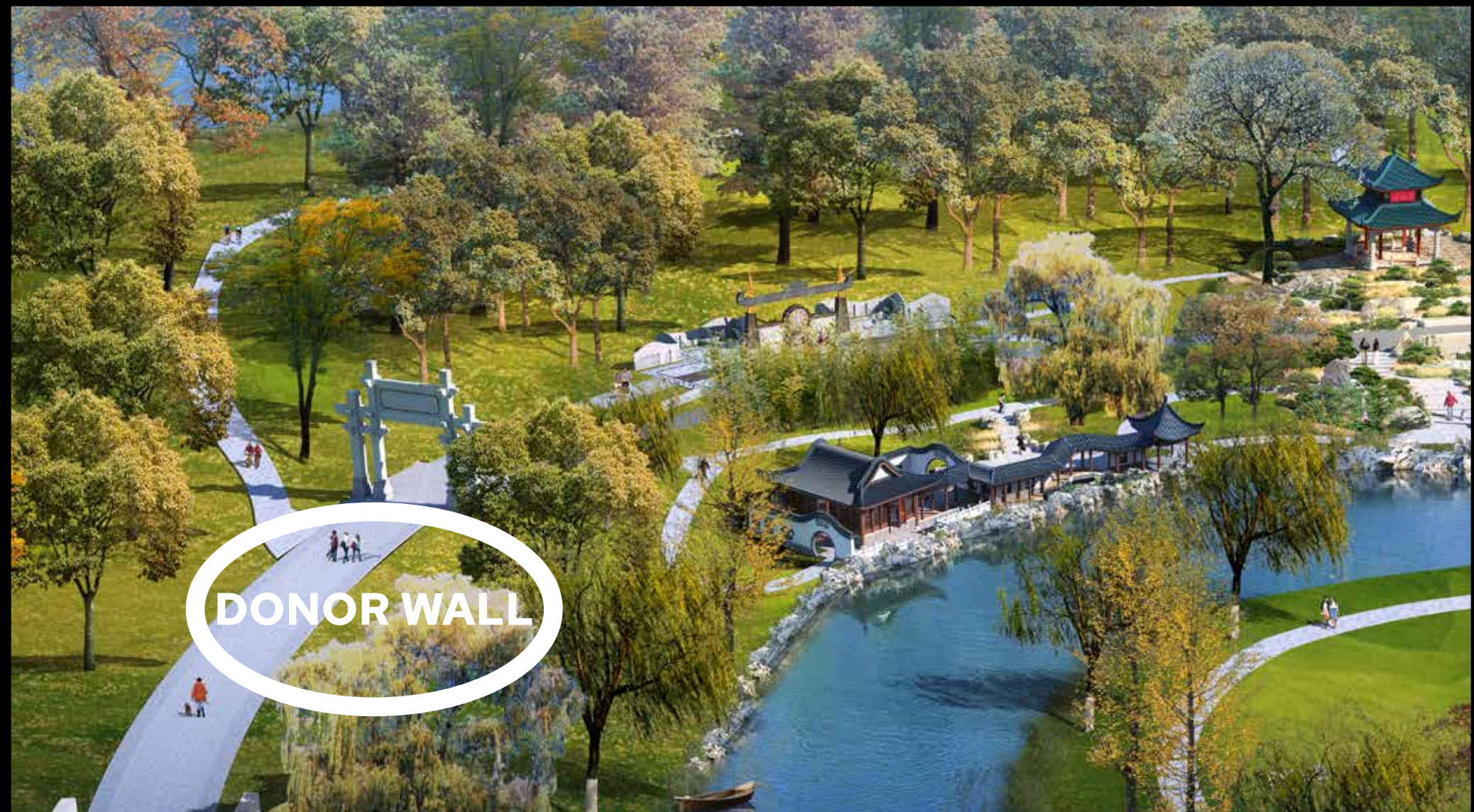


CONCEPTUAL RENDERING



STAIRS

DONOR WALL - FUTURE PHASE



CONCEPTUAL RENDERING - LOOKING NORTH TOWARD GATEWAY

THANK YOU!

PROJECT CONTACT: Brett.Hussong@ci.stpaul.mn.us

PROJECT WEBSITE: www.stpaul.gov/phalenchinagarden