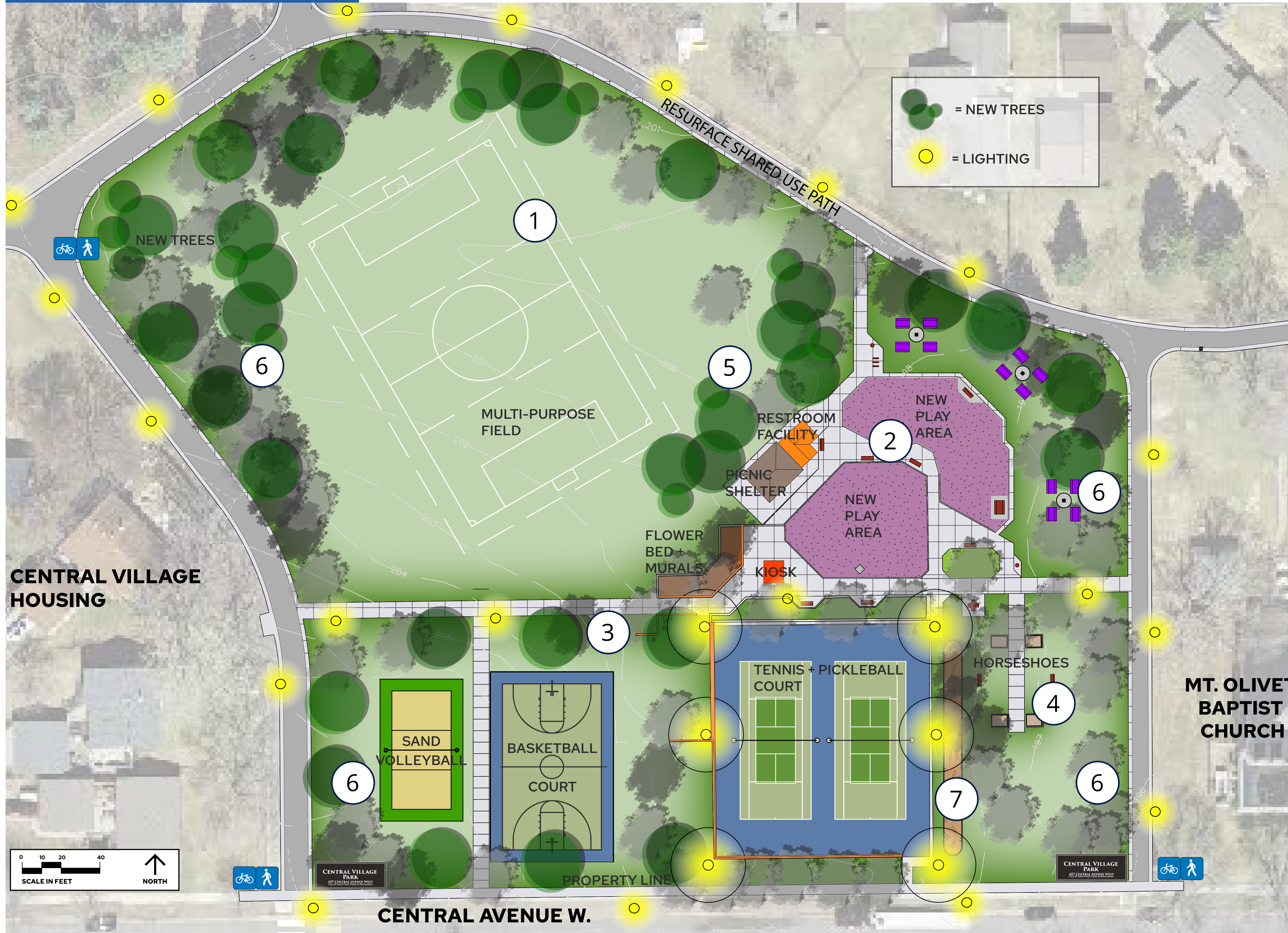


CONCEPT 2A



= NEW TREES
 = LIGHTING



Replace Play Area Surface



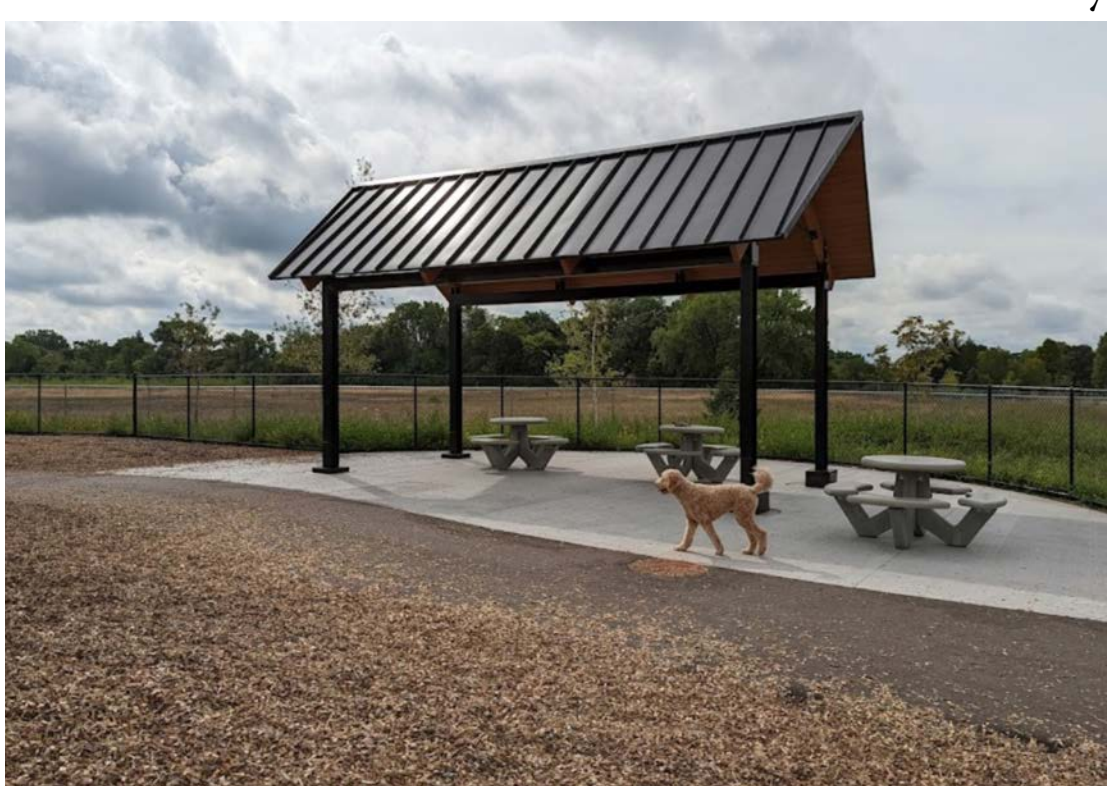
Sand Volleyball Court



New Basketball Court



Restroom Facility



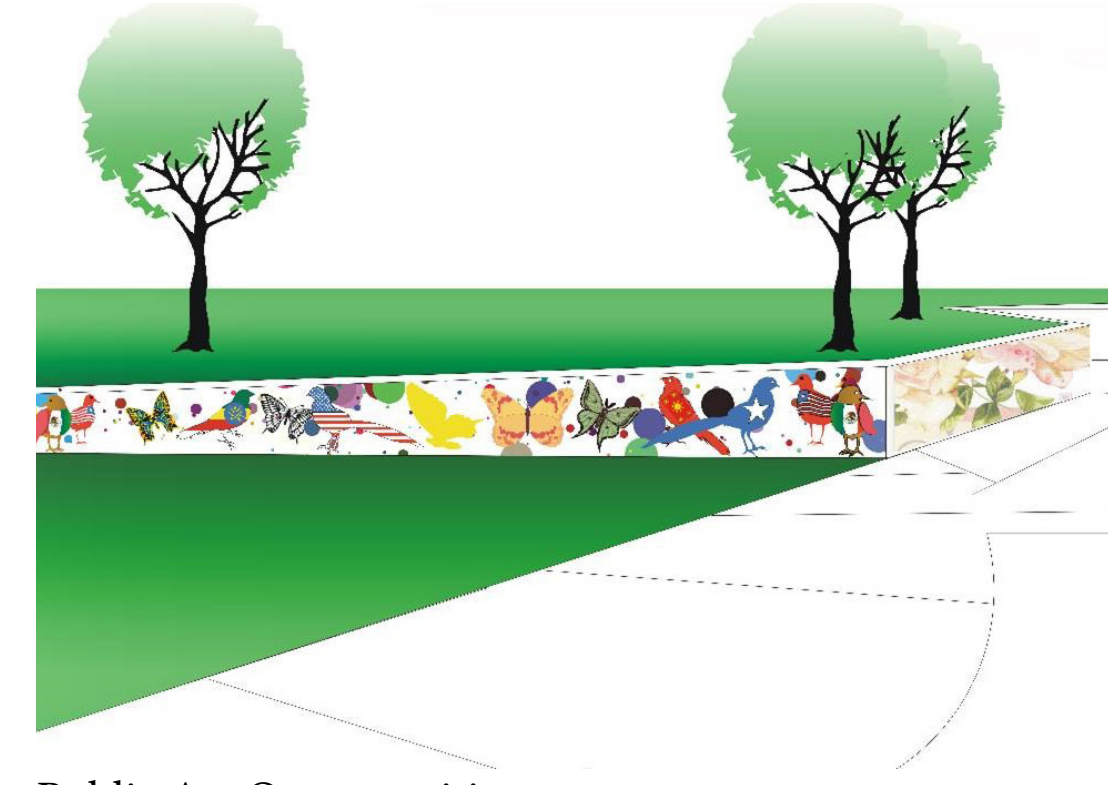
Covered Picnic Shelter



Update Horseshoe Courts



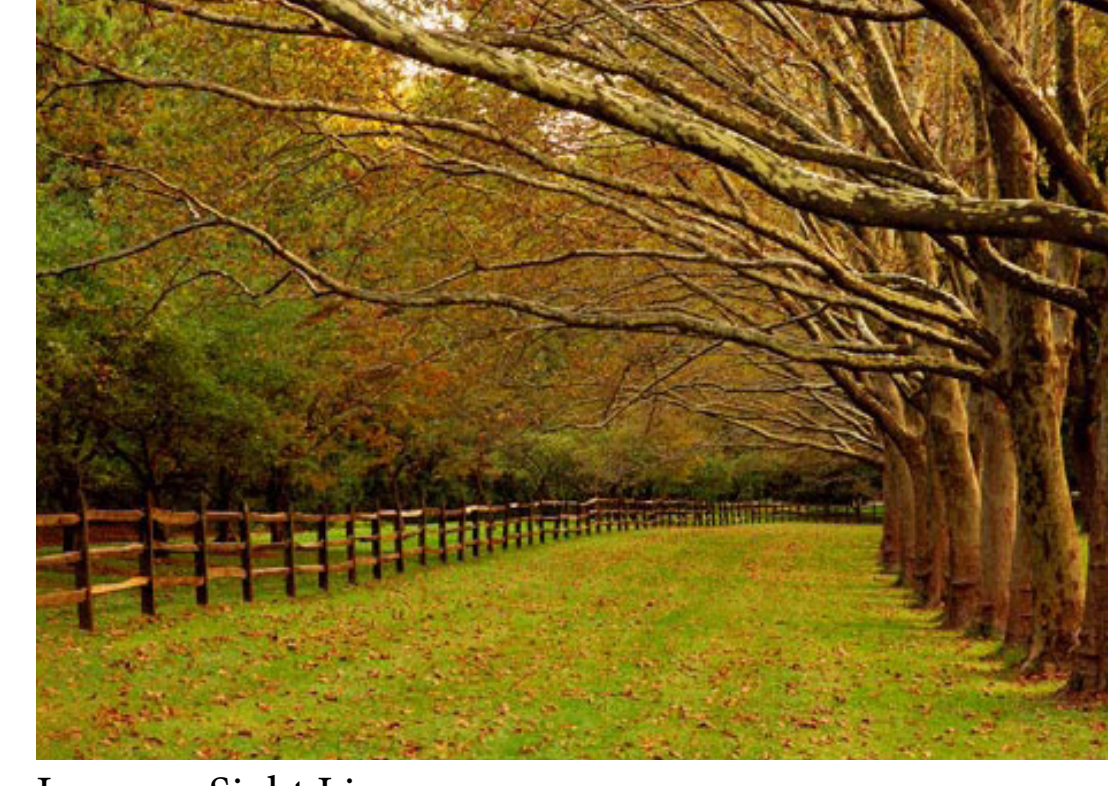
Replant Flower Beds



Public Art Opportunities



Information Kiosk



Improve Sight Lines

Notable Changes From Concept 1.0:

1. ORIENTED SOCCER FIELD OFF-AXIS TO BETTER FIT SITE.
2. NEW PLAY EQUIPMENT IN ADDITION TO REPLACED SURFACE.
3. BASKETBALL COURT PLACED WITH CLEAR SIGHT LINES FROM CENTRAL AVE AND AWAY FROM NEIGHBORS.
4. HORSESHOE COURT REMAINS IN CURRENT LOCATION.
5. RESTROOM FACILITY AND PICNIC SHELTER MOVED CLOSER TOGETHER.
6. RAISE LOW-HANGING TREE LIMBS AND PLACE PATH LIGHTING TO IMPROVE SIGHT LINES.
7. NEW PLANTING BEDS / RAIN GARDENS



PARKS AND RECREATION DEPARTMENT
DESIGN AND CONSTRUCTION DIVISION

OPEN HOUSE | JANUARY 2023
CENTRAL VILLAGE PARK