



2023 RESIDENT GUIDE

Recycling Program Information

Garbage Program Rates and Services

Waste Reduction Opportunities



SAINT PAUL
PUBLIC WORKS

[STPAUL.GOV/PUBLICWORKS](https://stpaul.gov/publicworks)

***INSIDE:** Important updates about
recycling and garbage services in 2023*



RECYCLING & GARBAGE SERVICES

The City of Saint Paul's Recycling and Garbage Programs provide education and resources for residents to reduce, reuse, recycle, and safely dispose of materials to promote a sustainable and healthy community for all. Saint Paul contracts with several haulers to provide citywide recycling and garbage collection services to residents living in 1-4 unit properties.

Where does my garbage and recycling go?

Recyclables are processed and sorted at Eureka Recycling's Material Recovery Facility and transported to markets in the Twin Cities metro area, the Midwest, and North America to be made into new consumer products.

Garbage collected in the City of Saint Paul goes to the Ramsey/Washington Recycling & Energy Center (R&E Center). The material is processed to produce fuel used by Xcel Energy to generate electricity. Learn more at recyclingandenergy.org.



2023 PROGRAM CHANGES

There will be changes to the citywide Recycling and Garbage Programs in 2023. The City's two current contracts for recycling and garbage collections expire in May and October, respectively. The City will mail updates to residents about program changes when they are finalized.

Stay up-to-date by visiting stpaul.gov/recycle and stpaul.gov/garbage.



CONTACT INFORMATION

Recycling

For service-related questions contact Eureka Recycling at 651-222-7678 or email at info@eurekarecycling.org.

For additional waste reduction, recycling, and disposal information, contact Saint Paul's Recycling Program at 651-266-6199, email recyclingprogram@ci.stpaul.mn.us, or visit stpaul.gov/recycle.

Garbage

Call your garbage hauler for service and billing questions. To find your garbage hauler, visit stpaul.gov/garbagemap.

For additional garbage program related questions, contact Saint Paul's Garbage Program at 651-266-6101, email garbage@stpaul.gov, or visit stpaul.gov/garbage.

Ramsey County

For additional waste reduction, recycling, and disposal information, contact the Recycling & Disposal Hotline at 651-633-EASY (3279), answered 24/7, or visit RamseyRecycles.com.



Aspen Waste Systems:	612-884-8008
Gene's Disposal Service:	651-426-1224
Highland Sanitation:	651-458-0043
Republic Services:	651-286-4590
Waste Management:	763-784-8349



RECYCLING GUIDE

#1, #2, and #5 Plastic Containers

Empty and rinse. Replace caps.



Bottles and jugs:

- Water, soda, and juice bottles
- Milk and juice jugs
- Shampoo, soap, and lotion bottles

Cups and containers:

- Pudding and fruit cups
- Cottage cheese and yogurt tubs
- Clear plastic produce and clamshell containers

NO: #3, #4, #6, #7 or black plastic, plastic bags, plastic film/wrappers, Styrofoam™, or containers larger than 3 gallons

Metals

Empty and rinse.



- Food and beverage cans
- Aluminum foil and trays
- Pie tins and decorative tins smaller than 3 gallons
- Empty aerosol cans

NO: Aerosol cans that contain hazardous or flammable materials like paint, spray paint cans, propane cylinders, or helium tanks



**Do not put recyclables
in plastic bags**

Paper and Boxes

Flatten boxes.



- Office paper, magazines, newspaper, and books
- Corrugated cardboard
- Cereal, toiletry, and shoe boxes
- Cardboard pizza delivery boxes

NO: Shredded paper, paper egg cartons, paper plates, napkins, or frozen food boxes

Glass

Empty and rinse. Remove caps.



- Food and beverage bottles and jars

NO: Drinking glasses, window glass, ceramics, or mirrors

Cartons

Empty and rinse. Replace caps.



- Milk cartons
- Juice boxes
- Soup, broth, and wine cartons

NO: Paper or Styrofoam™ egg cartons or ice cream cartons



NEEDS SPECIAL DISPOSAL

These items can be harmful to the environment when not handled properly, cause damage to equipment, and injure employees at processing facilities.

Find locations for correct disposal at
RamseyRecycles.com/AtoZ.



Household Hazardous Waste

Batteries

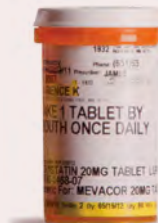
Propane Tanks



Electronics



Construction and Demolition Materials



Medicine



Can I put this in my
recycling cart?



NO



NO



NO



NO



Can I put this in my
garbage cart?



NO

Contact your garbage hauler
for collection under Bulky Item
pick-up. 2-3 Items included for
no cost. stpaul.gov/bulky



NO



NO



Cost and
Disposal Options

No cost

Ramsey County
Hazardous Waste
5 Empire Dr,
St. Paul, MN 55103

RamseyRecycles.com/HHW

No cost

Repowered
860 Vandalia St,
St. Paul, MN 55114

Ramseycounty.us/Electronics

Fee charged

Bring to a disposal company
or transfer station for a fee.

RamseyRecycles.com/AtoZ

No cost

Ramsey County
Law Enforcement Center
425 Grove St.
St. Paul, MN 55104

RamseyRecycles.com/Medicine



**Sharps and
Needles**



No cost

Ramsey County
Hazardous Waste
5 Empire Dr,
St. Paul, MN 55103

RamseyRecycles.com/HHW



**Plastic Bags
Bubble Wrap
Plastic Film**



Clean and dry plastic bags
and film can be dropped off
at grocery or retail stores
for recycling at no cost.
Find locations at
plasticfilmrecycling.org.
Use reusable bags when
possible to reduce waste.



**Cords and
Tangles**



Find year-round
recycling locations at
RamseyRecycles.com/AtoZ

Drop off at recycling collection
boxes at all Saint Paul libraries
from November 28 to January 20.
stpaul.gov/recyclingholidaylights



Scrap Metal



Scrap metal items such as pipes
and fencing cannot be put in
garbage carts. Scrap metal items
such as pots, pans, or hangers
can go in the garbage cart.

Find recycling
drop-off options at
RamseyRecycles.com/AtoZ



Can I put this in my
recycling cart?



Can I put this in my
garbage cart?



**Cost and
Disposal Options**



If your cart(s) is damaged because of animals, accidents, or regular wear and tear, it will be repaired or replaced at no charge. Residents can change their garbage cart size one time per calendar year at no additional cost.

Contact Recycling and Solid Waste Services at 651-266-6101 or use the online form at **stpaul.gov/publicworks**.

Correct Cart Placement

- Do not place carts in the street.
- Place carts with opening facing the street or alley by 6 a.m. on your collection day.
- Leave at least two feet of space between carts, trees, fences, buildings, or other objects.
- Clear snow and ice from around the carts and do not place on snow piles.



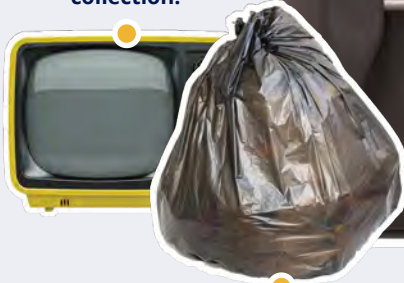
Recycling and garbage carts are the property of the City of Saint Paul. Do not paint or alter your carts.

USING YOUR CARTS

To find your hauler information or collection day, **visit stpaul.gov/collectionmap.**

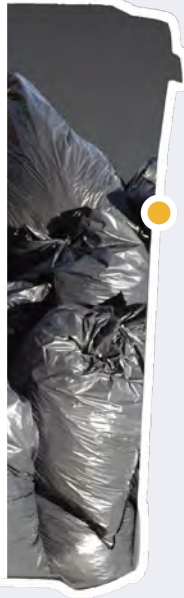
Make sure the cart lid is closed. If the lid is not closed, overflowing bags will be collected for an additional \$3 per bag.

Call your hauler for "bulky" item collection.



Put extra bags of garbage next to the cart (\$3 per bag + tax). The size must not exceed a 35-gallon bag.

All household garbage must be bagged and tied.



All recyclables must fit inside the cart with the lid closed.

Recyclables must be loose or in paper bags. No plastic bags.

Cardboard must be flattened and inside of the cart.



← 2FT →

Make sure the carts are two feet away from each other and other objects.

2023 COLLECTION CALENDAR

Residential recycling is collected weekly; garbage is collected weekly except for those that have selected every other week service.

- Every other week Garbage
- Holiday (No Collection)

- Tree Collection
- Delayed Collection Day

JANUARY

S	M	T	W	T	F	S
1	2	3	4	5	6	7
8	9	10	11	12	13	14
15	16	17	18	19	20	21
22	23	24	25	26	27	28
29	30	31				

FEBRUARY

S	M	T	W	T	F	S
			1	2	3	4
5	6	7	8	9	10	11
12	13	14	15	16	17	18
19	20	21	22	23	24	25
26	27	28				

MARCH

S	M	T	W	T	F	S
			1	2	3	4
5	6	7	8	9	10	11
12	13	14	15	16	17	18
19	20	21	22	23	24	25
26	27	28	29	30	31	

JULY

S	M	T	W	T	F	S
						1
2	3	4	5	6	7	8
9	10	11	12	13	14	15
16	17	18	19	20	21	22
23	24	25	26	27	28	29
30	31					

AUGUST

S	M	T	W	T	F	S
		1	2	3	4	5
6	7	8	9	10	11	12
13	14	15	16	17	18	19
20	21	22	23	24	25	26
27	28	29	30	31		

SEPTEMBER

S	M	T	W	T	F	S
					1	2
3	4	5	6	7	8	9
10	11	12	13	14	15	16
17	18	19	20	21	22	23
24	25	26	27	28	29	30

2023 HOLIDAY COLLECTION

Recycling and garbage pick-up will be delayed one day if your collection day falls on or after the following holidays:

Memorial Day

4th of July

Labor Day

Thanksgiving Day

Christmas Day

New Years Day (2024)

APRIL

S	M	T	W	T	F	S
						1
2	3	4	5	6	7	8
9	10	11	12	13	14	15
16	17	18	19	20	21	22
23	24	25	26	27	28	29
30						

MAY

S	M	T	W	T	F	S
	1	2	3	4	5	6
7	8	9	10	11	12	13
14	15	16	17	18	19	20
21	22	23	24	25	26	27
28	29	30	31			

JUNE

S	M	T	W	T	F	S
				1	2	3
4	5	6	7	8	9	10
11	12	13	14	15	16	17
18	19	20	21	22	23	24
25	26	27	28	29	30	

OCTOBER

S	M	T	W	T	F	S
1	2	3	4	5	6	7
8	9	10	11	12	13	14
15	16	17	18	19	20	21
22	23	24	25	26	27	28
29	30	31				

NOVEMBER

S	M	T	W	T	F	S
			1	2	3	4
5	6	7	8	9	10	11
12	13	14	15	16	17	18
19	20	21	22	23	24	25
26	27	28	29	30		

DECEMBER

S	M	T	W	T	F	S
					1	2
3	4	5	6	7	8	9
10	11	12	13	14	15	16
17	18	19	20	21	22	23
24	25	26	27	28	29	30
31						



COLLECTION INFORMATION

Find Your Collection Day

Residents living in 1–4-unit properties have recycling collected weekly in blue carts and garbage is collected weekly or every other week in gray carts. Find your collection day and your hauler's contact information at stpaul.gov/collectionmap.

Missed Collection

If your cart(s) were set out by 6 a.m., but not collected by 8 p.m. on your collection day, please contact the hauler by noon the following day to report a missed collection.

Education Tags

If your hauler was unable to collect your recycling or garbage, they may leave an education tag on your cart indicating the reason why it was not collected. If you receive a tag, please correct the problem by your next collection day.

BULKY ITEM COLLECTION

Two to three bulky items, depending on cart size, are included in the cost of garbage service annually. Bulky items are things that are too large to fit inside a garbage cart or are prohibited by law from being placed in your cart. Examples include mattresses, furniture, appliances, and electronics. To schedule a pick-up, contact your garbage hauler.

If your bulky item is in good, usable condition please consider donating it.

Additional bulky items can be collected by your garbage hauler for a fee. Price lists can be found at **stpaul.gov/bulky**.

To find other disposal options for bulky materials, visit **RamseyRecycles.com/AtoZ**.

Holiday Tree Collection

Each year, one live holiday tree can be collected per residential property unit between January 2-15 at no additional cost. Place the tree next to your garbage cart on your regular collection day. Artificial trees and live trees exceeding 6' and 20 pounds are not included but may qualify for a bulky item pick-up.

For more information, visit **stpaul.gov/holidaydisposal**.



Small Carts

2 bulky items included per year at no additional cost



Medium/ Large Carts

3 bulky items included per year at no additional cost



GARBAGE BILLING

Unpaid Bills

Residents receive a quarterly bill from their garbage hauler. If the garbage bill is unpaid, a 5% late charge will be applied at the end of each month during the billing period. At the end of the billing period, past due accounts are sent from the garbage haulers to the City for payment.

The City then collects the past due amount from residents through the Ramsey County property tax system. Any garbage payments from the past due service period must be paid to the City at stpaul.gov/assessments.

Change in Property Ownership

Both recycling and garbage carts should remain at the property. Contact your recycling or garbage hauler if you need carts.

Contact your garbage hauler to cancel or set up service.

There is no need to cancel or set up service for recycling.



BILLING PROCESS

BILLED

**JAN
5**

**APR
5**

**JUL
5**

**OCT
5**

DUE

**JAN
25**

**APR
25**

**JUL
25**

**OCT
25**



A 5% late charge will be applied at the end of each month to unpaid garbage bills.

ANNUAL FEES & GARBAGE RATES

2023 Annual Fees

The residential recycling and garbage programs each have an annual fee that is collected with your Ramsey County property taxes. These fees cover the cost of carts, program administration, clean-up programs, education, and outreach.

- Recycling fee is \$129.41 per unit
- Garbage fee is \$33.00 per unit

2023 Garbage Service Options and Prices

Your quarterly garbage service bill includes all county and state taxes (break down shown to the right). Yard waste service is available at an additional fee; residents can choose from weekly subscription service or non-subscription, call as needed, service.



Cart Size	# of Included Bulky Items	Base Rate	City and County Taxes	Total Quarterly Rate
EVERY OTHER WEEK COLLECTION				
Small	2	\$45.36	\$17.12	\$62.48
WEEKLY COLLECTION				
Small	2	\$53.94	\$20.37	\$74.31
Medium	3	\$75.69	\$28.57	\$104.26
Large	3	\$84.50	\$31.90	\$116.40

SERVICE HOLDS & WALK UP SERVICES

Service Holds

Temporary Service Holds: Contact your Garbage Hauler

During temporary absences, residents can request a hold of garbage service. Holds can be placed twice per calendar year for a minimum of four weeks up to a yearly total of 26 weeks.

Requests must be made to your garbage hauler at least two weeks prior to the start of the Temporary Service Hold. To learn more and to access forms, visit stpaul.gov/servicehold.

Unoccupied Dwelling Unit: Contact the City

Contact the City to register your property as unoccupied if you have a unit that will be vacant for six months or longer.

No service hold requests are needed for recycling service. To learn more and to access forms, visit stpaul.gov/servicehold.

Walk-Up Service

If you have physical limitations which prevent you from taking your cart to the curb or alley, you can request walk-up service from your garbage hauler at no additional cost. To learn more and access forms, visit stpaul.gov/walkup.

If you do not meet the criteria as a less able-bodied individual, you can request walk-up service for an additional fee:

- Less than 100 feet: \$25/month, plus tax
- More than 100 feet: \$50/month, plus tax

Walk-up service for recycling is also available at no extra charge. You can set up service by calling Eureka Recycling at 651-222-7678.





ORGANICS (YARD WASTE & FOOD SCRAPS)

Uneaten leftovers, forgotten produce, spoiled food, food scraps, and other organic material account for more than 20% of residential garbage. Learn how to reduce your food waste at stpaul.gov/foodwaste.

Composting your food scraps (organics) at home can be an easy and rewarding way to reduce waste and create nutrients to be added to your lawn and garden. Learn more at stpaul.gov/organics.

Yard Waste and Food Scraps

Yard Waste service is available at an additional fee. Residents can choose from weekly subscription service or non-subscription, call as needed, service. Contact your garbage hauler for more information.

Residents can bring yard waste and food scraps to Ramsey County yard waste sites for free. Photo ID required.

Find information at RamseyRecycles.com/YardWaste or RamseyRecycles.com/food-scraps.

There are eight locations in Saint Paul where residents can drop off food scraps for free.

Accepted materials include:

Food Scraps

- Fruits and Vegetables
- Meat, Seafood, and Bones
- Dairy Products
- Coffee Grounds

Soiled Paper

- Napkins
- Paper Towels

Products with BPI Label



	LEAVES & GRASS	TREES & SHRUBS	FOOD SCRAPS (ORGANICS)
24/7 Community Drop-off Sites			
Mac-Groveland (Off Grand Ave. near Macalester St.) <i>Sign up required. Visit macgrove.org.</i>			
Como Park (1149 Beulah Ln.)			
Highland Park (800 Snelling Ave. S.)			
Union Park (Corner of Carroll Ave. and N Griggs St.)			
Ramsey County Yard Waste Sites (hours apply)			
Summit Hill (870 Pleasant Ave.)			
Battle Creek (389 Winthrop St. S.)			
Midway (1943 Pierce Butler Rt.)			
Frank and Sims (1150 Sims Ave.)			



Resources for Creating Low-Waste Events

Find these planning resources and online forms at stpaul.gov/eventrecycling.

Waste Management Recycling Planning Guide

This guide provides tips and resources to assist with planning and implementing a low-waste event.

Waste Management Plans

Making a plan for handling trash, recyclables, and organics (if appropriate) is needed for any event that requires a City permit. Find the form online or contact City staff with questions.

Container Lending Program

Recycling and organics containers are available for event organizers to borrow at no cost.

Come Clean! Program

Help clean, beautify, and improve your neighborhood by reducing and cleaning up litter. Any individual or group can adopt a specific block(s), adopt a public trash container, or organize a one-time

litter clean up event with assistance from the City. To learn more, call 651-266-6199 or visit stpaul.gov/come-clean.

ReUse and Donations Guide & A to Z Recycling and Disposal Guide

Before disposing of an item, consider if it can be repaired, donated or sold. Use Ramsey County's online resources to learn what, how, and where to reuse, donate, recycle, and properly dispose of items.

Visit RamseyRecycles.com/AtoZ or call their 24/7 hotline at 651-633-EASY (3279). Interpretive services are available.

Fix-It Clinics

Attend a Fix-it Clinic to learn how to repair small household appliances, clothing, and more! Volunteers help residents troubleshoot problems and fix the items. Find details at RamseyRecycles.com/FixItClinics.

Citywide Drop-Off Events

Saint Paul partners with local district councils to organize annual citywide drop-off events. Residents can properly dispose of large items and recycle materials not collected in the residential collection program. Volunteers are always needed.

For information, visit stpaul.gov/drop-offs.

Electronics Recycling

Drop off unwanted electronics for free! Ramsey County's partnership with Repowered offers electronics recycling to residents.

For details on acceptable items, location, and hours, visit ramseycounty.us/Electronics or call 651-633-EASY (3276), answered 24/7.

Recycling and Cardboard Drop-Off Center

Saint Paul residents and small businesses can bring their recyclable materials to the free Recycling Drop-Off Center. Bring your over-sized, flattened cardboard here. See a list of accepted materials on page 4 and 5.

309 Como Avenue, Saint Paul
Monday - Friday 8 a.m. - 5 p.m.
Saturday 8 a.m. - noon

Holiday Lights Recycling

This holiday season, don't throw broken string lights in the garbage or recycling! Instead, drop them off at any Saint Paul Public Library after Nov. 27, 2023 - Jan. 19, 2024 and they will be recycled. You can also drop them off at the Ramsey County's free household hazardous waste collection sites year-round.
RamseyRecycles.com/HHW.





SAINT PAUL PUBLIC WORKS

CITY OF SAINT PAUL
DEPARTMENT OF PUBLIC WORKS
25 W 4TH ST - CITY HALL ANNEX 1500
SAINT PAUL, MN 55102



RECYCLING AND GARBAGE SERVICES 2023 RESIDENT GUIDE

KEEP THIS GUIDE YEAR-ROUND!

Questions? Information is available in 170 different languages. Call for interpreters. Recycling: 651-222-7678 / Garbage: 651-266-6101

¿Preguntas? Puede encontrar información disponible en Español en **stpaul.gov/publicworks**. Solicite el servicio de intérpretes. Reciclaje: 651-222-7678 / Basura: 651-266-6101

Puas muaj Lus noog? Muaj ntaub ntawv sau ua Lus Hmoob ntawm **stpaul.gov/publicworks**. Hu kom tau neeg txhais lus. Kev Sau Khoom Ua Dua Sv: 651-222-7678 / Khib Nyhiab: 651-266-6101

Su'aalo? Macluumaadka waxaa lagu heli karaa luqadaha Soomali ayadoo internetka laga galayo **stpaul.gov/publicworks**. Turjubaanno telefoonka lagugu xariirinayo. Qashinka dib loo isticmaalayo: 651-222-7678 / Qashinka: 651-266-6101