

# Harriet Island Regional Park Play Area

May 2023



**SAINT PAUL**  
MINNESOTA

**PARKS AND RECREATION DEPARTMENT**  
DESIGN AND CONSTRUCTION DIVISION

**HARRIET ISLAND PLAY AREA**  
**WSCO WEST SIDE VOICES FORUM**  
**MAY 9, 2023**



# TODAY'S AGENDA

---

1. WHERE WE'VE BEEN: **Community Engagement**
2. WHERE WE ARE: **Play Area Concept and Equipment**
3. WHERE WE'RE GOING: **Ongoing Project Process and Construction**





# Project Overview

## Play Area Renovation including:

- New Equipment
- Play Surfacing
- Furnishings
- Stormwater Management





# WHERE WE'VE BEEN: Community Engagement

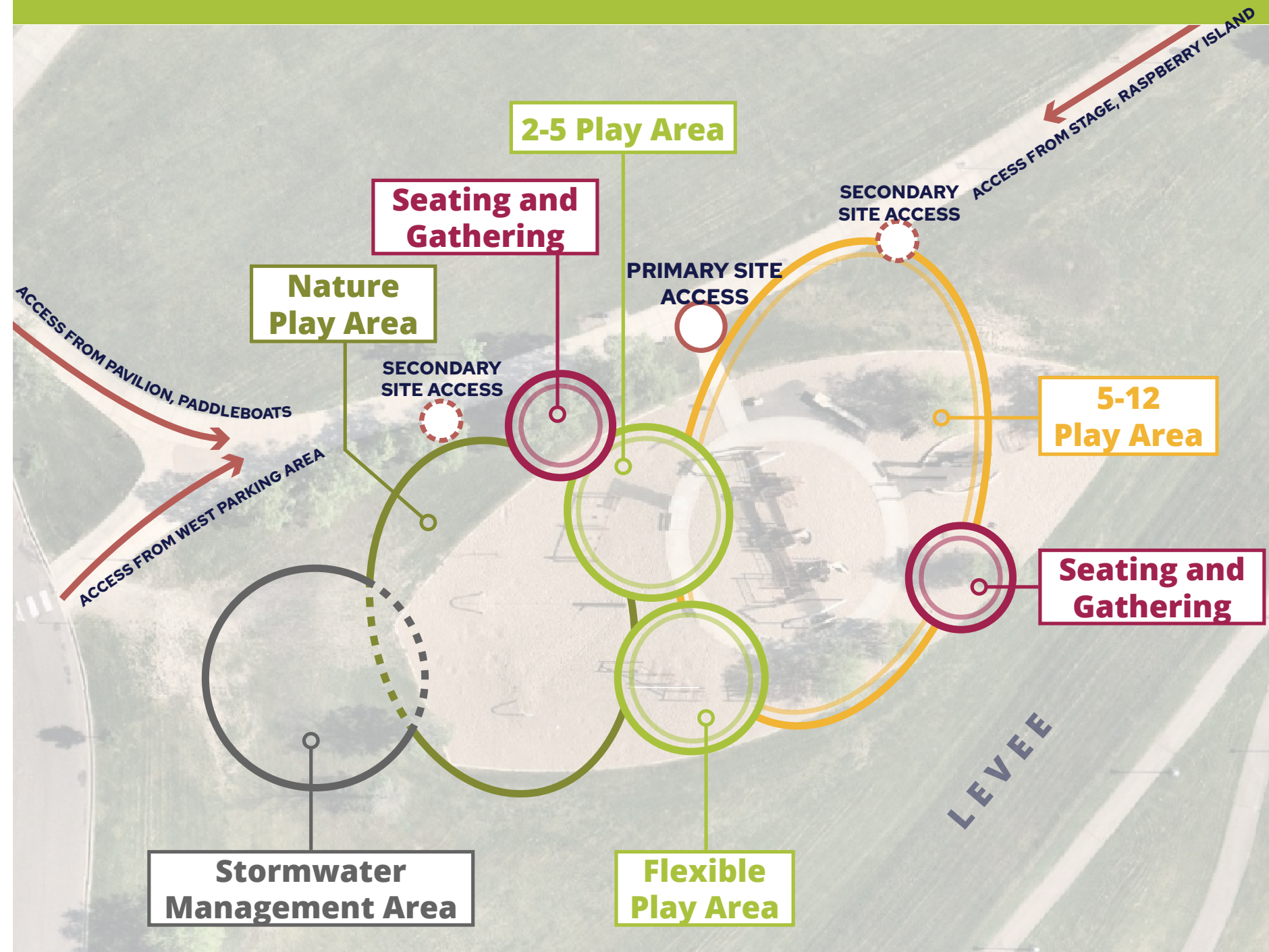
## ENGAGEMENT EVENTS

- Project Engagement Website (2021-2023)
- WSCO West Side Voices Forum - Virtual
- ALS Superhero Dash
- WSCO Annual Meeting (October 2022)
- Ward 2 Annual Meeting (January 2023)
- WSCO West Side Voices Forum (April & May 2023)

## OVERALL FEEDBACK THEMES

- More rest and bench locations
- Shade is important
- Reflect Indigenous culture and history, public art interest
- Water, connection to the River
- Accessible play features and spaces
- Combination of modern and traditional play equipment
- Zipline is a favorite feature!

## INITIAL SITE CONCEPT





# WHERE WE ARE: Play Area Concept and Equipment

## DESIGN OBJECTIVES

- 1 Create a balance that achieves **high value for play** between features and surfacing
- 2 Provide flexible experience to **accommodate a variety of users**
- 3 Design for **resiliency** and **variable site conditions**

## DESIGN CONSIDERATIONS

- Circulation and accessibility to features
  - » *Circuit play; areas for quiet play/sensory breaks; variety of play styles*
- Periphery spaces and edges
  - » *Open sight lines; landscape beds to focus on entry/exit points*
- User experience
  - » *Wider entry points for strollers, bicycles, etc.; Dynamic equipment forms, lower to ground for increased age/ability versatility*

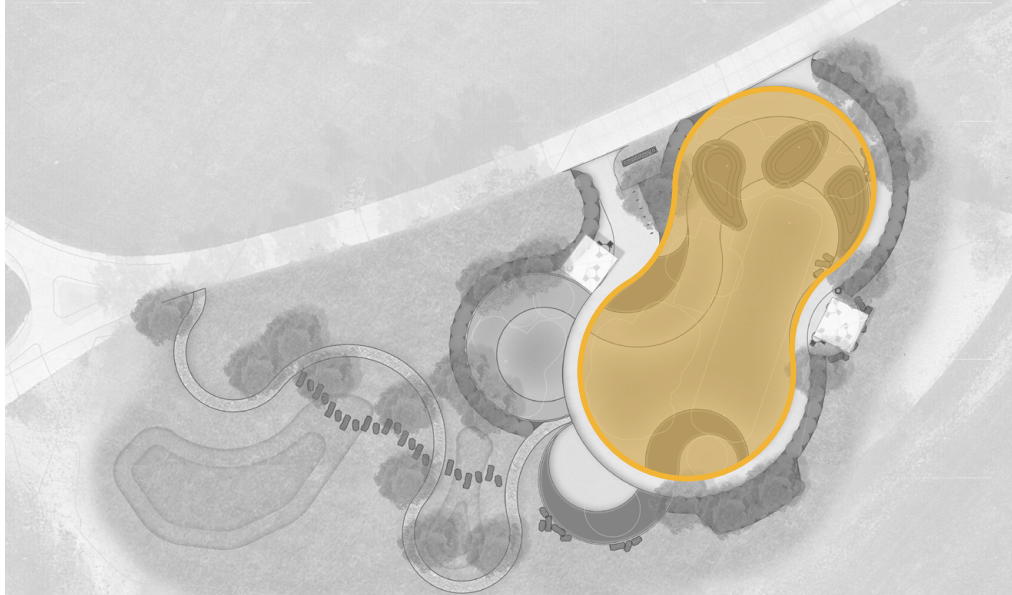
## PROPOSED SITE PLAN





# WHERE WE ARE: Play Area Concept and Equipment

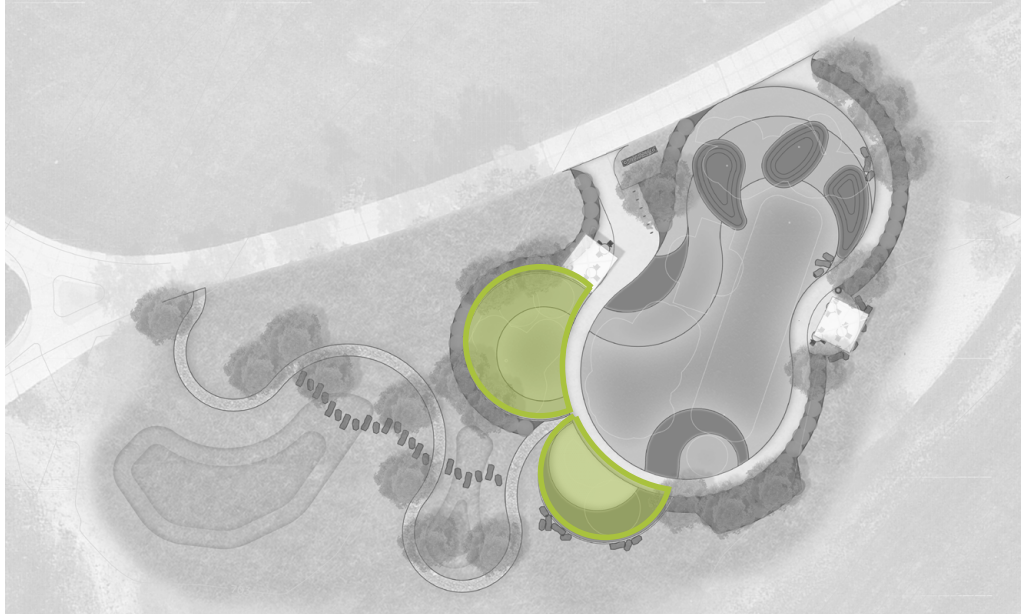
## 5-12 PLAY AREA





# WHERE WE ARE: Play Area Concept and Equipment

## 2-5 PLAY AREA AND SAND PLAY





# WHERE WE ARE: Play Area Concept and Equipment

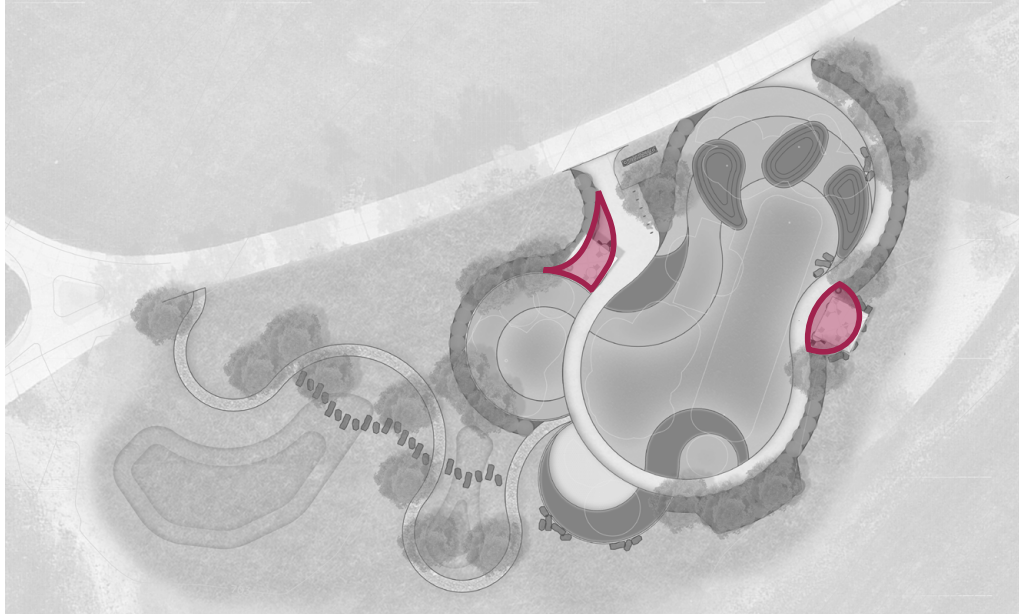
## INFORMAL PLAY AREA





# WHERE WE ARE: Play Area Concept and Equipment

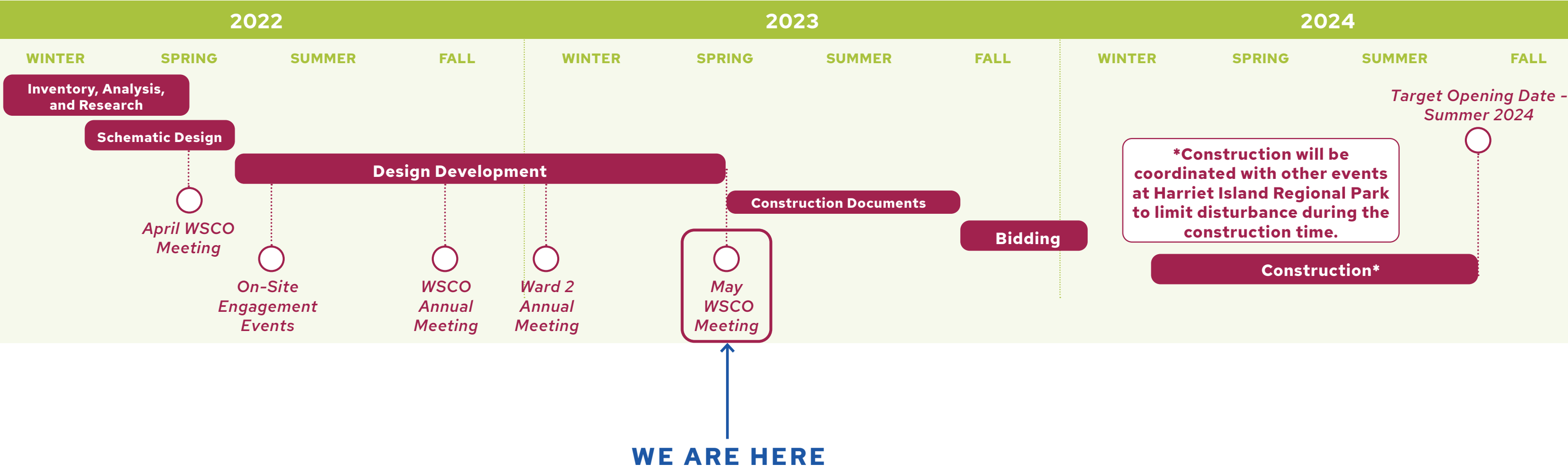
## SEATING AND GATHERING





# WHERE WE'RE GOING: Ongoing Project Process and Construction

## PROJECT TIMELINE



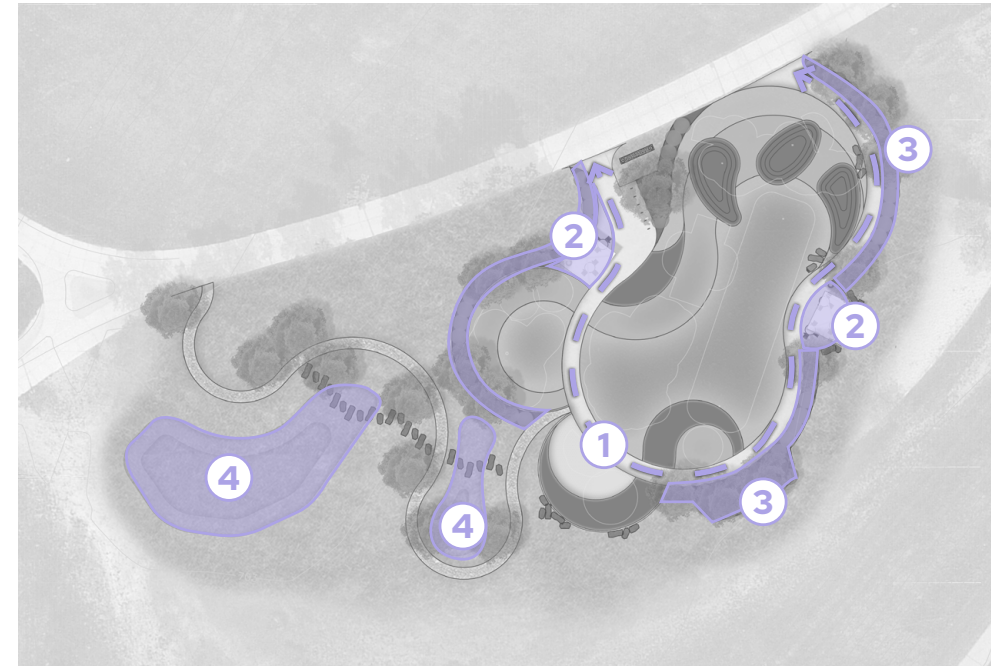


# WHERE WE'RE GOING: Ongoing Project Process and Construction

## NEXT STEPS

- Continue engagement through project website and community outreach
- Collaborate with community members and public artist to identify potential for **public art**
- Identify **project priorities** that align with available funding
- Develop Construction Documents
- Site Plan Review process through City
- Bidding/Construction 2023-2024
- Target Opening Date Summer 2024

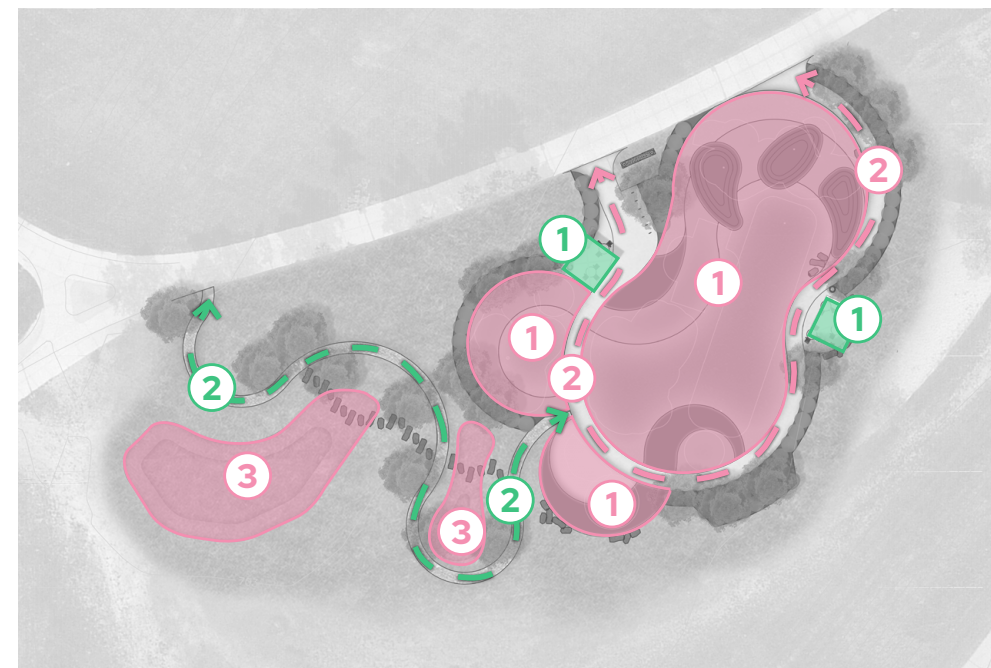
## PUBLIC ART



## OPPORTUNITY AREAS

- ① Pavement
- ② Seating (benches, seat wall, boulders)
- ③ Landscape Installation
- ④ Stormwater Areas

## PROJECT PRIORITIES



## P PRIMARY PRIORITIES

- ① Play Equipment and Surfacing
- ② Main Site Circulation
- ③ Stormwater Management

## S SECONDARY (ALTERNATE) PRIORITIES

- ① Shade Structures
- ② Secondary Path



## STAY ENGAGED!

Check out the project website  
for information and updates:

<https://www.stpaul.gov/departments/parks-and-recreation/design-construction/current-projects/harriet-island-regional-park>

Share your feedback  
with the design team:

<https://engagestpaul.org/harriet-island>



**SAINT PAUL**  
MINNESOTA

**PARKS AND RECREATION DEPARTMENT**  
DESIGN AND CONSTRUCTION DIVISION

**HARRIET ISLAND PLAY AREA**  
**WSCO WEST SIDE VOICES FORUM**  
**MAY 9, 2023**