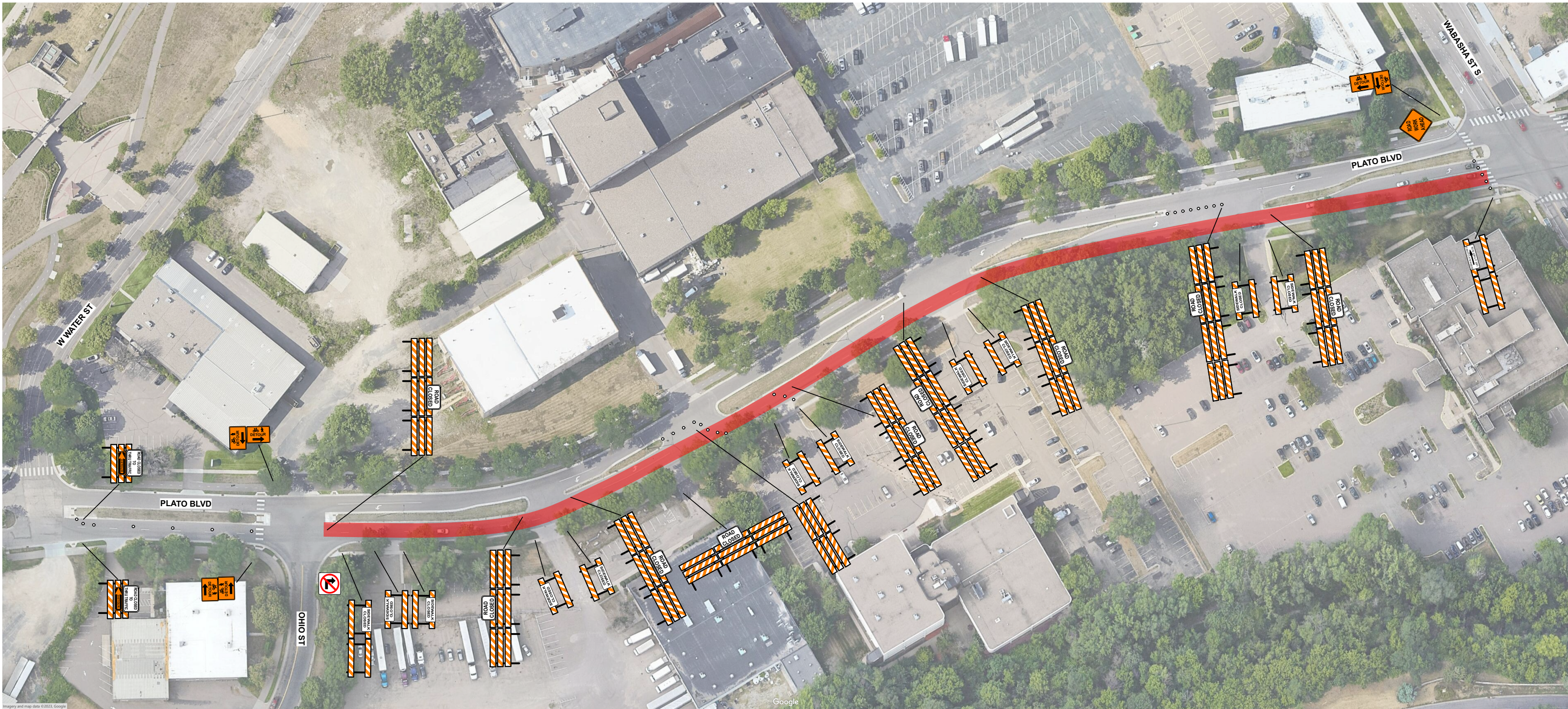


**NOTE:
USE DRUMS TO CHANNELIZE
BUSINESS ENTRANCES AS NEEDED**



1	6/8/2023	NICK SCHUMACHER
NO	DATE	DWN CKD REVISIONS



Disclaimer - This is a proposed traffic control device layout. It has not been prepared by a Professional Engineer and must be approved and accepted by the Road Authority. Safety Signs LLC does not assume any legal liability.

MINGER CONSTRUCTION
WATER ST SANITARY - PHASE 1B



PLATO BLVD & WABASHA ST - ST. PAUL
SHEET NO. 2 OF 2 SHEETS