

# 2024 Adopted Budget: Public Health

**Department Mission:** Protect and improve the health of people and the environment in Ramsey County

Learn More: <https://www.ramseycounty.us/your-government/departments/health-and-wellness/public-health>

## Department Facts

- **Total General Fund Budget:** -
- **Total Special Fund Budget:** \$1,264,676
- **Total FTEs:** 9.94

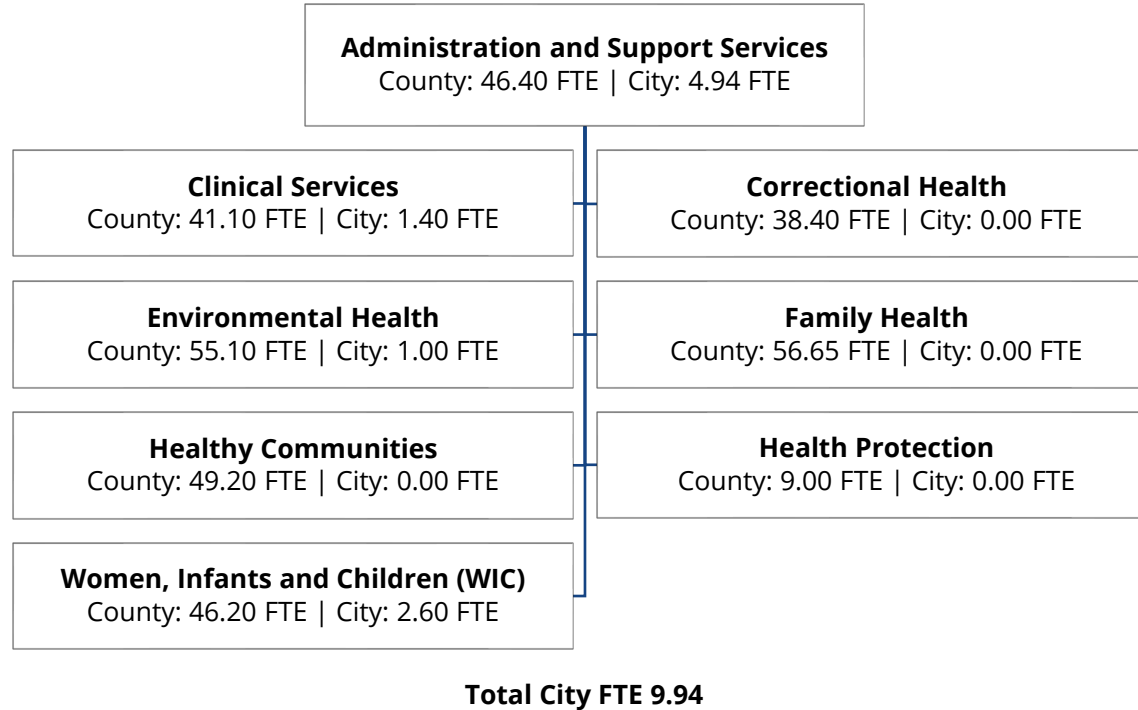
## Department Goals

- Provide leadership as a prevention strategist - working to promote health and racial equity.
- Ensure an adequate public health infrastructure.
- Promote healthy communities and healthy behaviors.
- Prevent the spread of infectious diseases.
- Protect against environmental hazards.
- Prepare for and respond to disasters.
- Ensure the quality and accessibility of health services.

## Recent Accomplishments

- 30,217 birth and death certificates provided.
- 23,877 low-income mothers, infants, and children were provided with nutrition counseling and monthly vouchers for nutritious foods.
- 28,837 clinical service visits and immunizations provided.
- 14,795 laboratory tests performed.

# Public Health Organizational Chart



## Department Description

Saint Paul – Ramsey County is one of the largest local public health departments in Minnesota, serving Saint Paul and all other cities in Ramsey County. The department traces its origins to the appointment of the first public health officer by the city of Saint Paul in 1854. Saint Paul and Ramsey County's previously separate public health departments merged in 1997 through a joint powers agreement. This merge created Saint Paul-Ramsey County Public Health. The administration of this function now resides with the County. As resignations or retirements of City staff occur, the positions are filled by the County, and the City budget shows a decline in FTEs and dollars associated with paying their salary and benefits. All costs are reimbursed by Ramsey County and the County is responsible for the portion of the tax levy that covers these expenses. The City of Saint Paul does not levy for public health services.

**2024 Adopted Budget  
HEALTH**

**Fiscal Summary**

	<b>FY 2021 Actuals</b>	<b>FY 2022 Actuals</b>	<b>FY 2023 Adopted Budget</b>	<b>FY 2024 Adopted Budget</b>	<b>Change From Prior Year</b>	<b>FY 2023 Adopted Budget FTE</b>	<b>FY 2024 Adopted Budget FTE</b>
<b>Spending</b>							
250: PUBLIC HEALTH	1,612,507	1,281,813	1,198,186	1,264,676	66,490	9.94	9.94
<b>Total</b>	<b>1,612,507</b>	<b>1,281,813</b>	<b>1,198,186</b>	<b>1,264,676</b>	<b>66,490</b>	<b>9.94</b>	<b>9.94</b>
<b>Financing</b>							
250: PUBLIC HEALTH	1,736,581	1,290,300	1,198,186	1,264,676	66,490		
<b>Total</b>	<b>1,736,581</b>	<b>1,290,300</b>	<b>1,198,186</b>	<b>1,264,676</b>	<b>66,490</b>		

**Budget Changes Summary**

In 1997, the City's Public Health department merged with Ramsey County's through a joint powers agreement. The administration of public health services now resides with the County. As resignations or retirements of City staff occur, the positions are filled by County personnel. As City employees resign or retire, the City budget shows a decline in FTEs and dollars associated with paying their salary and benefits. All salary and benefit costs are reimbursed by Ramsey County and the County is responsible for the portion of the property tax levy that covers these expenses. The 2024 budget increased by \$66,490 compared to the 2023 adopted budget, which reflects current service level adjustments for salaries and benefits.

**250: Public Health****Public Health****Current Service Level Adjustments**

	<b>Change from 2023 Adopted</b>		
	<b>Spending</b>	<b>Financing</b>	<b>FTE</b>
Employee Salary and Benefits Growth	66,490	66,490	-
<b>Subtotal:</b>	<b>66,490</b>	<b>66,490</b>	<b>-</b>

**Fund 250 Budget Changes Total****66,490      66,490      -**

# **Public Health Spending Reports**

**CITY OF SAINT PAUL**  
**Spending Plan by Department**

**Department: HEALTH**  
**Fund: PUBLIC HEALTH**

**Budget Year: 2024**

	FY 2021 Actuals	FY 2022 Actuals	FY 2023 Adopted Budget	FY 2024 Adopted Budget	Change From Prior Year
<b>Spending by Major Account</b>					
EMPLOYEE EXPENSE	1,610,849	1,281,813	1,186,715	1,253,205	66,490
SERVICES	1,483	-	11,471	11,471	-
MATERIALS AND SUPPLIES	175	-	-	-	-
<b>Total Spending by Major Account</b>	<b>1,612,507</b>	<b>1,281,813</b>	<b>1,198,186</b>	<b>1,264,676</b>	<b>66,490</b>
<b>Spending by Accounting Unit</b>					
25040200 - PUBLIC HEALTH SUPPORT SERVICES	504,647	458,500	478,601	505,569	26,968
25040201 - PUBLIC HEALTH COMMUNICATIONS	134,506	136,553	112,643	122,380	9,737
25040202 - PUBLIC HEALTH MAINTENANCE	87,070	114,899	85,390	87,465	2,075
25040205 - HEALTH LABORATORY	96,199	95,875	92,746	100,182	7,436
25040210 - HEALTH LAB SPECIAL	-	-	1,283	1,245	(38)
25040215 - BIRTH AND DEATH RECORDS	-	-	146	94	(52)
25040220 - COMMUNICABLE DISEASE CONTROL	284,262	222,703	165,824	180,854	15,030
25040225 - FAMILIES IN CRISIS	-	-	875	875	-
25040230 - FAMILY PLANNING	-	-	465	416	(49)
25040235 - WIC SUPPLEMENTAL FOOD	354,629	253,284	255,572	261,008	5,436
25040240 - LEAD BASED PAINT HAZZARD	151,193	-	4,641	4,588	(53)
<b>Total Spending by Accounting Unit</b>	<b>1,612,507</b>	<b>1,281,813</b>	<b>1,198,186</b>	<b>1,264,676</b>	<b>66,490</b>

# **Public Health Financing Reports**

**CITY OF SAINT PAUL**  
**Financing Plan by Department**

**Department: HEALTH**  
**Fund: PUBLIC HEALTH**

**Budget Year: 2024**

	FY 2021 Actuals	FY 2022 Actuals	FY 2023 Adopted Budget	FY 2024 Adopted Budget	Change From Prior Year
<b>Financing by Major Account</b>					
CHARGES FOR SERVICES	1,736,581	1,290,300	1,198,186	1,264,676	66,490
<b>Total Financing by Major Account</b>	<b>1,736,581</b>	<b>1,290,300</b>	<b>1,198,186</b>	<b>1,264,676</b>	<b>66,490</b>
<b>Financing by Accounting Unit</b>					
25040200 - PUBLIC HEALTH SUPPORT SERVICES	562,665	468,035	478,601	505,569	26,968
25040201 - PUBLIC HEALTH COMMUNICATIONS	136,623	138,130	112,643	122,380	9,737
25040202 - PUBLIC HEALTH MAINTENANCE	84,052	90,020	85,390	87,465	2,075
25040205 - HEALTH LABORATORY	104,396	96,823	92,746	100,182	7,436
25040210 - HEALTH LAB SPECIAL	74	-	1,283	1,245	(38)
25040215 - BIRTH AND DEATH RECORDS	346	-	146	94	(52)
25040220 - COMMUNICABLE DISEASE CONTROL	313,222	228,834	165,824	180,854	15,030
25040225 - FAMILIES IN CRISIS	-	-	875	875	-
25040230 - FAMILY PLANNING	88	-	465	416	(49)
25040235 - WIC SUPPLEMENTAL FOOD	375,069	243,270	255,572	261,008	5,436
25040240 - LEAD BASED PAINT HAZZARD	160,046	25,188	4,641	4,588	(53)
<b>Total Financing by Accounting Unit</b>	<b>1,736,581</b>	<b>1,290,300</b>	<b>1,198,186</b>	<b>1,264,676</b>	<b>66,490</b>