

New Park at the Heights

Hillcrest Master Plan by LHB

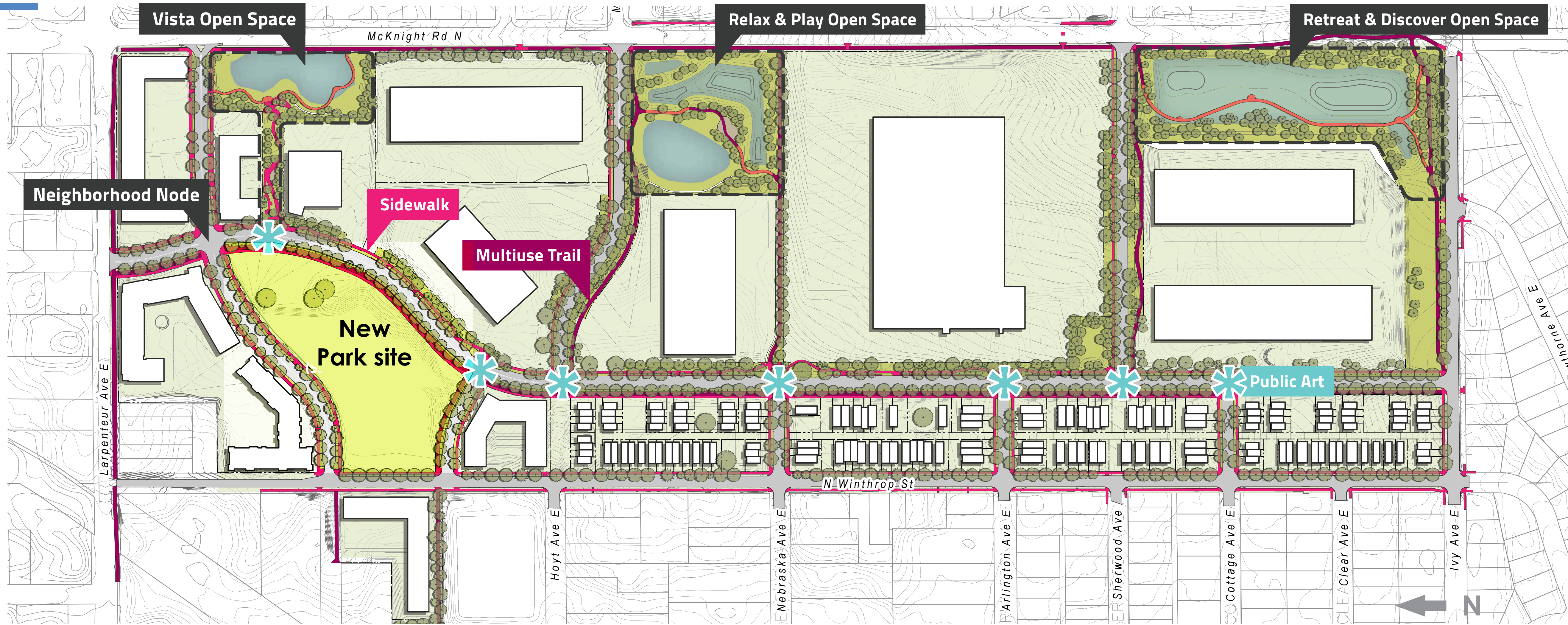
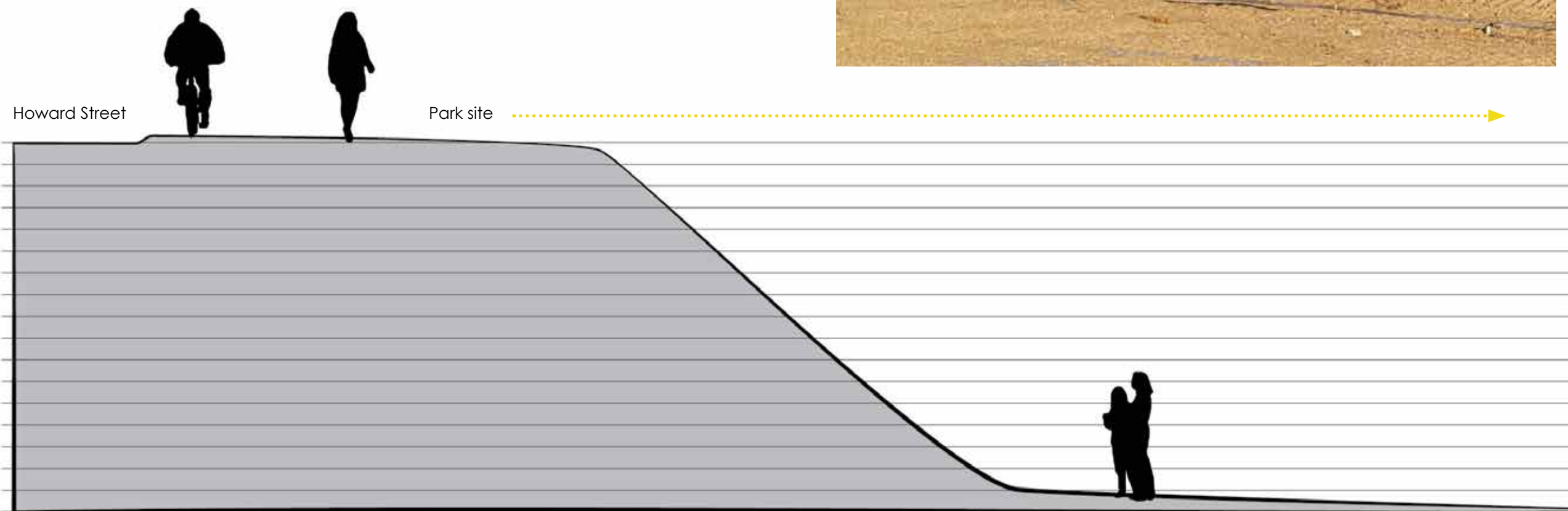
The Heights development at the former Hillcrest Golf Course will combine housing and light industrial uses in a new mixed use development.

The new 5 acre park is being planned within the development to serve the community within and surrounding the Heights.

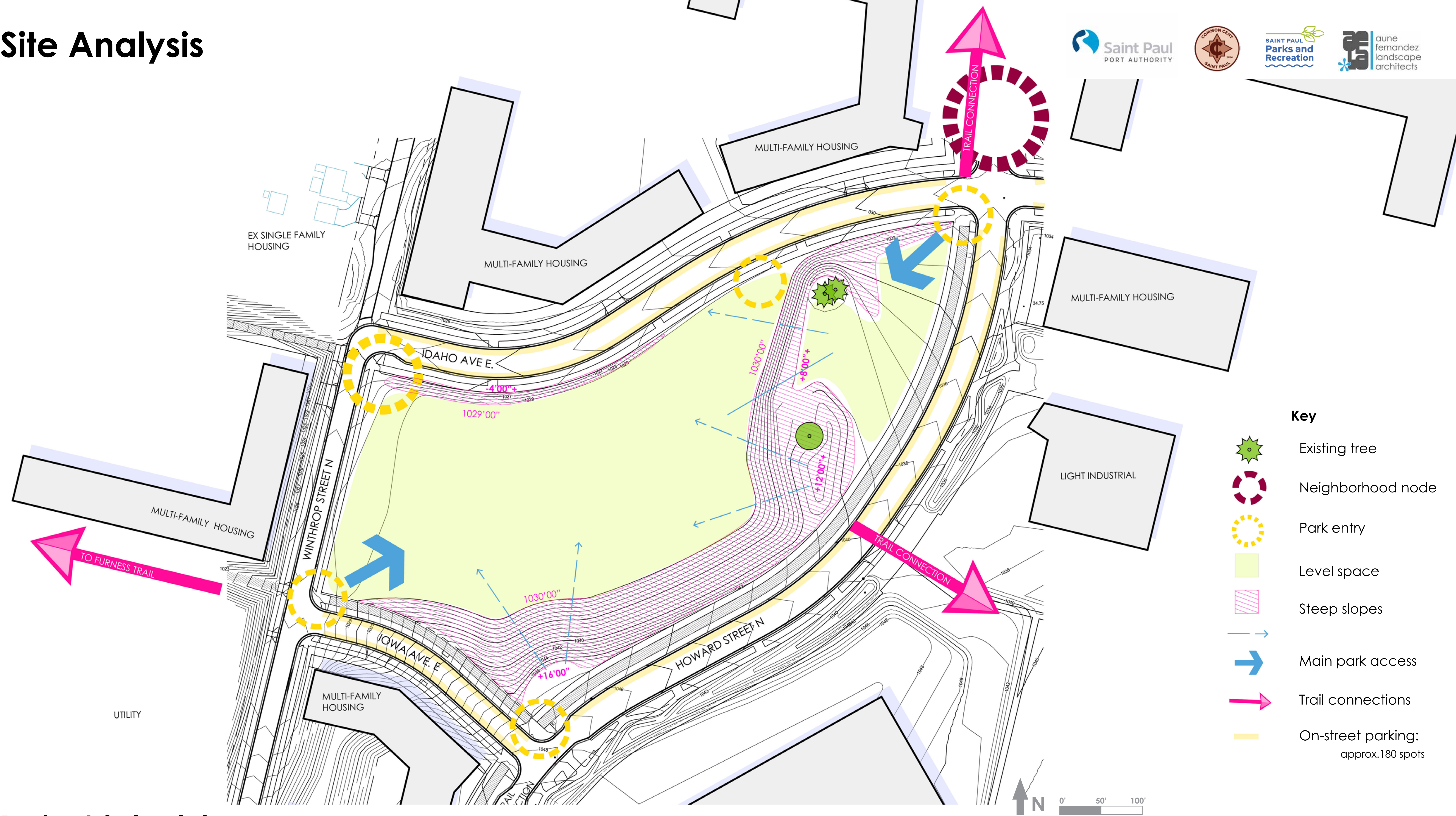
The goal of the park design is to uniquely serve the needs of the neighborhood with a welcoming park space for the surrounding neighborhood.

Site remediation created an opportunity to define the character of the park space, as well as program. As seen in these recent photos, the park site is a clean slate, with three trees remaining.

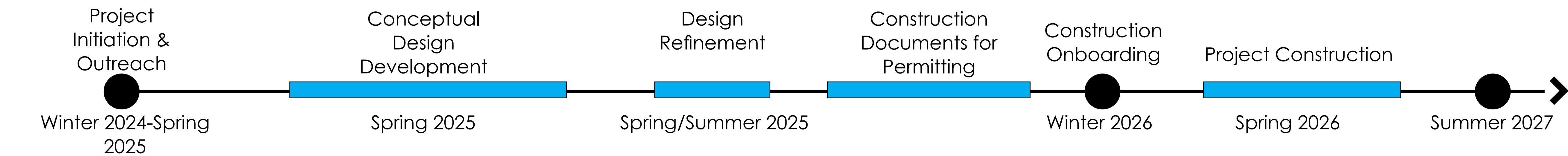
A steep slope wraps the south and east sides of the site. An opportunity and constraint for the park design.



Site Analysis



Project Schedule



What We Heard So Far

Creating a new park provides the opportunity to tailor the program and amenities to community desires. Saint Paul Parks and Recreation conducted a survey of park neighbors over the summer of 2024 to determine desired park program.

Park priorities

2024 community survey responses:

- PUBLIC ART
- RECREATIONAL
- MULTIGENERATIONAL
- ACCESSIBLE
- ECOLOGICAL
- PLAYFUL
- FAMILY FRIENDLY
- COMMUNITY ORIENTED
- DOG FRIENDLY

Place a sticker on the features you want to see at the park. Including the list below:

community garden



sepak takraw & tuj lub



gatherings



restrooms



park shelter



picnic area



volleyball



sledding



open space



nature play



pickleball



pedestrian & bike trails



- Adult fitness circuit
- Basketball
- Food truck parking
- Educational / Interpretive elements
- Fenced dog park
- Gathering spaces for small groups (4-12)
- Gathering spaces for large groups (20-60)
- Skate park
- Public art

Youth Engagement

Hayden Heights Rec Center

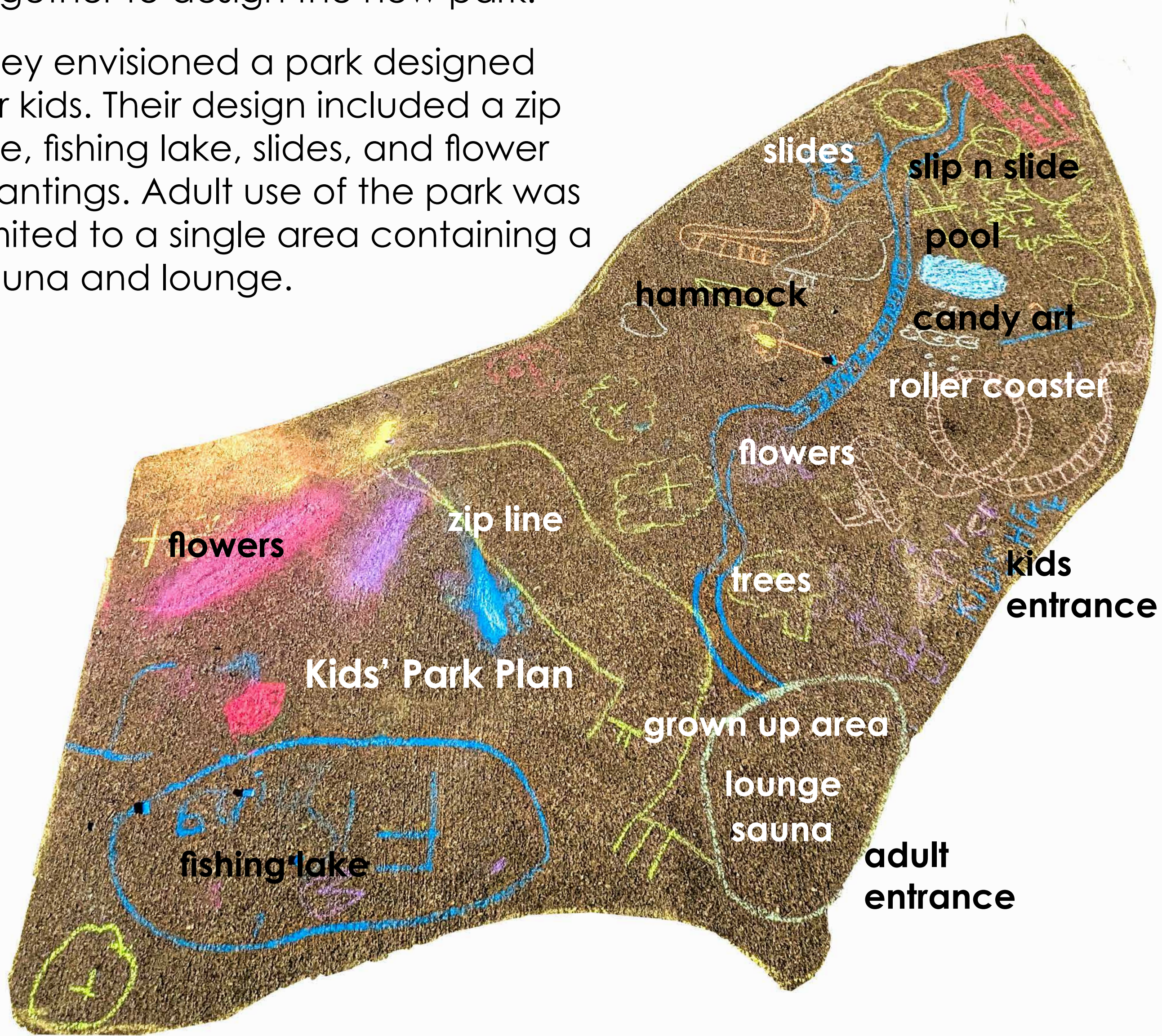
We hosted two workshops with Pao Her and Peter Morales and kids at Hayden Heights Rec Center. At the first workshop, kids created Spirit of the Park drawings and sculptures.

At the second workshop, kids worked together to design the new park.

They envisioned a park designed for kids. Their design included a zip line, fishing lake, slides, and flower plantings. Adult use of the park was limited to a single area containing a sauna and lounge.



Inspiration-surfaces and textures



Johnson High School

We visited three Ninth grade engineering classes at Johnson High School to do a park design exercise. We asked them to design their own park after thinking about what they and their families do when they visit a park.

Students shared their favorite park activities and proposed park designs that included stormwater design.

High School Students' Park Priorities:

RESTROOMS

PICNIC SHELTER

BASKETBALL

OPEN SPACE

VOLLEYBALL

PLAYGROUND

COMMUNITY GARDEN

FOOD TRUCK PARKING

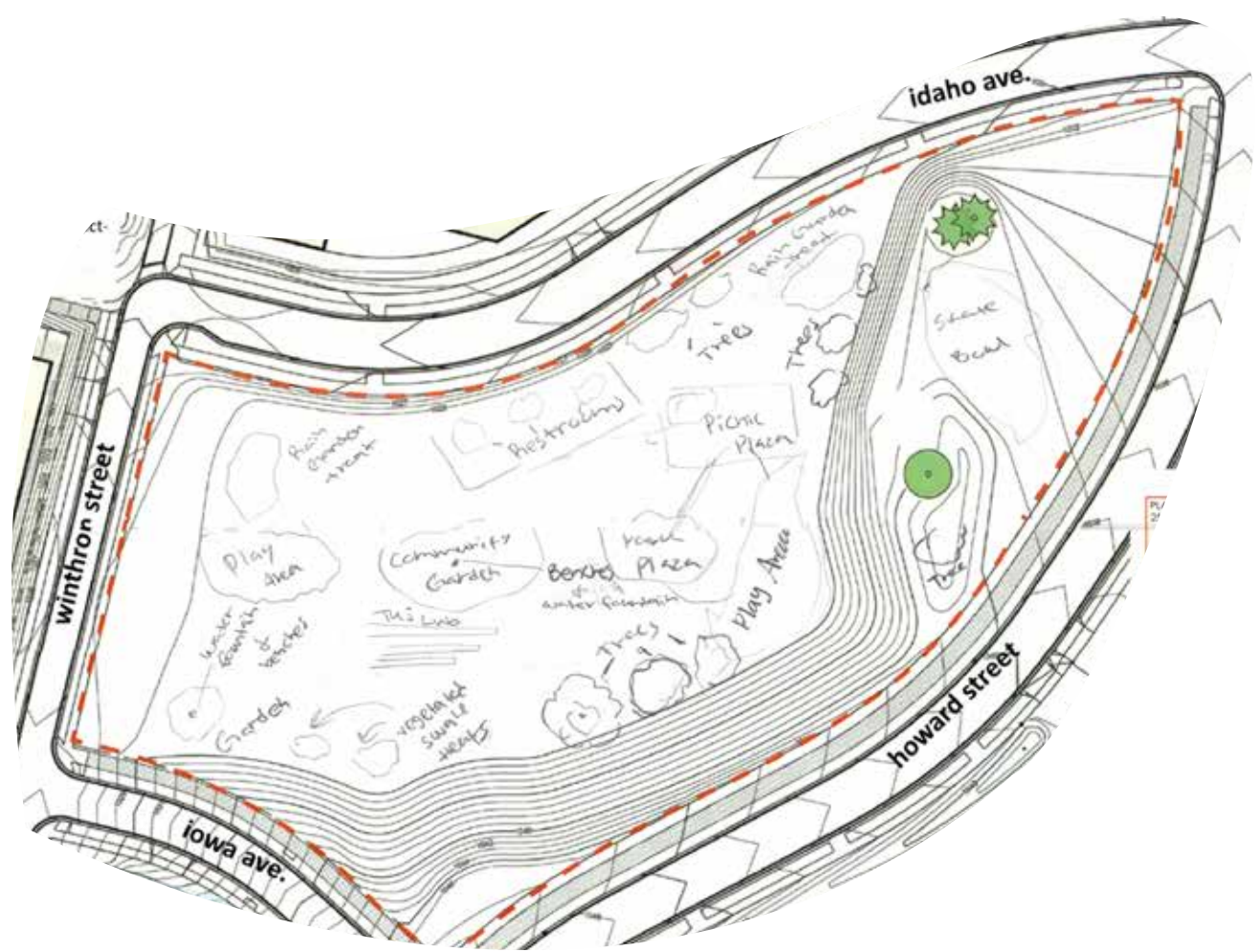
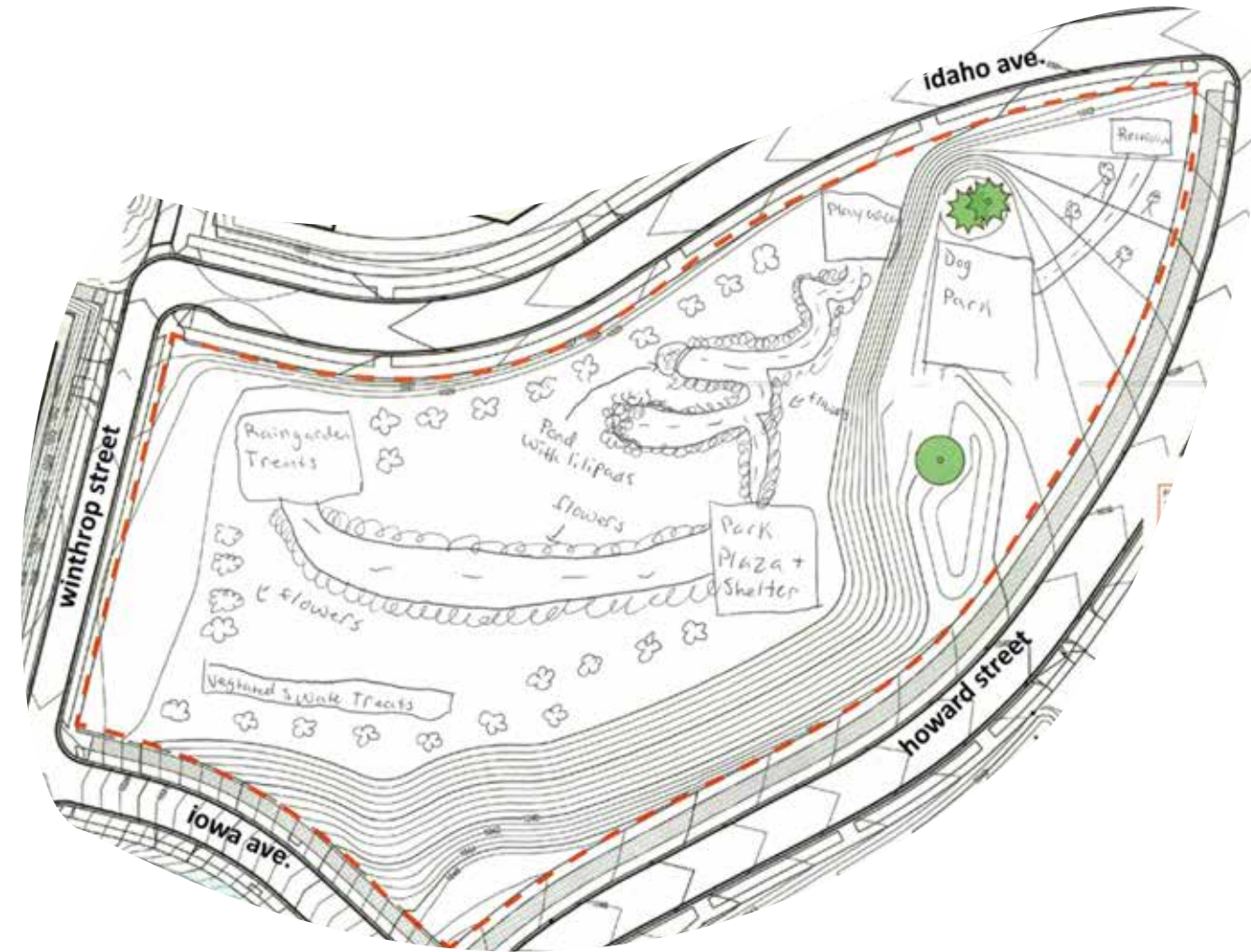
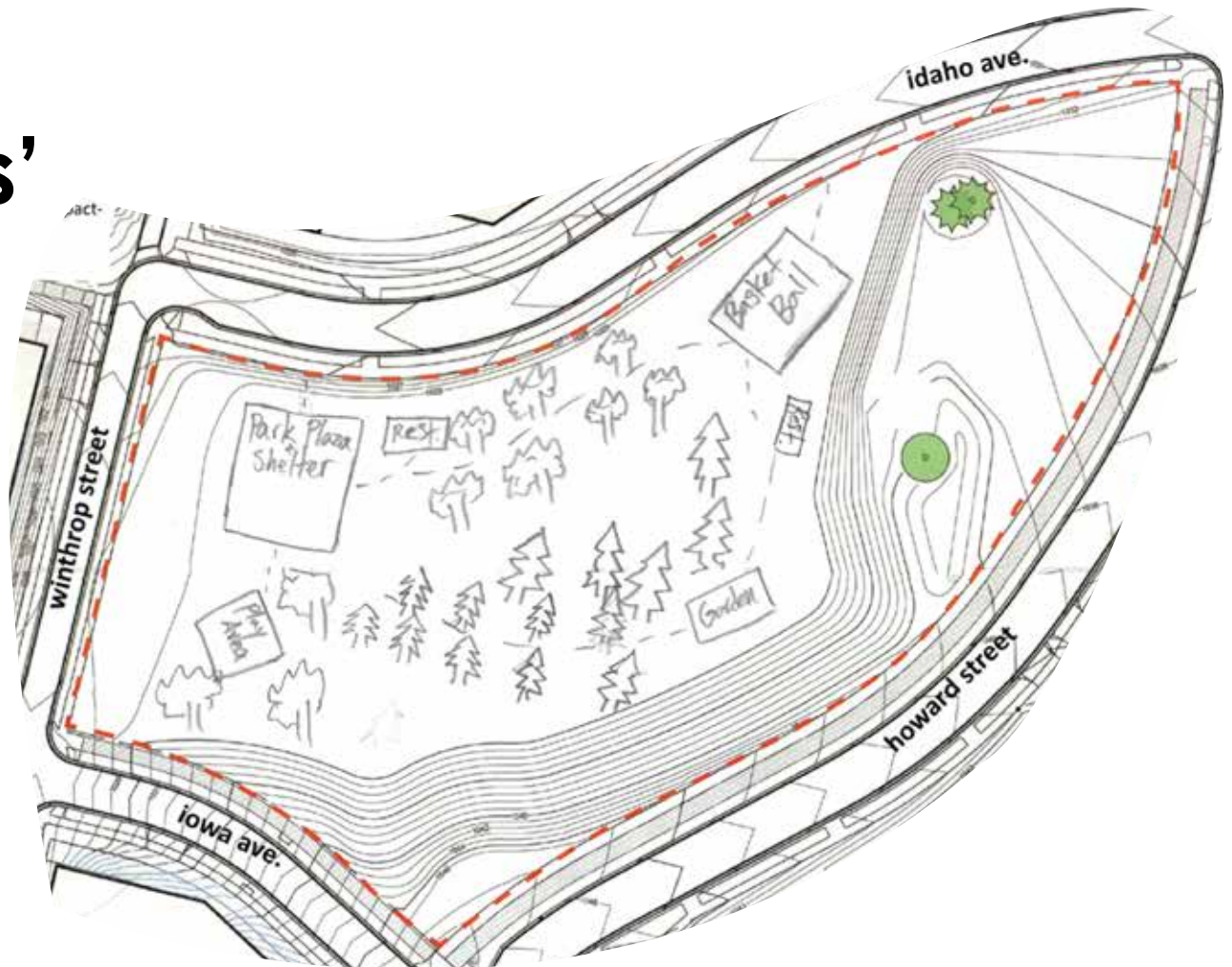
SOCCER

GARDENS/ FLOWERS

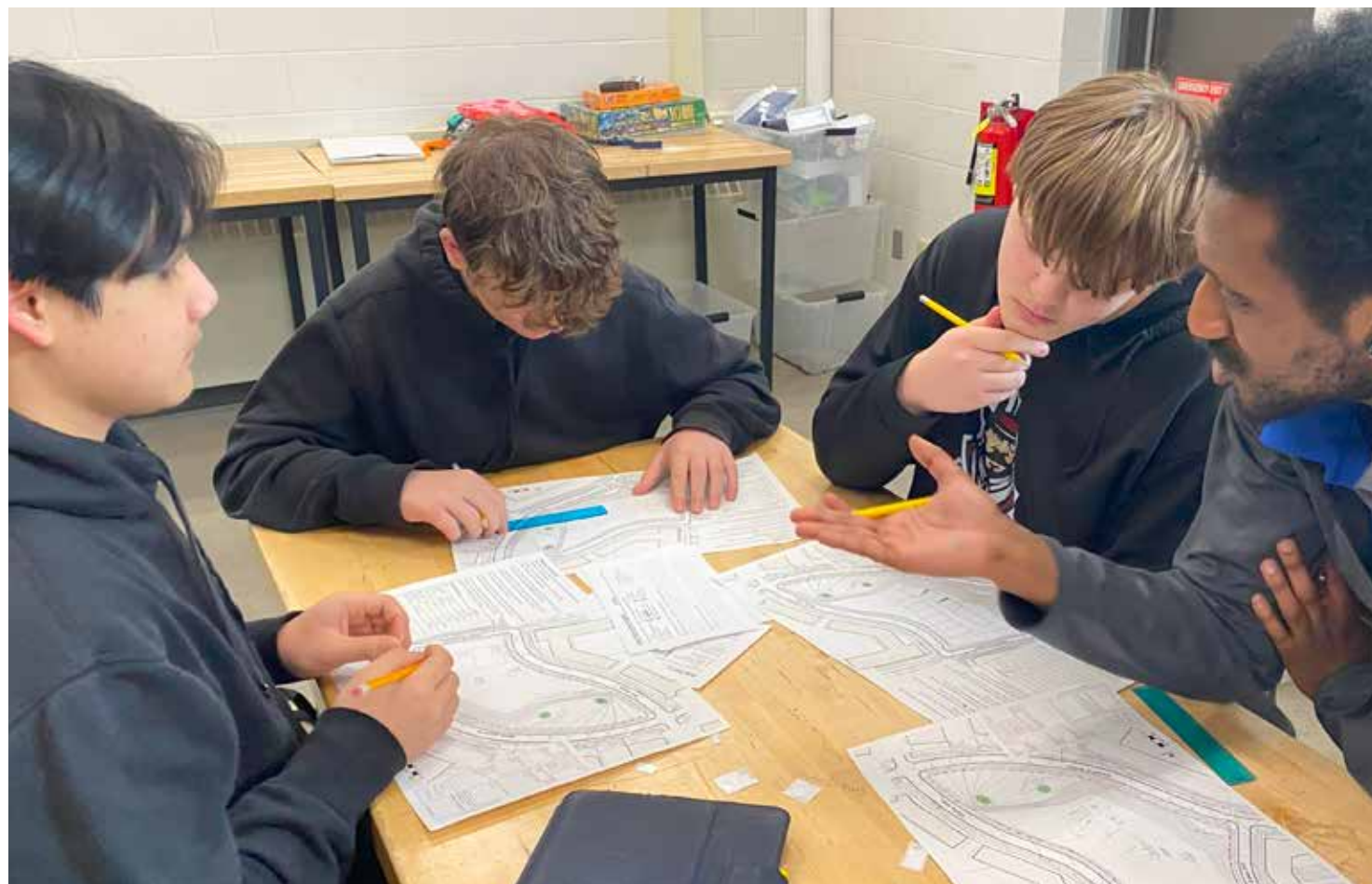
TREES

SKATE BOWL

NATURE



Student park design examples



Johnson High School Student park activity

Public Art

Saint Paul based artists Peter Morales and Pao Houa Her are collaborating with the design team for the new park, with the goal of integrating their perspectives on art and design throughout the park. They have been working with neighborhood youth in art based activities and will draw on these interactions to inspire public art concepts for the park.

Hillcrest Masterplan Art Principles

- **ART SIGNIFIES, UNIFIES, AND CONNECTS** public spaces--adding to overall site character
- **ART IS PRESENT THROUGHOUT**, not one location
- Artful places **ENABLE COMMUNITY GATHERING**
- Artful places are inviting to diverse users
- Landform art and plantings **CONNECT PEOPLE TO NATURE**
- **COMMUNITY IS ENGAGED AND INVOLVED** in aesthetic decision-making leading to pride in place, and ongoing support and care of art

eggsail saga by Peter Morales



actual fractals by Pao Houa Her



community priorities from members of the Public Art Workgroup, facilitated by the St Paul Port Authority and Forecast Public Art.

MULTIGENERATIONAL - ECOLOGICALLY MINDED - PLAYFUL - CURIOUS - COMMUNITY ORIENTED - CULTURAL - COLORFUL - NARRATIVE DRIVEN - ACCESSIBLE -

Concept Plan: Community Gathering



LEGEND

- 1 Prairie Planted Landforms
- 2 Conifer overstory
- 3 Adult Fitness Circuit
- 4 Long vista
- 5 Small Group picnic area
- 6 Internal trail loop
- 7 Shelter/ Restrooms
Large group plaza w/
grills (40 -60 people)
- 8 Sledding hill/ Overlook
- 9 Destination playground
- 10 Community Garden
- 11 Small Gathering/
Performance space
(20-30 people)
- * Architectural habitat
structures
 - Bird houses
 - Bat houses
 - Raptor platform
- Public Art installation



Concept Plan: Recreation



LEGEND

- 1 Shelter & restroom
- 2 Picnic Plaza with grills (40-60 people)
- 3 Fenced Dog Park
- 4 Playground
- 5 Turf Volleyball courts
- 6 Full Basketball Court
- 7 Open field
- 8 Skate Bowl
- 9 Playground
- 10 Small Group Picnic area with grills (20-30 people)
- 11 Food Truck Plaza
- 12 Central Walk / Evergreen allée
- 13 Internal Walking Paths
- 14 Landform berms
- 15 Sledding hill
- 16 Overlook

Public Art at Trail Intersections

