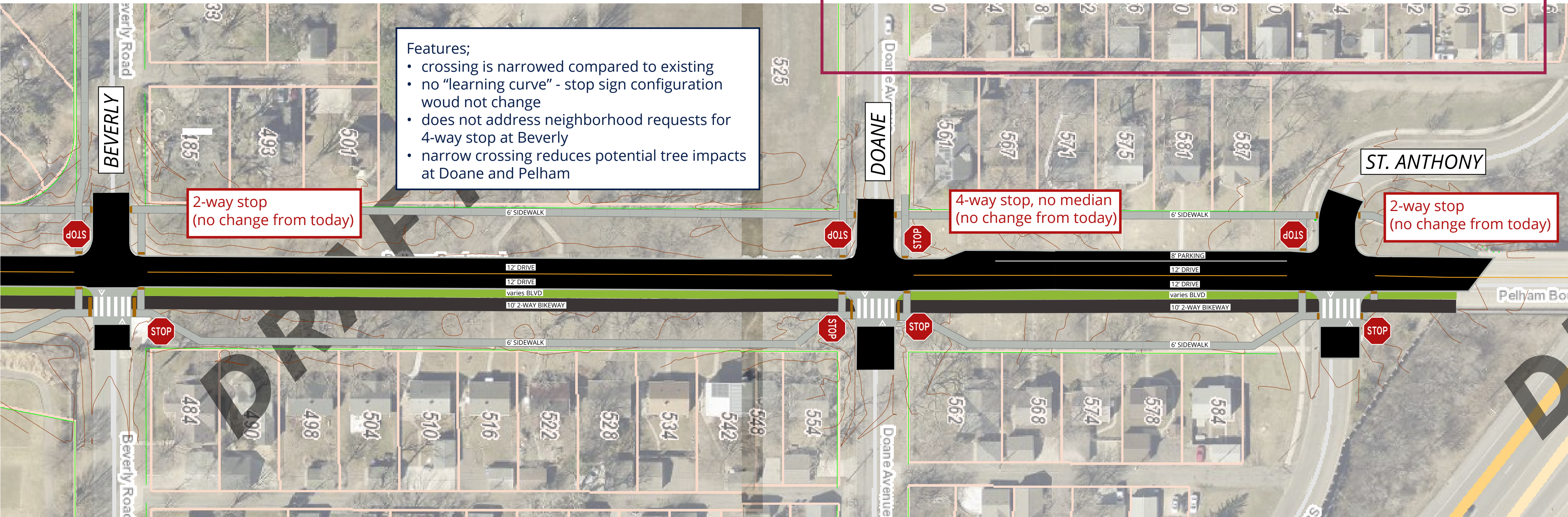


# Beverly to St. Anthony Intersections and Stop Signs

[stpaul.gov/pelham](http://stpaul.gov/pelham)  
Project Contacts: Jary Lee, [jary.lee@ci.stpaul.mn.us](mailto:jary.lee@ci.stpaul.mn.us)  
Jimmy Shoemaker, [jimmy.shoemaker@ci.stpaul.mn.us](mailto:jimmy.shoemaker@ci.stpaul.mn.us)

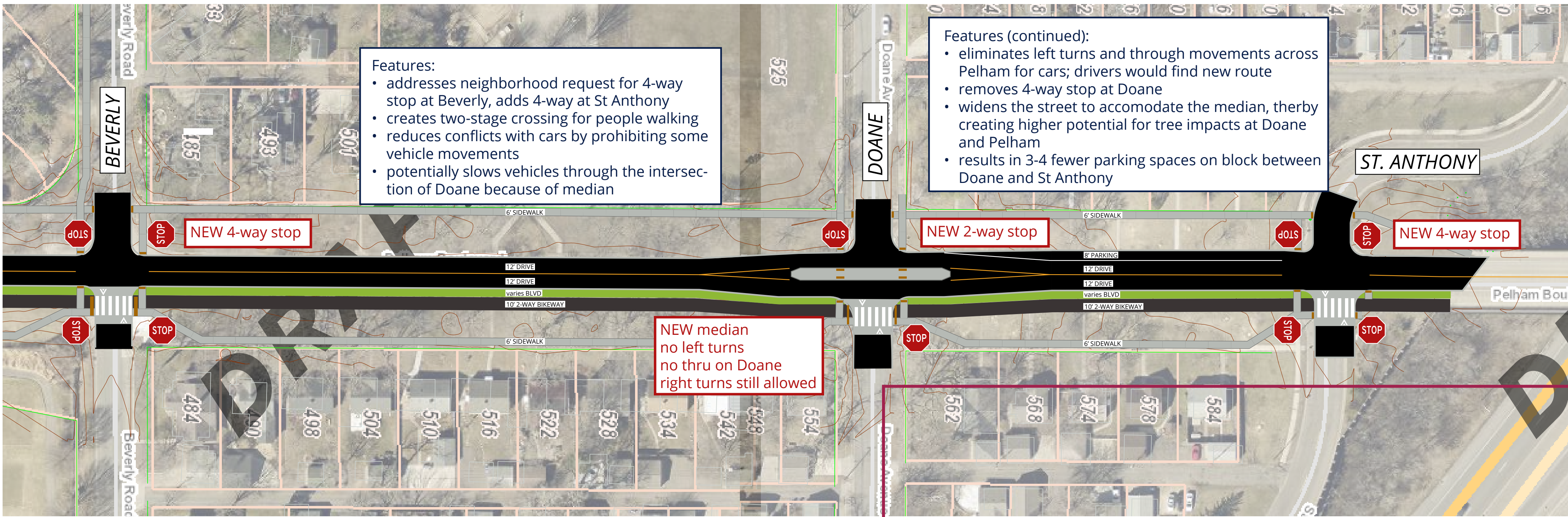


## Alternative 1: no change from existing



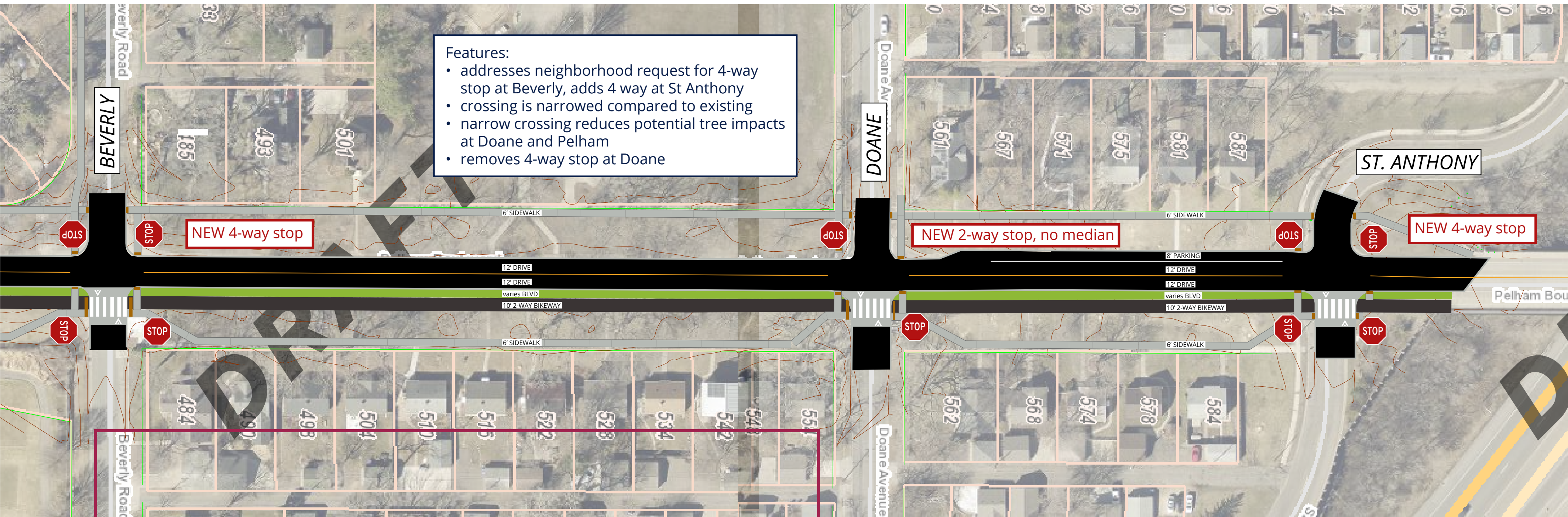
*Vote here for Alternative 1*

## Alternative 2: 4-way stop at Beverly, 4-way stop at St. Anthony, 2-way stop at Doane, median at Doane (with turn restrictions)



*Vote here for Alternative 2*

## Alternative 3: 4-way stop at Beverly, 4-way stop at St. Anthony, 2-way stop at Doane



*Vote here for Alternative 3*