

HGA

City of Saint Paul

Duluth and Case Community Center

Community Advisory Committee Meeting 1: September 18, 2025



AGENDA

1. Introductions/Welcome – 10 mins
 - Project Background
 - General Scope & Vision
 - Project Schedule
2. Site Planning – 15 mins
 - Site Overview
 - Engagement Overview/Takeaways
 - Site Analysis/Inventory
 - Overall Schematic Site Concept
3. Building Planning – 15 mins
 - Engagement Overview/Takeaways
 - Plan Overview
 - Space Types
4. Q/A Discussion – 20 mins
5. Next Steps



INTRODUCTIONS/WELCOME

PROJECT BACKGROUND



System

assess needs of the system
Vision and Systems Plans
comprehensive plan

Context

geographic
historic

Budget

design · engineering · construction

Funding

source requirements

O & M

maintainable
sustainable

Regulatory

health · safety · welfare
federal, state, municipality

Community

design advisory committee
focus groups
survey results
neighborhood plan



City of Saint Paul Parks and Recreation

SCOPE & VISION

A modern, inclusive facility serving the Payne-Phalen community with recreation, fitness, aquatics, and programs for residents of all ages and backgrounds in the neighborhood and surrounding community.

GUIDING PRINCIPLES / SHARED PROJECT GOALS

1. **Flexible spaces** allowing for inclusive and evolving programs for all ages, needs, and interests.
2. **Durable, beautiful design** with strong community connection and ownership.
3. **Sustainable practices**, including visible energy use and responsible resource management.
4. **Accessible** via multiple transportation options (EV, bike, pedestrian, etc.).
5. **Serve the local neighborhood** while also being a regional draw.
6. **Active year-round programming** with a focus on both active and passive uses.
7. **A focal point for community gathering** with a clear identity and purpose.
8. **A functional, safe and welcoming space.**



PROJECT SCHEDULE

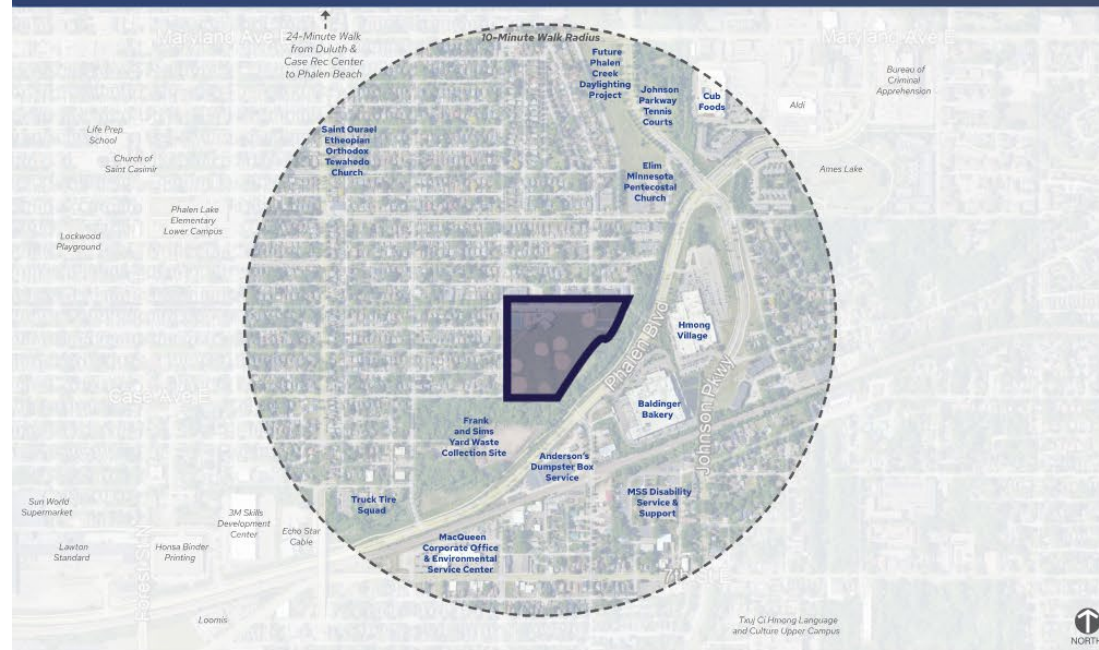
2024						2025							2026										2027												2028						
Dec	Jan	Feb	Mar	Apr	May	Jun	Jul	Aug	Sep	Oct	Nov	Dec	Jan	Feb	Mar	Apr	May	Jun	Jul	Aug	Sep	Oct	Nov	Dec	Jan	Feb	Mar	Apr	May	Jun	Jul										
Predesign						Schematic Design					Design Development					Construction Documents					Bid		Construction																		

CRITICAL MEETINGS | Schematic Design

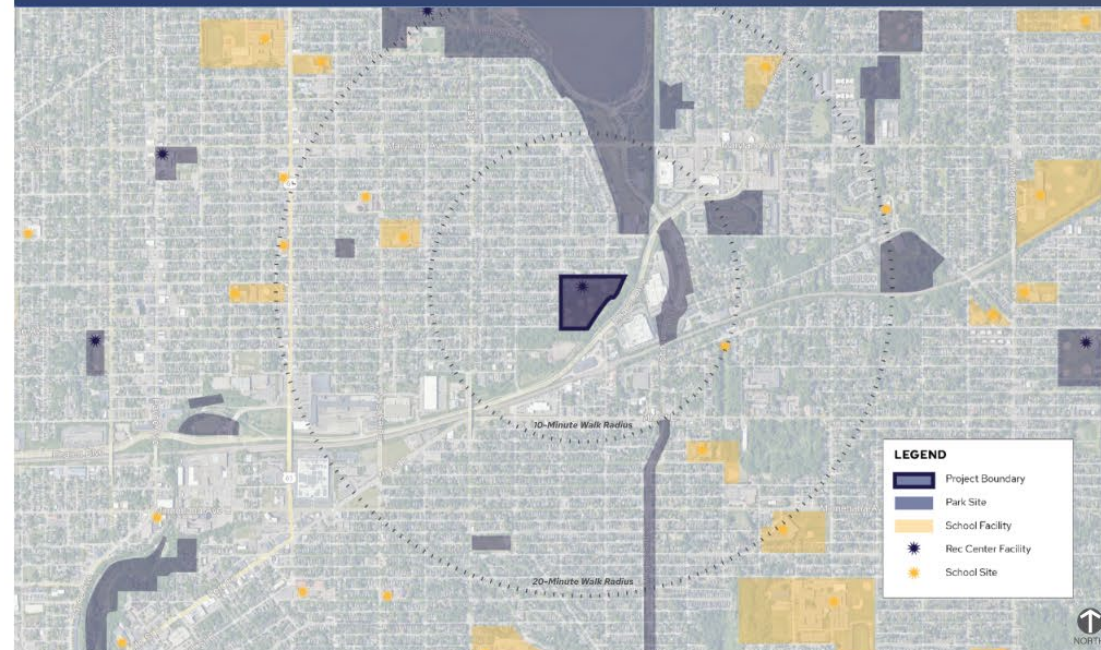
- Duluth and Case Engagement – June 4th
- Workshop #1: June 26th – SD Kickoff
 - B3/SB2030 Meeting – 7/1
 - Engineering OPR Focus – 7/11
 - REC Program Focus – 7/15
- Workshop #2: July 24th – Preferred Scheme, exterior material discussion
 - Space requirement meeting – Gyms, Fitness, Multipurpose, Office, etc. – 8/28
- Workshop #3: Augus 28th – Preferred Scheme, building massing and materials discussion
- CAC Meeting September 18th
- Resilience Workshop September 23rd
- Workshop #4: September 25th – Updated plans and elevations, interior concept, cost update
- Workshop #5: October 23rd – 100% SD , updated cost, updated Operational Plan

SITE PLANNING

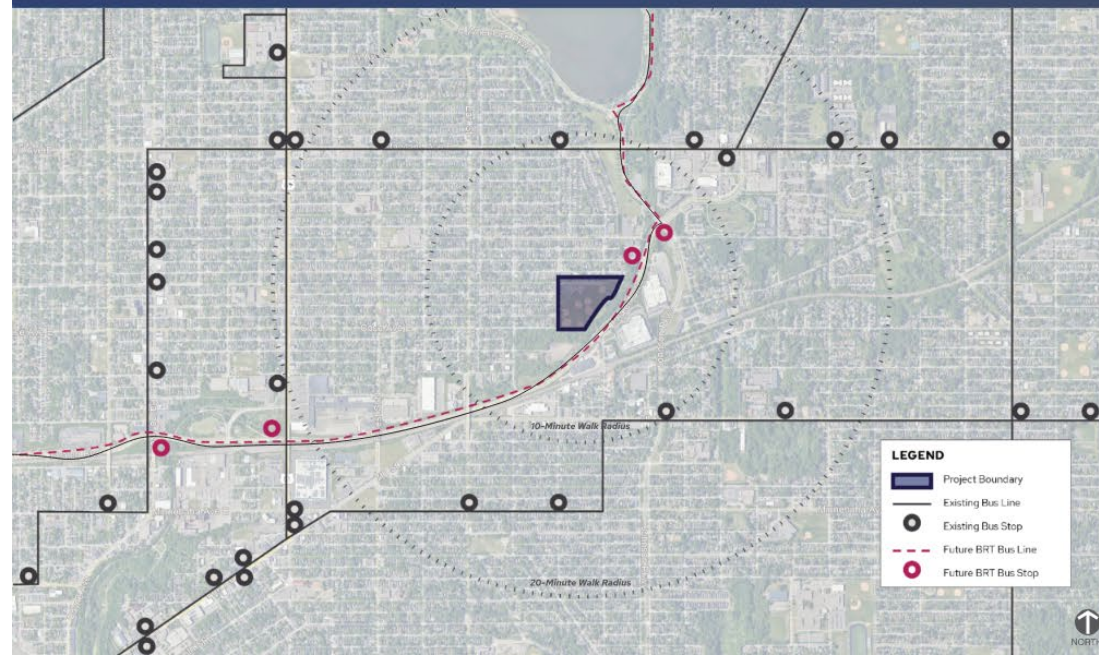
SITE CONTEXT: AMENITIES IN THE VICINITY



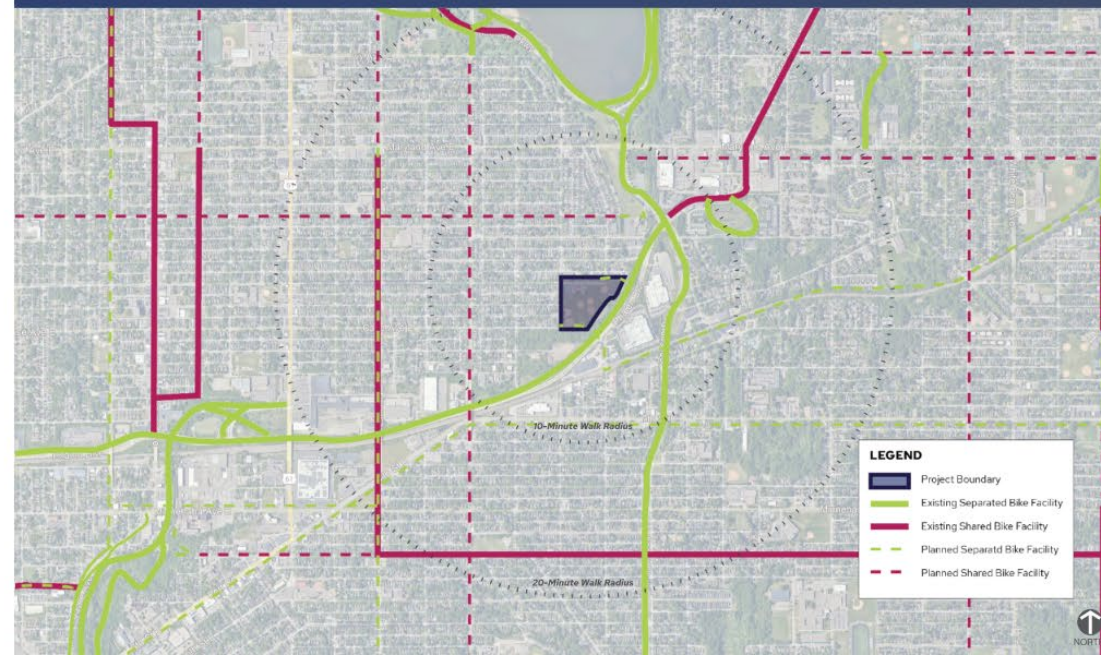
SITE CONTEXT: REC + SCHOOLS + PARKS



SITE CONTEXT: TRANSIT



SITE CONTEXT: BIKEWAYS



EXISTING SITE PLAN

- ① EXISTING BUILDING
- ② ORCHARD/GARDEN
- ③ PARKING
- ④ OUTDOOR PLAY AREA
- ⑤ BASEBALL/SOFTBALL FIELDS
- ⑥ FUTURE PURPLE LINE STOP
- ⑦ BRUCE VENTO TRAIL
- ⑧ TUJ LUB COURTS
- ⑨ SEPAK TAKRAW COURTS
- ⑩ TENNIS COURTS
- ⑪ FUTURE CONNECTION
- ⑫ HMONG VILLAGE



EXISTING SITE INVENTORY

LEGEND

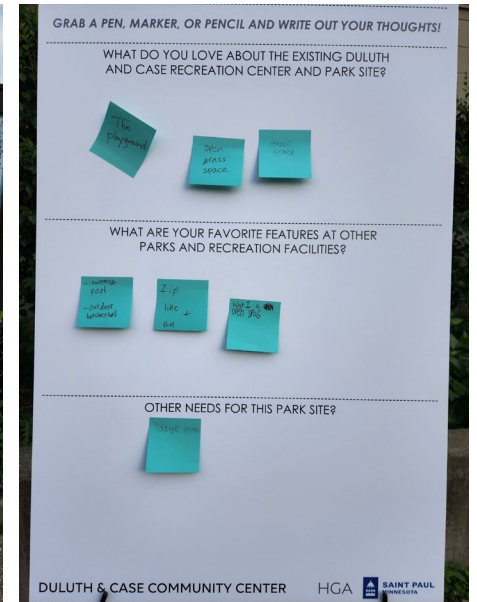
-  EXISTING STRUCTURES
-  PROJECT BOUNDARY
-  EXISTING FENCE
-  EXISTING TREE
-  EXISTING WOODLAND
-  SLOPE



ENGAGEMENT TAKEAWAYS - SITE

6/4 Open House Highlights

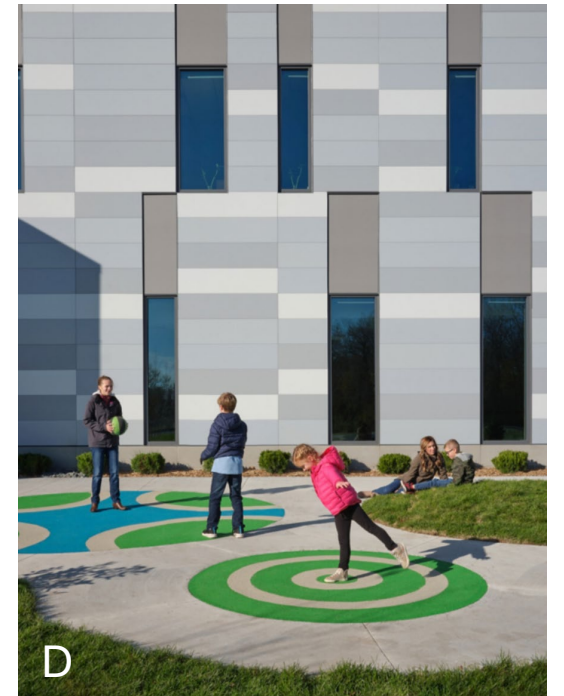
- **Playground, Open Space, Multipurpose Field, and outdoor Courts** are most desirable site amenities
- **Open space** is important to preserve
- Desire to expand the **Playground Area** and **Community Garden/Orchard**
- Support for **upgrading Sepak Takraw courts** and **expand Tuj Lub courts**
- **A new Outdoor basketball court space** is desired
- Trail/bike path is needed
- Support for **expanding bike/pedestrian trails**



OUTDOOR PROGRAM AMENITIES REVIEW

OUTDOOR / SITE AMENITIES

Open Space/Passive Use Spaces
Entry Plaza/Courtyard Spaces
Picnic Area(s)
Shade Structures
Playground
Multipurpose Field:
 Soccer Fields
 Football / Flag-Football Field
 Baseball Field
 Softball Field
Tuj Lub Courts
Sepak Takraw Courts
Tennis/Pickleball Courts
Basketball Court
Parking serving Site Amenities
Parking serving Building Spaces



A Brookview Community Center | Golden Valley, MN **B** Surly Brewing | Minneapolis, MN **C** Plymouth Community Center | Plymouth, MN **D** PrairieCare Medical Group Office Building | Rochester, MN

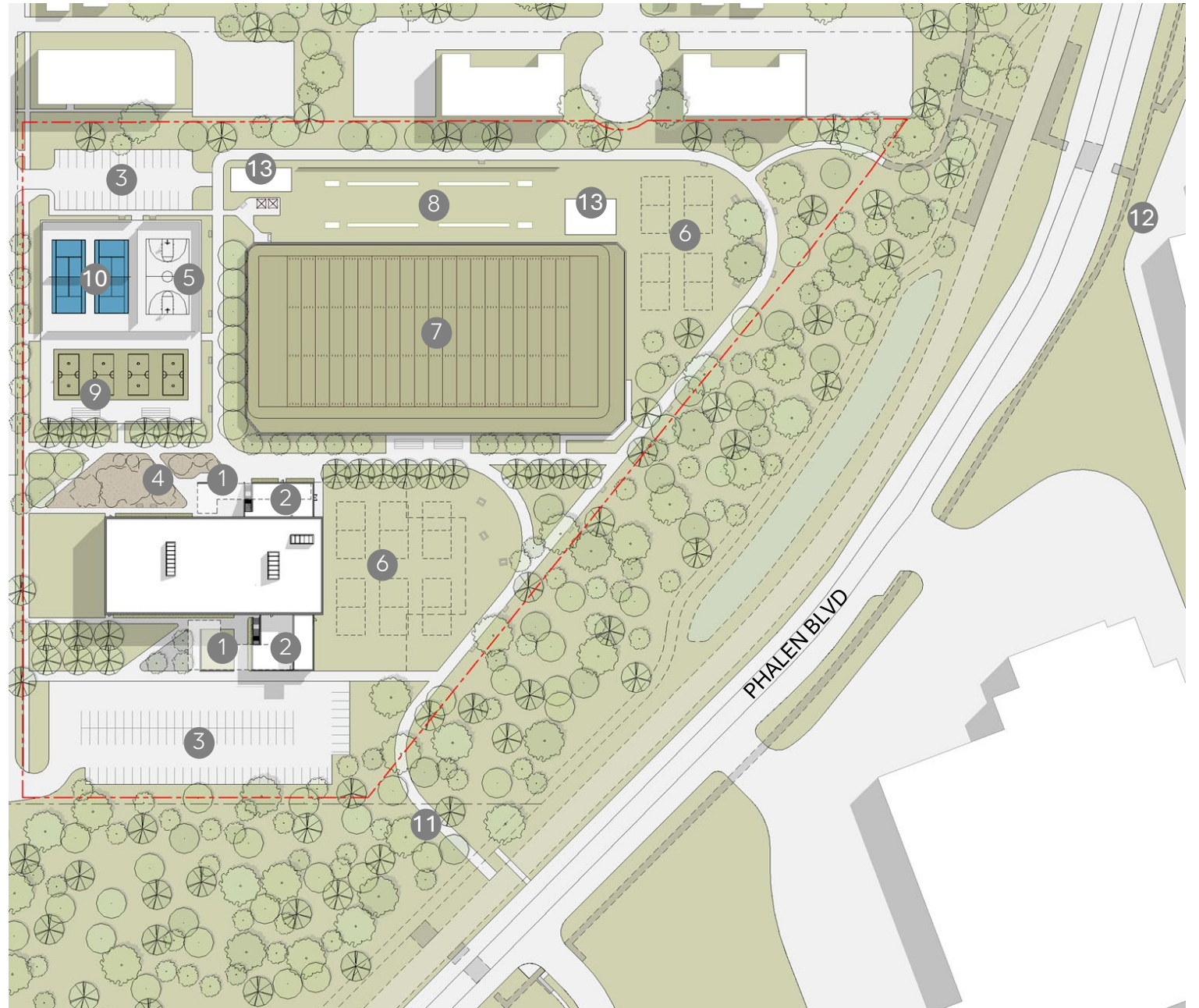
EXISTING SITE PLAN

- ① EXISTING BUILDING
- ② ORCHARD/GARDEN
- ③ PARKING
- ④ OUTDOOR PLAY AREA
- ⑤ BASEBALL/SOFTBALL FIELDS
- ⑥ FUTURE PURPLE LINE STOP
- ⑦ BRUCE VENTO TRAIL
- ⑧ TUJ LUB COURTS
- ⑨ SEPAK TAKRAW COURTS
- ⑩ TENNIS COURTS
- ⑪ FUTURE CONNECTION
- ⑫ HMONG VILLAGE



PROPOSED SITE PLAN

- ① ENTRY COURT
- ② ROOF TERRACE
- ③ PARKING
- ④ OUTDOOR PLAY AREA
- ⑤ BASKETBALL COURT
- ⑥ VOLLEYBALL COURTS / FLEX GREEN SPACE
- ⑦ MULTI-PURPOSE FIELD
- ⑧ TUJ LUB COURTS
- ⑨ SEPAK TAKRAW / BADMINTON COURTS
- ⑩ TENNIS / PICKLEBALL COURTS
- ⑪ CONNECTION TO BRUCE VENTO REGIONAL TRAIL
- ⑫ HMONG VILLAGE
- ⑬ COMMUNITY GARDEN



BUILDING PLANNING

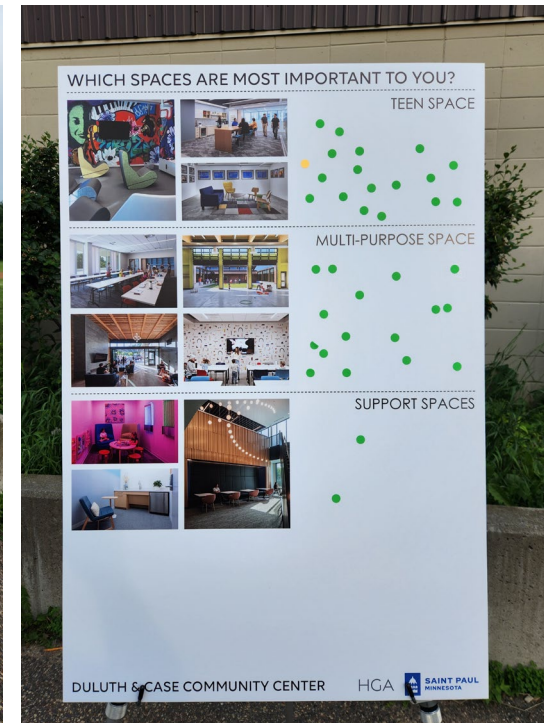
ENGAGEMENT TAKEAWAYS – BUILDING SPACES

6/4 Open House Highlights

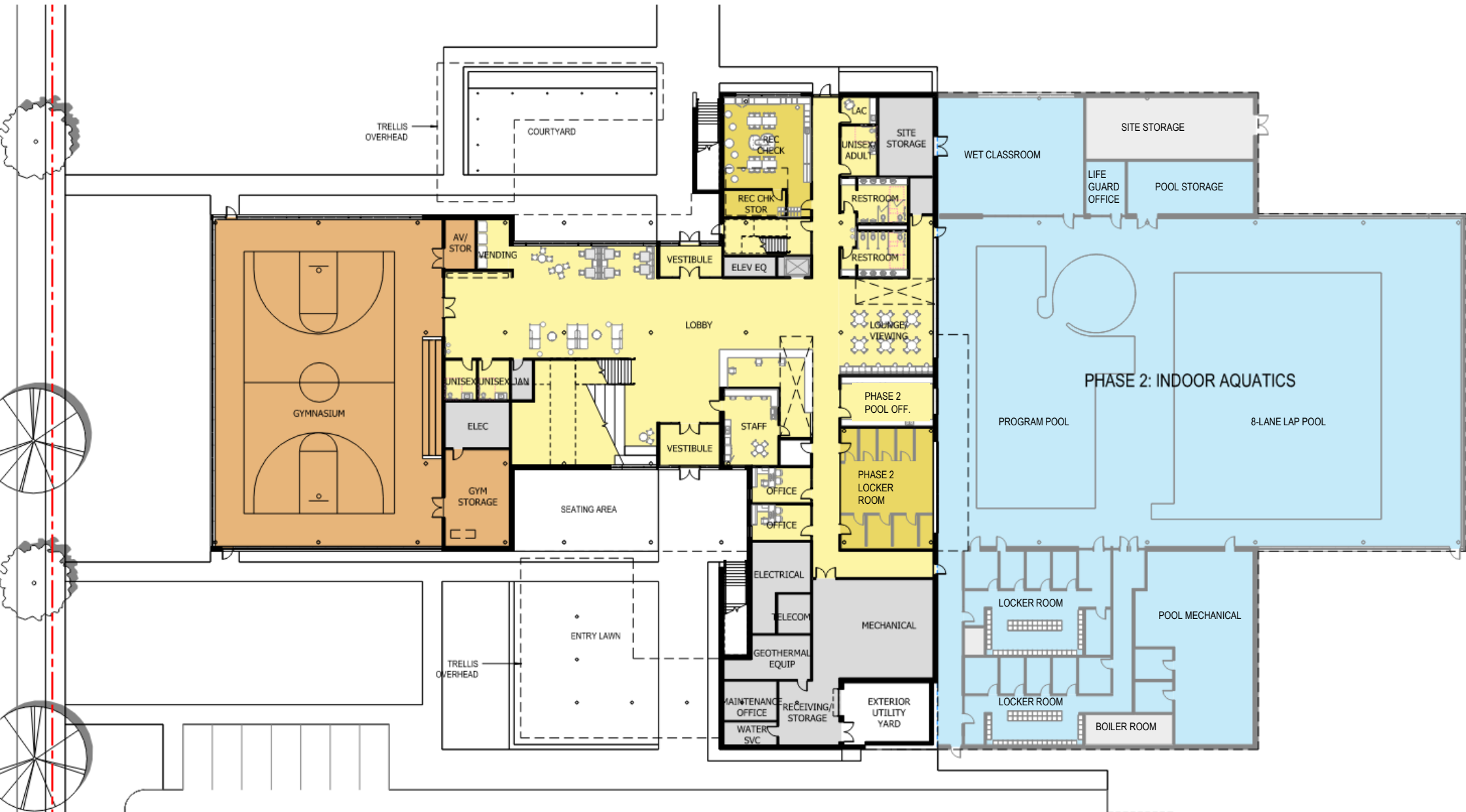
- **Gym, Fitness, Teen Space, Multipurpose Spaces and Pool** are most desirable building amenities
- A **large Gym** and **Pool** are desirable here

Youth Commission Survey Takeaways

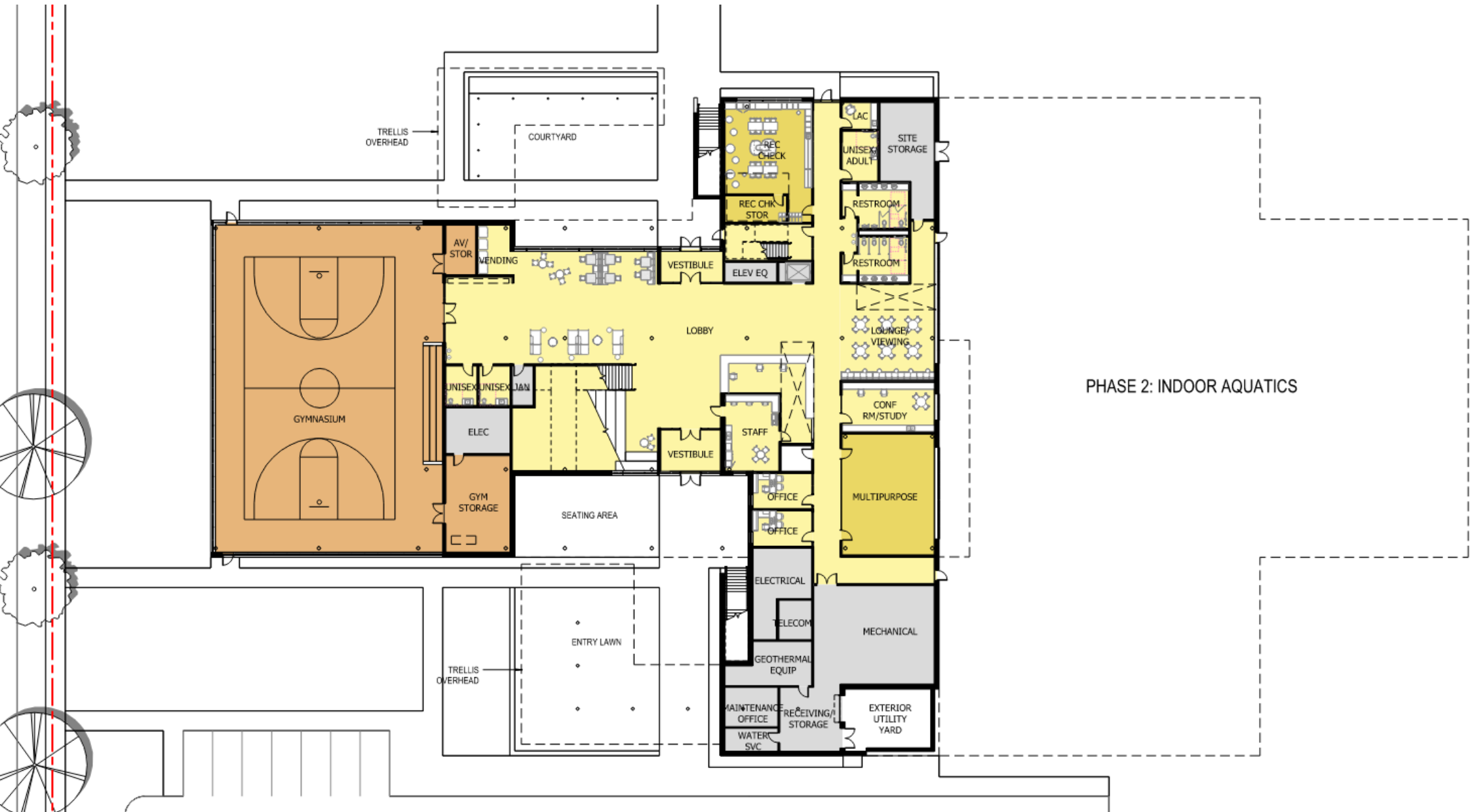
- Design should prioritize **flexible, multi-use spaces**, especially for **sports**
- Youth would like **modern amenities** like Esports rooms, vending machines, and quiet spaces
- **Safety and a sense of community** are key – staff presence matters
- Consider how to make the center **more welcoming to all backgrounds**, both visually and programmatically



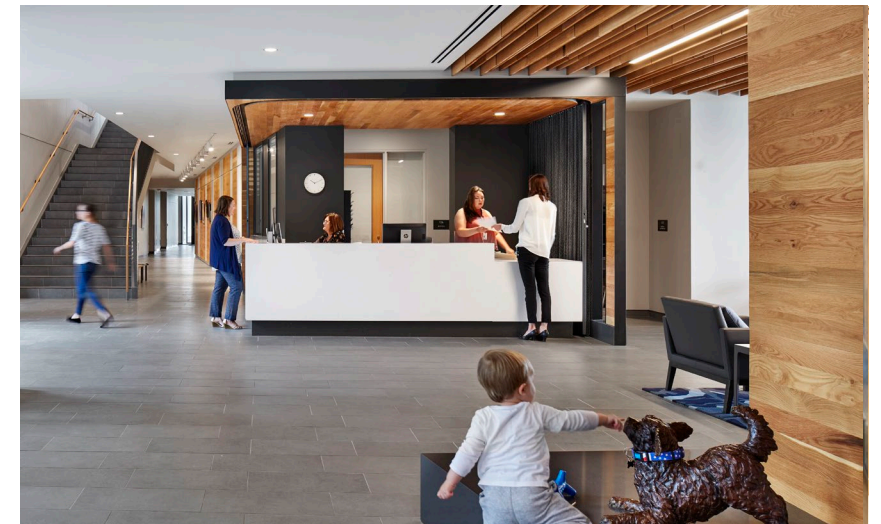
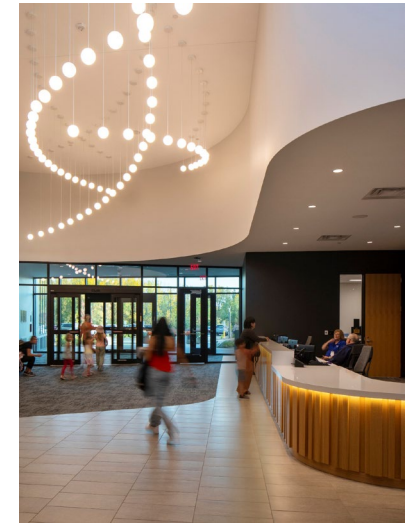
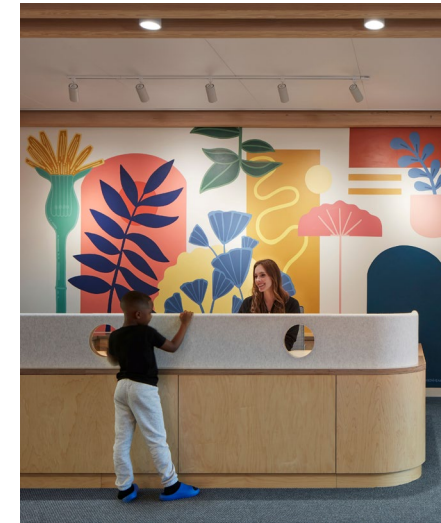
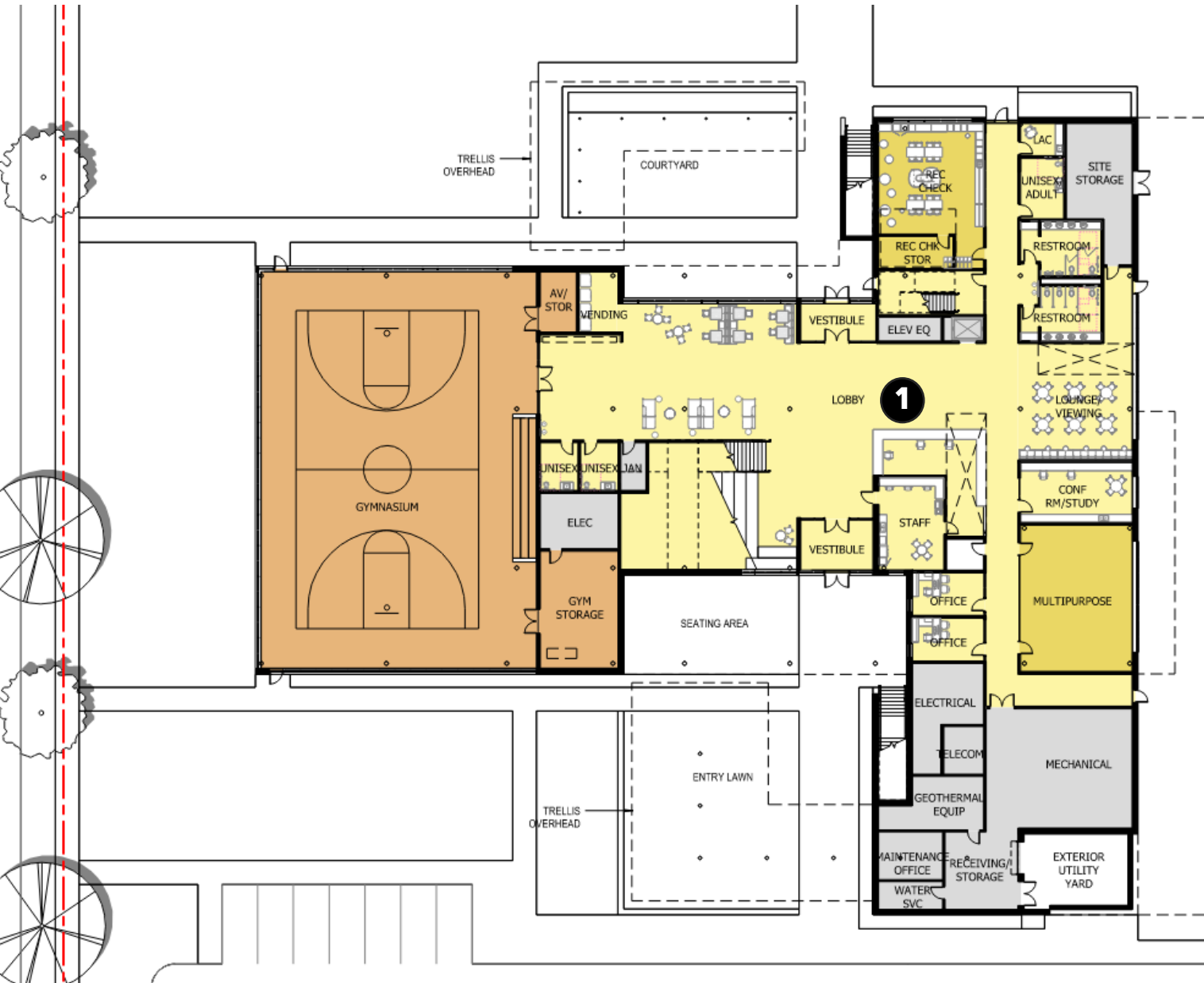
MAIN LEVEL: ALL PHASES



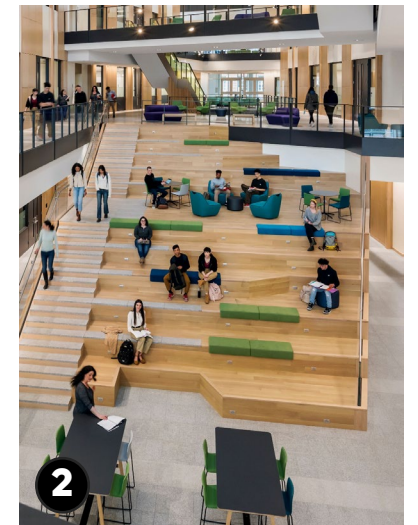
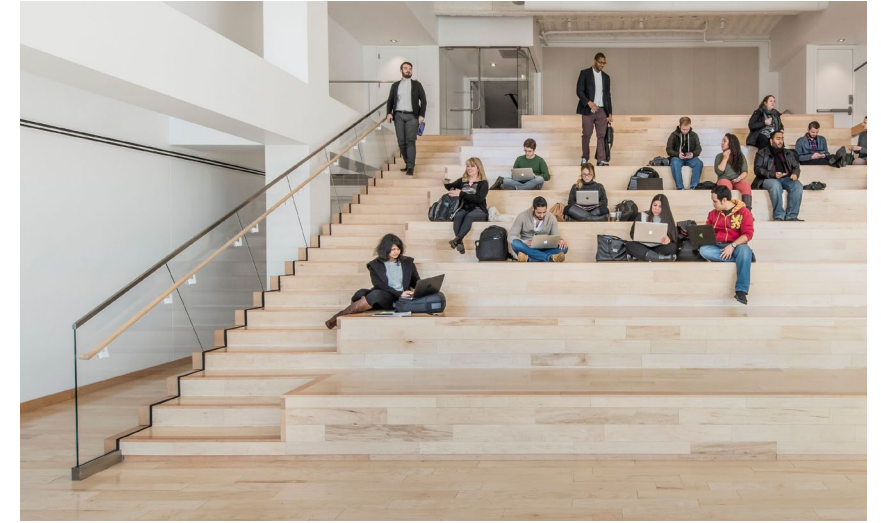
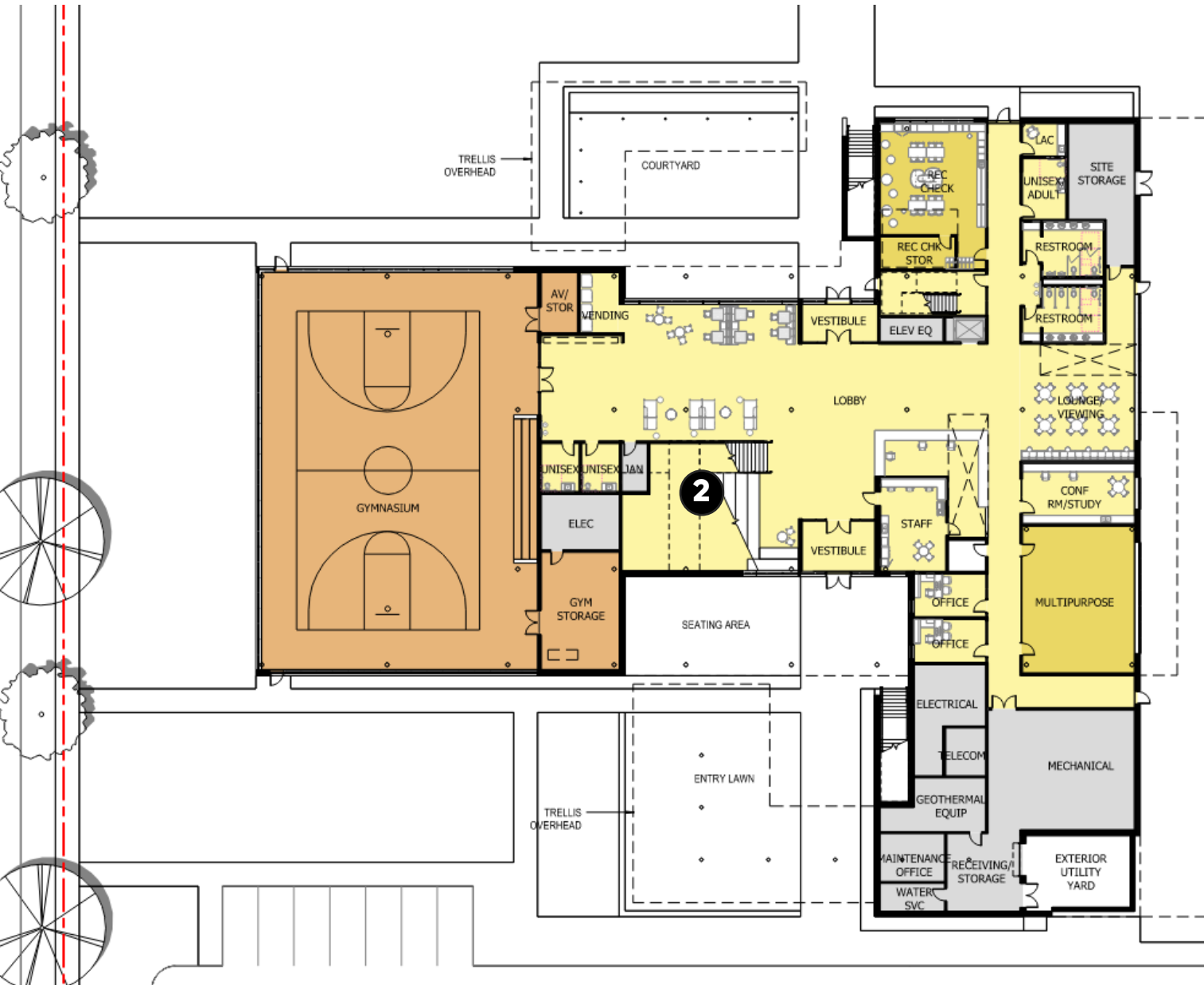
MAIN LEVEL: PHASE 1



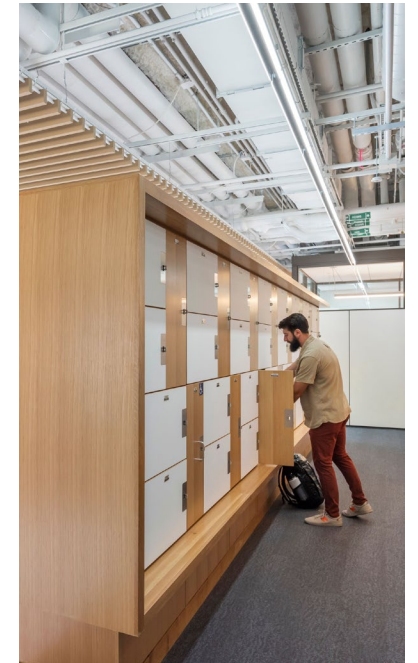
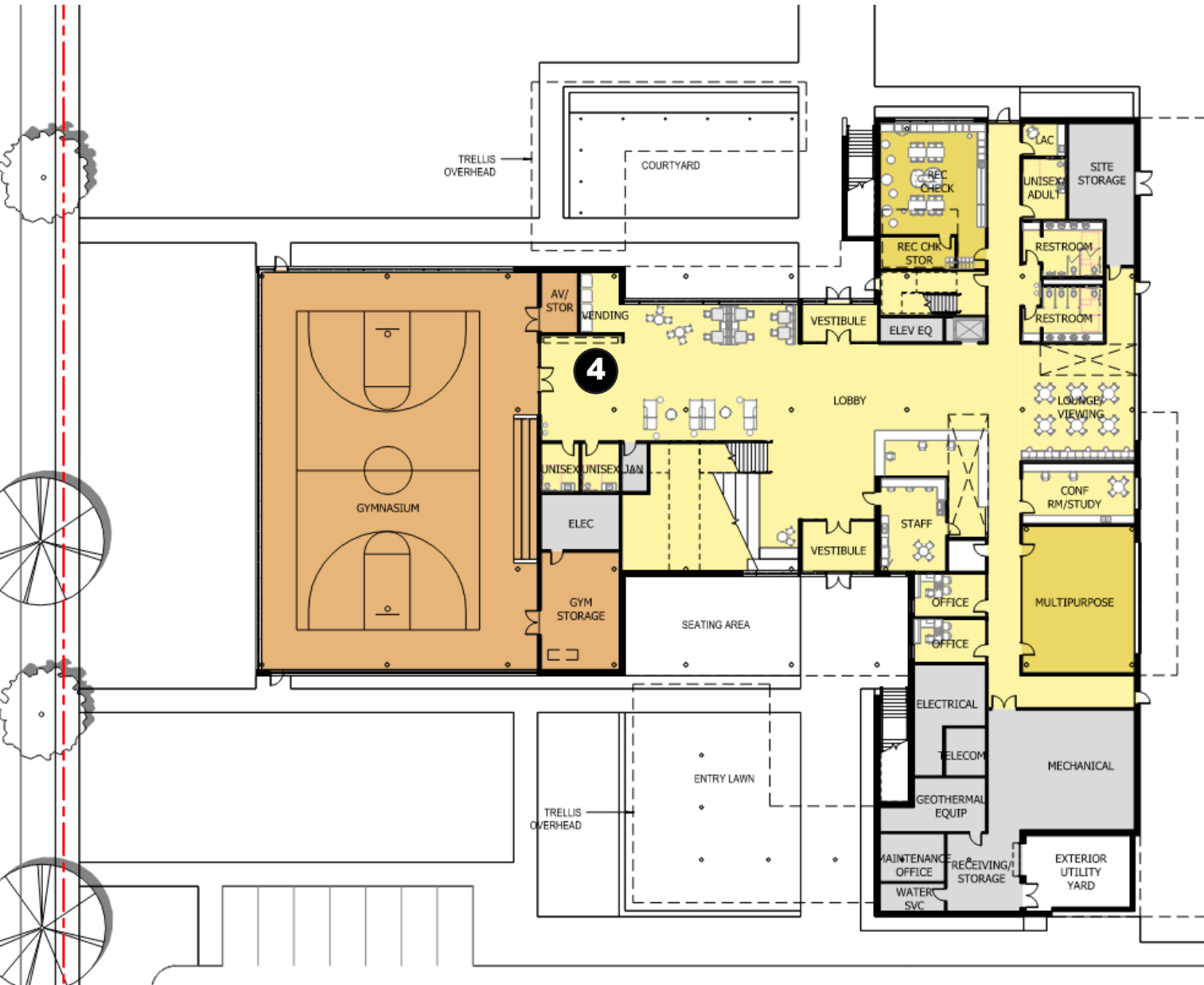
MAIN LEVEL: RECEPTION/WELCOME



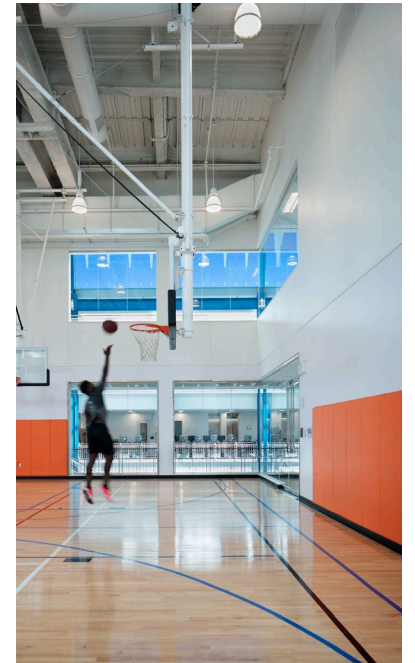
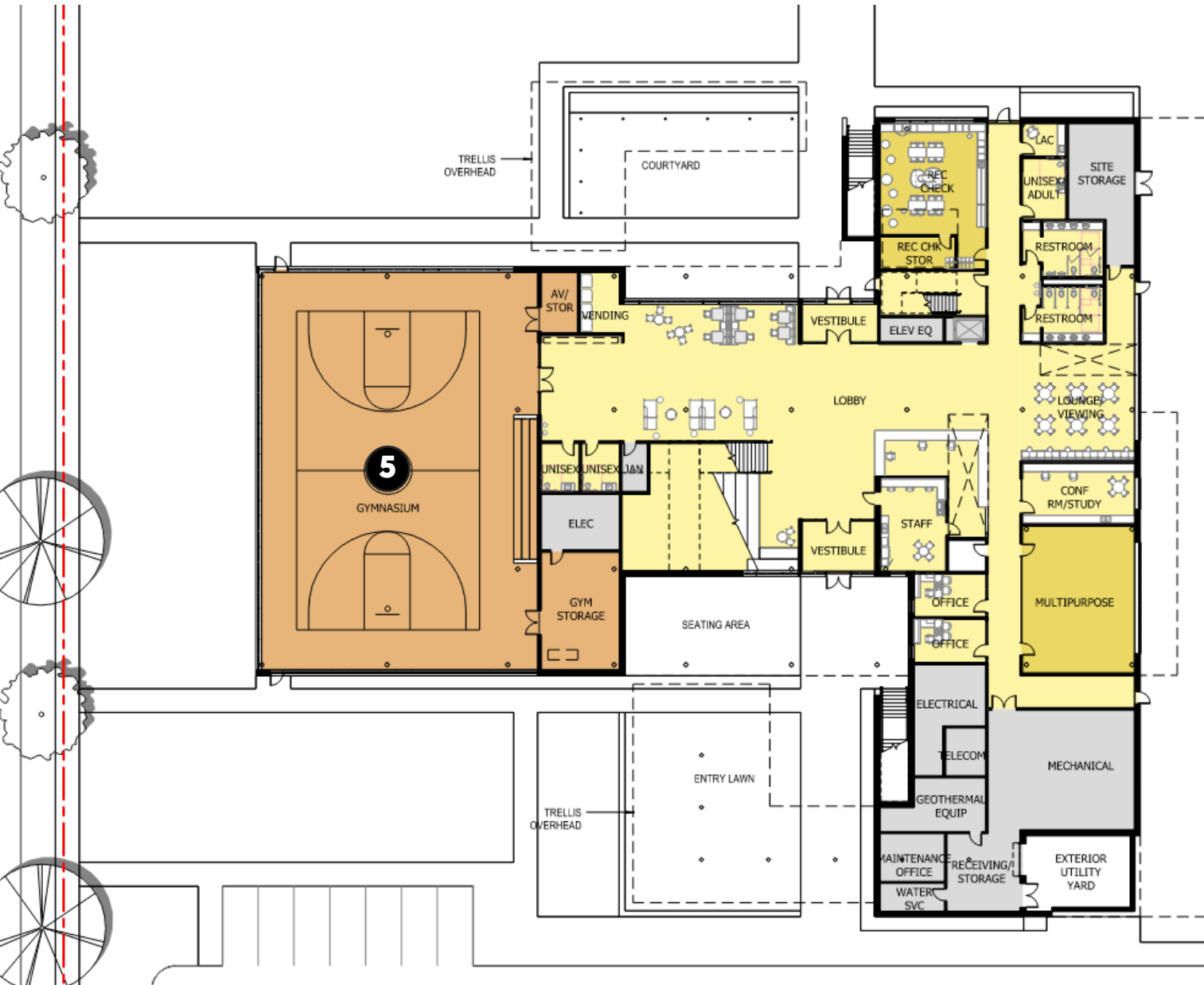
MAIN LEVEL: BLEACHER STAIR



MAIN LEVEL: LOCKER AREA

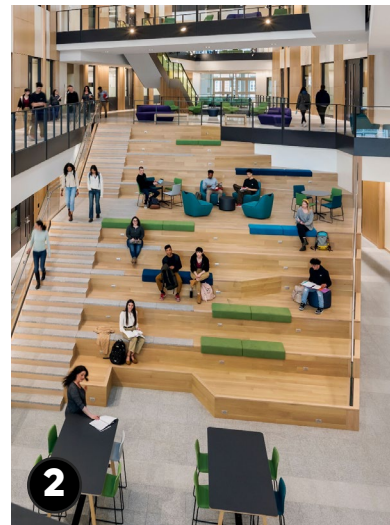


MAIN LEVEL: GYMNASIUM

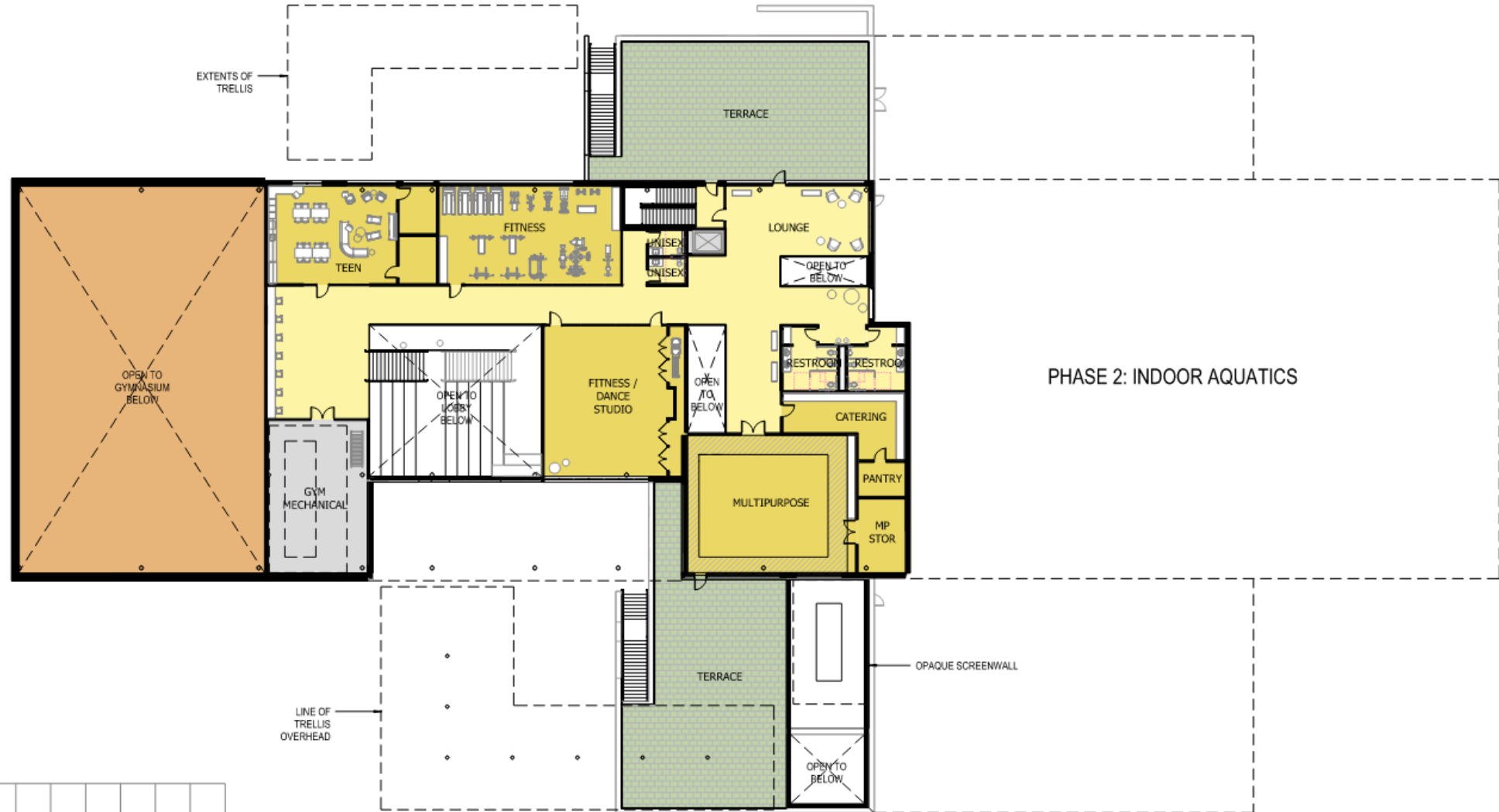


The floor plan illustrates the layout of the University of California, Berkeley Student Center. Key areas include:

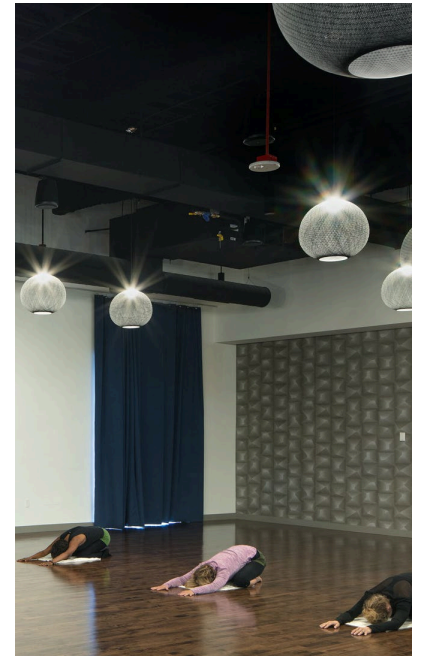
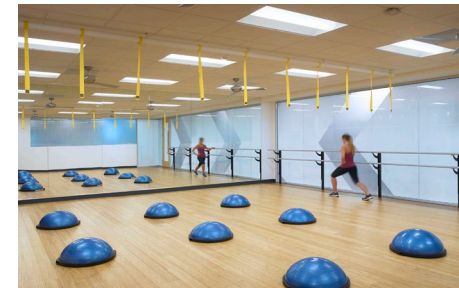
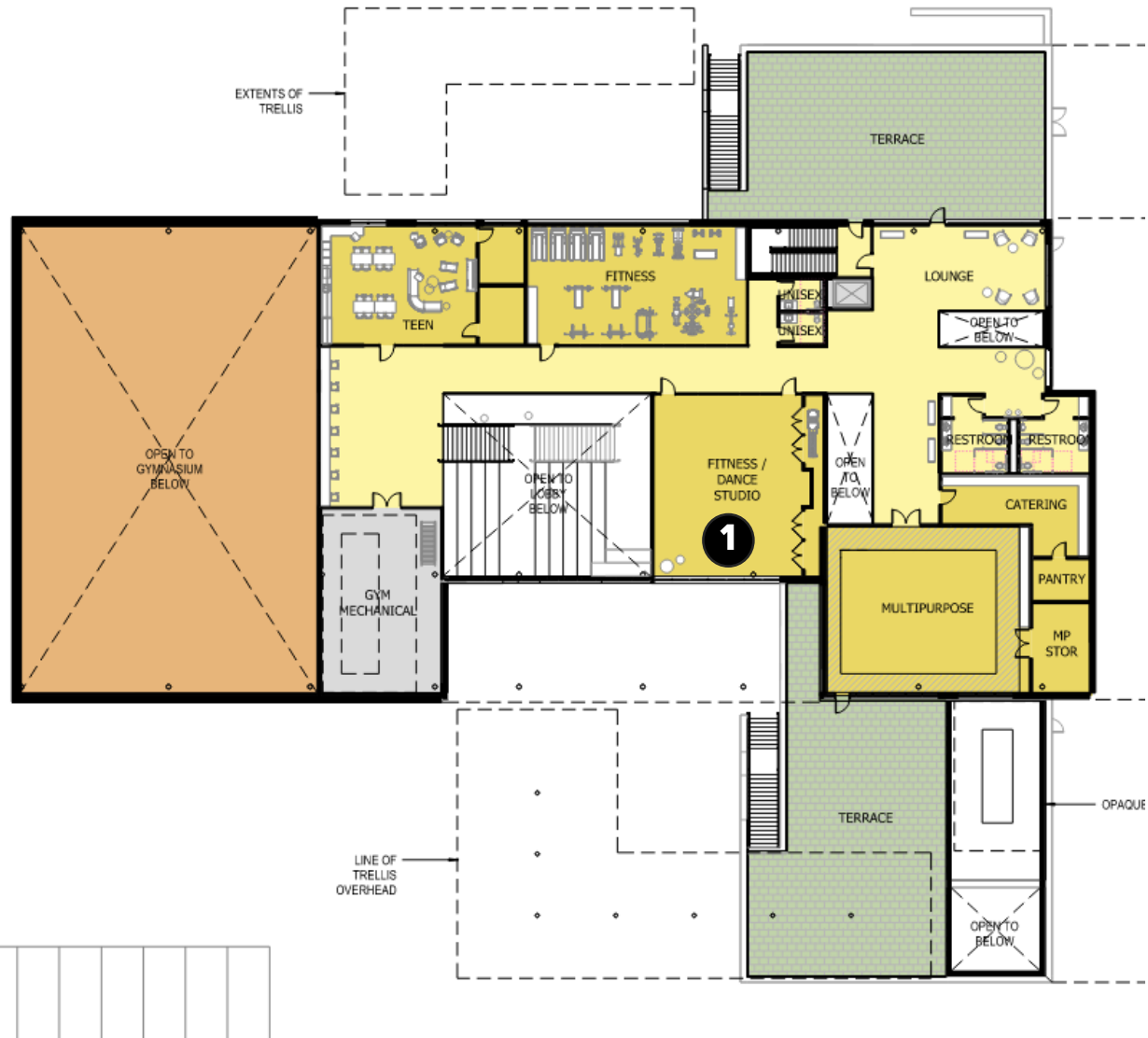
- 5 GYMNASIUM:** A large orange-shaded area on the left side of the plan.
- 1 LOBBY:** A central yellow-shaded area containing a seating area and stairs.
- 3 MULTIPURPOSE:** A yellow-shaded room on the right side.
- 2:** A yellow-shaded area adjacent to the lobby, containing stairs and restrooms.
- Other rooms and areas:** AV/STOR, VENDING, ELEC, GYM STORAGE, SEATING AREA, VESTIBULE, STAFF, OFFICE, ELECTRICAL, TELECOM, GEOTHERMAL EQUIP, MAINTENANCE OFFICE, RECEIVING/STORAGE, WATER SVC, EXTERIOR UTILITY YARD, CONF RM/STUDY, LOUNGE/VIEWING, RESTROOM, UNISEX ADULT, SITE STORAGE, REC CHK, STOR, ELEV EQ, and COURT YARD.
- Outdoor features:** TRELLIS OVERHEAD, ENTRY LAWN, and EXTERIOR UTILITY YARD.



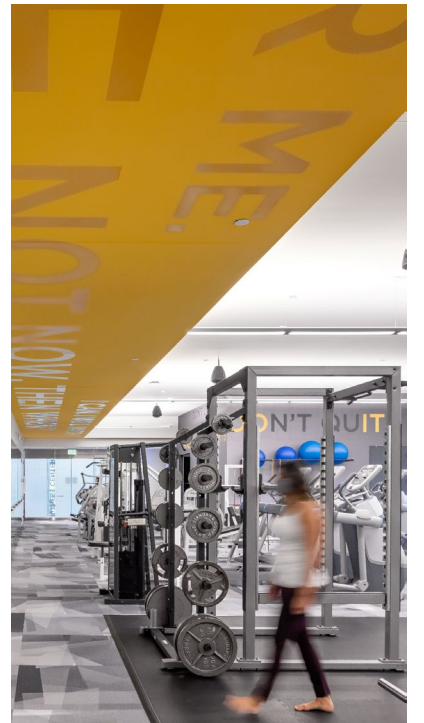
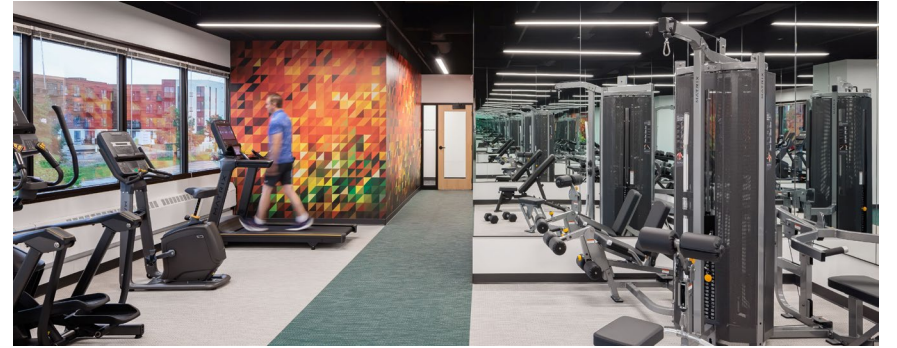
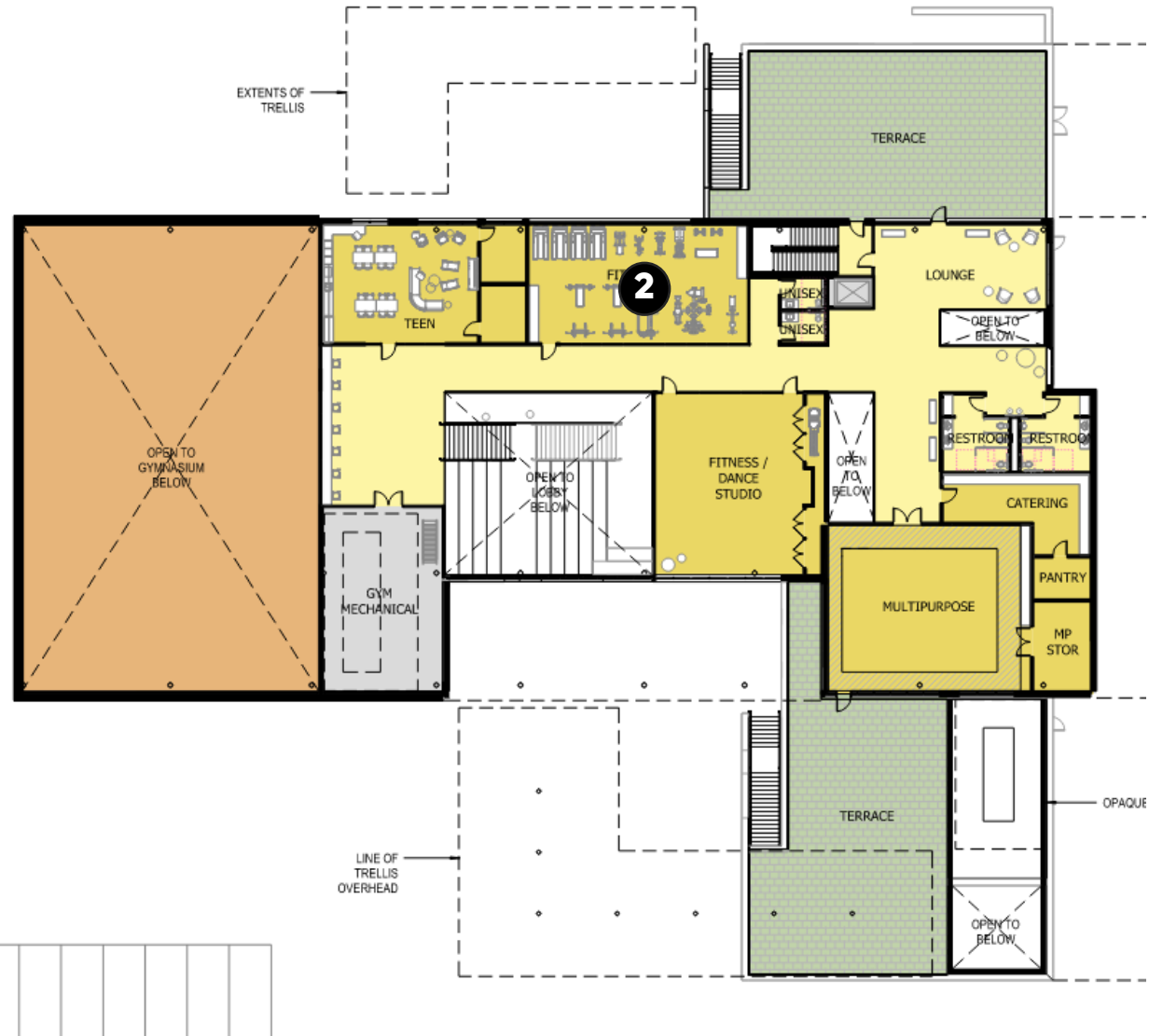
UPPER LEVEL



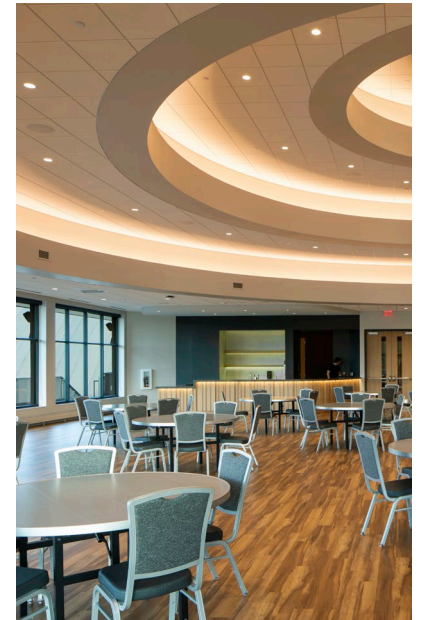
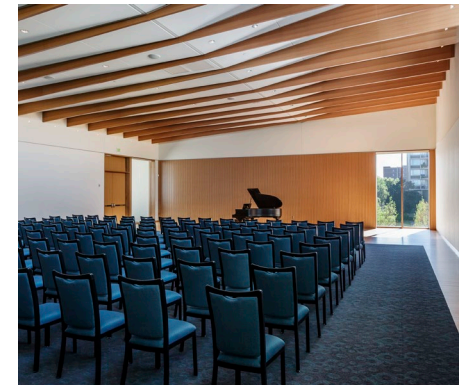
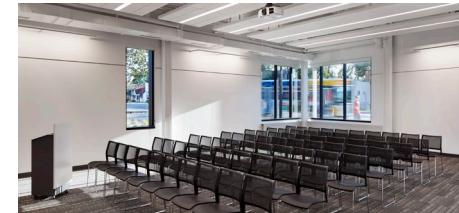
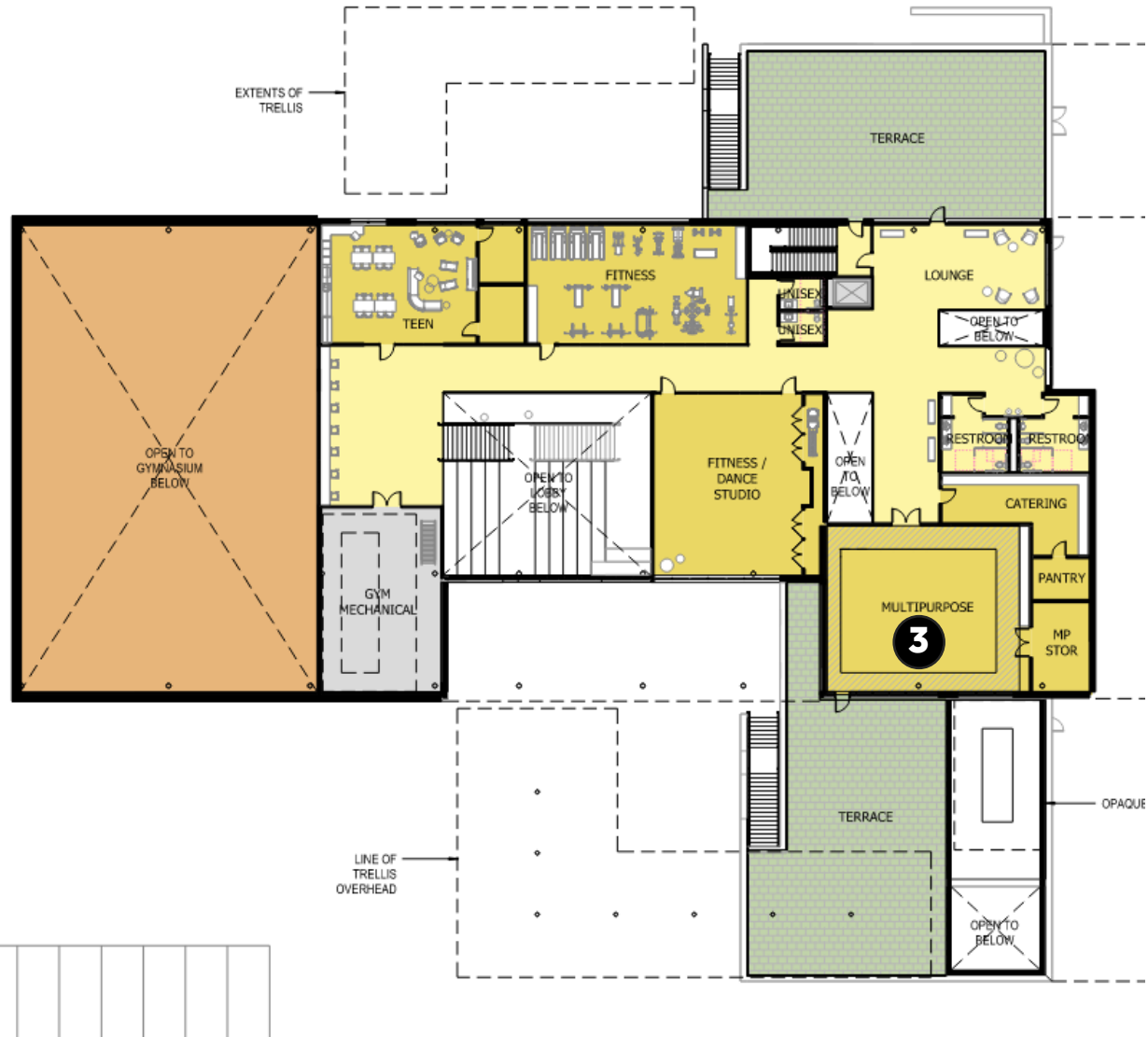
UPPER LEVEL: FITNESS/DANCE STUDIO



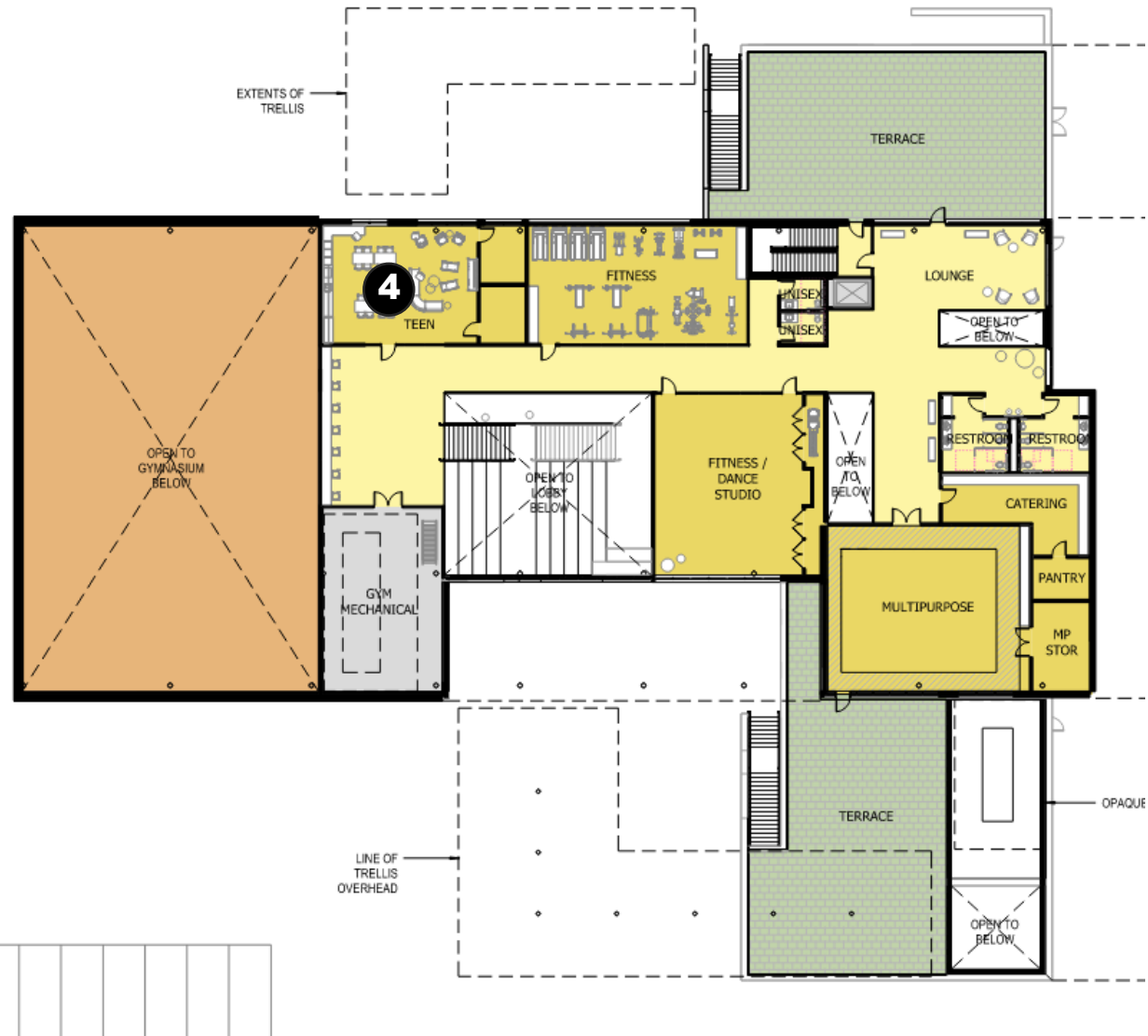
UPPER LEVEL: FITNESS SPACE

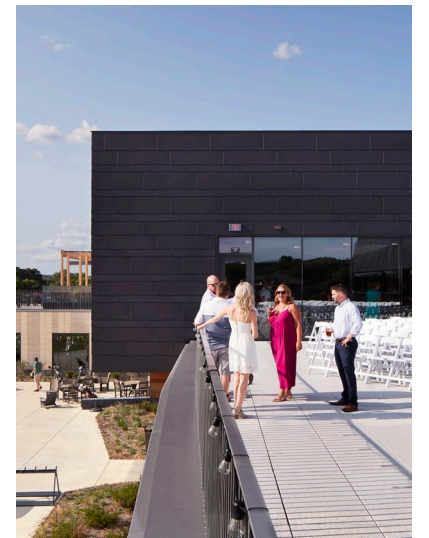


UPPER LEVEL: MULTIPURPOSE ROOM

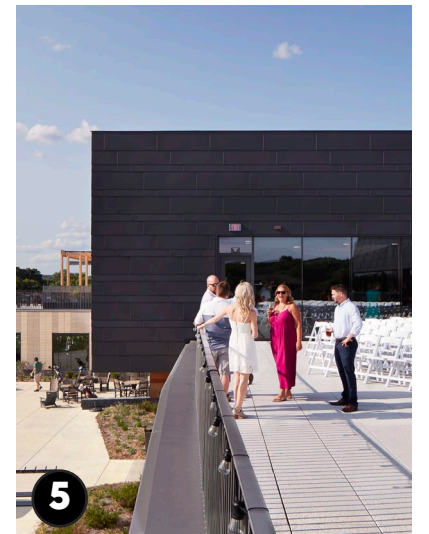
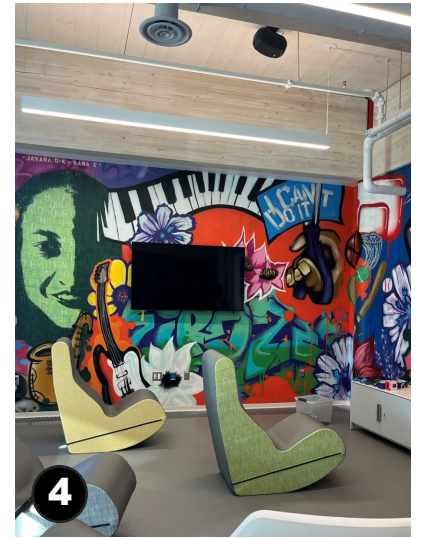
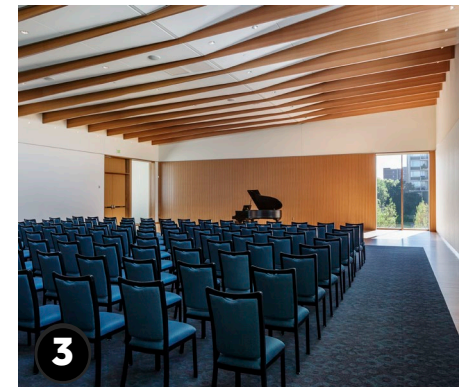
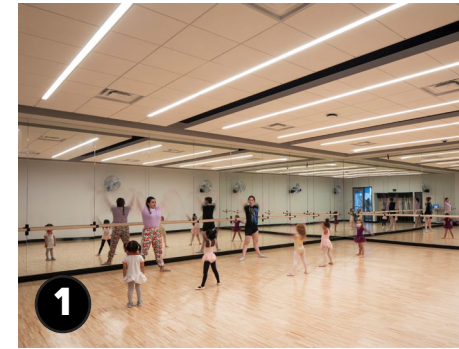
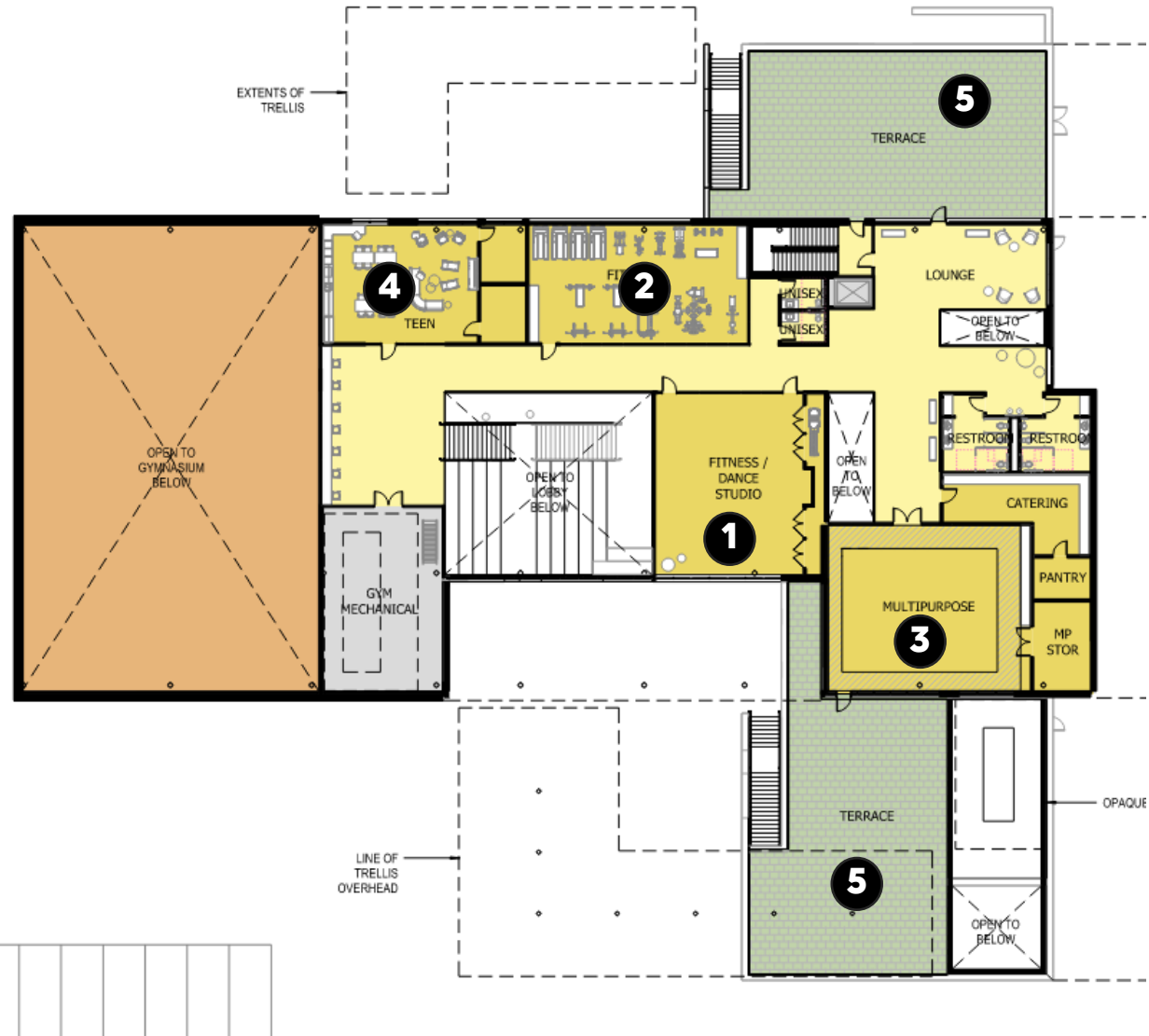


UPPER LEVEL: TEEN SPACE





UPPER LEVEL PROGRAM SPACES



Q&A DISCUSSION

Q&A DISCUSSION PROMPTS

What would invite you to spend time at the new building, or make you feel welcome there?

What would invite you to spend time at the park, or make you feel welcome there?

What types of activities would you like to see supported at the park? In the building?

Are there places or spaces in your community that are most important to you? What are they like?

Are there patterns, colors, materials, objects, or symbols that are particularly meaningful to you?

What would make this park and building feel like you belong there?

THANK YOU!

Feedback due by Friday October 3rd

Email to Meredith Ver Steeg

meredith.ver.steeg@ci.stpaul.mn.us