

HGA

City of Saint Paul Duluth and Case Community Center

Community Advisory Committee Meeting 2: November 06, 2025



AGENDA

1. Introductions/Welcome – 5 mins
 - Project Charter Overview
2. Site Planning Updates – 15 mins
 - Site Plan Review
3. Building Planning Updates – 20 mins
 - Building Plan Review
 - Concept Drivers
 - Exterior Views
 - Interior Views
4. Q+A Discussion – 15 mins
5. Next Steps
 - Project Schedule



Brookview Community Center | Golden Valley, MN

PROJECT CHARTER

VISION

A modern, inclusive facility serving the Payne-Phalen community with recreation, fitness, aquatics, and programs for residents of all ages and backgrounds in the neighborhood and surrounding community.

GUIDING PRINCIPLES

- 1. Flexible spaces allowing for inclusive and evolving programs for all ages, needs, and interests.
- 2. Durable, beautiful design with strong community connection and ownership.
- 3. Sustainable practices, including visible energy use and responsible resource management.
- 4. Accessible via multiple transportation options (EV, bike, pedestrian, etc.).
- 5. Serve the local neighborhood while also being a regional draw.
- 6. Active year-round programming with a focus on both active and passive uses.
- 7. A focal point for community gatherings with a clear identity and purpose.
- 8. Create a functional, safe and welcoming space.

SCOPE/PROGRAM	PROJECT GOALS	SCHEDULE	BUDGET
<ul style="list-style-type: none">Indoor AquaticsFitness / GymnasiumMultipurpose / Event SpaceRec CheckTeen SpaceCommunity Center AdminCommon AreasMulti – Purpose Athletic FieldTrail LoopRetention of Outdoor CourtsPlayground	<p>SUSTAINABILITY GOALS</p> <ul style="list-style-type: none">1. Meet Minnesota B3 Guidelines2. Comply with Saint Paul Sustainable Building Ordinance3. SB2030 Target EUI = 14.9 kbtu/sf <p>EQUITY GOALS</p> <ul style="list-style-type: none">1. Provide learn to swim programming for the local community2. Provide inclusive Locker Rooms, Restrooms and other infrastructure	<p>Programming/Concept Design Dec 2024 – May 2025</p> <p>Schematic Design Jun 2025 – Oct 2025</p> <p>Design Development Nov 2025– Mar 2026</p> <p>Construction Documents Apr 2026 – Oct 2026</p> <p>Bid Nov 2026 – Jan 2027</p> <p>Construction Feb 2027 – Jul 2028</p>	<p>Total Project Budget: \$35M-\$40M</p>

SITE REVIEW

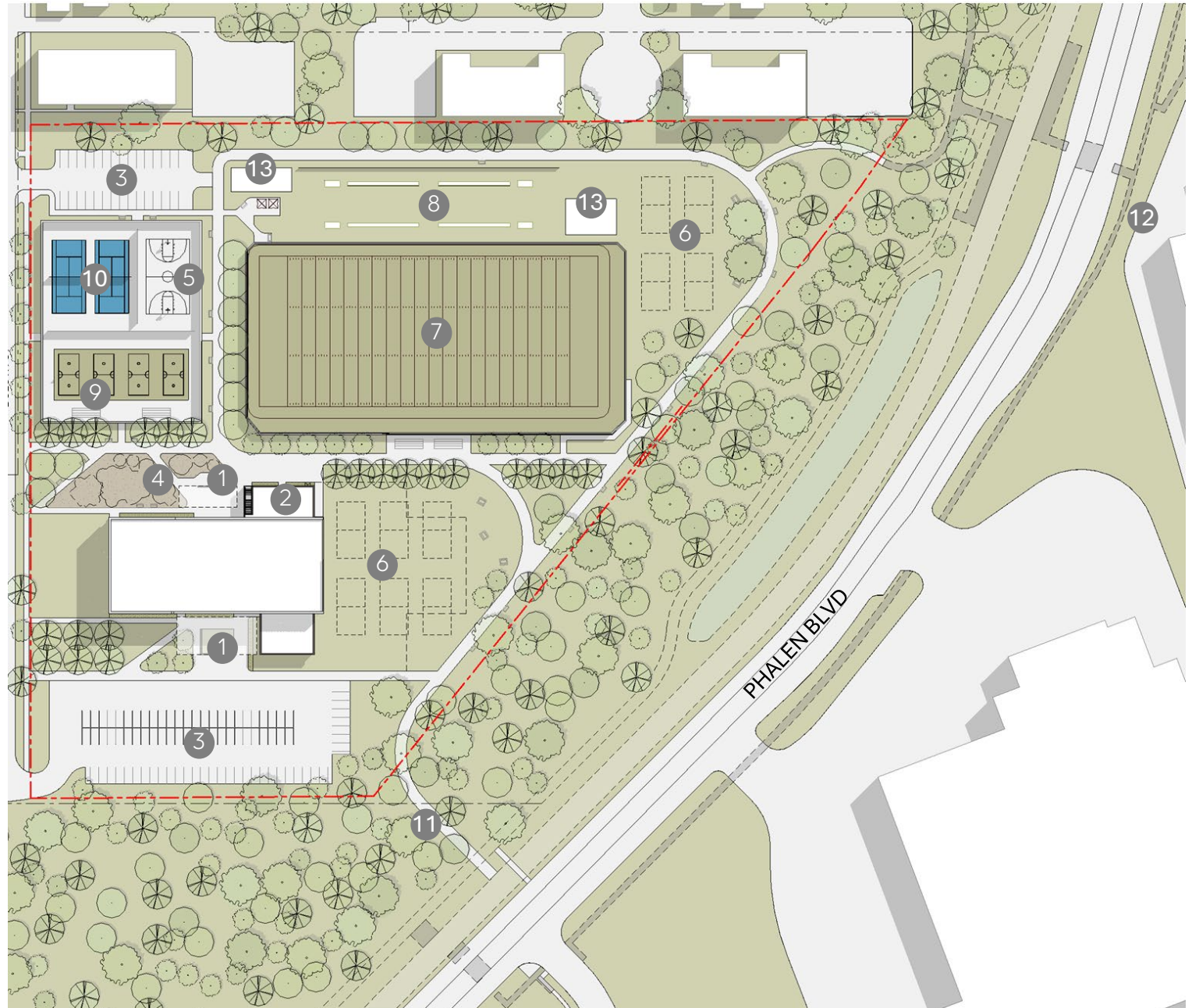
EXISTING SITE PLAN

- ① EXISTING BUILDING
- ② ORCHARD/GARDEN
- ③ PARKING
- ④ OUTDOOR PLAY AREA
- ⑤ BASEBALL/SOFTBALL FIELDS
- ⑥ FUTURE PURPLE LINE STOP
- ⑦ BRUCE VENTO TRAIL
- ⑧ TUJ LUB COURTS
- ⑨ SEPAK TAKRAW COURTS
- ⑩ TENNIS COURTS
- ⑪ FUTURE CONNECTION
- ⑫ HMONG VILLAGE



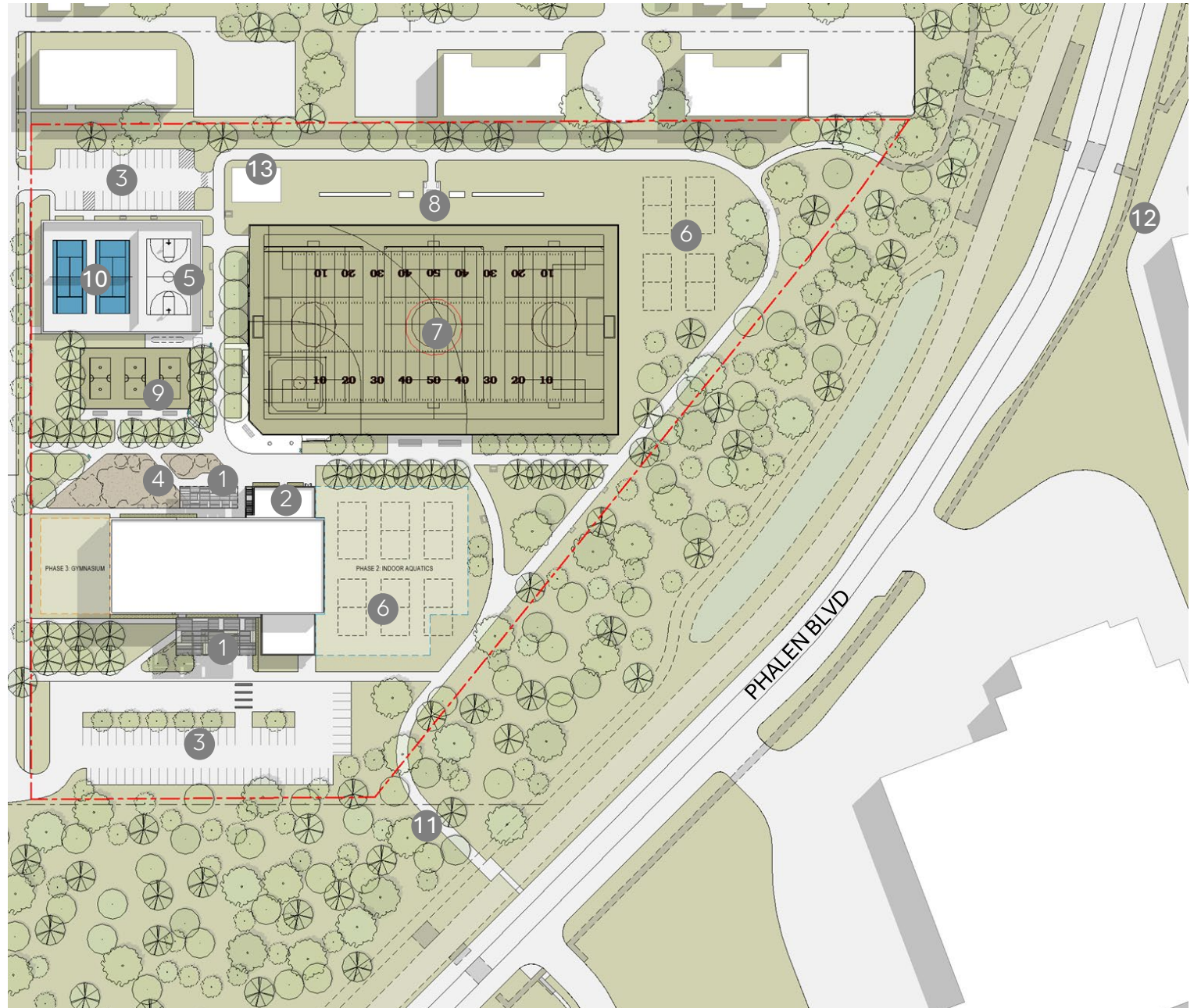
PROPOSED SITE PLAN – 9/18/25

- ① ENTRY COURT
- ② ROOF TERRACE
- ③ PARKING (117 stalls max)
- ④ OUTDOOR PLAY AREA
- ⑤ BASKETBALL COURT
- ⑥ VOLLEYBALL COURTS / FLEX GREEN SPACE
- ⑦ MULTI-PURPOSE FIELD
- ⑧ TUJ LUB COURTS
- ⑨ SEPAK TAKRAW / BADMINTON COURTS
- ⑩ TENNIS / PICKLEBALL COURTS
- ⑪ CONNECTION TO BRUCE VENTO REGIONAL TRAIL
- ⑫ HMONG VILLAGE
- ⑬ COMMUNITY GARDEN



PROPOSED SITE PLAN - UPDATED

- ① ENTRY COURT
- ② ROOF TERRACE
- ③ PARKING (117 stalls max)
- ④ OUTDOOR PLAY AREA
- ⑤ BASKETBALL COURT
- ⑥ VOLLEYBALL COURTS / FLEX GREEN SPACE
- ⑦ MULTI-PURPOSE FIELD
- ⑧ TUJ LUB COURTS
- ⑨ SEPAK TAKRAW / BADMINTON COURTS
- ⑩ TENNIS / PICKLEBALL COURTS
- ⑪ CONNECTION TO BRUCE VENTO REGIONAL TRAIL
- ⑫ HMONG VILLAGE
- ⑬ COMMUNITY GARDEN

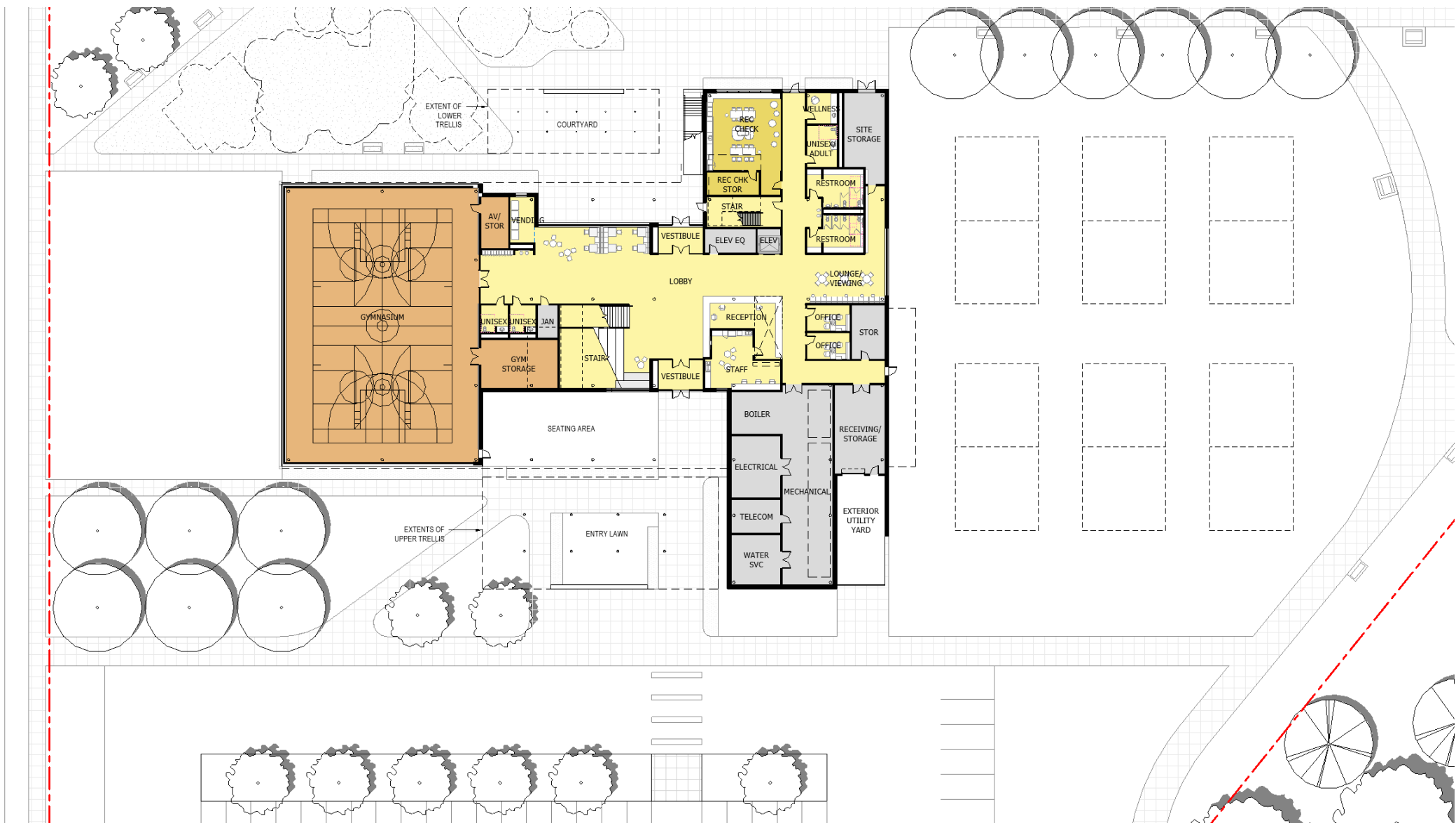


SITE CONCEPTS + INSPIRATION

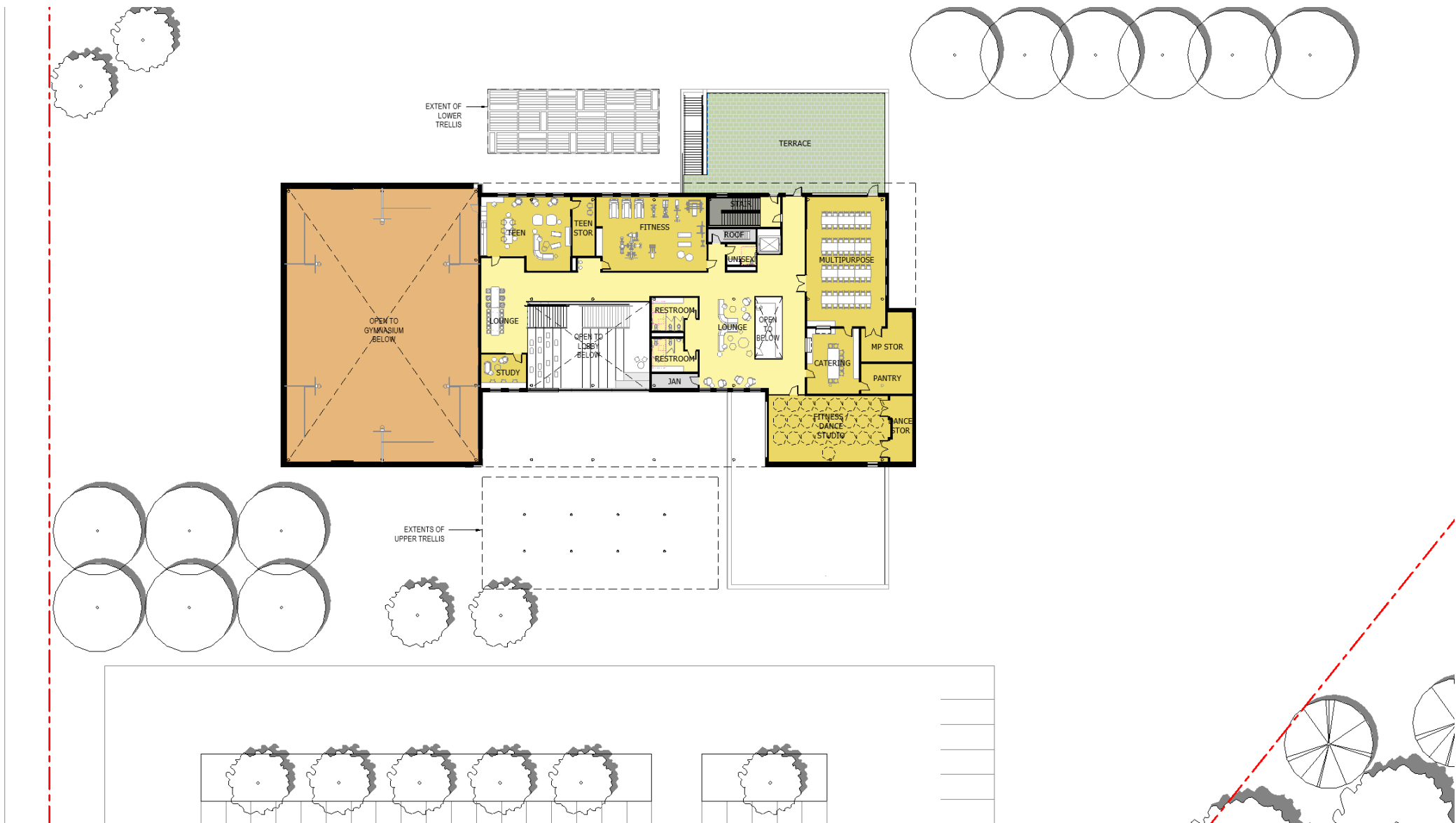


PLAN UPDATES

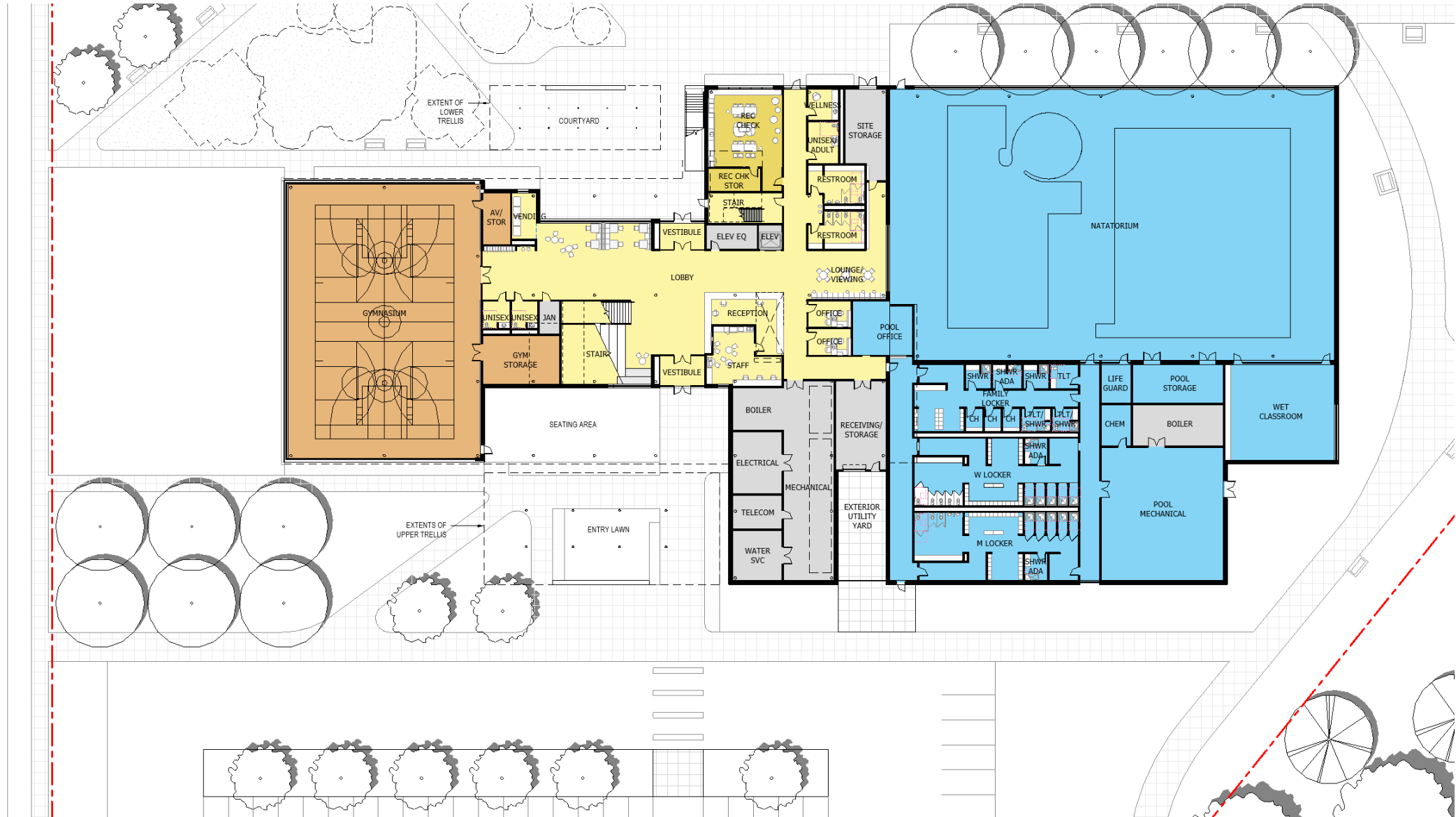
MAIN LEVEL: PHASE 1



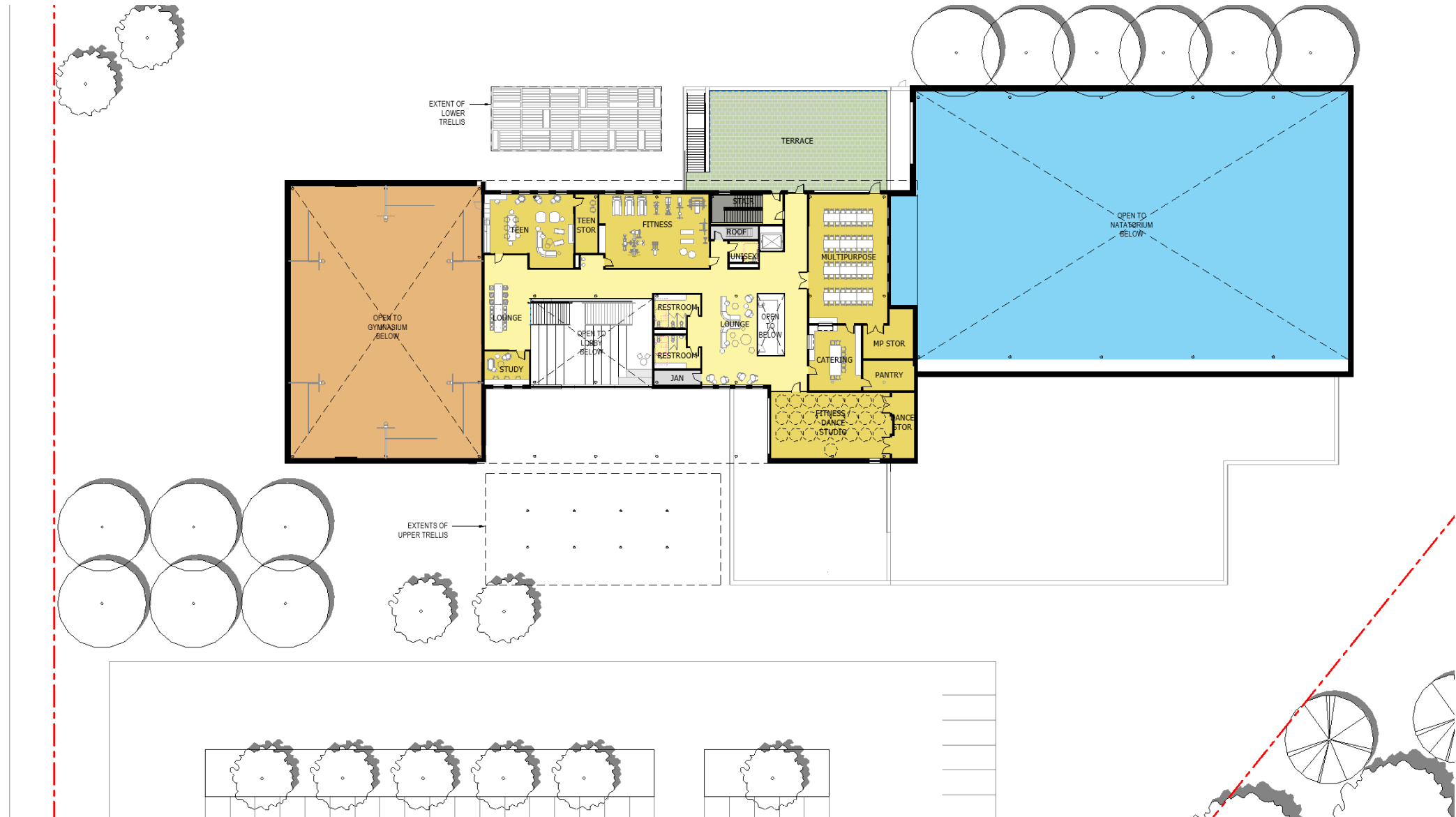
UPPER LEVEL: PHASE 1



MAIN LEVEL: PHASE 1 + PHASE 2

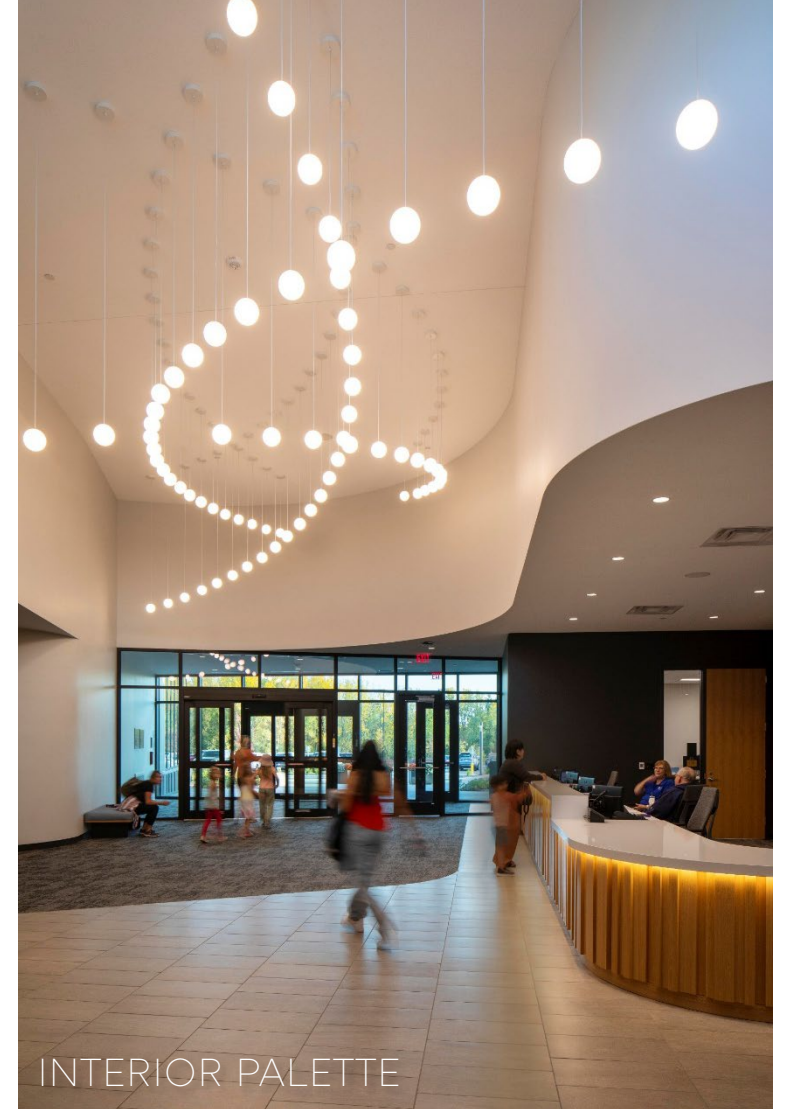
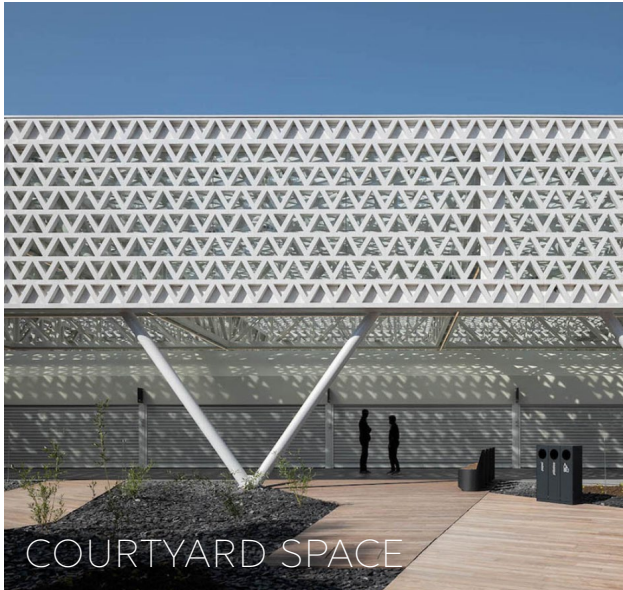


UPPER LEVEL: PHASE 1 + PHASE 2



CONCEPT DRIVERS

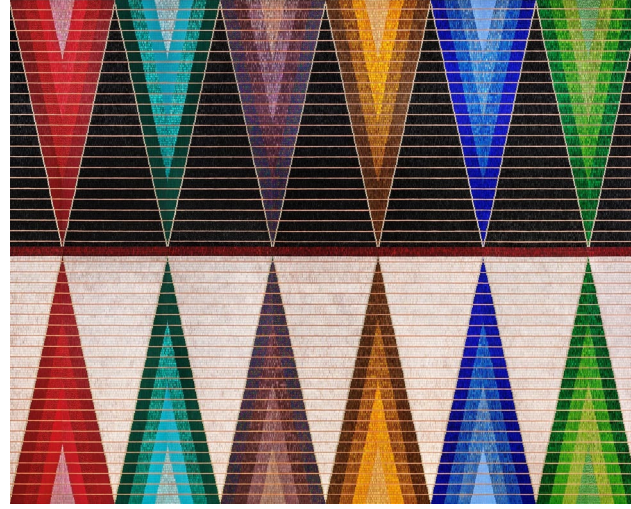
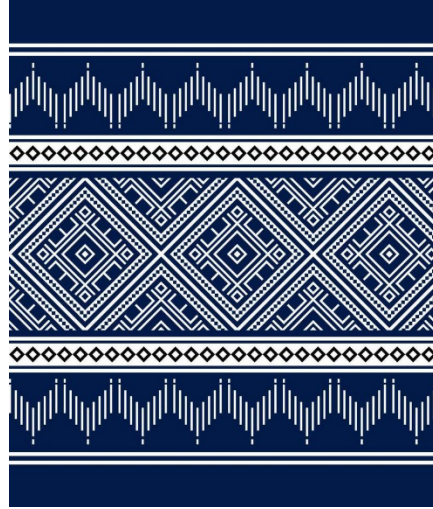
MATERIAL CONCEPTS + INSPIRATION



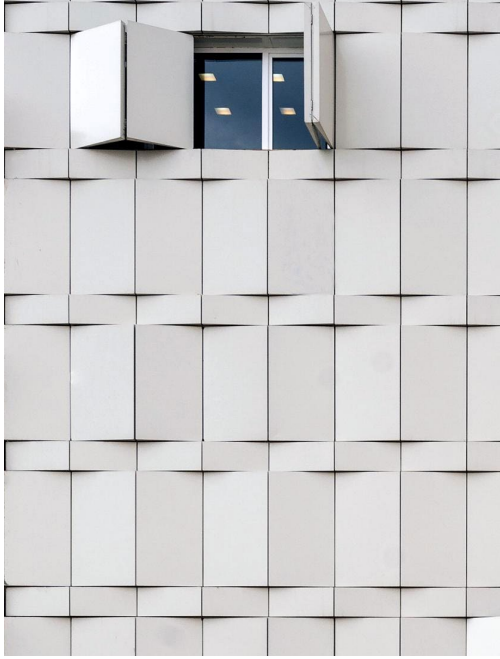
MATERIAL CONCEPTS + INSPIRATION



MATERIAL CONCEPTS + INSPIRATION



MATERIAL CONCEPTS + INSPIRATION



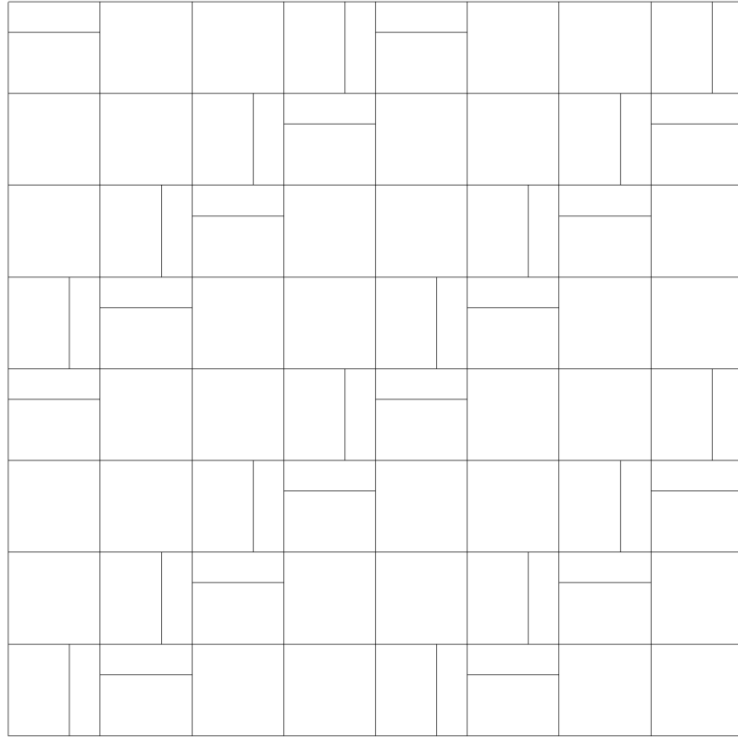
TRELLIS CONCEPTS + INSPIRATION



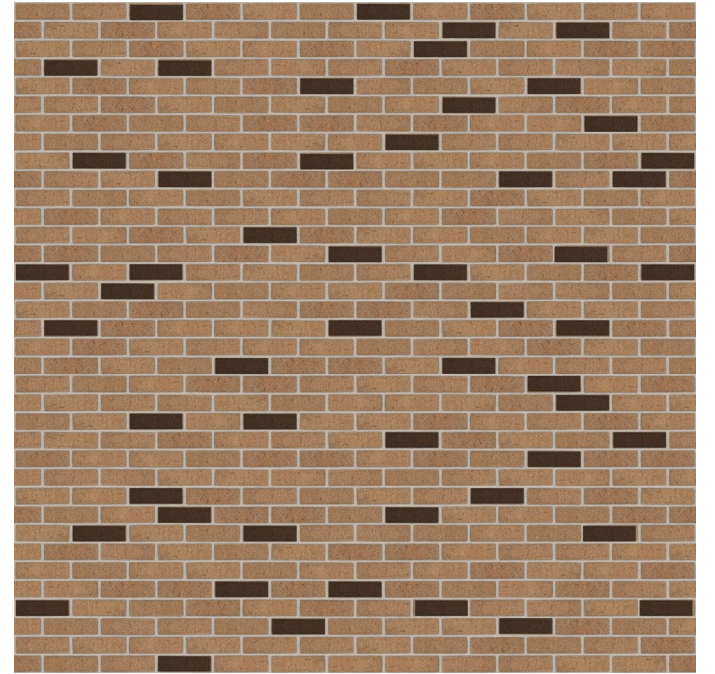
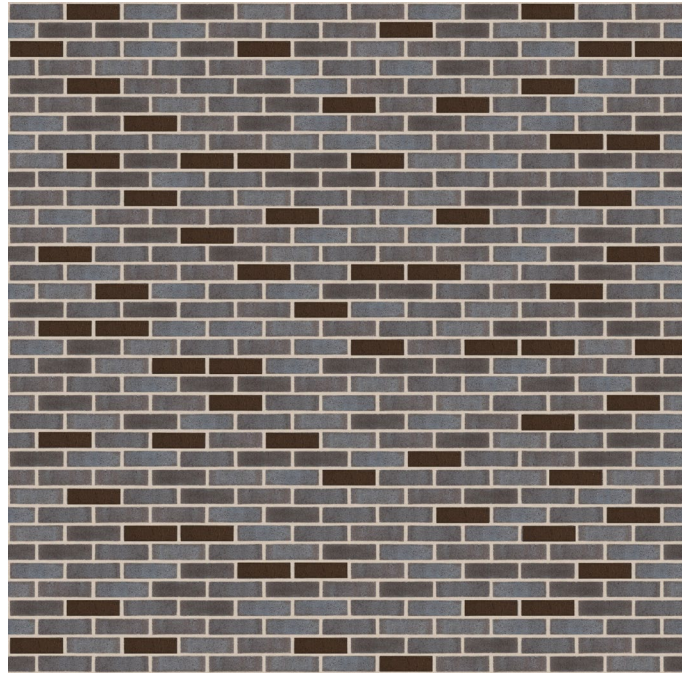
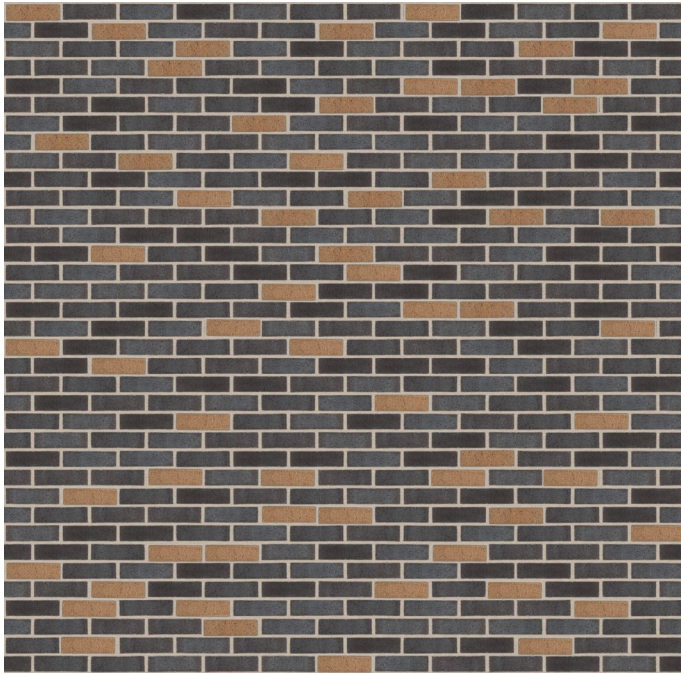
EXTERIOR DEVELOPMENT

MATERIALS

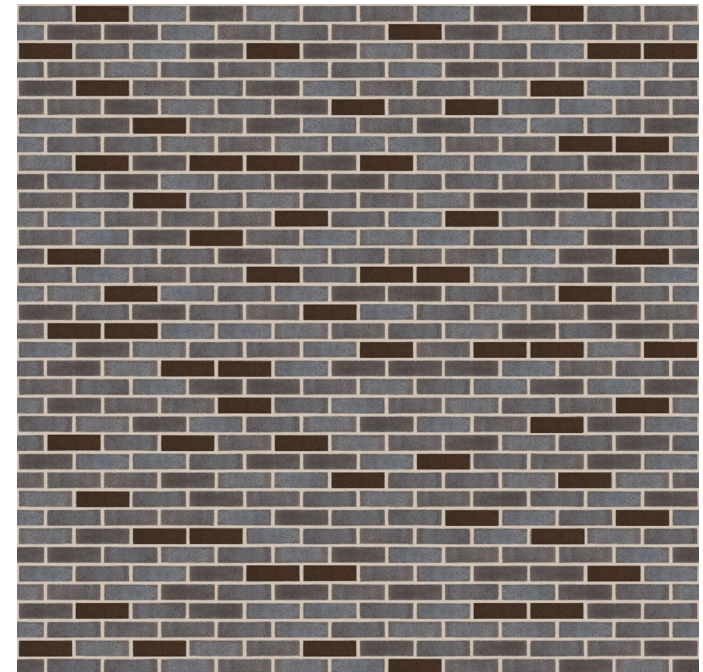
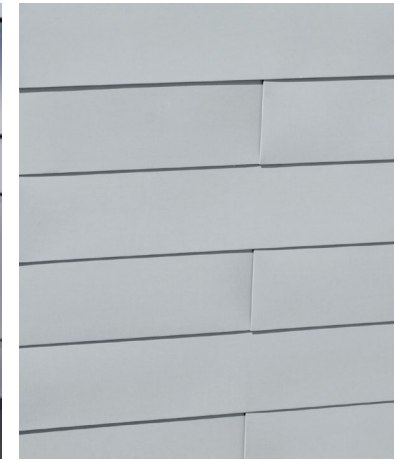
METAL PANEL PATTERNING



BRICK BLENDS



BRICK BLENDS + METAL PANEL



METAL PANEL SEAM AND SHADOWS



OVERALL SOUTH VIEW



SOUTH TRELLIS VIEW



NORTHWEST VIEW



NORTHEAST VIEW



INTERIOR DEVELOPMENT

LOBBY VIEW EAST TOWARD RECEPTION DESK



LOBBY VIEW WEST TOWARD GYM



UPPER LEVEL LOUNGE/PREFUNCTION AREA



GYMNASIUM – LOOKING SOUTH



Q+A DISCUSSION

NEXT STEPS

PROJECT SCHEDULE

2024						2025					2026										2027												2028						
Dec	Jan	Feb	Mar	Apr	May	Jun	Jul	Aug	Sep	Oct	Nov	Dec	Jan	Feb	Mar	Apr	May	Jun	Jul	Aug	Sep	Oct	Nov	Dec	Jan	Feb	Mar	Apr	May	Jun	Jul								
Predesign					Schematic Design					Design Development					Construction Documents					Bid		Construction																	

CRITICAL MEETINGS | Schematic Design

- Duluth and Case Engagement – June 4th
- Workshop #1: June 26th – SD Kickoff
 - B3/SB2030 Meeting – 7/1
 - Engineering OPR Focus – 7/11
 - REC Program Focus – 7/15
- Workshop #2: July 24th – Preferred Scheme, exterior material discussion
 - Space requirement meeting – Gyms, Fitness, Multipurpose, Office, etc. – 8/28
- Workshop #3: August 28th – Preferred Scheme, building massing and materials discussion
- CAC Meeting September 18th
- Resilience Workshop September 23rd
- Workshop #4: September 25th – Updated plans and elevations, interior concept, cost update
- Workshop #5: October 23rd – 100% SD , updated cost, updated Operational Plan
- **CAC Meeting November 6th**
- SD Package Presentation: November 13th
- Open House at Hmong Village: November 21st

THANK YOU!