

# 2019 Annual Guide



## Saint Paul Recycling and Garbage Services

- Materials you can recycle
- Additional garbage services
- Correct cart placement
- Contact Information



Saint Paul Recycling & Solid Waste Services



Introduction.....	3
New Property Owners .....	4
Fees.....	5
Correct Cart Placement.....	6-7
Winter Collection.....	8-9
Recycling Guide.....	10-11
Recycling Services.....	12-13
Recycling at Events .....	14
Additional Recycling Resources.....	15
Garbage Services .....	16-19
Bulky Items.....	18
Yard Waste.....	20
Organics Recycling.....	21
Household Hazardous Waste.....	22
Contact Information .....	23

The City of Saint Paul contracts with haulers to provide recycling and garbage services to Saint Paul residential households.



## Recycling

Eureka Recycling collects recyclable materials from all residential properties in Saint Paul. Recycling is collected every week for single family through 11-unit buildings. Large apartment buildings are also serviced by Eureka with varying collection schedules.



## Garbage

Saint Paul's Citywide Garbage Service provides a designated garbage hauler for each street or alley. St. Paul Haulers, LLC, a group of licensed haulers, collects garbage for all of the city's residential properties with 1-4 units. Garbage service is required, and prices and service are consistent throughout Saint Paul. Residents can choose their cart size and service level to meet their household garbage needs.

## Questions About Your Collection?

### Recycling

Call Eureka Recycling  
651-222-7678

Visit [stpaul.gov/recycle](http://stpaul.gov/recycle)

Use Eureka's app for collection updates. Search "Eureka Recycling" in your app store, or use this tool online at [eurekarecycling.org](http://eurekarecycling.org)

### Garbage

Call your designated hauler  
(see page 19)

Visit [stpaul.gov/garbage](http://stpaul.gov/garbage)

Find your garbage hauler's contact information and collection day at [stpaul.gov/garbagemap](http://stpaul.gov/garbagemap) or call 651-266-6101





As a property owner in Saint Paul, there are a few steps to get your garbage and recycling services set up as soon as you are in your residence. Much like your other basic utilities, there should be no gaps in service.

## Recycling Service

Recycling carts remain at the property. If a recycling cart is not on the property when you move in, please contact Eureka Recycling at 651-222-7678 to have one delivered. You do not need to call or contact Eureka to start or cancel collection service. The recycling truck will be in your neighborhood each week.

## Garbage Service

If you are changing ownership of your 1-4 unit property, please follow these steps to transfer the quarterly garbage bill to the correct owner. Your hauler will need to verify the change.

### If you are purchasing:

1. Immediately contact your designated hauler to set up the garbage service in your name. Enter your property address at [stpaul.gov/garbagemap](http://stpaul.gov/garbagemap) to find your hauler and collection day, or call 651-266-6101.
2. City garbage cart(s) remain on the property. Each unit must have its own cart.
3. If a city garbage cart(s) is not at your property, please call your designated hauler to request a cart(s) be delivered.
4. You can change your garbage cart size once a year at no additional cost.

### If you are selling:

1. Pay all quarterly garbage bills in full. You will be refunded the portion of the bill for service delivered after the new buyer takes ownership.
2. Call your designated hauler to let them know you have sold the property, along with the closing date.
3. Leave all garbage and recycling carts in a safe, secure location on the property for the new owner(s).

» As either the buying or selling property owner, you are responsible to pay your share of the quarterly garbage bill for the time in which you own(ed) the residence.

## Recycling

An annual recycling fee is collected through the Ramsey County Property tax system. This fee supports residential and public space recycling collection, a recycling drop off center, program administration, education, outreach, and more. The fee for 1-3 unit properties is \$58.20 per unit (\$4.85 per month). The fee for 4 units and above is \$36.16 per unit (\$3.01 per month).

## Garbage

An annual solid waste fee is collected through the Ramsey County property tax system. All residential properties with 1-4 units support the garbage service system. The annual fee is \$24.60 per unit (\$2.05 per month). This fee helps cover costs for garbage carts, program administration, and education and outreach efforts.



## Basic garbage service levels and prices:

Your quarterly bill is sent from and paid directly to your hauler, not the city.

Cart Size:	Collection:	# Bulky Items Included (per year)	Quarterly Rates:
Small	Every other week	2	\$60.83/quarter
Small	Every week	2	\$70.34/quarter
Medium	Every week	3	\$96.08/quarter
Large	Every week	3	\$102.44/quarter

Quarterly pricing includes all fees and county and state taxes.

# Correct Cart Placement



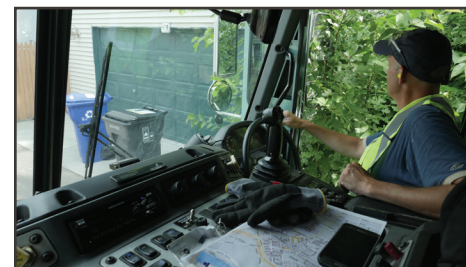
- Place your carts at the **edge of the alley or curb** with the opening facing outwards by 6:00 a.m. on your collection day.
- All **materials must fit inside** your cart with the lid closed.
- Leave **two feet of space** between your carts and other objects, such as trees, fences, garages, or snow piles.
- If you have an alley, make sure **house numbers are posted** on your garage.

## Garbage

- All household garbage must be bagged (paper, plastic or biodegradable) inside the cart with the lid closed.
- Extra bags may be placed on top of or next to the garbage cart on collection day, and will be collected for an additional \$3 (plus tax).
- Bulky items (see page 18) must be placed next to the garbage cart at your collection location. Call your hauler to schedule a collection.
- Per city ordinance, residents with curbside collections must move their carts away from the curb by the end of the collection day.



## Find Your Collection Day



Most neighborhoods receive garbage and recycling collection service on the same day.

To find your hauler and collection day, enter your property address at [stpaul.gov/garbagemap](http://stpaul.gov/garbagemap), or call 651-266-6101.

## Holiday Collection

Your garbage and recycling collection will be delayed one day if it falls on or after the following observed holidays:

- Memorial Day
- 4th of July
- Labor Day
- Thanksgiving
- Christmas Day
- New Year's Day

## Education Tags



If your hauler is unable to collect your garbage and/or recycling cart, they may leave you an education tag.

If you find a tag on your cart, please read it and correct the issue for your next collection day.

## Where does my garbage and recycling go?

None of your garbage ends up in a landfill. Garbage collected in the City of Saint Paul goes to the Ramsey/Washington Recycling & Energy Center (R&E Center). The R&E Center processes more than 440,000 tons of garbage a year and produces fuel used by Xcel Energy to generate electricity.

Recyclables are processed at Eureka Recycling's Material Recovery Facility, sorted, then shipped to end markets in the Twin Cities metro area and midwest to be made into new materials.





# Winter Collection

## Avoid collection delays by placing your carts correctly in the winter.

Shovel a safe and accessible pathway to your carts from your street or alley.



Do not place your carts on top of or behind a snow bank, or in water, where they could freeze to the ground.



Do not put your carts in the street. This can interfere with snow plowing.



Make sure your cart lids are closed and clear of snow and ice.



The City of Saint Paul does not plow alleys. Please work with your neighbors to keep your alley plowed and accessible during winter months.

## Holiday Tree Collection

You can have one live holiday tree collected, at no additional cost, between January 2-15 each year. This is a separate service from bulky item collection and does not count as a bulky item. Holiday trees must be no larger than 6 feet in length and 20 pounds in weight.

- Place your tree next to your garbage cart on your collection day between January 2-15.
- All trees must have all decorations and stands removed.
- No artificial trees.
- Limit one holiday tree per household (or one tree per unit for multi-unit properties).
- Additional holiday trees, artificial trees, or trees larger than 6 feet in length can be collected as a bulky item (see page 18).



## Weather Delays

Bad winter weather, such as icy or heavy snow conditions may present problems or cause isolated delays for collection. The recycling and garbage haulers use different trucks and equipment. There may be times that your street or alley may be accessible for one type of truck but not another.



Learn more about winter collection and find updates at [stpaul.gov/wintercollection](http://stpaul.gov/wintercollection)

Recycling collection updates are also available by email, text message, or phone call through the Eureka Recycling app. Download their mobile app by searching "Eureka Recycling" in your app store, or use this tool online at [eurekarecycling.org](http://eurekarecycling.org).





# Recycling Guide

Place recyclable items loosely in your cart.



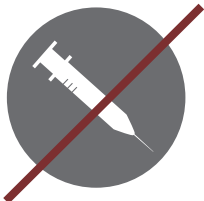
Do not place these items in your recycling cart:



No Plastic Bags



No Food or Liquids



No Sharp Objects  
or Needles



No Fuel or Propane  
Tanks



No Hazardous Waste



No Electronics  
or Batteries

Do not put recycling in plastic bags!

## Plastics

#1, #2, #4, #5, & #7  
Empty and rinse.  
Keep caps on.



### Bottles and jugs:

- Water, soda, and juice bottles
- Milk and juice jugs
- Shampoo, soap, and lotion bottles

### Cups and Containers

- Yogurt, pudding, and fruit cups
- Margarine, cottage cheese, other tubs, and lids
- Plastic produce and takeout containers

**NO:** #3 and #6 plastics, plastic bags, black plastic, Styrofoam™, or containers larger than 3 gallons

## Metal

Empty and rinse.



- Food and beverage cans
- Aluminum foil and trays
- Decorative tins and pie tins

**NO:** Paint cans, propane cylinders, or helium tanks

## Glass

Remove caps.  
Empty and rinse.



- Food and beverage bottles and jars

**NO:** Drinking glasses, window glass, ceramics, or mirrors

## Paper

- Mail, office, and school papers
- Newspapers (with inserts)
- Magazines, mail, and phone books
- Shredded paper (close in a paper bag and label)



**NO:** Paper egg cartons, paper plates, napkins, paper towels, or coffee cups

## Boxes

Empty and flatten.



- Cardboard
- Cereal, cracker, shoe, and gift boxes
- Delivery pizza boxes
- Refrigerated food boxes
- Toiletry boxes

**NO:** Frozen food boxes

## Cartons and Cardboard Cans

Remove caps.  
Empty and rinse.

- Milk cartons
- Juice boxes
- Soup, broth, and wine cartons
- Chips, nuts, and other snack cans



**NO:** Paper or Styrofoam™ egg cartons or ice cream cartons.



## Clothes and Linens



Clothes and linens (gently used or torn/tattered) must be clean and dry. Place in a very sturdy plastic bag and fasten tightly.



Clearly label the bag "Clothes & Linens" and place next to your cart on your collection day.

## Cardboard Recycling Reminder

All cardboard must be broken down, flattened, and small enough to fit loosely in your cart.

If you frequently produce a large amount of cardboard, request a larger cart by calling Eureka Recycling at 651-222-7678, or bring it to the free Recycling Drop-Off Center.



## Free Recycling Drop-Off Center



Saint Paul residents and small businesses can bring the same list of acceptable items to the free recycling drop-off center.

**309 Como Avenue S, Saint Paul**  
Monday-Friday: 8 a.m. - 4:30 p.m.  
Saturday: 8 a.m. - noon

## Citywide Drop-Off Events



Saint Paul partners with local district councils to organize annual community drop-off events for residents to properly dispose of large items, recycle materials not collected in the curbside program, and to share usable goods with others.

Look for a brochure mailed to all households in the spring with upcoming drop-off event dates, locations, and details. Please consider being an event volunteer!

Find more information at [stpaul.gov/recycle](http://stpaul.gov/recycle)

## Come Clean! Program

To reduce litter in our community, Saint Paul encourages community members to help clean, beautify, and improve their neighborhoods. There are multiple ways to get involved:



- **Organize a one-time litter clean up event**  
Organize a group to clean up an area of Saint Paul. The *Come Clean!* Program provides gloves and plastic bags to collect trash and recycling.
- **Adopt a public trash container**  
Adopt a trash receptacle to help combat litter in your neighborhood. The city will provide the trash containers at approved locations.
- **Clean up a specific block(s) in your neighborhood**  
Block clubs, community groups and organizations can adopt-a-block and clean up a portion of their neighborhood.
- **Spring Citywide Clean up Event**  
Each spring, hundreds of volunteers gather across Saint Paul to pick up garbage that has recently become exposed due to the melting snow.

Learn more about these programs at [stpaul.gov/come-clean](http://stpaul.gov/come-clean)



Saint Paul is committed to protecting the environment and public health, reducing greenhouse gas emissions, and conserving energy and natural resources. Community events, parades, races, and public gatherings play a vital role in accomplishing these goals.



## Reserve Containers for your Event

Reserve free recycling and organics recycling containers, signs, and bags to help reduce waste. Please request containers at least two weeks in advance. Supplies are limited and are distributed on a first-come, first-served basis.



## Waste Management Plans

Event organizers applying for permits are required to submit a Waste Management Plan. These plans are intended to aid event organizers in reducing the waste generated at public events.

## Plan Ahead and Reduce Waste!

Reserve containers and find links to required forms, signs, and resource guides at [stpaul.gov/eventrecycling](http://stpaul.gov/eventrecycling)



## Apartment Buildings

The City of Saint Paul and Ramsey County have free assistance and resources available to help tenants recycle.

[stpaul.gov/apartmentrecycling](http://stpaul.gov/apartmentrecycling)



## Businesses

Businesses of all sizes in Ramsey County can receive free help to recycle. BizRecycling provides grant funding and free on-site consultations with recycling experts.

[bizrecycling.com](http://bizrecycling.com)



## Fix It Clinics

Bring in small household appliances, clothing, electronics, mobile devices, and more to receive free guided assistance from volunteers with repair skills to disassemble, troubleshoot, and fix items.

[ramseyrecycles.com/fixitclinics](http://ramseyrecycles.com/fixitclinics)



## A-Z Disposal Guide

Find more recycling and disposal options.

[ramseyrecycles.com/AtoZ](http://ramseyrecycles.com/AtoZ)

651-633-EASY (3279), answered 24/7



# Garbage Services

Saint Paul's citywide garbage service, where each street/alley has one designated residential garbage hauler, began on October 1, 2018. Prices and services are consistent across Saint Paul. St. Paul Haulers, an LLC of licensed garbage haulers, collects garbage from all 1-4 unit residential properties.

## Garbage Carts



All household garbage should be securely bagged. Do not place loose garbage inside your garbage cart. Garbage can be secured in any type of bag, such as plastic, paper (stapled or rolled tightly shut), or biodegradable bags.

Any garbage that does not fit in a cart with the lid closed is considered "overflow," and will be collected for \$3 per bag (plus tax). Bag all overflow garbage and keep it indoors until your collection day.

You are responsible if your cart is lost or damaged beyond normal wear and tear. Please keep your cart clean and store it in a safe location. Do not paint or alter the exterior of your cart.



***Do not put needles, hazardous waste, yard waste, or electronic waste inside your garbage cart.***

## Billing

Billing services are provided by your hauler. If you have any questions about your bill, or you believe there may be an error on your billing statement, please contact your garbage hauler directly.

## Every Other Week Collection

If you have a small, 35-gallon cart with a purple lid, your garbage is collected every other week.

You can find the 2019 Every Other Week Collection Schedule at [stpaul.gov/garbage](http://stpaul.gov/garbage).



## Changing Your Cart Size

Property owners can change their cart once per year for no fee. Additional cart changes will cost \$25 per change. Cart changes can include, but are not limited to, service level changes or cart replacements due to damage or loss. Please contact your hauler to request a cart change.

Property owners can also contact their hauler to request additional garbage carts if they require more capacity.

The pricing for additional carts can be found at [stpaul.gov/garbage](http://stpaul.gov/garbage).



## Missed Garbage

If your garbage cart was placed at your collection location by 6 a.m. on your collection day and your garbage was not collected, please call your hauler immediately to report a missed collection.

If you did not place your garbage cart out by 6 a.m. on your collection day, your hauler can return and collect your garbage for a \$40 fee (plus tax). If you would like to request "return service," call your hauler as soon as possible.



## Illegal Dumping

Please report illegal dumping in an alley or a public right of way to the Department of Safety and Inspections at 651-266-8989.

If someone has illegally dumped on your property, you are responsible for properly disposing of the debris.



“Bulky” items are items that are too large to fit or are not allowed inside your garbage or recycling cart, such as furniture, mattresses, appliances, and electronics. Property owners can schedule bulky item collection. Tenants should contact their landlord if they need to dispose of a bulky item.

Depending on your cart size, you can have two bulky items (small cart) or three bulky items (medium or large cart) collected each calendar year at no additional cost. If you need to get rid of more items, you can pay \$10-\$35 per bulky item (plus tax).

Visit [stpaul.gov/bulky](http://stpaul.gov/bulky) for more information and pricing.

## Bulky Item Collection Process

Contact your garbage hauler at least 48 hours before your regular garbage collection day. Your hauler will not pick up bulky items if they have not been scheduled.

Your hauler will tell you which day to put your bulky item out for collection. It may or may not be on your regular collection day, but it will be collected within seven days.

- Do not place bulky items inside your garbage cart.
- Place bulky items beside your cart at your regular collection location.
- Bulky items must be free of all food and liquids.
- Your garbage hauler will track the number of bulky items collected from your property.
- Property owners can contact their hauler at any time to find out the number of free bulky items remaining on their account for the year.
- Saint Paul Haulers do not accept construction and demolition material. Please visit [ramseyrecycles.com/AtoZ](http://ramseyrecycles.com/AtoZ) to find other drop-off options for construction and demolition material.

## Service Holds



Service holds can be used for temporary absences, such as extended vacations. Service holds may not be used to avoid paying for service if a residence is occupied.

To suspend garbage service, you must notify your hauler at least two weeks prior to any service hold start date. Service holds can be placed twice per year, must be made for a minimum of four weeks, and can be up to a total of 26 weeks. You will be credited for the number of weeks service was suspended on the next invoice after service is restarted.

You can find the Temporary Service Hold application form at [stpaul.gov/servicehold](http://stpaul.gov/servicehold). Mail the completed form to your hauler.

If your property will be unoccupied for a longer period of time, contact the city at 651-266-6101 to discuss your available options.

## Walk-Up Service

If you have special physical needs or limitations, all garbage haulers can provide free Walk-Up Service for garbage collection if needed.



If you do not meet the criteria as a less able-bodied individual, you can pay for walk-up service based on the distance your cart is located from your designated alley/curb collection location.

- **Less than 100 feet:** \$25 per month (plus tax)
- **More than 100 feet:** \$50 per month (plus tax)

All garbage must be bagged, placed inside of your cart, and weigh less than 40 pounds. Additional services, such as bulky or yard waste collection, are not available as a Walk-Up Service.

You can find the Walk-Up application form at [stpaul.gov/walkup](http://stpaul.gov/walkup). Mail the completed form to your hauler.



## Residential Yard Waste Collection

All garbage haulers offer seasonal yard waste service for an additional fee.

Seasonal yard waste service is available April 15-November 30 each year. You can choose from two options:



- **Subscription Service:** You can set out a yard waste cart and up to eight compostable bags to be collected each week (\$120 per year). Contact your hauler to set up service.
- **Non-Subscription Service:** You can set out a compostable bag or bundle of yard waste beside your garbage cart (\$3 per bag/bundle). Call your hauler to request this service at least 48 hours before your regular garbage collection day. Your hauler will tell you which day to put your compostable bag(s) or bundle(s) out for collection.

All yard waste set out for collection must be placed in a yard waste cart or a certified compostable bag. Yard waste bags or bundles cannot exceed 40 pounds or two feet in diameter and three feet in length. Tree stumps, dirt, or rocks are not allowed in yard waste collection.

## Yard Waste Drop Off Sites

Yard waste is accepted for free at Ramsey County yard waste sites (see next page for Saint Paul locations). Sites are free and open to Ramsey County residents. A photo ID is required.

Household organics are also collected at these locations!



Organics recycling is the collection of organic material for composting. Saint Paul residents can collect organics in their home and take it to a drop-off site listed below.

## Accepted Items

Food Scraps	Soiled Paper	Other
<ul style="list-style-type: none"> <li>Fruits &amp; Vegetables</li> <li>Meat &amp; Seafood</li> <li>Dairy Products</li> <li>Eggshells</li> <li>Baked Goods</li> </ul>	<ul style="list-style-type: none"> <li>Napkins &amp; Tissues</li> <li>Paper Towels</li> <li>Paper Egg Cartons</li> <li>Paper Plates &amp; Cups (uncoated/unlined)</li> </ul>	<ul style="list-style-type: none"> <li>Coffee Grounds</li> <li>Paper Coffee Filters</li> <li>Paper Tea Bags</li> <li>Wooden Popsicle Sticks &amp; Toothpicks</li> </ul>

Visit [ramseyrecycles.com/organicsrecycling](https://ramseyrecycles.com/organicsrecycling) for a full list.

## Drop Off Sites in Saint Paul:

		Leaves & Grass	Trees & Shrubs	Organics Recycling
Community Drop Off Sites	<b>Mac-Groveland Organics Site</b> Off Grand Ave. near Macalester St. <i>*Sign up required. Visit <a href="https://macgrove.org">macgrove.org</a></i>			
	<b>Como Park Organics Site</b> 1149 Beulah Ln.			
Ramsey County Yard Waste Sites <a href="https://ramseyrecycles.com">ramseyrecycles.com</a>	<b>Summit Hill</b> 870 Pleasant Ave			
	<b>Battle Creek</b> 389 S Winthrop St			
	<b>Midway</b> 1943 Pierce Butler Rt.			
	<b>Frank and Sims</b> 1150 Sims Ave			

# Household Hazardous Waste

If a container has the words caution, warning, danger or poison on the label and still has product inside, it does not belong in the trash. Use Ramsey County's free household hazardous waste collection sites for safe disposal.

## Ramsey County Year-Round Collection Site\*

### Bay West, Inc. - 5 Empire Dr, Saint Paul

#### April - November Hours

**Tuesday - Friday:** 11 a.m. - 6 p.m.  
**Saturday:** 9 a.m. - 4 p.m.  
**Sunday - Monday:** Closed

#### December - March Hours

**Friday:** 9 a.m. - 4 p.m.  
**Saturday:** 9 a.m. - 4 p.m.  
**Sunday - Thursday:** Closed

\*Open to residents of Ramsey, Anoka, Carver, Dakota, Hennepin, and Washington counties. Photo ID required. For mobile collection sites from April-October, visit [ramseyrecycles.com](http://ramseyrecycles.com)

## Accepted Items

### Automotive Products

- Antifreeze
- Automotive fluids
- Gasoline
- Lead-acid batteries
- Oil Filters
- Used Oil



### Lawn and Garden Products

- Bug Killers/Repellents
- Herbicides
- Pesticides
- Pool Chemicals
- Weed Killer



### Household Products

- Adhesives
- Aerosols
- Cleaners
- Fire extinguishers
- Fluorescent bulbs
- Mercury-containing items
- Paint
- Rechargeable batteries
- Stains and varnishes



### Personal Care Products

- Nail polish
- Hair spray
- Needles/Syringes
- Perfume and cologne



### Recreational Products

- Cell Phones
- Propane Tanks
- String Lights



# Contact Information

## Recycling

Call Eureka Recycling with service related questions or requests.

651-222-7678

[info@eurekarecycling.org](mailto:info@eurekarecycling.org)

[stpaul.gov/recycle](http://stpaul.gov/recycle)

### Download the Eureka Recycling App!

See your recycling schedule, get alerts, and look up what can and can't be recycled. Use this tool online at [eurekarecycling.org](http://eurekarecycling.org), or download the app on Android and iOS by searching for "Eureka Recycling" in your app store.

## Garbage

Call your hauler for service and billing issues. To find out who your hauler is, visit [stpaul.com/garbagemap](http://stpaul.com/garbagemap)

Advanced Disposal:	763-786-7233
Aspen Waste Systems:	612-884-8008
Gene's Disposal Service:	651-426-1224
Highland Sanitation:	651-458-0043
Ken Berquist & Son Disposal:	651-699-2442
Pete's Rubbish Hauling:	651-462-5907
Republic Services:	651-286-4590
Waste Management:	763-784-8349

For all other garbage program related questions, contact Saint Paul Public Works Garbage Information Line:

651-266-6101

[garbage@stpaul.gov](mailto:garbage@stpaul.gov)

[stpaul.gov/garbage](http://stpaul.gov/garbage)

## Ramsey County

651-633-EASY (3279), answered 24/7  
[ramseyrecycles.com](http://ramseyrecycles.com)



City of Saint Paul Public Works  
25 W 4th St - City Hall Annex 1500  
Saint Paul, MN 55102



*Printed on 100% post-consumer recycled content paper.*

**Questions?**

Information is available in 170 different languages.  
Call for interpreters.

**Recycling: 651-222-7678**  
**Garbage: 651-266-6101**

**¿Preguntas?**

Puede encontrar información disponible en Español en [stpaul.gov/all-in](http://stpaul.gov/all-in). Solicite el servicio de intérpretes.

**Recycling: 651-222-7678**  
**Garbage: 651-266-6101**

**Su'aalo?**

Macluumaadka waxaa lagu heli karaa luqadaha Soomali ayadoo internetka laga galayo [stpaul.gov/all-in](http://stpaul.gov/all-in). Turjubaanno telefoonka lagugu xariirayo. **Qashinka dlib loo isticmaalayo: 651-222-7678**

**Qashinka: 651-266-6101**

**Puas muaj Lus noog?**

Muaj ntaub ntawv sau ua Lus Hmoob ntawm [stpaul.gov/all-in](http://stpaul.gov/all-in). Hu kom tau neeg txhais lus.

**Kev Sau Khoom Ua Dua Sv: 651-222-7678**  
**Khib Nyhiab: 651-266-6101**